

Service

1. Water






Existing

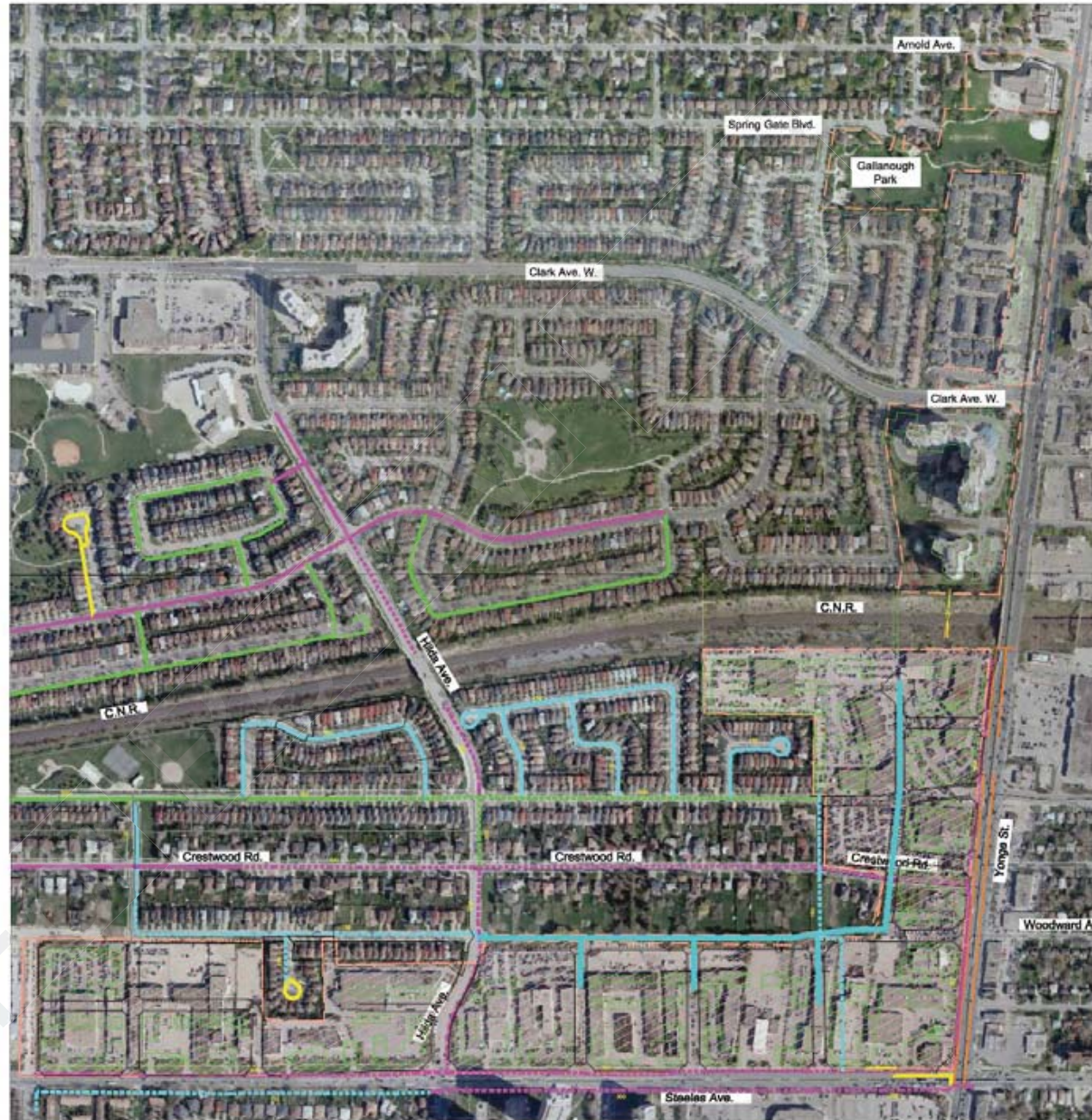
- South Part-Pressure District-5
- Ample water supply
- Good existing distribution system

Proposed

- New watermains on all future roads

LEGEND:

	PROPOSED WATERMAIN
	EXISTING 150mmØ WATERMAIN
	EXISTING 200mmØ WATERMAIN
	EXISTING 300mmØ WATERMAIN
	POTENTIAL RE-DEVELOPMENT PROPERTIES



Water – South

Yonge Street Study

Service

1. Water






Existing

- North Part-Pressure District-6
- Ample water supply
- Good existing distribution system

Proposed

- New watermains on all future roads

LEGEND:

-  PROPOSED WATERMAIN
-  EXISTING 150mmØ WATERMAIN
-  EXISTING 200mmØ WATERMAIN
-  EXISTING 300mmØ WATERMAIN
-  POTENTIAL RE-DEVELOPMENT PROPERTIES



Yonge Street Study

Service

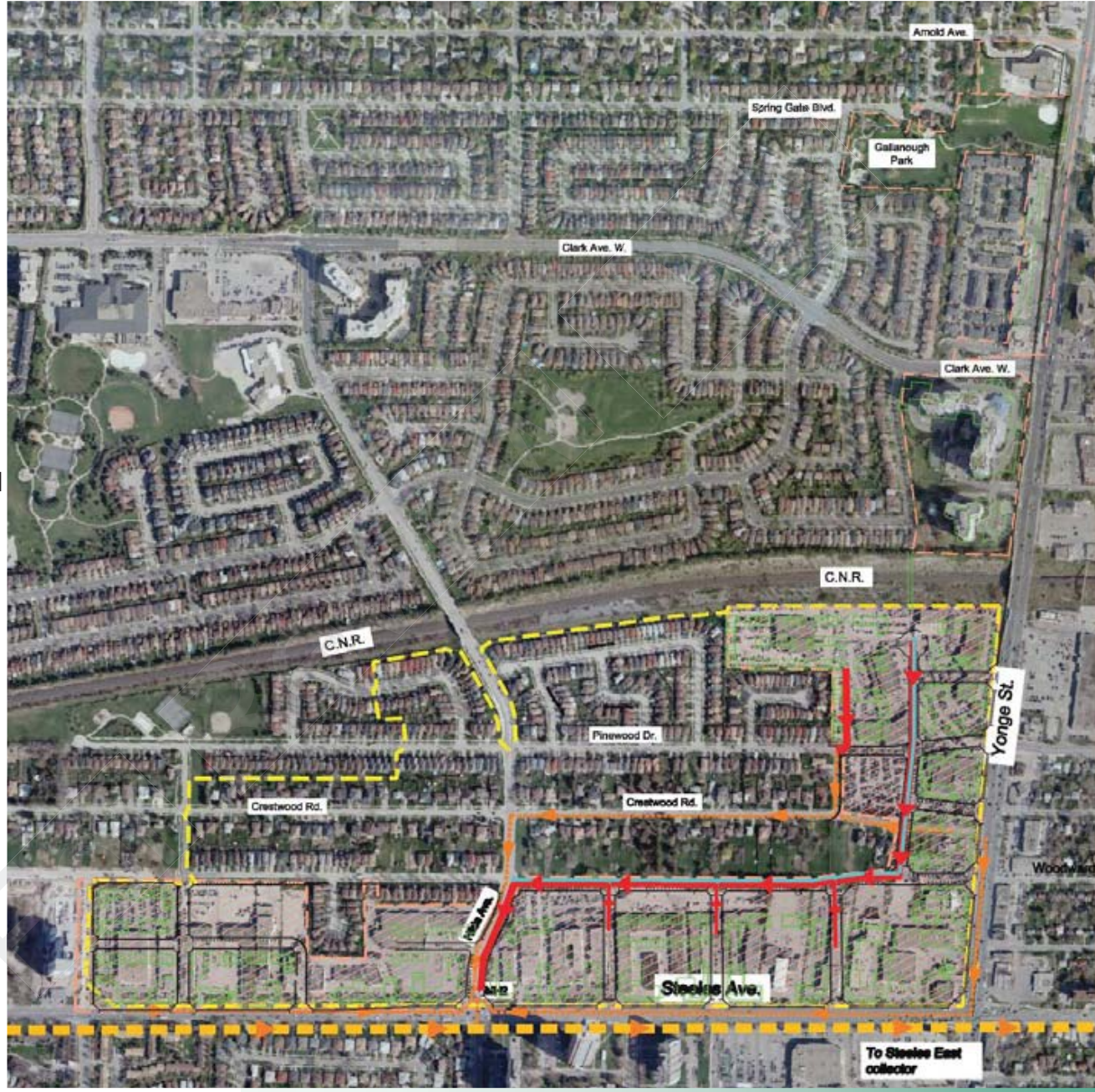
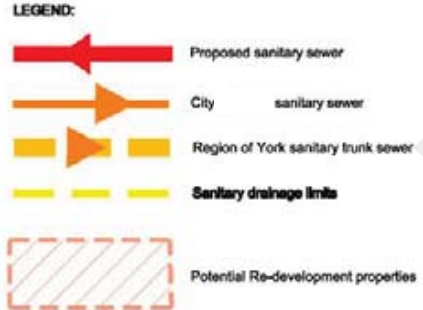
2. Sanitary

Existing

- Adequate York-Durham trunk capacity
- Inadequate local capacity

Proposed

- New parallel sewer or upgraded sewer needed on Hilda Avenue
- New collector sewer on future east-west road
- New local road sewers



Wastewater – South

Yonge Street Study

Service

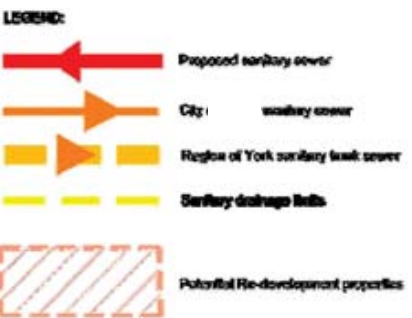
2. Sanitary

Existing

- Adequate York-Durham trunk capacity
- Adequate local capacity

Proposed

- New sewers on future local roads



Wastewater – North

Yonge Street Study

Service

4. Storm Water Management

STORM WATER MANAGEMENT

Existing

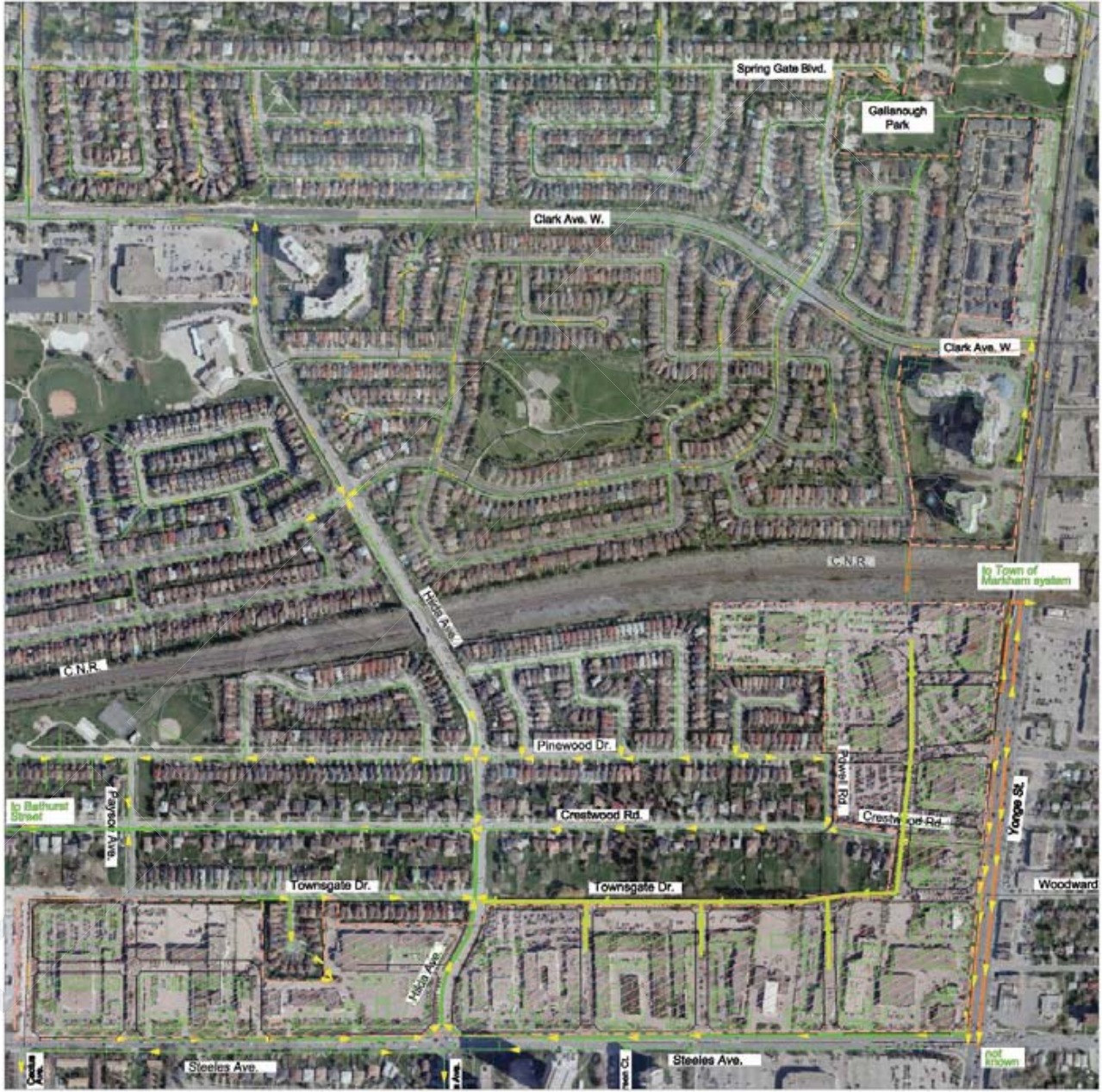
- No known problems
- High sewer capacity
- Little or no Storm Water Management (SWM)

Proposed

- SWM as per current Toronto and Region Conservation Authority requirements for all new development (on site)
 - Reduced run off volumes
 - Water quality improvements
- New sewers on Future Roads

LEGEND:

-  FUTURE STORM SEWERS
-  REGIONAL STORM SEWER
-  CITY STORM SEWER
-  POTENTIAL RE-DEVELOPMENT PROPERTIES



Storm Water Management – South

Yonge Street Study

Service

4. Storm Water Management

STORM WATER MANAGEMENT

Existing

- No known problems
- High sewer capacity
- Little or no Storm Water Management (SWM)

Proposed

- SWM as per current Toronto and Region Conservation Authority requirements for all new development (on site)
 - Reduced run off volumes
 - Water quality improvements
- New sewers on Future Roads

LEGEND:

-  FUTURE STORM SEWERS
-  REGIONAL STORM SEWER
-  CITY STORM SEWER
-  POTENTIAL RE-DEVELOPMENT PROPERTIES



Storm Water Management – North

Sustainability



- **Reduce demand related to energy, water, resources and waste treatment**
- **Support efficiency for energy water, resources and waste treatment**
- **Coordinate servicing capacity to respond to increased demand**



- **Sustainable Site**
 - Reducing the Carbon Footprint
 - Reduce the Load on Natural Systems
- **Storm Water Management**
 - Rainwater Collection and Absorption
 - Naturalized Stormwater Management
 - Green Roofs
- **Energy Efficiency**
 - Advancement
 - District Energy
 - Geothermal
 - Solar Use
 - High – Performance Building Envelope / Systems
- **Green Building Strategy**
 - LEED Goals
 - Materials
 - Recycling / Composting
 - Design for Adaptive Re-use



Yonge Street Study

Demonstration Perspectives

