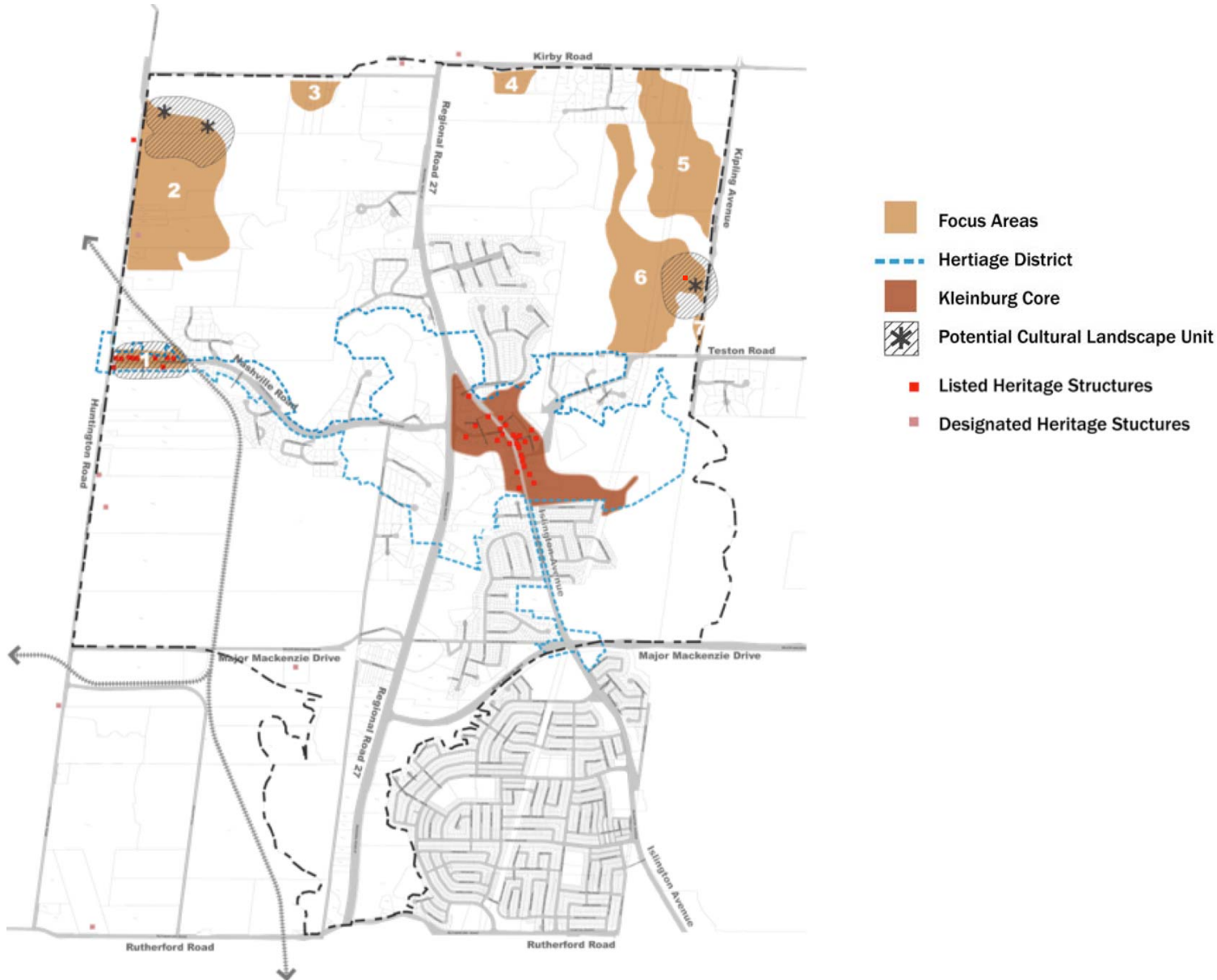


2 Background Review – Cultural Heritage



2 Background Review – Cultural Heritage

Nashville Core

- a linear village flanking the main road
- built around the train station and depot
- heritage character is defined by detached houses and commercial buildings, on large treed lots



Nashville main street, north side



Nashville main street, south side

2 Background Review – Cultural Heritage

- 11363 Huntington Road - a significant cultural landscape unit (stud farm complex of entrance gates, farmhouse, barns, paddocks, garage, and a summer house set in ornamental grounds, associated with the son of Sir Joseph Flavelle, millionaire industrialist and benefactor)
- the Humber Valley contains surviving structures and archaeological resources of former roads, mills and (potentially) aboriginal occupation



Huntington Road stud farm “summer house”



Humber River valley east of Huntington Road, with bowstring bridge

2 Background Review – Cultural Heritage

- historical information is limited for the surviving farm buildings east of Kleinburg
- two sites have potential heritage value, especially the cultural landscape unit of farmhouse and outbuildings, with mature tree windbreaks



11178 Kipling Avenue brick farmhouse, deteriorated



Kipling Avenue farm complex