



Edgeley Pond + Park

Public Meeting

February 21, 2017

Purpose of the meeting

This Public Meeting is an opportunity for you to review the project background, process and provide input.

City of Vaughan staff and members of the Project Team are available to answer any questions that you may have about the project and how it may impact you.

Following this Public Meeting, all comments and suggestions will be reviewed and used to inform the design.

Agenda

- Project Team
- Project Introduction
- Key Decision Points
- Draft Guiding Principles & Vision
- Help us design the park uses and landscapes through an interactive activity at the end of this presentation

In the Beginning...

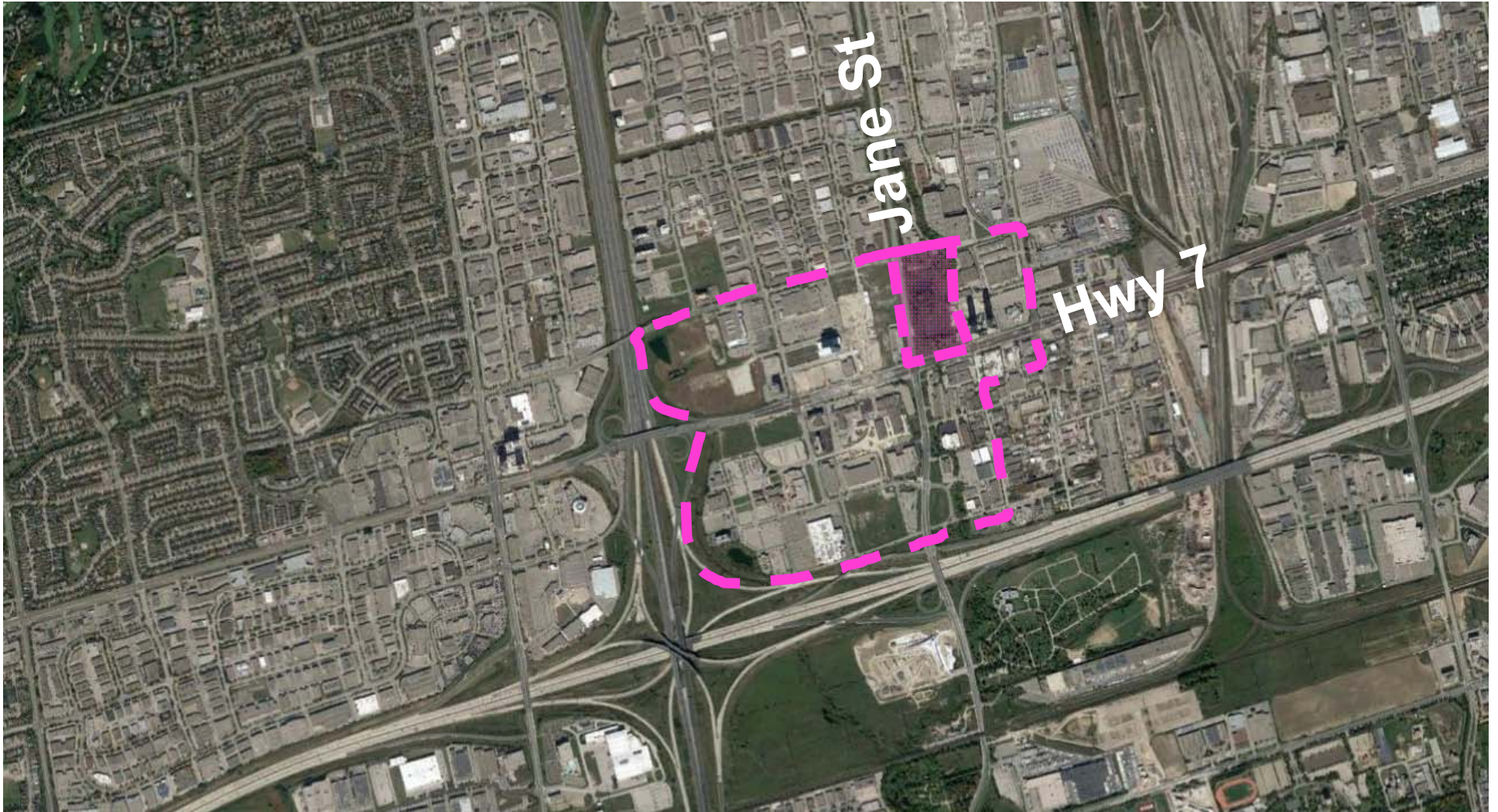
1955



The Village of Edgeley



VMC Context



Site Context



Project Introduction

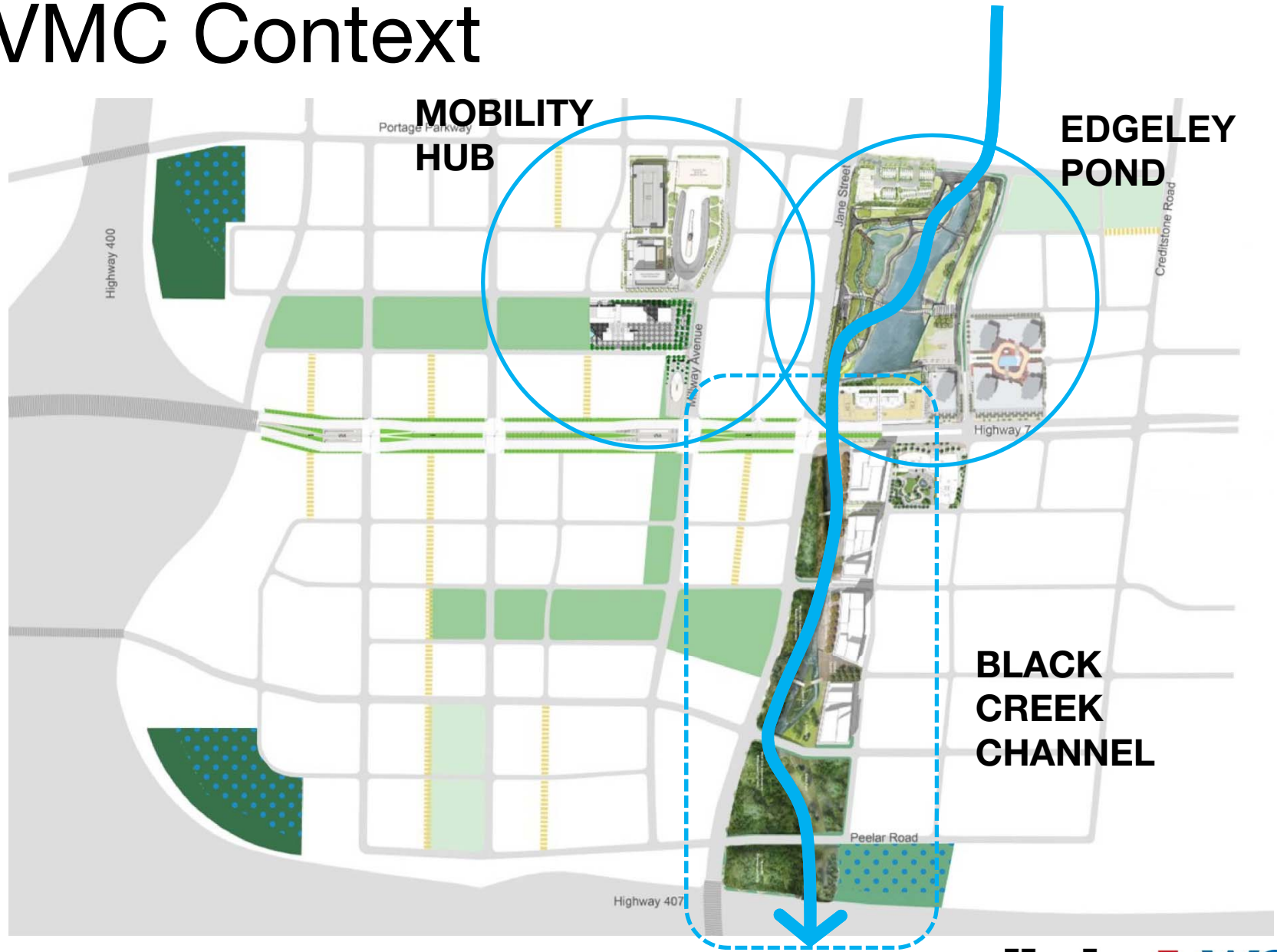
Stormwater
Management

+

Public Park
& Open Space



VMC Context



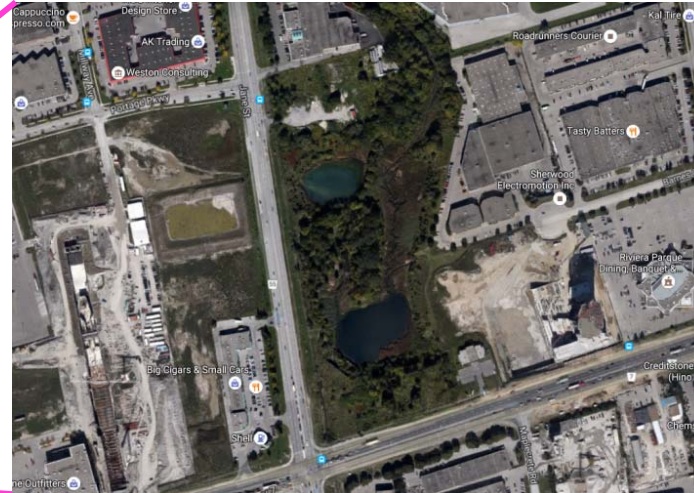
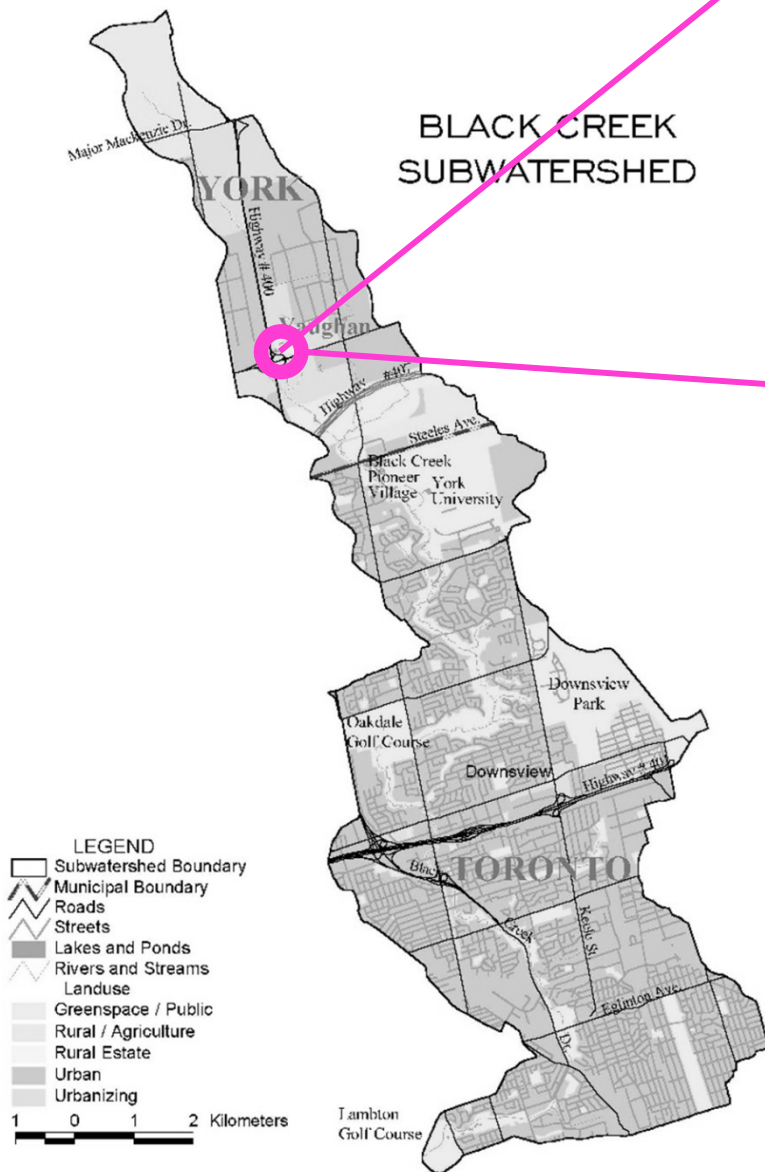
Fulfilling the Vision for the VMC

“The upgraded pond and new naturalized creek channel will be **integrated in design** to a **high urban design** and **sustainability standard** and as complementary landscapes.”

VMC Secondary Plan 5.6.7



Watershed



What we know about the watershed:

- High imperviousness ratio / flashy hydrographs
- Humber River Watershed Plan

What we know about upstream conditions:

- Upper watershed: 50% of baseflows generated upstream of Highway 7

What we know about downstream conditions:

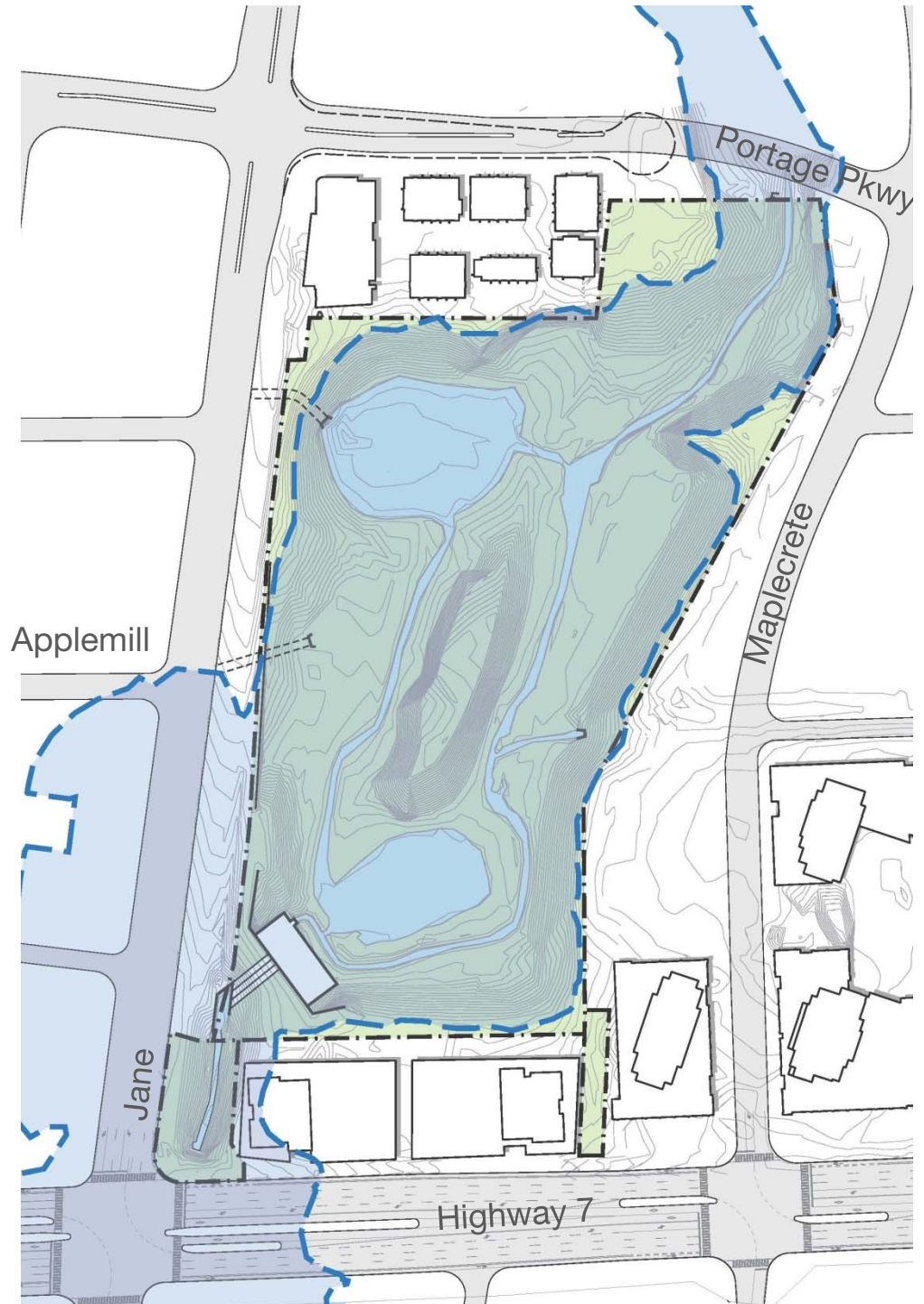
- Chronic flooding
- Aquatic and terrestrial habitat issues

Showcasing SWM Innovation:

- Update Hydrologic Model to provide reliable sustainability metrics

This is a dynamic space

Current limits of Regulatory Floodplane (Hurricane Hazel 1954)



Approved VMC Municipal Servicing EA Master Plan

Plan produced in 2012



Black Creek EA Process & Financial Strategy

- LEGEND**
- EX. BUILDING
 - PROPOSED BUILDING BY OTHERS
 - PROPERTY LINE
 - EX. CONTOUR
 - EX. FLOOD LINE
 - HYDRO LINE
 - HYDRO POLE
 - EX. ROAD
 - FUTURE ROAD
 - PROPOSED ROAD BY OTHERS
 - PROPOSED JANE STREET RIGHT OF WAY - 45m
 - PROPOSED JANE STREET RIGHT OF WAY - 49m
 - FUTURE PARK
 - LIMIT OF DEVELOPMENT
 - 'URBAN' BUFFER
 - BASE FLOW CHANNEL
 - BIOTECHNICAL STABILIZATION
 - NATURALIZED LANDSCAPE
 - NATURALIZED BUFFER
 - ALTERNATE STREETSCAPE
 - URBAN PLAZA
 - WATER LINE
 - SAN SEWER
 - STORM SEWER LINE
 - Proposed "Green" Street
 - Proposed "Blue" Street



TMIG and Schollen Plan

Plan produced in 2015



Black Creek / Jane Street

Looking North



North SWM Pond

Looking North



Large Weir Structure

Looking North East



South SWM Pond

Looking South East



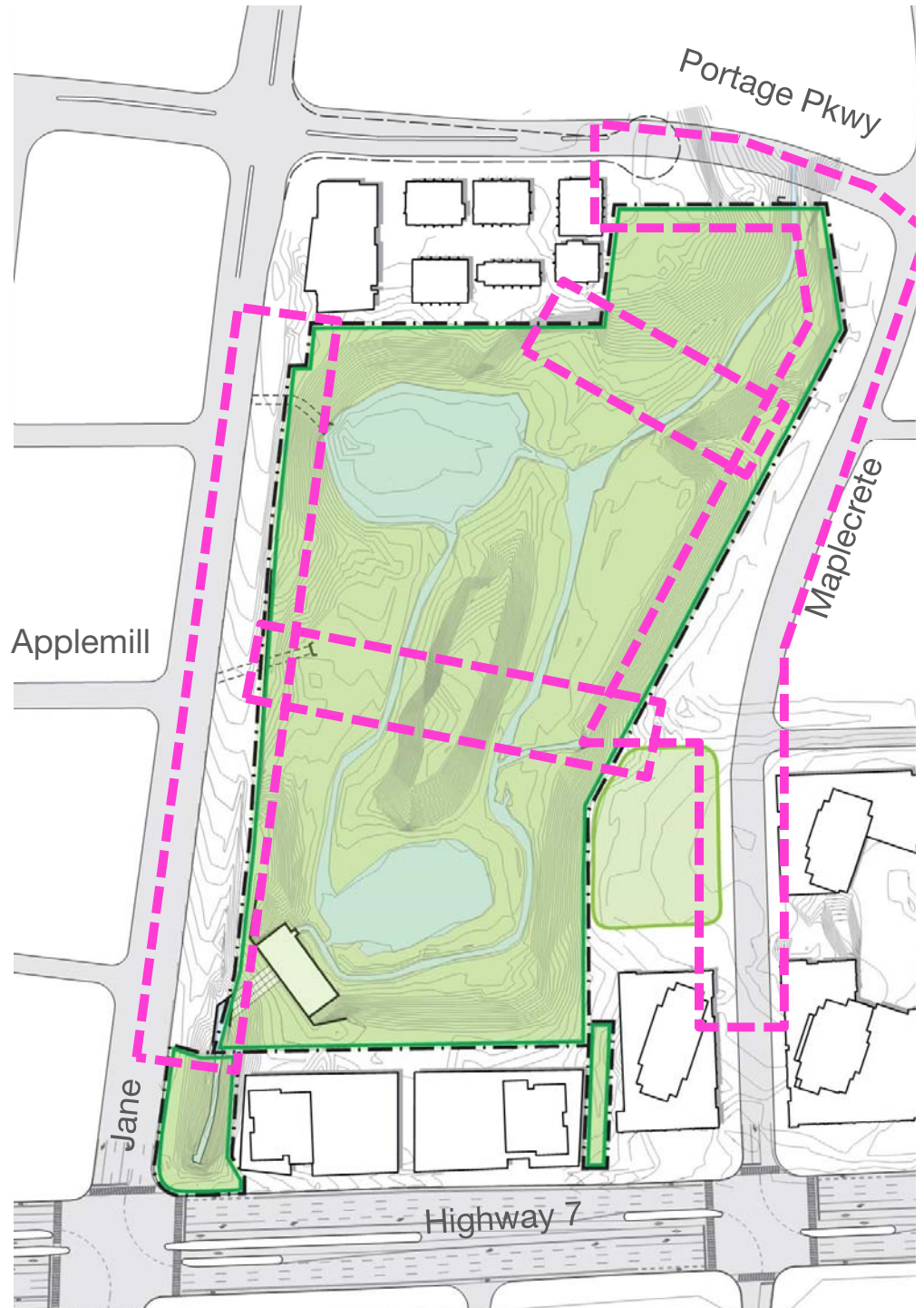
Schematic Design

- Stormwater facilities + functionality
- Enrich ecology + habitat
- Urban plaza
- Strata park
- Future pedestrian bridges
- Implementation of first pedestrian / cycle paths
- Integrated Art
- Future Maplecrete Road + Portage Parkway streetscape + park
- Jane Street streetscape



Detailed Design

- SWM facilities + functionality
- Enrich ecological + habitat
- Urban plaza
- Strata park
- Implementation of first pedestrian / cycle paths
- Integrated Art



Project Process

GOAL 2: Prepare Design Principles and Establish Vision – Shared Understanding

November 2016-February 2017

- Landowner Key Information Meeting (November 2016)
- Design Workshop 01 (January 2017)
- Stakeholder Meeting 01 (February 2017)
- Public Consultation 01 (February 2017)

GOAL 3: Develop Conceptual Design Options + Testing Ideas

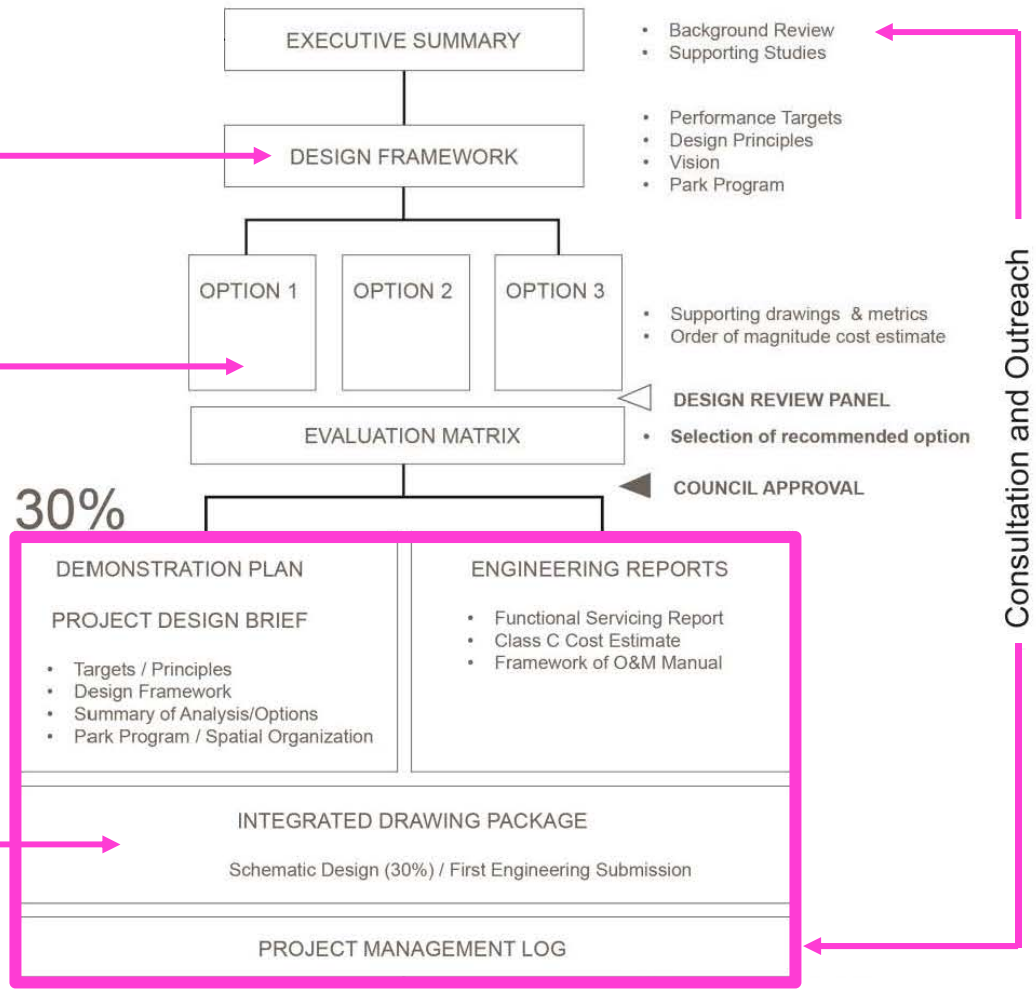
February – May 2017

- Design Workshop 02 (March 2017)
- Design Workshop 03 (April 2017)
- Stakeholder Meeting 02 (April 2017)
- Public Consultation 02 (May 2017)

GOAL 4: Schematic Design – Identify Path Forward

May – Oct 2017

- Stakeholder Meeting 03 (September 2017)
- Public Consultation 03 (September 2017)



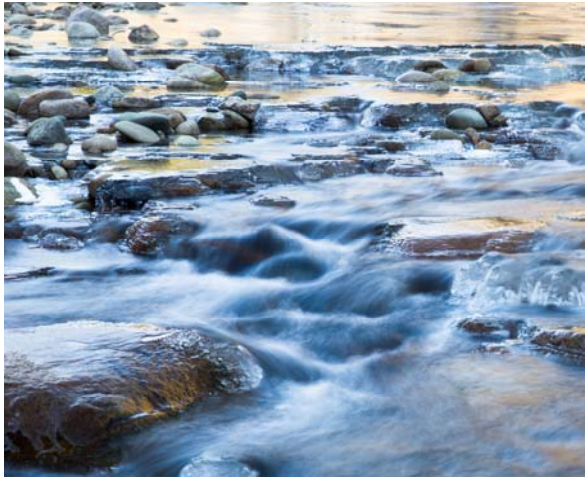
What activities should take place in the park?



What kind of landscapes should be in the park?



What role does the Black Creek play in the form of the park?



What are the desired public uses?

- Flexible spaces for gathering / events?
- Children's play opportunities?
- Splash pad?
- Accessible walking circuits with multiple trail loop options?
- Outdoor skating?
- Bird observation deck?
- Sustainable / stormwater information + education?
- Community gardens?
- Integrated art in the park?
- All-season washroom facilities?
- VMC wetland arboretum?
- Innovative re-use of stormwater?
- Aesthetic water body (potential for recreation)?
- Sustainable transitional water feature?
- Dog off-leash area?
- Art garden with revolving installations?
- Picnic / shelter areas?

What we have heard so far

Big Picture

- This site has terrific potential
- Needs to be unique, innovative + aesthetically pleasing
- This project can make people more excited about the VMC
- The stormwater ponds need to be functional but they also have to give people a reason to come to the park
- Figuring out how to pay for this park and future work along Black Creek south of Hwy 7 is a significant accomplishment

What we have heard so far

Design

- Define the soul of the project
- Use foresight to imagine what the city will look like in 20-30 years
- Location, access and connectivity are key. The park is within 5 minutes to the subway.
- Engage the senses
- Consider the park in context with future parks nearby (Edgeley Pond + Park could be a place of tranquility and reflection)

What we have heard so far

Park Uses

- Create opportunities to walk – this is a priority
- There should be places to sit
- Create flexible spaces for programming
- Park use ideas: public art, fountains, moving water, washroom facilities

Water Management

- Make sure the ponds manage SWM water and protect upcoming developments
- Consider SWM water quality treatment + maintenance
- Connect to the Black Creek work happening south of Hwy 7

What we have heard so far

Process

- Be clear on what's open and not open for design influence
- Engage stakeholders and the public early

Timing

- Stay connected with adjacent developments to align construction timing as much as possible

Draft Vision Elements

A dynamic and iconic integrated open space that:

- Improves Black Creek water quality
- Improves SWM water quality
- Control flooding
- Celebrate water and the Black Creek heritage
- Builds on native ecology
- Functioning ecological creek
- Connect the VMC neighbourhood
- Reflects on local history
- Creates a unique public experience
- Mature tree canopy
- Year-round programming and amenities
- Provides strong connections to adjacent developments
- Enhance animal and bird habitat
- Create space for gathering
- Connect urban to natural experiences
- Protect and enhanced natural heritage
- Incorporates public art
- Showcase innovate sustainable landscapes

Draft Principles

1. A Park for People
2. Celebrate Water
3. Enhance Ecology + Establish Habitat
4. Create a Hierarchy of Connections
5. Transition Space Between Urban + Natural Landscapes
6. Demonstrate + Educate + Activate
7. Create an Iconic Landscape
8. Design for the Future



Edgeley Pond + Park

Keep up to date at Vaughan.ca/EdgeleyPond

Email us at edgeley@dtah.com