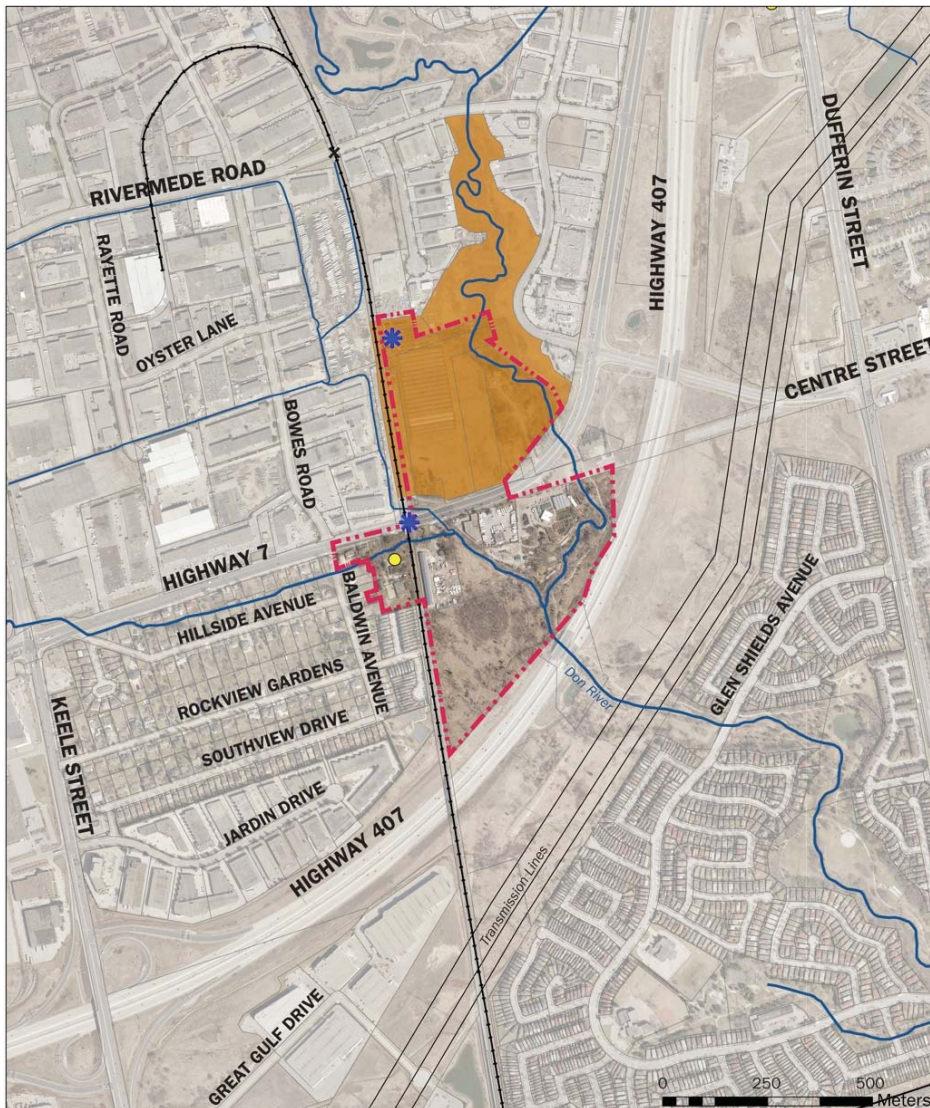









BACKGROUND Cultural Heritage

3

Background Review – Cultural Heritage



- First settlers in the area mid 1800s
- Thornhill Train Station from late 1800s
- 1920s greenhouses built
- CN Rail line /GO Barrie Line crosses over Highway 7 on the 1963 rail bridge structure
- One listed heritage property and other built heritage resources / cultural heritage landscape features of interest within the study area

- | | |
|--|--|
|  Site Boundary |  Railway Crossing |
|  Industrial Landscape |  Heritage Inventory |
|  Railway |  Cultural Heritage Resource |
|  Watercourse | |