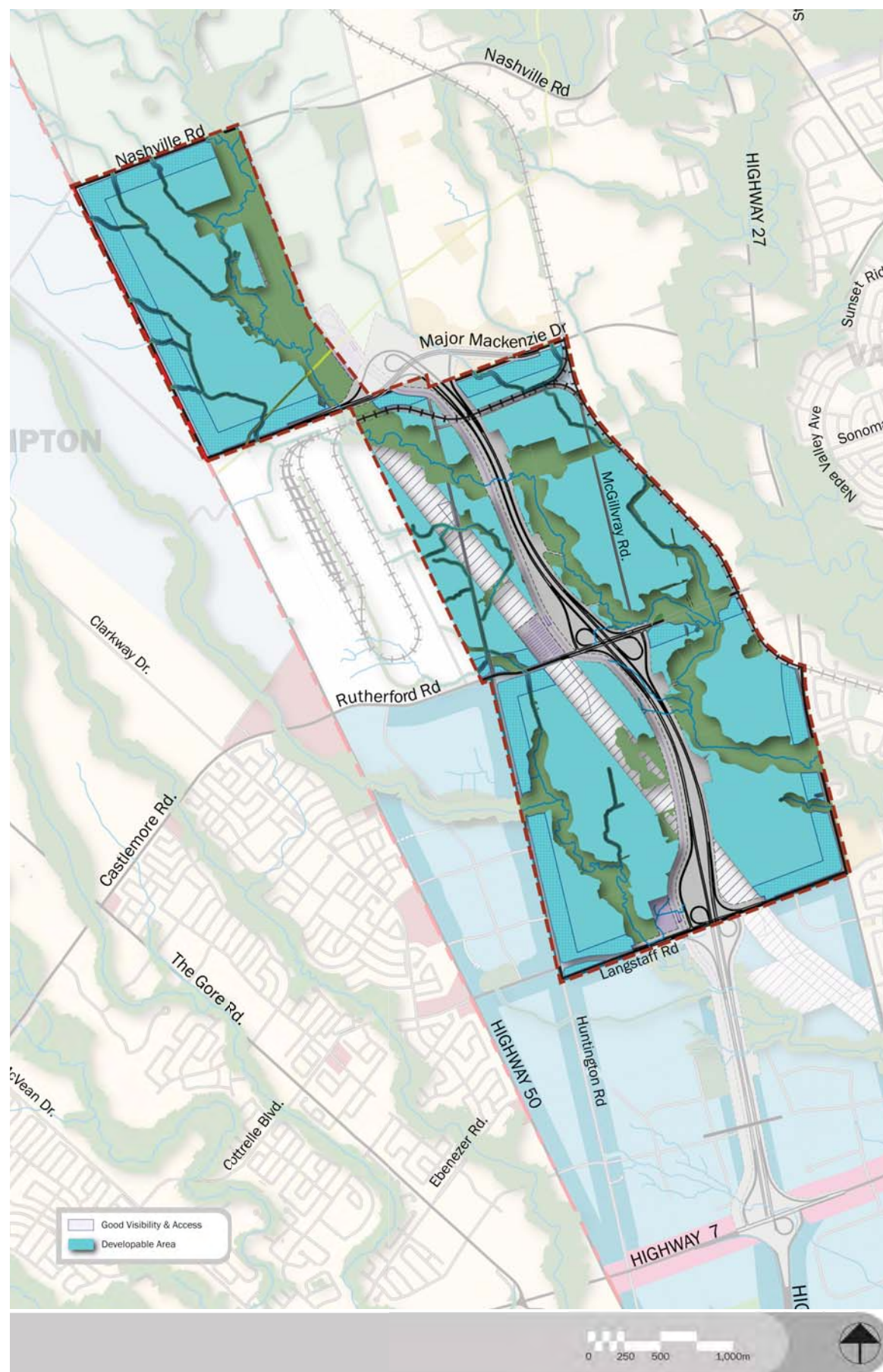


West Vaughan Employment Secondary Plan



Open House
April 22, 2010



Introduction

Planning Directions

- Plan the WVEA to accommodate and attract large scale industrial employment uses by providing for large parcel sizes to ensure flexibility
- Leverage the existing rail infrastructure, including the CP Intermodal facility
- Develop a connected local road network to provide convenient access to the Highway 427 Corridor and support transit, bicycle and pedestrian movement
- Attract green industries and encourage the development of related industry clusters
- Protect and enhance natural heritage resources
- Prioritize sustainable design, including stormwater management and natural connectivity, and implement high quality and affordable urban design guidelines
- Maximize the use of the hydro corridor for the use of natural heritage, recreational, transit and other uses

