

C 19
COMMUNICATION
CW (WORKING SESSION)
June 1/16
ITEM - 6



Vaughan City-Wide PUBLIC ART PROGRAM

Committee of the Whole

June 1, 2016



C19 18

Purpose

The purpose of the City-Wide Public Art Program is to provide a guiding framework, public art policies, and establish a public art process that will maximize opportunities for public art in the City of Vaughan



Definition of Public Art

Public Art

Public art is art that:

- › is physically or visually accessible,
- › is on public and private lands,
- › is created by or in collaboration with artists,
- › has aesthetic qualities,
- › is context specific,
- › can be a variety of media,
- › may be permanent or temporary, and
- › has been selected, commissioned or acquired in a process supported by the principles and methods of the City of Vaughan's Public Art Program.

Types of Public Art

There are three main types of public art that should be considered based on the unique requirements and characteristics of the site identified for public art.

Type 1

INDEPENDENT
SCULPTURE
or DISCRETE
ELEMENT



// FLOWER POWER BY MARK DI SUEVERO, TORONTO ON



// UNTITLED BY JEAN-PIERRE MORIN, TORONTO ON

// SHADOWS II BY JAUME PLENSA, MONTREAL QC



Type 2

SITE SPECIFIC

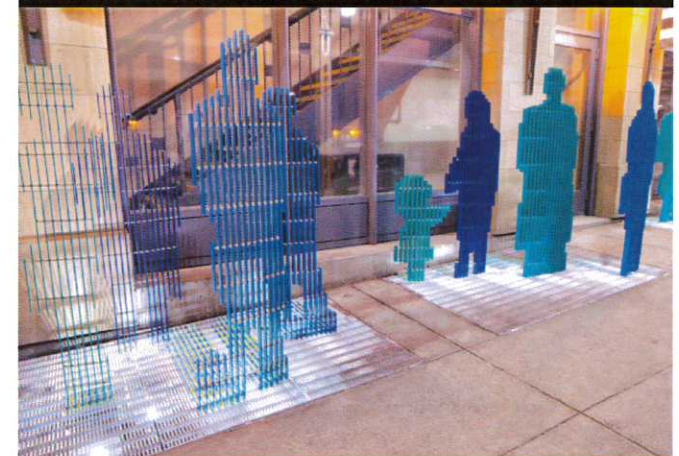


// LIQUID ECHO BY CATHERINE WIDGERY, TORONTO ON

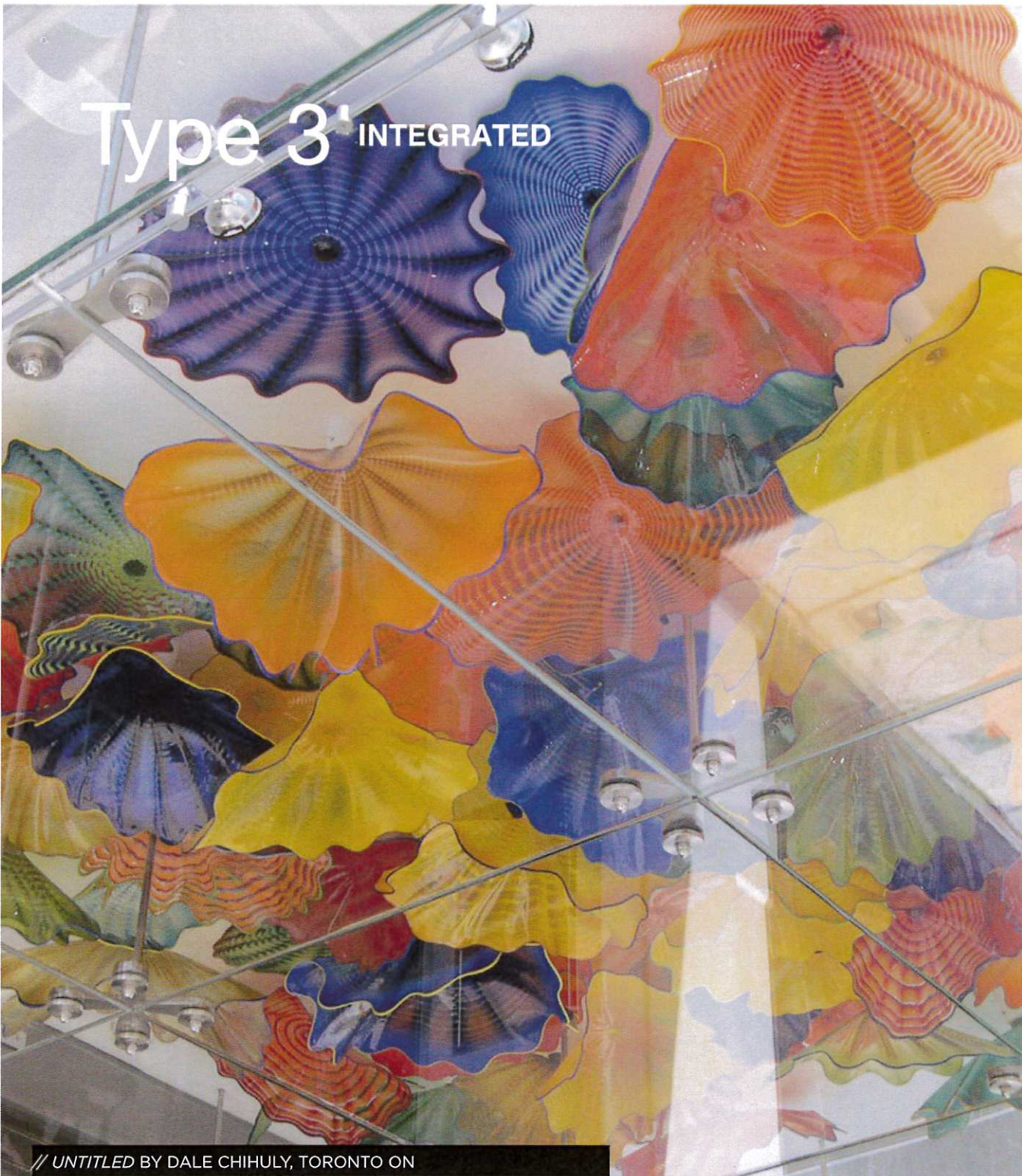


// COMBINATION OF THE TWO BY MATT MULLICAN, TORONTO ON

// TRANSIT STORY BY JILL ANHOLT, CALGARY AB



Type 3' INTEGRATED



// UNTITLED BY DALE CHIHULY, TORONTO ON



// FOREST WALK BY ED PIEN, TORONTO ON

// SNAKE PATH BY ALEX SMITH, SAN DIEGO CA



Roles for Public Art

Placemaking

Gateway Marker

Landmark

Memorial

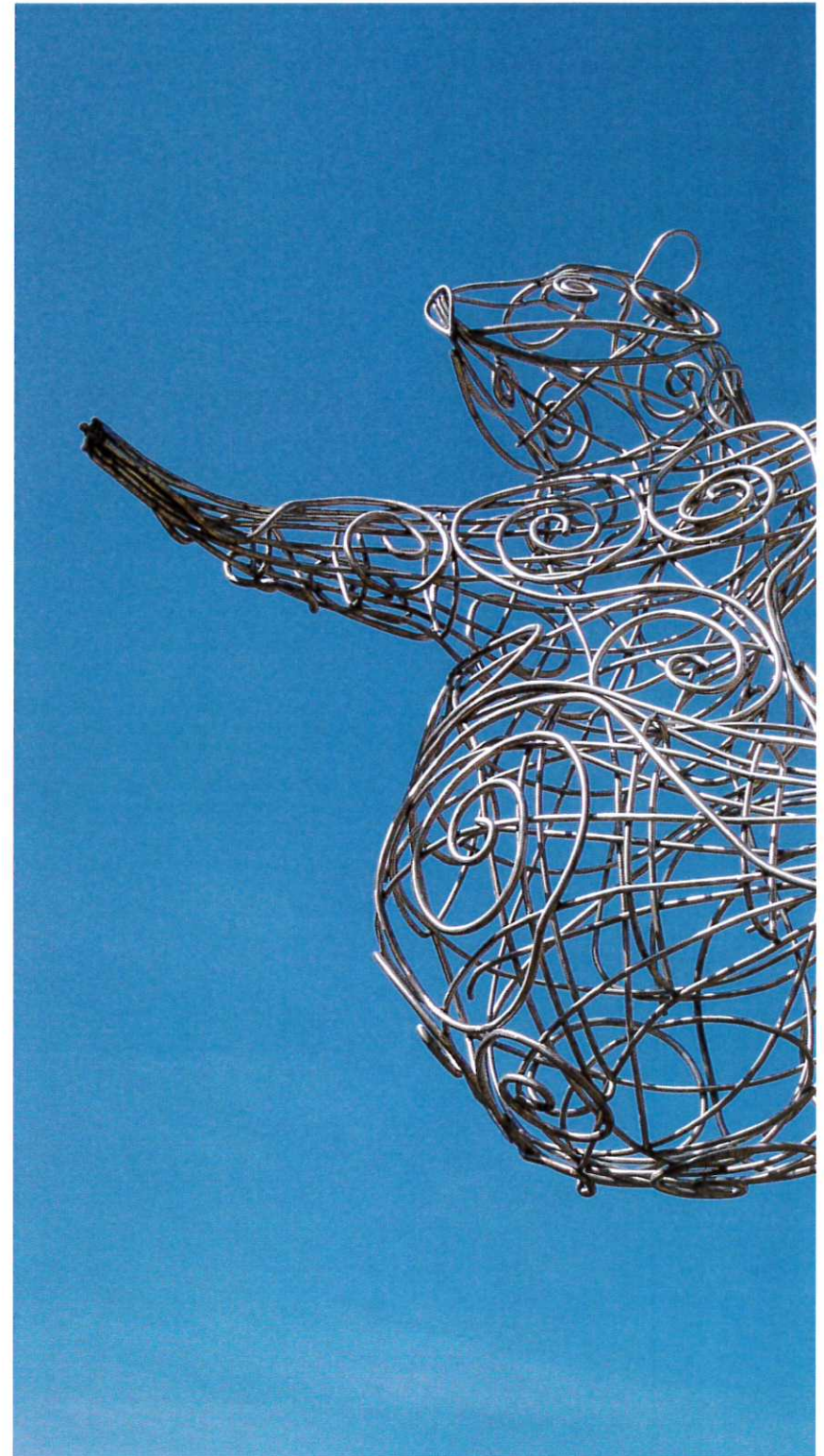
Local Focal Point

Wayfinding

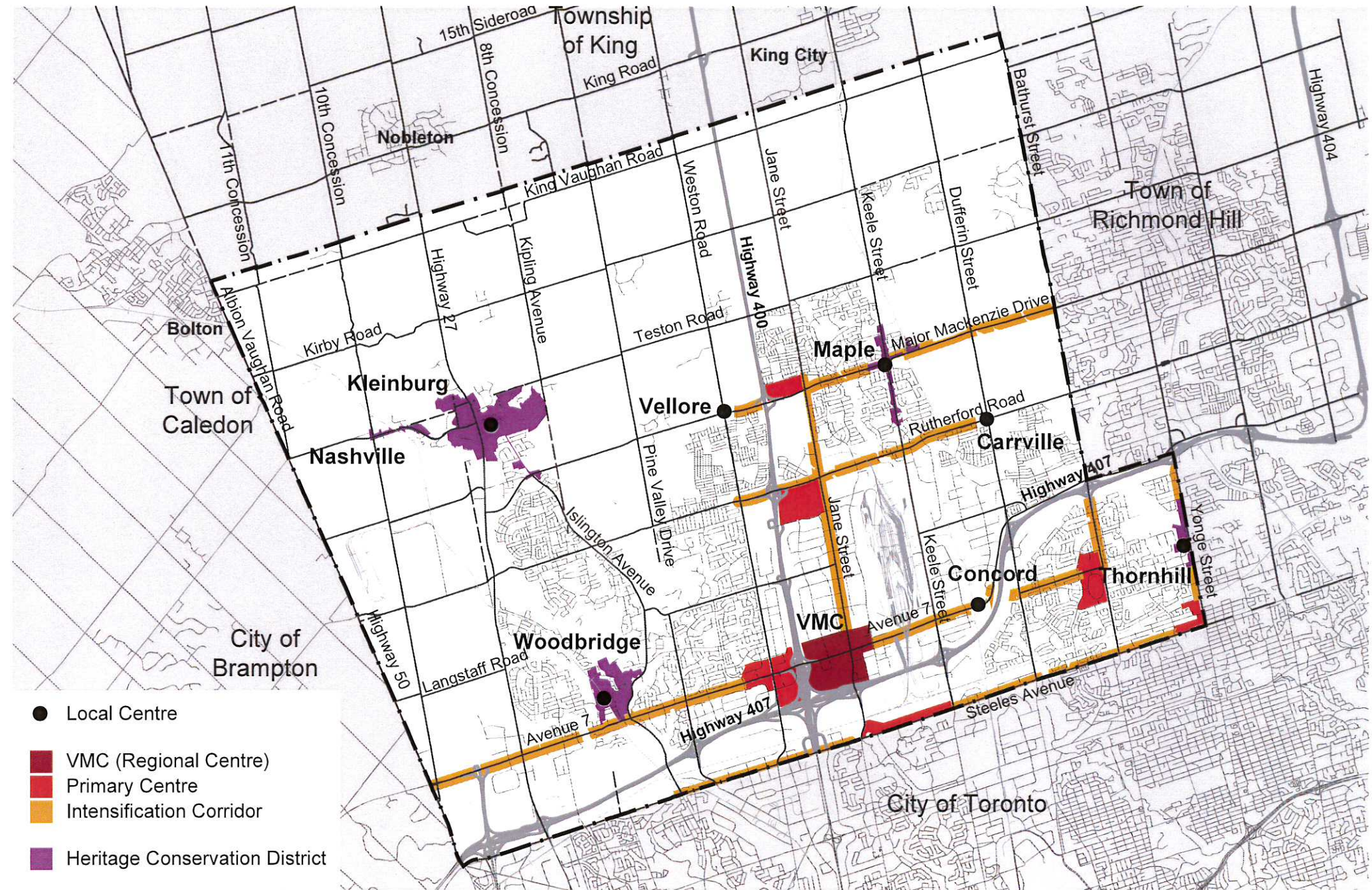
Interpretation

Functional Element

Activation and Animation



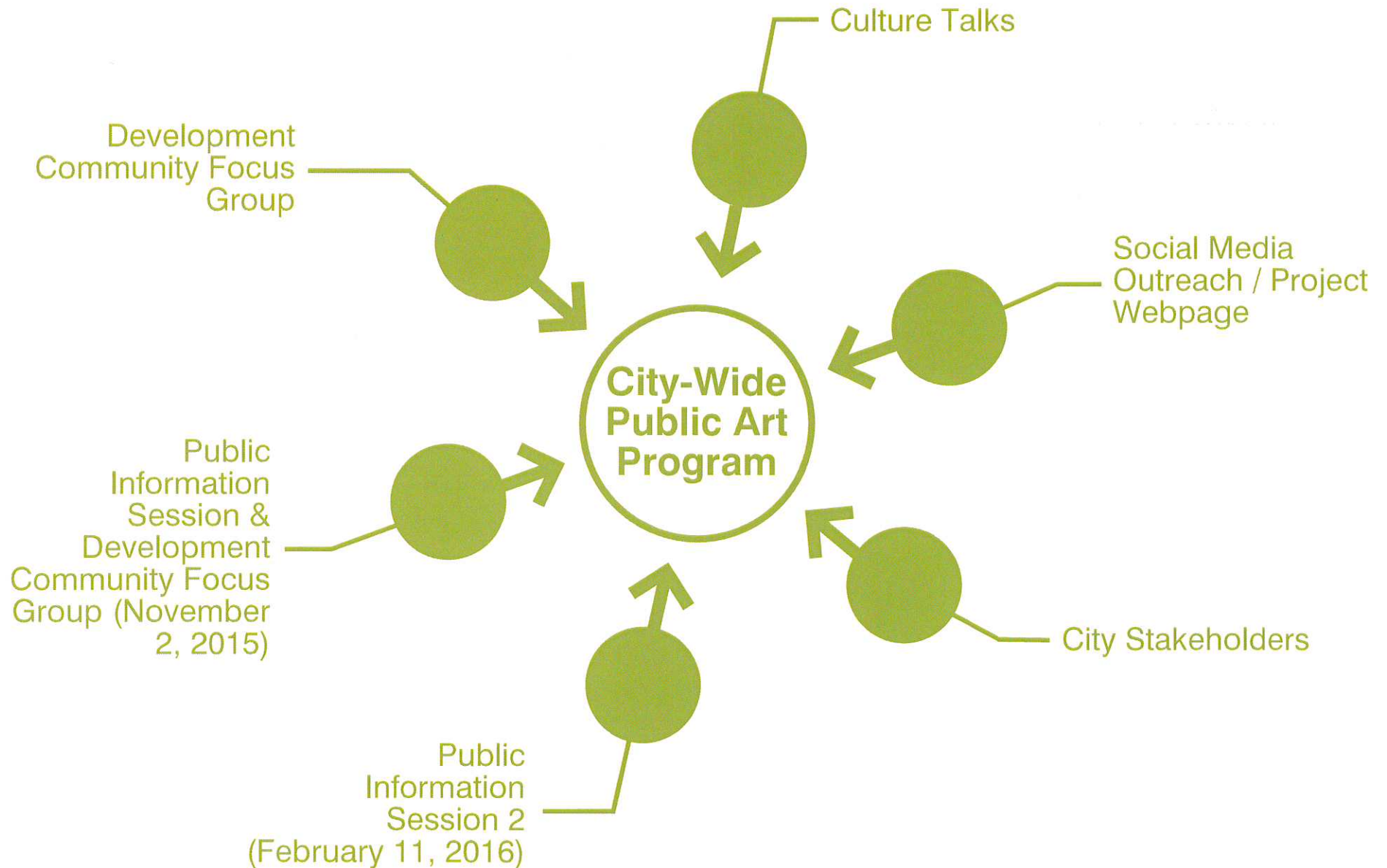
City-Wide Study Area



Study Process



Outreach



What We Heard

“

cultural diversity

interactive

inclusive

accessible

the McMichael is a local treasure

reinterpret the group of seven

create a landmark sculpture at the McMichael

engaging

integrate public art in the public realm

create group of seven inspired furnishings in

Kleinburg

public art at Mackenzie Vaughan Hospital

commission earthworks

the desire for public art is here!

connect to nature in Vaughan

identify Vaughan with art as much as it is with

recreation

create a self directed public art tour

share Vaughan's legacy

be provocative

keep the public art commissioning process simple for

development applications

gateways and intensification corridors are key

locations for public art

public art is 'public' not only by ownership or by location, but by the **public process** *through which it is commissioned*

”

Aspirations

inclusive
multicultural
contemporary
vibrant
educating
interactive
creative
nurturing
opportunities for artists
accessible
engaging
diverse
multi-disciplinary
integrated
express place





Vision

The City-Wide Public Art Program provides a **guiding framework** that will maximize opportunities to create **public art** that **enhances community identity**, **builds civic pride**, **orients visitors** and **celebrates local and national talent**. By **animating the City's public realm** in ways that contribute to Vaughan's **growing identity** as a dynamic, walkable, "city of choice," public art **fosters a vibrant community life** that is **inclusive, progressive, sustainable** and expresses the **unique character of Vaughan**.

Opportunities for Public Art in Vaughan

1 Downtown – Vaughan Metropolitan Centre



2 Primary Centres / Local Centres



3 Major Parks, Open Space and Trails



4 City-Wide Public Institutions



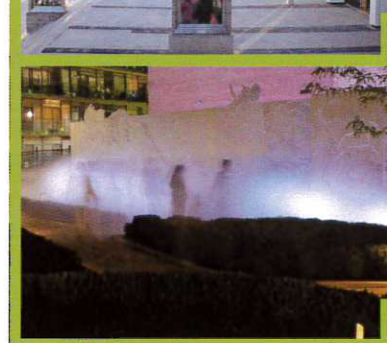
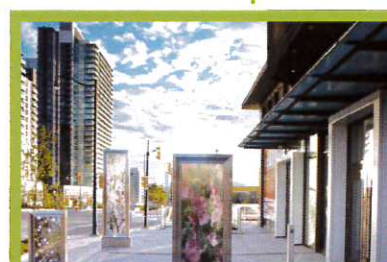
5 Intensification Corridors / Gateways



6 Heritage Conservation Districts



7 Private Development Sites



Selecting Locations for Public Art



- 1 Monitor long term capital budgets and projections, and planning documents and guidelines
- ↓
- 2 Reinforce community planning objectives and urban design guidelines
- ↓
- 3 Select locations that are accessible, visible and compatible with surrounding sites and uses.
- ↓
- 4 Prioritize compatible high profile capital projects
- ↓
- 5 Balance a range of locations and opportunities by identifying smaller scale projects

Strategies for Locating Public Art



Types of Locations for Public Art

Gateways

Parks, Open Space and Trails

Historic Buildings and Heritage Sites

Public and Cultural Institutions

Key Destinations/Points of Interest

Premium or Enhanced Streetscapes

Important intersections

View Termini

Infrastructure

7 Focus Areas

- Local Centre
- VMC (Regional Centre)
- Primary Centre
- Heritage Conservation District
- Intensification Corridor

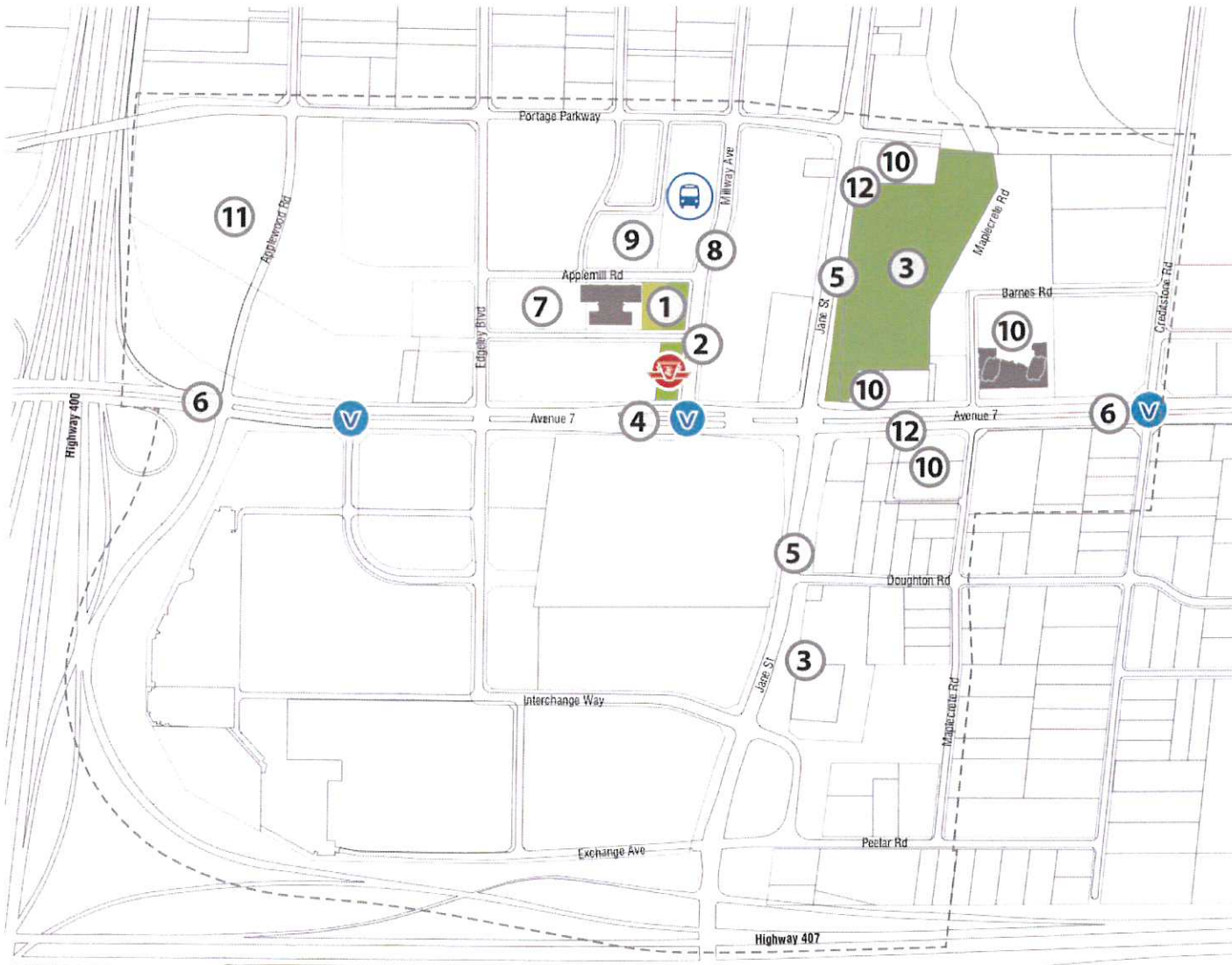
- 1 Vaughan Metropolitan Centre (VMC)
- 2 Kleinburg-Nashville Heritage Conservation District
- 3 Woodbridge Heritage Conservation District
- 4 Vaughan Mills Centre
- 5 Vaughan Healthcare Centre
- 6 Maple Heritage Conservation District
- 7 Thornhill



1 Vaughan Metropolitan Centre

Public Art in the VMC is addressed in a separate document:
the **VMC Culture & Public Art Framework**

2021



2 Kleinburg-Nashville

Preferred Locations

The following Preferred Locations for Public Art have been identified. Priority Types are highlighted in colour.

1 Gateways

- The main experiential gateways are the thresholds of village character along Islington Avenue, Nashville Road and Stegman's Mill Road
- The North corners of Islington Avenue and Major Mackenzie Drive.
- Important signage/wayfinding gateways occur where Islington Avenue meets Highway 27 and Major Mackenzie Drive.
- On the east and west sides of Highway 27 at Nashville Road
- Nashville Road west of the District Boundary

2 Parks, Open Space and Trails

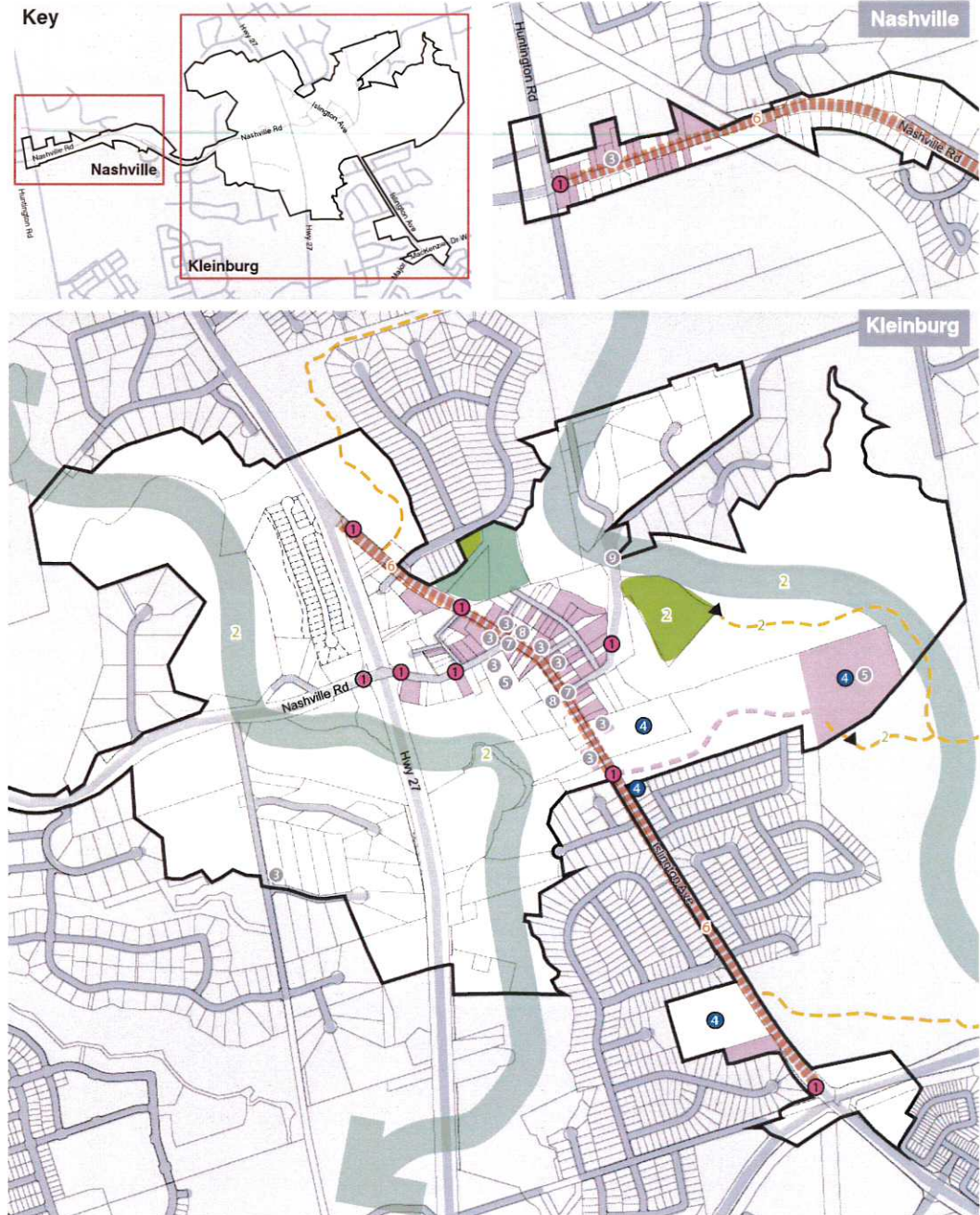
- The Humber River and associated natural heritage surrounds Kleinburg to the east and west.
- Trailheads for the William Granger Greenway are accessible from Bindertwine Park and from the McMichael grounds.

4 Public and Cultural Institutions

- McMichael Canadian Art Collection
- Kleinburg Public Library
- Kleinburg Public School
- Ecole Elementaire La Fontaine
- Pierre Berton Discovery Centre (conceptual)

6 Premium or Enhanced Streetscapes

- Islington Avenue, from Major Mackenzie to Highway 27
- Nashville Road, from Islington Avenue to Highway 27



3 Woodbridge

Preferred Locations

The following Preferred Locations for Public Art have been identified. **Priority Types** are highlighted in colour

1 Gateways

- › Schedule 8 of the Woodbridge HCD Plan
- › Woodbridge Avenue Gateways:
- › Islington Avenue & Woodbridge Avenue (The River Gateway)
- › Kipling Avenue & Woodbridge Avenue (The Commercial Gateway)
- › Woodbridge Avenue and Wallace Street (The Wallace Street Gateway)
- › Woodbridge Avenue at Market Lane (Market Lane Gateway)
- › Woodbridge Avenue between Clarence and Market Lane (The Plaza Gateway)
- › Woodbridge Avenue and Clarence Street (The Clarence Street Gateway)
- › The District Plan notes that "Porter Avenue should be landscaped as a prominent gateway" into the Woodbridge Fairgrounds.

2 Parks, Open Space and Trails

- › Humber River
- › Woodbridge Fairgrounds
- › Hayhoe Mills Park
- › The Country Club Golf Course
- › Doctors Mclean District Park
- › Woodbridge Memorial Park
- › Fred Armstrong Parkette
- › See Page 94 of the Woodbridge HCD Plan

3 Historic Buildings and Heritage Sites

- › Wallace House
- › William Farr House
- › Woodbridge Memorial Park and Tower
- › Donald Grant House
- › John Abell House
- › Thomas Wright House
- › McGillivray-Shore House
- › Gilmour Hotel
- › Inkerman Hotel
- › Memorial Cemetery & Woodbridge Cenotaph

6 Premium or Enhanced Streetscapes

- › Woodbridge Avenue (Primary)
- › Kipling Avenue (Secondary)



4 Vaughan Mills Centre

Preferred Locations

The following Preferred Locations for Public Art have been identified. Priority Types are highlighted in colour.

2 Parks, Open Space and Trails

- › Black Creek Corridor and Greenway,
- › Proposed Neighbourhood Parks
- › Urban Squares and courtyards
- › Connections to a Natural Heritage corridor is possible in the northwest quadrant
- › The West Don River Valley is a major greenway in the area

9 Infrastructure

- › Existing Bus Terminal at the northeast corner of the Shopping Centre and Potential Future Transit Hub at Jane Street and Rutherford Road including bus and rapid transit stops and a potential subway station
- › Bridges crossing Highway 400 at Rutherford Road and Bass Pro Mills Drive



5 Vaughan Healthcare Centre

Preferred Locations

The following Preferred Locations for Public Art have been identified. Priority Types are highlighted in colour.

① Gateways

- › Main entries off Jane Street and Major Mackenzie Drive
- › See Page 7 of VHCP Streetscape Concept

④ Public and Cultural Institutions

- › Mackenzie Vaughan Hospital

⑥ Premium or Enhanced Streetscapes

- › Jane Street
- › Major Mackenzie Drive
- › Key internal streets

⑨ Infrastructure

- › Future transit hub south of Major Mackenzie Drive



6 Maple

Preferred Locations

The following Preferred Locations for Public Art have been identified. Priority Types are highlighted in colour.

1 Gateways

- › At entry points to the HCD along Major Mackenzie Drive and Keele Street
- › Keele Street, north and south
- › Major Mackenzie, east and west

4 Public and Cultural Institutions

- › Vaughan City Hall
- › Maple Community Centre and Library
- › Civic Centre Resource Library
- › St. Joan of Arc Secondary School
- › St. David's School

6 Premium or Enhanced Streetscapes

- › Major Mackenzie Drive
- › Keele Street



7 Thornhill

Preferred Locations

The following Preferred Locations for Public Art have been identified. Priority Types are highlighted in colour.

1 Gateways

- › Entrances to Thornhill Village from west on Centre Street and from north and south on Yonge Street
- › On Centre Street at Bathurst Street and at New Westminster Drive
- › At main entrance off Bathurst Street
- › At Bathurst Street and Clark Avenue West
- › At main entrance off Clark Avenue West

3 Historic Buildings and Heritage Sites

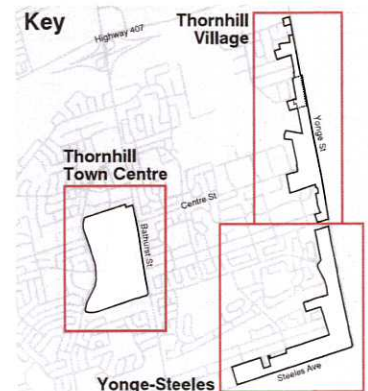
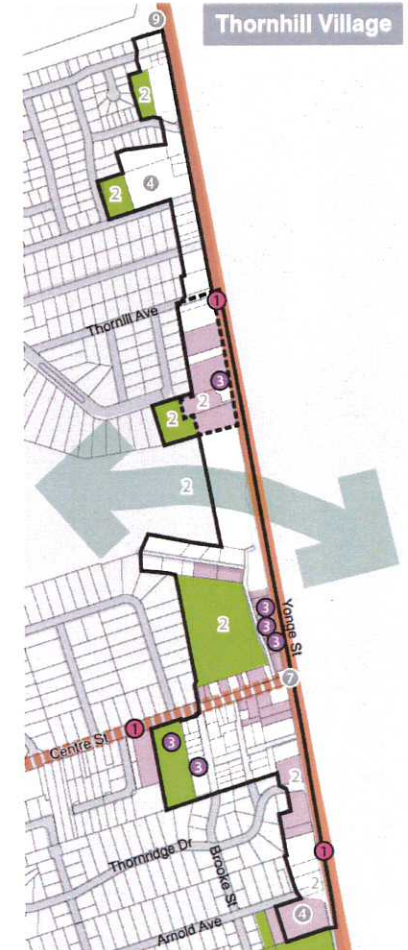
- › The Francis Block
- › Thoreau MacDonald House
- › Holy Trinity Anglican Church
- › William Armstrong House
- › Robert West House
- › Methodist Church
- › Soules Inn

5 Key Destinations

- › Cadillac Fairview Promenade Shopping Centre

6 Premium or Enhanced Streetscapes

- › Yonge Street qualifies as a Premium Streetscape
- › Centre Street qualifies as an Enhanced Streetscape
- › Steeles Avenue qualifies as an Enhanced Streetscape
- › Bathurst Street qualifies as an Enhanced Streetscape



Fostering Community Engagement

1. COMMUNITY-BASED PUBLIC ART PROJECTS

// SNOWCONE BY DIANA KONCAN AND LILY JEON, TORONTO ON



Fostering Community Engagement

2. TEMPORARY PUBLIC ART

// ASPENS BY NIKA BELIANINA, TORONTO ON

Fostering Community Engagement

3. IDEAS COMPETITIONS

// MIRAGE BY PAUL RAFF STUDIO, TORONTO ON

Fostering Community Engagement

4. CELEBRATIONS / LANDMARKS

// PASTURE BY JOE FAFARD, TORONTO ON



Fostering Community Engagement

5. ENGAGING VISITORS



An abstract sculpture featuring several vertical, polished metal poles. Intertwined with these poles are numerous long, thin ribbons in various colors including red, yellow, green, and black. The ribbons are draped and looped around the poles, creating a dynamic, flowing composition. The background is a clear, bright blue sky.

Commissioning Public Art

1. OPEN CALL COMPETITIONS

**2. LIMITED OR INVITATIONAL
COMPETITIONS**

**3. DIRECT COMMISSIONS AND
ACQUISITION**

**4. INCLUSION OF AN ARTIST AS A
DESIGN TEAM MEMBER**

Process for Acquiring Public Art

1

CITY INITIATED PROCESS



Funding

1 Public Art Reserve

1% of new parks, libraries, community centres and fire stations

2 Maintenance Funds Requirements

Pool 10% of public art project budget for a maintenance reserve

3 Partnerships and Additional Funding

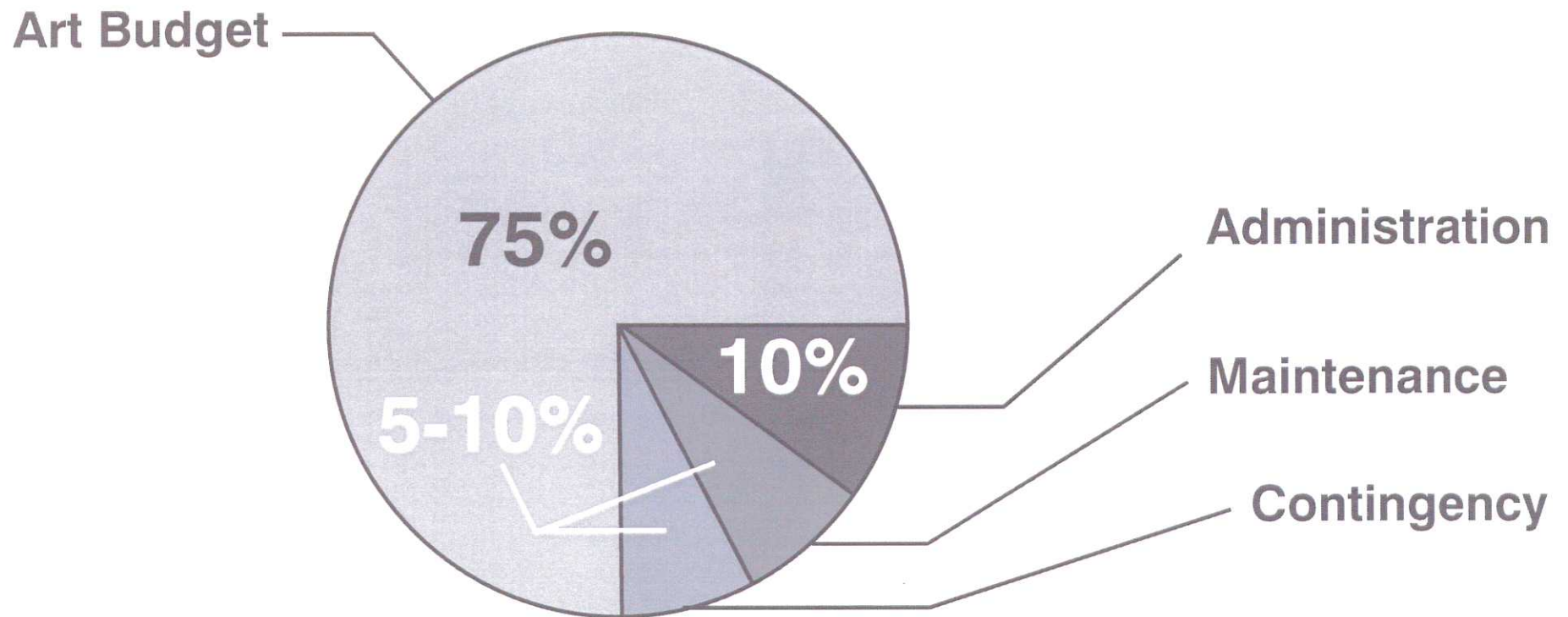
Work with local cultural organizations

Philanthropy

Proactively seek public-private-partnerships

Grants

Typical Budget Breakdown of a Project



Process for Acquiring Public Art

2

COMMUNITY
INITIATED
PROCESS



Community Initiated Public Art

Proposal may come from individual artist, artist collective, community or school group, business association or a foundation.

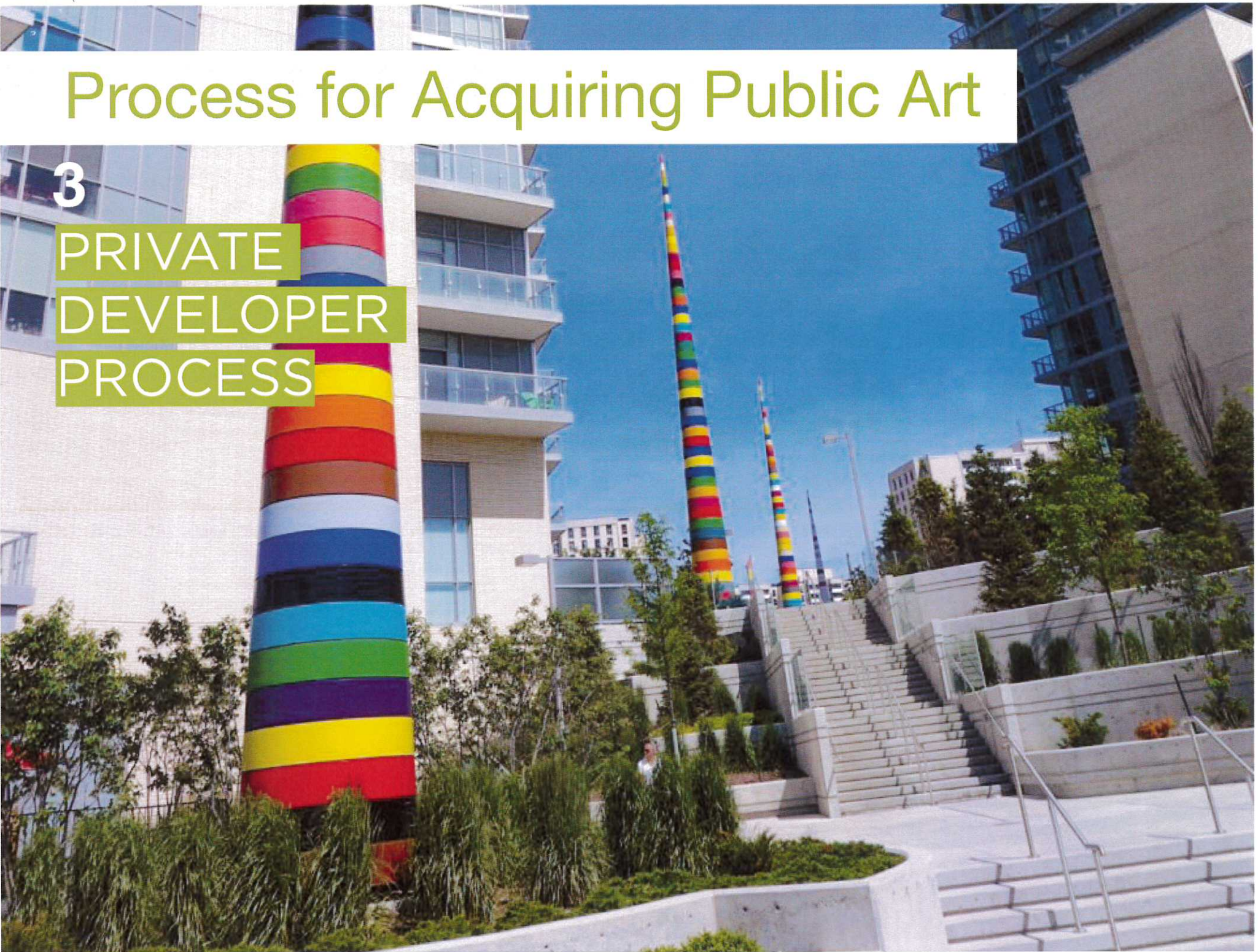
Public Art Advisory Committee reviews proposal based on art selection methods, appropriateness in the public realm, and relevance to the City's Public Art Program.

City not responsible for funding or maintenance and legal agreement ensures compliance, public safety etc.

Process for Acquiring Public Art

3

PRIVATE
DEVELOPER
PROCESS



Private Developer Options

1

On Site Contribution

The applicant commissions public art work to the value of the public art commitment and such works of art shall be located on publicly accessible locations of privately owned lands.

2

Off Site Contribution

The applicant directs the value of the public art commitment to the City's off site public art fund to be used towards City-supported public art on publicly owned lands.

3

Combination

The applicant commissions public art on private lands, and allocates a portion of the funds to the City's off site public art reserve fund.

Planning Tools

Section 37 of the Planning Act

Height and Density Bonusing

Section 51 (25) and (26) of the Planning Act

Plan of Subdivision

Section 45 (9) of the Planning Act

Powers of Committee

Site Plan Approval

Conditions of Approval

(Letter of Undertaking)

Operations and Maintenance

City responsible for the maintenance and conservation of all public art in the City's ownership

City to establish maintenance reserve for this purpose

City not responsible for maintaining community initiated art and reserves right to remove at its discretion

Private developer responsible for the maintenance of privately owned publicly accessible art

Implementation and Administration

Roles and Responsibilities



Next Steps

- » **Amend the Terms of Reference for the design Review Panel**
- » **Develop the Terms of Reference for the Public Art Advisory Committee**
- » **Prepare the guidelines for the public art and maintenance reserves for deliberation in the 2017 budget process**
- » **Review Section 37 policies (underway)**
- » **Explore pilot community based art project**