

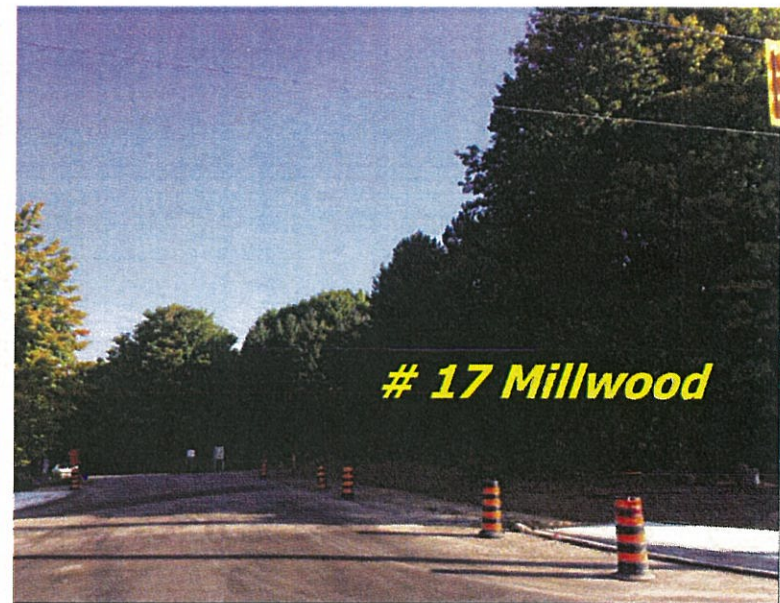
Millwood-Woodend Rate Payers Association Presentation

Applicant: Centra (BT1) Inc.

Location: 17 Millwood Parkway (N. side of Major Mackenzie Dr., E. of Pine Valley), City of Vaughan

File: Z.16.010 and 19T-16V002

September 7, 2016



Guidelines for Infill Development Recognize our Neighbourhood as an Established Community Area

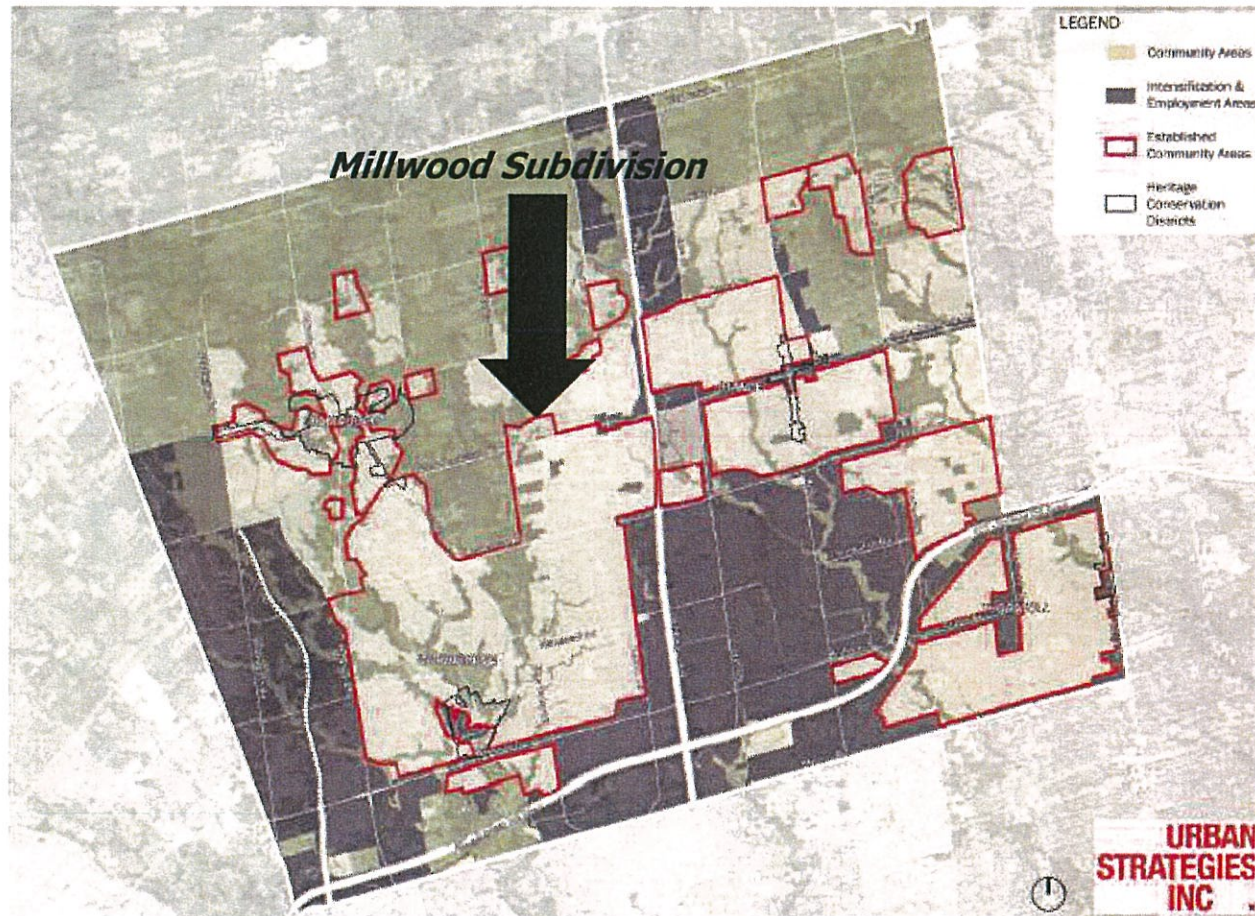
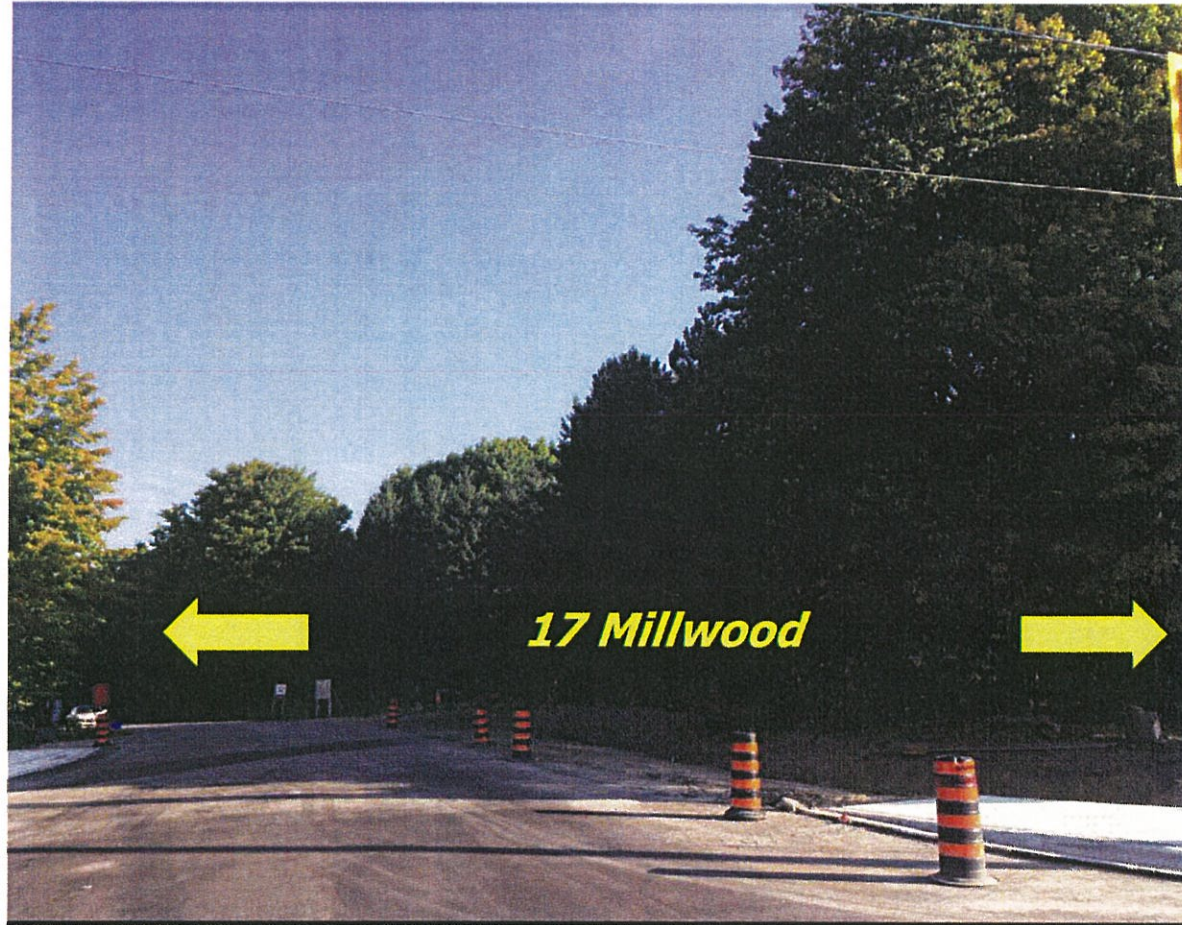


Figure 4: Vaughan's Established Community Areas

Vaughan's Established Community Areas (Figure 4 from Guidelines)

17 Millwood – Street View



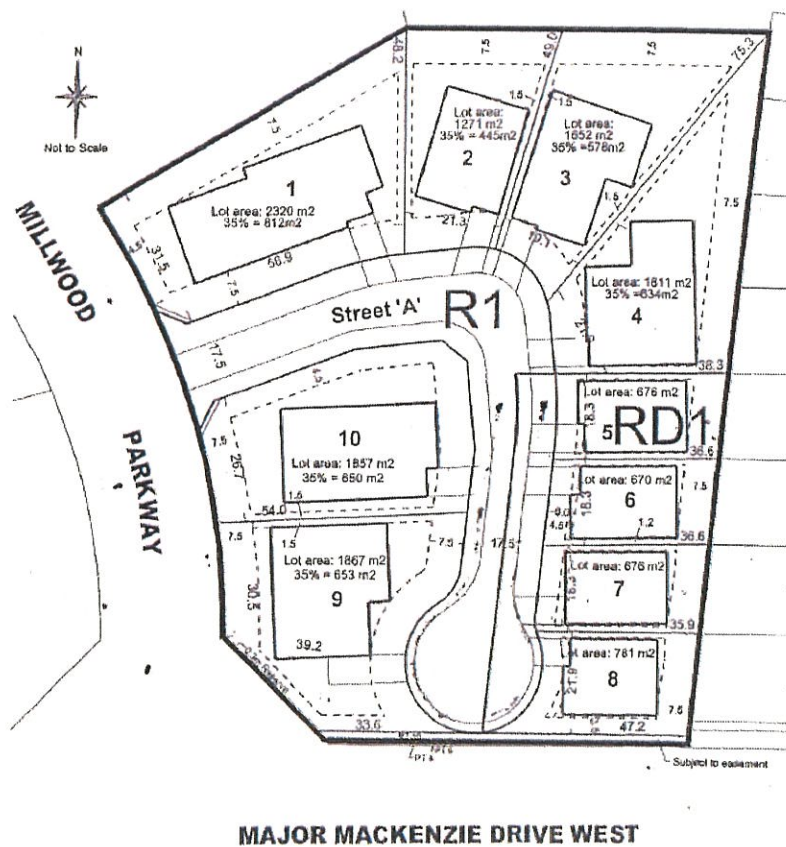
Entrance to Millwood Subdivision Facing North

17 Millwood – Aerial Photo



17 Millwood – Current Proposal / Resident's Proposal

Current Proposal



Resident's Proposal

