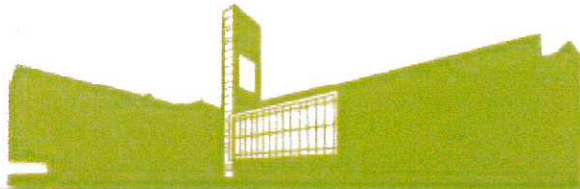


C1
Pierre Berton Tribute
Task Force
September 15, 2015
Item 2

Pierre Berton Exhibit – Feasibility and Options at (former) United Church Site

Prepared for the Pierre Berton Tribute Task Force

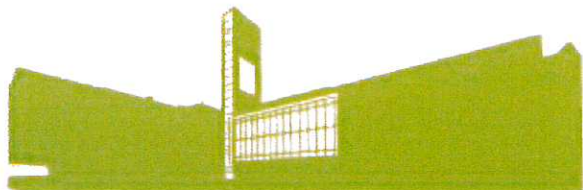


1

Recap of Previous Task Force's Program Vision for the Pierre Berton Discovery Centre

Extracted Vision of Discovery Centre (from original theme)

- To learn about themes in **Canadian history and culture** through **multi-media applications** and hands on **exhibits**.
- To educate about the people in Canadian history/culture in the same spirit of storytelling as the late Pierre Berton.
- To focus on the **life of Pierre Berton** as a long-time resident of Kleinburg, writer and **Canadian cultural icon**.

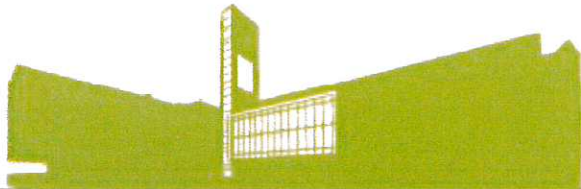


Sample Displays in Feasibility Study for Discovery Centre – interactive, utilizing photographs, and technology



Key Components for Exhibition Success

- Good interpretive plan –what is the story you want to tell? Are you telling it accurately, in an interesting way, is it easy to understand?
- Are you capturing the interest of various demographic groups. Does it appeal to a number of cultural groups, ages, etc.
- Quality of exhibition eg. quality lighting, photographs, technology, artifacts, dramatic and interesting layout, interactive and fun components, quality units for exhibition (technology etc.).
- Must be accessible.



4

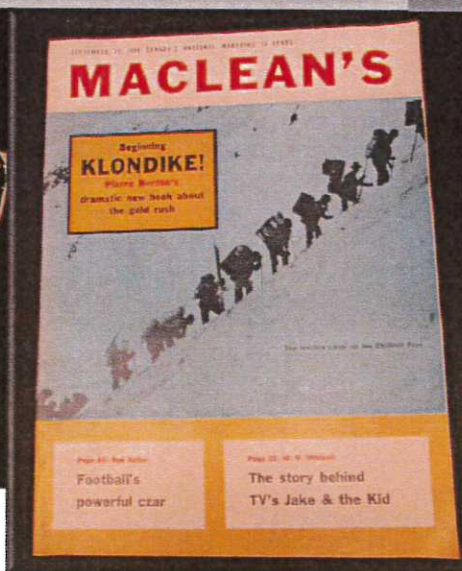
Pierre Berton Fonds and Janet Berton Fonds in Archives

Family photos, memorabilia, magazine collections, community events and committees, awards, film, personal collection relating to Klondike Gold Rush, Dawson City, and Railroad

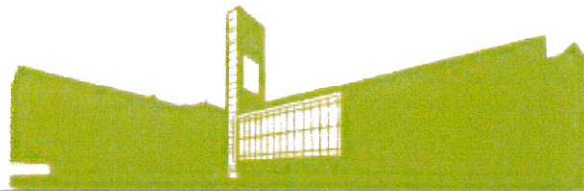


Pierre Berton Fonds and Janet Berton Fonds in Archives

Family photos, memorabilia, magazine collections, community events and committees, awards, film, personal collection relating to Klondike Gold Rush, Dawson City, and Railroad

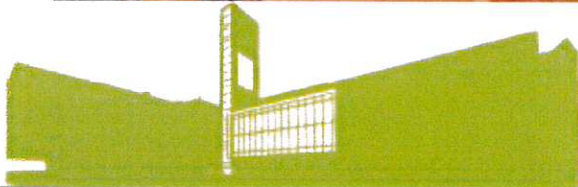


What are some exhibit /display options

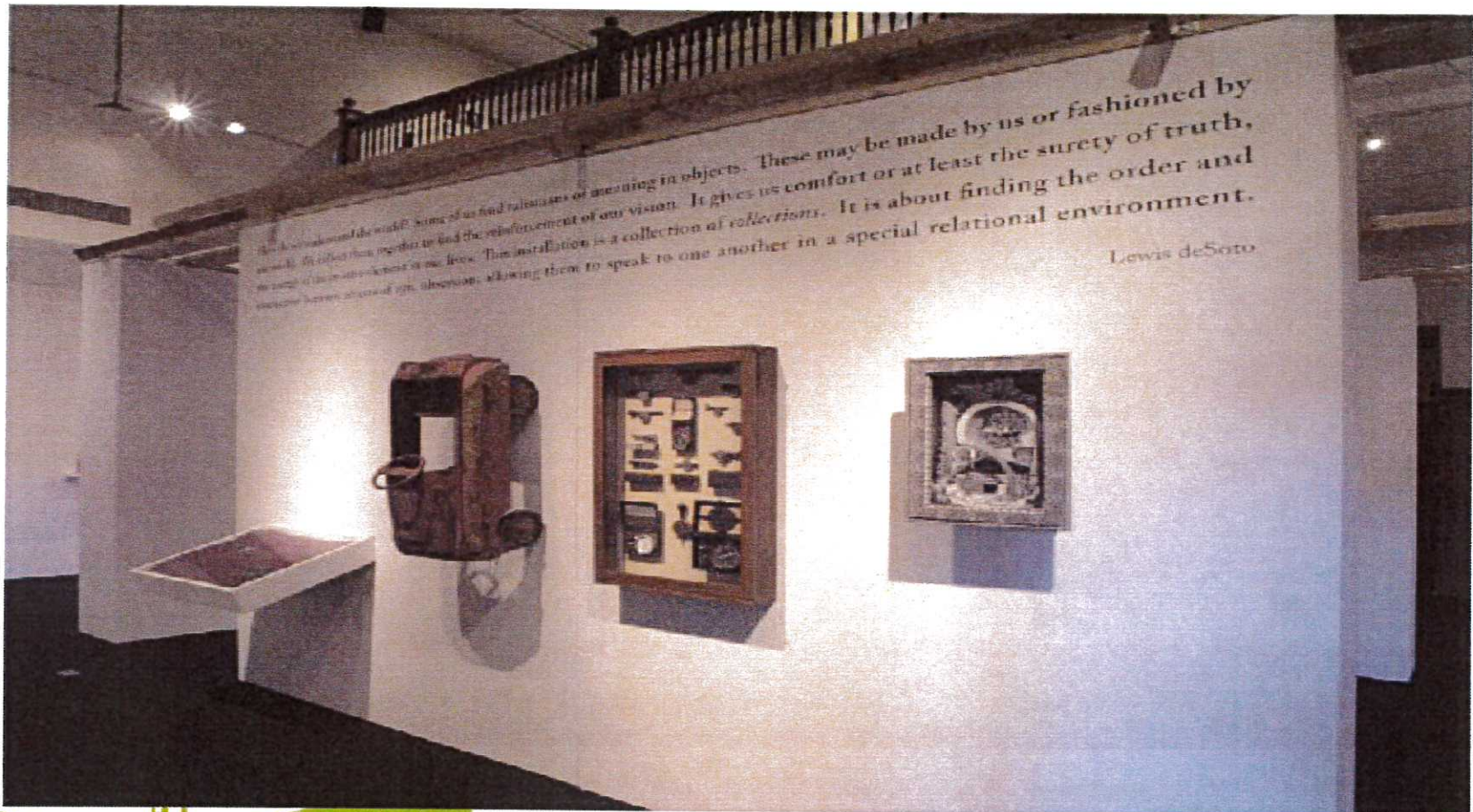


7

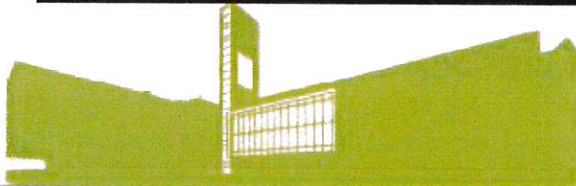
Display Wall with 3D item and screens (utilizing colour, lighting, images, artifacts, technology)



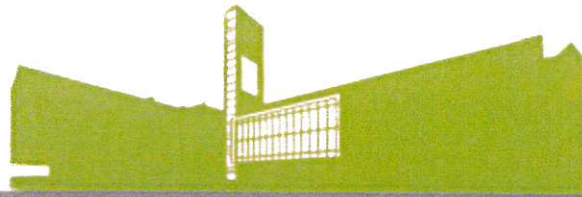
Display utilizing larger + smaller artifacts, text and interpretive panel



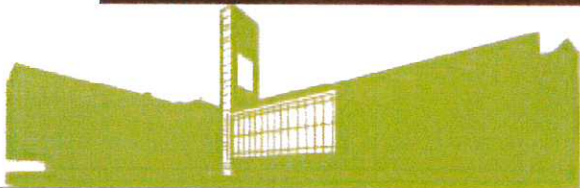
Wall display utilizing colours, lighting, artifacts, historical photographs, interpretive text



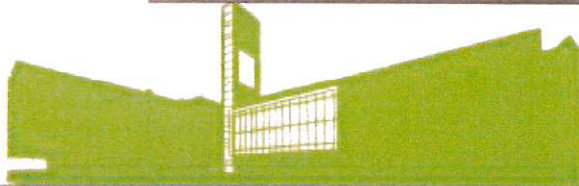
Utilizing touch screen technology to view interpretive videos, stories, on history or cultural themes



Utilizing walls, colours and lighting + combined with display cabinets



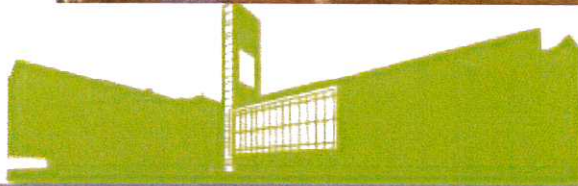
Display cabinet against walls with artifacts (utilizing lighting, cabinets and signage)



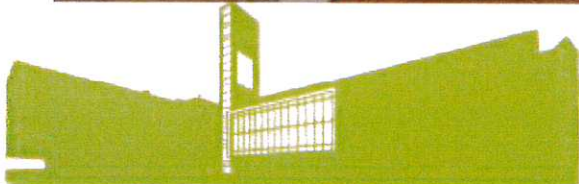
Moveable, retractable interpretive display walls utilizing a ceiling track



Moveable, retractable display units on castors/wheels

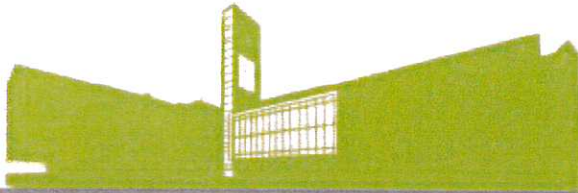


Temporary display walls with built in hanging system and lighting



Outdoor exhibits and furniture, public art

(Backyard has approx. 300 sq ft of flat usable space)

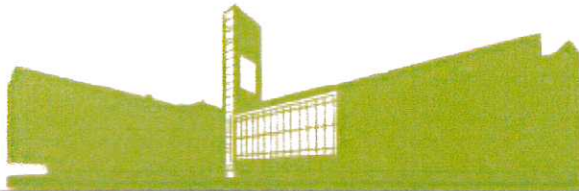


Outdoor exhibits and furniture, public art

(Backyard has approx.300 sq ft of flat usable space)



Former Kleinburg United Church, built 1926 in the Kleinburg/Nashville Heritage Conservation District

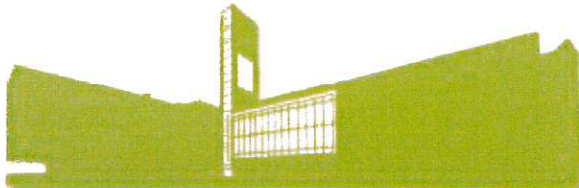


Interior main floor and potential exhibition opportunities

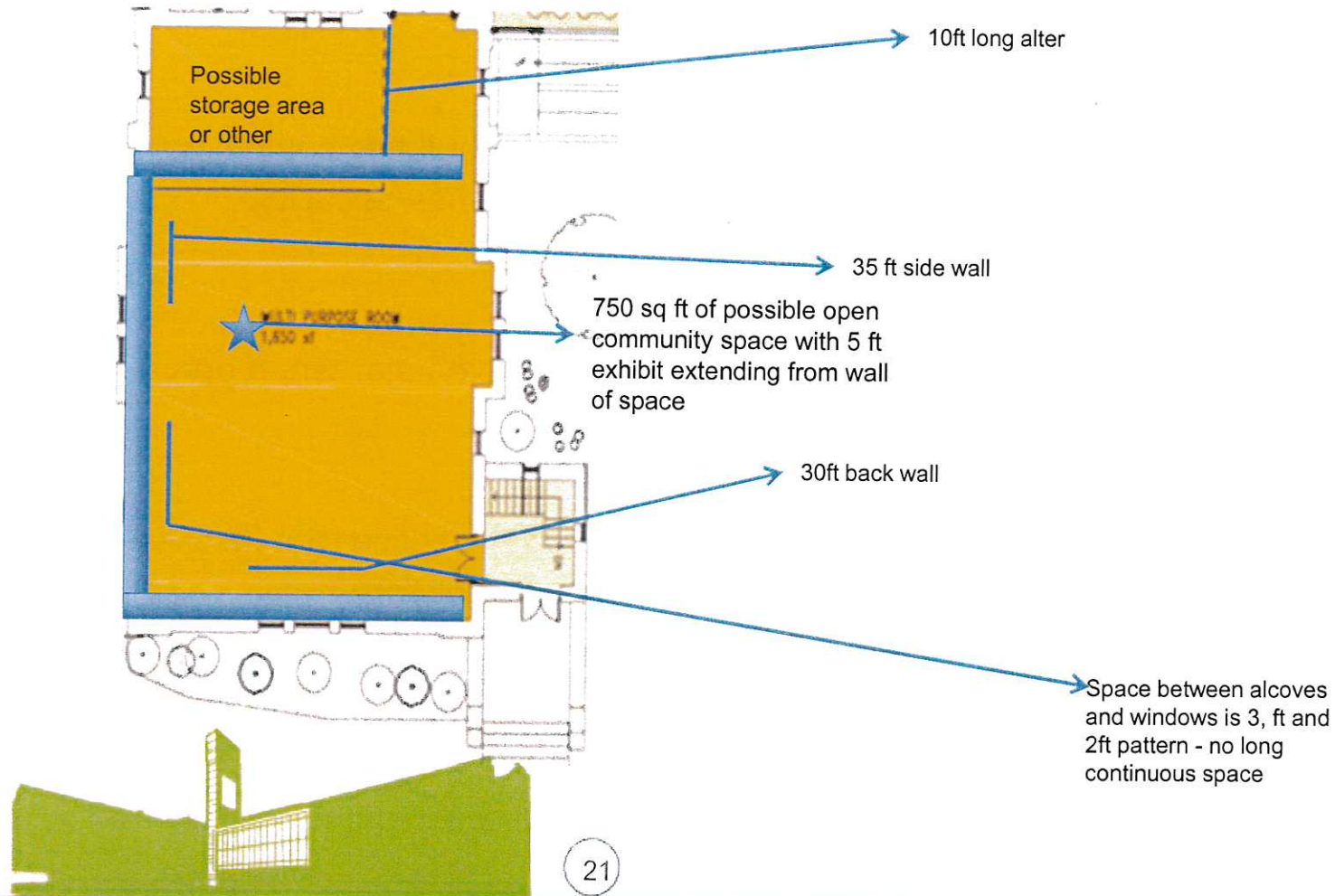


Interior

- Stain glass windows, high ceilings, wood paneling and buttresses along ceiling.
- New mechanical and lighting requirements for an exhibit.
- Consideration for a continuous linear wall surface area for exhibit.

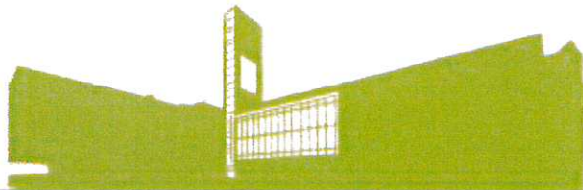


Potential Layout



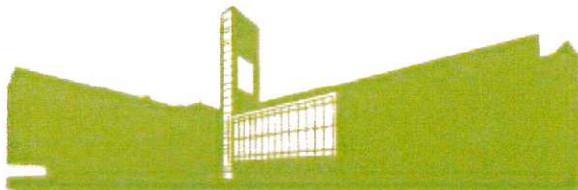
Considerations for Discussion

- Current budget could fund an excellent exhibit at the building location and could establish a foundation for an ongoing exhibit at the location, reusing technology, display cases/walls etc.
- Renovations to the building is timed so that upgrades to the building could have exhibition requirements in mind (lighting, electrical, wall finishes, security, flooring, and other installation needs).
- Exhibit could still be interactive, moveable/retractable (for events or when open) while still being able to accommodate community space.
- A smaller vision for the centre could be accommodated in the space that focuses on Pierre Berton, his life and impact to Canadian culture and history.



Considerations for Discussion

- No funding available for staffing the exhibit, so exhibition public viewing would be limited to those that use site or only if manned and operated utilizing volunteers.
- The curatorial function of multiple and changing would be limited and would rely on funding opportunities.
- Long-term funding of exhibitions is not in place and may not be supported on a yearly basis.



Current Status – available funds

- Current available funds for the exhibition development, and production is approximately \$650,000. (Needs to also consider - cost of hiring a consultant to plan and develop exhibit –approx. \$100,000.)
- Renovations to the building (which is consider a priority project) with an approved capital budget of \$980,000 will commence pending priority designation of the project from the current list of priority projects.
- No current budget/monies for staffing, the general operation and long-term programming for the site.

Key Actions

- Task Force report to Council with recommendations on exhibit any update on funding opportunities is due May 2016.
- The project plan for the site and community consultation to better define the community use of the space will be completed as part of the church renovation project to be led by the Building and Facilities Department.
- The project architect can present various concepts to the public regarding the space and the community can provide their preferred use/option.
- Capital projects utilizing the \$650,000 for the production of the exhibit and consultant/designer may be recommended for the 2017 budget process.

