

C2
Communication
Pierre Berton Tribute Task Force
February 10, 2017
Item #1

Pierre Berton Heritage Centre

DRAFT Interpretive Plan Options & Design Approach

February 10, 2017

Interpretive Plan

Introduction and Background

The Pierre Berton Heritage Centre will be located in the former Kleinburg United Church, located along the historic main street of Kleinburg, a heritage conservation district. The Centre will serve as both a community gathering space and will also present exhibits honoring the contribution of Pierre Berton to telling Canada's national story.

This Interpretive Plan is inspired by and rests on the excellent foundation created by:

- The Request for Proposal issued by the City of Vaughan: *Exhibit Consultant to Design, Develop, and Install Exhibits for the Pierre Berton Heritage Centre* of July 2016.
- A community consultation meeting held in September of 2016 by the City of Vaughan that helped to shape the direction of the project
- A subsequent kick-off meeting with representatives of the City of Vaughan Recreation Services, Lynch+Comisso Architects, E-Lumen International Consulting Engineers, and Reich+Petch Design International
- Ongoing design meetings between City of Vaughan, Lynch+Comisso, and Reich+Petch

Interpretive Plan

Goals for Exhibits

- To **present exhibits** that offer visitors an engaging and interactive experience of Canada's national story, driven and inspired by the work of one of Canada's pre-eminent authors and media pioneers, Pierre Berton
- To create exhibits that both complement the experience of the interior and create a noticeable visual impact
- To feature Berton's novel for children, ***The Secret World of Og***, with characters inspired by the author's children
- To identify **an inventory of modular exhibit elements** that can be used for various temporary exhibits to be created by the City of Vaughan and displayed at the Pierre Berton Heritage Centre
- To provide **space for community/public use events** on the main floor, which is to be open and flexible for hosting a wide variety of functions

Interpretive Plan

Other Exhibit Parameters

- Accessibility is a priority, not only to conform to legislation, but also to ensure that the space can be enjoyed by everyone
- The stained glass windows, vaulted ceilings, existing light fixtures, and wainscoting will be maintained
- Use wall space as much as possible for exhibits, working around the existing stained glass
- Multi-media units should be secure, built in, and able to shut off when not in use
- Develop modular, mobile display system (cases and graphic panels) for temporary exhibits
- History of the church and current renovation, along with commemorative plaques currently housed in the church potentially to be exhibited in the basement lounge space
- Use of the space will be for permitted events (for example, weddings or concerts). The City of Vaughan may open the space for viewing exhibits during special events such as the Binder Twine festival.

Interpretive Plan

Audiences for Exhibits

- Local residents of Kleinburg who already have some familiarity with Pierre Berton and his work and would like enjoy the exhibits in detail
- Local residents of Kleinburg who are less familiar with Pierre Berton and his work and would like to gain some new insights.
- Visitors to Kleinburg, including families, on a leisure outing who drop in to enjoy the space and its exhibits as part of the Kleinburg heritage experience
- Those attending events in the space who may wish to view the exhibits as an enhancement to their experience

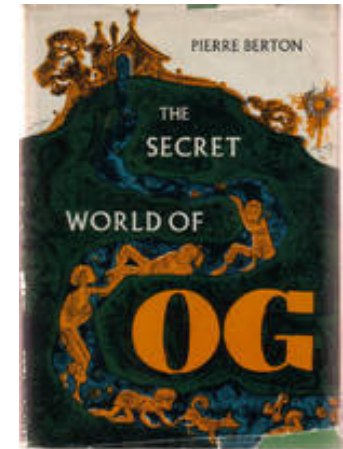
Option One: Pierre Berton - Three Themes



Option One: Pierre Berton - Three Themes

Theme #1: Growing up & Family Life

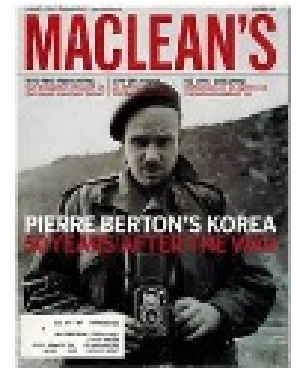
- Chronology of his biography/autobiography
- Family photos
- Quotes about him and his significance by others
- Closely tied to the *Og* book and TV show



Option One: Pierre Berton - Three Themes

Theme #2: Broadcaster and Journalist

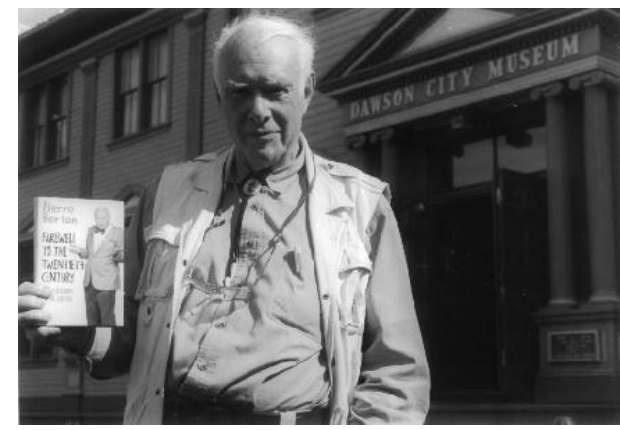
- Mainly AV, some text
- Content is about Pierre Berton on *Front Page Challenge*, *The Pierre Berton Show*, *Maclean's* magazine, as an interviewer & journalist who discussed many (non-Canadian history) topics of the times



Option One: Pierre Berton - Three Themes

Theme #3: Telling the Canadian History Story

- Excerpts from Berton's books & documentaries about Canadian History
- Organized according to the chronology of history (not by date of publication or broadcast)
- Juxtapose Canadian History Timeline

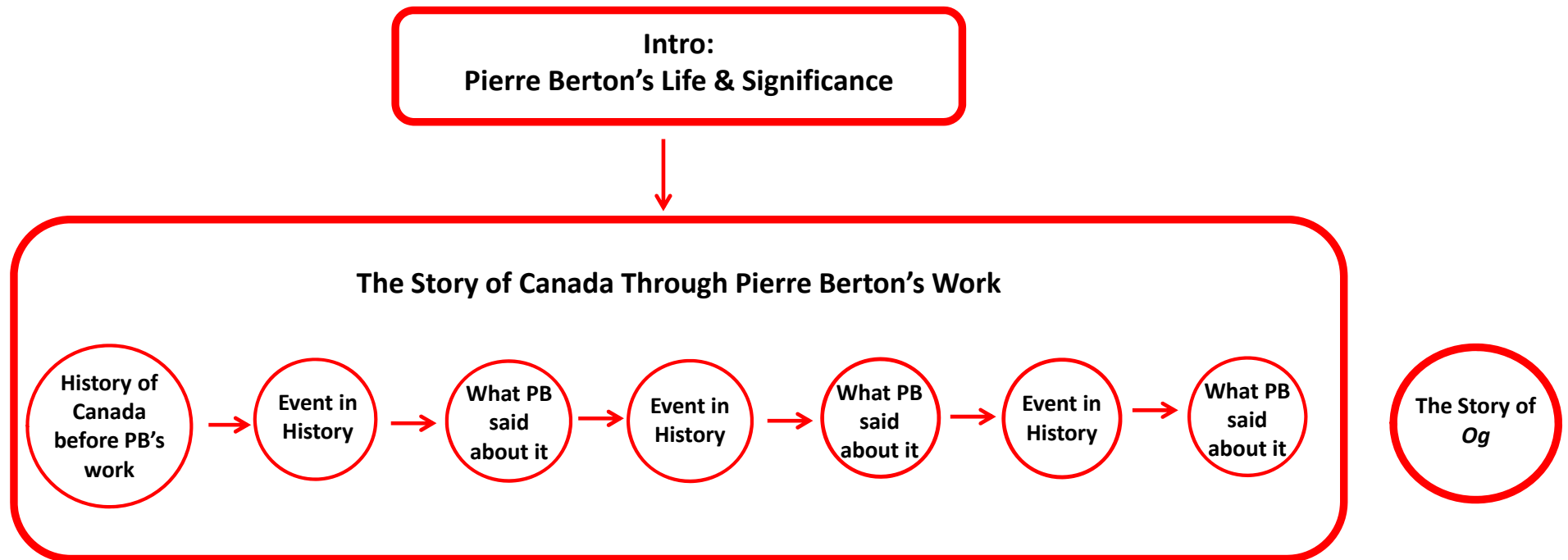


Option One: Pierre Berton - Three Themes

Theme #3: Telling the Canadian History Story (cont'd)



Option Two: Pierre Berton and the Story of Canada



Option Two: Pierre Berton and the Story of Canada

Intro: Pierre Berton's Life & Significance

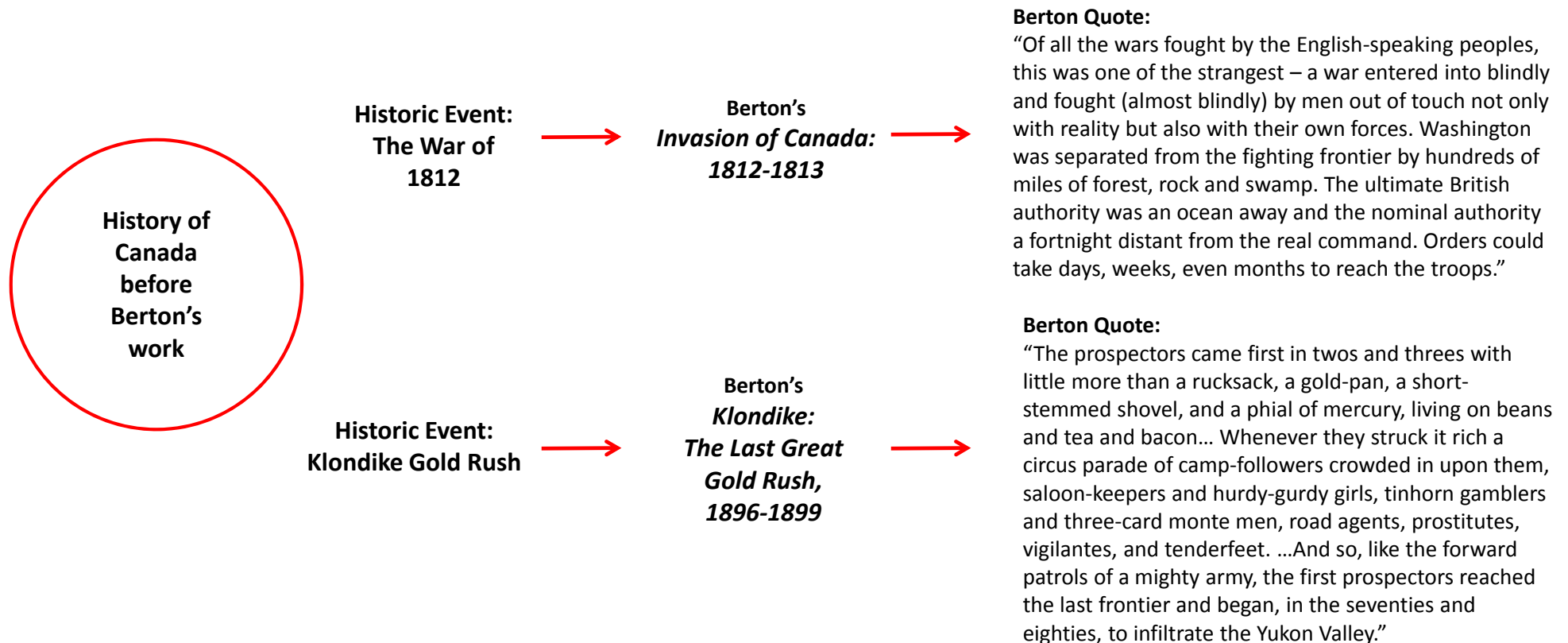
- Testaments to Pierre Berton's importance
- An outline of the main points of his biography
- Officer & Companion of the Order of Canada
- Multiple Literary Awards
- Multiple Broadcasting Awards
- Queen Elizabeth II Silver & Gold Jubilee Medals
- 125th Anniversary of the Confederation of Canada Medal
- Multiple Governor General's Awards x3
- Inductee of several Halls of Fame
- 13 Honourary Degrees
- Awards & Institutions named after him



Option Two: Pierre Berton and the Story of Canada

The Story of Canada Through Pierre Berton's Work

- A time of Canada's history (needs to start at First Nations, although PB did not write about them)
- With each relevant point in history, what PB said in a book or documentary about it



Option Two: Pierre Berton and the Story of Canada

The Story of *The Secret World of Og*

- A stand-alone experience

Original Book Illustrations by Patsy Berton



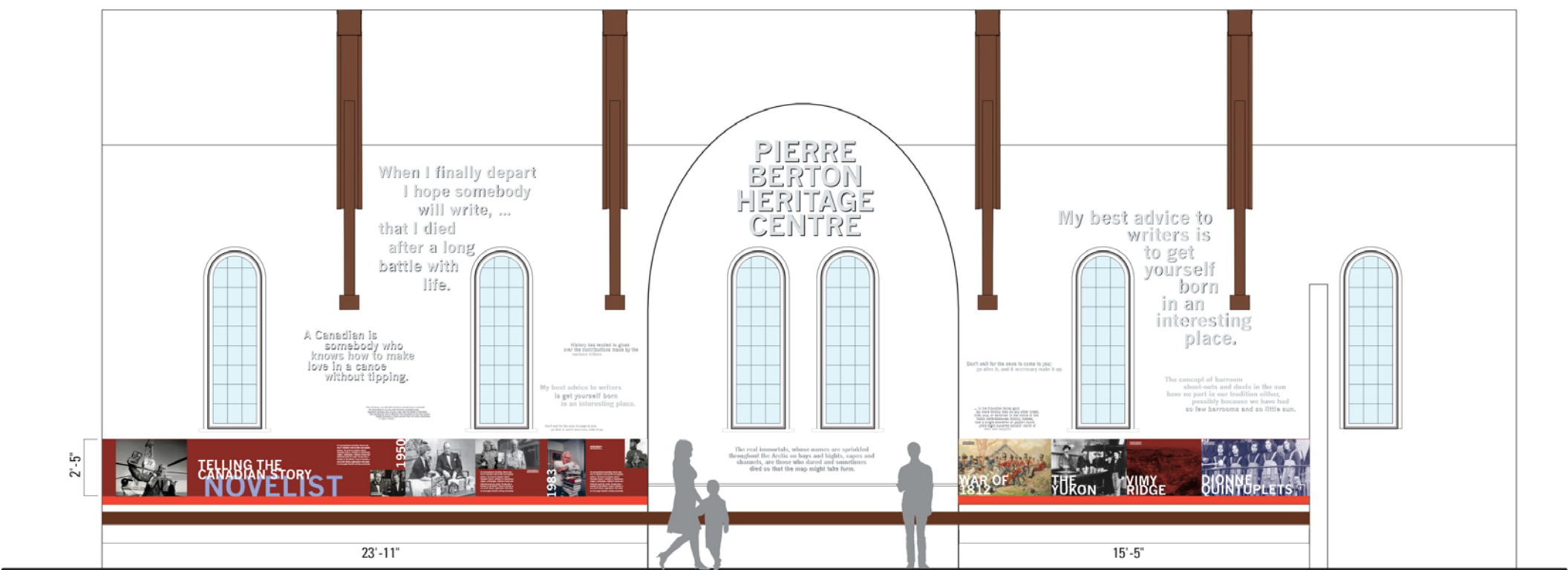
CBC's 1980s television series



Canadian Children's Opera Chorus
live stage production

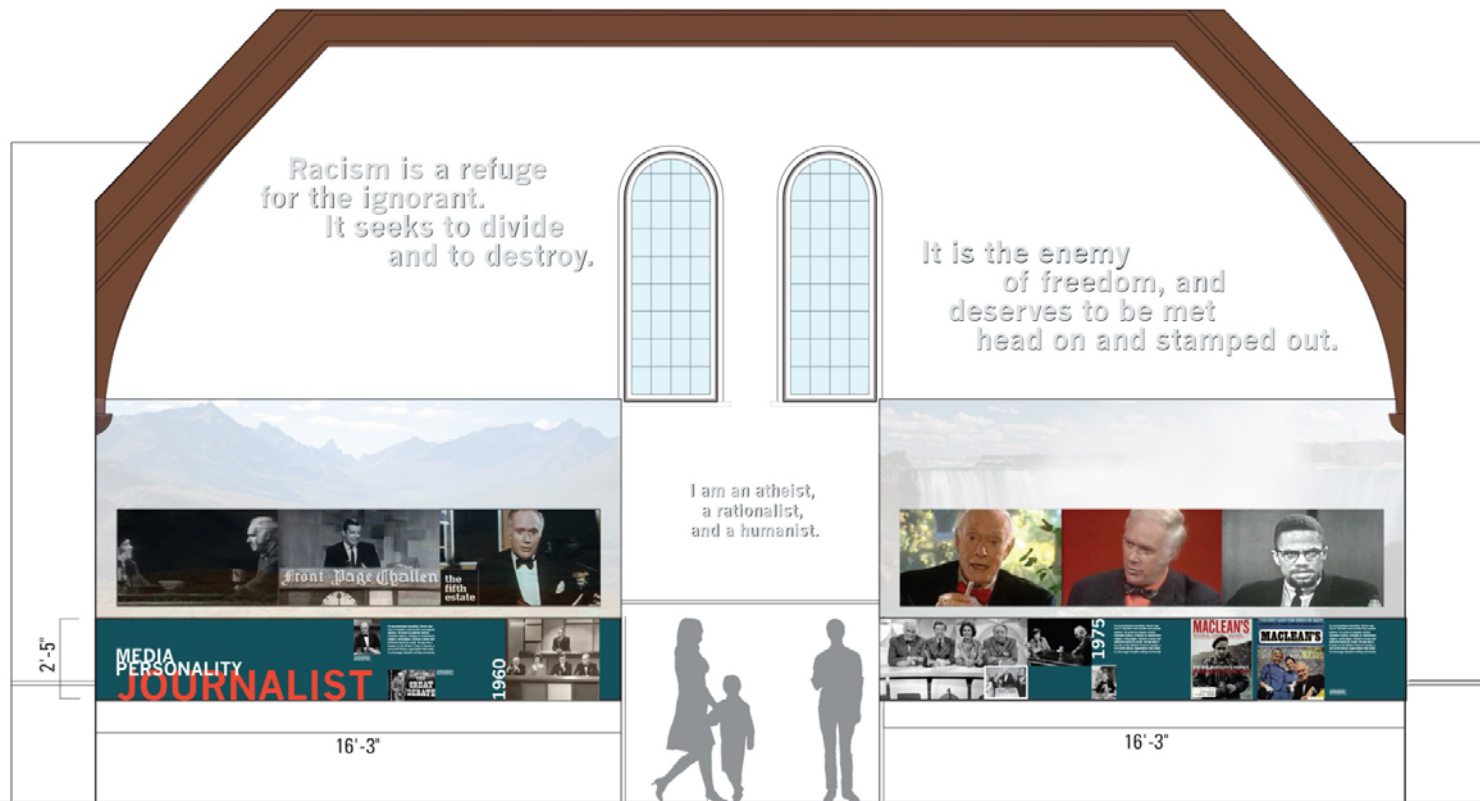


Design Approach: Perimeter Elevations



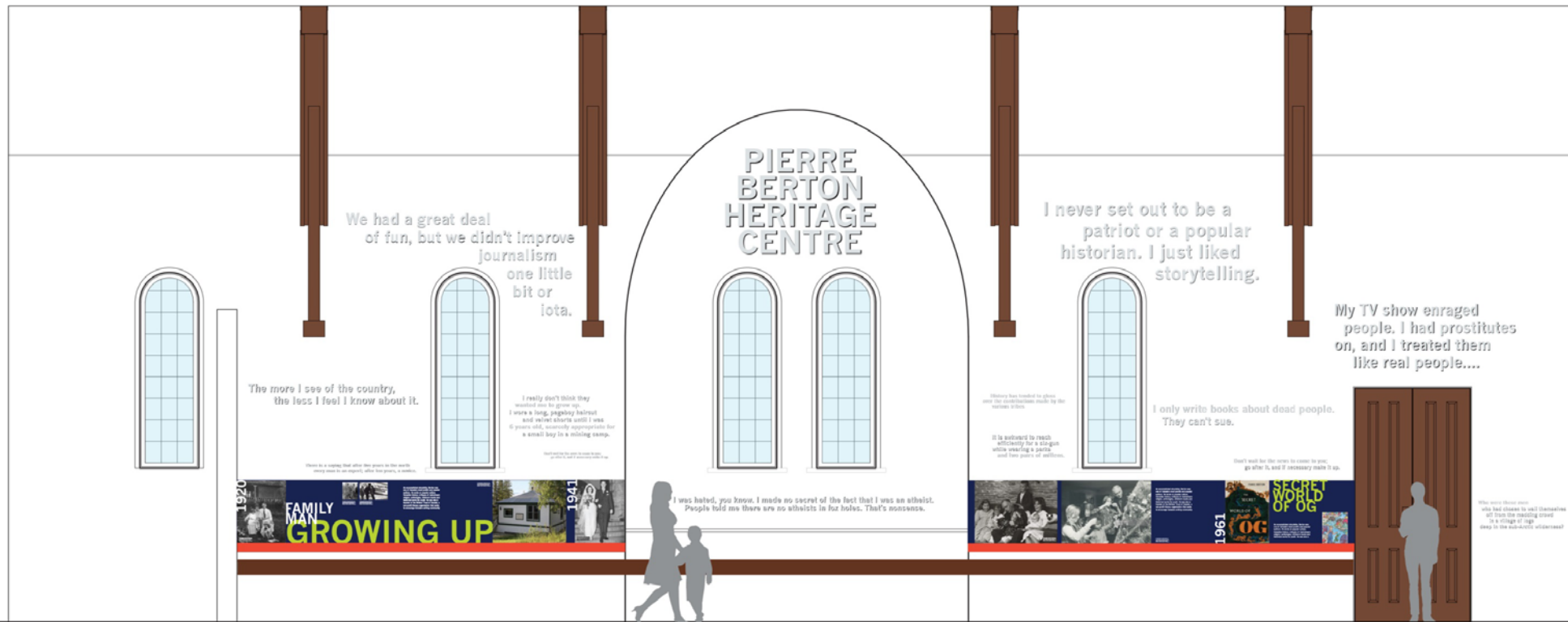
PIERRE BERTON HERITAGE CENTRE
ELEVATION
SCALE: 1:50

Design Approach: Perimeter Elevations



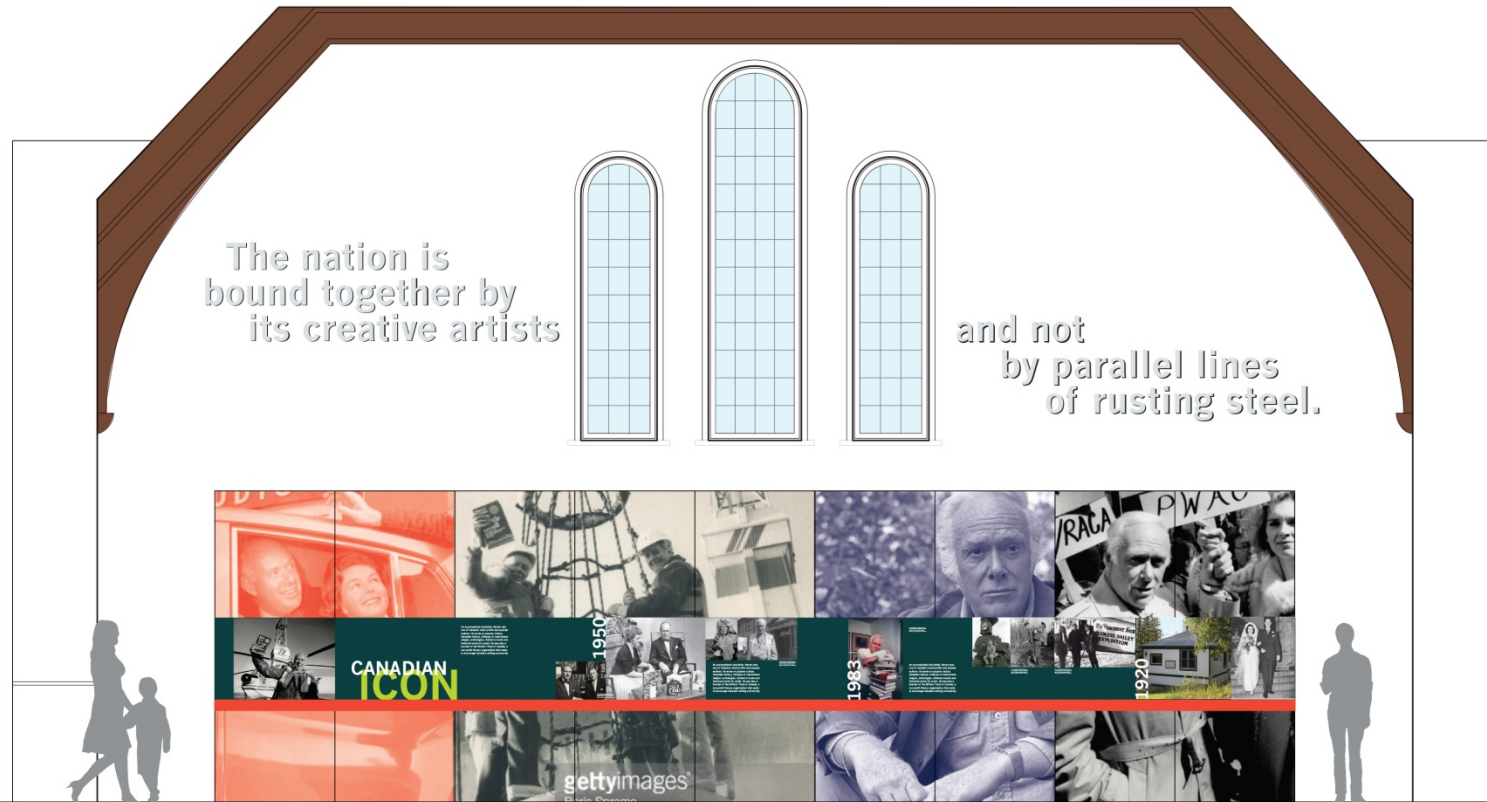
PIERRE BERTON HERITAGE CENTRE
ELEVATION
SCALE: 1:50

Design Approach: Perimeter Elevations



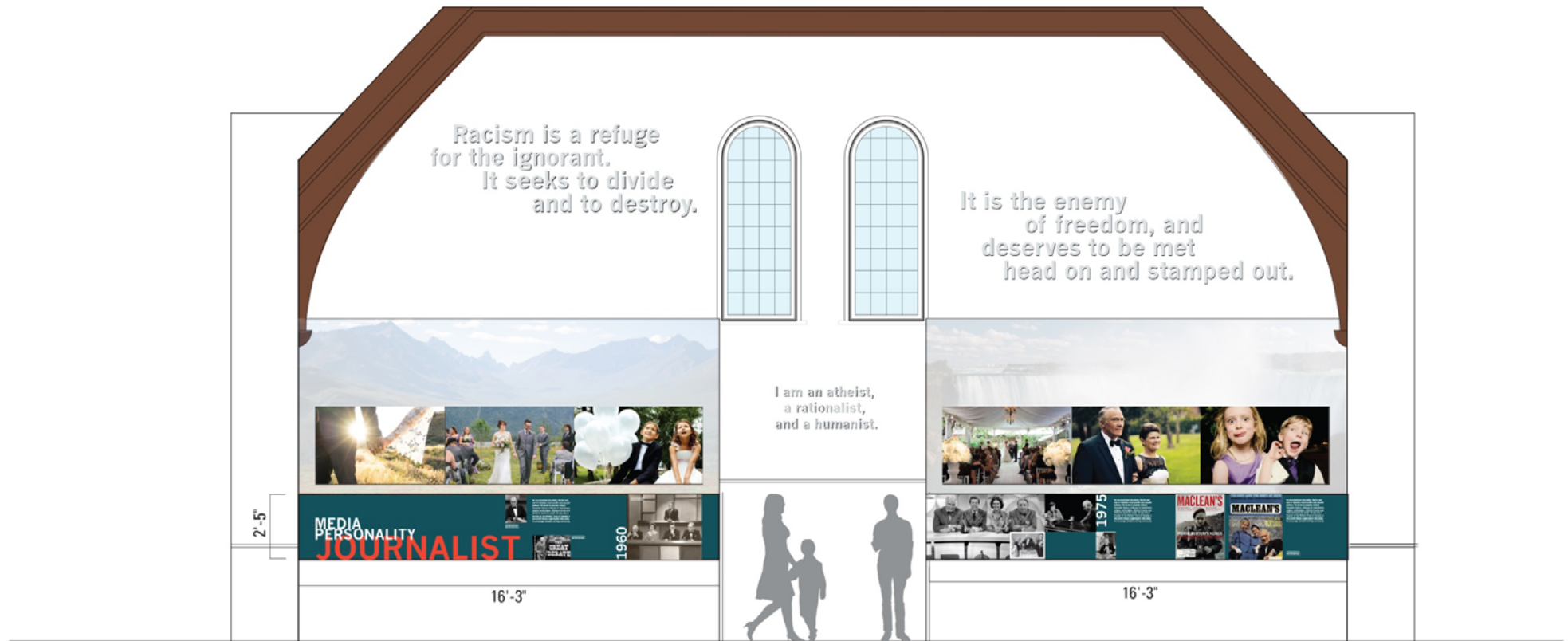
PIERRE BERTON HERITAGE CENTRE
ELEVATION
SCALE: 1:50

Design Approach: Perimeter Elevations



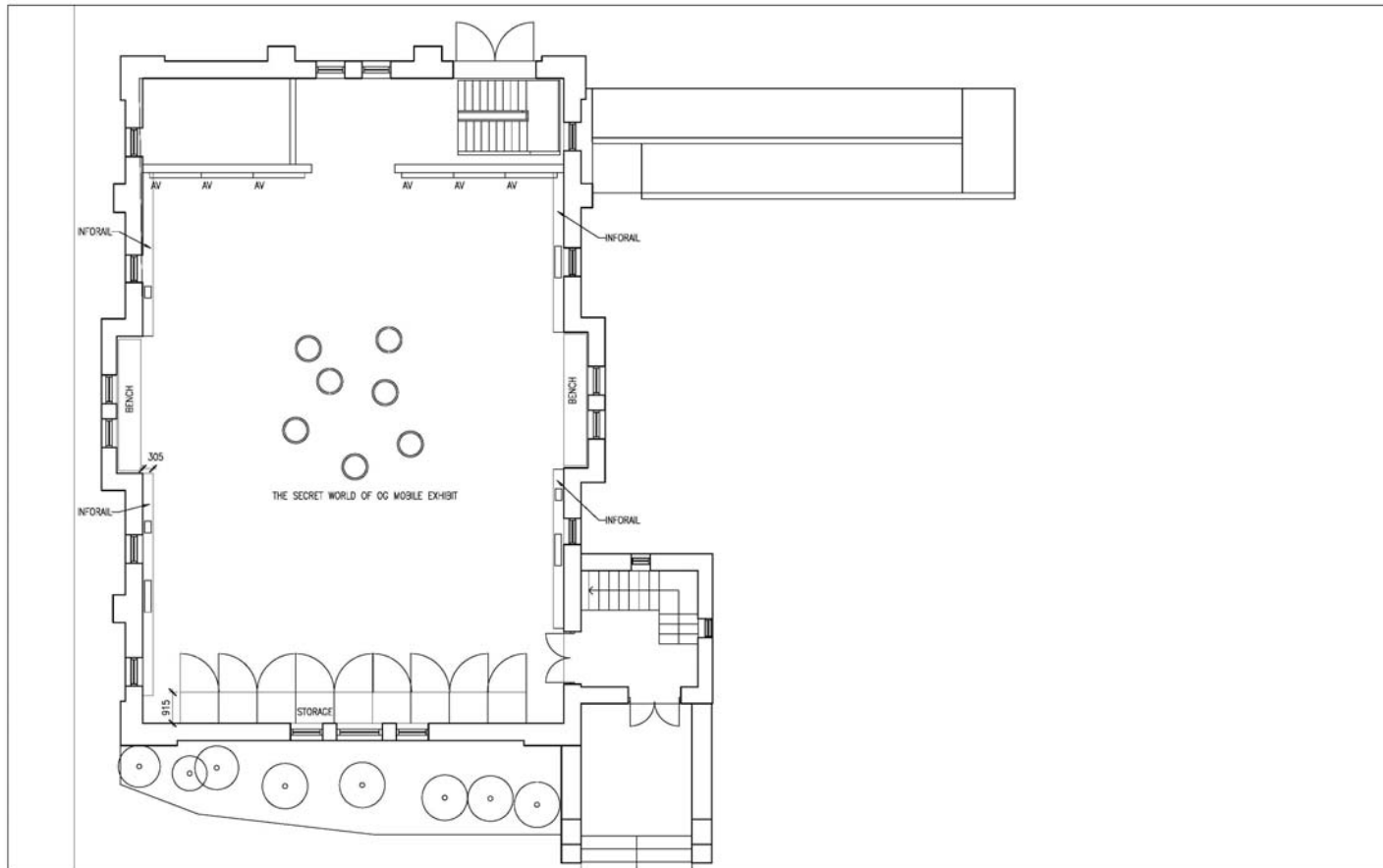
PIERRE BERTON HERITAGE CENTRE
ELEVATION
SCALE: 1:50

Design Approach: Perimeter Elevation - Wedding Mode



PIERRE BERTON HERITAGE CENTRE
ELEVATION
SCALE: 1:50

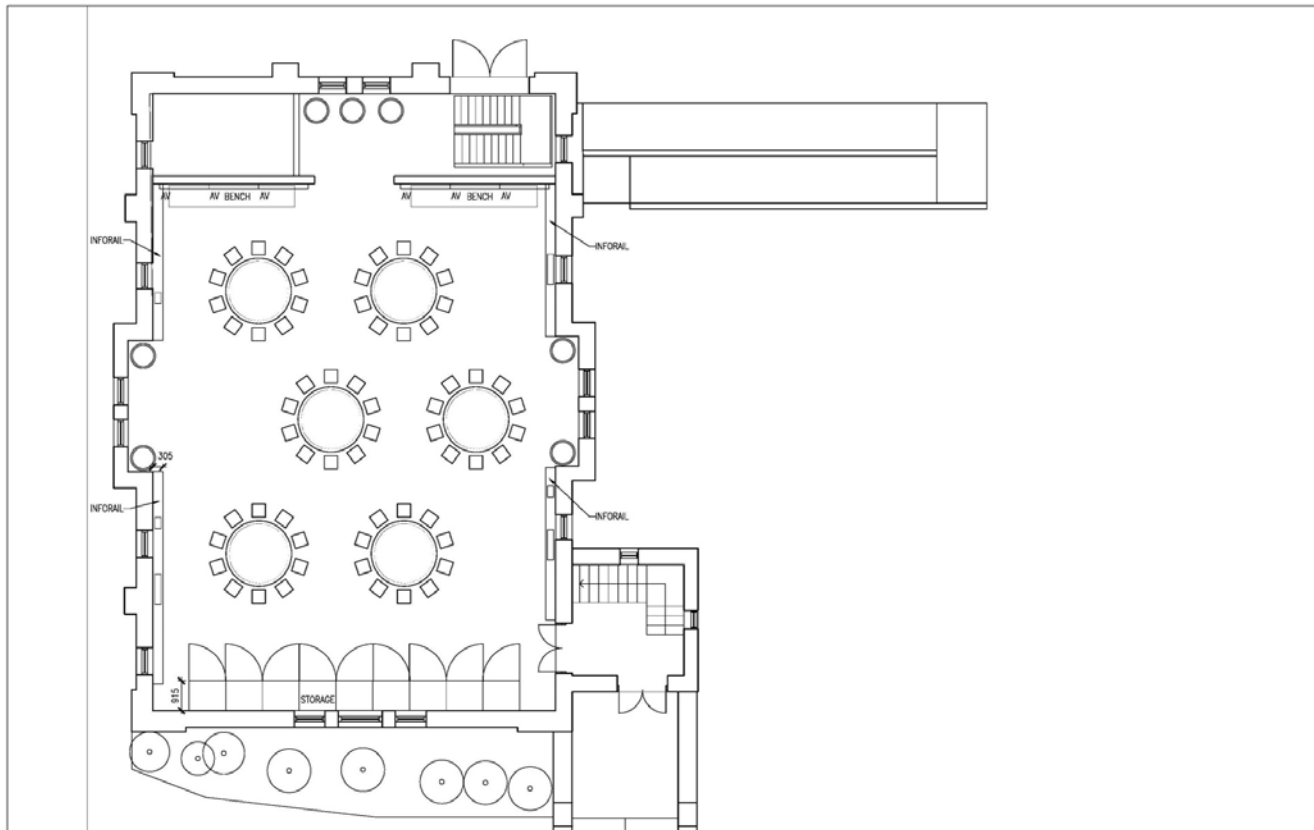
Design Approach: Exhibit Mode Plan



Design Approach: Exhibit Mode Plan - Overhead



Design Approach: Event Mode Plan



Design Approach: Event Mode Plan - Overhead



Design Approach: Exhibit Mode Rendering



Reich+Petch Design International / Christine Lockett Associates

Design Approach: Event Mode Rendering



Reich+Petch Design International / Christine Lockett Associates

Thank You ... *questions ?*

Schedule study

