

**CITY OF VAUGHAN**

**EXTRACT FROM COUNCIL MEETING MINUTES OF OCTOBER 30, 2012**

Item 23, Report No. 39, of the Committee of the Whole, which was adopted without amendment by the Council of the City of Vaughan on October 30, 2012.

**23**

**PARKING PROHIBITION REVIEW  
ST. PADRE PIO GARDENS  
WARD 1**

**The Committee of the Whole recommends approval of the recommendation contained in the following report of the Commissioner of Engineering and Public Works, dated October 16, 2012:**

**Recommendation**

The Commissioner of Engineering and Public Works recommends:

1. That By-law 1-96, the Consolidated Parking By-law, be amended to add a 'No Parking Anytime' prohibition, on the north side of St. Padre Pio Gardens, from Major Mackenzie Drive to Timberwood Drive/Westridge Drive.

**Contribution to Sustainability**

Not Applicable.

**Economic Impact**

The cost associated with the installation of the 'No Parking' signs is estimated to be \$900.00, and has been included in the approved 2012 Operating Budget.

**Communications Plan**

Engineering Services staff will advise the St. Padre Pio Church Administration and area residents of the outcome of Council's decision in this matter.

**Purpose**

To review the feasibility of implementing a 'No Parking Anytime' prohibition on the north side of St. Padre Pio Gardens, from Major Mackenzie Drive to Timberwood Drive/Westridge Drive, in response to a request from the St. Padre Pio Church.

**Background - Analysis and Options**

**St. Padre Pio Church was opened in September 2010**

In September 2010, the St. Padre Pio Church opened. The Church was constructed in conformance with City requirements, with seating capacity for approximately 1,000 patrons, and with on-site parking for 372 vehicles. Of the existing on-site parking, 2 spaces are designated disabled parking, 3 spaces are reserved for the Church clergy, and 2 spaces are being used to accommodate a trash receptacle.

Attendance at regular weekend services can include up to 700 people, resulting in a number of Church patrons parking on both sides of the roadway on St. Padre Pio Gardens. This situation is compounded during the Christmas and Easter seasons, and other large events throughout the year.

The Church has made arrangements for overflow parking for large events at the Sonoma Heights Community Park, located on the south side of Major Mackenzie Drive. The overflow parking

.../2

## **CITY OF VAUGHAN**

### **EXTRACT FROM COUNCIL MEETING MINUTES OF OCTOBER 30, 2012**

#### **Item 23, CW Report No. 39 – Page 2**

arrangement includes a paid duty officer to be retained by St. Padre Pio Church, to ensure the safe passage of pedestrians across Major Mackenzie Drive.

#### **Parking of Vehicles along both sides of St. Padre Pio Gardens poses a safety concern**

Following the recent receipt of complaints, and a request by the Church, City staff reviewed the situation and undertook traffic studies. City staff have confirmed that vehicles parked along both sides of St. Padre Pio Gardens (formerly Old Major Mackenzie Drive) impact both Church patrons and residents in the local community.

The pavement on St. Padre Pio Gardens is 8.5 metres wide. When vehicles are parked on both sides of the roadway, Emergency response to St. Padre Pio Church and the surrounding community, and ingress and egress for Church patrons are negatively impacted, as the portion of the pavement available for vehicles travelling east and west is effectively only one lane wide.

#### **The north side of St. Padre Pio Gardens was selected for the proposed parking prohibition**

In order to improve operations for both Church patrons and residents within this community, a parking prohibition along the north side of St. Padre Pio Gardens is suggested. The north side of the roadway has been selected as there are fire hydrants along this side of the road, which limits the availability of on-street parking already. Accommodating parking only on the south side of St. Padre Pio Gardens will also ensure that Church patrons do not have to cross the road. Lastly, there are no homes with frontage along the north side of St. Padre Pio Gardens, between Major Mackenzie Drive and Timberwood Drive/Westridge Drive.

Based on the curvature in the road alignment, the proposed parking prohibition will also improve sight line visibility for motorists travelling along St. Padre Pio Gardens, north of Major Mackenzie Drive.

#### **Relationship to Vaughan Vision 2020/Strategic Plan**

In consideration of the strategic priorities related to Vaughan 2020, the recommended parking prohibitions will improve traffic flow and pedestrian safety along this roadway, thus enhancing community safety, health and wellness.

#### **Regional Implications**

Not Applicable.

#### **Conclusion**

A 'No Parking Anytime' prohibition is recommended for the north side of St. Padre Pio Gardens, from Major Mackenzie Drive to Timberwood Drive/Westridge Drive.

#### **Attachments**

1. Location Map
2. Parking Prohibition Detail

#### **Report prepared by:**

Lisa Lavery, Manager, Traffic Engineering, Ext. 8143

LL: mm

(A copy of the attachments referred to in the foregoing have been forwarded to each Member of Council and a copy thereof is also on file in the office of the City Clerk.)

## **COMMITTEE OF THE WHOLE – OCTOBER 16, 2012**

### **PARKING PROHIBITION REVIEW ST. PADRE PIO GARDENS WARD 1**

#### **Recommendation**

The Commissioner of Engineering and Public Works recommends:

1. That By-law 1-96, the Consolidated Parking By-law, be amended to add a 'No Parking Anytime' prohibition, on the north side of St. Padre Pio Gardens, from Major Mackenzie Drive to Timberwood Drive/Westridge Drive.

#### **Contribution to Sustainability**

Not Applicable.

#### **Economic Impact**

The cost associated with the installation of the 'No Parking' signs is estimated to be \$900.00, and has been included in the approved 2012 Operating Budget.

#### **Communications Plan**

Engineering Services staff will advise the St. Padre Pio Church Administration and area residents of the outcome of Council's decision in this matter.

#### **Purpose**

To review the feasibility of implementing a 'No Parking Anytime' prohibition on the north side of St. Padre Pio Gardens, from Major Mackenzie Drive to Timberwood Drive/Westridge Drive, in response to a request from the St. Padre Pio Church.

#### **Background - Analysis and Options**

##### **St. Padre Pio Church was opened in September 2010**

In September 2010, the St. Padre Pio Church opened. The Church was constructed in conformance with City requirements, with seating capacity for approximately 1,000 patrons, and with on-site parking for 372 vehicles. Of the existing on-site parking, 2 spaces are designated disabled parking, 3 spaces are reserved for the Church clergy, and 2 spaces are being used to accommodate a trash receptacle.

Attendance at regular weekend services can include up to 700 people, resulting in a number of Church patrons parking on both sides of the roadway on St. Padre Pio Gardens. This situation is compounded during the Christmas and Easter seasons, and other large events throughout the year.

The Church has made arrangements for overflow parking for large events at the Sonoma Heights Community Park, located on the south side of Major Mackenzie Drive. The overflow parking arrangement includes a paid duty officer to be retained by St. Padre Pio Church, to ensure the safe passage of pedestrians across Major Mackenzie Drive.

### **Parking of Vehicles along both sides of St. Padre Pio Gardens poses a safety concern**

Following the recent receipt of complaints, and a request by the Church, City staff reviewed the situation and undertook traffic studies. City staff have confirmed that vehicles parked along both sides of St. Padre Pio Gardens (formerly Old Major Mackenzie Drive) impact both Church patrons and residents in the local community.

The pavement on St. Padre Pio Gardens is 8.5 metres wide. When vehicles are parked on both sides of the roadway, Emergency response to St. Padre Pio Church and the surrounding community, and ingress and egress for Church patrons are negatively impacted, as the portion of the pavement available for vehicles travelling east and west is effectively only one lane wide.

### **The north side of St. Padre Pio Gardens was selected for the proposed parking prohibition**

In order to improve operations for both Church patrons and residents within this community, a parking prohibition along the north side of St. Padre Pio Gardens is suggested. The north side of the roadway has been selected as there are fire hydrants along this side of the road, which limits the availability of on-street parking already. Accommodating parking only on the south side of St. Padre Pio Gardens will also ensure that Church patrons do not have to cross the road. Lastly, there are no homes with frontage along the north side of St. Padre Pio Gardens, between Major Mackenzie Drive and Timberwood Drive/Westridge Drive.

Based on the curvature in the road alignment, the proposed parking prohibition will also improve sight line visibility for motorists travelling along St. Padre Pio Gardens, north of Major Mackenzie Drive.

### **Relationship to Vaughan Vision 2020/Strategic Plan**

In consideration of the strategic priorities related to Vaughan 2020, the recommended parking prohibitions will improve traffic flow and pedestrian safety along this roadway, thus enhancing community safety, health and wellness.

### **Regional Implications**

Not Applicable.

### **Conclusion**

A 'No Parking Anytime' prohibition is recommended for the north side of St. Padre Pio Gardens, from Major Mackenzie Drive to Timberwood Drive/Westridge Drive.

**Attachments**

1. Location Map
2. Parking Prohibition Detail

**Report prepared by:**

Lisa Lavery, Manager, Traffic Engineering, Ext. 8143

Respectfully submitted,

Paul Jankowski, P. Eng.  
Commissioner of Engineering and Public Works

Jack Graziosi, P. Eng.  
Director of Engineering Services

LL: mm

# ATTACHMENT No. 1



## LOCATION MAP PARKING PROHIBITION ST. PADRE PIO GARDENS

### LEGEND



EXISTING TRAFFIC SIGNAL



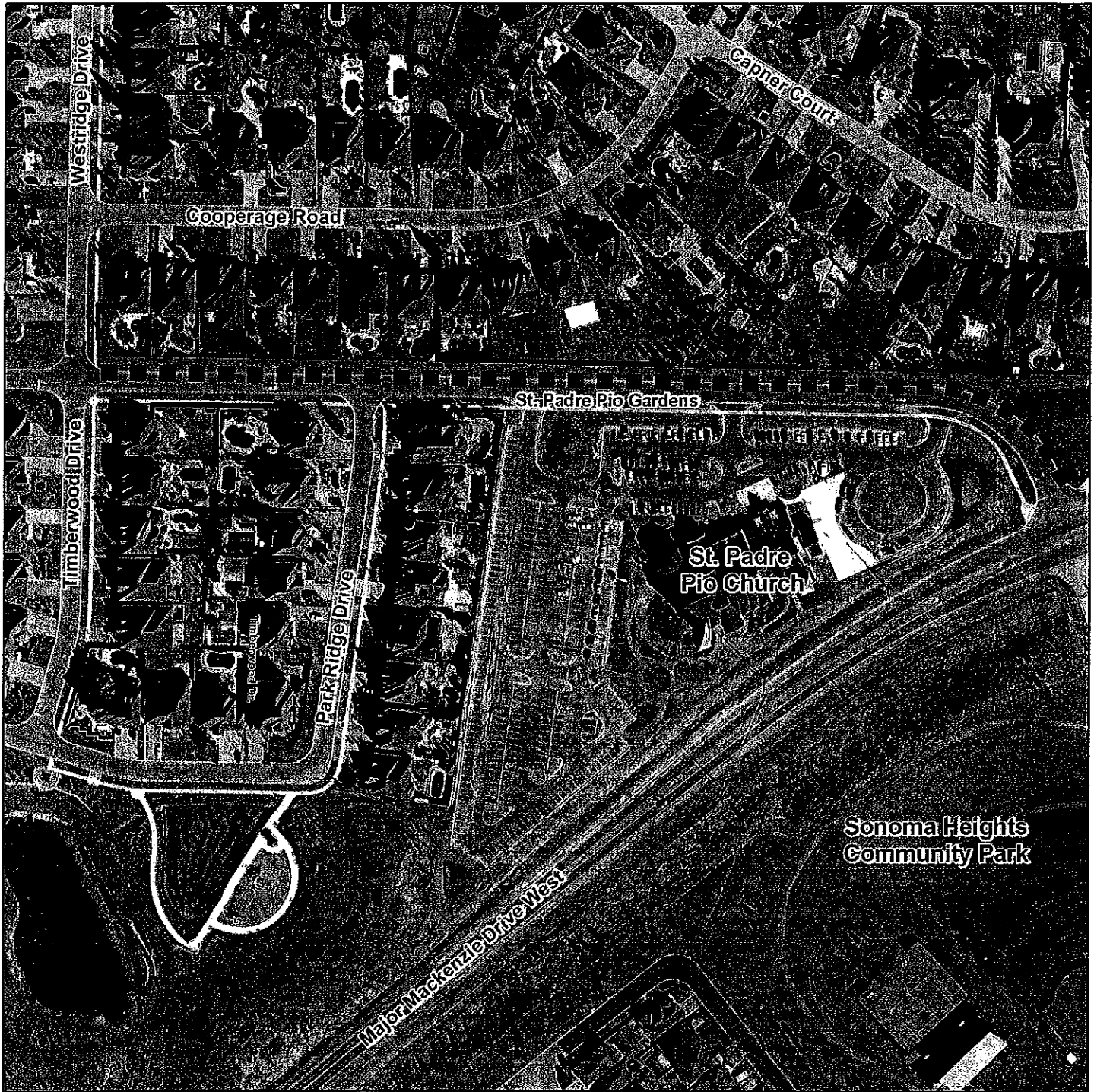
EXISTING ALL-WAY STOP

Note: Aerial Photography Taken in Spring, 2011



NOT TO SCALE

# ATTACHMENT No. 2



## PARKING PROHIBITION DETAIL ST. PADRE PIO GARDENS

### LEGEND

■ ■ ■ ■ PROPOSED PARKING PROHIBITION

Note: Aerial Photography Taken in Spring, 2011



NOT TO SCALE

F:\Common\ENG\ATTACHMENTS\TRAFFIC\ATTACHMENTS\Parking\_Prohibition\_Padre\_Pio