

CITY OF VAUGHAN

EXTRACT FROM COUNCIL MEETING MINUTES OF DECEMBER 13, 2016

Item 7, Report No. 43, of the Committee of the Whole, which was adopted without amendment by the Council of the City of Vaughan on December 13, 2016.

7

**ALL-WAY STOP CONTROL REVIEW
LAUDERDALE DRIVE AND CORAL ACRES DRIVE (SOUTH)
WARD 4**

The Committee of the Whole recommends approval of the recommendation contained in the following report of the City Manager and the Director of Transportation Services, Parks and Forestry Operations, dated December 6, 2016:

Recommendation

The City Manager and the Director of Transportation Services, Parks and Forestry Operations recommend:

1. That a By-law be enacted to amend By-law 284-94, the Consolidated Traffic By-law, to add an all-way stop control at the intersection of Lauderdale Drive and Coral Acres Drive (South).

Contribution to Sustainability

This report contributes to the goals and objectives within Green Directions Vaughan, The City's Community Sustainability and Environmental Master Plan, specifically:

Goal 3: To ensure that Vaughan is a city that is easy to get around with a low environmental impact.

Objective 3.2: To develop and sustain a network of roads that supports efficient and accessible public and private transit.

Economic Impact

The capital costs associated with the installation of the all-way stop signs is estimated to be \$500.00, and has been included in the approved 2016 Operating Budget. The on-going costs to maintain the signs and pavement markings (stop bars), is estimated to be \$150.00 per annum, and will be incorporated in future year Operating Budgets.

Communications Plan

Staff will advise the area residents of the outcome of Council's decision in this matter.

Purpose

To review the feasibility of implementing an all-way stop control at the intersection of Lauderdale Drive and Coral Acres Drive (south).

Background - Analysis and Options

A review of traffic operations at the intersection of Lauderdale Drive and Coral Acres Drive (south) was conducted to determine if an all-way stop meets industry warrants.

Staff have been monitoring this intersection since 2012 and several turning movement counts have been conducted at the intersection of Lauderdale Drive and Coral Acres Drive (south intersection) from 2012 to 2016. A review of traffic activity was conducted at the intersection of

CITY OF VAUGHAN

EXTRACT FROM COUNCIL MEETING MINUTES OF DECEMBER 13, 2016

Item 7, CW Report No. 43 – Page 2

Lauderdale Drive and Coral Acres Drive (south) to determine the feasibility of implementing an all-way stop control on September 27, 2016.

Lauderdale Drive and Coral Acres Drive (south) are two-lane local roadways with a 17.5 metre right-of-way and an 8.0 metre pavement width. The statutory speed limit on both roadways is 50 km/h.

The intersection of Lauderdale Drive and Coral Drive (south) is a four-leg intersection with existing stop controls on Coral Acres Drive. This intersection is in close proximity to three elementary schools below:

1. St. Cecilia Catholic Elementary School, located at the south-west corner of Peter Rupert Avenue and Golden Forest Road.
2. Romeo Dallaire Public School, located at the south-west corner of Peter Rupert Avenue and Petticoat Road.
3. Dr. Roberta Bondar Public School, located at the north-east corner of the Grand Trunk Avenue and Sir Sanford Fleming Way.

A map of the area is shown in Attachment No.1.

An All-way Stop Control is recommended at the intersection of Lauderdale Drive and Coral Acres Drive (south), as it is anticipated that future growth in the community and increase of school traffic will meet minimum threshold for the Provincial Warrant within the next three to six months.

Turning movement counts were conducted on six separate dates from 2012 to 2016 at the intersection of Lauderdale Drive and Coral Acres Drive (south). The study was conducted during the peak traffic periods of 7:00 a.m. to 9:00 a.m., and 3:00 p.m. to 6:00 p.m. The collision records and sightlines at the approaches to the intersection were also assessed. The data collected was compared to the Provincial Warrant for All-way Stop Controls, with the following results:

	2012	2013	2014	2015	March 2016	Sept 2016
Warrant 1 – Minimum Vehicular Volumes	61%	59%	79%	85%	88%	94%
Warrant 2 – Accident Hazard	0%	0%	0%	25%	50%	50%
Warrant 3 – Sight Restriction	0%	0%	0%	0%	0%	0%

All-way stop controls are recommended when one of the above warrants are satisfied to 100 percent or more. As shown above, the existing Minimum Vehicular Volumes, the Accident Hazard, and the Sight Restriction are not satisfied at this intersection.

Existing traffic volumes fulfill 94% of the required 100% on the warrant. The traffic data collected shows a steady growth in peak hour traffic from 2014 to 2016. With close proximity to St. Cecilia Catholic Elementary School, Romeo Dallaire Public School that opened in September 2015, and the anticipated planned development in the area, it is anticipated that the additional vehicles required to fulfill the warrant could be met at any time. Therefore, it would be beneficial to install the all-way stop control at this time.

Relationship to Term of Council Service Excellence Strategy Map (2014-2018)

In consideration with the strategic priorities related to the Term of Council Service Excellence Strategy Map (2014 – 2018), the recommended all-way stop will improve traffic flow for both drivers and pedestrians at the intersection, thus improving the municipal network, and promoting community safety, health and wellness.

CITY OF VAUGHAN

EXTRACT FROM COUNCIL MEETING MINUTES OF DECEMBER 13, 2016

Item 7, CW Report No. 43 – Page 3

Regional Implications

Not Applicable.

Conclusion

The implementation of an all-way stop control at this location would benefit both vehicular and pedestrian movements in the area. With close proximity of the three Elementary Schools, and the anticipated planned development in the area, it is recommended that an all-way stop control be implemented at the intersection of Lauderdale Drive and Coral Acres Drive (south).

Attachment

1. Location Map

Report prepared by:

Peter Trinh, Traffic Analyst, Ext. 6157

Margie Chung, Manager Traffic Engineering, Ext. 6173

(A copy of the attachments referred to in the foregoing have been forwarded to each Member of Council and a copy thereof is also on file in the office of the City Clerk.)

**ALL-WAY STOP CONTROL REVIEW
LAUDERDALE DRIVE AND CORAL ACRES DRIVE (SOUTH)
WARD 4**

Recommendation

The City Manager and the Director of Transportation Services, Parks and Forestry Operations recommend:

1. That a By-law be enacted to amend By-law 284-94, the Consolidated Traffic By-law, to add an all-way stop control at the intersection of Lauderdale Drive and Coral Acres Drive (South).

Contribution to Sustainability

This report contributes to the goals and objectives within Green Directions Vaughan, The City's Community Sustainability and Environmental Master Plan, specifically:

Goal 3: To ensure that Vaughan is a city that is easy to get around with a low environmental impact.

Objective 3.2: To develop and sustain a network of roads that supports efficient and accessible public and private transit.

Economic Impact

The capital costs associated with the installation of the all-way stop signs is estimated to be \$500.00, and has been included in the approved 2016 Operating Budget. The on-going costs to maintain the signs and pavement markings (stop bars), is estimated to be \$150.00 per annum, and will be incorporated in future year Operating Budgets.

Communications Plan

Staff will advise the area residents of the outcome of Council's decision in this matter.

Purpose

To review the feasibility of implementing an all-way stop control at the intersection of Lauderdale Drive and Coral Acres Drive (south).

Background - Analysis and Options

A review of traffic operations at the intersection of Lauderdale Drive and Coral Acres Drive (south) was conducted to determine if an all-way stop meets industry warrants.

Staff have been monitoring this intersection since 2012 and several turning movement counts have been conducted at the intersection of Lauderdale Drive and Coral Acres Drive (south intersection) from 2012 to 2016. A review of traffic activity was conducted at the intersection of Lauderdale Drive and Coral Acres Drive (south) to determine the feasibility of implementing an all-way stop control on September 27, 2016.

Lauderdale Drive and Coral Acres Drive (south) are two-lane local roadways with a 17.5 metre right-of-way and an 8.0 metre pavement width. The statutory speed limit on both roadways is 50 km/h.

The intersection of Lauderdale Drive and Coral Drive (south) is a four-leg intersection with existing stop controls on Coral Acres Drive. This intersection is in close proximity to three elementary schools below:

1. St. Cecilia Catholic Elementary School, located at the south-west corner of Peter Rupert Avenue and Golden Forest Road.
2. Romeo Dallaire Public School, located at the south-west corner of Peter Rupert Avenue and Petticoat Road.
3. Dr. Roberta Bondar Public School, located at the north-east corner of the Grand Trunk Avenue and Sir Sanford Fleming Way.

A map of the area is shown in Attachment No.1.

An All-way Stop Control is recommended at the intersection of Lauderdale Drive and Coral Acres Drive (south), as it is anticipated that future growth in the community and increase of school traffic will meet minimum threshold for the Provincial Warrant within the next three to six months.

Turning movement counts were conducted on six separate dates from 2012 to 2016 at the intersection of Lauderdale Drive and Coral Acres Drive (south). The study was conducted during the peak traffic periods of 7:00 a.m. to 9:00 a.m., and 3:00 p.m. to 6:00 p.m. The collision records and sightlines at the approaches to the intersection were also assessed. The data collected was compared to the Provincial Warrant for All-way Stop Controls, with the following results:

	2012	2013	2014	2015	March 2016	Sept 2016
Warrant 1 – Minimum Vehicular Volumes	61%	59%	79%	85%	88%	94%
Warrant 2 – Accident Hazard	0%	0%	0%	25%	50%	50%
Warrant 3 – Sight Restriction	0%	0%	0%	0%	0%	0%

All-way stop controls are recommended when one of the above warrants are satisfied to 100 percent or more. As shown above, the existing Minimum Vehicular Volumes, the Accident Hazard, and the Sight Restriction are not satisfied at this intersection.

Existing traffic volumes fulfill 94% of the required 100% on the warrant. The traffic data collected shows a steady growth in peak hour traffic from 2014 to 2016. With close proximity to St. Cecilia Catholic Elementary School, Romeo Dallaire Public School that opened in September 2015, and the anticipated planned development in the area, it is anticipated that the additional vehicles required to fulfill the warrant could be met at any time. Therefore, it would be beneficial to install the all-way stop control at this time.

Relationship to Term of Council Service Excellence Strategy Map (2014-2018)

In consideration with the strategic priorities related to the Term of Council Service Excellence Strategy Map (2014 – 2018), the recommended all-way stop will improve traffic flow for both drivers and pedestrians at the intersection, thus improving the municipal network, and promoting community safety, health and wellness.

Regional Implications

Not Applicable.

Conclusion

The implementation of an all-way stop control at this location would benefit both vehicular and pedestrian movements in the area. With close proximity of the three Elementary Schools, and the anticipated planned development in the area, it is recommended that an all-way stop control be implemented at the intersection of Lauderdale Drive and Coral Acres Drive (south).

Attachment

1. Location Map

Report prepared by:

Peter Trinh, Traffic Analyst, Ext. 6157

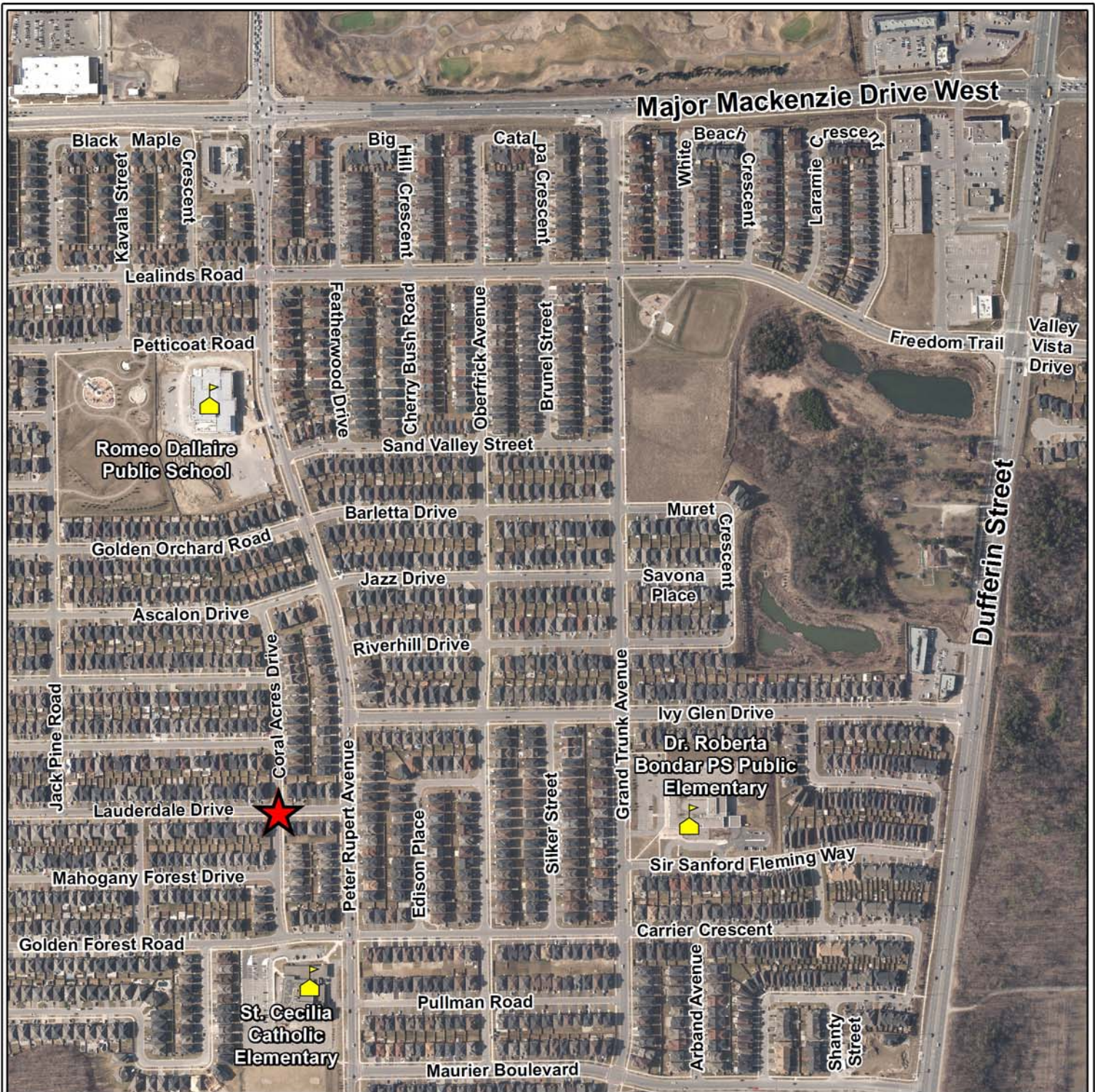
Margie Chung, Manager Traffic Engineering, Ext. 6173

Respectfully submitted,

Daniel Kostopoulos
City Manager

Zoran Postic
Director of Transportation Services,
Parks & Forestry Department

ATTACHMENT No.1



LOCATION MAP
ALL-WAY STOP CONTROL REVIEW
LAUDERDALE DRIVE AND CORAL ACRES DRIVE (SOUTH)
WARD 4

LEGEND



PROPOSED ALL-WAY STOP



SCHOOL

Note: Aerial photography acquired Spring, 2015



NOT TO SCALE

THE CITY OF VAUGHAN

BY-LAW

BY-LAW NUMBER 178-2016

A By-law to amend the Consolidated Traffic By-law 284-94, as amended, to govern and control traffic in the City of Vaughan.

The Council of The Corporation of the City of Vaughan ENACTS AS FOLLOWS:

1. THAT City of Vaughan By-law 284-94 as amended, be and is hereby further amended by adding the following provision to Schedule "B", Part 2:

INTERSECTION

Lauderdale Drive (south) at
Coral Acres Drive

STOP STREETS

Lauderdale Drive (south) west of Coral Acres Drive
Lauderdale Drive (south) east of Coral Acres Drive
Coral Acres Drive north of Lauderdale Drive (south)
Coral Acres Drive south of Lauderdale Drive (south)

Enacted by City of Vaughan Council this 13th day of December, 2016.

Hon. Maurizio Bevilacqua, Mayor

Jeffrey A. Abrams, City Clerk