

CITY OF VAUGHAN

EXTRACT FROM COUNCIL MEETING MINUTES OF DECEMBER 10, 2013

Item 6, Report No. 52, of the Committee of the Whole, which was adopted without amendment by the Council of the City of Vaughan on December 10, 2013.

6

**ALL-WAY STOP CONTROL REVIEW
VELLORE PARK AVENUE AND LORMEL GATE
WARD 3**

The Committee of the Whole recommends approval of the recommendation contained in the following report of the Commissioner of Engineering and Public Works and the Director of Engineering Services, dated November 26, 2013:

Recommendation

The Commissioner of Engineering and Public Works and the Director of Engineering Services recommends:

1. That Council enact a By-law to install an all-way stop control at the intersection of Vellore Park Avenue and Lormel Gate.

Contribution to Sustainability

Not Applicable.

Economic Impact

The capital costs associated with the installation of the all-way stop signs is estimated to be \$500.00, and has been included in the approved 2013 Operating Budget. The on-going costs to maintain the signs and pavement markings (stop bars), is estimated to be \$150.00 per annum, and will be incorporated in future year Operating Budgets.

Communications Plan

Staff will advise area residents and businesses of the outcome of Council's decision in this matter.

Purpose

To review the feasibility of implementing an all-way stop control at the intersection of Vellore Park Avenue and Lormel Gate.

Background - Analysis and Options

Staff carried out a review of the traffic activity at the intersection of Vellore Park Avenue and Lormel Gate.

Vellore Park Avenue and Lormel Gate are both minor collector roadways with a 23.0 metre right-of-way and an 11.5 metre pavement width. The intersection of Vellore Park Avenue and Lormel Gate is a four-leg intersection with the existing stop controls on Lormel Gate. The area is shown in Attachment No.1.

Staff conducted a turning movement count on October 16, 2013 at this intersection. The study was conducted during the peak traffic periods of 7:00 a.m. to 9:00 a.m. and 3:00 p.m. to 6:00 p.m. Staff also reviewed the accident records for 2012 and sight lines at the approaches to the intersection. The data collected was compared to the Provincial Warrant for All-way Stop Control with the following results:

CITY OF VAUGHAN

EXTRACT FROM COUNCIL MEETING MINUTES OF DECEMBER 10, 2013

Item 6, CW Report No. 52 – Page 2

•Warrant 1 – Minimum Vehicular Volumes	Warranted	107%
•Warrant 2 – Accident Hazard	Warranted	0%
•Warrant 3 – Sight Restriction	Warranted	0%

All-way stop controls are recommended when one of the above warrants are satisfied to 100% or more. As shown above, existing traffic volumes exceed Warrant #1 requirements. There were zero recorded vehicle collisions at this intersection in the year 2012. To date, this is the latest collision data available from York Regional Police. There are no sight restrictions at this intersection. As the information above indicates, this intersection meets the minimum requirements of the Provincial Warrant for All-way Stop Control.

The proposed all-way stop would also benefit both vehicular and pedestrian movements in the area.

Relationship to Vaughan Vision 2020/Strategic Plan

In consideration of the strategic priorities related to Vaughan Vision 2020, the recommended all-way stop will improve traffic flow for both drivers and pedestrians at the intersection, thus promoting community safety, health and wellness.

Regional Implications

Not Applicable.

Conclusion

It is recommended that an all-way stop control be installed at the intersection of Vellore Park Avenue and Lormel Gate as the minimum requirement of the Provincial Warrant for All-way Stop Control is met.

Attachments

1. Location Map

Report prepared by:

Mark Ranstoller, Senior Traffic Technologist, Ext. 8726
Vince Musacchio, Manager of Capital Planning & Infrastructure, Ext. 8311

(A copy of the attachments referred to in the foregoing have been forwarded to each Member of Council and a copy thereof is also on file in the office of the City Clerk.)

COMMITTEE OF THE WHOLE – NOVEMBER 26, 2013

ALL-WAY STOP CONTROL REVIEW VELLORE PARK AVENUE AND LORMEL GATE WARD 3

Recommendation

The Commissioner of Engineering and Public Works and the Director of Engineering Services recommends:

1. That Council enact a By-law to install an all-way stop control at the intersection of Vellore Park Avenue and Lormel Gate.

Contribution to Sustainability

Not Applicable.

Economic Impact

The capital costs associated with the installation of the all-way stop signs is estimated to be \$500.00, and has been included in the approved 2013 Operating Budget. The on-going costs to maintain the signs and pavement markings (stop bars), is estimated to be \$150.00 per annum, and will be incorporated in future year Operating Budgets.

Communications Plan

Staff will advise area residents and businesses of the outcome of Council's decision in this matter.

Purpose

To review the feasibility of implementing an all-way stop control at the intersection of Vellore Park Avenue and Lormel Gate.

Background - Analysis and Options

Staff carried out a review of the traffic activity at the intersection of Vellore Park Avenue and Lormel Gate.

Vellore Park Avenue and Lormel Gate are both minor collector roadways with a 23.0 metre right-of-way and an 11.5 metre pavement width. The intersection of Vellore Park Avenue and Lormel Gate is a four-leg intersection with the existing stop controls on Lormel Gate. The area is shown in Attachment No.1.

Staff conducted a turning movement count on October 16, 2013 at this intersection. The study was conducted during the peak traffic periods of 7:00 a.m. to 9:00 a.m. and 3:00 p.m. to 6:00 p.m. Staff also reviewed the accident records for 2012 and sight lines at the approaches to the intersection. The data collected was compared to the Provincial Warrant for All-way Stop Control with the following results:

• Warrant 1 – Minimum Vehicular Volumes	Warranted	107%
• Warrant 2 – Accident Hazard	Warranted	0%
• Warrant 3 – Sight Restriction	Warranted	0%

All-way stop controls are recommended when one of the above warrants are satisfied to 100% or more. As shown above, existing traffic volumes exceed Warrant #1 requirements. There were zero recorded vehicle collisions at this intersection in the year 2012. To date, this is the latest collision data available from York Regional Police. There are no sight restrictions at this intersection. As the information above indicates, this intersection meets the minimum requirements of the Provincial Warrant for All-way Stop Control.

The proposed all-way stop would also benefit both vehicular and pedestrian movements in the area.

Relationship to Vaughan Vision 2020/Strategic Plan

In consideration of the strategic priorities related to Vaughan Vision 2020, the recommended all-way stop will improve traffic flow for both drivers and pedestrians at the intersection, thus promoting community safety, health and wellness.

Regional Implications

Not Applicable.

Conclusion

It is recommended that an all-way stop control be installed at the intersection of Vellore Park Avenue and Lormel Gate as the minimum requirement of the Provincial Warrant for All-way Stop Control is met.

Attachments

1. Location Map

Report prepared by:

Mark Ranstoller, Senior Traffic Technologist, Ext. 8726
Vince Musacchio, Manager of Capital Planning & Infrastructure, Ext. 8311

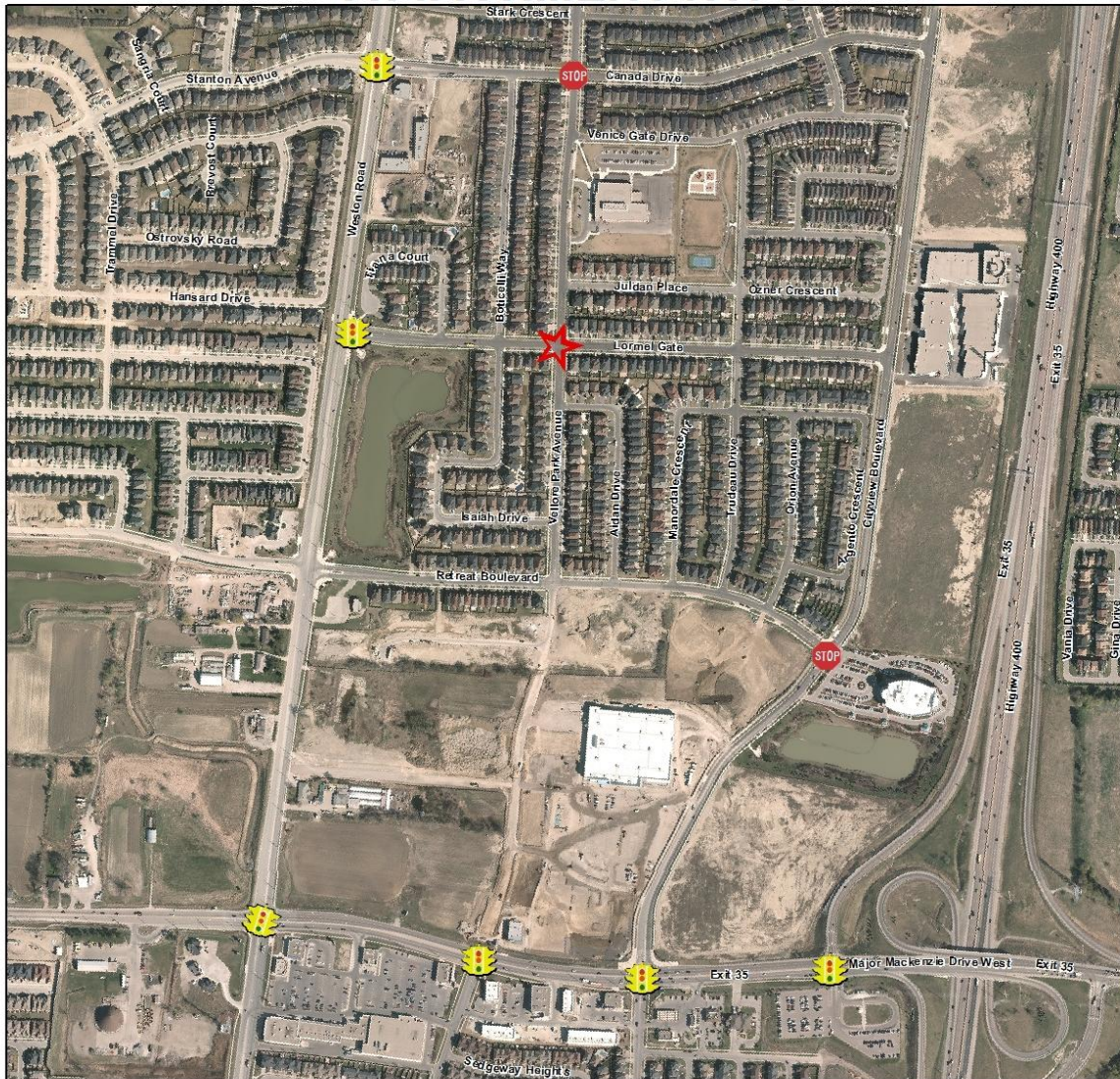
Respectfully submitted,

Paul Jankowski
Commissioner of Engineering and Public Works

Jack Graziosi
Director of Engineering Services




MR:mm

ATTACHMENT No. 1



ALL-WAY STOP CONTROL REVIEW VELLORE PARK AVENUE AND LORMEL GATE

LEGEND

-  INTERSECTION UNDER REVIEW
 -  EXISTING TRAFFIC SIGNAL
 -  EXISTING ALL-WAY STOP CONTROL
- Note: Aerial Photography Taken in Spring, 2012

