

CITY OF VAUGHAN

EXTRACT FROM COUNCIL MEETING MINUTES OF SEPTEMBER 16, 2015

Item 5, Report No. 31, of the Committee of the Whole, which was adopted without amendment by the Council of the City of Vaughan on September 16, 2015.

5 **'NO PARKING ANYTIME' PROHIBITION REVIEW**
BASS PRO MILLS DRIVE
WARD 4

The Committee of the Whole recommends approval of the recommendation contained in the following report of the Commissioner of Public Works and the Director of Transportation Services, Parks and Forestry Operations, dated September 9, 2015:

Recommendation

The Commissioner of Public Works and the Director of Transportation Services, Parks and Forestry Operations recommend:

1. That By-law 1-96, the Consolidated Parking By-law, Schedule "A" Part 1. be amended to add a 'No Parking Anytime' prohibition on the south side of Bass Pro Mills Drive, from 72 metres east of Edgeley Boulevard to 200 metres east of Edgeley Boulevard.

Contribution to Sustainability

This report contributes to the goals and objectives within Green Directions Vaughan, The City's Community Sustainability and Environmental Master Plan, specifically:

Goal 3: To ensure that Vaughan is a city that is easy to get around with a low environmental impact.

Objective 3.2 "To develop and sustain a network of roads that supports efficient and accessible public and private transit".

Economic Impact

The cost associated with the installation of the 'No Parking Anytime' prohibition signage has been included in the approved 2015 Operating Budget. The ongoing costs to maintain the signage will be incorporated into future year operating budgets.

Communications Plan

Staff have been in contact with local area business will advise them of the outcome of Council's decision in this matter.

Purpose

The purpose of this report is to review the feasibility of implementing a 'No Parking Anytime' prohibition on the south side of Bass Pro Mills Drive, within the vicinity of 160 to 180 Bass Pro Mills Drive.

Background - Analysis and Options

A review of parking activity was conducted within the vicinity of 160 and 180 Bass Pro Mills Drive.

A review of parking activity was conducted within the vicinity of 160 and 180 Bass Pro Mills Drive, on April 9, 2015, to review the feasibility of implementing a 'No Parking Anytime' prohibition within the vicinity of 160 to 180 Bass Pro Mills Drive.

CITY OF VAUGHAN

EXTRACT FROM COUNCIL MEETING MINUTES OF SEPTEMBER 16, 2015

Item 5, CW Report No. 31 – Page 2

Bass Pro Mills Drive is classified as a collector roadway with a statutory speed limit of 50 km/h and an approximate pavement width of 17.5 metres. Municipal sidewalks are located on both sides of the roadway. The roadway begins to slightly curve south in front of 180 Bass Pro Mills Drive. It should be noted that this curvilinear section of the roadway is the location of the proposed 'No Parking Anytime' prohibition. Currently, parking is permitted for a maximum of 3 hours on both sides of Bass Pro Mills Drive. A map of the area is provided in Attachment No. 1.

The existing parking activity at Bass Pro Mills Drive results in restricted sight distance and safety concerns for motorists exiting the driveways at 160 and 180 Bass Pro Mills Drive.

It has been verified that motorists are continuously parking on the south side of Bass Pro Mills Drive, from 72 metres east of Edgeley Boulevard to a point of 200 metres east of Edgeley Boulevard. This parking activity results in restricted sight distance and safety concerns for motorists exiting the driveways at 160 and 180 Bass Pro Mills Drive.

In order to address the safety concerns identified, a 'No Parking Anytime' prohibition is recommended on the south side of Bass Pro Mills Drive, from 72 metres east of Edgeley Boulevard to 200 metres east of Edgeley Boulevard.

Based on the curvature in the road alignment, a 'No Parking Anytime' prohibition is recommended on the south side of Bass Pro Mills Drive, from 72 metres east of Edgeley Boulevard to 200 metres east of Edgeley Boulevard, in order to improve sight distance and to increase safety for motorists exiting the driveways at 160 and 180 Bass Pro Mill Drive.

Approximately 16 vehicle parking spots would be removed from the on-street parking inventory from the identified area; however, there is ample parking opportunities on Bass Pro Mills Drive to accommodate parking that would be displaced by the proposed prohibition.

Relationship to Vaughan Vision 2020/Strategic Plan

The recommendations contained in this report support the following objectives of Vaughan Vision 2020:

Services Excellence

- Demonstrate Excellence in Service Delivery
- Promote Community Safety, Health and Wellness

Regional Implications

Not Applicable.

Conclusion

A 'No Parking Anytime' prohibition is recommended for the south side of Bass Pro Mill Drive, from 72 metres east of Edgeley Boulevard to 200 metres east of Edgeley Boulevard, in order to improve sight distance and to increase safety for motorists exiting the driveways at 160 and 180 Bass Pro Mills Drive.

Attachments

1. Location Map

CITY OF VAUGHAN

EXTRACT FROM COUNCIL MEETING MINUTES OF SEPTEMBER 16, 2015

Item 5, CW Report No. 31 – Page 3

Report prepared by:

Peter Trinh, Traffic Analyst, Ext. 6157

Adam Payler, Business Analyst, Ext. 6173

(A copy of the attachments referred to in the foregoing have been forwarded to each Member of Council and a copy thereof is also on file in the office of the City Clerk.)

**'NO PARKING ANYTIME' PROHIBITION REVIEW
BASS PRO MILLS DRIVE
WARD 4**

Recommendation

The Commissioner of Public Works and the Director of Transportation Services, Parks and Forestry Operations recommend:

1. That By-law 1-96, the Consolidated Parking By-law, Schedule "A" Part 1. be amended to add a 'No Parking Anytime' prohibition on the south side of Bass Pro Mills Drive, from 72 metres east of Edgeley Boulevard to 200 metres east of Edgeley Boulevard.

Contribution to Sustainability

This report contributes to the goals and objectives within Green Directions Vaughan, The City's Community Sustainability and Environmental Master Plan, specifically:

Goal 3: To ensure that Vaughan is a city that is easy to get around with a low environmental impact.

Objective 3.2 "To develop and sustain a network of roads that supports efficient and accessible public and private transit".

Economic Impact

The cost associated with the installation of the 'No Parking Anytime' prohibition signage has been included in the approved 2015 Operating Budget. The ongoing costs to maintain the signage will be incorporated into future year operating budgets.

Communications Plan

Staff have been in contact with local area business will advise them of the outcome of Council's decision in this matter.

Purpose

The purpose of this report is to review the feasibility of implementing a 'No Parking Anytime' prohibition on the south side of Bass Pro Mills Drive, within the vicinity of 160 to 180 Bass Pro Mills Drive.

Background - Analysis and Options

A review of parking activity was conducted within the vicinity of 160 and 180 Bass Pro Mills Drive.

A review of parking activity was conducted within the vicinity of 160 and 180 Bass Pro Mills Drive, on April 9, 2015, to review the feasibility of implementing a 'No Parking Anytime' prohibition within the vicinity of 160 to 180 Bass Pro Mills Drive.

Bass Pro Mills Drive is classified as a collector roadway with a statutory speed limit of 50 km/h and an approximate pavement width of 17.5 metres. Municipal sidewalks are located on both sides of the roadway. The roadway begins to slightly curve south in front of 180 Bass Pro Mills

Drive. It should be noted that this curvilinear section of the roadway is the location of the proposed 'No Parking Anytime' prohibition. Currently, parking is permitted for a maximum of 3 hours on both sides of Bass Pro Mills Drive. A map of the area is provided in Attachment No. 1.

The existing parking activity at Bass Pro Mills Drive results in restricted sight distance and safety concerns for motorists exiting the driveways at 160 and 180 Bass Pro Mills Drive.

It has been verified that motorists are continuously parking on the south side of Bass Pro Mills Drive, from 72 metres east of Edgeley Boulevard to a point of 200 metres east of Edgeley Boulevard. This parking activity results in restricted sight distance and safety concerns for motorists exiting the driveways at 160 and 180 Bass Pro Mills Drive.

In order to address the safety concerns identified, a 'No Parking Anytime' prohibition is recommended on the south side of Bass Pro Mills Drive, from 72 metres east of Edgeley Boulevard to 200 metres east of Edgeley Boulevard.

Based on the curvature in the road alignment, a 'No Parking Anytime' prohibition is recommended on the south side of Bass Pro Mills Drive, from 72 metres east of Edgeley Boulevard to 200 metres east of Edgeley Boulevard, in order to improve sight distance and to increase safety for motorists exiting the driveways at 160 and 180 Bass Pro Mill Drive.

Approximately 16 vehicle parking spots would be removed from the on-street parking inventory from the identified area; however, there is ample parking opportunities on Bass Pro Mills Drive to accommodate parking that would be displaced by the proposed prohibition.

Relationship to Vaughan Vision 2020/Strategic Plan

The recommendations contained in this report support the following objectives of Vaughan Vision 2020:

Services Excellence

- Demonstrate Excellence in Service Delivery
- Promote Community Safety, Health and Wellness

Regional Implications

Not Applicable.

Conclusion

A 'No Parking Anytime' prohibition is recommended for the south side of Bass Pro Mill Drive, from 72 metres east of Edgeley Boulevard to 200 metres east of Edgeley Boulevard, in order to improve sight distance and to increase safety for motorists exiting the driveways at 160 and 18 Bass Pro Mills Drive.

Attachments

1. Location Map

Report prepared by:

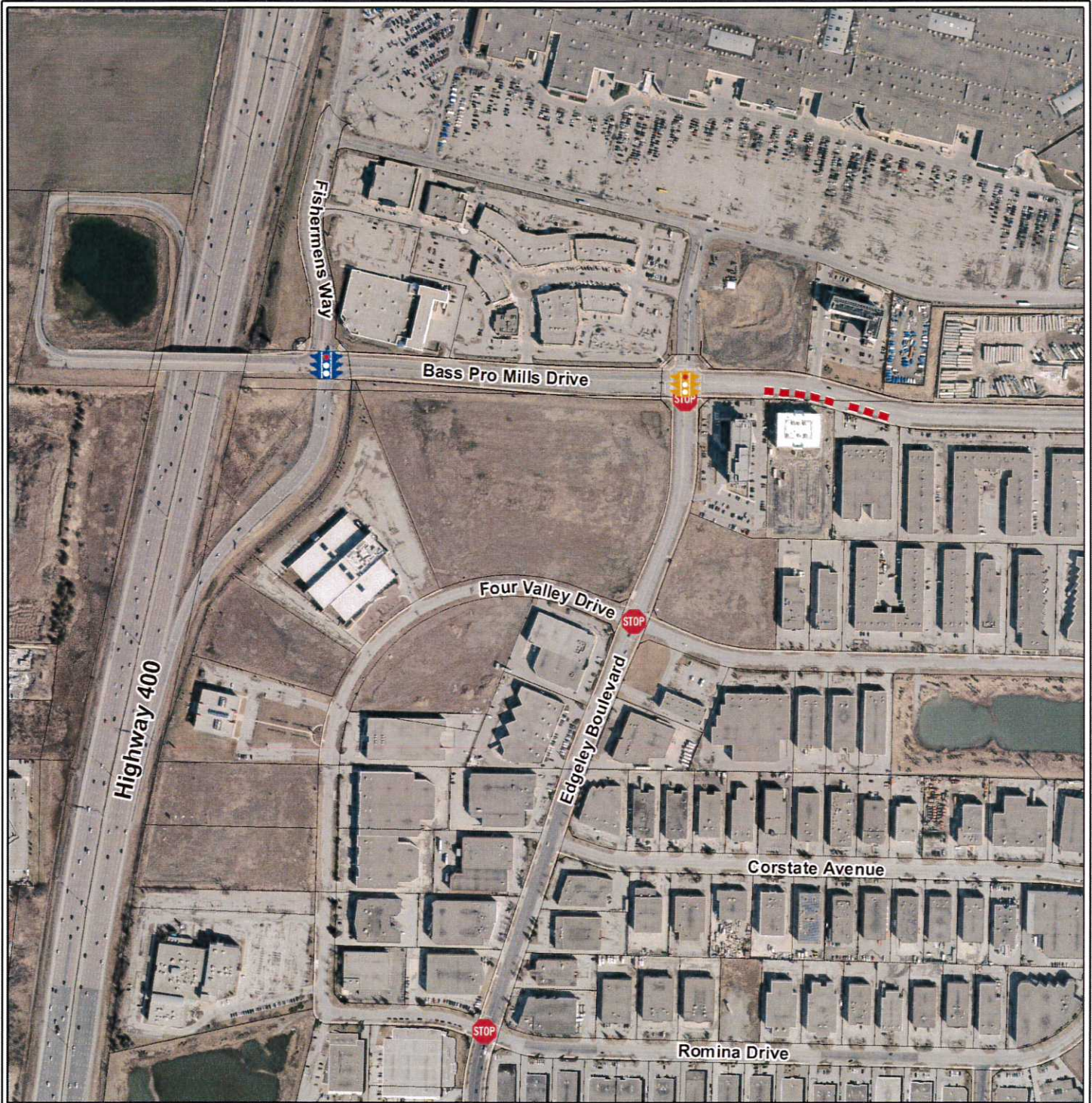
Peter Trinh, Traffic Analyst, Ext. 6157
Adam Payler, Business Analyst, Ext. 6173

Respectfully submitted,

Paul Jankowski, P. Eng.
Commissioner of Public Works

Zoran Postic,
Director of Transportation Services,
Parks & Forestry Department

ATTACHMENT No. 1







LOCATION MAP

'NO PARKING ANYTIME' PROHIBITION REVIEW

LOCATION: Bass Pro Mills Drive

LEGEND

-  All-Way Stop
-  Traffic Signals (City)
-  Traffic Signals (Other)
-  Proposed Parking Prohibition Area

Note: Aerial photography acquired in Spring 2014



NOT TO SCALE

F:\Common\ENG\ATTACHMENTS\TRAFFIC\ATTACHMENTS\BASS PRO MILLS PROPOSED PARKING\BASS PRO.JPG