

CITY OF VAUGHAN

EXTRACT FROM COUNCIL MEETING MINUTES OF SEPTEMBER 16, 2015

Item 4, Report No. 31, of the Committee of the Whole, which was adopted without amendment by the Council of the City of Vaughan on September 16, 2015.

4

**'U-TURN' PROHIBITION REVIEW
VIA CAMPANILE
WARD 3**

The Committee of the Whole recommends approval of the recommendation contained in the following report of the Commissioner of Public Works and the Director of Transportation Services, Parks and Forestry Operations, dated September 9, 2015:

Recommendation

The Commissioner of Public Works and the Director of Transportation Services, Parks and Forestry Operations recommend:

1. That By-law 284-94, the Consolidated Traffic By-law, be amended to add a 'U-Turn' prohibition on Via Campanile, from Basilica Drive to Grandvista Crescent (north intersection).

Contribution to Sustainability

This report contributes to the goals and objectives within Green Directions Vaughan, the City's Community Sustainability and Environmental Master Plan, specifically:

Goal 3: To ensure that Vaughan is a city that is easy to get around with a low environmental impact.

Objective 3.2 "To develop and sustain a network of roads that supports efficient and accessible public and private transit".

Economic Impact

The cost associated with the installation of the 'U-Turn' prohibition signage has been included in the approved 2015 Operating Budget. The ongoing costs to maintain the signage will be incorporated into future year operating budgets.

Communications Plan

Staff have been in contact with St. Michael the Archangel Catholic Elementary School Administration and area residents and will advise the local community of the outcome of Council's decision in this matter. Staff will also notify York Regional Police, and request enforcement of this prohibition.

Purpose

The purpose of this report is to review the feasibility of implementing a 'U-Turn' prohibition on Via Campanile, from Basilica Drive to Grandvista Crescent (north intersection).

Background - Analysis and Options

A review of traffic activity was conducted at Via Campanile from Basilica Drive to Grandvista Crescent (north intersection) and the vicinity area.

A review of traffic activity was conducted on May 13, 2015, at Via Campanile from Basilica Drive to Grandvista Crescent (north intersection), to review the feasibility of implementing a 'U-Turn' prohibition.

CITY OF VAUGHAN

EXTRACT FROM COUNCIL MEETING MINUTES OF SEPTEMBER 16, 2015

Item 4, CW Report No. 31 – Page 2

Via Campanile is a primary roadway with a 23.0 metre right-of-way, an 11.5 metre pavement width, and sidewalks along both sides. The road is one of the primary roads within the local community. St. Michael the Archangel Catholic Elementary School, located at 161 Via Campanile, and Via Campanile Park, located at 181 Via Campanile, are on the east side of the roadway, between La Rocca Avenue and Saint Frances Avenue/Grandvista Crescent (south intersection). A map of the area is provided in Attachment No. 1.

The intersection of Via Campanile and La Rocca Avenue and the intersection of Via Campanile and Saint Frances Avenue/Grandvista Crescent (south intersection) operate under an all-way stop control. There are pavement hatch-lines with 'Slow Down' pavement warning markings located between St. Michael the Archangel Catholic Elementary School's two driveways. There are existing 'No Parking Anytime' prohibitions located on the east side of Via Campanile, within 40 metres of the school's south driveway and on the east and west sides of Via Campanile, within 40 metres of Grandvista Crescent (north intersection)/the school's north driveway.

On-street parking along the east and west sides of Via Campanile in front of St. Michael the Archangel Catholic Elementary School results in 'U-Turn' traffic movements and corresponding safety concerns.

St. Michael the Archangel Catholic Elementary School's south driveway provides direct access to the school's parking lot. However, during pick-up/drop-off hours, the school parking lot is unable to accommodate the volume of motorists on-site and on-street parking occurs on both the east and west sides of Via Campanile, near the school's north and south driveways. As a result of the on-street parking, motorists perform undesirable 'U-Turn' movements to exit the school's vicinity.

Staff has confirmed that 'U-Turn' traffic movements in the vicinity of the school property increases traffic congestion and the number of conflicting traffic movements, which presents safety concerns for pedestrians, cyclists and motorists in the local community.

In order to address the safety concerns identified, a 'U-Turn' prohibition on Via Campanile from Basilica Drive to Grandvista Crescent (north intersection) is recommended.

To improve traffic operations and increase safety for pedestrians, cyclists and motorists within this community, a 'U-Turn' prohibition along Via Campanile, from Basilica Drive to Grandvista Crescent (north intersection), is recommended. The proposed location is consistent with the existing parking and stopping prohibitions and will prohibit 'U-Turns' in front of the school where pedestrian activity is occurring.

Relationship to Vaughan Vision 2020/Strategic Plan

The recommendations contained in this report support the following objectives of Vaughan Vision 2020:

Service Excellence

- Demonstrate Excellence in Service Delivery
- Promote Community Safety, Health and Wellness

Regional Implications

Not applicable.

CITY OF VAUGHAN

EXTRACT FROM COUNCIL MEETING MINUTES OF SEPTEMBER 16, 2015

Item 4, CW Report No. 31 – Page 3

Conclusion

A 'U-Turn' prohibition is recommended along Via Campanile, from Basilica Drive to Grandvista Crescent (north intersection), to improve traffic operations and increase safety for pedestrians, cyclists and motorists.

Attachments

1. Location Map

Report prepared by:

David Fan, Traffic Analyst, Ext. 6148
Mark Ranstoller, Senior Traffic Technologist, Ext. 6117
Adam Payler, Business Analyst, Ext. 6173

(A copy of the attachments referred to in the foregoing have been forwarded to each Member of Council and a copy thereof is also on file in the office of the City Clerk.)

'U-TURN' PROHIBITION REVIEW
VIA CAMPANILE
WARD 3

Recommendation

The Commissioner of Public Works and the Director of Transportation Services, Parks and Forestry Operations recommend:

1. That By-law 284-94, the Consolidated Traffic By-law, be amended to add a 'U-Turn' prohibition on Via Campanile, from Basilica Drive to Grandvista Crescent (north intersection).

Contribution to Sustainability

This report contributes to the goals and objectives within Green Directions Vaughan, the City's Community Sustainability and Environmental Master Plan, specifically:

Goal 3: To ensure that Vaughan is a city that is easy to get around with a low environmental impact.

Objective 3.2 "To develop and sustain a network of roads that supports efficient and accessible public and private transit".

Economic Impact

The cost associated with the installation of the 'U-Turn' prohibition signage has been included in the approved 2015 Operating Budget. The ongoing costs to maintain the signage will be incorporated into future year operating budgets.

Communications Plan

Staff have been in contact with St. Michael the Archangel Catholic Elementary School Administration and area residents and will advise the local community of the outcome of Council's decision in this matter. Staff will also notify York Regional Police, and request enforcement of this prohibition.

Purpose

The purpose of this report is to review the feasibility of implementing a 'U-Turn' prohibition on Via Campanile, from Basilica Drive to Grandvista Crescent (north intersection).

Background - Analysis and Options

A review of traffic activity was conducted at Via Campanile from Basilica Drive to Grandvista Crescent (north intersection) and the vicinity area.

A review of traffic activity was conducted on May 13, 2015, at Via Campanile from Basilica Drive to Grandvista Crescent (north intersection), to review the feasibility of implementing a 'U-Turn' prohibition.

Via Campanile is a primary roadway with a 23.0 metre right-of-way, an 11.5 metre pavement width, and sidewalks along both sides. The road is one of the primary roads within the local community. St. Michael the Archangel Catholic Elementary School, located at 161 Via Campanile, and Via Campanile Park, located at 181 Via Campanile, are on the east side of the roadway, between La Rocca Avenue and Saint Frances Avenue/Grandvista Crescent (south intersection). A map of the area is provided in Attachment No. 1.

The intersection of Via Campanile and La Rocca Avenue and the intersection of Via Campanile and Saint Frances Avenue/Grandvista Crescent (south intersection) operate under an all-way stop control. There are pavement hatch-lines with 'Slow Down' pavement warning markings located between St. Michael the Archangel Catholic Elementary School's two driveways. There are existing 'No Parking Anytime' prohibitions located on the east side of Via Campanile, within 40 metres of the school's south driveway and on the east and west sides of Via Campanile, within 40 metres of Grandvista Crescent (north intersection)/the school's north driveway.

On-street parking along the east and west sides of Via Campanile in front of St. Michael the Archangel Catholic Elementary School results in 'U-Turn' traffic movements and corresponding safety concerns.

St. Michael the Archangel Catholic Elementary School's south driveway provides direct access to the school's parking lot. However, during pick-up/drop-off hours, the school parking lot is unable to accommodate the volume of motorists on-site and on-street parking occurs on both the east and west sides of Via Campanile, near the school's north and south driveways. As a result of the on-street parking, motorists perform undesirable 'U-Turn' movements to exit the school's vicinity.

Staff has confirmed that 'U-Turn' traffic movements in the vicinity of the school property increases traffic congestion and the number of conflicting traffic movements, which presents safety concerns for pedestrians, cyclists and motorists in the local community.

In order to address the safety concerns identified, a 'U-Turn' prohibition on Via Campanile from Basilica Drive to Grandvista Crescent (north intersection) is recommended.

To improve traffic operations and increase safety for pedestrians, cyclists and motorists within this community, a 'U-Turn' prohibition along Via Campanile, from Basilica Drive to Grandvista Crescent (north intersection), is recommended. The proposed location is consistent with the existing parking and stopping prohibitions and will prohibit 'U-Turns' in front of the school where pedestrian activity is occurring.

Relationship to Vaughan Vision 2020/Strategic Plan

The recommendations contained in this report support the following objectives of Vaughan Vision 2020:

Service Excellence

- Demonstrate Excellence in Service Delivery
- Promote Community Safety, Health and Wellness

Regional Implications

Not applicable.

Conclusion

A 'U-Turn' prohibition is recommended along Via Campanile, from Basilica Drive to Grandvista Crescent (north intersection), to improve traffic operations and increase safety for pedestrians, cyclists and motorists.

Attachments

1. Location Map

Report prepared by:

David Fan, Traffic Analyst, Ext. 6148

Mark Ranstoller, Senior Traffic Technologist, Ext. 6117

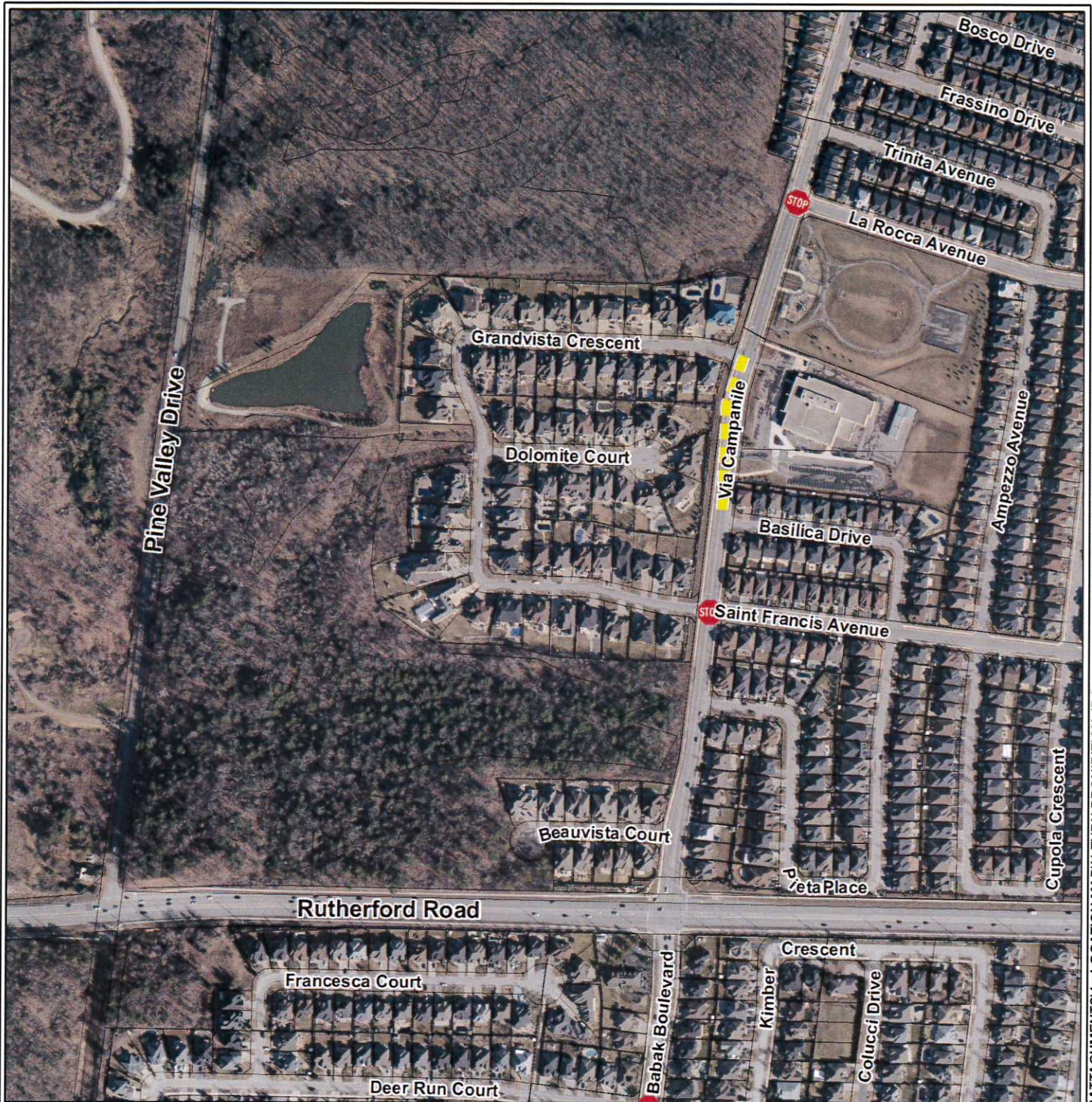
Adam Payler, Business Analyst, Ext. 6173

Respectfully submitted,

Paul Jankowski
Commissioner of Public Works

Zoran Postic
Director of Transportation Services,
Parks and Forestry Operations



ATTACHMENT No. 1



LOCATION MAP U-TURN PROHIBITION REVIEW

LOCATION: Via Campanile

LEGEND

-  Existing All-Way Stop
-  Proposed U-Turn Prohibition

Note: Aerial photography acquired in Spring 2014

