

CITY OF VAUGHAN

EXTRACT FROM COUNCIL MEETING MINUTES OF SEPTEMBER 9, 2014

Item 28, Report No. 36, of the Committee of the Whole, which was adopted without amendment by the Council of the City of Vaughan on September 9, 2014.

28

**'U-TURN' PROHIBITION REVIEW
BELVIEW AVENUE
WARD 3**

The Committee of the Whole recommends approval of the recommendation contained in the following report of the Commissioner of Public Works and the Director of Engineering Services, dated September 2, 2014:

Recommendation

The Commissioner of Public Works and the Director of Engineering Services recommend:

1. That By-law 284-94, the Consolidated Traffic By-law, be amended to add a U-turn prohibition on Belview Avenue, from the west driveway of St. John Bosco Catholic Elementary School to the east driveway of St. John Bosco Catholic Elementary School.

Contribution to Sustainability

Not Applicable.

Economic Impact

The cost associated with the installation of the U-turn prohibition signage is estimated to be \$900.00, and has been included within the approved 2014 Operating Budget.

Communications Plan

Staff will advise the St. John Bosco Catholic Elementary School Administration and area residents of the outcome of Council's decision in this matter. Staff will also notify York Regional Police, and request enforcement of this prohibition.

Purpose

To review the feasibility of implementing a U-turn prohibition on Belview Avenue in front of St. John Bosco Catholic Elementary School.

Background - Analysis and Options

On-street parking along the south side of Belview Avenue in front of St. John Bosco Catholic School results in U-turn traffic movements

Belview Avenue is a major collector roadway with a 26.0 metre right-of-way, a 14.0 metre pavement width, and sidewalks along both sides. The road is one of the primary roads within the local community. Refer to Attachment No. 1.

St. John Bosco Catholic Elementary School, located at 199 Belview Avenue, is on the south side of the roadway, opposite Stan Gate.

The intersection of Belview Avenue and Stan Gate operates under all-way stop control and is located between the school's two driveway accesses. There are centre median islands on the east and west sides of the intersection of Belview Avenue and Stan Gate. The existing parking and stopping prohibitions are located on both sides of Belview Avenue between the east and west school driveway accesses.

CITY OF VAUGHAN

EXTRACT FROM COUNCIL MEETING MINUTES OF SEPTEMBER 9, 2014

Item 28, CW Report No. 36 – Page 2

There are two school accesses on Belview Avenue. The westerly driveway provides direct access to the school parking lot. However, during peak times the school parking lot is not able to accommodate the pick-up/drop-off activities on-site. As a result of parking on both sides of Belview Avenue near the school driveway accesses, drivers perform undesirable U-turn movements which cause traffic issues.

U-turn traffic movements during the school's start and dismissal times create safety concerns

Following the receipt of a request from the school principal, City staff reviewed this matter and undertook traffic studies on May 21st and 22nd, 2014. Staff have confirmed that U-turn traffic movements in the vicinity of the school property increases traffic congestion and the number of conflicting traffic movements, which negatively impacts pedestrians, cyclists and motorists in the local community.

Belview Avenue, from the west school driveway access to the east school driveway access was identified as the limits of the proposed U-turn prohibition

To improve traffic operations for pedestrians, cyclists and motorists within this community, a U-turn prohibition along Belview Avenue, from the west school driveway access to the east school driveway access is recommended. The proposed location is consistent with the existing parking and stopping prohibitions and will prohibit U-turns in front of the school where pedestrian activity is taking place.

Relationship to Vaughan Vision 2020/Strategic Plan

In consideration of the strategic priorities related to Vaughan 2020, the recommended U-turn prohibition will improve traffic flow and pedestrian safety along this roadway, thus enhancing community safety, health and wellness.

Regional Implications

Not Applicable.

Conclusion

A U-turn prohibition is recommended along Belview Avenue from the west driveway access to the east driveway access of St. John Bosco Catholic Elementary School.

Attachments

1. Location Map

Report prepared by:

Mark Ranstoller, Senior Traffic Technologist, Ext. 8726
Vince Musacchio, Manager of Capital Planning & Infrastructure, Ext. 8311

(A copy of the attachments referred to in the foregoing have been forwarded to each Member of Council and a copy thereof is also on file in the office of the City Clerk.)

COMMITTEE OF THE WHOLE – SEPTEMBER 2, 2014

'U-TURN' PROHIBITION REVIEW **BELVIEW AVENUE** **WARD 3**

Recommendation

The Commissioner of Public Works and the Director of Engineering Services recommend:

1. That By-law 284-94, the Consolidated Traffic By-law, be amended to add a U-turn prohibition on Belview Avenue, from the west driveway of St. John Bosco Catholic Elementary School to the east driveway of St. John Bosco Catholic Elementary School.

Contribution to Sustainability

Not Applicable.

Economic Impact

The cost associated with the installation of the U-turn prohibition signage is estimated to be \$900.00, and has been included within the approved 2014 Operating Budget.

Communications Plan

Staff will advise the St. John Bosco Catholic Elementary School Administration and area residents of the outcome of Council's decision in this matter. Staff will also notify York Regional Police, and request enforcement of this prohibition.

Purpose

To review the feasibility of implementing a U-turn prohibition on Belview Avenue in front of St. John Bosco Catholic Elementary School.

Background - Analysis and Options

On-street parking along the south side of Belview Avenue in front of St. John Bosco Catholic School results in U-turn traffic movements

Belview Avenue is a major collector roadway with a 26.0 metre right-of-way, a 14.0 metre pavement width, and sidewalks along both sides. The road is one of the primary roads within the local community. Refer to Attachment No. 1.

St. John Bosco Catholic Elementary School, located at 199 Belview Avenue, is on the south side of the roadway, opposite Stan Gate.

The intersection of Belview Avenue and Stan Gate operates under all-way stop control and is located between the school's two driveway accesses. There are centre median islands on the east and west sides of the intersection of Belview Avenue and Stan Gate. The existing parking and stopping prohibitions are located on both sides of Belview Avenue between the east and west school driveway accesses.

There are two school accesses on Belview Avenue. The westerly driveway provides direct access to the school parking lot. However, during peak times the school parking lot is not able to accommodate the pick-up/drop-off activities on-site. As a result of parking on both sides of

Belview Avenue near the school driveway accesses, drivers perform undesirable U-turn movements which cause traffic issues.

U-turn traffic movements during the school's start and dismissal times create safety concerns

Following the receipt of a request from the school principal, City staff reviewed this matter and undertook traffic studies on May 21st and 22nd, 2014. Staff have confirmed that U-turn traffic movements in the vicinity of the school property increases traffic congestion and the number of conflicting traffic movements, which negatively impacts pedestrians, cyclists and motorists in the local community.

Belview Avenue, from the west school driveway access to the east school driveway access was identified as the limits of the proposed U-turn prohibition

To improve traffic operations for pedestrians, cyclists and motorists within this community, a U-turn prohibition along Belview Avenue, from the west school driveway access to the east school driveway access is recommended. The proposed location is consistent with the existing parking and stopping prohibitions and will prohibit U-turns in front of the school where pedestrian activity is taking place.

Relationship to Vaughan Vision 2020/Strategic Plan

In consideration of the strategic priorities related to Vaughan 2020, the recommended U-turn prohibition will improve traffic flow and pedestrian safety along this roadway, thus enhancing community safety, health and wellness.

Regional Implications

Not Applicable.

Conclusion

A U-turn prohibition is recommended along Belview Avenue from the west driveway access to the east driveway access of St. John Bosco Catholic Elementary School.

Attachments

1. Location Map

Report prepared by:

Mark Ranstoller, Senior Traffic Technologist, Ext. 8726
Vince Musacchio, Manager of Capital Planning & Infrastructure, Ext. 8311

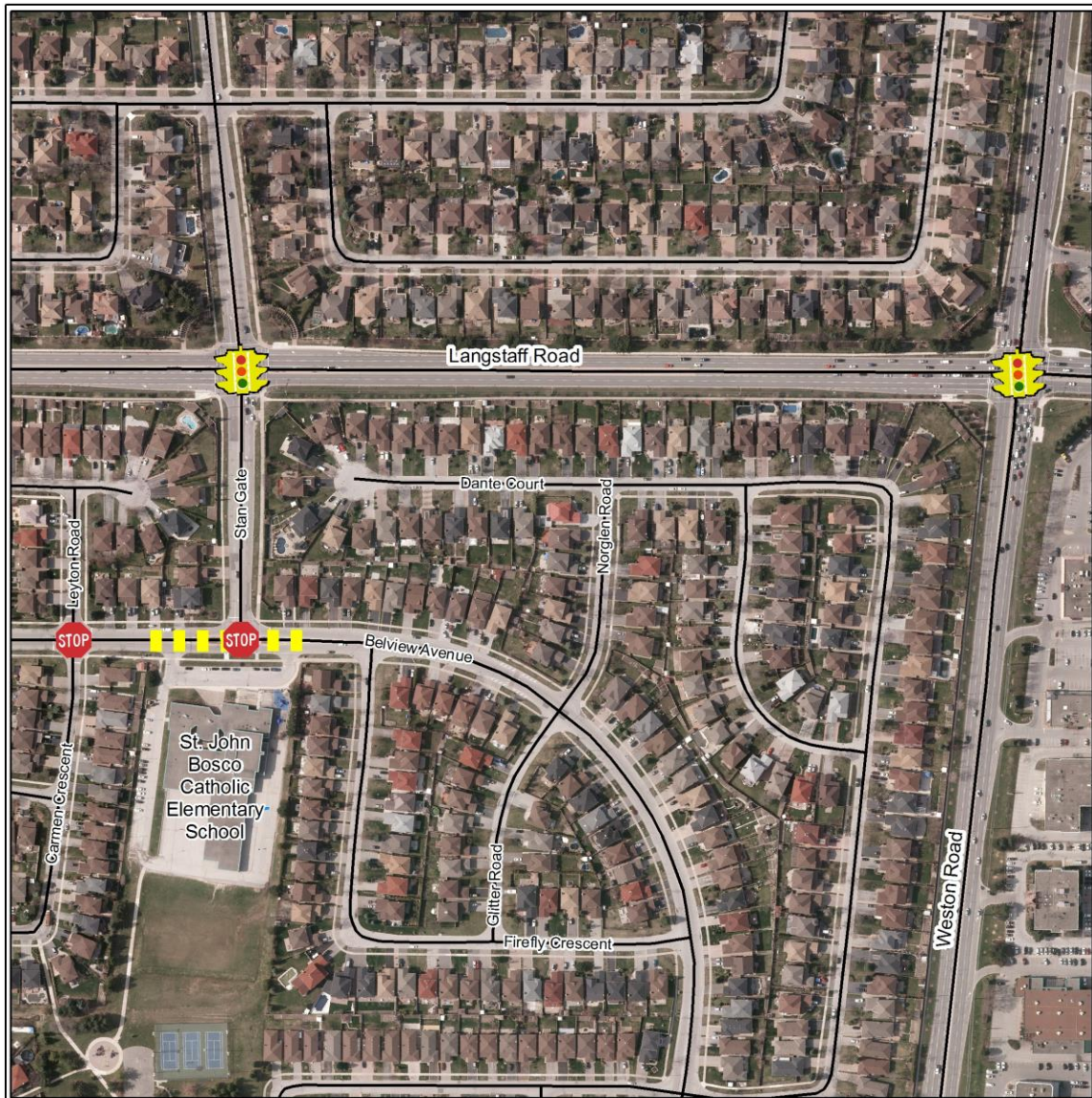
Respectfully submitted,

Paul Jankowski
Commissioner of Public Works

Jack Graziosi
Director of Engineering Services

MR:mm

ATTACHMENT No.1



Legend



Existing Traffic Signals



Existing All-Way Stop



Proposed U - Turn Prohibition

Note: Aerial photography acquired Spring, 2013

LOCATION MAP U-TURN PROHIBITION REVIEW

LOCATION: Belview Avenue



NOT TO SCALE

THE CITY OF VAUGHAN

BY-LAW

BY-LAW NUMBER 126-2014

A By-law to amend the Consolidated Traffic By-law 284-94 as amended, to govern and control traffic in the City of Vaughan.

The Council of The Corporation of the City of Vaughan ENACTS AS FOLLOWS:

1. THAT City of Vaughan By-law 284-94, be and it is hereby further amended by adding the following provisions to schedule "F", Part 2:

<u>HIGHWAY / INTERSECTION</u>	<u>DIRECTION TURN</u>	<u>PROHIBITED</u>	<u>TIME / DAY</u>	<u>EXCEPTION</u>
Belview Avenue from the west St. John Bosco CES school driveway to the east St. John Bosco CES school driveway	Eastbound/ Westbound	U-Turn	Anytime	None

Enacted by City of Vaughan Council this 9th day of September, 2014.

Hon. Maurizio Bevilacqua, Mayor

Jeffrey A. Abrams, City Clerk