

**CITY OF VAUGHAN**

**EXTRACT FROM COUNCIL MEETING MINUTES OF JUNE 24, 2014**

Item 9, Report No. 26, of the Committee of the Whole, which was adopted without amendment by the Council of the City of Vaughan on June 24, 2014.

**9**

**ALL-WAY STOP CONTROL REVIEW  
VELLORE PARK AVENUE AND RETREAT BOULEVARD  
WARD 3**

**The Committee of the Whole recommends approval of the recommendation contained in the following report of the Commissioner of Engineering and Public Works and the Director of Engineering Services, dated June 3, 2014:**

**Recommendation**

The Commissioner of Engineering and Public Works and the Director of Engineering Services recommend:

1. That Council enacts a By-law to install an all-way stop control at the intersection of Vellore Park Avenue and Retreat Boulevard.

**Contribution to Sustainability**

Not Applicable.

**Economic Impact**

The capital costs associated with the installation of the all-way stop signs is estimated to be \$500.00, and has been included in the approved 2014 Operating Budget. The on-going costs to maintain the signs and pavement markings (stop bars), is estimated to be \$150.00 per annum, and will be incorporated in future year Operating Budgets.

**Communications Plan**

Staff will advise area residents of the outcome of Council's decision in this matter.

**Purpose**

To review the feasibility of implementing an all-way stop control at the intersection of Vellore Park Avenue and Retreat Boulevard.

**Background - Analysis and Options**

**A review of the existing operations of the intersection of Vellore Park Avenue and Retreat Boulevard was conducted**

Staff carried out a review of the traffic activity at the intersection of Vellore Park Avenue and Retreat Boulevard.

Vellore Park Avenue and Retreat Boulevard are minor collector roadways with a 23.0 metre right-of-way and an 11.5 metre pavement width. The intersection of Vellore Park Avenue and Retreat Boulevard is a four-leg intersection with the existing stop controls on Retreat Boulevard. The area is shown in Attachment No.1.

## **CITY OF VAUGHAN**

### **EXTRACT FROM COUNCIL MEETING MINUTES OF JUNE 24, 2014**

Item 9, CW Report No. 26 – Page 2

#### **The existing traffic volumes at the intersection of Vellore Park Avenue and Retreat Boulevard exceed the Provincial Warrant for All-way Stop Controls**

Staff conducted a turning movement count on May 15, 2014 at this intersection. The study was conducted during the peak traffic periods of 7:00 a.m. to 9:00 a.m. and 4:00 p.m. to 6:00 p.m. Staff also reviewed the accident records for 2013 and sight lines at the approaches to the intersection. The data collected was compared to the Provincial Warrant for All-way Stop Control with the following results:

|   |           |      |
|---|-----------|------|
| • Warrant 1 – Minimum Vehicular Volumes | Warranted | 101% |
| • Warrant 2 – Accident Hazard           | Warranted | 0%   |
| • Warrant 3 – Sight Restriction         | Warranted | 0%   |

#### **All-way Stop Controls are recommended at the intersection of Vellore Park Avenue and Retreat Boulevard**

All-way stop controls are recommended when one of the above warrants are satisfied to 100% or more. As shown above, existing traffic volumes exceed Warrant #1 requirements. There were zero recorded vehicle collisions at this intersection in the year 2013. To date, this is the latest collision data available from York Regional Police. There are no sight restrictions at this intersection. As the information above indicates, this intersection meets the minimum requirements of the Provincial Warrant for All-way Stop Control.

The proposed all-way stop would also benefit both vehicular and pedestrian movements in the area.

#### **Relationship to Vaughan Vision 2020/Strategic Plan**

In consideration of the strategic priorities related to Vaughan Vision 2020, the recommended all-way stop will improve traffic flow for both drivers and pedestrians at the intersection, thus promoting community safety, health and wellness.

#### **Regional Implications**

Not Applicable.

#### **Conclusion**

It is recommended that an all-way stop control be installed at the intersection of Vellore Park Avenue and Retreat Boulevard as the minimum requirement of the Provincial Warrant for All-way Stop Control is met.

#### **Attachments**

1. Location Map

#### **Report prepared by:**

Wai Lam Tang, Senior Traffic Technologist, Ext. 8496  
Vince Musacchio, Manager of Capital Planning & Infrastructure, Ext. 8311

(A copy of the attachments referred to in the foregoing have been forwarded to each Member of Council and a copy thereof is also on file in the office of the City Clerk.)

## **COMMITTEE OF THE WHOLE – JUNE 3, 2014**

### **ALL-WAY STOP CONTROL REVIEW VELLORE PARK AVENUE AND RETREAT BOULEVARD WARD 3**

#### **Recommendation**

The Commissioner of Engineering and Public Works and the Director of Engineering Services recommend:

1. That Council enacts a By-law to install an all-way stop control at the intersection of Vellore Park Avenue and Retreat Boulevard.

#### **Contribution to Sustainability**

Not Applicable.

#### **Economic Impact**

The capital costs associated with the installation of the all-way stop signs is estimated to be \$500.00, and has been included in the approved 2014 Operating Budget. The on-going costs to maintain the signs and pavement markings (stop bars), is estimated to be \$150.00 per annum, and will be incorporated in future year Operating Budgets.

#### **Communications Plan**

Staff will advise area residents of the outcome of Council's decision in this matter.

#### **Purpose**

To review the feasibility of implementing an all-way stop control at the intersection of Vellore Park Avenue and Retreat Boulevard.

#### **Background - Analysis and Options**

##### **A review of the existing operations of the intersection of Vellore Park Avenue and Retreat Boulevard was conducted**

Staff carried out a review of the traffic activity at the intersection of Vellore Park Avenue and Retreat Boulevard.

Vellore Park Avenue and Retreat Boulevard are minor collector roadways with a 23.0 metre right-of-way and an 11.5 metre pavement width. The intersection of Vellore Park Avenue and Retreat Boulevard is a four-leg intersection with the existing stop controls on Retreat Boulevard. The area is shown in Attachment No.1.

##### **The existing traffic volumes at the intersection of Vellore Park Avenue and Retreat Boulevard exceed the Provincial Warrant for All-way Stop Controls**

Staff conducted a turning movement count on May 15, 2014 at this intersection. The study was conducted during the peak traffic periods of 7:00 a.m. to 9:00 a.m. and 4:00 p.m. to 6:00 p.m. Staff also reviewed the accident records for 2013 and sight lines at the approaches to the intersection. The data collected was compared to the Provincial Warrant for All-way Stop Control with the following results:

|   |           |      |
|---|-----------|------|
| • Warrant 1 – Minimum Vehicular Volumes | Warranted | 101% |
| • Warrant 2 – Accident Hazard           | Warranted | 0%   |
| • Warrant 3 – Sight Restriction         | Warranted | 0%   |

**All-way Stop Controls are recommended at the intersection of Vellore Park Avenue and Retreat Boulevard**

All-way stop controls are recommended when one of the above warrants are satisfied to 100% or more. As shown above, existing traffic volumes exceed Warrant #1 requirements. There were zero recorded vehicle collisions at this intersection in the year 2013. To date, this is the latest collision data available from York Regional Police. There are no sight restrictions at this intersection. As the information above indicates, this intersection meets the minimum requirements of the Provincial Warrant for All-way Stop Control.

The proposed all-way stop would also benefit both vehicular and pedestrian movements in the area.

**Relationship to Vaughan Vision 2020/Strategic Plan**

In consideration of the strategic priorities related to Vaughan Vision 2020, the recommended all-way stop will improve traffic flow for both drivers and pedestrians at the intersection, thus promoting community safety, health and wellness.

**Regional Implications**

Not Applicable.

**Conclusion**

It is recommended that an all-way stop control be installed at the intersection of Vellore Park Avenue and Retreat Boulevard as the minimum requirement of the Provincial Warrant for All-way Stop Control is met.

**Attachments**

1. Location Map

**Report prepared by:**

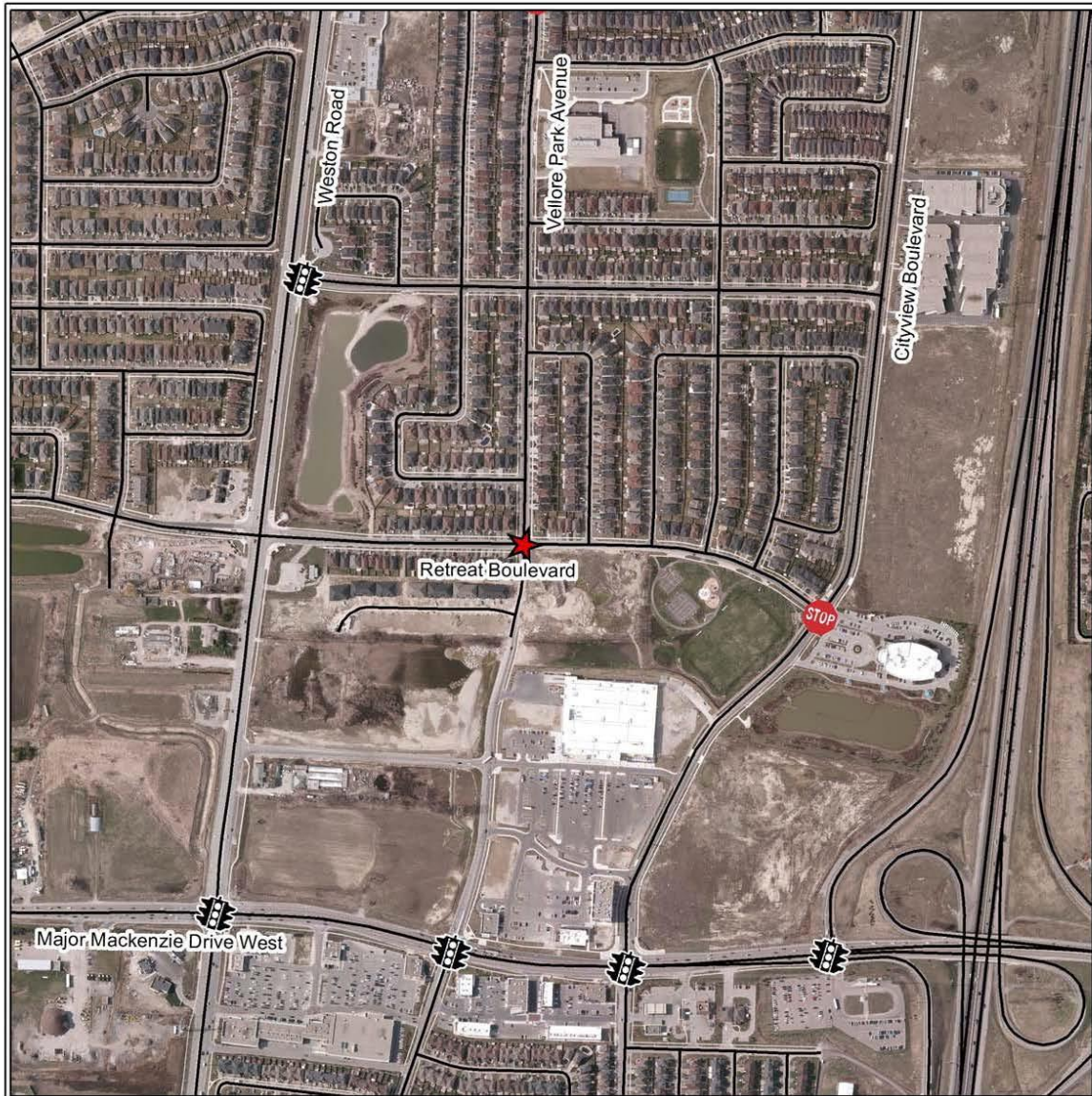
Wai Lam Tang, Senior Traffic Technologist, Ext. 8496  
Vince Musacchio, Manager of Capital Planning & Infrastructure, Ext. 8311

Respectfully submitted,

Paul Jankowski  
Commissioner of Engineering and Public Works  
WT:mm

Jack Graziosi  
Director of Engineering Services

# ATTACHMENT No.1



**Legend**

- Intersection in Review
- EXISTING ALL WAY STOP CONTROL
- EXISTING TRAFFIC SIGNAL

Note: Aerial photography acquired Spring, 2013

**LOCATION MAP**

**ALL-WAY STOP CONTROL REVIEW**

LOCATION: Vellore Park Avenue & Retreat Boulevard

NOT TO SCALE

N

F:\Common\ENG\ATTACHMENTS\TRAFFIC\ATTACHMENTS\All Way Stop - Vellore Park Avenue and Retreat Blvd