

CITY OF VAUGHAN

EXTRACT FROM COUNCIL MEETING MINUTES OF JUNE 7, 2016

Item 24, Report No. 24, of the Committee of the Whole, which was adopted without amendment by the Council of the City of Vaughan on June 7, 2016.

**24 ALL-WAY STOP CONTROL AT SOUTHDOWN AVENUE AND SHALE CRESCENT
(SOUTH INTERSECTION) AND SOUTHDOWN AVENUE AND AEGIS DRIVE**

The Committee of the Whole recommends approval of the recommendation contained in the following resolution submitted by Councillor Yeung Racco, dated May 31, 2016:

Member's Resolution

Submitted by Councillor Sandra Yeung Racco.

Whereas, the intersections of Southdown Avenue and Shale Crescent (south intersection) and Southdown Avenue and Aegis Drive are “four-leg” intersections, and existing stop controls were installed on Southdown Avenue for north-south traffic in accordance to the approved Block 11 Transportation Management Plan dated August 2002; and

Whereas, at the Council meeting of April 19, 2016 a recommendation was approved to re-orient the stop controls at the intersections of Southdown Avenue and Shale Crescent (south intersection), and Southdown Avenue and Aegis Drive for east-west traffic due to traffic patterns; and

Whereas, the new stop signs at the east-west approaches were installed on April 19, and the intersection is temporarily operating as an allway stop until the stop signs at the north-south approaches are removed; and

Whereas, a number of residents living near the intersections of Southdown Avenue and Shale Crescent (south intersection), and Southdown Avenue and Aegis Drive have expressed concerns regarding the removal of the stop signs at the north-south approaches and overall pedestrian safety in the vicinity of both intersections; and

Whereas, the intersection of Southdown Avenue and Shale Crescent experiences significant traffic activity as a result of school bus stops located at the southeast corner; and

Whereas, Shale Crescent and Aegis Drive provide mid-block access points for pedestrian crossings along Southdown Avenue (Refer to Attachment No. 1); and

Whereas, the intersections of Southdown Avenue and Shale Crescent (south intersection), and Southdown Avenue and Aegis Drive experience pedestrian activity with residents walking to and from Anne Frank Public School and accessing Pioneer Park; and

Whereas, sidewalk access for pedestrians only exists on the west side of Southdown Avenue and the south side of Shale Crescent providing a connection to Anne Frank Public School, Pioneer Park, and Southvale Pond and increasing pedestrian crossings at these two intersections; and

Whereas, there are currently no all-way stop controls or other traffic control measures along Southdown Avenue, between Valley Vista Drive and Shale Crescent (north intersection).

It is therefore recommended that an all-way stop control, as well as advance notification signage, be installed at the intersections of Southdown Avenue and Shale Crescent (south intersection) and Southdown Avenue and Aegis Drive to provide a crossing for pedestrians and access for surrounding residents crossing Southdown Avenue.

CITY OF VAUGHAN

EXTRACT FROM COUNCIL MEETING MINUTES OF JUNE 7, 2016

Item 24, CW Report No. 24 – Page 2

Attachments

Attachment No. 1 – Location Map

(A copy of the attachments referred to in the foregoing have been forwarded to each Member of Council and a copy thereof is also on file in the office of the City Clerk.)

MEMBER'S RESOLUTION

Date:	MAY 31, 2016 – COMMITTEE OF THE WHOLE
Title:	ALL-WAY STOP CONTROL AT SOUTHDOWN AVENUE AND SHALE CRESCENT (SOUTH INTERSECTION) AND SOUTHDOWN AVENUE AND AEGIS DRIVE
Submitted by:	Councillor Sandra Yeung Racco

Whereas, the intersections of Southdown Avenue and Shale Crescent (south intersection) and Southdown Avenue and Aegis Drive are “four-leg” intersections, and existing stop controls were installed on Southdown Avenue for north-south traffic in accordance to the approved Block 11 Transportation Management Plan dated August 2002; and

Whereas, at the Council meeting of April 19, 2016 a recommendation was approved to re-orient the stop controls at the intersections of Southdown Avenue and Shale Crescent (south intersection), and Southdown Avenue and Aegis Drive for east-west traffic due to traffic patterns; and

Whereas, the new stop signs at the east-west approaches were installed on April 19, and the intersection is temporarily operating as an allway stop until the stop signs at the north-south approaches are removed; and

Whereas, a number of residents living near the intersections of Southdown Avenue and Shale Crescent (south intersection), and Southdown Avenue and Aegis Drive have expressed concerns regarding the removal of the stop signs at the north-south approaches and overall pedestrian safety in the vicinity of both intersections; and

Whereas, the intersection of Southdown Avenue and Shale Crescent experiences significant traffic activity as a result of school bus stops located at the southeast corner; and

Whereas, Shale Crescent and Aegis Drive provide mid-block access points for pedestrian crossings along Southdown Avenue (Refer to Attachment No. 1); and

Whereas, the intersections of Southdown Avenue and Shale Crescent (south intersection), and Southdown Avenue and Aegis Drive experience pedestrian activity with residents walking to and from Anne Frank Public School and accessing Pioneer Park; and

Whereas, sidewalk access for pedestrians only exists on the west side of Southdown Avenue and the south side of Shale Crescent providing a connection to Anne Frank Public School, Pioneer Park, and Southvale Pond and increasing pedestrian crossings at these two intersections; and

Whereas, there are currently no all-way stop controls or other traffic control measures along Southdown Avenue, between Valley Vista Drive and Shale Crescent (north intersection).

It is therefore recommended that an all-way stop control, as well as advance notification signage, be installed at the intersections of Southdown Avenue and Shale Crescent (south intersection) and Southdown Avenue and Aegis Drive to provide a crossing for pedestrians and access for surrounding residents crossing Southdown Avenue.

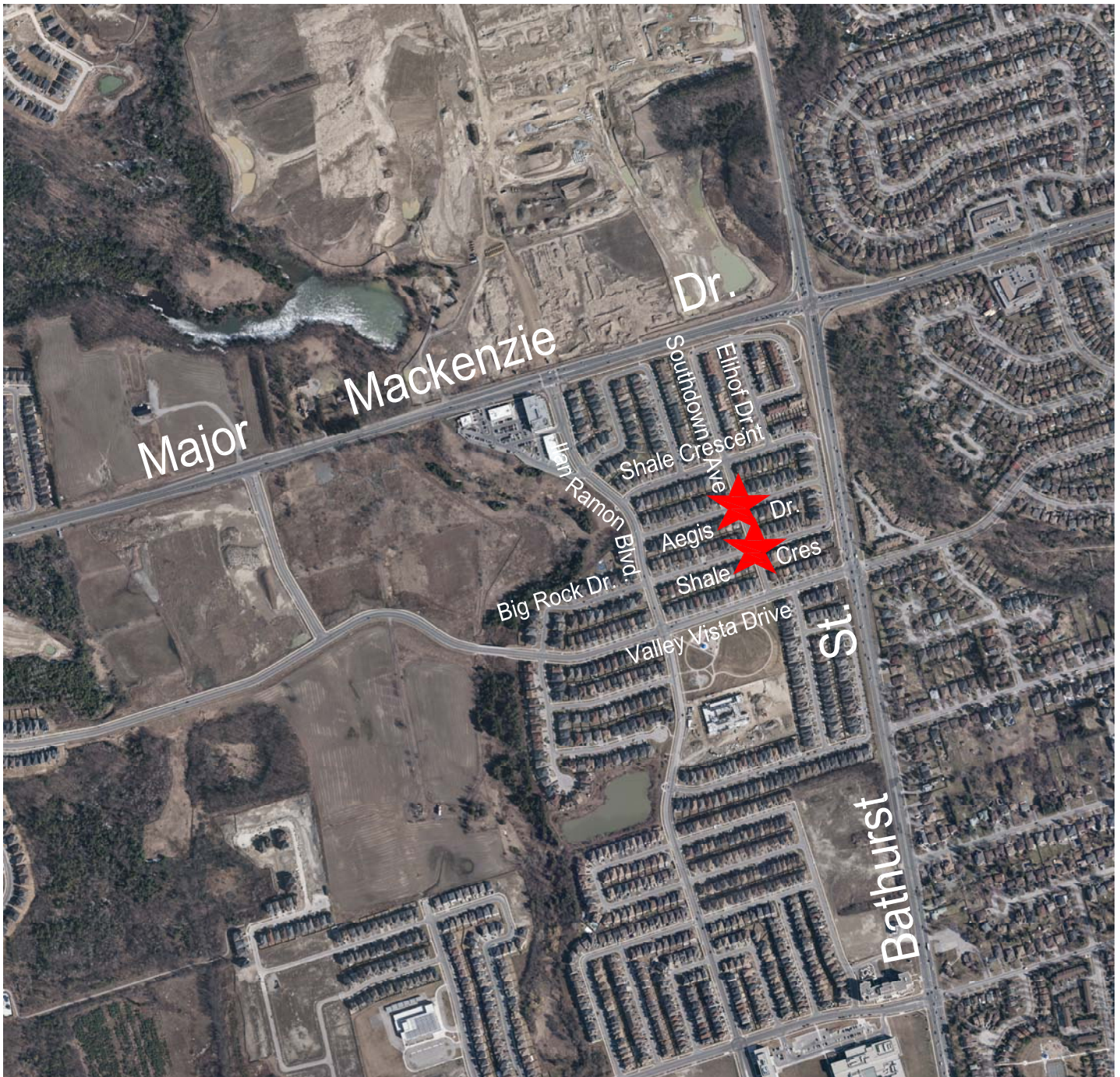
Respectfully submitted,

Sandra Yeung Racco
Councillor, Ward 4 (Concord/Thornhill North)

Attachments

Attachment No. 1 – Location Map

ATTACHMENT No. 1



ALL - WAY STOP CONTROL PROPOSAL
SOUTHDOWN AVENUE AND SHALE CRESCENT (SOUTH INTERSECTION) &
SOUTHDOWN AVENUE AND AEGIS DRIVE
WARD 4

LEGEND



PROPOSED ALL-WAY STOP



NOT TO SCALE