

C	2
COMMUNICATION	
CW	(ws) May 8/17
ITEM -	2

# Update on the Corporate Asset Management Strategy

Committee of the Whole (Working Session)

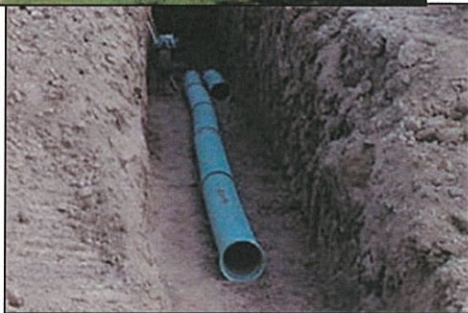
May 8, 2017

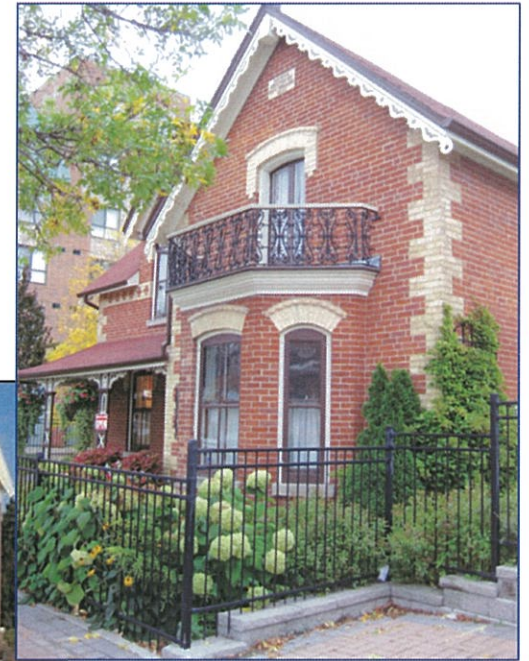


CANADA 150



# Our Services Rely on Assets & Infrastructure



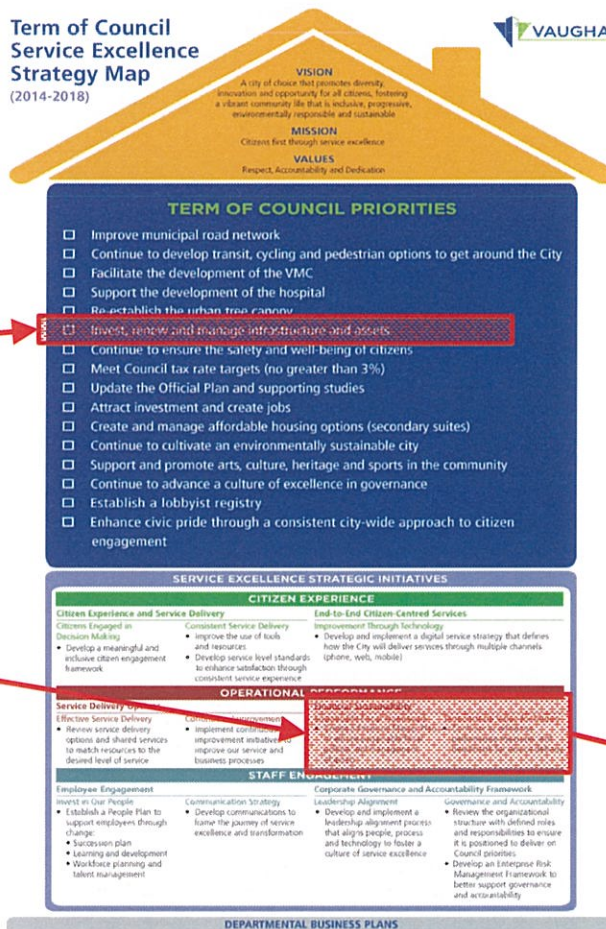


## Asset Management

## A Council Priority &

## Pillar of Financial Sustainability

### Term of Council Service Excellence Strategy Map (2014-2018)



## Financial Sustainability

### Guiding Principles

### Principles in Action

1. Consideration Towards Existing Service Levels
2. Growth Pays for Growth
3. New Initiatives to Enhance the City

#### Approach to:

- Infrastructure
- Services
- Managing Money

# Background on the Corporate Asset Management Strategy

## 2013

- AM Gap Assessment completed

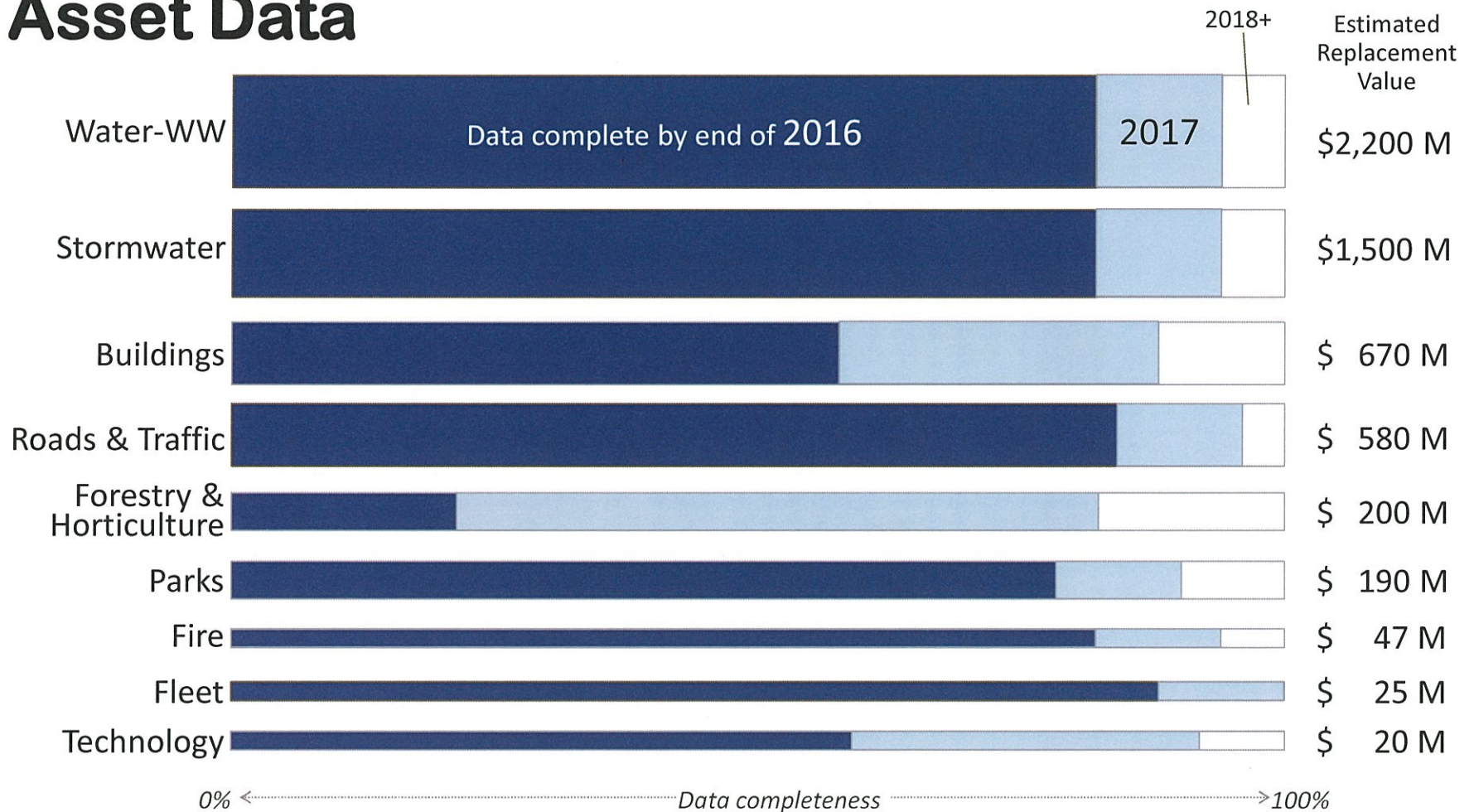


## 2014

- Corporate AM Strategy & Roadmap developed
- Council approved:

– Capital budget (Gas Tax)	Data Collection	\$0.50 M
	Work Order Management Improvements	\$1.65 M
	AM Planning System	\$0.35 M
– Operating budget	Corporate AM Office (5 FTE)	

# Asset Data



# Asset Data

Recently collected asset data are essential for AM Strategy initiatives:

- More efficient work order management
- Better asset management decision-making

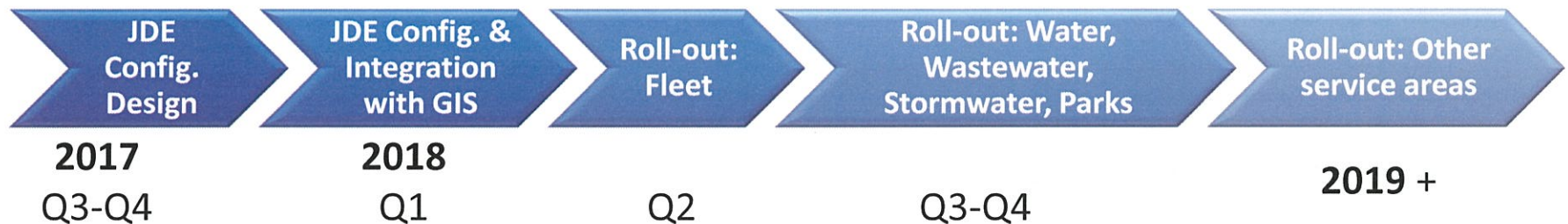
Asset data are also directly supporting several Term of Council Priority projects:

- Parks Revitalization Strategy
- Beautification Strategy
- Active Together Master Plan
- Development Charges Background Study



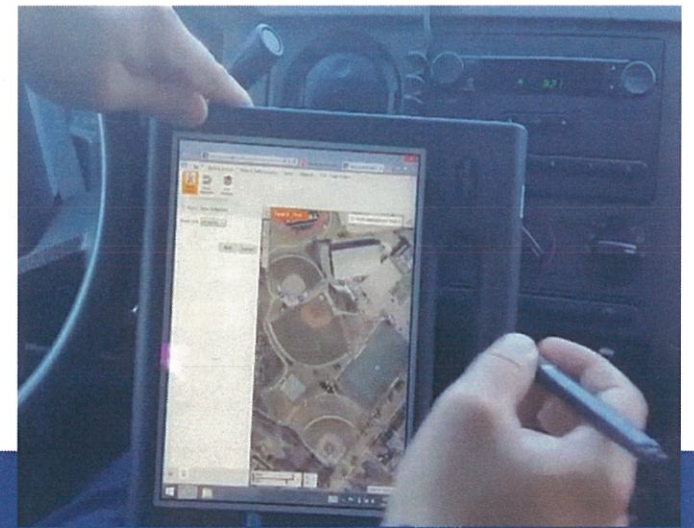
# Asset Management Systems

## Work Order Management Improvements



Work order improvements will:

- Speed up response to asset repair calls from citizens
- Streamline operations & maintenance work orders
- Improve tracking of asset life cycle costs and decision-making



# Asset Management Systems

## Asset Management Planning System



The AM Planning System will support asset life cycle decision-making and prioritization across all asset types.



# Update on the Corporate AM Strategy Recommendation

- That the Corporate AM Strategy update be received.



10

