

# + Public Information Session



## Canada Drive-America Avenue Bridge



# Agenda

- Overview
- History of Consultation
- Project Timelines
- Survey Results
- Bridge
- Traffic
- Landscape / Public Realm





# Overview



# Overview

- Construct a mid-block connection bridge over Highway 400 between America Avenue and Canada Drive



# Project Context

## Objectives of the Canada Drive – America Avenue Bridge:

- improve the multi-modal connectivity of the two communities on either side of Hwy 400 (Block 33 East and West), while still retaining the local character and pace
- provide residents with better access to amenities (schools, parks, recreational facilities, emergency and other public services, etc.)
- provide for more sustainable modes of travel ( cycling, pedestrian, transit) as the current configuration of Block 33 negates this
- complete the planned road network for the community



# History of Consultation



# History of Consultation

The Class EA process engaged community members who could be impacted by the project to:

- generate awareness of the project and provide opportunities for involvement throughout the planning process.
- facilitate constructive input from public and agency stakeholders at key points in the EA process, prior to decision-making.

EA consultation was completed and captured in the December 2013 Municipal Class Environmental Assessment.



# History of Consultation

Federal Agencies	Provincial Agencies
Fisheries and Oceans Canada	Ministry of Indigenous Affairs
Environment and Climate Change Canada	Ministry of Agriculture, Food and Rural Affairs
Indigenous Relations and Northern Affairs Canada	Ministry of Heritage, Sport, Tourism and Culture Industries
	Ministry of Municipal Affairs and Housing
	Ministry of the Environment, Conservation and Parks
	Ministry of Transportation
	Ministry of Natural Resources and Forestry





# History of Consultation

Municipal Agencies and Authorities	
Corporate Services	York Regional Police
Infrastructure Planning	York Region Emergency Medical Services
Transportation Planning	City of Vaughan Fire and Rescue Service
Community Planning	Toronto and Region Conservation Authority
Transportation and Works	York Region District School Board
York Region Transit/VIVA	York Region Catholic District School Board
Ontario Provincial Police	Student Transportation Services of York Region

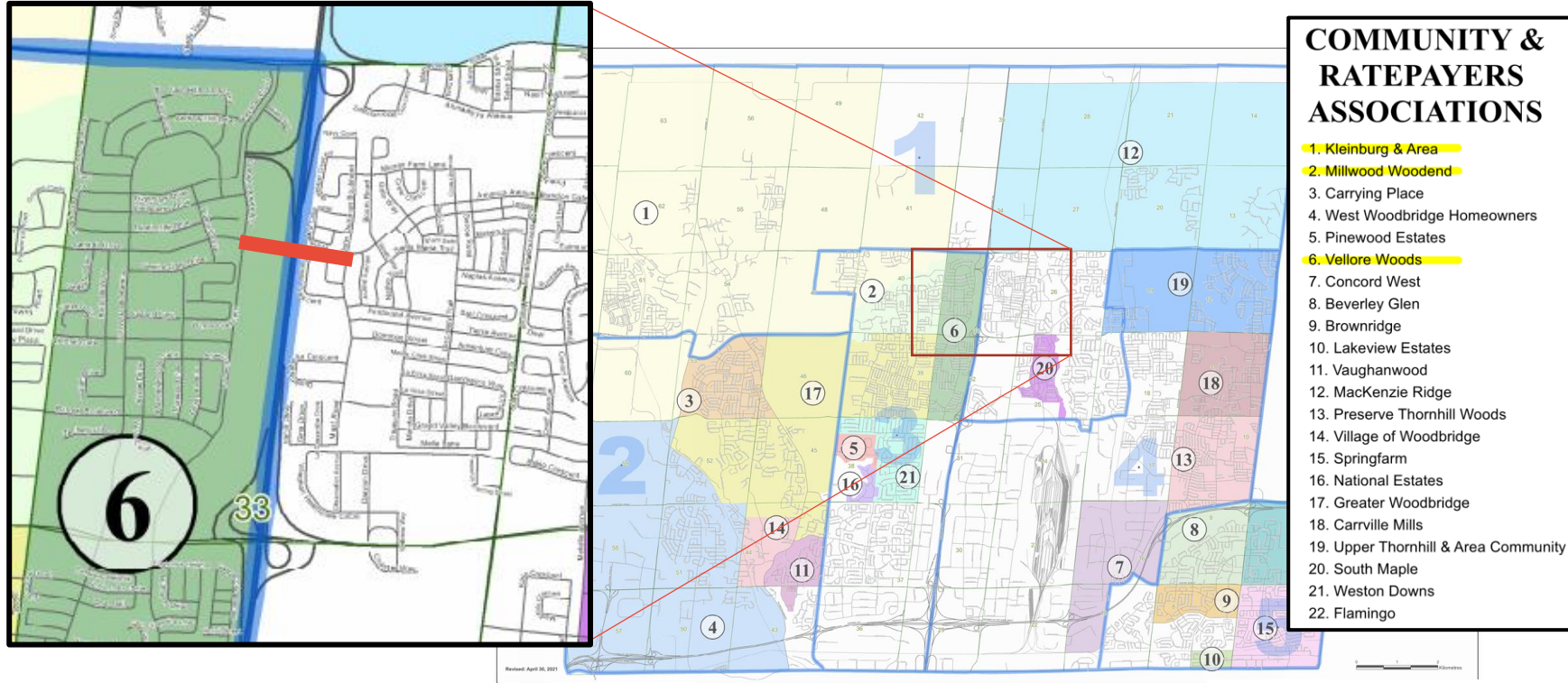


# History of Consultation

Community Groups	
Rimwood Estates Homeowners Association	Vellore Woods Ratepayers' Association
Vaughanwood Estates Homeowners Association	Maple Village Ratepayers'
Millwood Woodend Ratepayers' Association	
Canada's Wonderland	
Ahmadiyya Muslim Community Canada	
Kleinburg and Area Ratepayers' Association	
Maple Sherwood Ratepayers' Association	



# History of Consultation



# History of Consultation

- City of Vaughan conducted a Canada Drive - America Avenue Bridge Survey in April 2021.
  - 120 responses!
  - Responses will be discussed later in the presentation.



HATCH



FORREC



A.W. HOOKER®  
QUANTITY SURVEYORS



# Project Timelines



# Project Timelines

Project Milestone	Anticipated Date
Preliminary Design for Roadway and Bridge Final Design for Landscape and Public Realm	November 2021
Design-Build Tender Release	December 2021
Design-Build Tender Close	February 2022
Project Award / Design and Construction Commences	April 2022
Construction Completion	Late 2023





# Survey Results



# Q: Any other key elements?



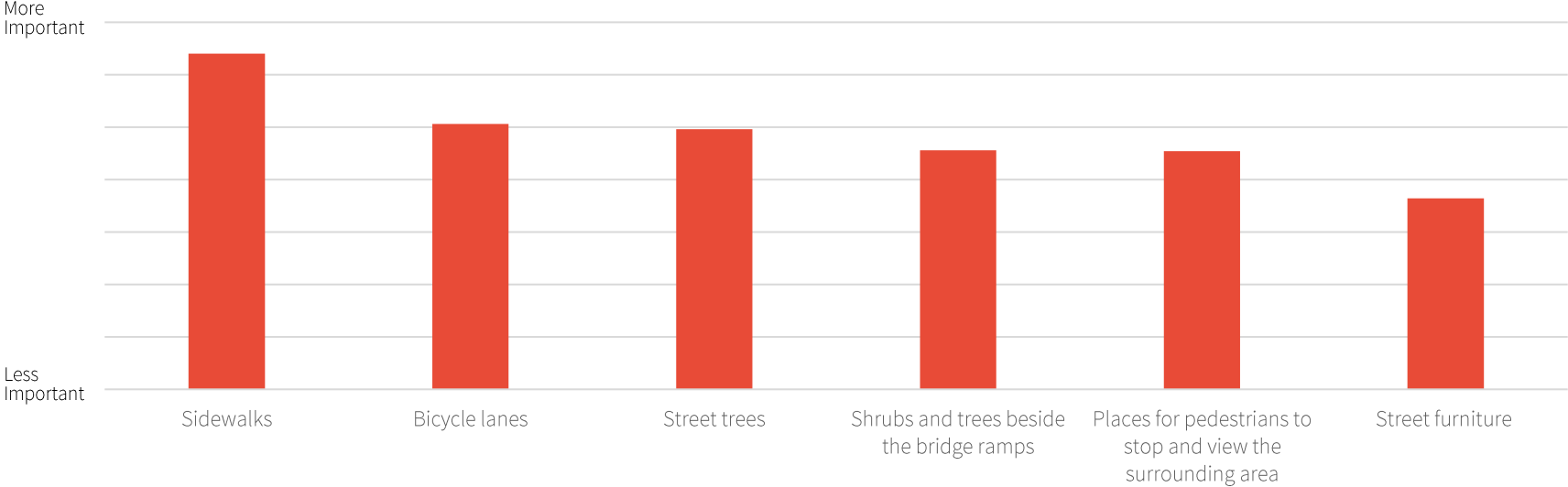


# Q: Other important features



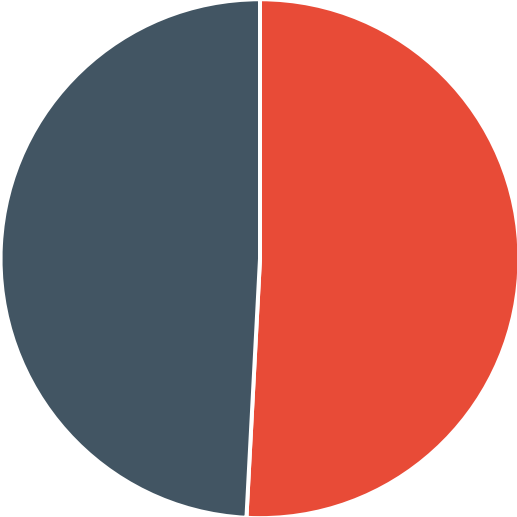
# Survey Results

What elements of the proposed bridge are the most important to you?



# Survey Results

Would you prefer a sloped embankment, or a terraced embankment?

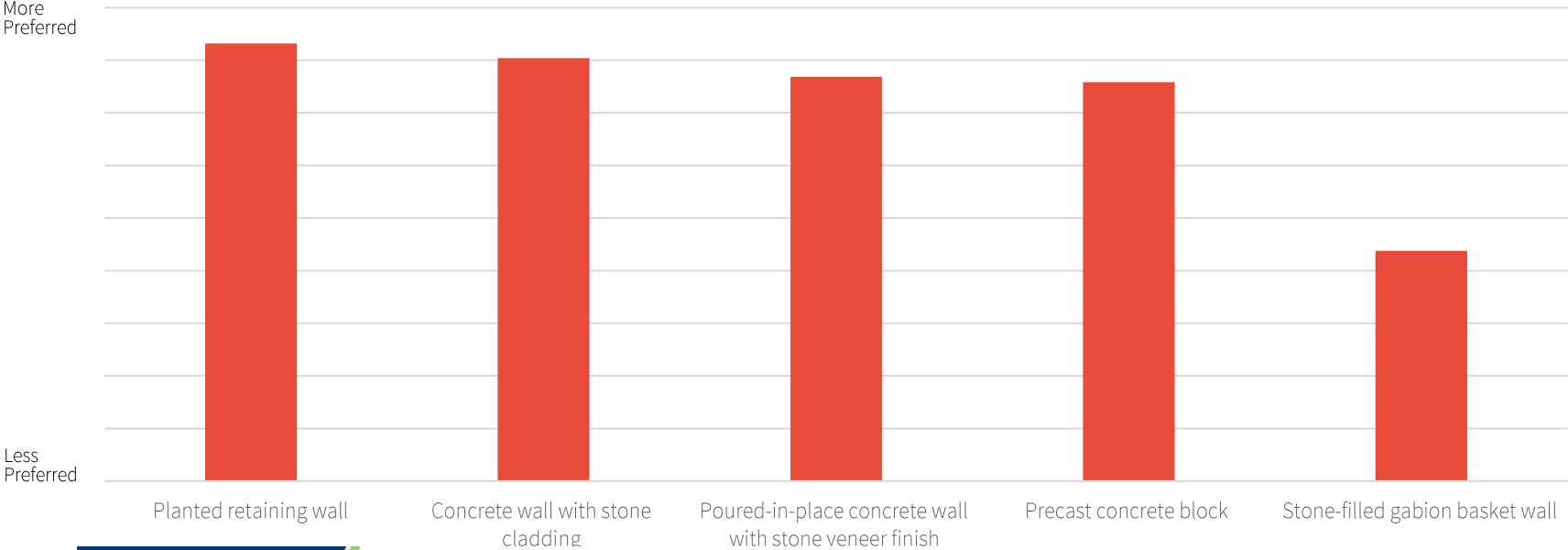


■ Sloped embankment   ■ Terraced embankment



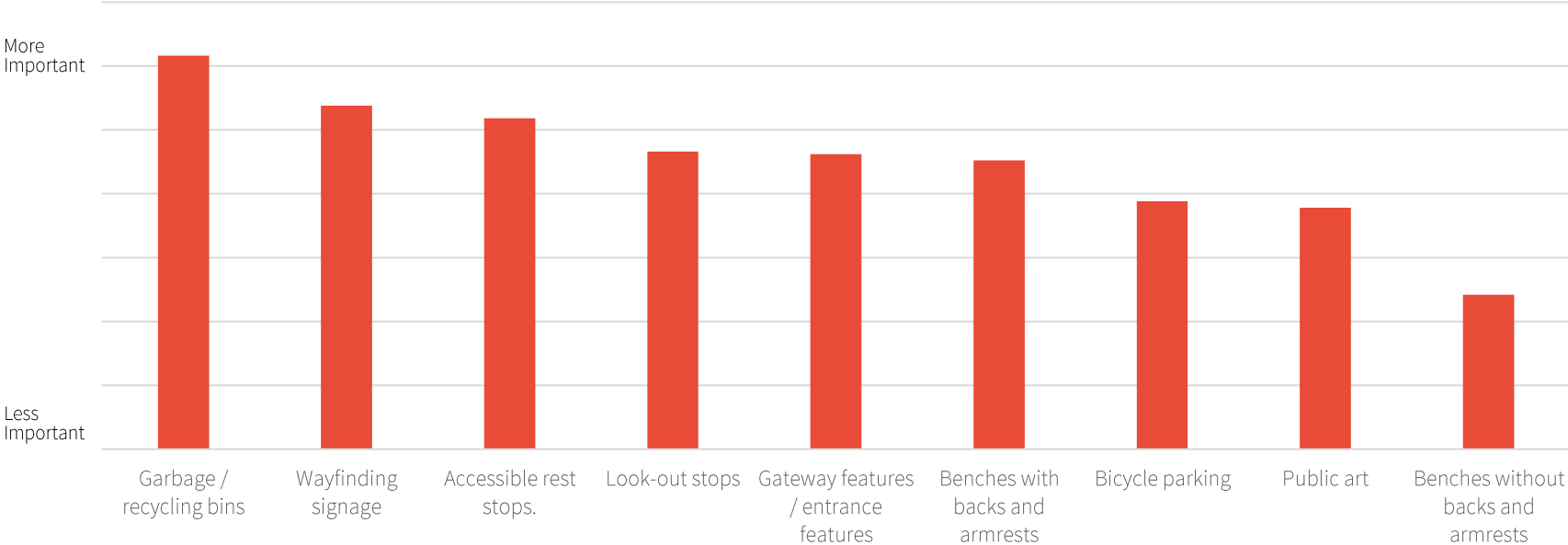
# Survey Results

What types of finish would you prefer for retaining walls adjacent to residential streets?



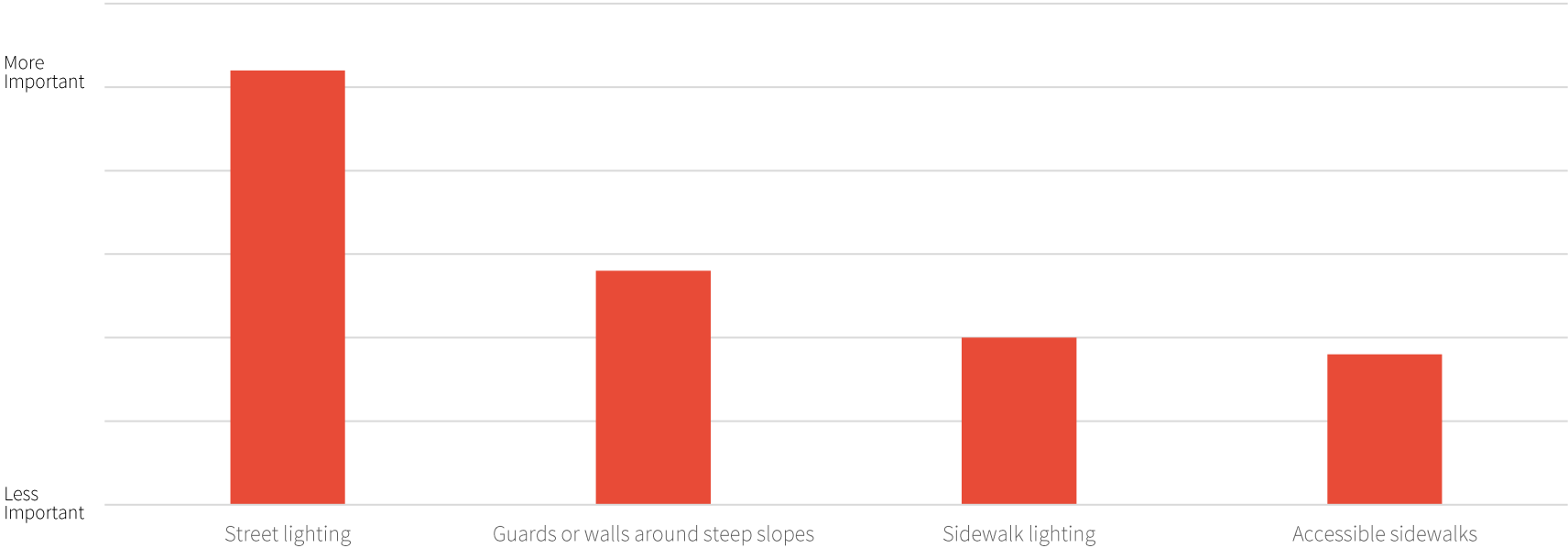
# Survey Results

How important are the following street furniture options to you?



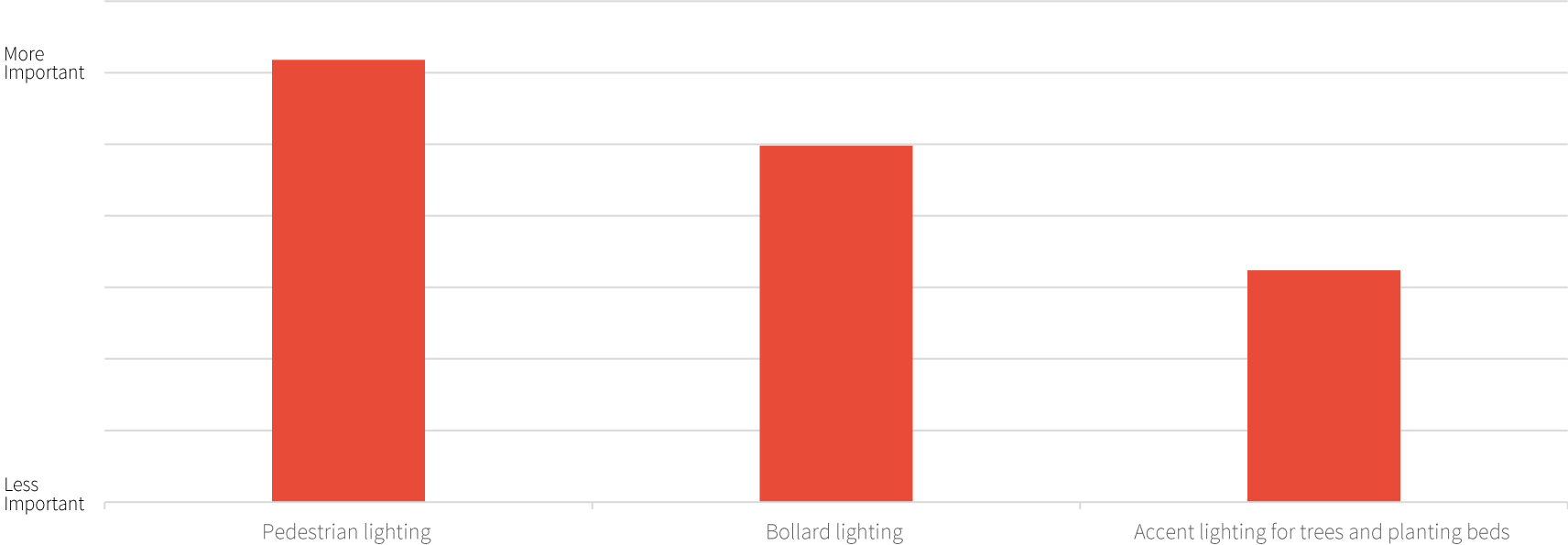
# Survey Results

Which of the following measures of safety and well-being are important to you?



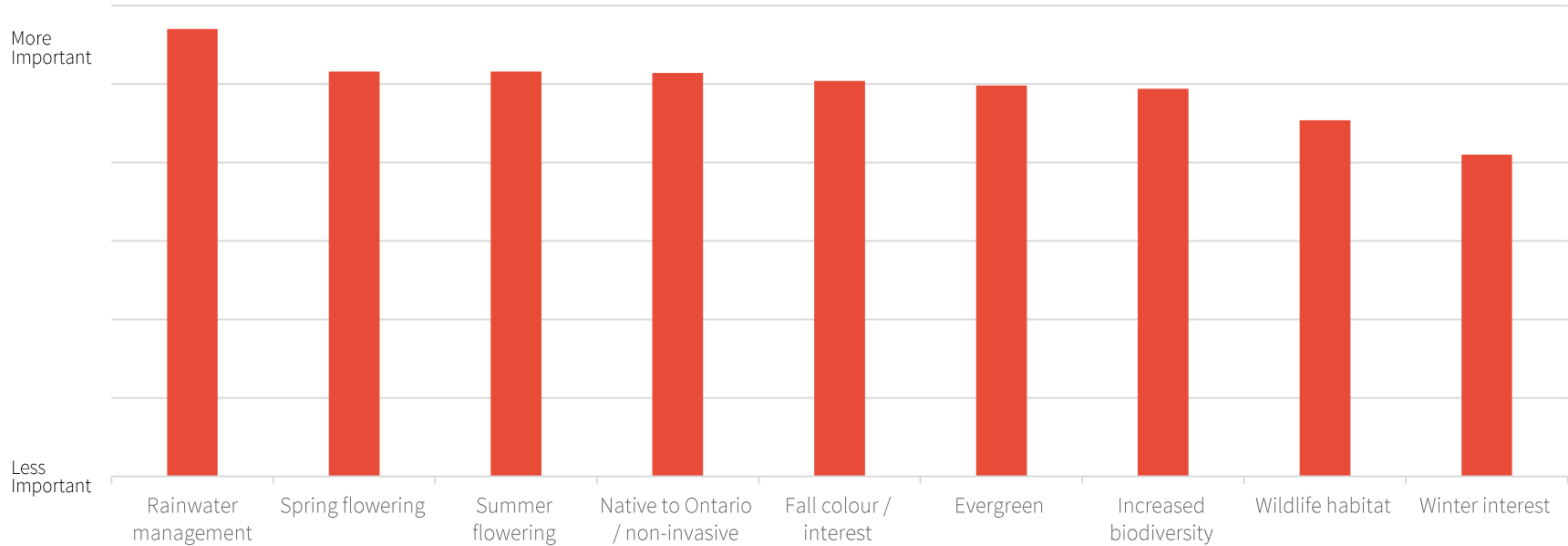
# Survey Results

Which of the following types of lighting are important to include in the street design?



# Survey Results

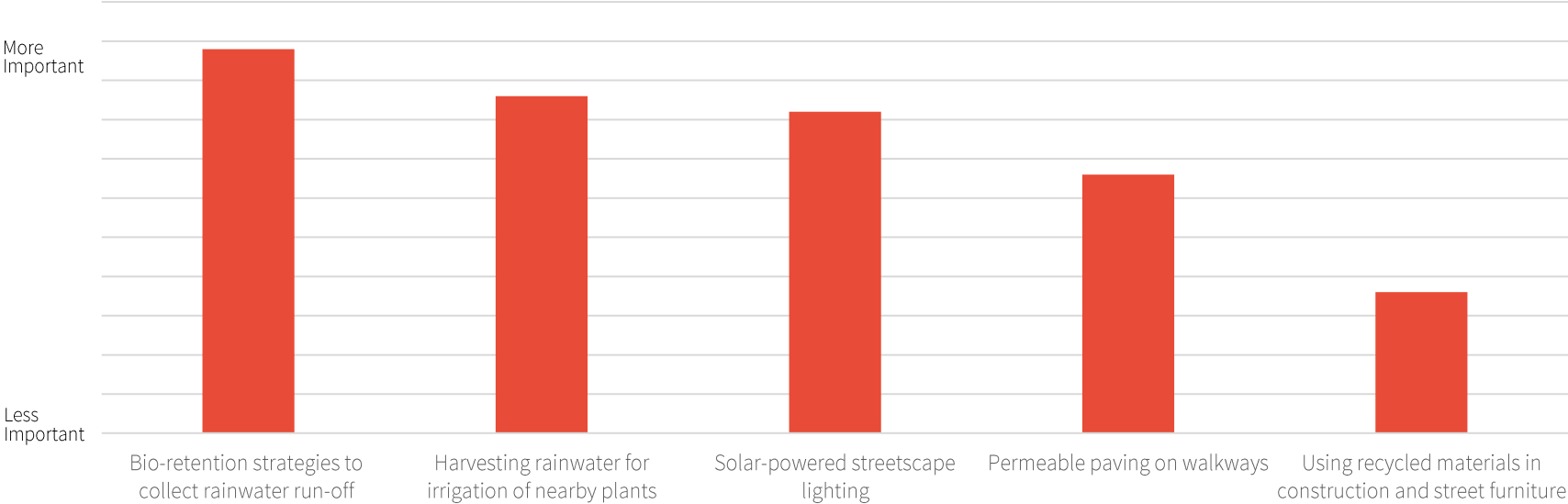
How important are the following plant characteristics to you?





# Survey Results

Which of the following sustainability initiatives would you like to have included in the design?



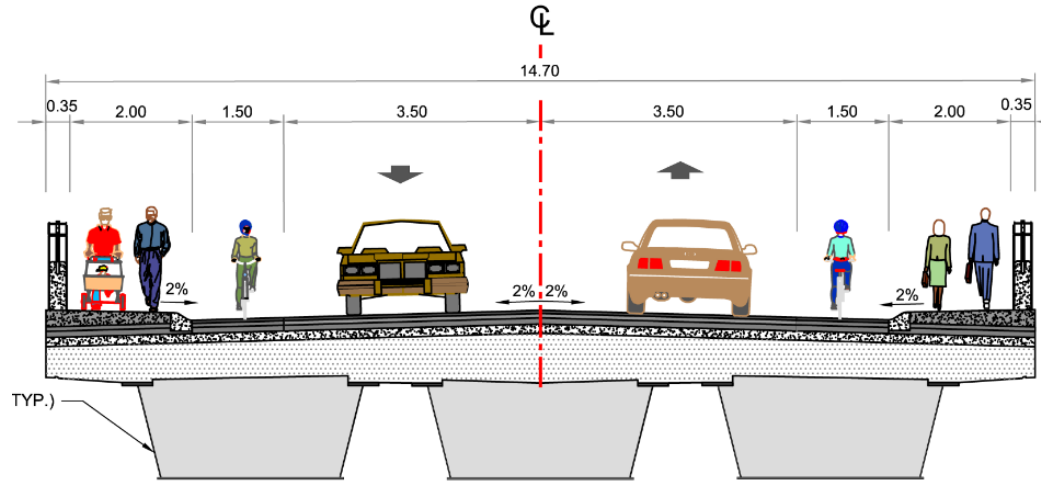


# Bridge

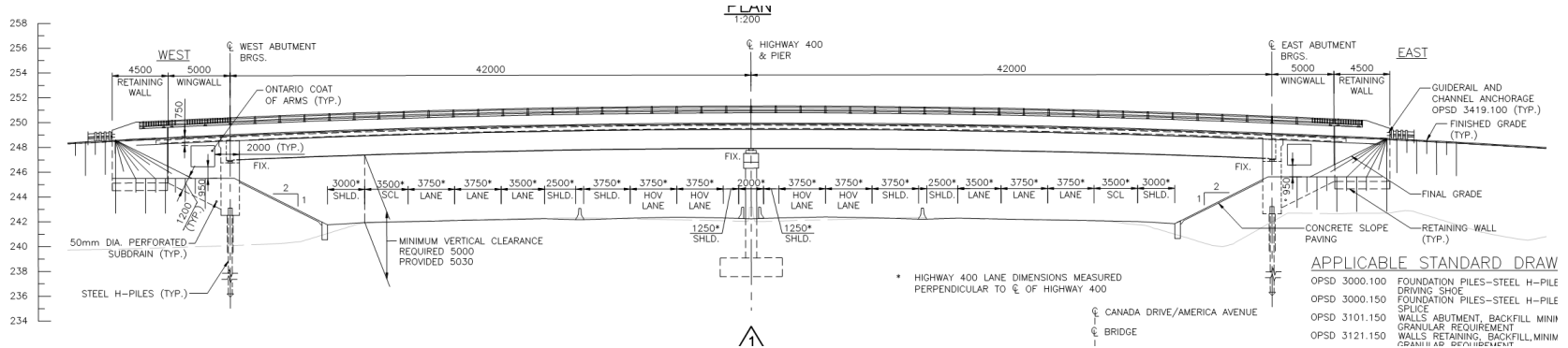


# Community Bridge Design

Two lane roadway, including sidewalks and bicycle lanes on a mostly straight road.



# Community Bridge Design





# Landscape / Public Realm



# Community Bridge Overall Layout



# Overall Layout: Key Design Elements

- Design intent to integrate the bridge with existing community, focus on enhancing pedestrian and cyclist experience
- Alternating, double row of street trees frame and shade sidewalk
- Pedestrian-scale lighting along sidewalk, accent lighting for rest stops
- Different planting strategies on slopes reflecting adjacent context
- A mix of native/indigenous trees, shrubs, perennials and grasses
- Hardy, drought and salt tolerant plantings (where applicable) with low maintenance requirements



HATCH



FORREC



J.D. BARNES  
LAND INFORMATION SPECIALISTS

A.W. HOOKER®  
QUANTITY SURVEYORS

# Planting Strategy

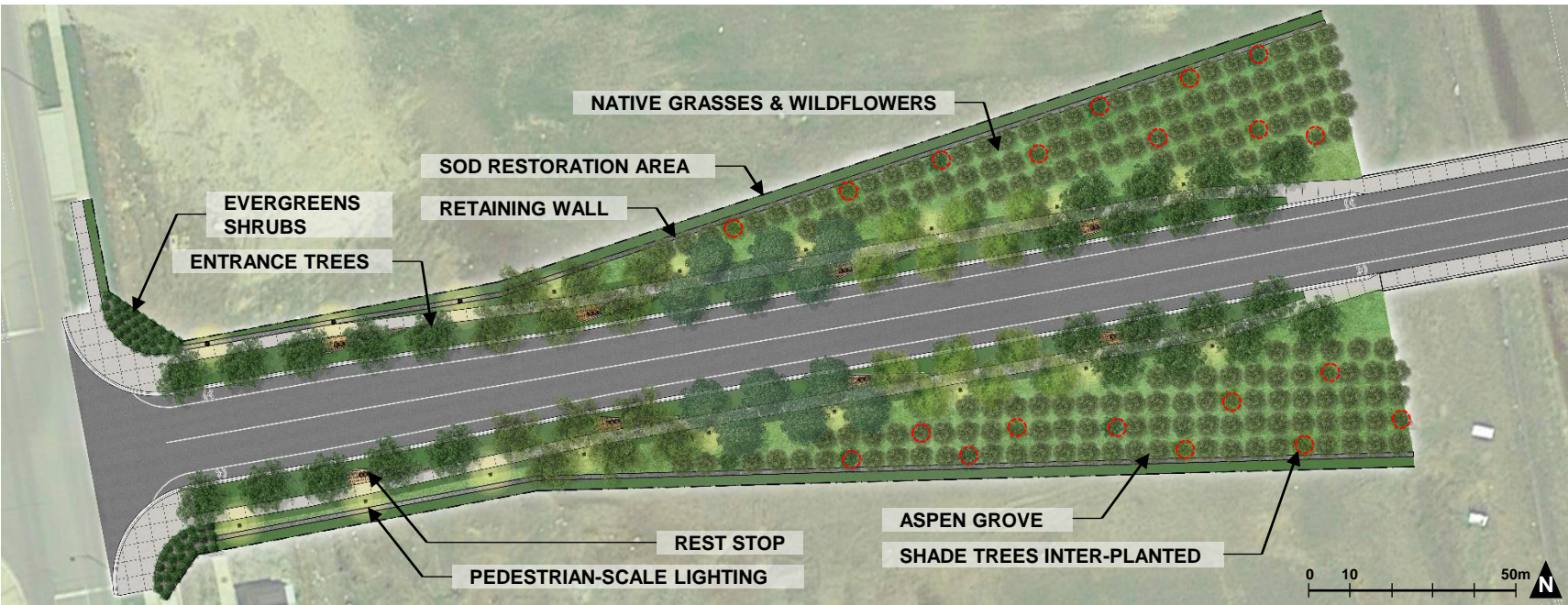




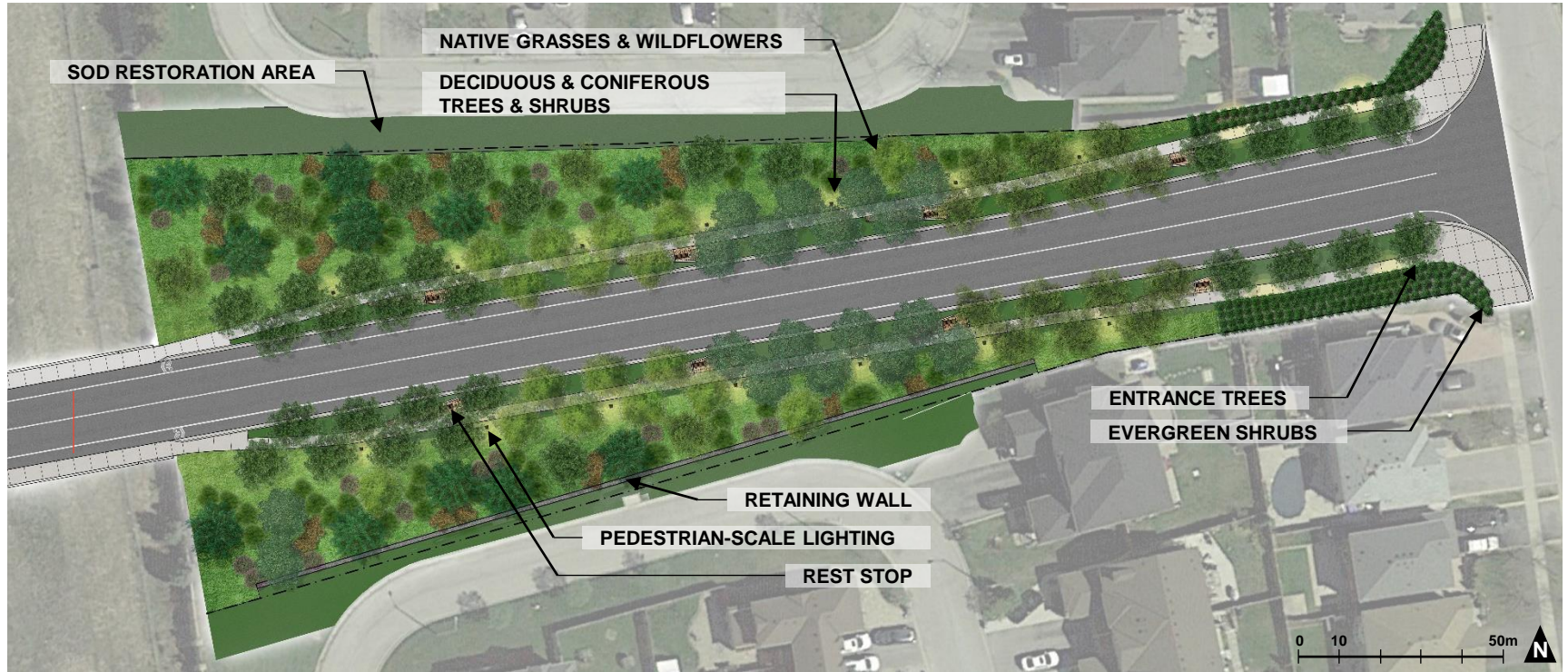
# Planting Strategy

- Entrance feature areas (both sides):
  - eight (Canada Drive) / ten (America Avenue) ornamental native shade trees
  - evergreen shrub plantings
- Boulevard amenity zone (both sides):
  - alternating double row of large native shade trees
- West (Canada Drive) slopes:
  - groves of trembling aspen with native shade trees inter-planted
  - low-growing ‘meadow’ of native grasses and wildflowers
- East (America Avenue) slopes:
  - strategic groupings of native deciduous and coniferous trees and shrubs
  - low-growing ‘meadow’ of native grasses and wildflowers

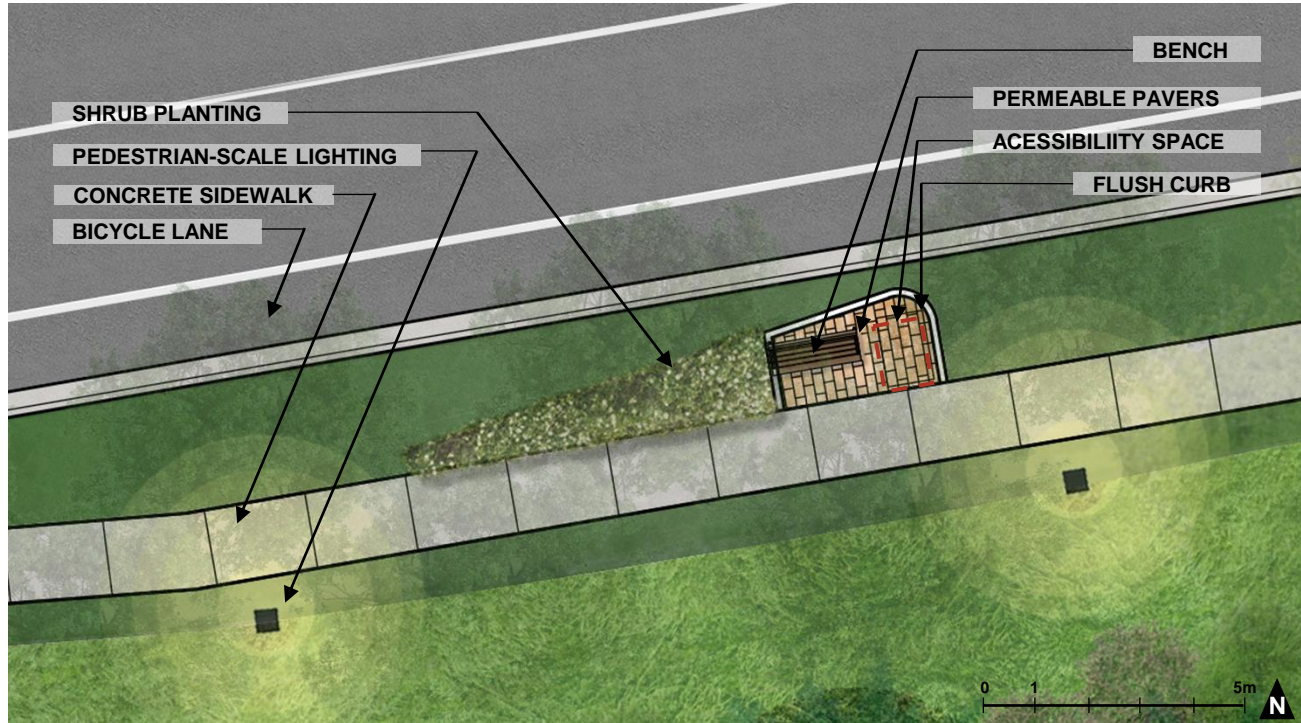
# Canada Drive (West of Bridge)



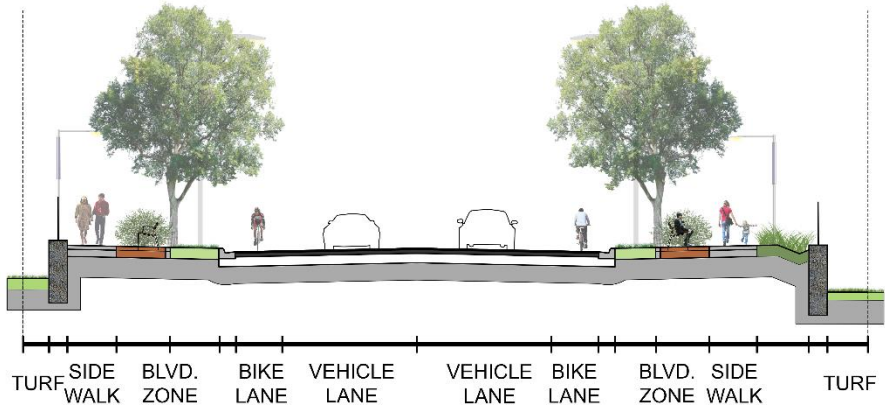
# America Avenue (East of Bridge)



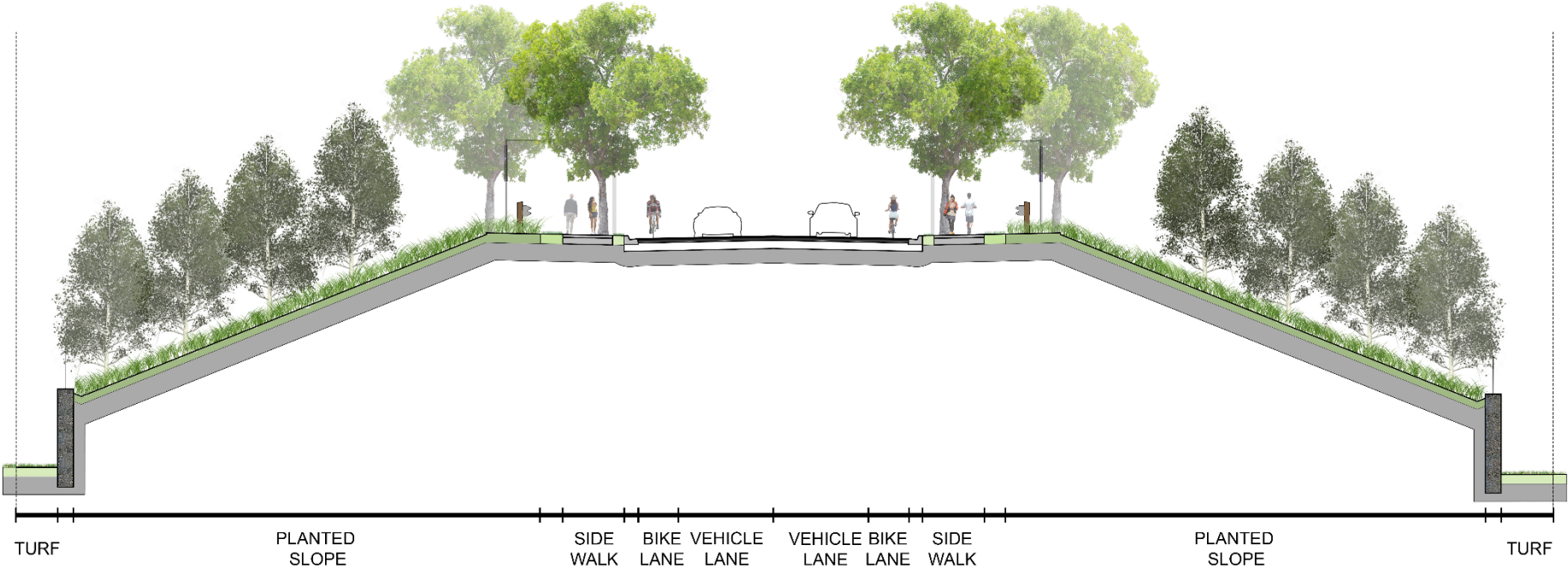
# Rest Stop Layout



# Canada Drive (West of Bridge)



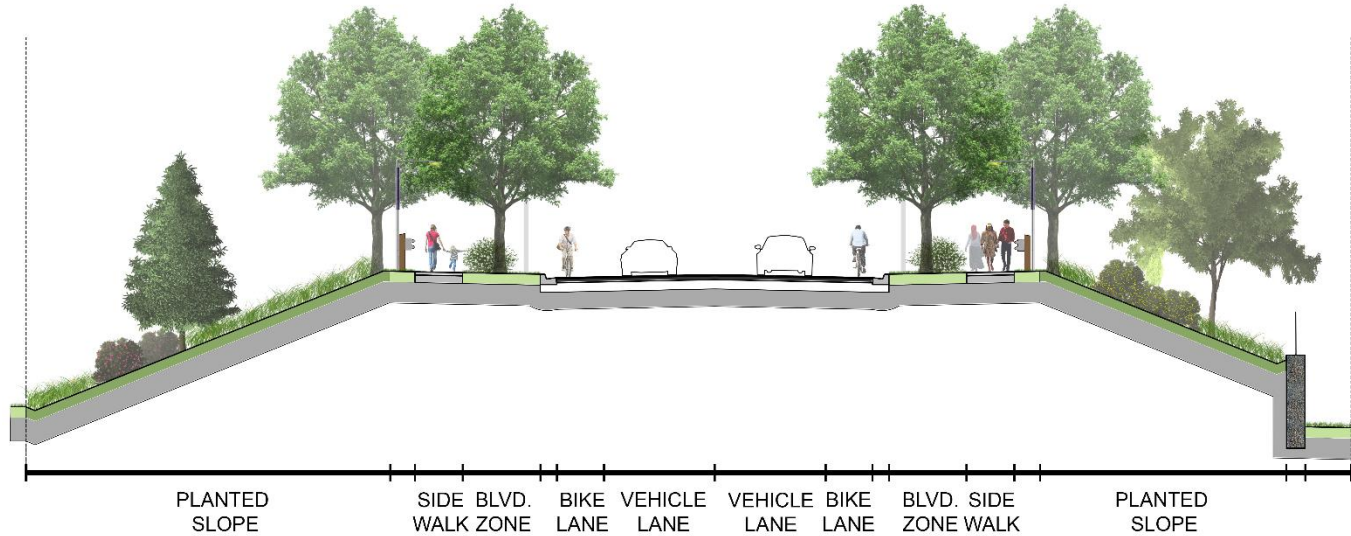
# Canada Drive (West of Bridge)



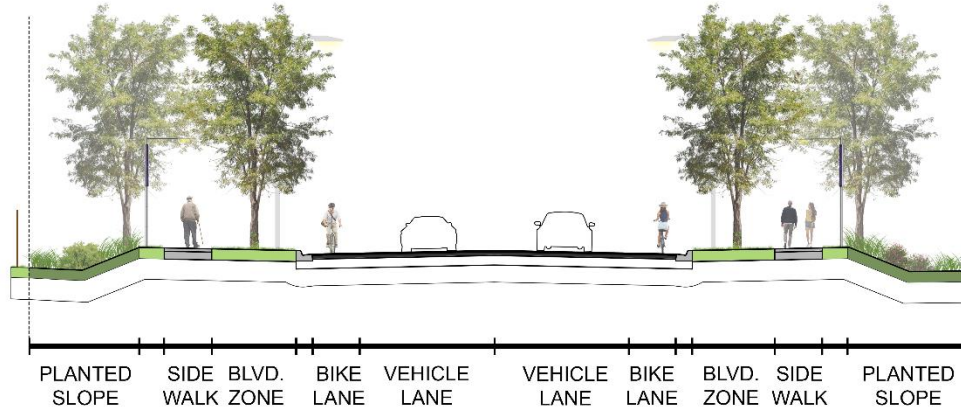
TURF      PLANTED SLOPE      SIDE WALK      BIKE LANE      VEHICLE LANE      VEHICLE LANE      BIKE LANE      SIDE WALK      PLANTED SLOPE      TURF



# America Avenue (East of Bridge)

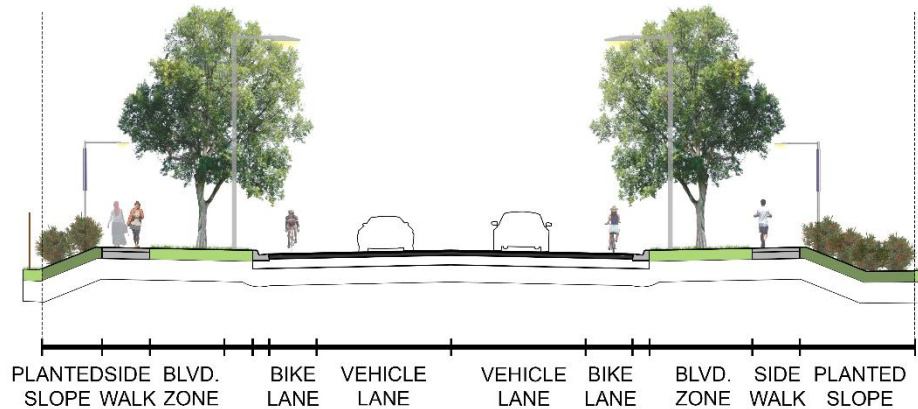


# America Avenue (East of Bridge)





# America Avenue (East of Bridge)





# Traffic



# Traffic

A Transportation and Traffic Analysis Report by AECOM was prepared in 2010 and updated in 2013 as part of the EA process.

key findings:

- CDAA Bridge anticipated to carry local traffic
- CDAA Bridge not anticipated to attract additional truck traffic
- CDAA Bridge volumes:
  - 330 vehicles in the AM peak hour (7 to 9 am)
  - 485 vehicles in the PM peak hour (4 to 6 pm)
- all-way stop controlled intersection proposed at America Avenue and John Deisman Boulevard
- signalized intersection proposed at Canada Drive and Cityview Boulevard





# Thank You



Copyright © Hatch 2021. All Rights Reserved.