


**This is a transformative plan  
that will create a paradigm shift**



An aerial photograph of a rural landscape. In the foreground, a winding river flows through a valley, surrounded by dense green trees. To the right, a small pond is visible. The middle ground shows a mix of residential buildings, open fields, and more trees. The background is a vast, hazy expanse of land, suggesting a large area of rural expansion or sprawl.

# Limiting sprawl...

this is the smallest urban  
expansion in the Vaughan's  
history and allows Vaughan  
to maintain its Countryside.

An aerial photograph of a city, likely Chicago, showing a mix of urban development and green spaces. A prominent feature is a winding river, possibly the Chicago River, which flows through the city. The river is bordered by a multi-lane highway on one side and a park area with a baseball field on the other. In the center, there are several large, modern buildings, including a prominent one with a blue roof. The surrounding area is filled with residential houses and smaller commercial buildings. The overall scene depicts a dense urban environment with integrated green infrastructure.

# Encouraging Intensification...

45% of new development will be on underutilized sites in built-up areas, making better use of infrastructure.



# Protecting existing communities...

for a range of low-rise housing  
types.



# Building new mixed-use communities...

where people can  
live, work, shop  
and recreate.



Providing a  
variety of  
housing  
options...

that meet the needs of  
Vaughan citizens.



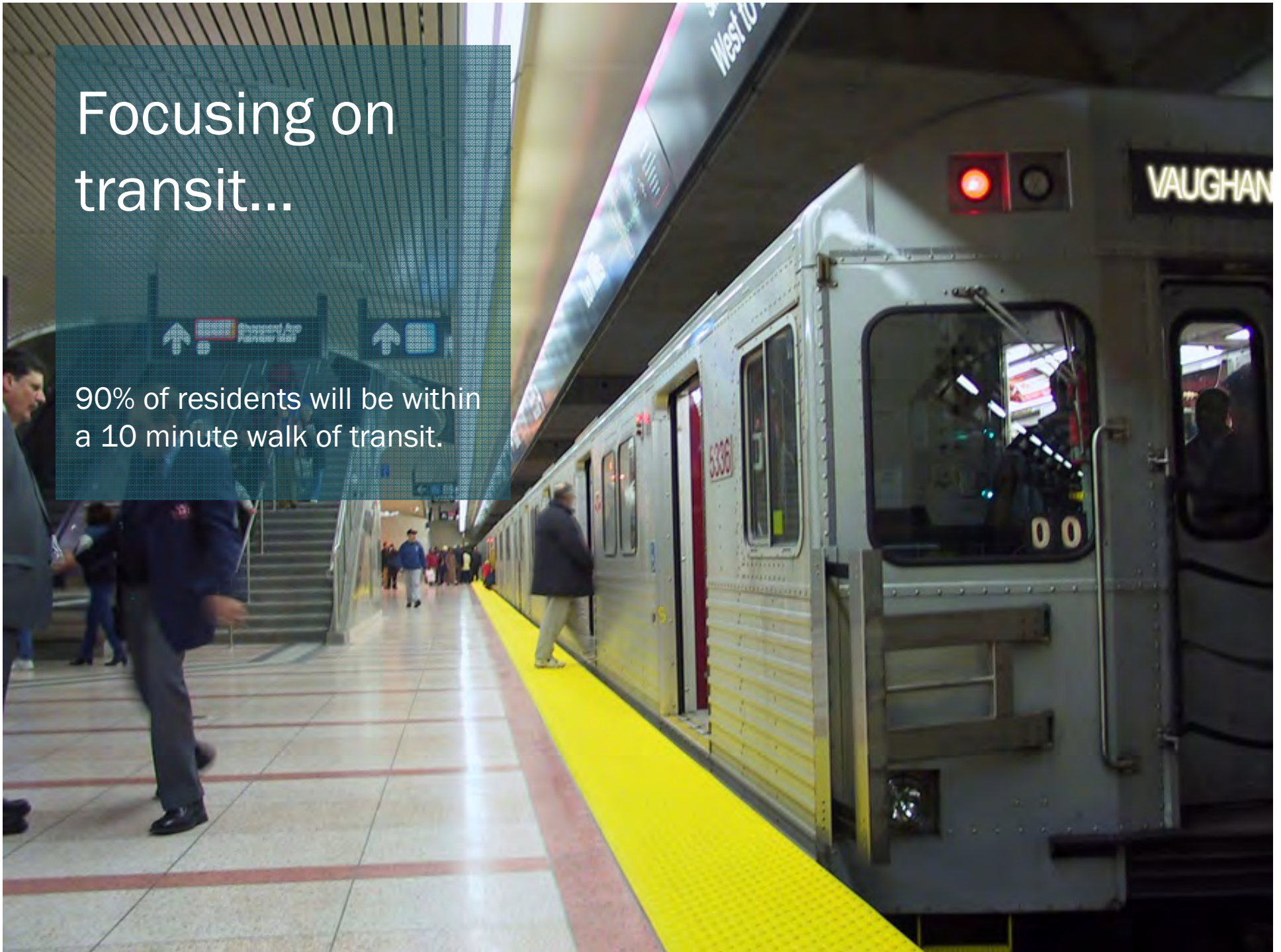
300  
Marching Way

# Creating jobs and economic growth...

through one of the largest  
supplied of Employment Land  
in the Great Golden Horseshoe.

# Focusing on transit...

90% of residents will be within a 10 minute walk of transit.







Supporting  
walking and  
cycling...

through better design and  
municipal infrastructure.



Ensure great  
design...

through civic spaces, public  
art, a built form policies and  
public review.



Requiring  
green and  
sustainable  
buildings...

that incorporate a variety of  
environmental features.



# Encouraging local food production...

through protected  
agricultural lands and urban  
gardens.

# Meeting community and social service needs...

through new parks, community  
facilities and better access to  
social services.





**A Plan for Tomorrow...  
and for Future Generations.**



Thank you!