

# PURPLEVILLE PARK

Final design concept



# Overall park concept

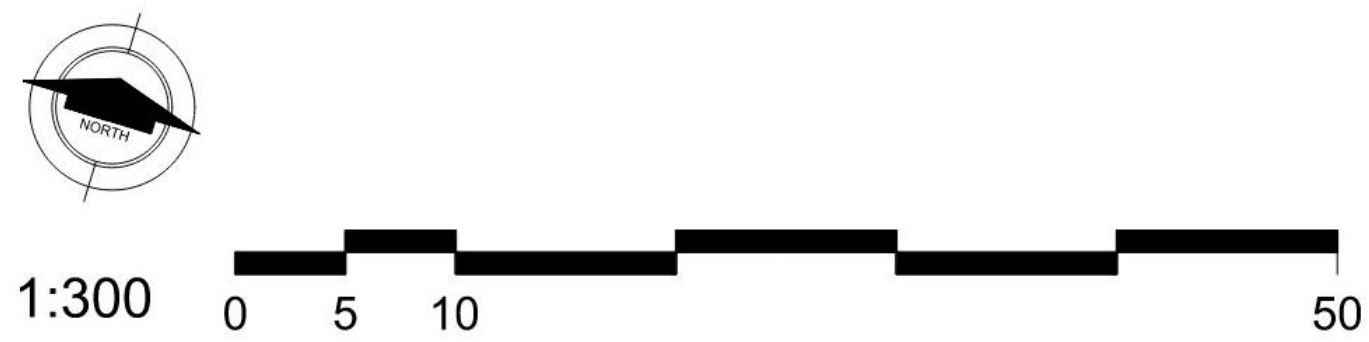


## PROGRAM ELEMENTS

- 1 PUMP TRACK
- 2 HALF BASKETBALL COURT
- 3 TENNIS COURT
- 4 PICKLEBALL COURTS (2)
- 5 JUNIOR AND SENIOR PLAYGROUND
- 6 PLAZA WITH SEATING AND SHADE
- 7 SOCCER FIELD (35 METRES BY 50 METRES)
- 8 NATURALIZED PLANTINGS
- 9 SEATING AREA

## LEGEND

- PROPERTY LINE
- WOOD BOARD PRIVACY FENCE
- - - CHAINLINK FENCE
- - - X DECORATIVE WOOD FENCE
- - - SPORTS COURT FENCE
- SOD
- NATURALIZED AREA
- WOOD FIBRE SAFETY SURFACING
- CONCRETE PAVING
- ASPHALT PAVING
- EXISTING TREES
- DECIDUOUS TREES
- CONIFEROUS TREES
- SHADE TABLE
- LIGHT POST
- BENCH
- ... BIKE PARKING



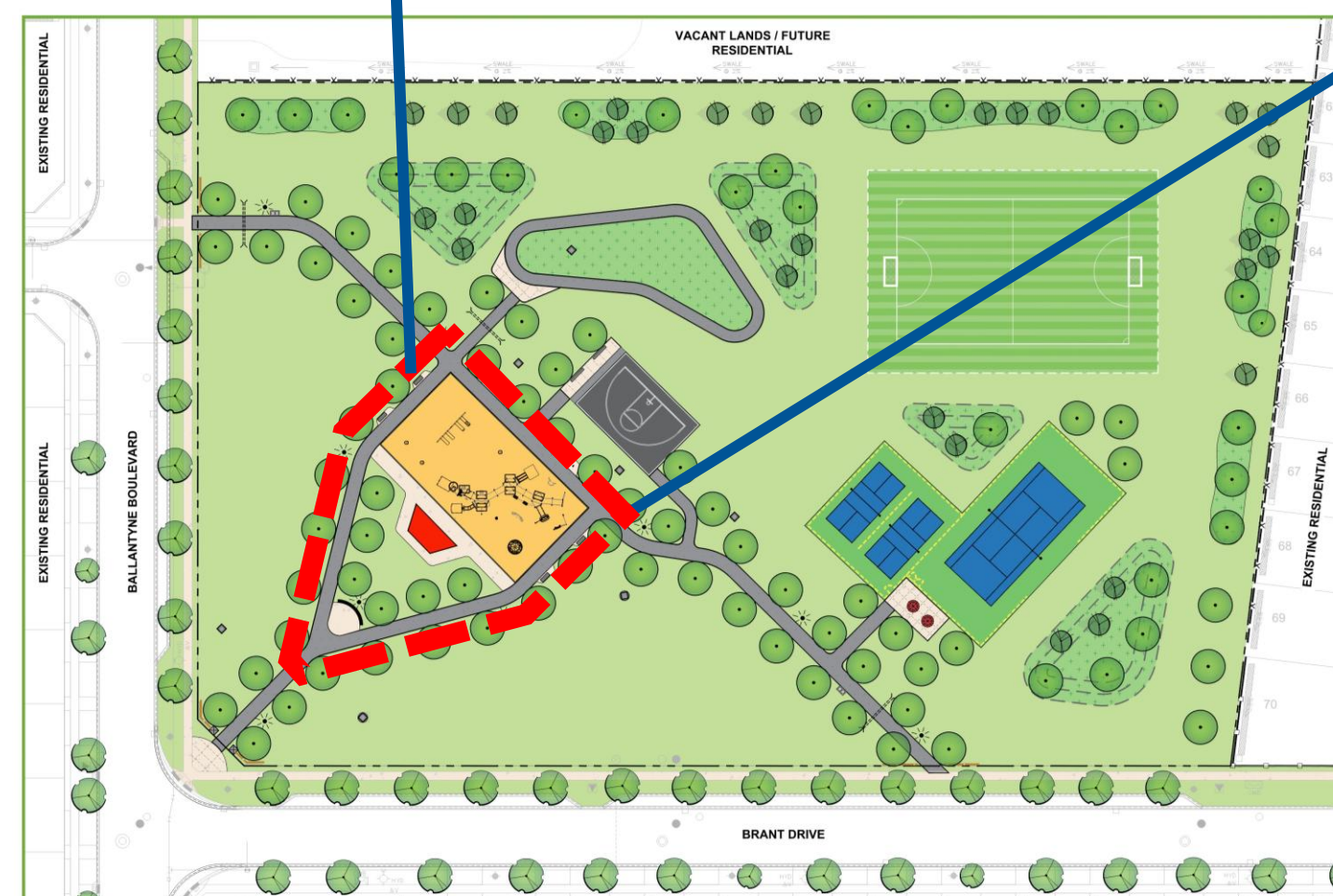
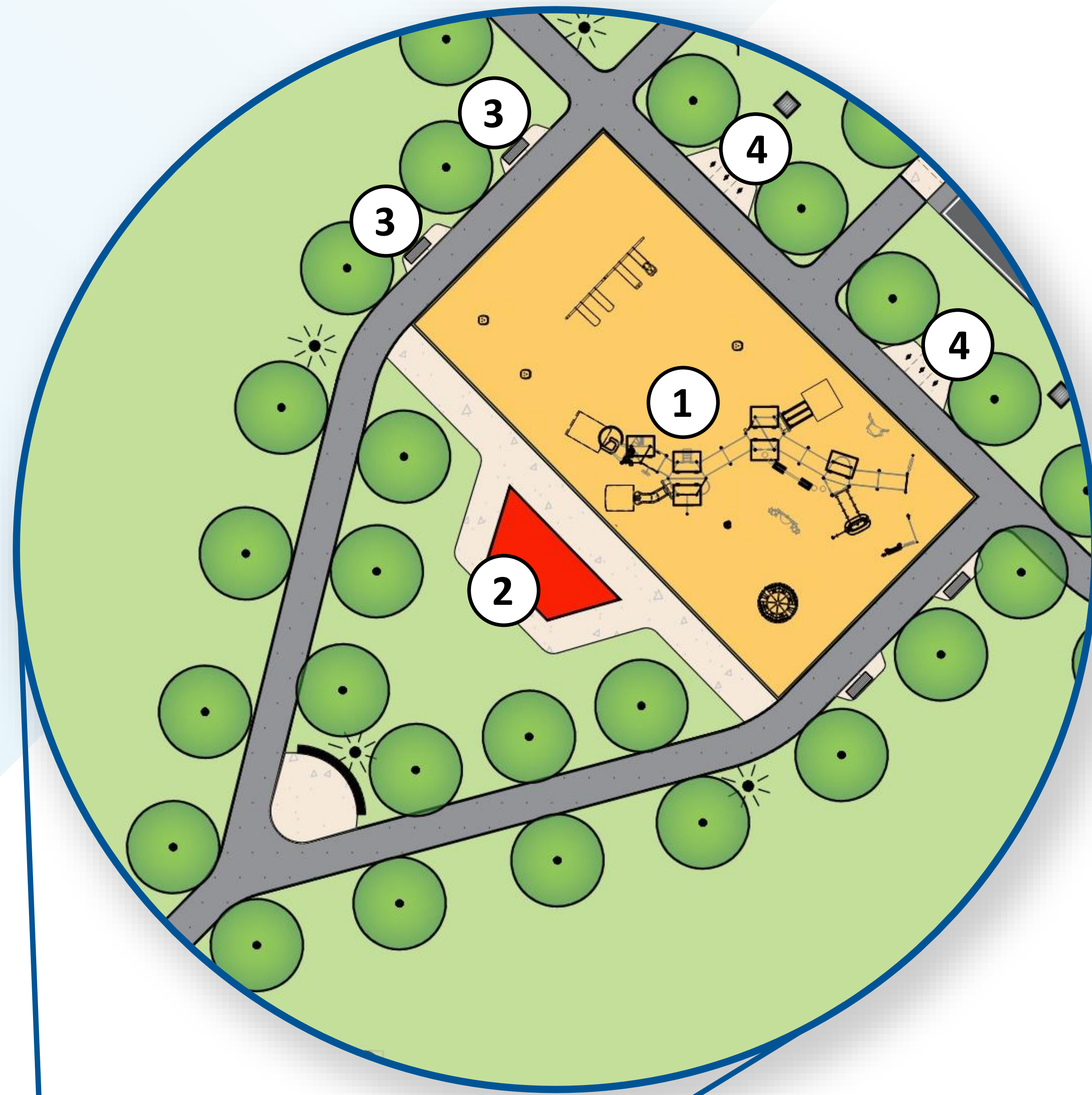
# Park perspectives



# Park perspectives



# Park components – activity hub



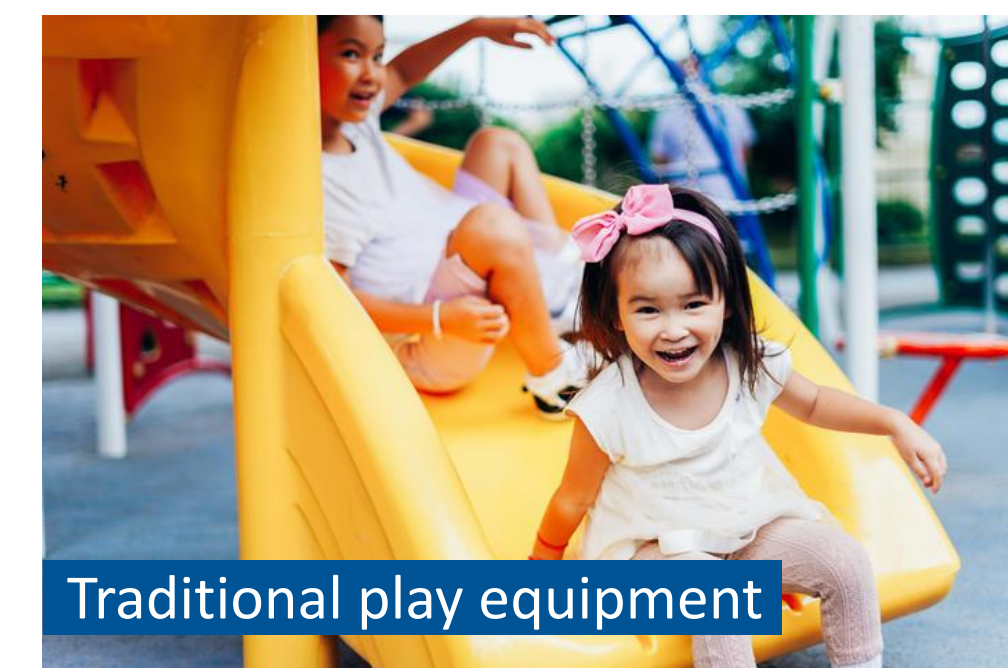
- ① Junior and senior playground
- ② Shade structure with two tables and seating
- ③ Benches
- ④ Bike parking



Traditional play equipment



Traditional play equipment



Traditional play equipment



Shade structure with tables



Traditional play equipment



Tables with seating

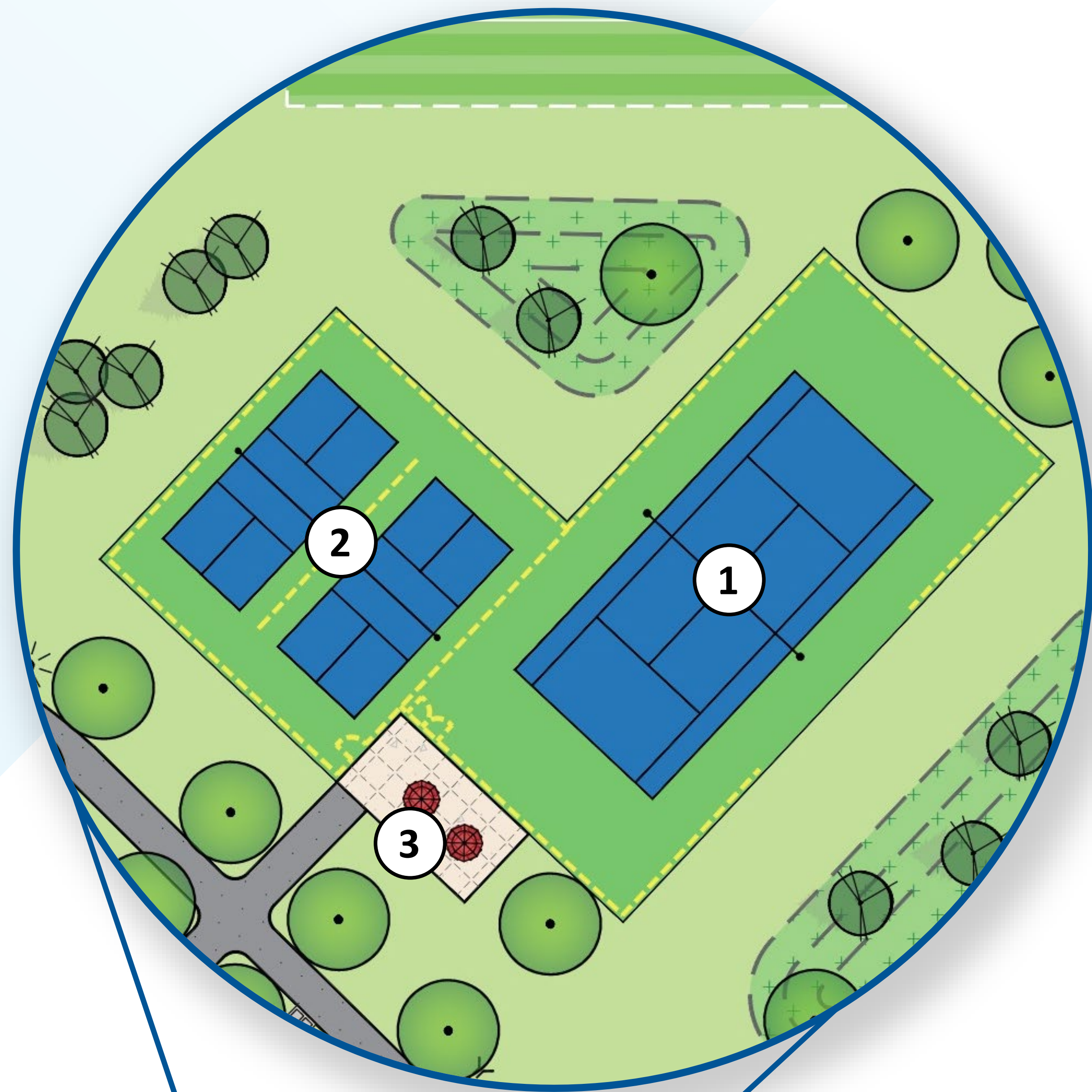


Benches

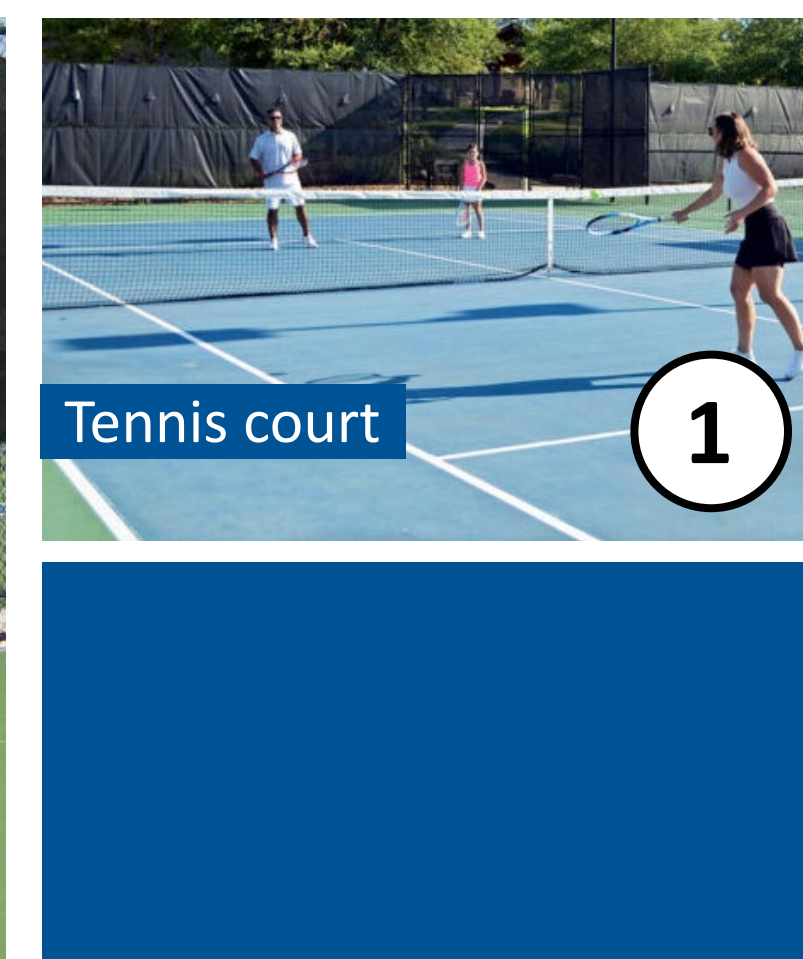
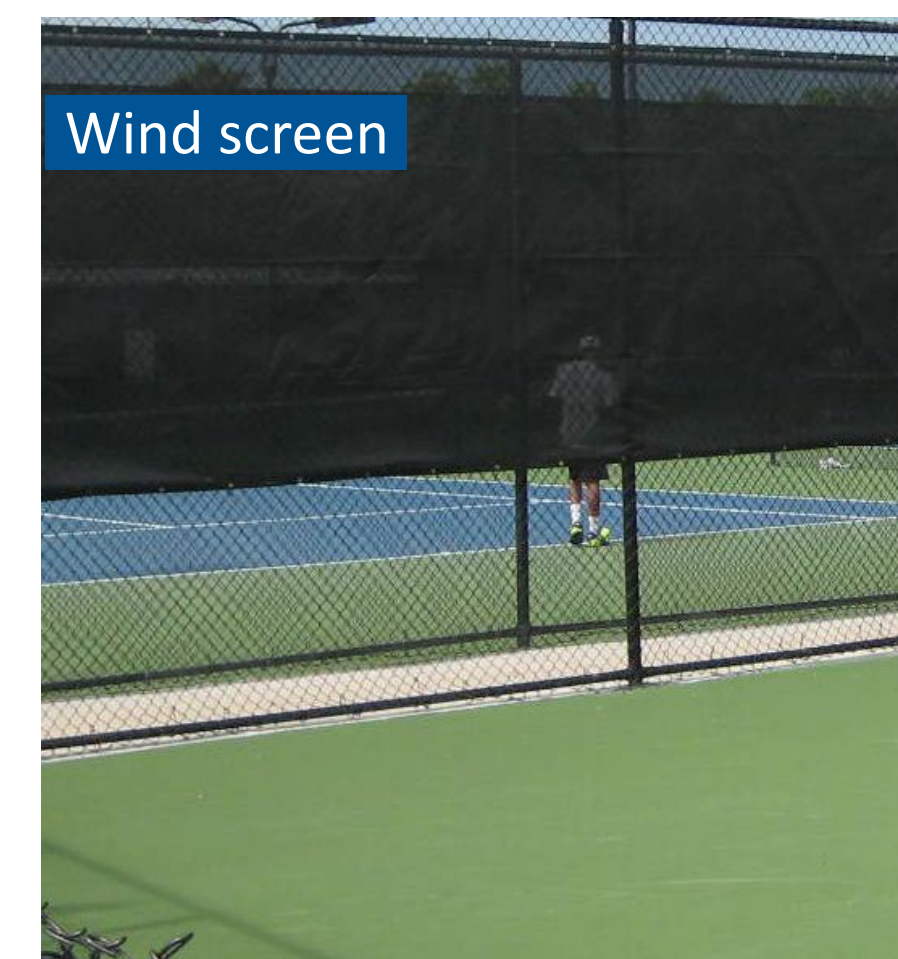


Bike parking

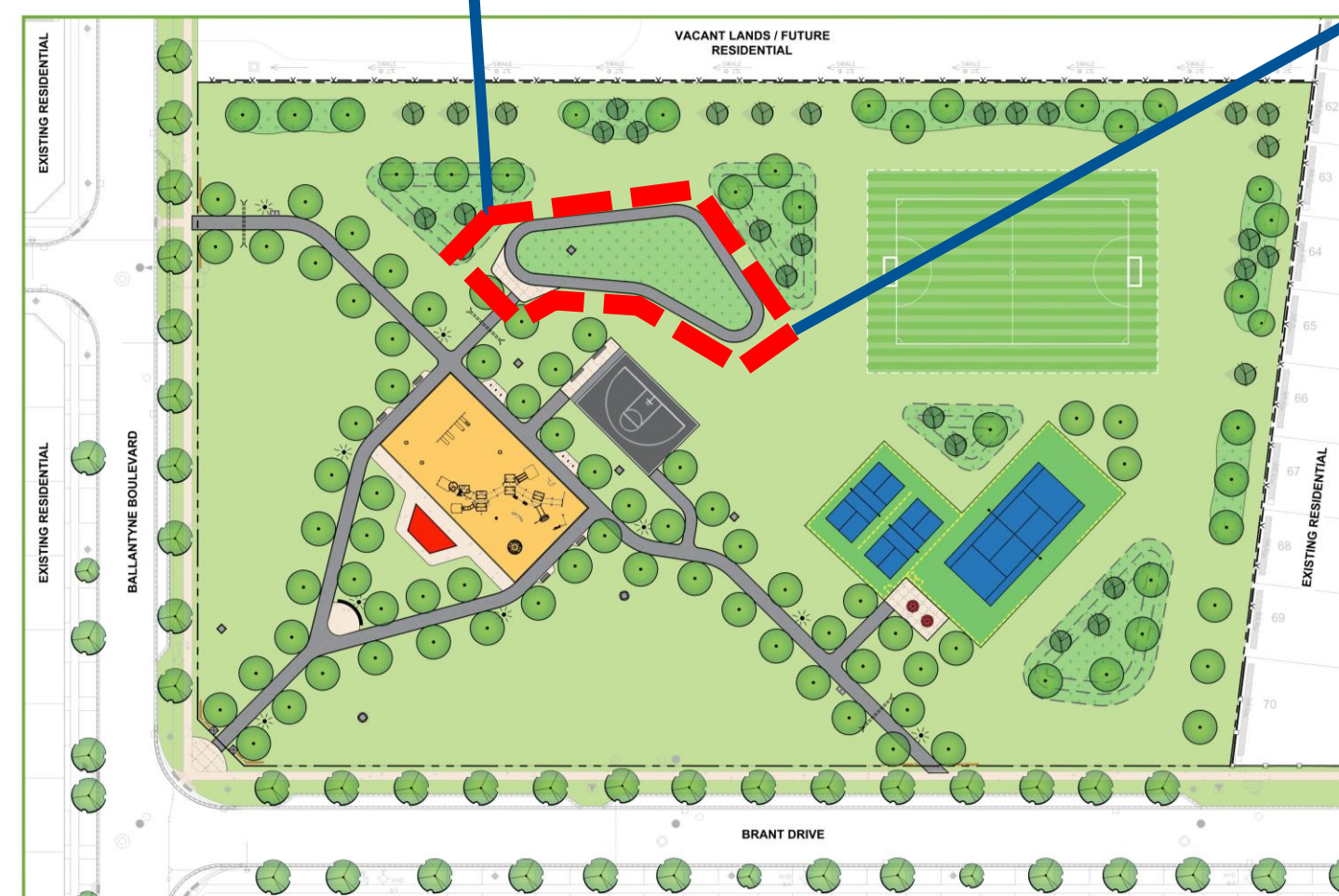
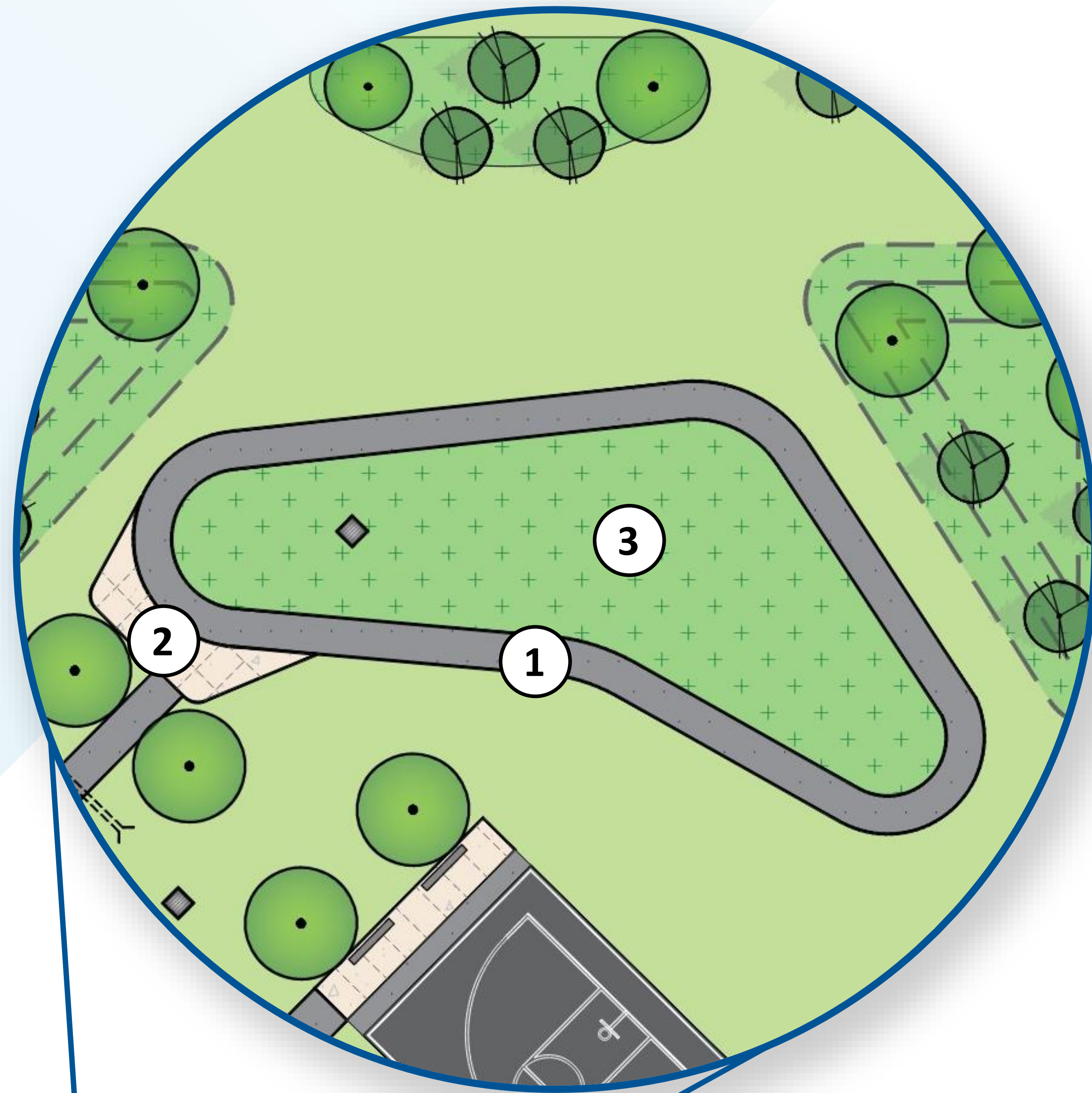
# Park components – court hub



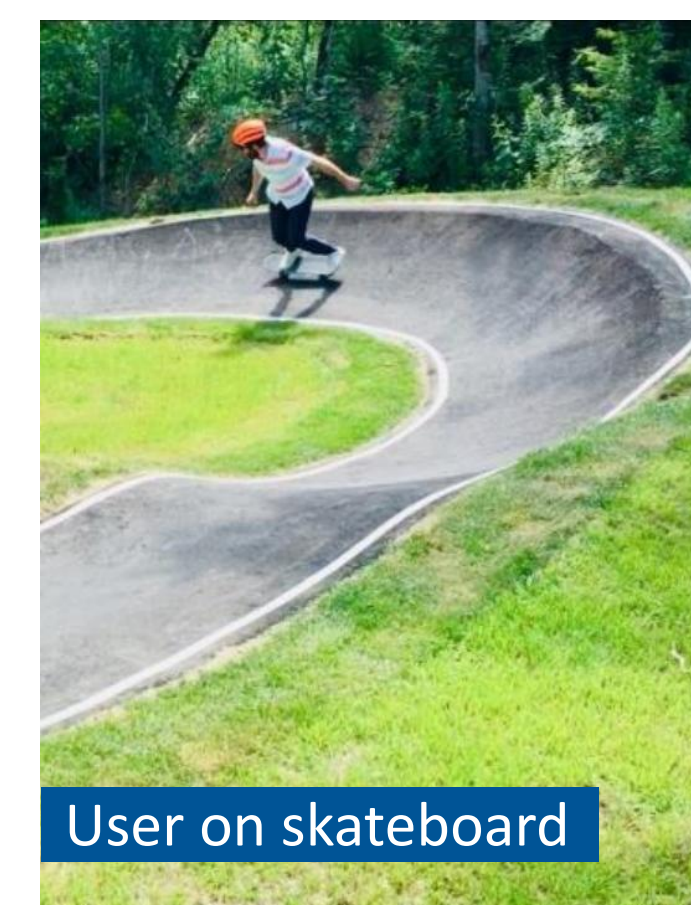
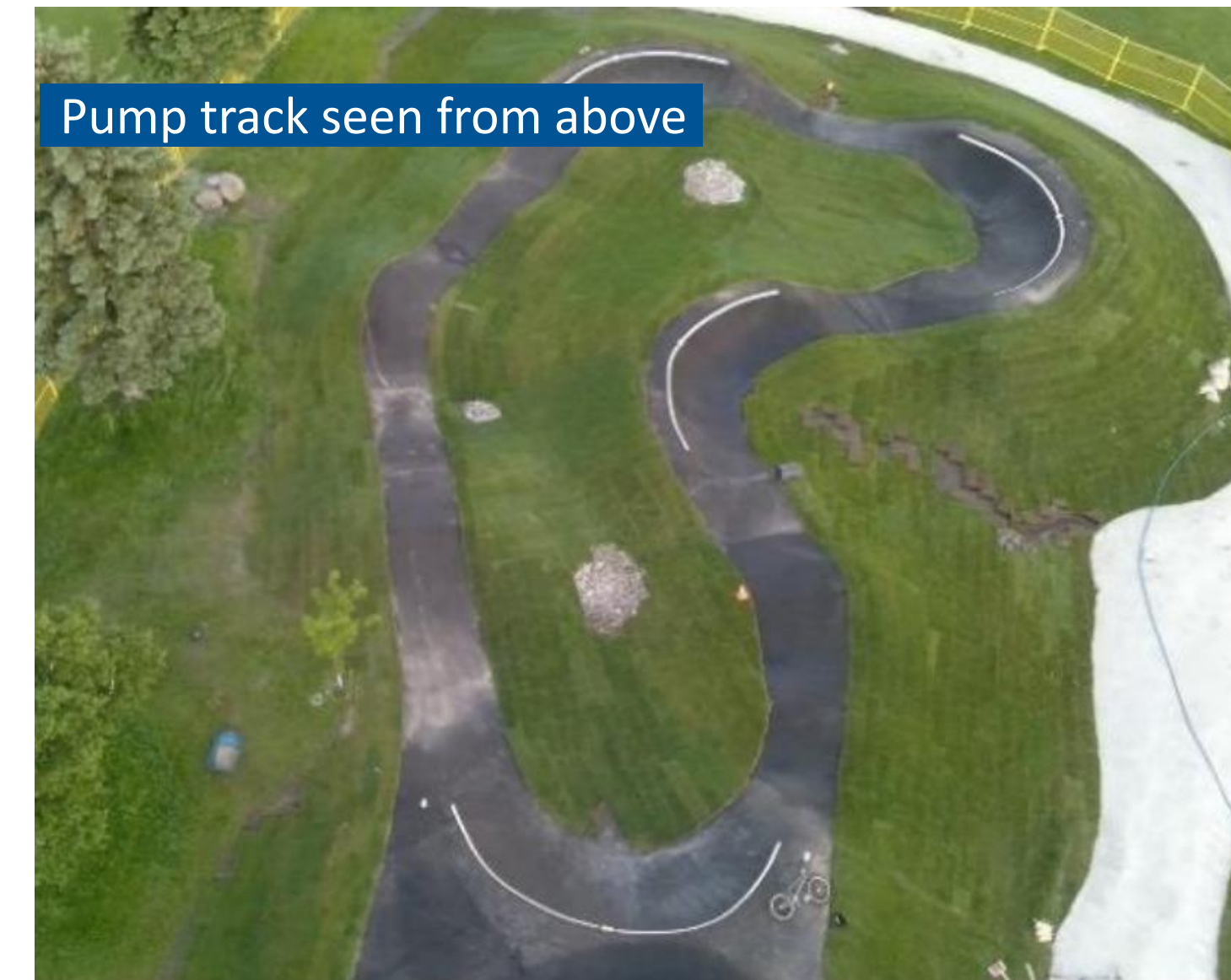
- ① Tennis court
- ② Pickleball courts
- ③ Shaded seating



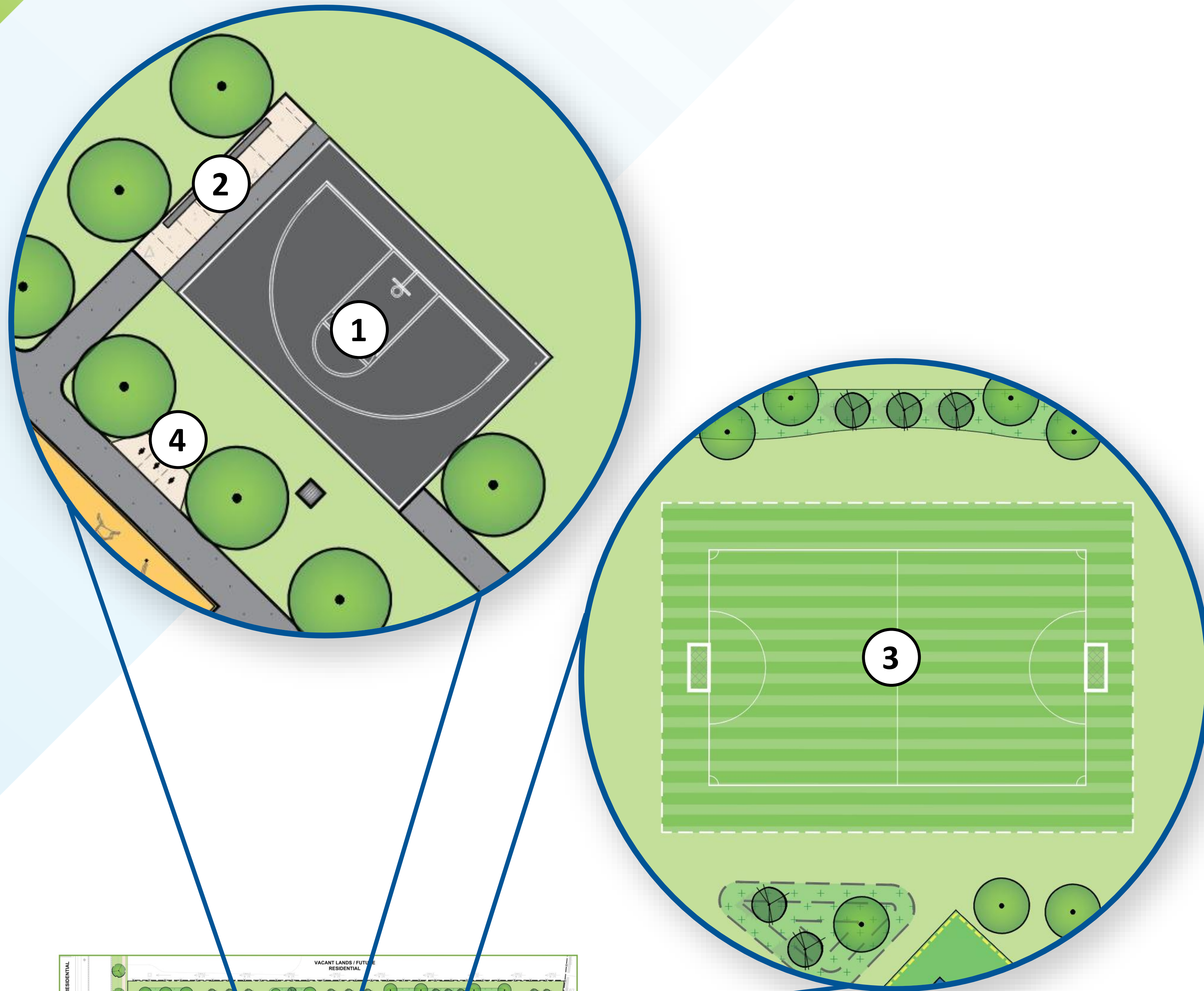
# Park components – pump track



- 1 Pump track
- 2 Pump track entrance
- 3 Naturalized planting



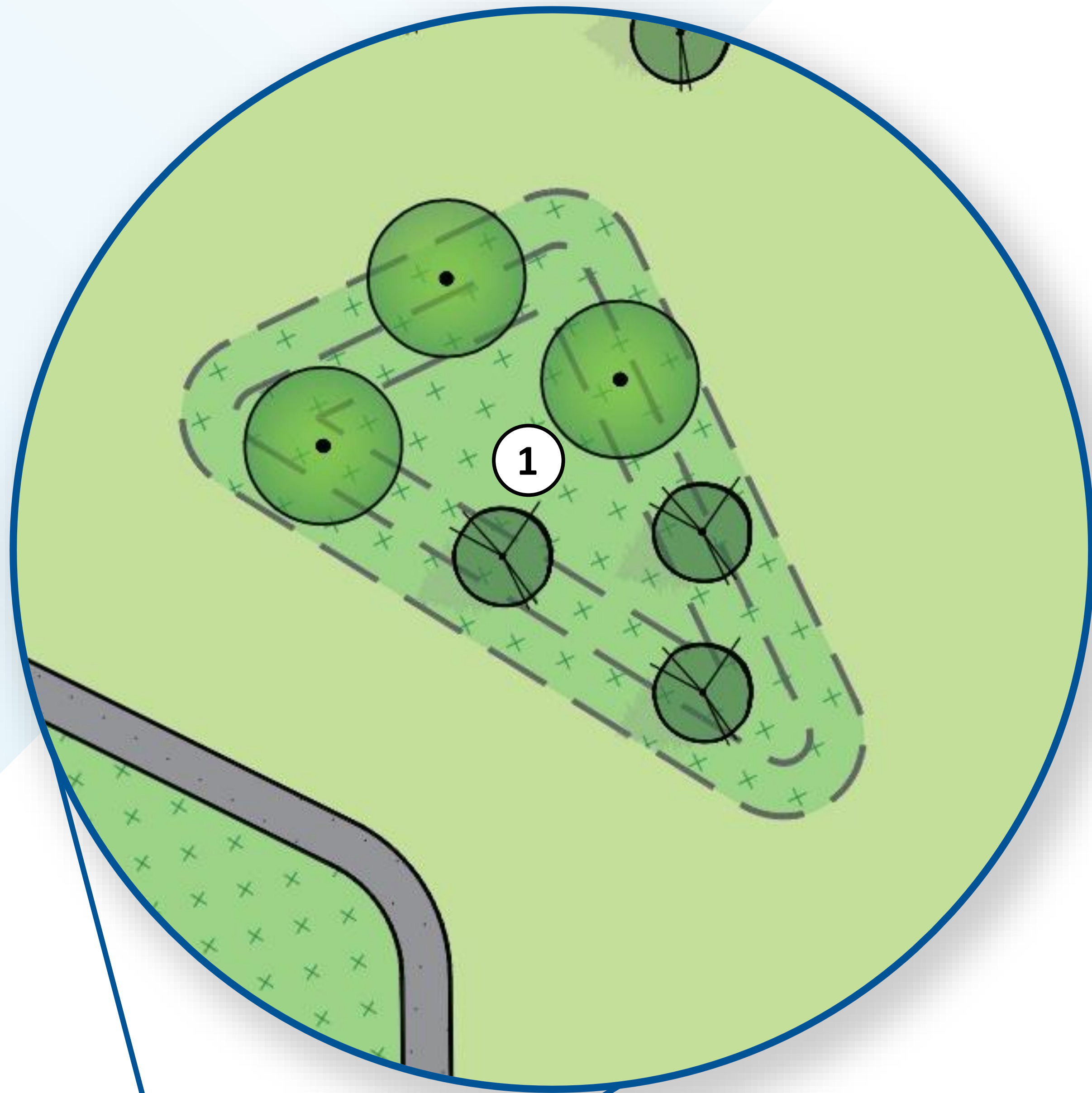
# Park components – basketball and soccer



- ① Half basketball court
- ② Seating area
- ③ Soccer field (35 metres by 50 metres)
- ④ Bike parking



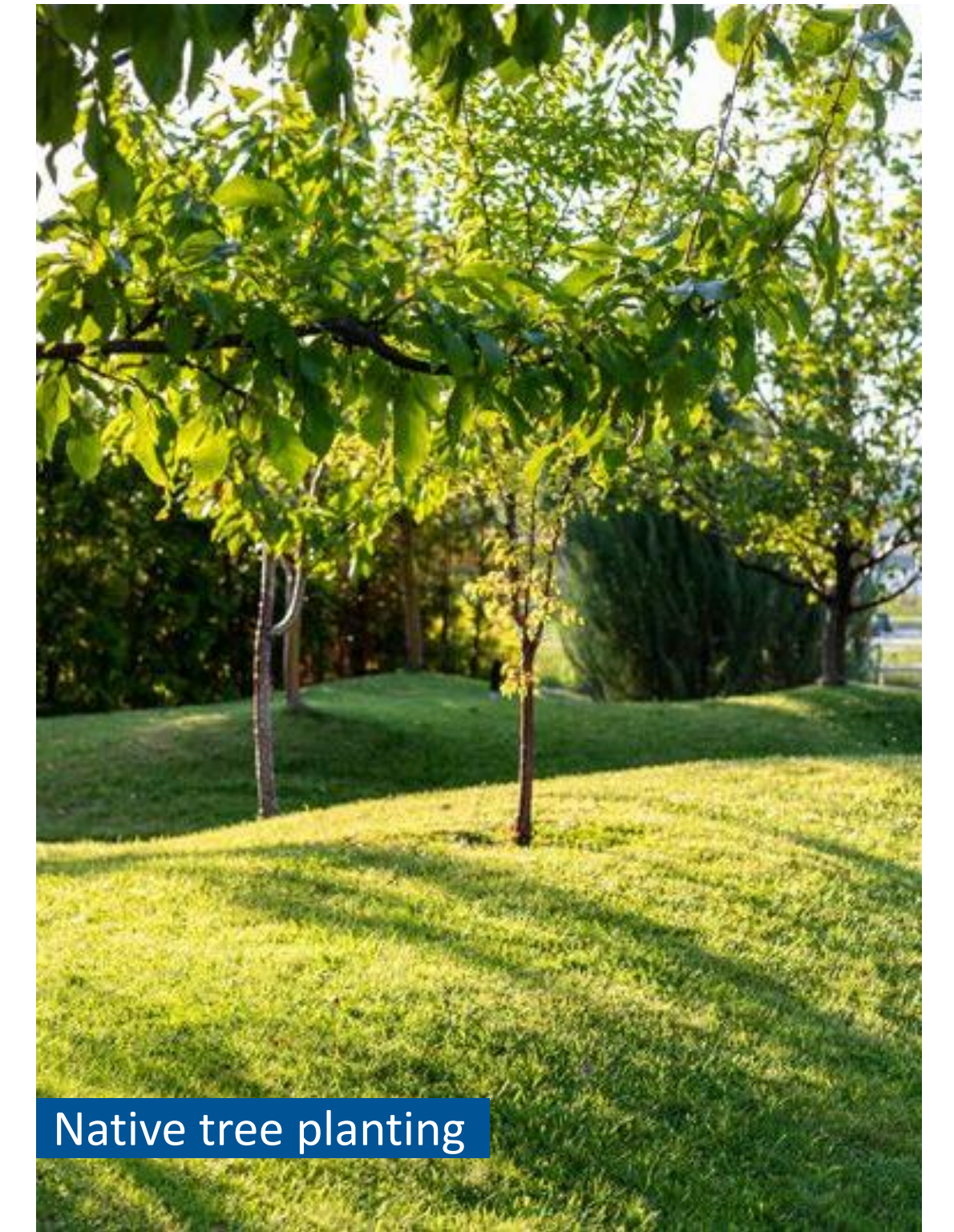
# Park components – naturalization and planting



① Earth mound with naturalized planting



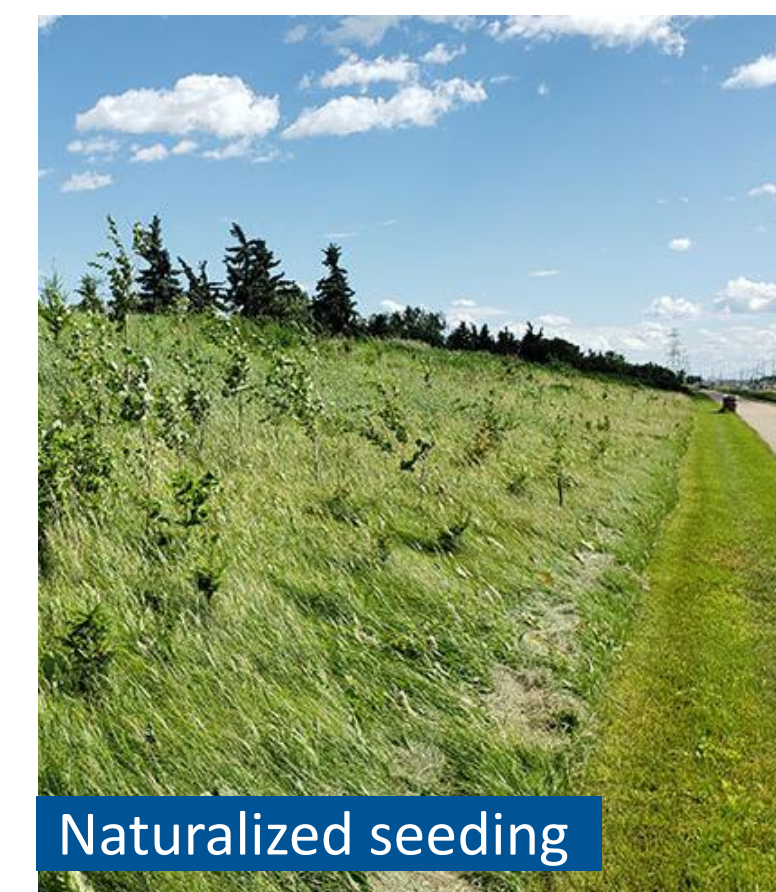
Native tree planting



Native tree planting



Naturalized seeding



Naturalized seeding



Native tree planting



Native tree planting



# Share your thoughts

Questions and comments may be submitted to the contact provided below until Wednesday, July 8.

Marc Varone, Project Manager,  
Facilities and Parks Delivery  
[marc.varone@vaughan.ca](mailto:marc.varone@vaughan.ca)

[vaughan.ca/parks](https://vaughan.ca/parks)

