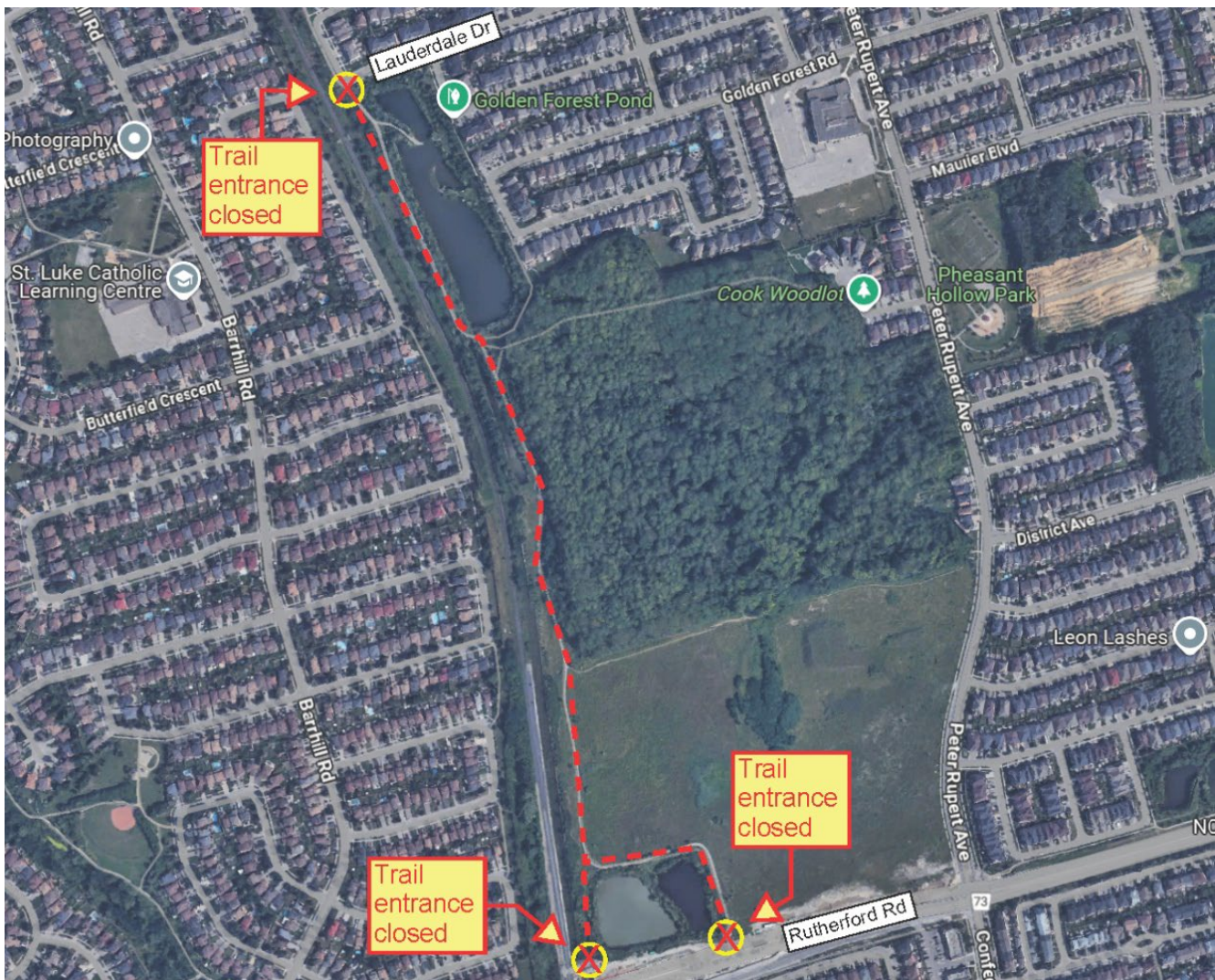


Work to redirect water away from the area is scheduled to begin on Monday, Jan. 19, subject to weather conditions. The closure will remain in place until the spring, or until the pathway is clear of ice. Signs and barriers are in place to guide visitors around the area.

## Trail closure map



For more information, please contact Service Vaughan at 905-832-2281. For after-hours inquiries, call the dispatch office at 905-832-2281 and press 0.