

THE CITY OF VAUGHAN

BY-LAW

BY-LAW NUMBER 277-2025

A By-law to assume municipal services associated with the Kleinburg North Spine Services (Partial 2).

WHEREAS the Servicing Agreement between The Corporation of The City of Vaughan (the “City”) and Kleinburg North Landowners Group Inc. dated March 11th, 2012, (the “Servicing Agreement”) provides for the construction and installation of municipal services on the lands shown on Schedule “A” of this By-law.

AND WHEREAS the Deputy City Manager of Infrastructure Development has received certification that the municipal services set out in the Development Agreement have been constructed and installed in accordance with the City’s specifications.

NOW THEREFORE the Council of The Corporation of The City of Vaughan ENACTS AS FOLLOWS:

THAT

1. the City partially assume the municipal services set out in the area identified as ‘Kleinberg SPS (Subject Lands for Assumption) – Partial 2’ on Schedule “A” and as set out in the Servicing Agreement.

Voted in favour by City of Vaughan Council this 16th day of December 2025.

Steven Del Duca, Mayor

Todd Coles, City Clerk

Authorized by By-law 144-2018, as amended, being a Bylaw to delegate authority regarding certain matters to staff.

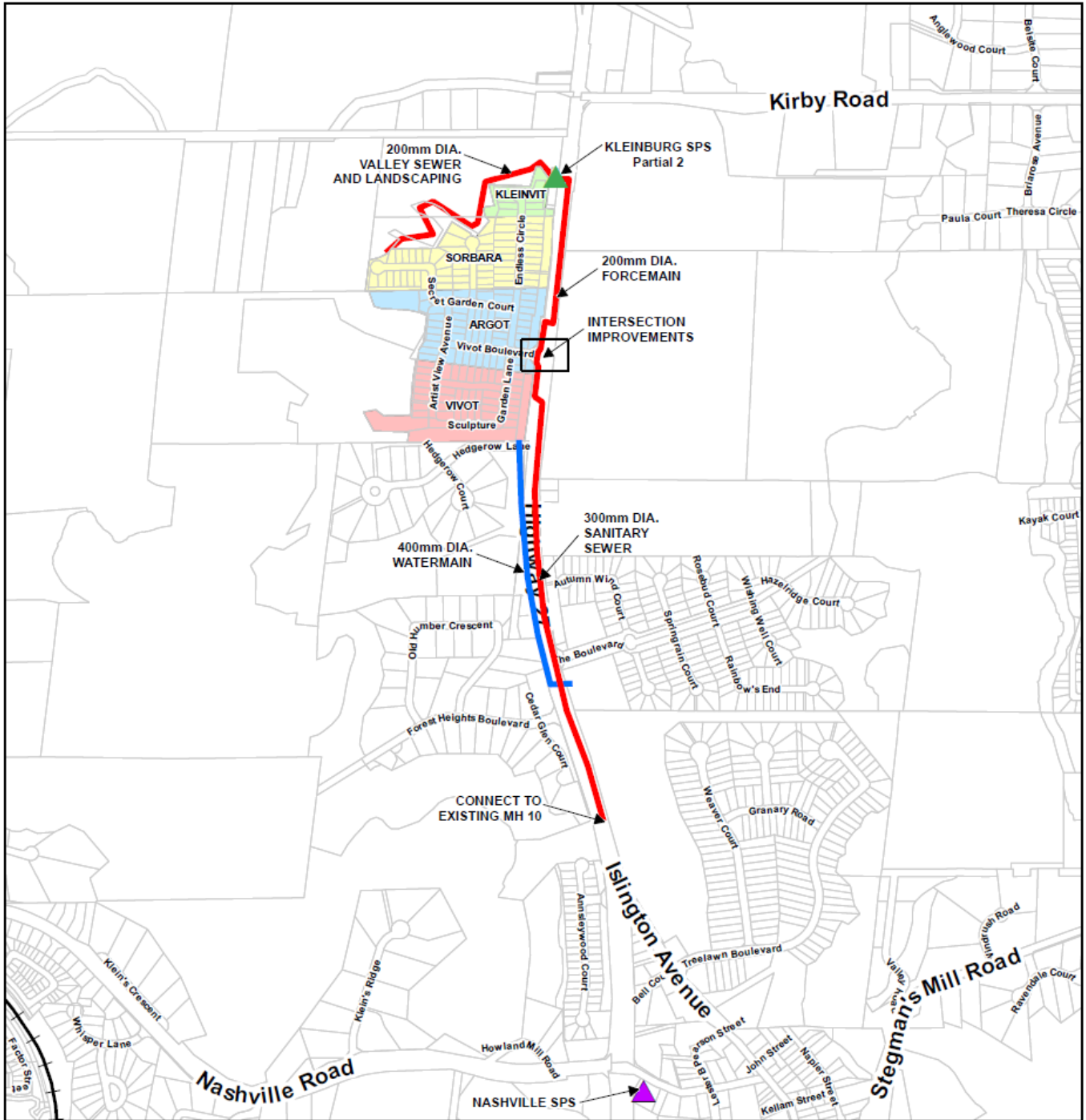
Adopted by Vaughan City Council on June 19, 2018.

City Council voted in favour of this by-law on December 16, 2025.

Approved by Mayoral Decision MDC 018-2025 dated December 16, 2025.

Effective Date of By-Law: December 16, 2025

SCHEDULE "A"



ASSUMPTION KLEINBURG NORTH SPINE SERVICES AGREEMENT - Partial 2

Legend

- | | |
|-----------------------------------------------------------------------------------------------------------------------------------------------------------------------------|-----------------------------------------------------------------------------------------------------------------------------------------------------------------------------------------------------------|
| VIVOT (Not Assumed Yet) | FORCEMAIN / SANITARY MAIN (Assumed in the past) |
| SORBARA (Not Assumed Yet) | WATERMAIN (Assumed in the past) |
| KLEINVIT (Not Assumed Yet) | SANITARY PUMPING STATION (Assumed in the past) |
| ARGOT (Not Assumed Yet) | KLEINBURG SPS (Subject Lands for Assumption) - Partial 2 |



NOT TO SCALE