

Disruption Alert

NOTICE: Temporary playground closure in Vellore Heritage Park

Construction is progressing on Fire Station 7-12 (9511 Weston Rd.). The next phase of work includes the installation of a new storm sewer connection, which will pass under a section of the playground located at the **Johnswood Crescent entrance of Vellore Heritage Park** (9541 Weston Rd.).

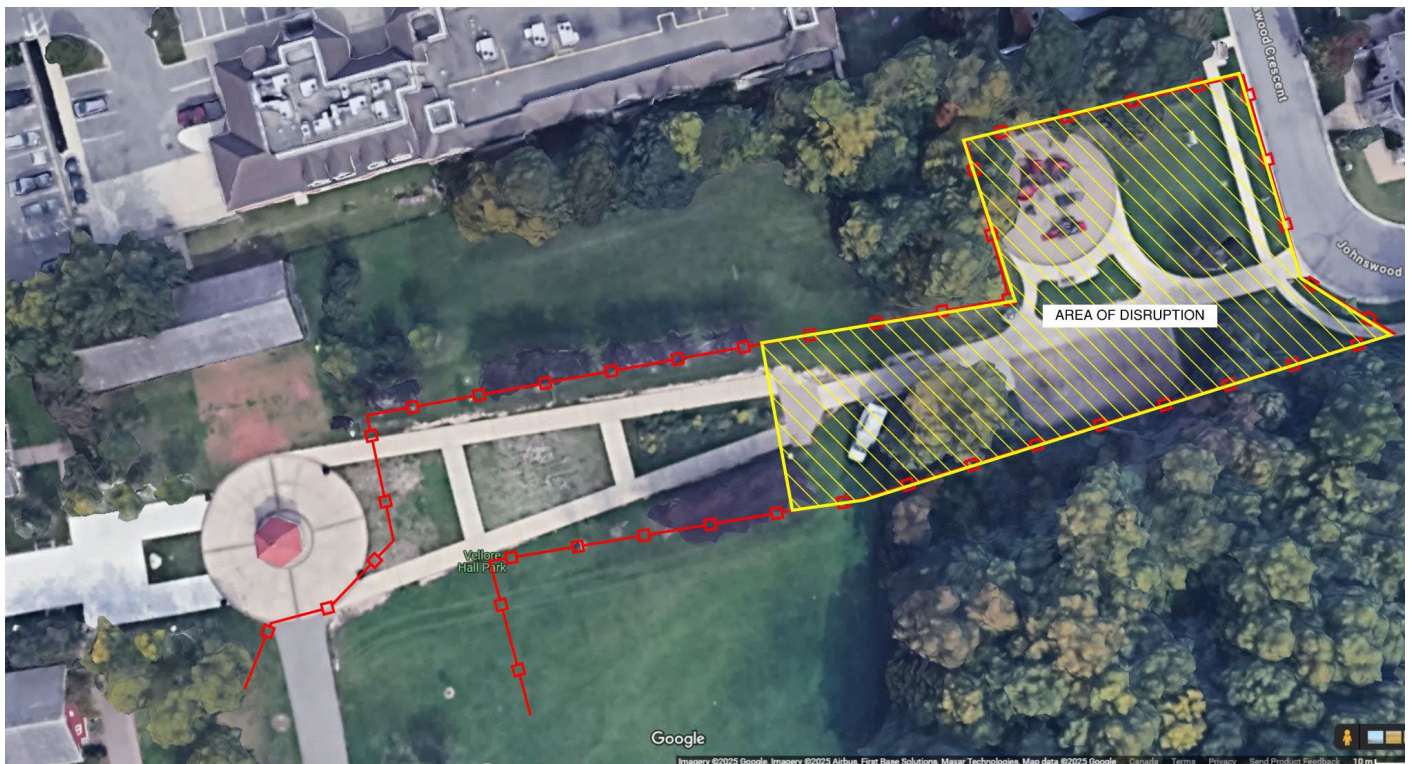
Routing the new connection under the playground is necessary for the following reasons:

- To protect the surrounding greenspace and avoid removing mature trees to the south
- To maintain a safe distance from existing underground infrastructure to the north

To safely accommodate the installation, **the playground will be temporarily closed during construction. Work is anticipated to begin on Tuesday, Aug. 5 and be completed this fall.**

For your safety, we ask all park visitors to exercise caution and respect on-site signage and fencing.

Closure map



For more information, please contact Service Vaughan at 905-832-2281. For after-hours, please call the dispatch office at 905-832-2281 and press 0.