

Welcome to the **Vellore Woods Community Improvements** Public Open House | Aug. 15, 2024





Program Overview

Improvements coming to Vellore Woods!

The City of Vaughan is working to improve parks and natural areas within the Vellore Woods community.

As part of the Vellore Woods Community Improvements Program, compensation funding generated from local development will be allocated to improving parks and natural areas in the community. This includes ecological restoration, natural area enhancements and upgrades to existing parks and trails – all to make the community more sustainable, enjoyable and accessible for current and future generations.

In collaboration with the Restoration Plan Committee including the Vellore Woods Ratepayers' Association, the City has identified the following improvement projects:

Natural Area Improvements

Ecological Enhancements

- A** Vellore Tract Woodlot
- B** Wildberry and Sunview Ponds
- C** Hawstone Rd. to Vellore Woods Blvd. Corridor

Ecological enhancements to the existing natural areas in Vellore Woods are being planned. This plan will be informed by an assessment of existing ecological conditions.

Trail Improvements



Improvements to the existing trails in the Vellore Tract Woodlot are being planned, to improve accessibility, promote stewardship and support the health of sensitive woodlot vegetation.

Implementation of the Natural Area Improvements is targeted to begin in 2027.

Park Improvements

Park Planting

- 1** Comdel Park
- 2** Vellore Heritage Park
- 3** Vellore Woods Park
- 4** Starling Park
- 5** Hawstone Park

Locations within these five existing parks have been identified for additional plantings of trees, shrubs, grasses and/or perennials.

Shade Structure



A new shade structure is being planned for Hawstone Park. Two potential locations for this new structure have been identified.

Implementation of the Park Improvements is targeted to begin in 2025.



Natural Area Improvements

Ecological Enhancements

- A** Vellore Tract Woodlot
- B** Wildberry and Sunview Ponds
- C** Hawstone Rd. to Vellore Woods Blvd. Corridor

Natural area enhancements may include, but are not limited to, the following initiatives:

Invasive Species Control



Invasive species (plants that are not native to the area) can be harmful to the natural environment as they can crowd out native species, impacting biodiversity and the wildlife dependent on them.

New Wildlife Habitat Features



Structures such as nest boxes or perching poles that mimic natural habitat conditions will be added.

Infill and Edge Planting



Plants will be added to the existing natural areas to increase diversity and planting density.



Natural Area Improvements

Trail Improvements

★ Vellore Tract Woodlot

Trail improvements will be implemented in the Vellore Tract Woodlot, focusing on the main pathway that runs from Vellore Woods Boulevard to Weston Road. The enhancements will include the following:

Accessible Boardwalk



Making the trail accessible to wheelchairs, strollers and other assistive devices. This will also protect the woodland vegetation.

New Seating

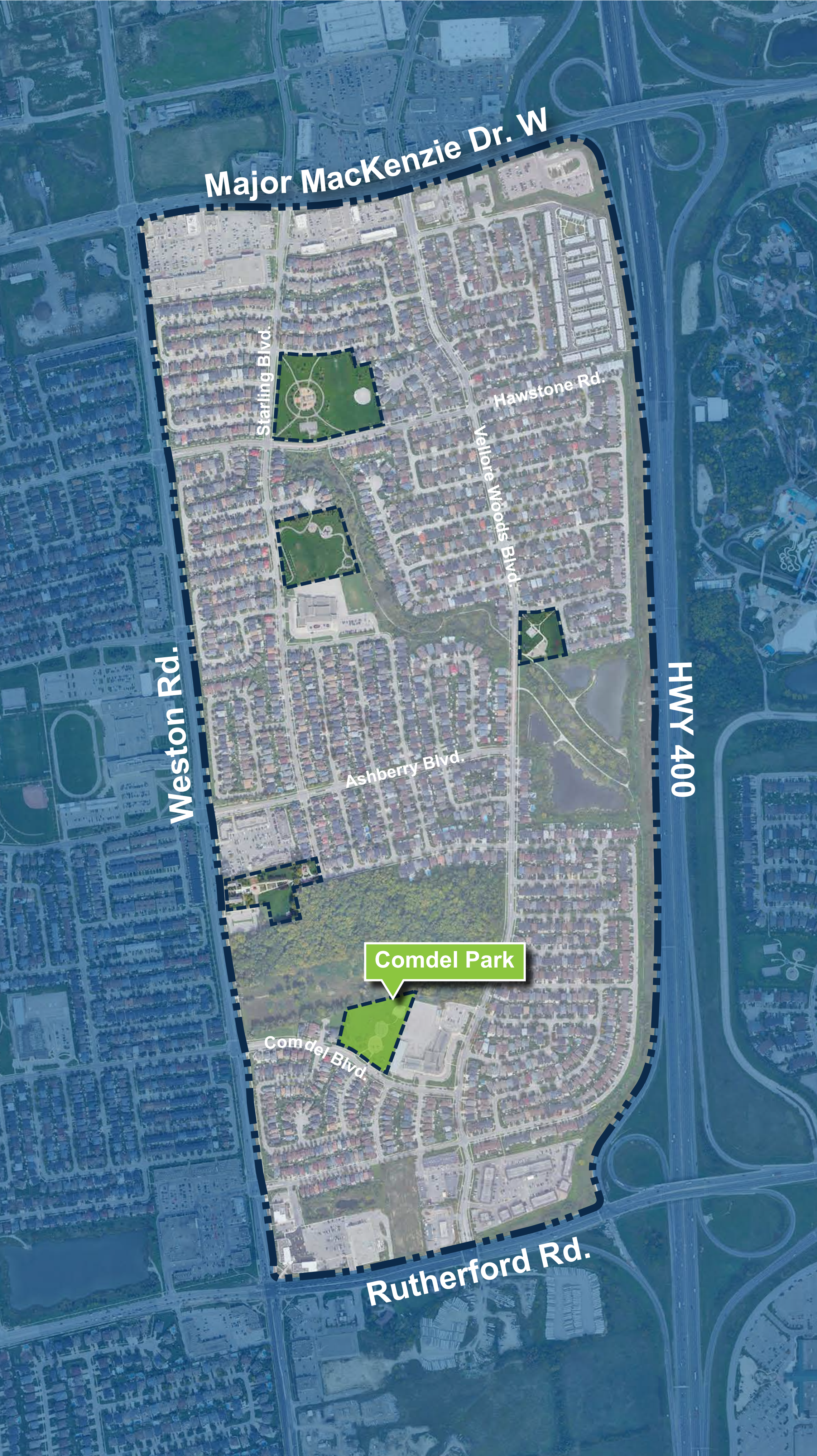


Increasing the number of rest areas along the trail.

Interpretive Signage



Adding educational signage about the ecology of the area.

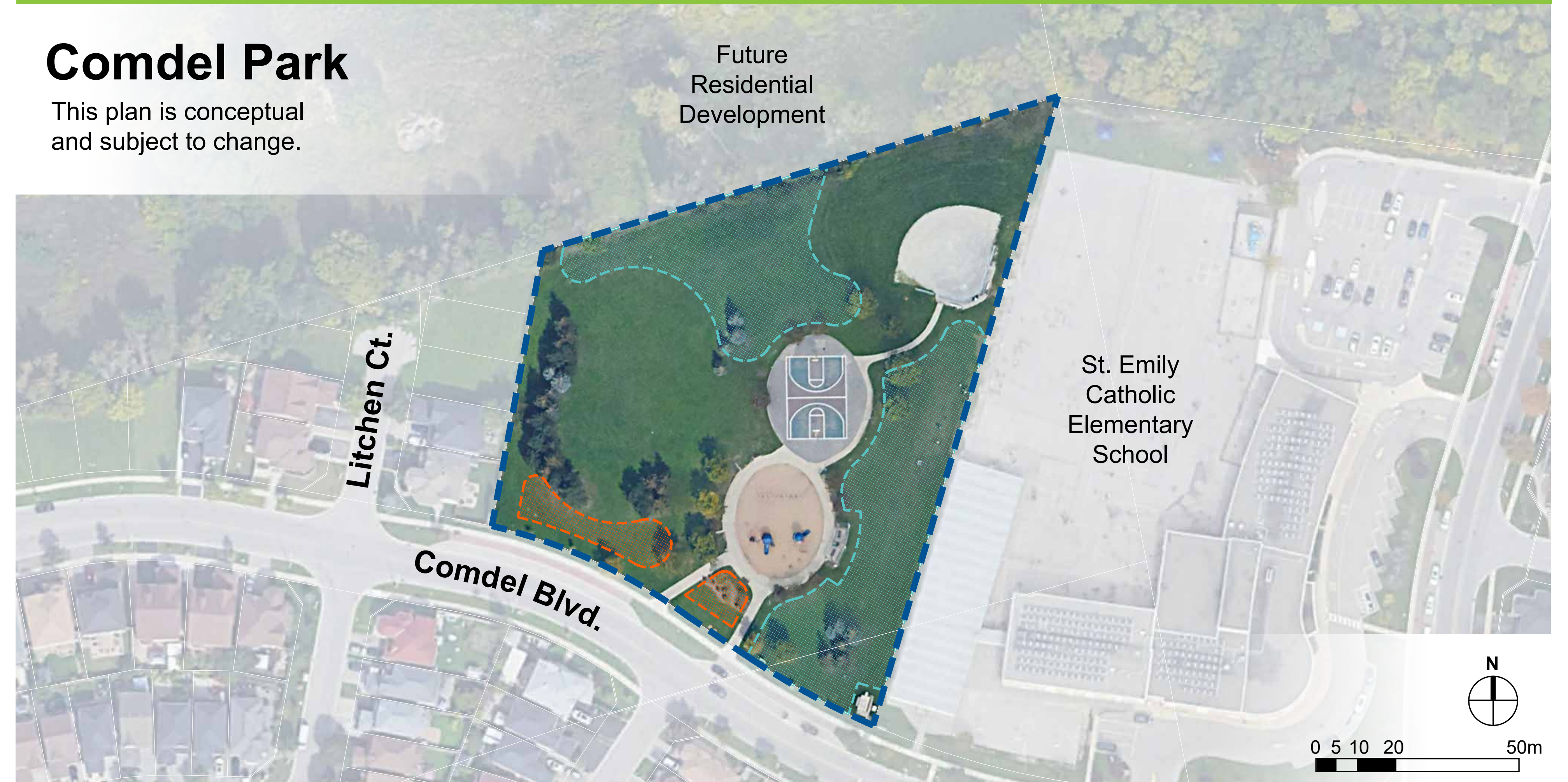


Park Improvements

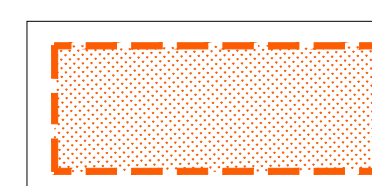
Park Planting

Comdel Park

This plan is conceptual and subject to change.

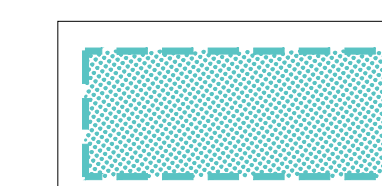


Park Planting



Park planting areas will be planted with large deciduous trees and low native and drought tolerant shrubs, grasses and perennials.

Woodland Planting



Woodland planting areas will be densely planted with a mix of different sizes of trees and shrubs. Over time, these areas will grow into woodlands.



Park Improvements

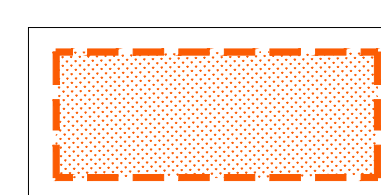
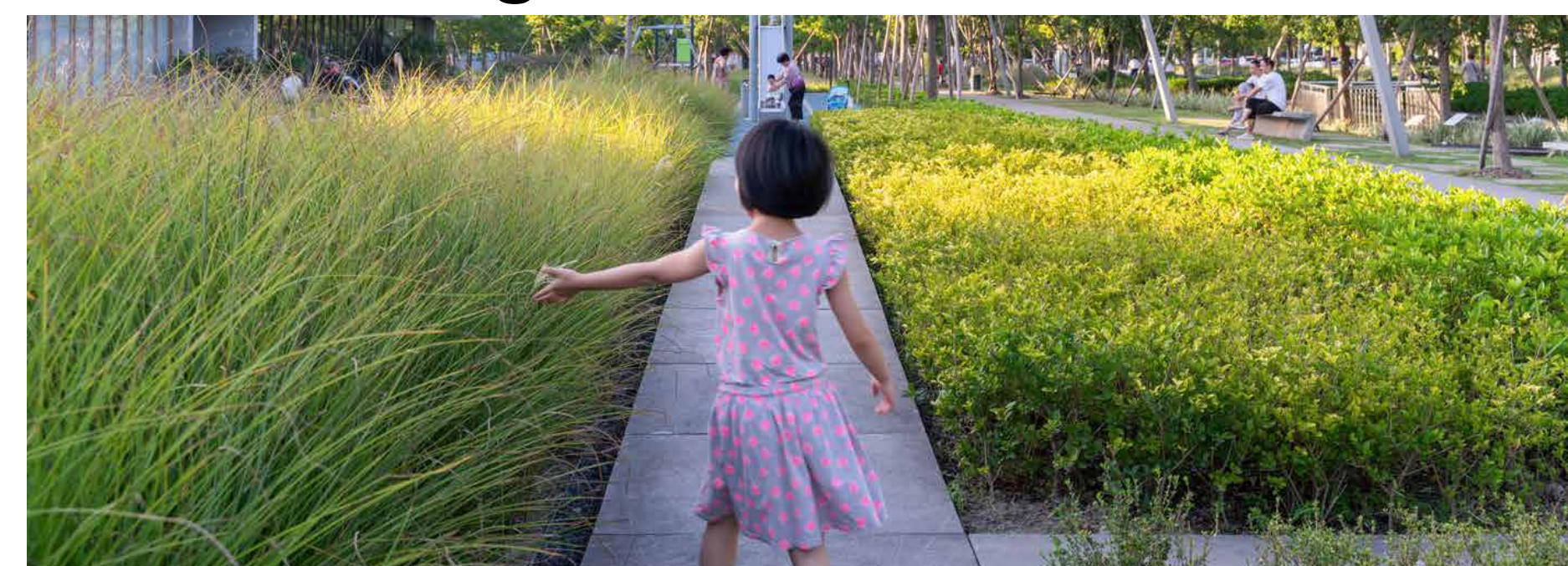
Park Planting

Vellore Heritage Park

This plan is conceptual and subject to change.

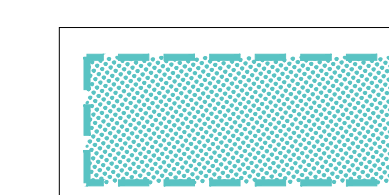


Park Planting



Park planting areas will be planted with large deciduous trees and low native and drought tolerant shrubs, grasses and perennials.

Woodland Planting



Woodland planting areas will be densely planted with a mix of different sizes of trees and shrubs. Over time, these areas will grow into woodlands.



Park Improvements

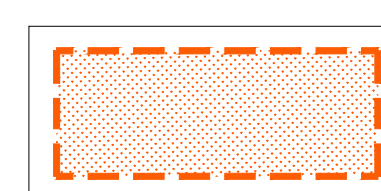
Park Planting

Vellore Woods Park

This plan is conceptual and subject to change.

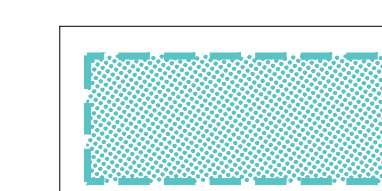


Park Planting

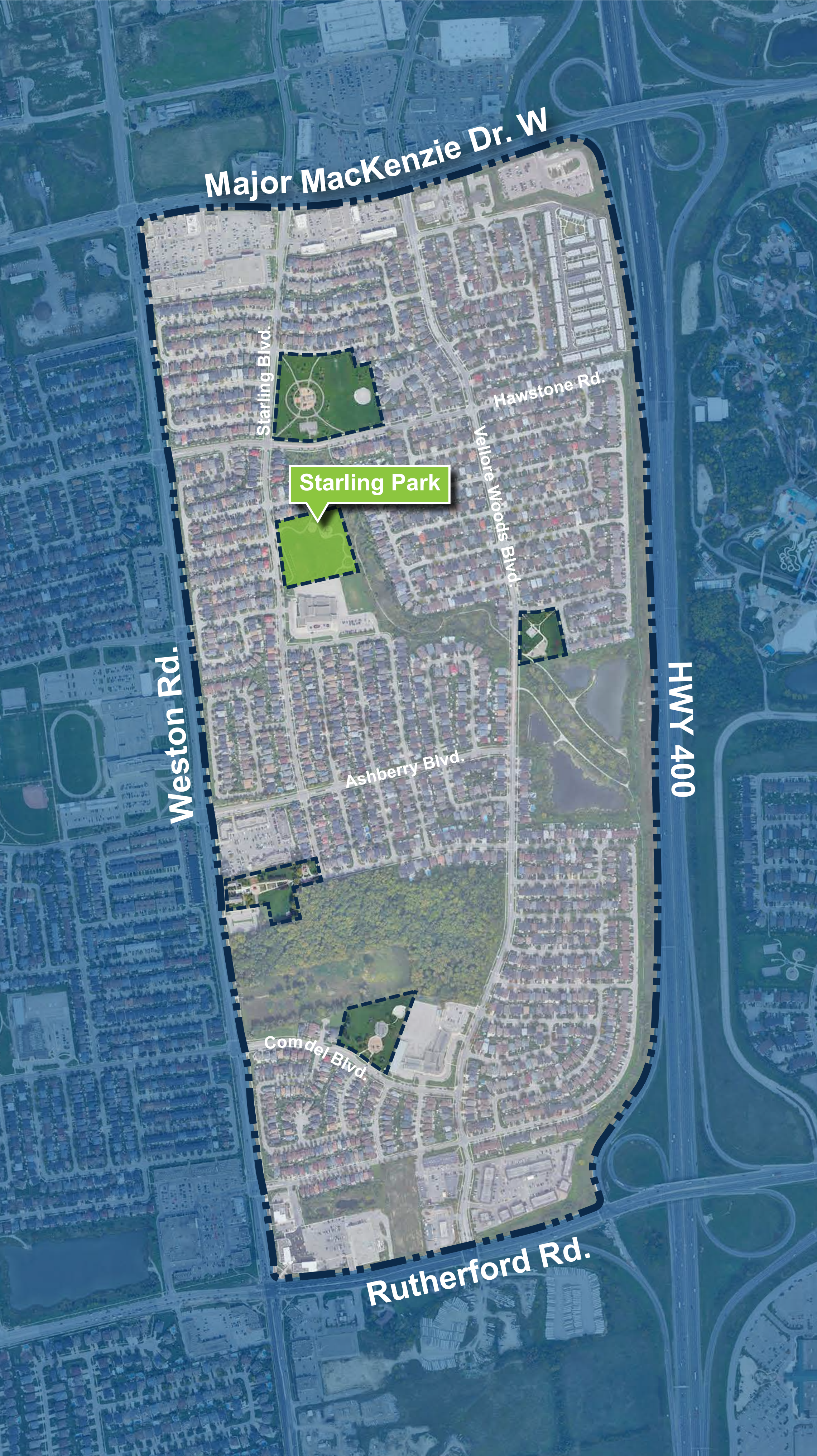


Park planting areas will be planted with large deciduous trees and low native and drought tolerant shrubs, grasses and perennials.

Woodland Planting



Woodland planting areas will be densely planted with a mix of different sizes of trees and shrubs. Over time, these areas will grow into woodlands.



Park Improvements

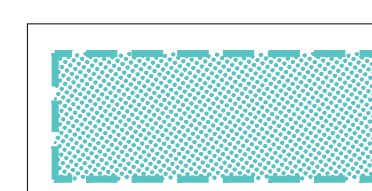
Park Planting

Starling Park

This plan is conceptual and subject to change.



Woodland Planting



Woodland planting areas will be densely planted with a mix of different sizes of trees and shrubs. Over time, these areas will grow into woodlands.

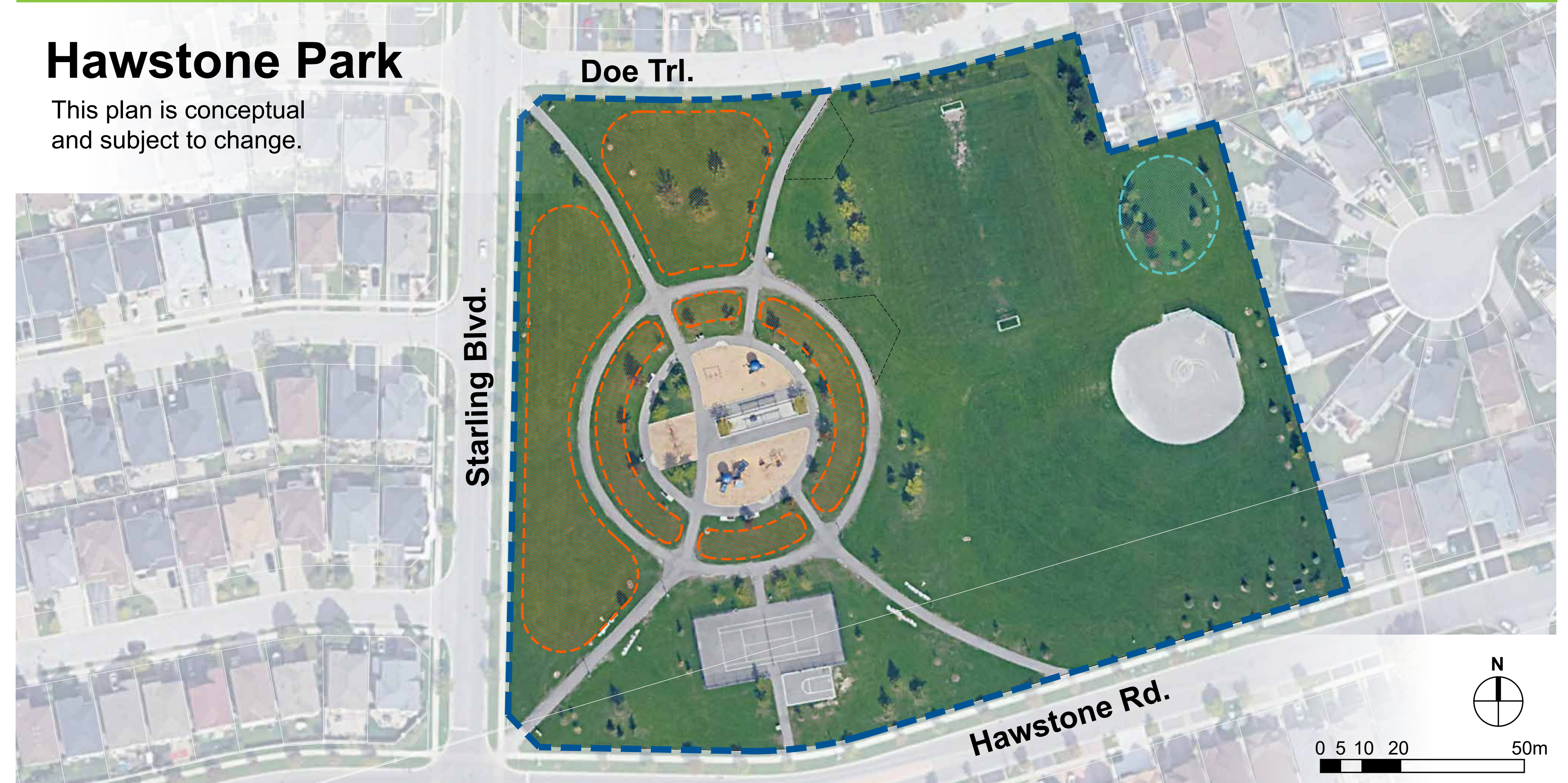


Park Improvements

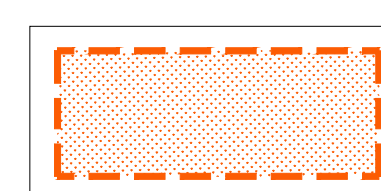
Park Planting

Hawstone Park

This plan is conceptual and subject to change.

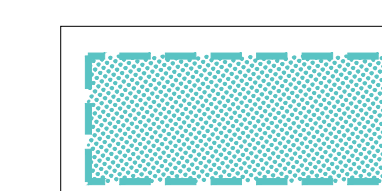


Park Planting

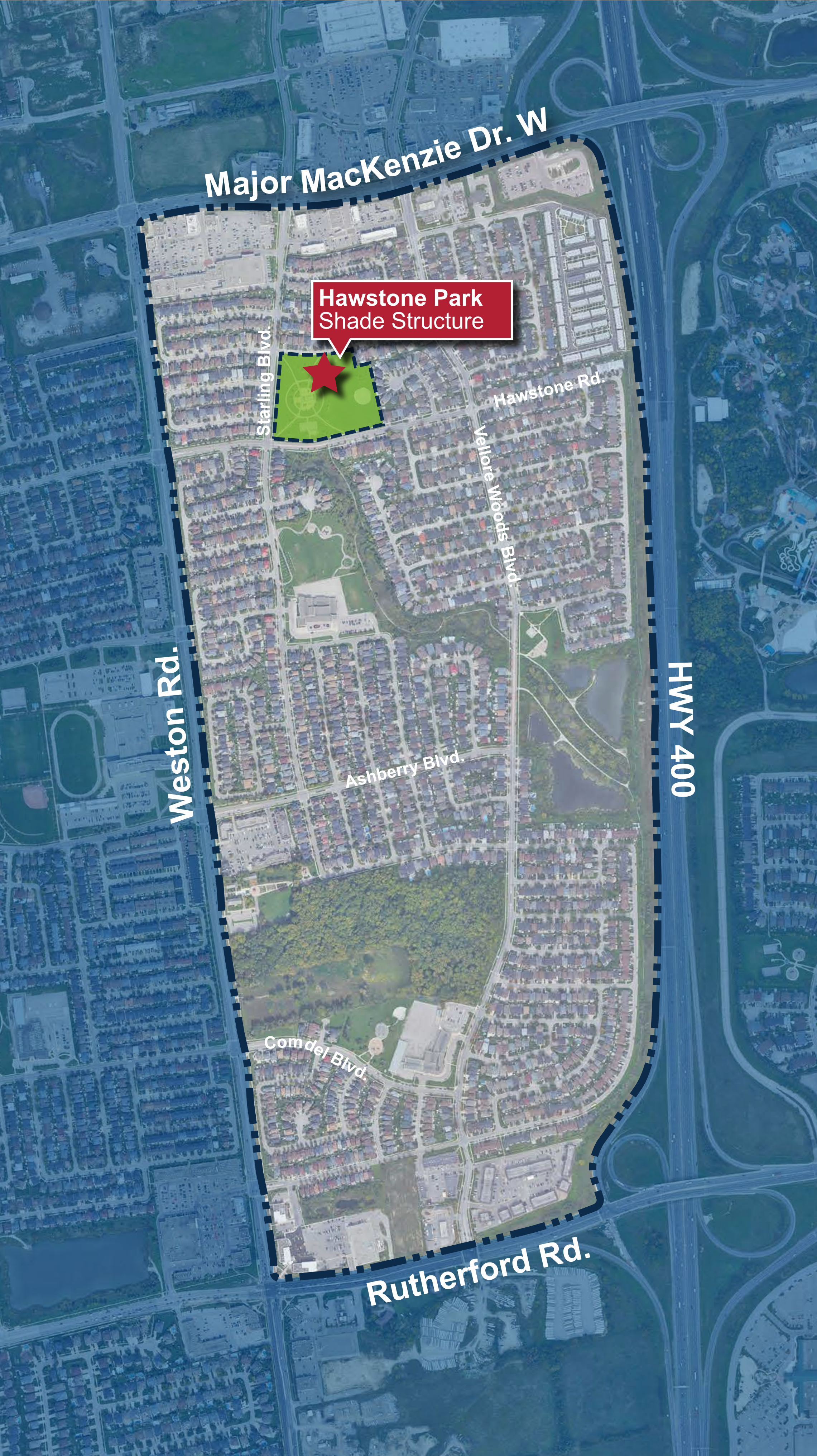


Park planting areas will be planted with large deciduous trees and low native and drought tolerant shrubs, grasses and perennials.

Woodland Planting



Woodland planting areas will be densely planted with a mix of different sizes of trees and shrubs. Over time, these areas will grow into woodlands.



Park Improvements

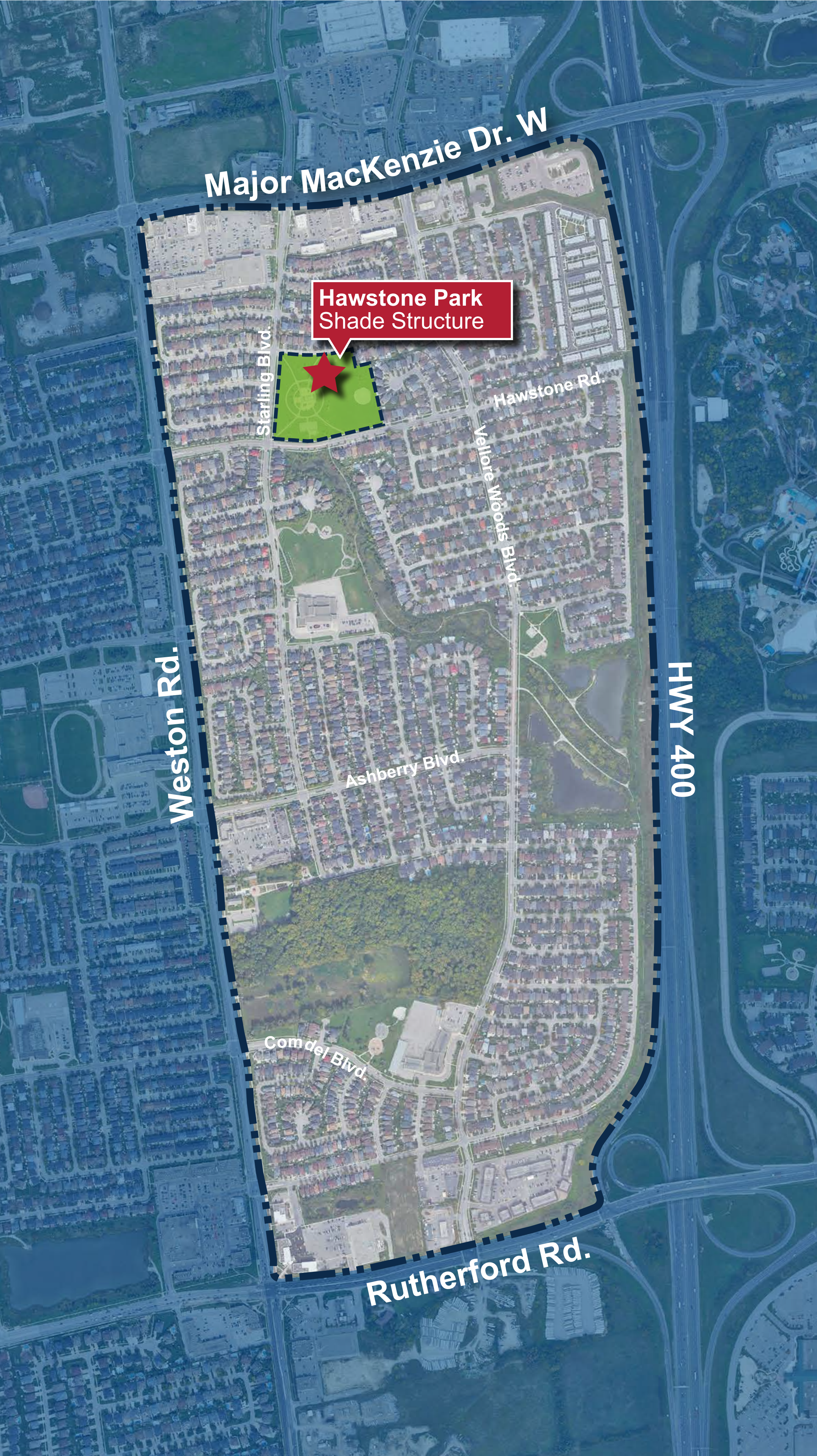
Shade Structure

The City heard there's a desire for a shaded gathering place for spectators of the sports fields within Hawstone Park. Therefore, a new shade structure is proposed. City staff have determined two feasible locations for this new shade structure and would like your input on the preferred location.

Hawstone Park

This plan is conceptual and subject to change.





Park Improvements

Shade Structure

Option 1

At the north end of the park, between the soccer field and existing pathway.



Option 2

In the middle of the park, between the soccer field and central playground area.





Thank you

for participating in the Vellore Woods Community Improvements Public Open House!



Information and updates will be posted to vaughan.ca/parks as the project progresses.

QUESTIONS:

Steph Payne, Project Manager
Stephanie.payne@vaughan.ca