

Welcome to the **Alexander Elisa Park** **Bocce Court Improvements** **Public Open House | June 24, 2025**



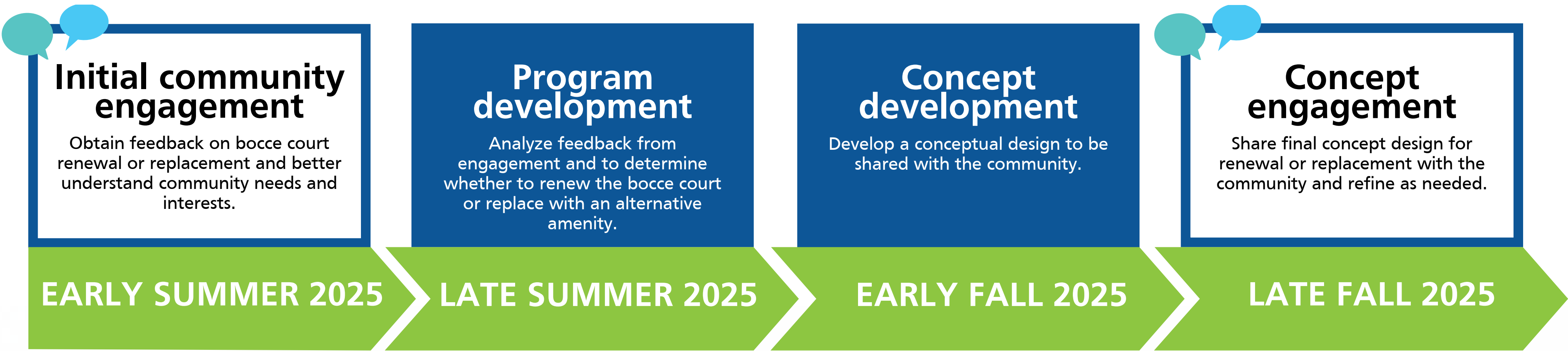
About the project

Proposed improvements are coming to Alexander Elisa Park!

The City of Vaughan is renewing the bocce court at Alexander Elisa Park through our State-of-Good-Repair Program. This amenity has been closed and is in need of renewal. Before we move forward, we’re seeking community feedback on:

- bocce court use and interest
- whether to renew the bocce court or replace it with a different amenity
- ideas for future park redevelopment

Engagement and design timeline



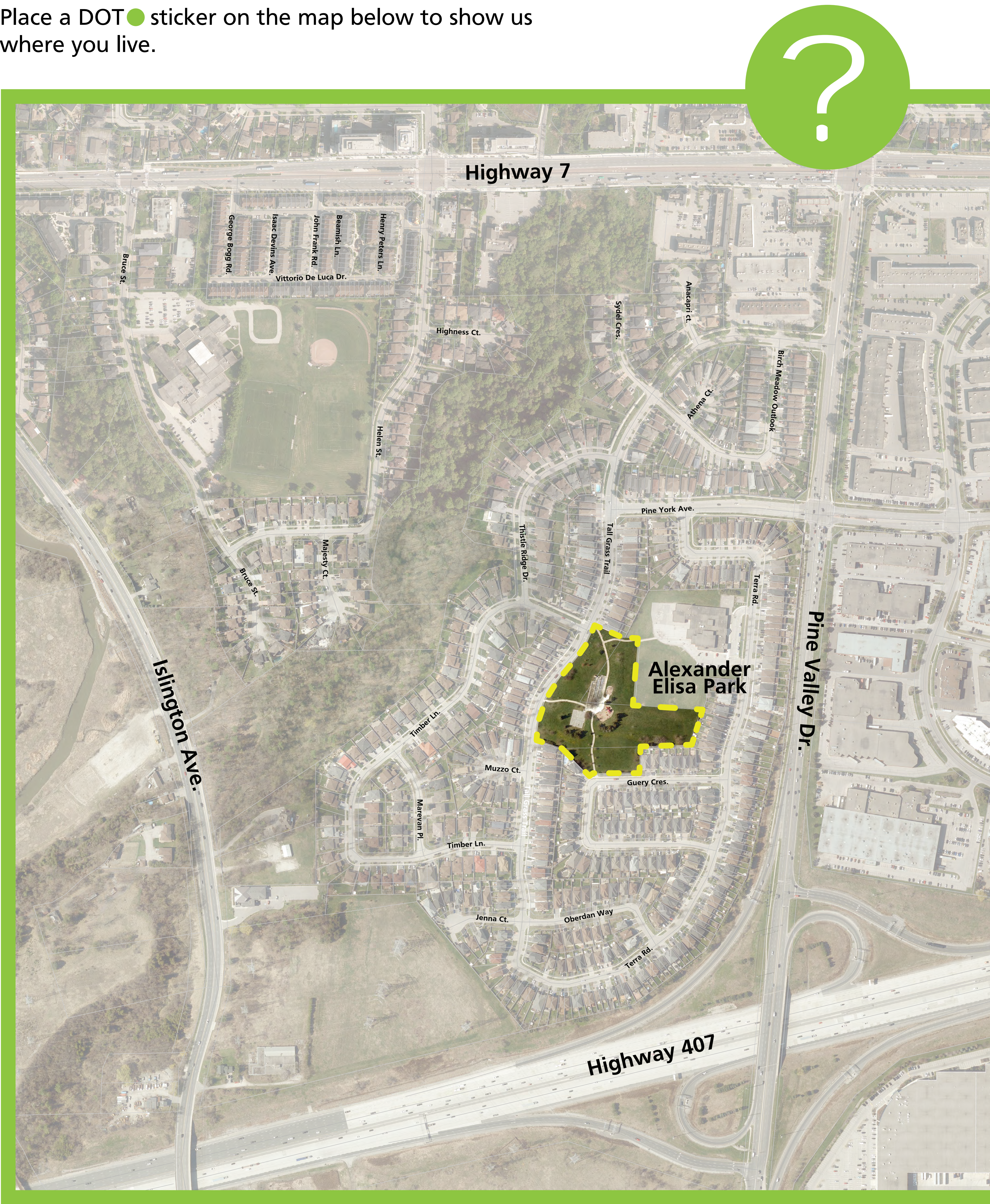
Please note this project timeline may be subject to change.



Getting to know you!

Q1: Where do you live?

Place a DOT ● sticker on the map below to show us where you live.



Getting to know you!

Q2: Including yourself, what age groups apply to the people in your household?

Place a DOT ● sticker inside each age range box that applies. Note: If you have two members in the same age group, you only need to add one sticker.



Preschool age (four years or under)
School age (five years to 12 years)
Teen (13 years to 19 years)
Young adult (20 years to 29 years)
Adult (30 years to 54 years)
Older adult (55 years or over)

Q3: How often do you visit the park?

Place a DOT ● sticker inside the box that best represents how often you or your family visit the park.

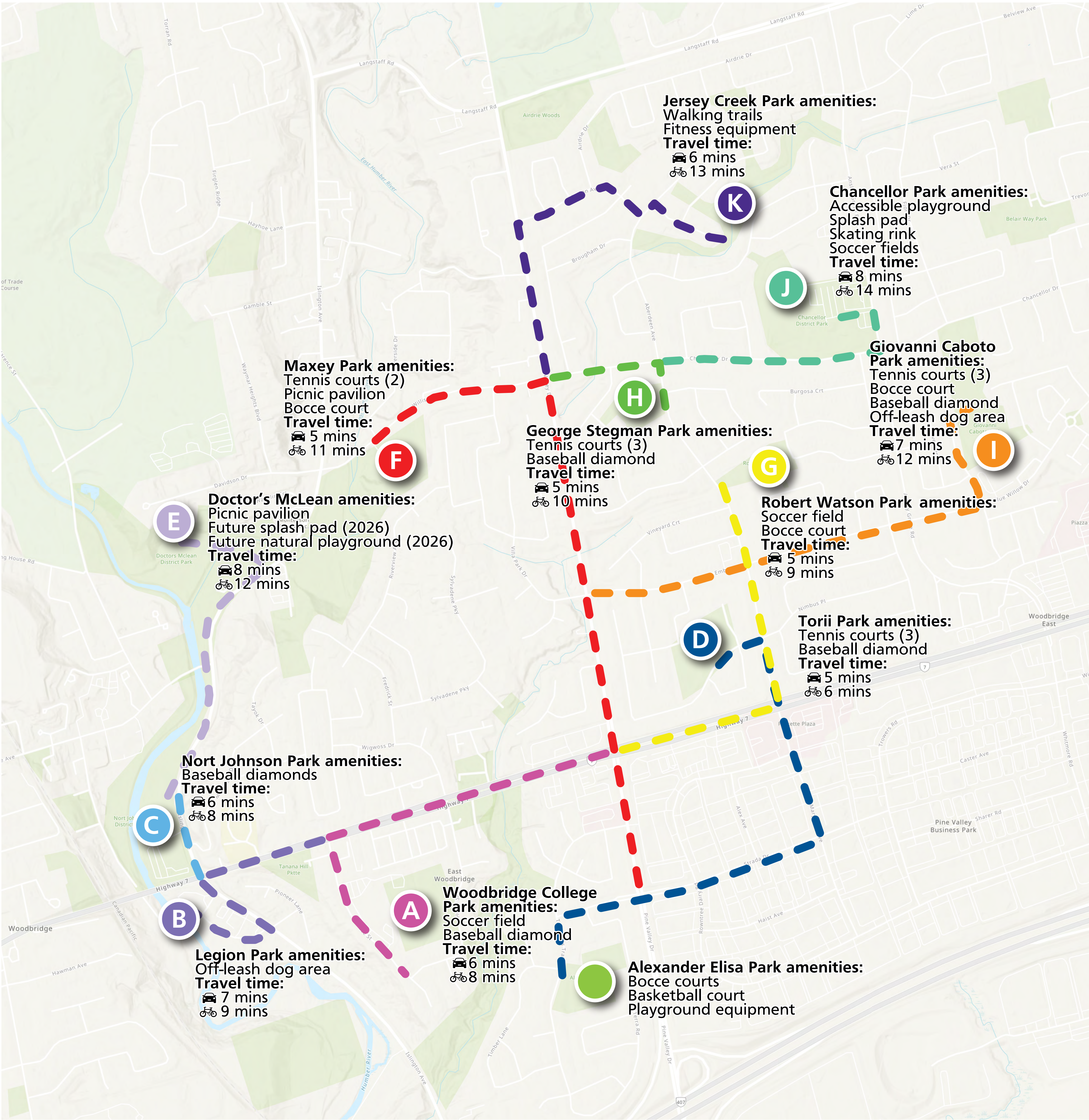


Daily
Weekly
A few times a month
Monthly
A few times a year
Never

Get to know your neighbourhood

Check out what amenities are located near Alexander Elisa Park!

When designing parks, City staff will review the amenities available in nearby parks to determine what might be needed or missing. The map below captures the parks and amenities currently available within a five kilometre distance of Alexander Elisa Park.



Use of nearby parks

Q4: What other parks do you visit and what do you travel there for?

Use a STICKY NOTE  to write your answer and post it in the box below.



Let's talk about splashpads...

While we understand the community may be interested in a splashpad, the City will not be able to provide one at Alexander Elisa Park due to servicing limitations, budget constraints and City policy. This park lacks the storm and sanitary sewer infrastructure needed to support this amenity, and this would be very costly to build out. The City's 2025 Community Spaces Plan also directs any new splashpad development to larger parks (e.g. district parks).



Existing features

Alexander Elisa Park has a bocce court, playground, basketball court and open greenspace. As part of our State-of-Good-Repair Program, only the bocce court will be redeveloped at this time.

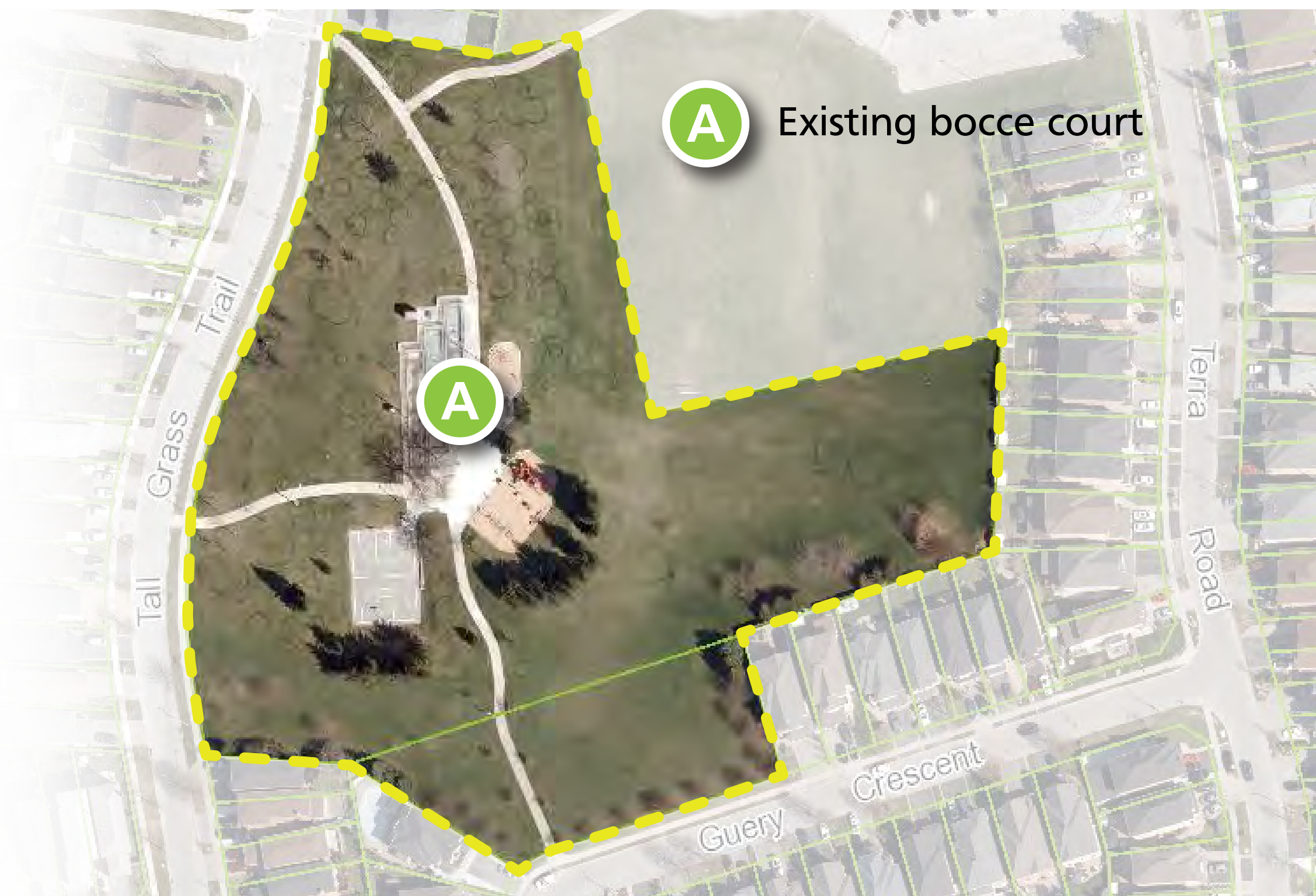


Let's plan the future of Alexander Elisa Park

Bocce court renewal vs. replacement:

The City's State-of-Good-Repair Program typically renews park amenities as they exist in the park. However, as the popularity of bocce has declined, we need input on whether to renew the bocce court or replace it with a different amenity.

So let's review the design options:



1

Renew bocce court

2

Replace the bocce court with a gathering space

3

Replace the bocce court with an outdoor fitness area

4

Replace the bocce court with more play equipment

5

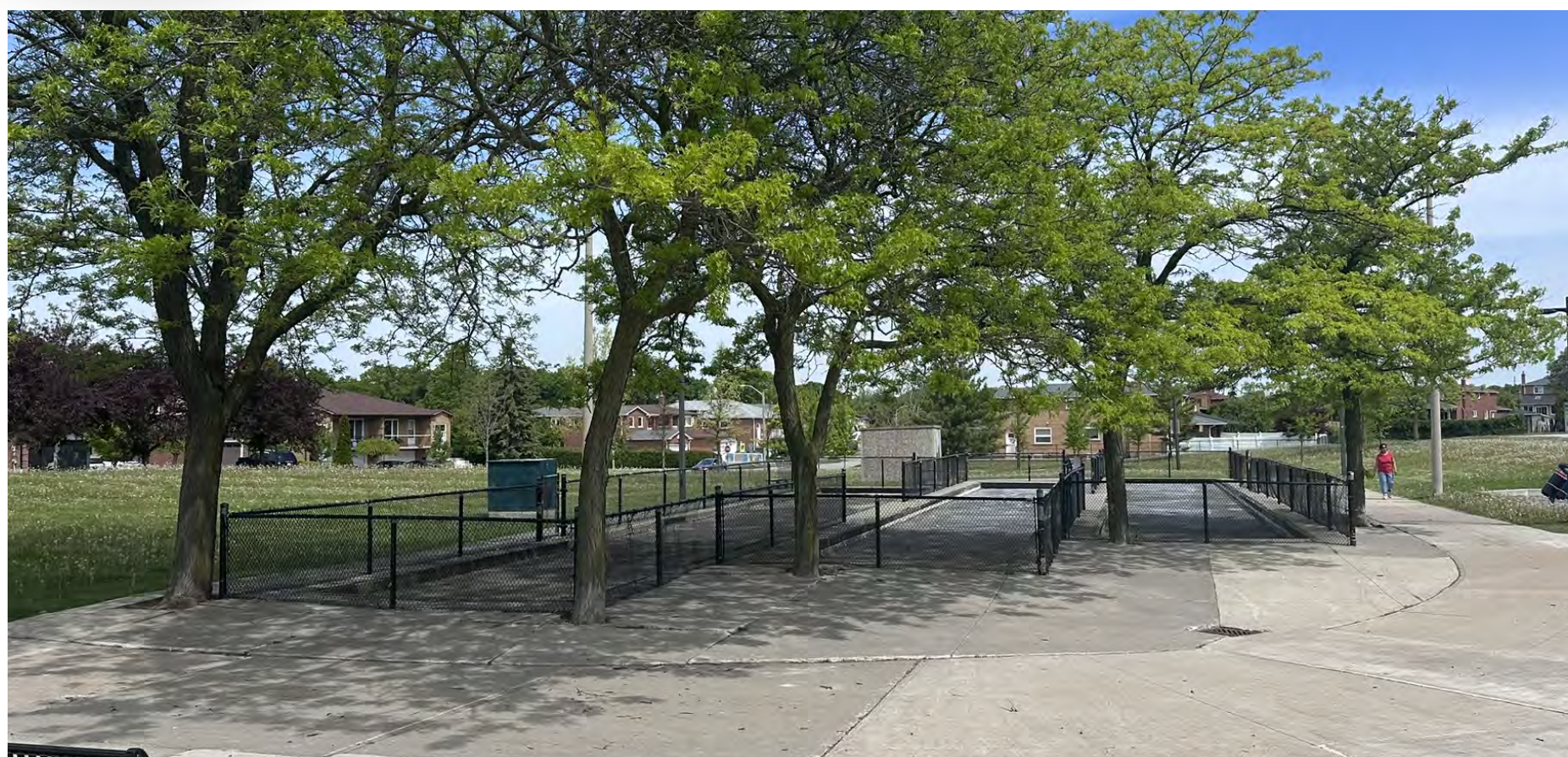
Replace the bocce court with a community garden

Have your say!



1

Renew bocce court



The renewed bocce court can be designed to include one, two or three lanes. The fewer the lanes, the larger the adjacent seating area can be. Regardless of the number of lanes, the renewed court will include new fencing, accessible interior walkways, at least one accessible lane, updated or relocated lighting and a storage building.

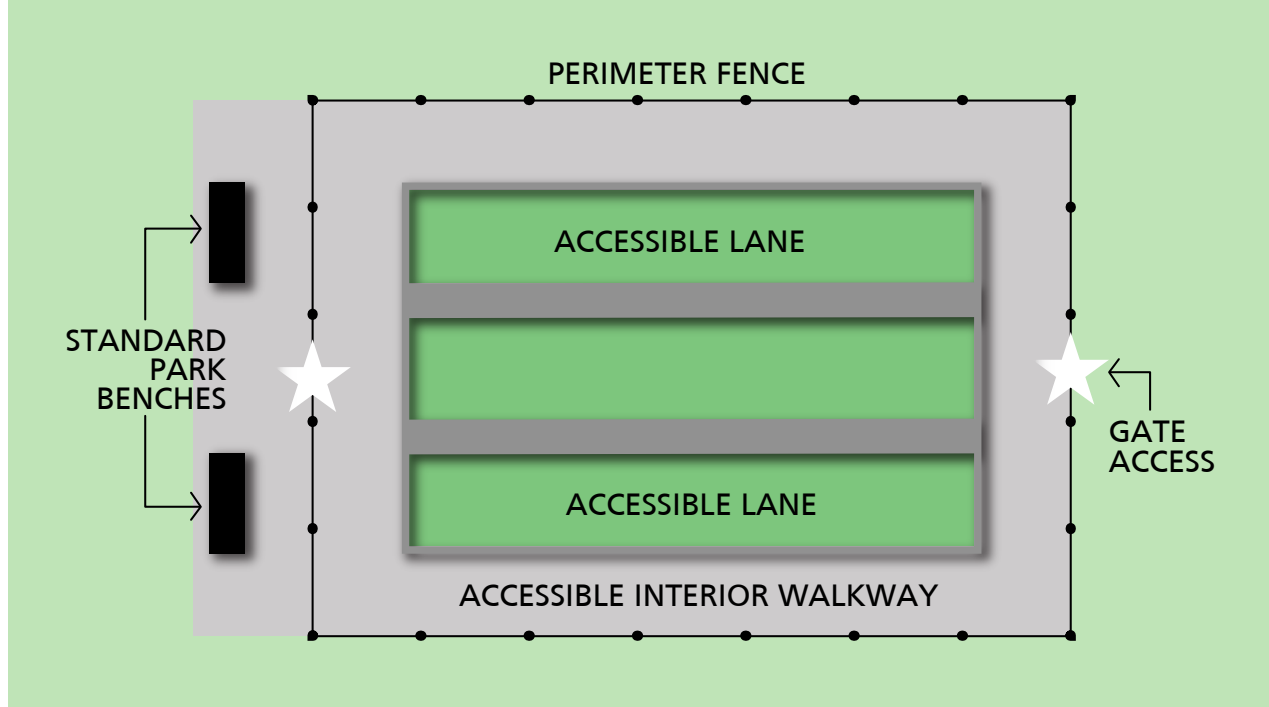
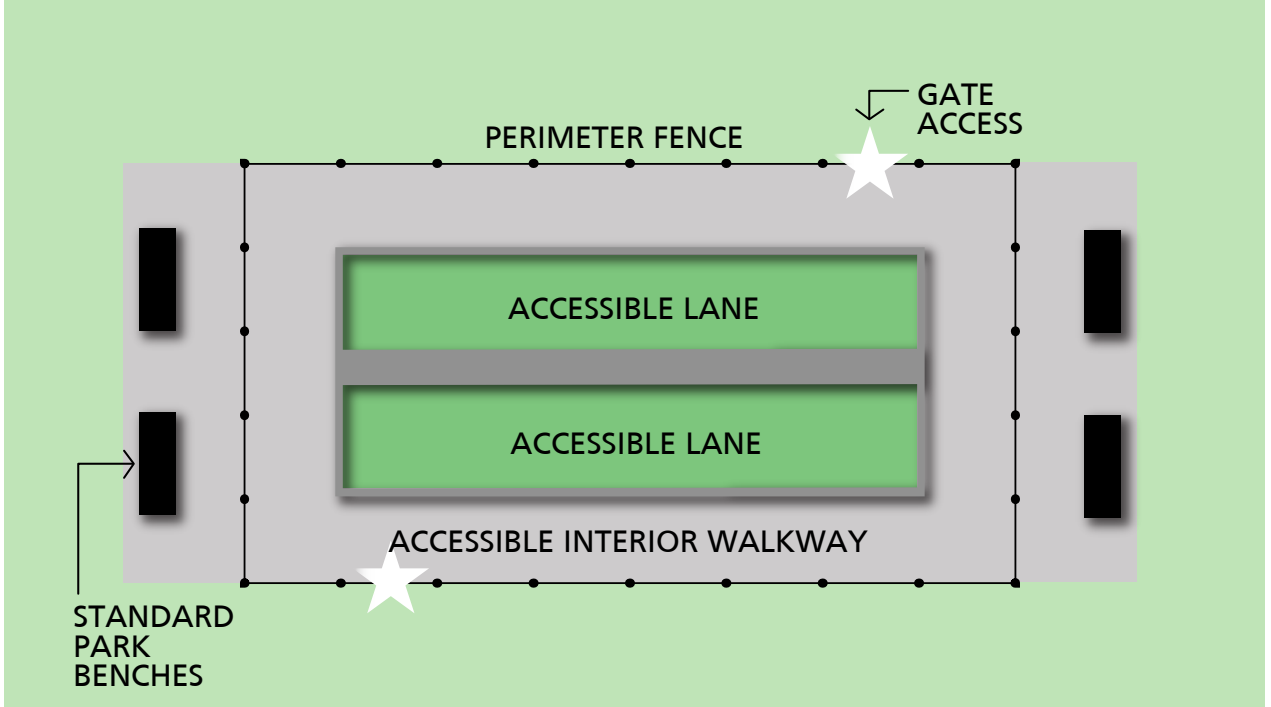
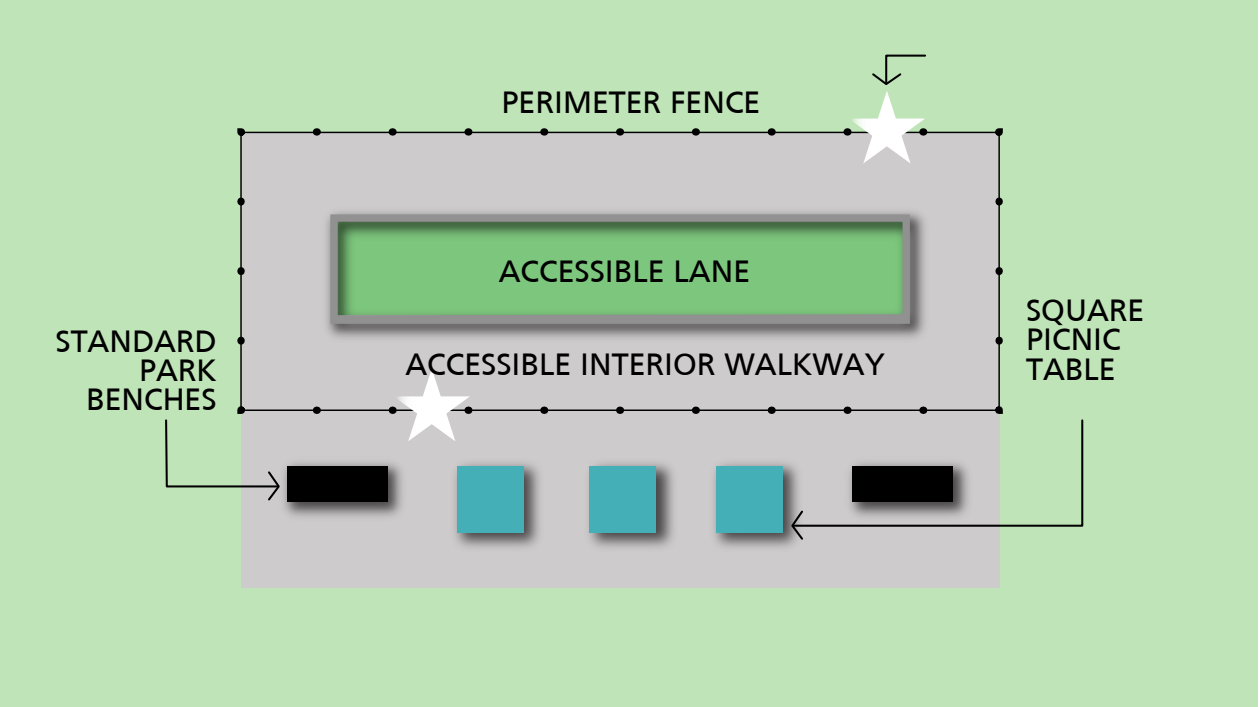
Q5: Do you think bocce should remain in Alexander Elisa Park?

Place a DOT ● stickers inside the box to tell us your preference.

Yes	No	No preference
-----	----	---------------

Q6: What renewal scenario do you prefer?

Place a DOT ● sticker inside the bocce renewal scenario you prefer.

<p>A Scenario A includes three bocce lanes and two benches.</p> 	<p>B Scenario B includes two bocce lanes with four benches.</p> 	<p>C Scenario C includes a single bocce lane, with a larger gathering area that includes benches and picnic tables.</p> 
--	---	--

Have your say!



2

Replace the bocce court with a gathering space

Gathering spaces in parks are an important and popular feature. These spaces can be out in the open or shaded, allowing park users to soak up the sun or catch a break from the elements. Seating options vary from individual seats to group seating for both small and large groups.





Q7: Would you prefer a gathering space in the sun or in the shade?

Use one of the DOT ● stickers to tell us your preference.

Shade	Sun	No preference

Q8: What type of seating would you prefer in the gathering space?

Use the DOT ● stickers to pick your top two preferences.

			
<div>Standard park bench</div>	<div>Feature seating</div>	<div>Armourstone seat wall</div>	<div>Picnic table</div>


Have your say!

Replace the bocce court with an outdoor fitness area


Many community members currently use the pathways in Alexander Elisa Park as a walking circuit, and a new fitness area would allow users to take their workout to the next level. Outdoor fitness equipment can range from simple, stationary features to a complete fitness circuit designed to provide a full body workout. Due to the proximity of this area to the playground, this space will include protective-fall-surfacing (engineered wood fibre).

Q9: What type of fitness equipment would you prefer to use?


Use one of the DOT  stickers to tell us your preference.

 **Stationary equipment:** Ground-based features that do not move and can be used for a variety of different exercises.



 **Climbable equipment:** Features that can be balanced on, hung from or climbed on.



 **Combo area:** A combination of stationary and climbable features that create a circuit to be used from start to finish.



Have your say!



4

Replace the bocce court with more play equipment

The existing playground at Alexander Elisa Park features a play structure, play panels, a rope climber and more. However, it lacks junior features suitable for children between the ages of two and five years old.

Could the community benefit from the addition of a junior play area? Or is there a desire for more play equipment for all ages? Share your thoughts!



Q10: What age range should the new play area be designed for?

Use one of the DOT ● stickers to tell us your preference.

Junior: Two to five years	Senior: Five to 12 years	Combination: Two to 12 years

Have your say!

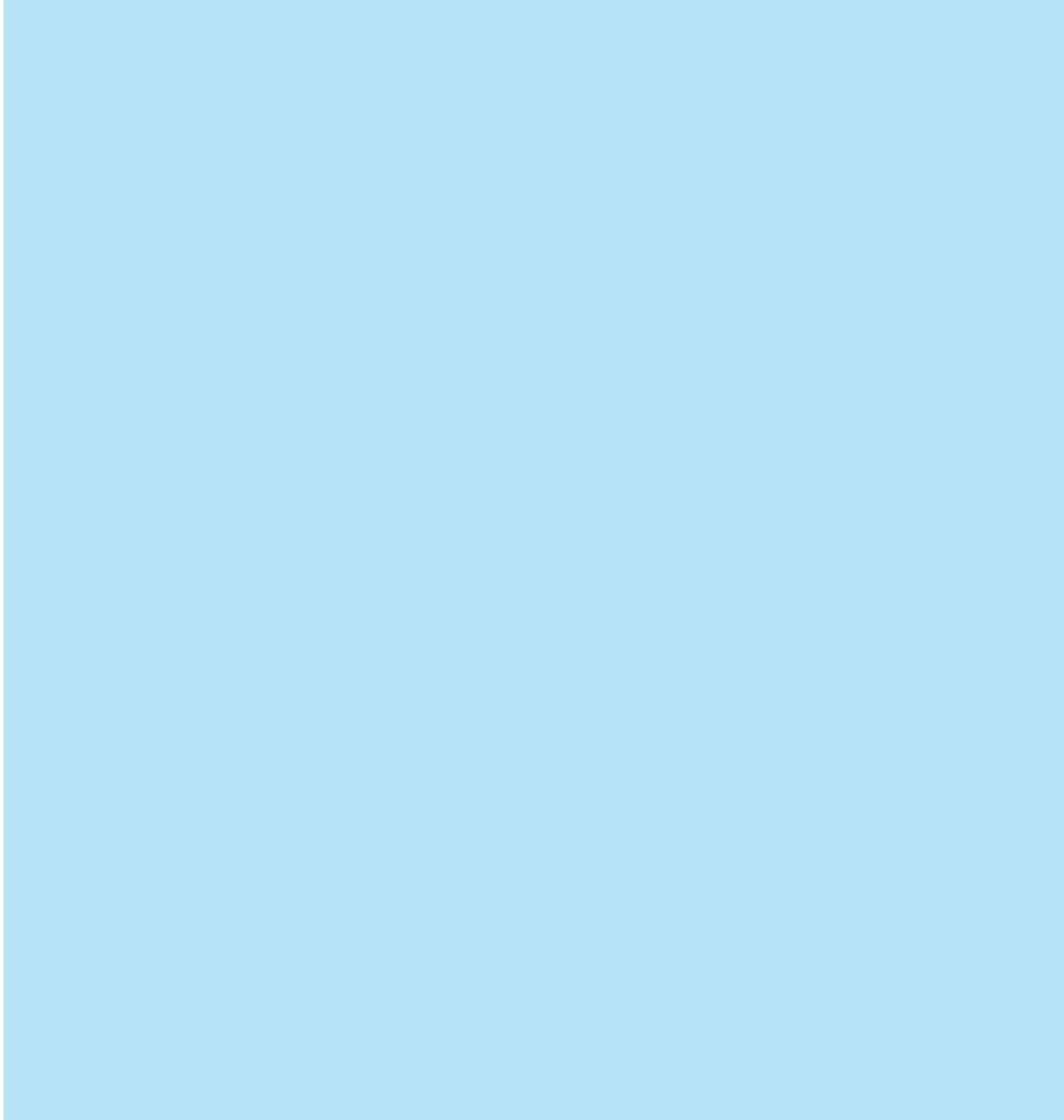
4

Replace the bocce court with more play equipment

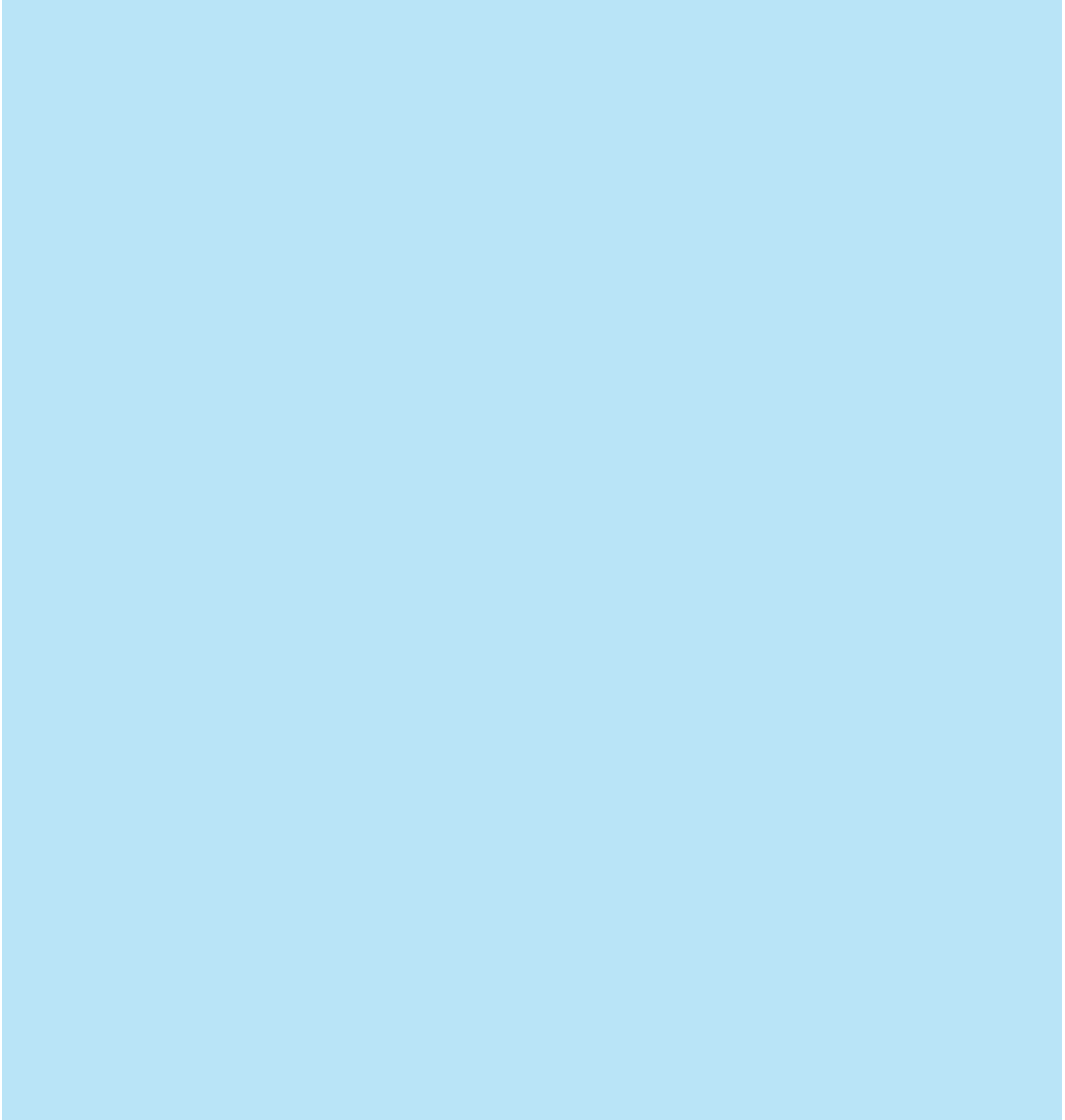
Q11: What style of play equipment do you prefer for Alexander Elisa Park?

Use one of the DOT  stickers to tell us your preference.

A Traditional play: Typically a steel structure with connected slides, swings, play panels, climbers and more. This style of equipment offers the greatest value per dollar.



B Rope play: Typically steel frames with primarily rope style play features in a number of different configurations. This style of equipment would offer slightly fewer pieces of equipment than traditional play.



C Additional swings: Up to three additional swing bays (each accommodating two swings) that include junior, senior and accessible swing seats.



Have your say!

5

Replace the bocce court with a community garden



Community gardens can be a great addition to a neighbourhood park as they provide an opportunity to get active outside and grow your own food while connecting with your community!

There are two potential models for community gardens that the City could follow: an allotment garden model and an organization-run model. Under the allotment garden model, individual gardeners would be provided with their own plot to plant in and maintain for a nominal fee (to support maintenance and the restocking of supplies). Alternatively, under the organization-run model, the community gardens would be operated by a community service organization or a non-profit organization. If the preference is the organization-run model, the City would need to conduct outreach to identify a suitable organization.

Q12: Would you be interested in using a community garden in the park?

Use one of the DOT ● stickers to tell us your preference.

Yes	No	Maybe
-----	----	-------

Q13: What is your preferred community garden model?

Use one of the DOT ● stickers to tell us your preference.

Allotment garden model - I want to rent a plot of my own	Organization-run model - I want a community group or non-profit organization to operate the community garden	No preference
--	--	---------------

Have your say!

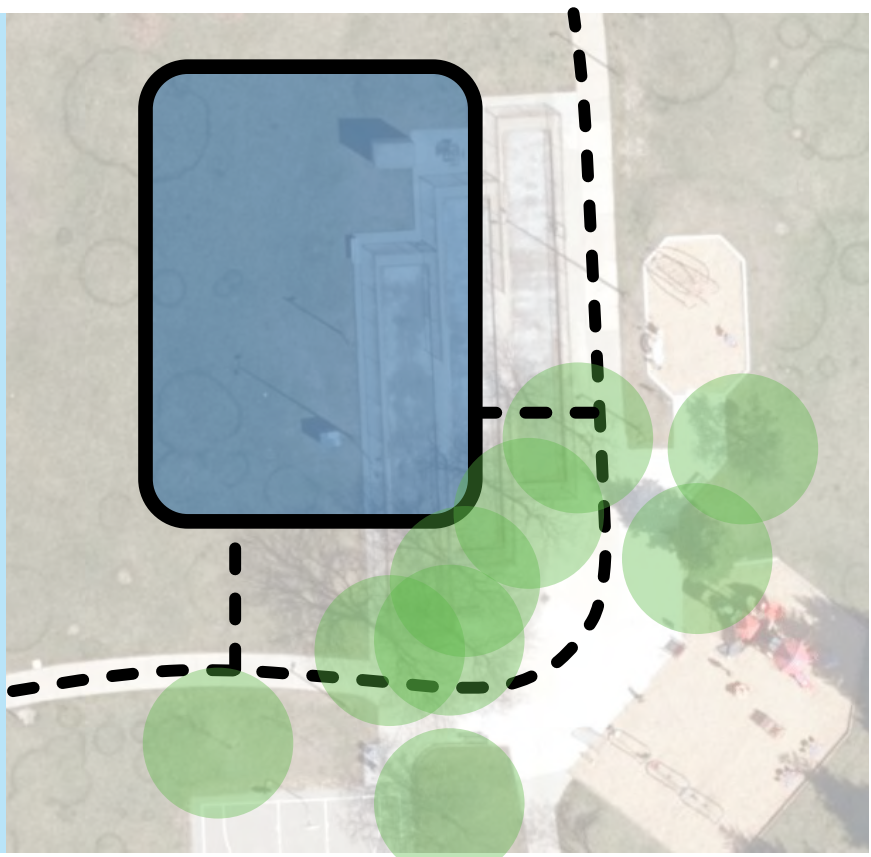


Q14: Now that you have reviewed the various design options, select up to three to let us know your preference.

Use your DOT ● stickers to select the three design options you like the best.



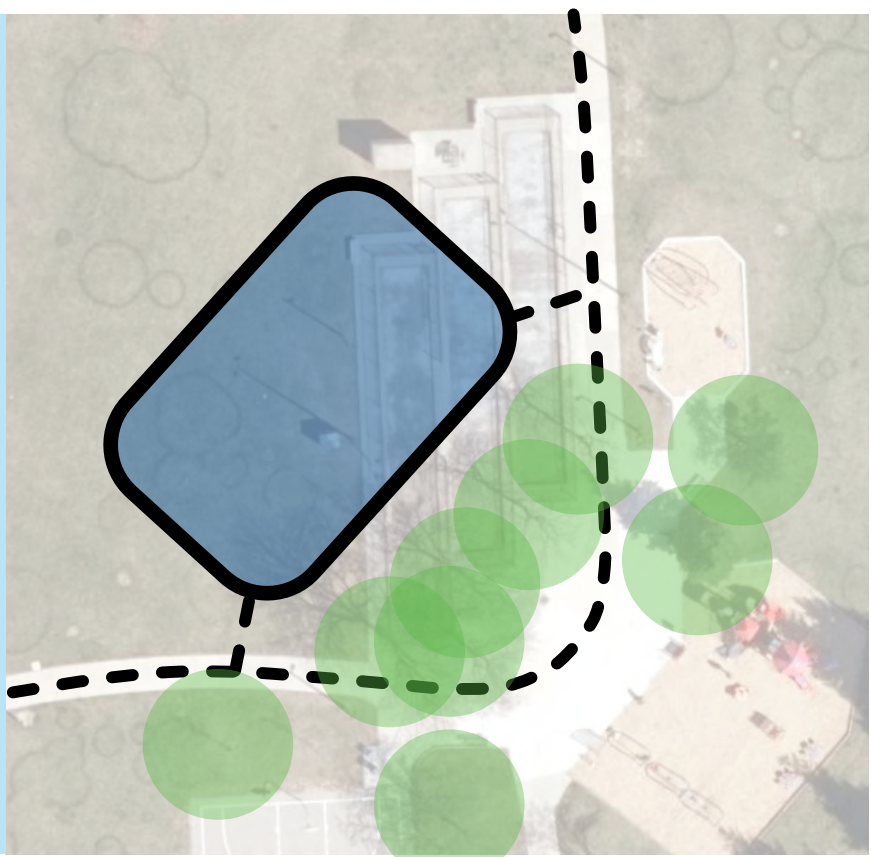
Renew the bocce court



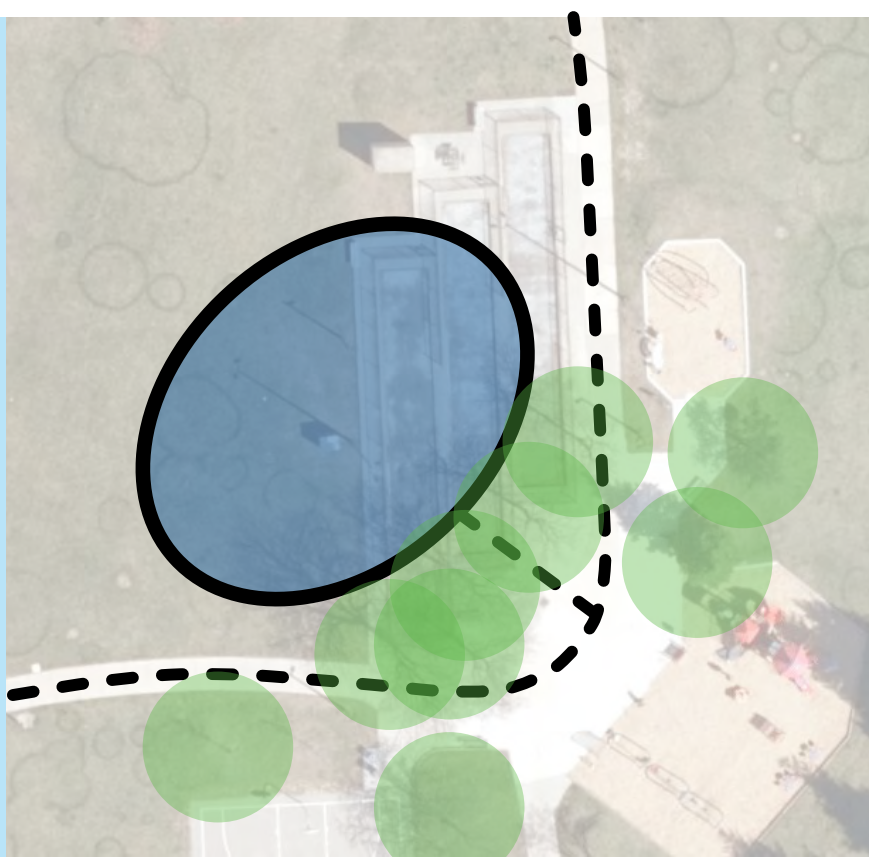
Replace the bocce court with a gathering space



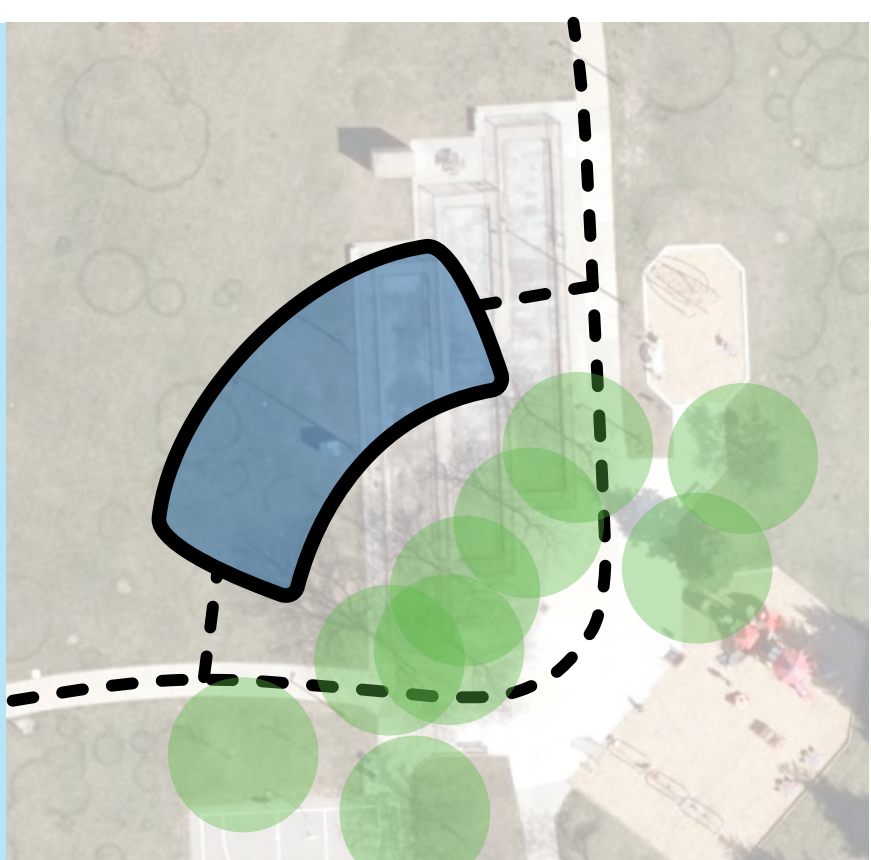
Replace the bocce court with an outdoor fitness area



Replace the bocce court with more play equipment

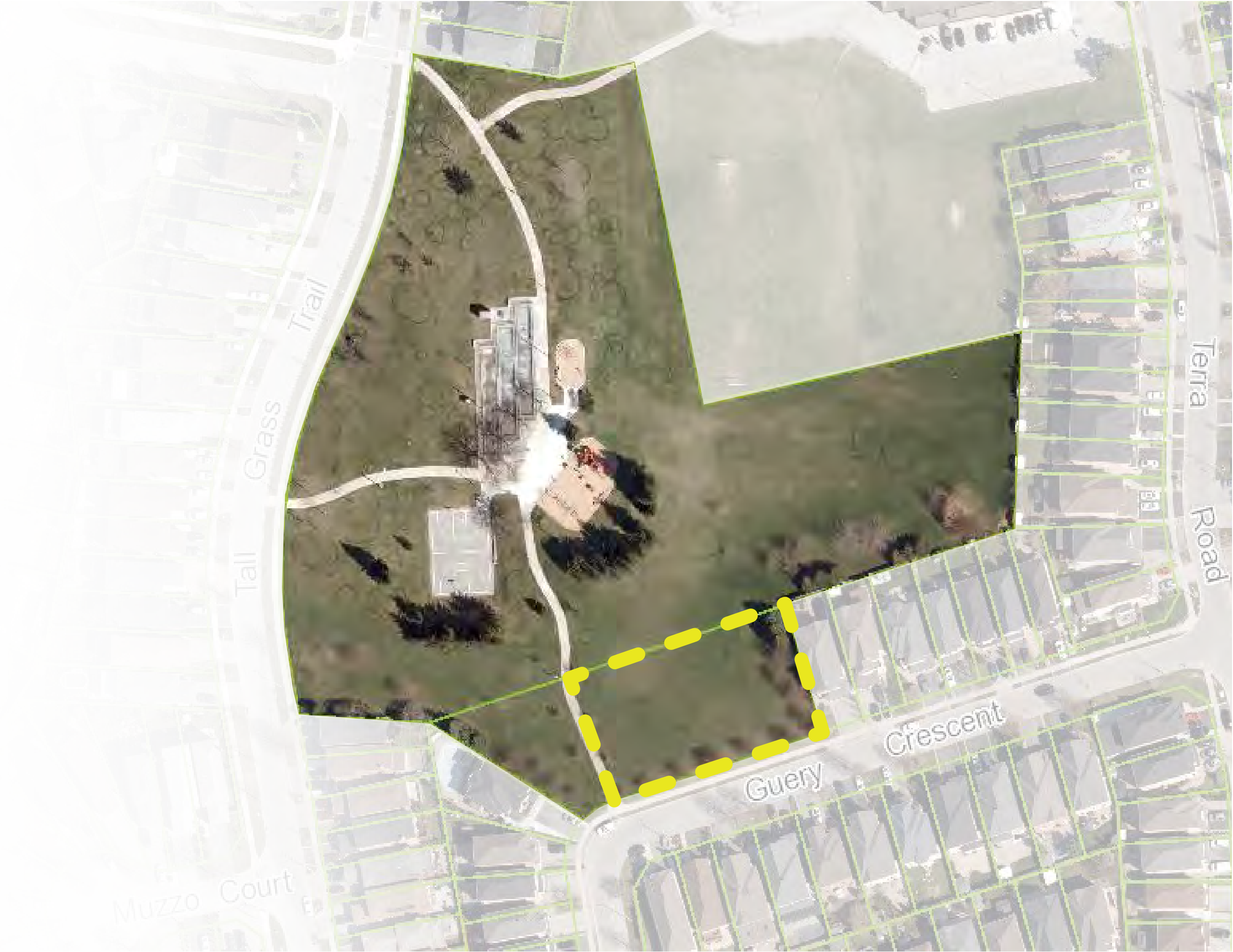


Replace the bocce court with a community garden



Future considerations for Alexander Elisa Park

The State-of-Good-Repair Program will only provide funding to renew or replace the bocce court at Alexander Elisa Park. However, there is an open area at the south end of the park that could potentially accommodate additional amenities, subject to future budget requests.



Q15: What future amenities would you like the City to consider for this area of the park?

Use a provided STICKY NOTE  to share your comments.





Thank you

**Thank you for participating in
the Alexander Elisa Park
Public Open House!**

Know someone who wasn't able
to attend? Encourage them to
participate in an online survey
available until Tuesday July 15.



Updates will be
posted to
vaughan.ca/parks
as the project
progresses.

QUESTIONS

Mandy Wellsman, Project Manager
mandy.wellsman@vaughan.ca