

# Black Creek Renewal Initiative



## Background

- Historical flooding in the study area triggered the need for significant infrastructure improvements
- The City initiated the Black Creek Renewal Municipal Class Environmental Assessment in 2012
- The construction phase of the Black Creek Renewal Project is expected to commence in 2026

## Project Objective

- The primary objective is to advance the design for the six projects within the Black Creek Renewal Initiative
- Completion of the six projects will collectively:
  - ✓ Reduce future flooding in the Black Creek Corridor study area
  - ✓ Improve water quality and stream bank erosion
  - ✓ Enhance natural heritage system and public realm
  - ✓ Emphasize active transportation within the area

# Overview of the Project Components

This project consists of 6 integrated components (A – F).



## Project Components:

- A: Edgeley Pond and Park
- B: Edgeley Pond and Park - Pedestrian Bridge
- C: Plateau and Plaza
- D: Jane Street Streetscape North
- E: Highway 7 Culvert Improvements
- F: Black Creek Renewal

# Component A: Edgeley Pond & Park

## The Vision of the Park

- To become the heart of the Vaughan Metropolitan Centre
  - Creation of an open and innovative public space
- Improvement to stormwater management infrastructure
  - Optimization of ecological habitat



## Objectives

- Improve stormwater management and stream corridor functional design
  - Improve ecological function and provide functional natural habitats
    - Generate spaces for active and passive recreation
    - Showcase design innovation
- Enable further development of Vaughan's Downtown



# Edgeley Pond & Park Exemplary Features



(A) Edgeley Pond & Park Pedestrian Bridge Looking East



(B) View of Green Design Features Looking South



(C) View of Edgeley Pond & Park Looking North



# Component B: Edgeley Pond and Park Pedestrian Bridge

*The Iconic Highlight of the Vaughan Metropolitan Centre*



## Objectives

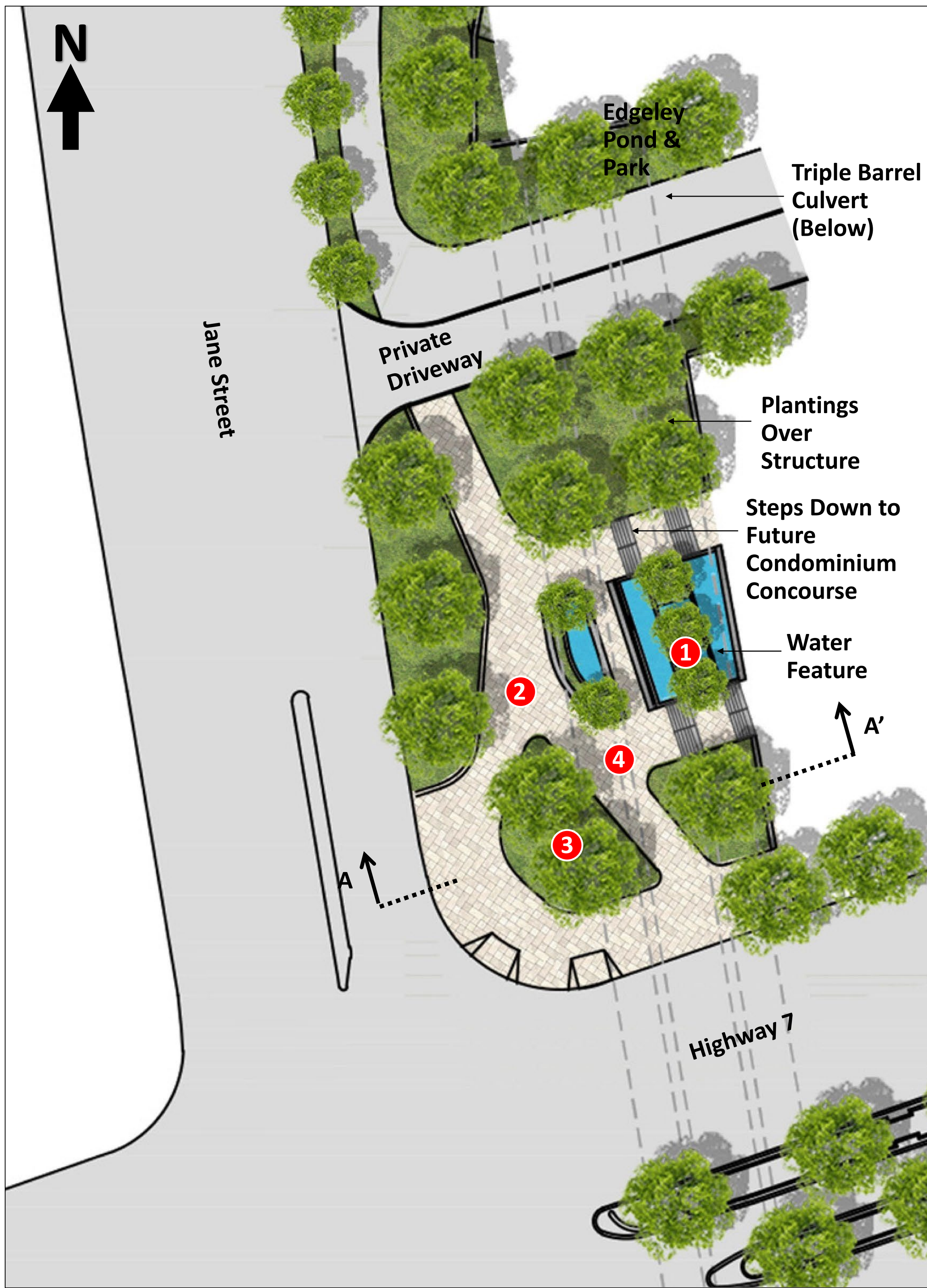
- Provide pedestrian access from Maplecrete Road to Jane Street through the Edgeley Pond and Park
- Reflect an iconic character within the Vaughan Metropolitan Centre

## Design Features

- Three spans to balance function and form; elegant design appearing lightweight in nature
- High-quality finishes in the handrail, guardrail and decking designed for accessibility, longevity and durability
- Overlook area within the existing forest canopy with a rest area and a space from which to view the park



# Component C: Plateau & Plaza

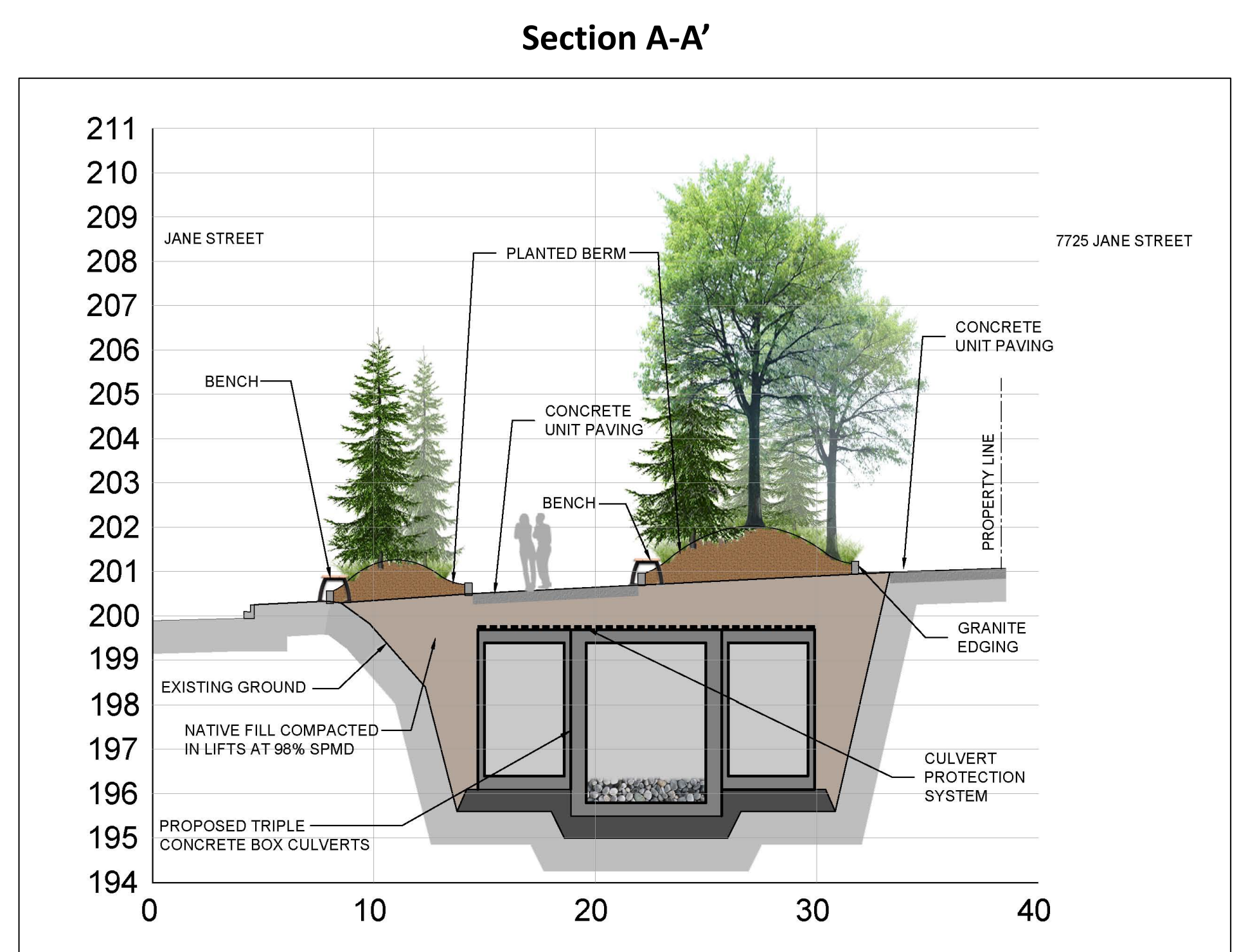
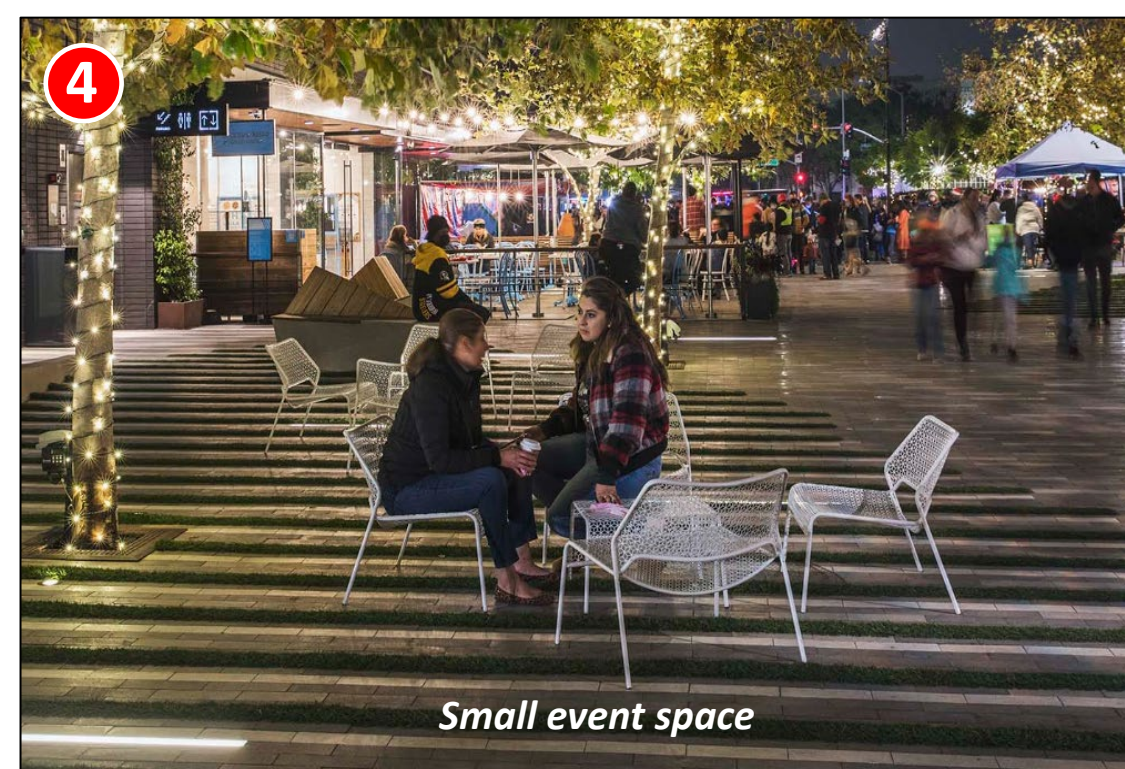
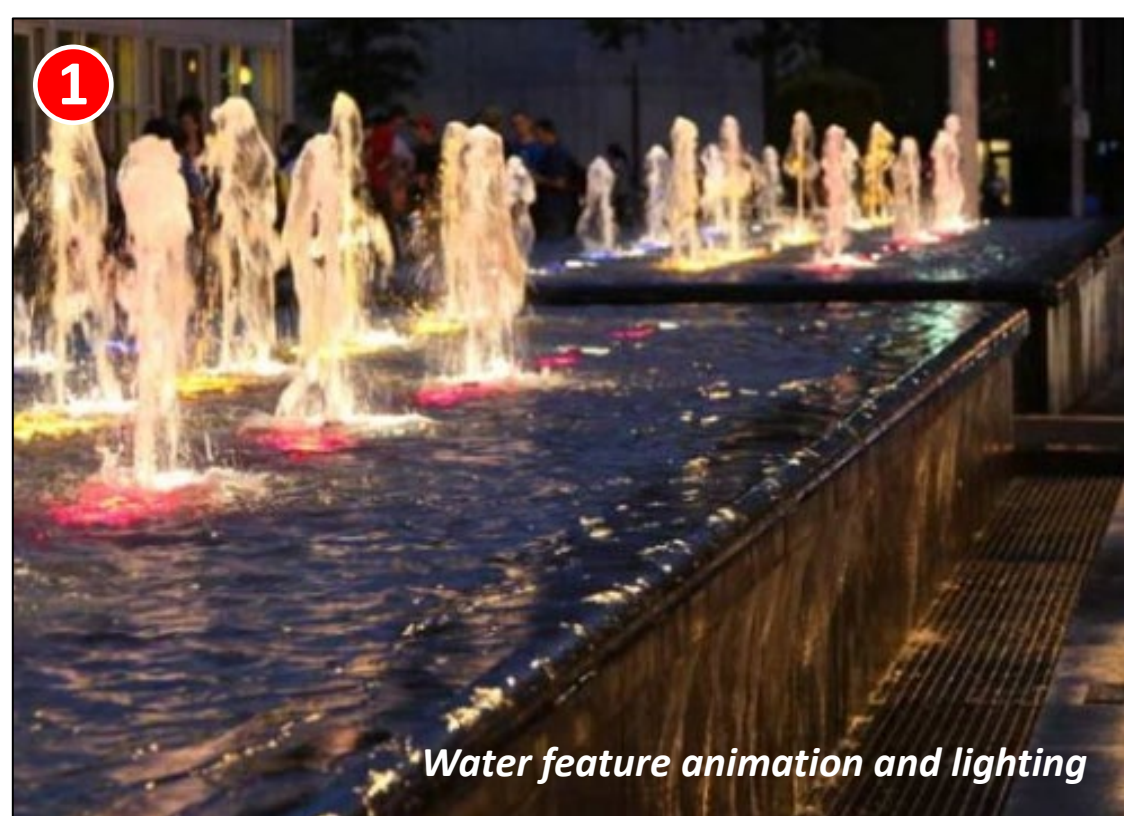


## Objectives

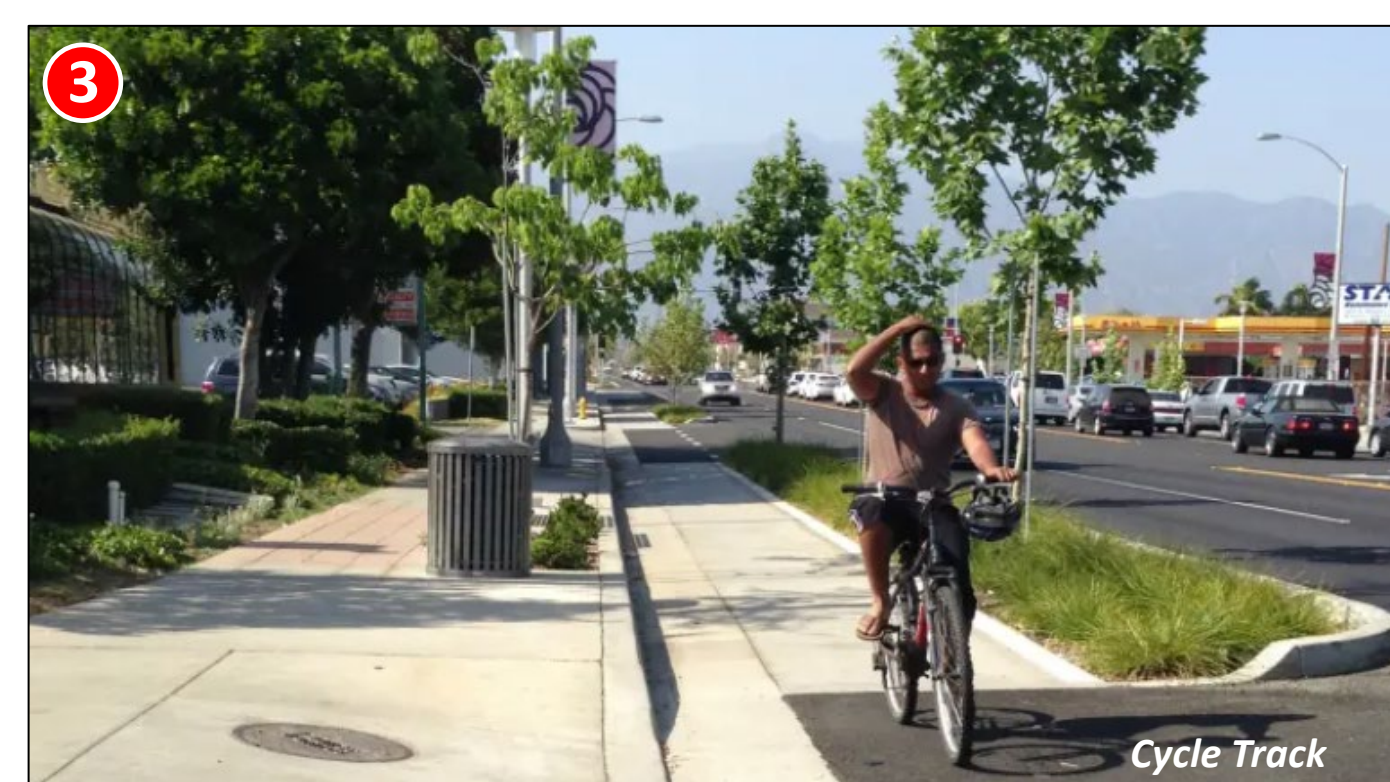
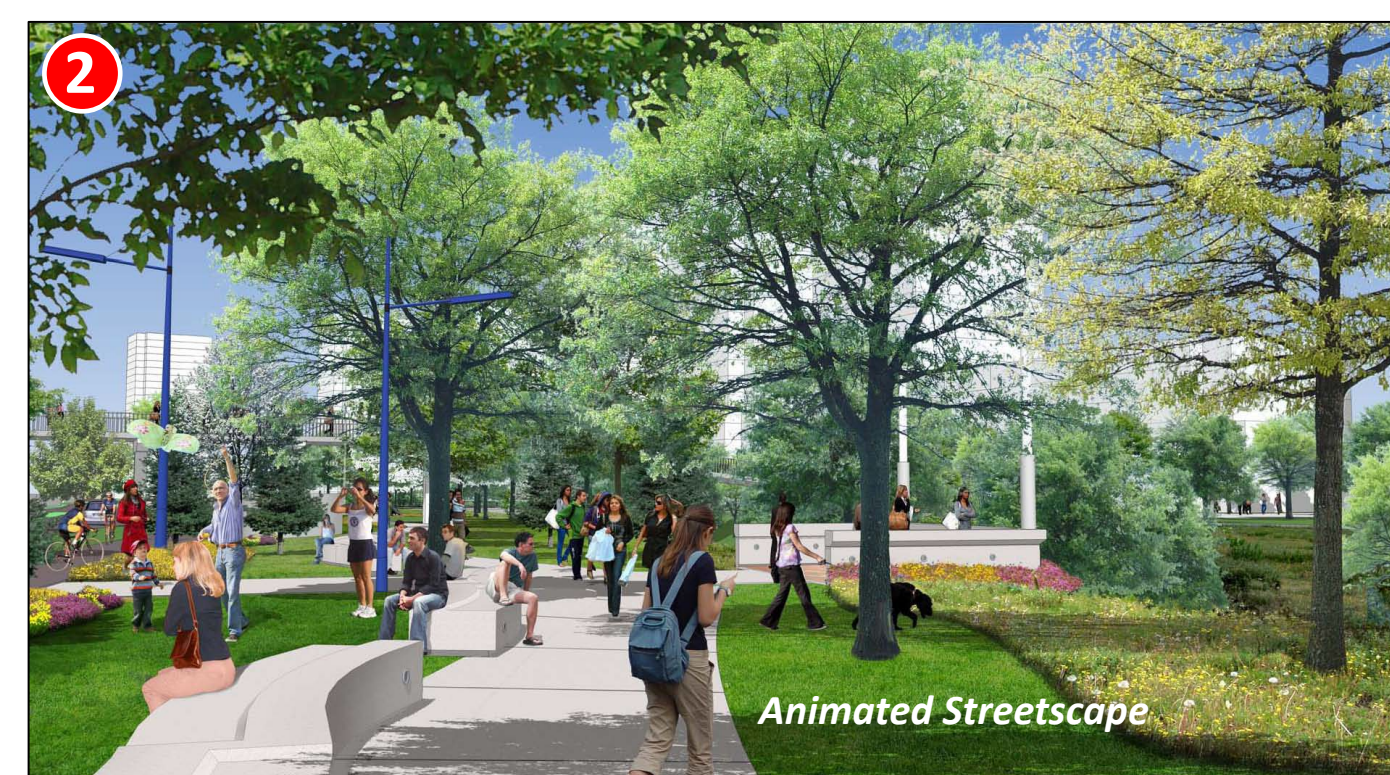
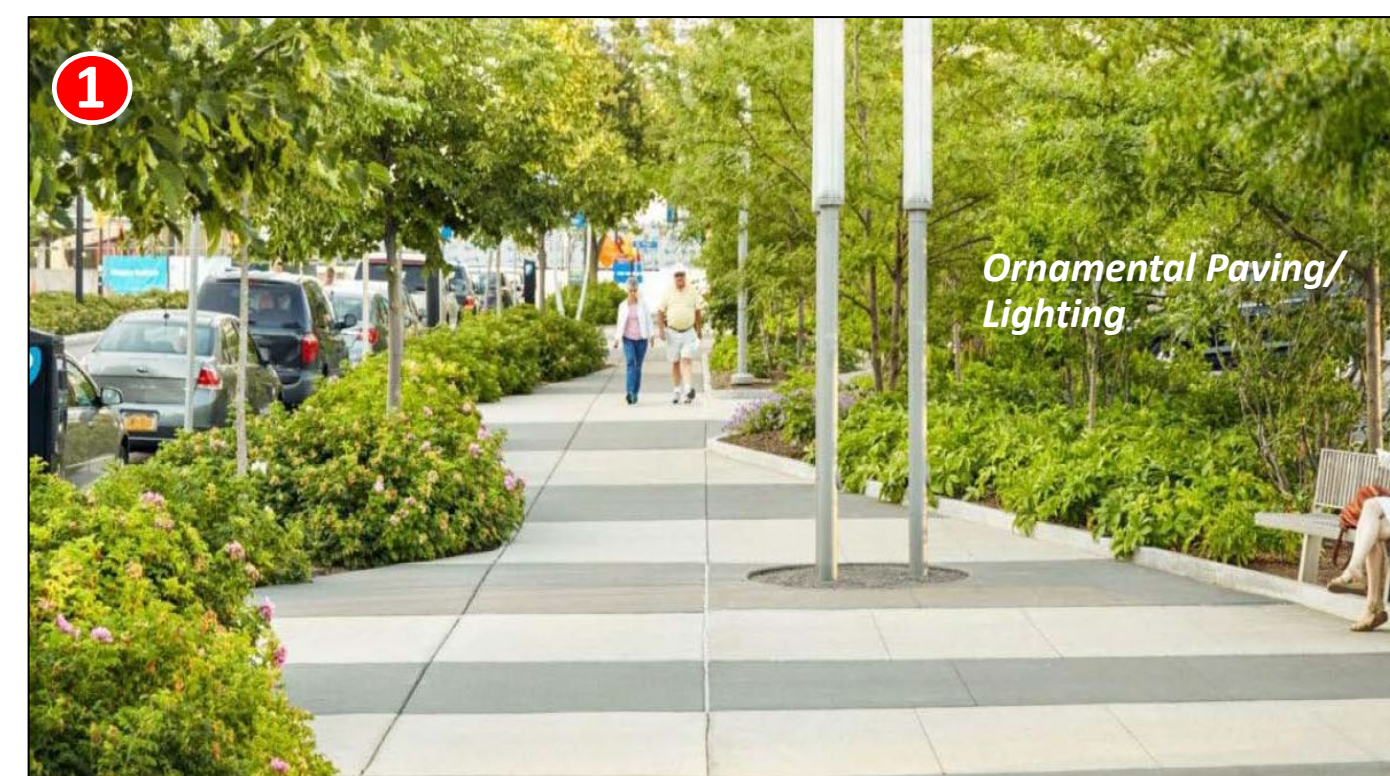
- Provides integration of the Edgeley Pond & Park trails with pedestrian traffic at the intersection of Highway 7 and Jane Street

## Design Features

- Active transportation facilities are integrated into the design between planting nodes
- Seating and a terraced water feature provide for interest and accent
- The landscape features are designed with the triple barrel culvert below in mind
- Sufficient space to accommodate large volume of users at the intersection
- The plaza enables an opportunity to view the park at the south end



# Component D: Jane Street Streetscape North



## Objectives

- The streetscape seamlessly integrates with the Edgeley Pond & Park
- Multi-Use Pathways connecting to key walking and cycling routes along Jane Street

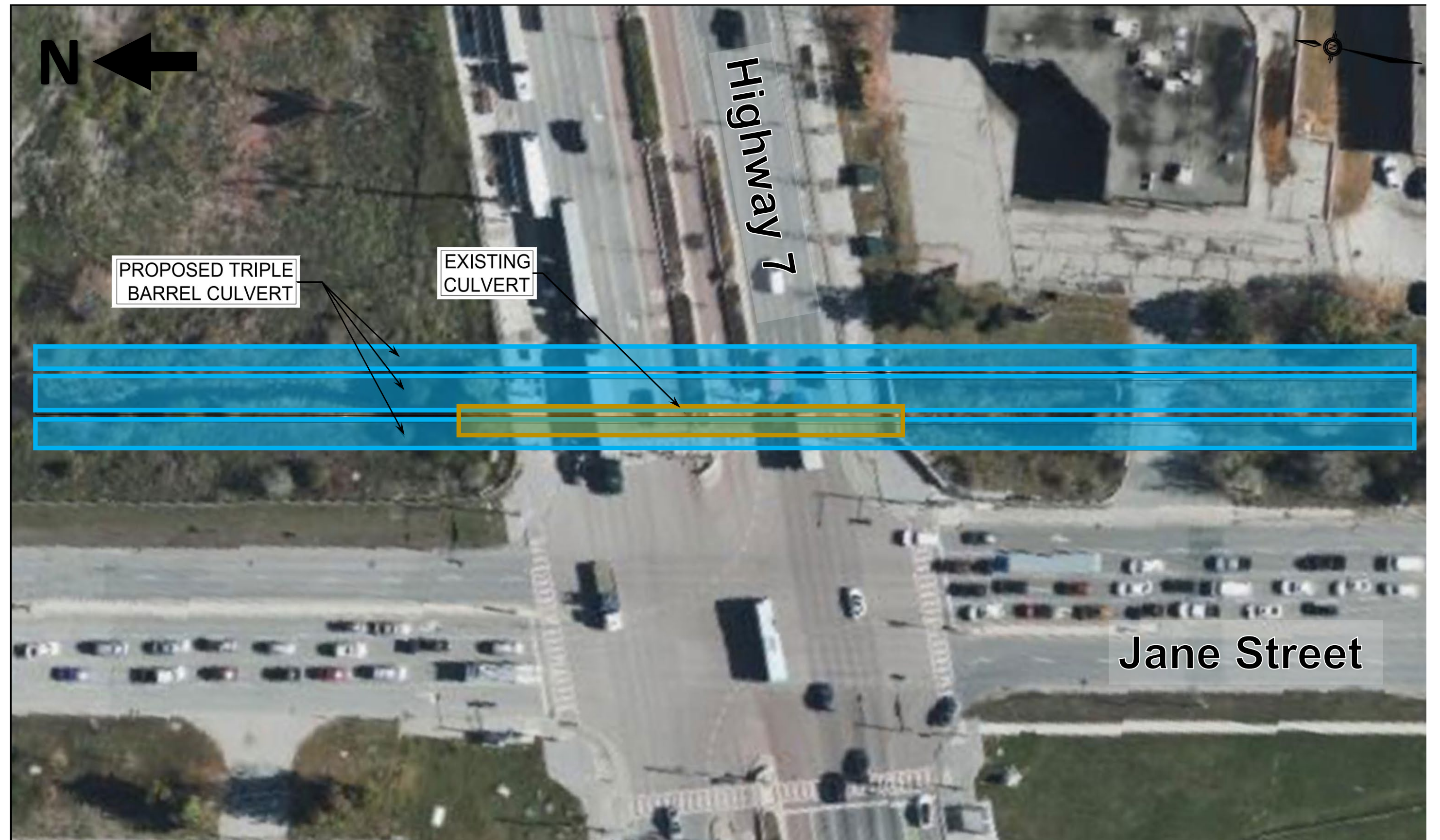
## Design Features

- Creates opportunities for east-west connections through the Edgeley Pond & Park, as well as other destinations on the west side of Jane St in the VMC
- Consistent streetscape aesthetic along Jane Street provides continuity between Black Creek Renewal and Edgeley Pond & Park
- Pedestrian lighting along the pathway provides safe use of the street at night

# Component E: Highway 7 Culvert

## Background

- The existing culvert under Highway 7 does not provide adequate flow conveyance
- The existing culvert will be replaced and extended to accommodate future initiatives within the Plateau and Plaza as well as lands south of Highway 7



## Location of Crossing

- The new culvert extends across Highway 7 as well as spanning the Plateau and Plaza to the north and the private property to the south

## Objective

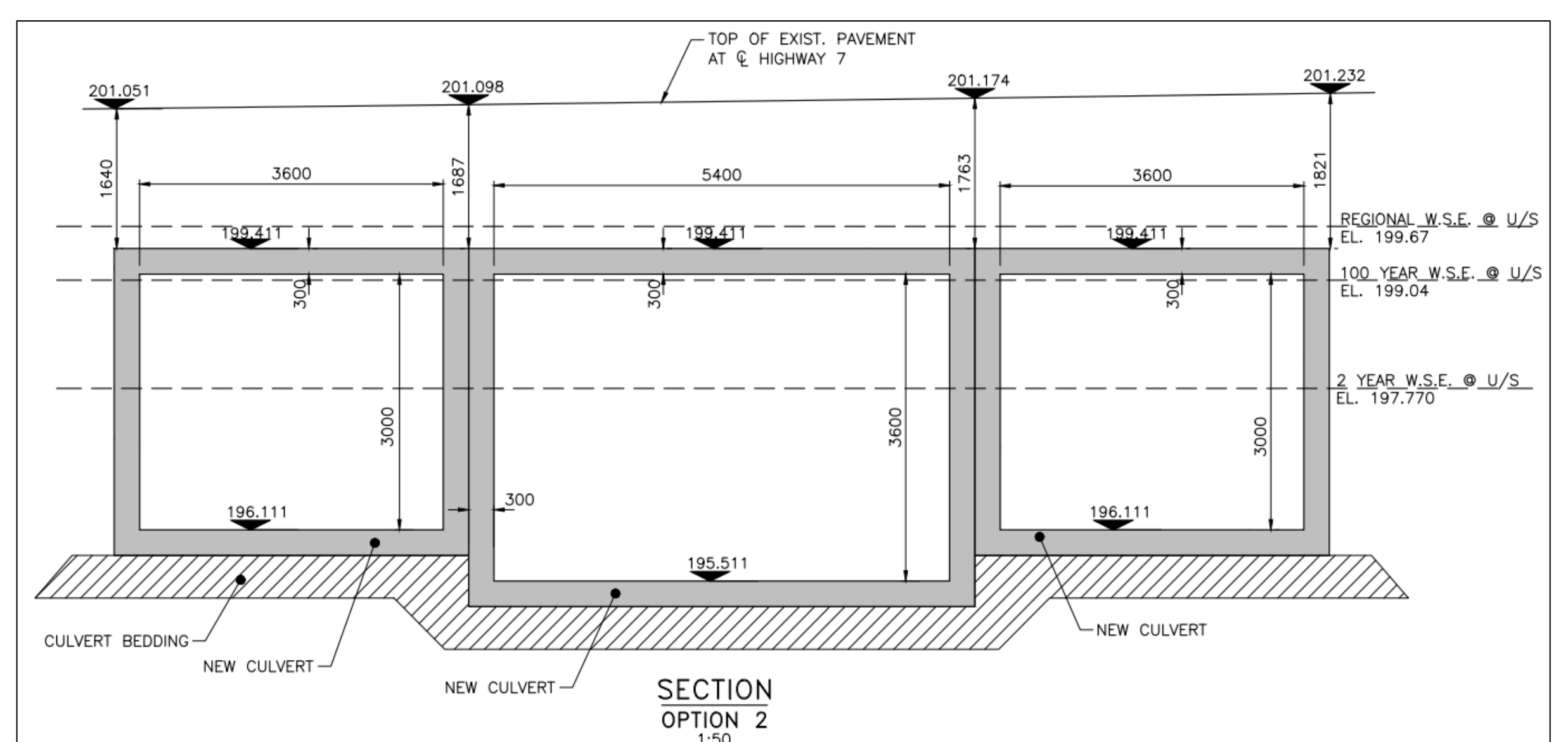
- The new culvert will provide flow conveyance for infrequent flows thereby reduce flooding along the Highway 7 and Jane Street area
- The culvert configuration will accommodate natural features such as a low flow channel with naturalized substrate to enhance fish passage opportunities



Facing north looking at existing Highway 7 culvert flowing south

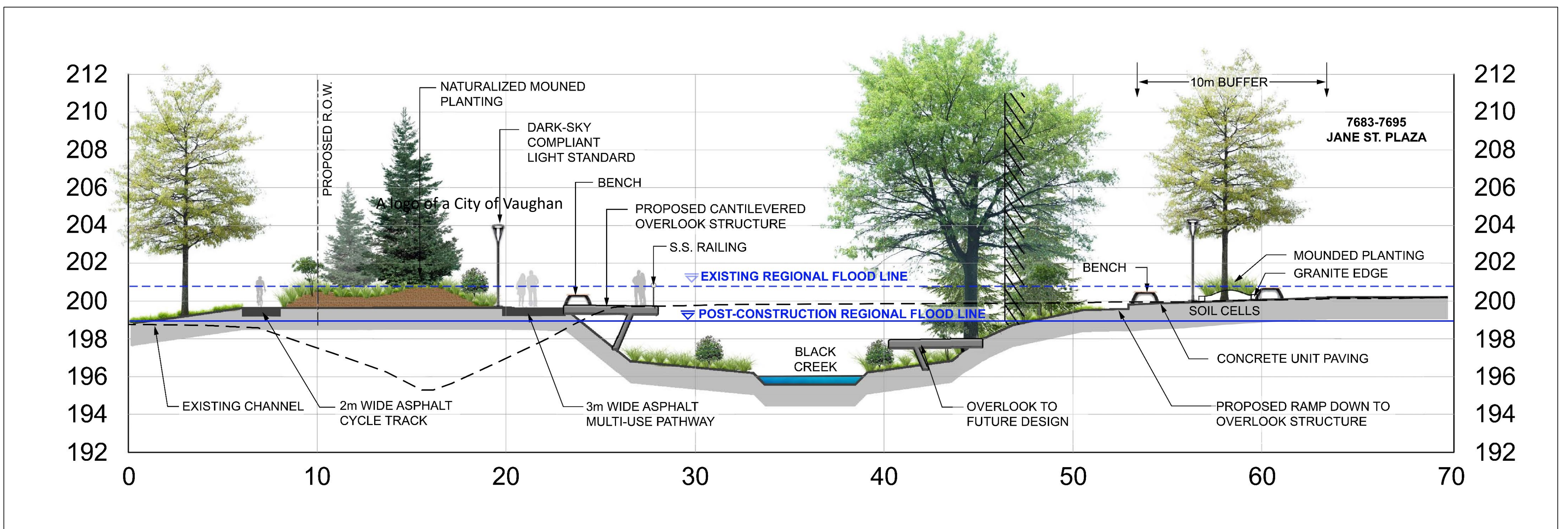
## Proposed Cross Section & Plan

- The accompanying graphic illustrates a cross section of the proposed three culverts under Highway 7





# Component F: Black Creek Renewal



## The Objectives of the Black Creek Renewal Component Include:

### Improving Public Realm

- Experience the integration with nature through lookouts, park seating, concrete terraced seating & gazebos

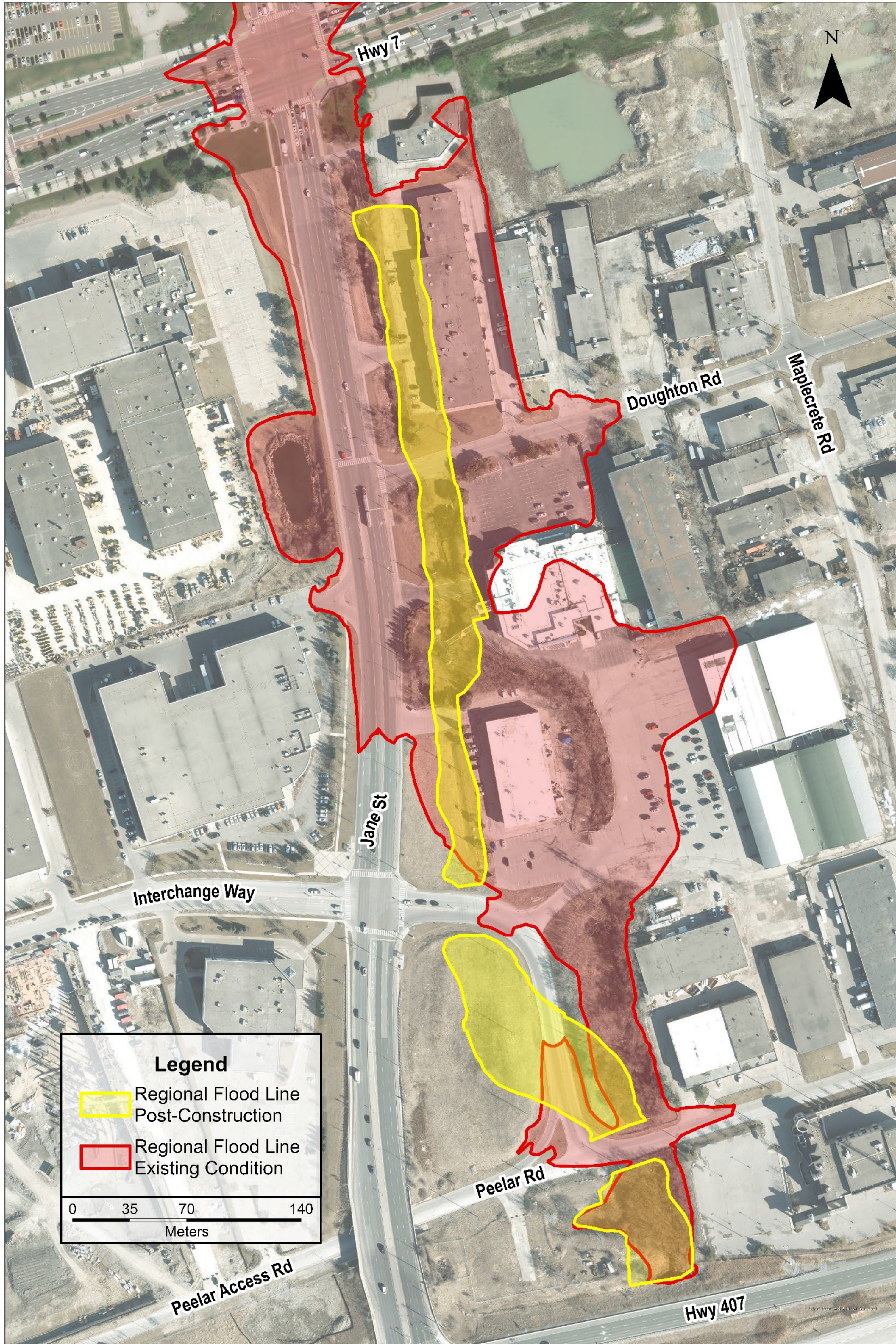
### Reducing Flooding

- Improved capacity to carry large volumes of water through a naturalized channel

### Promoting Active Transportation

- Cyclist & pedestrian use through urban and naturalized trail systems

# Black Creek Renewal Flood Lines



## Objective

- Construction of the Black Creek Renewal channel will reduce the limits of flooding as shown in the proposed conditions (yellow)

## Existing Conditions

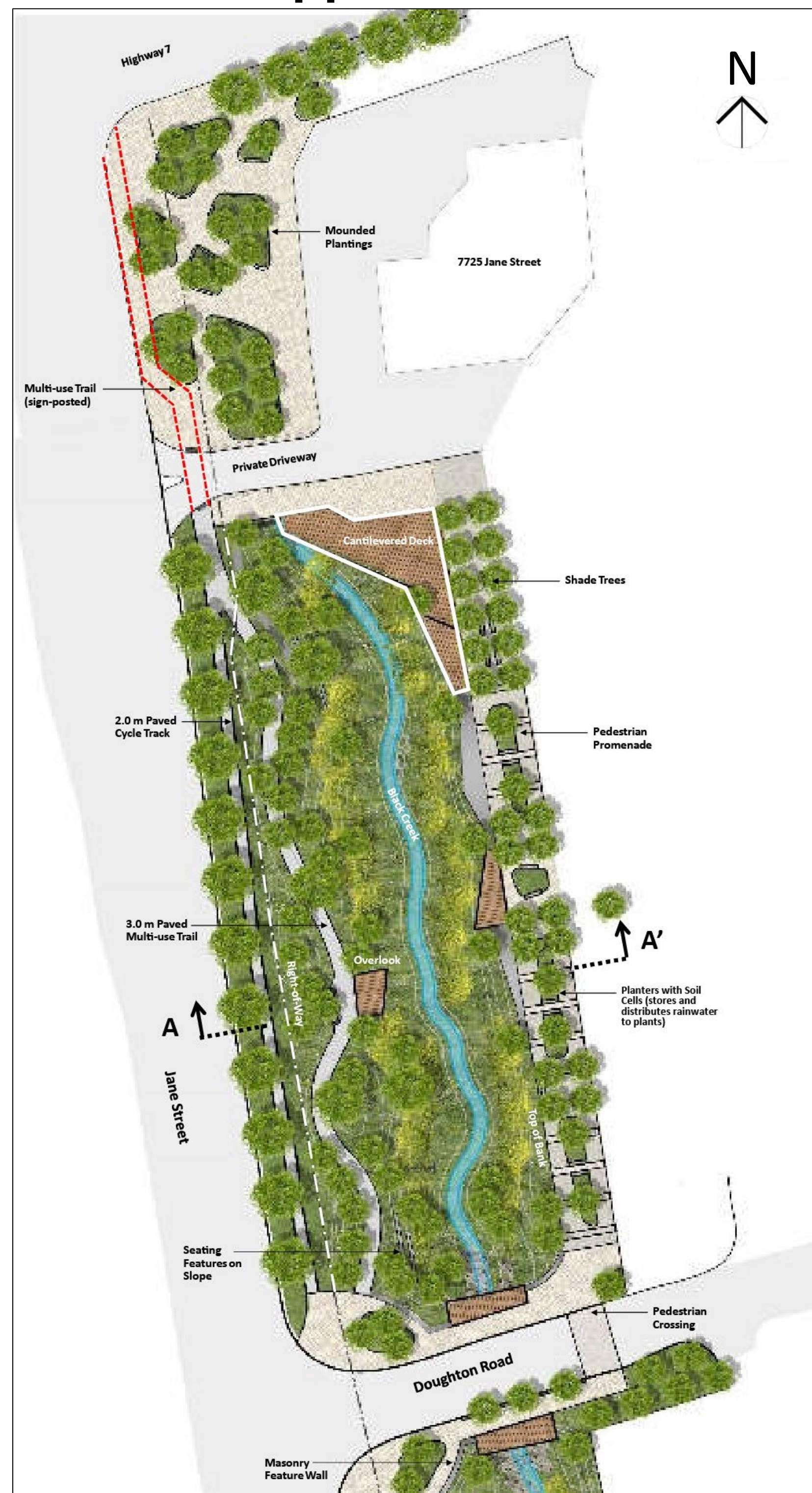
- Considerable extents of the project area are flooded, including overtopping of Jane Street

## Proposed Conditions

- The post-construction flood line will be contained within the Black Creek Renewal Channel

# Black Creek Renewal – Project Reach

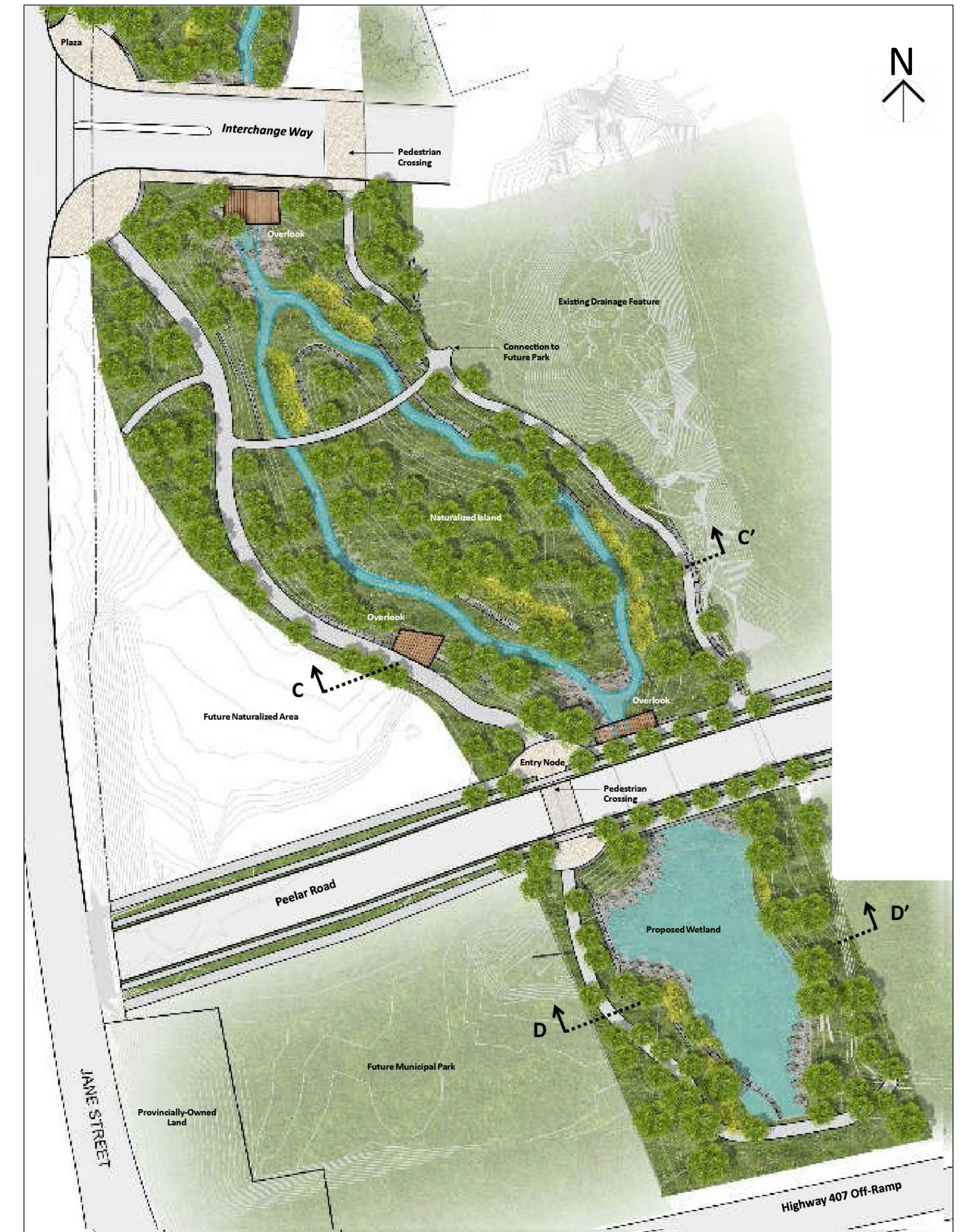
## Upper Reach



## Middle Reach

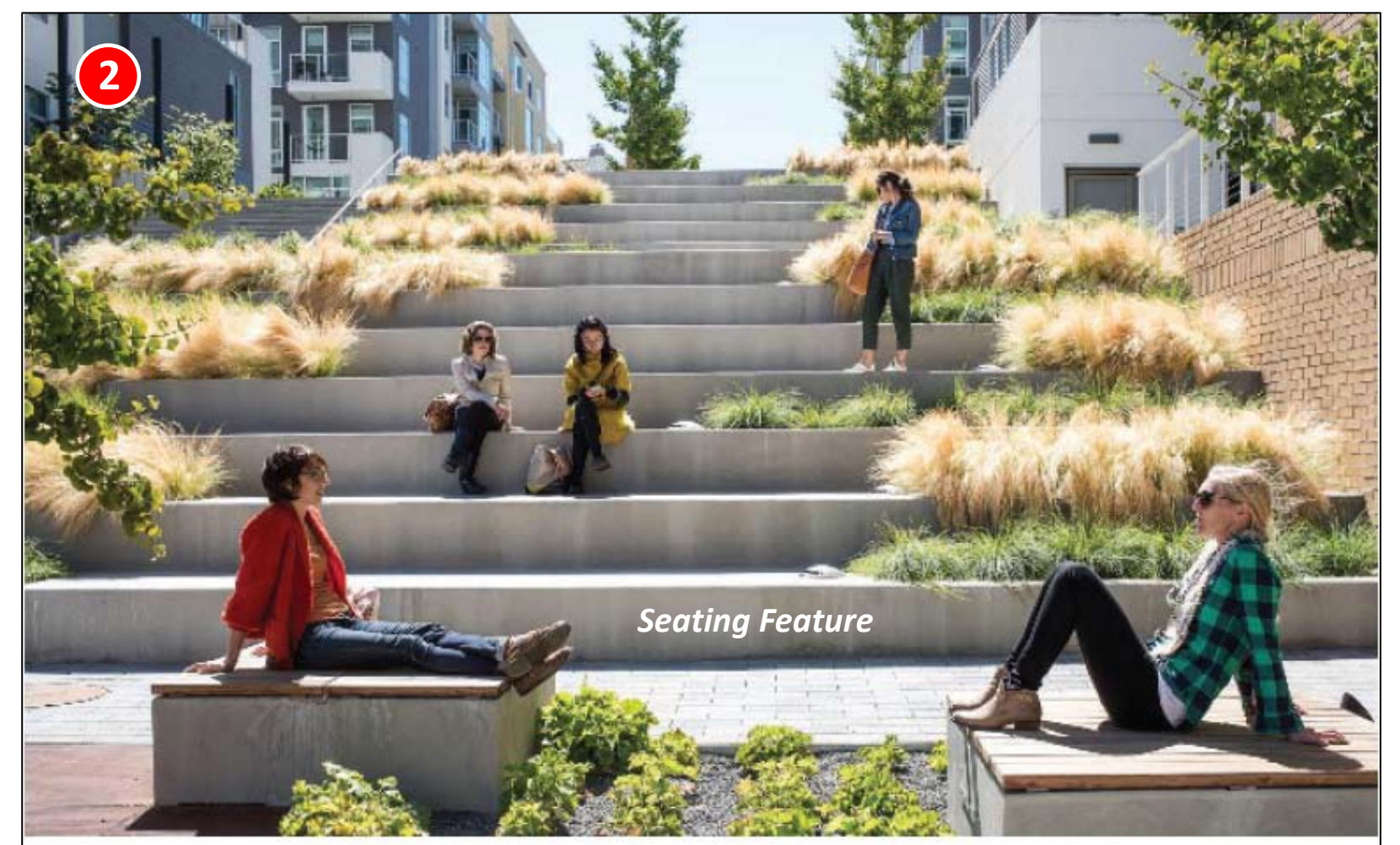
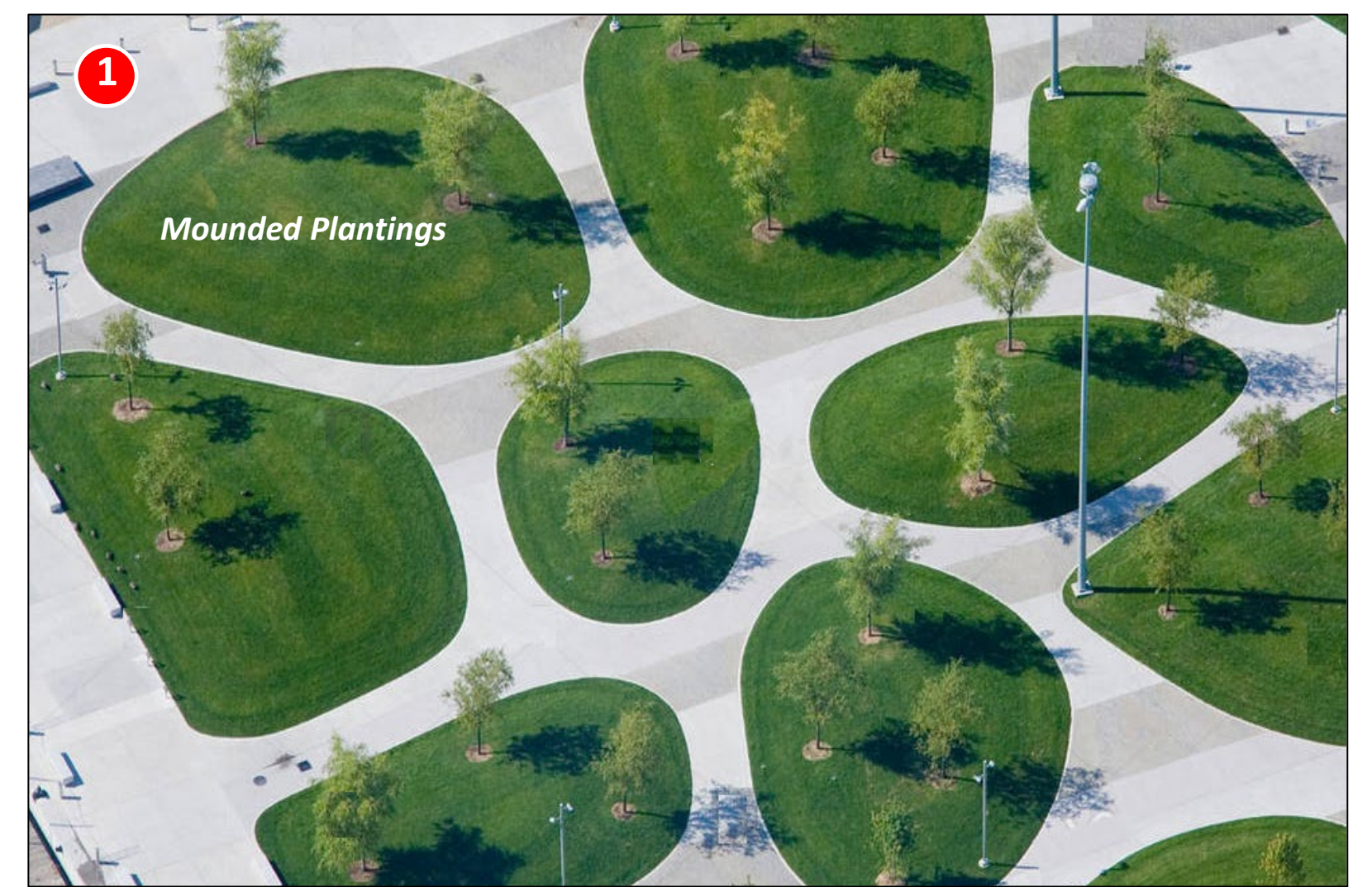
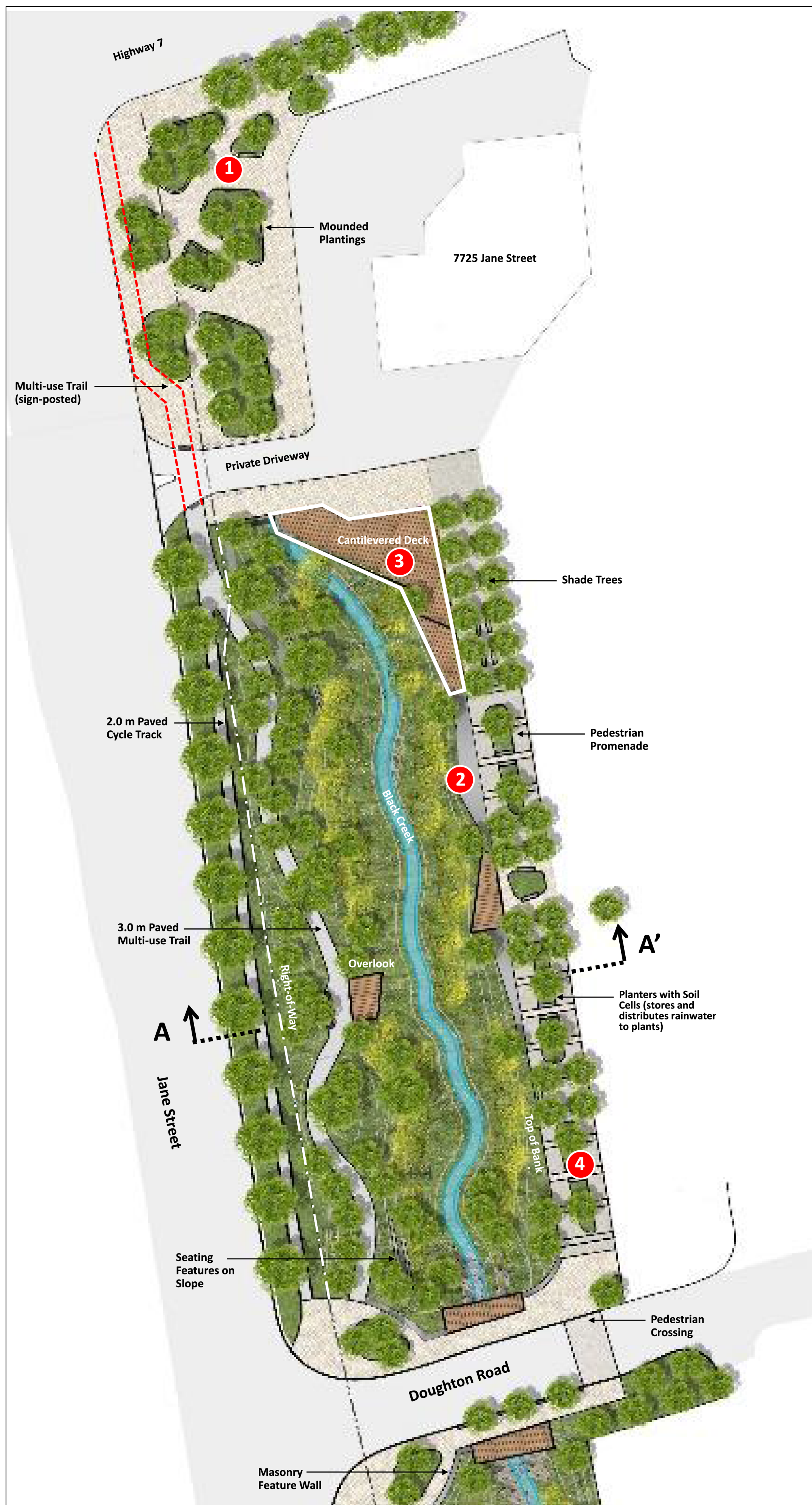


## Lower Reach

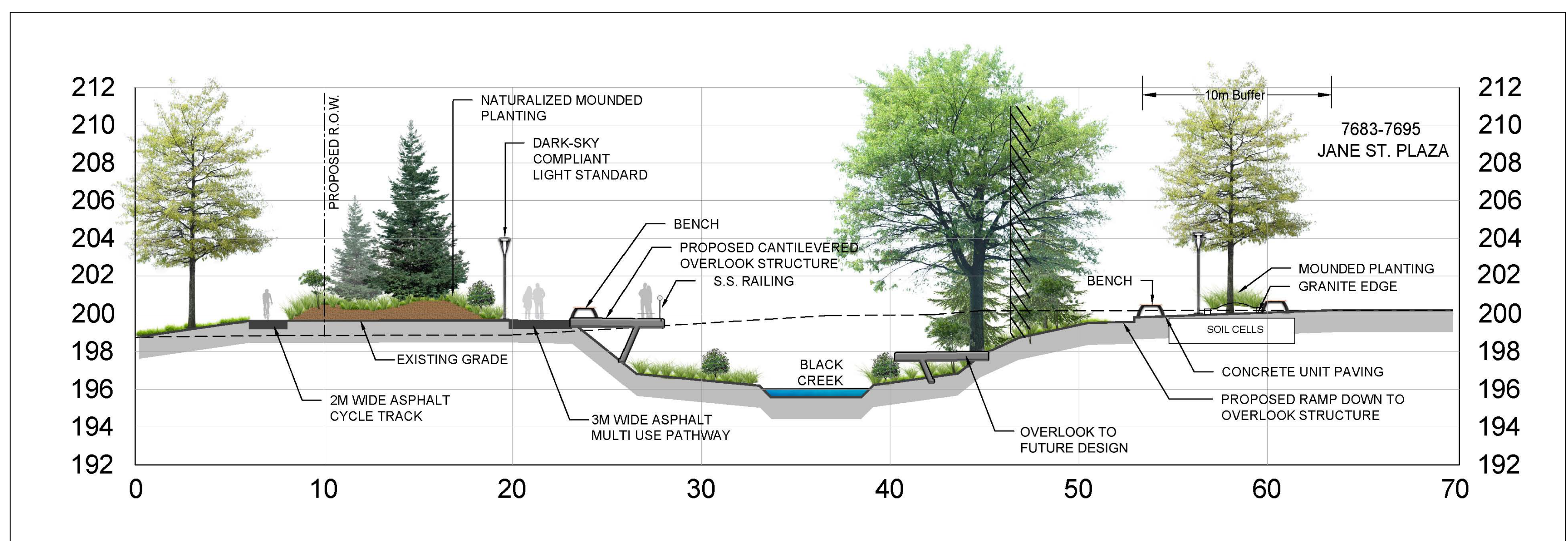


- The Black Creek Renewal project is comprised of three reaches as upper reach, middle reach and lower reach
- The upper and lower reaches will be built to ultimate EA recommendation
- The middle reach will be constructed to accommodate existing constraints

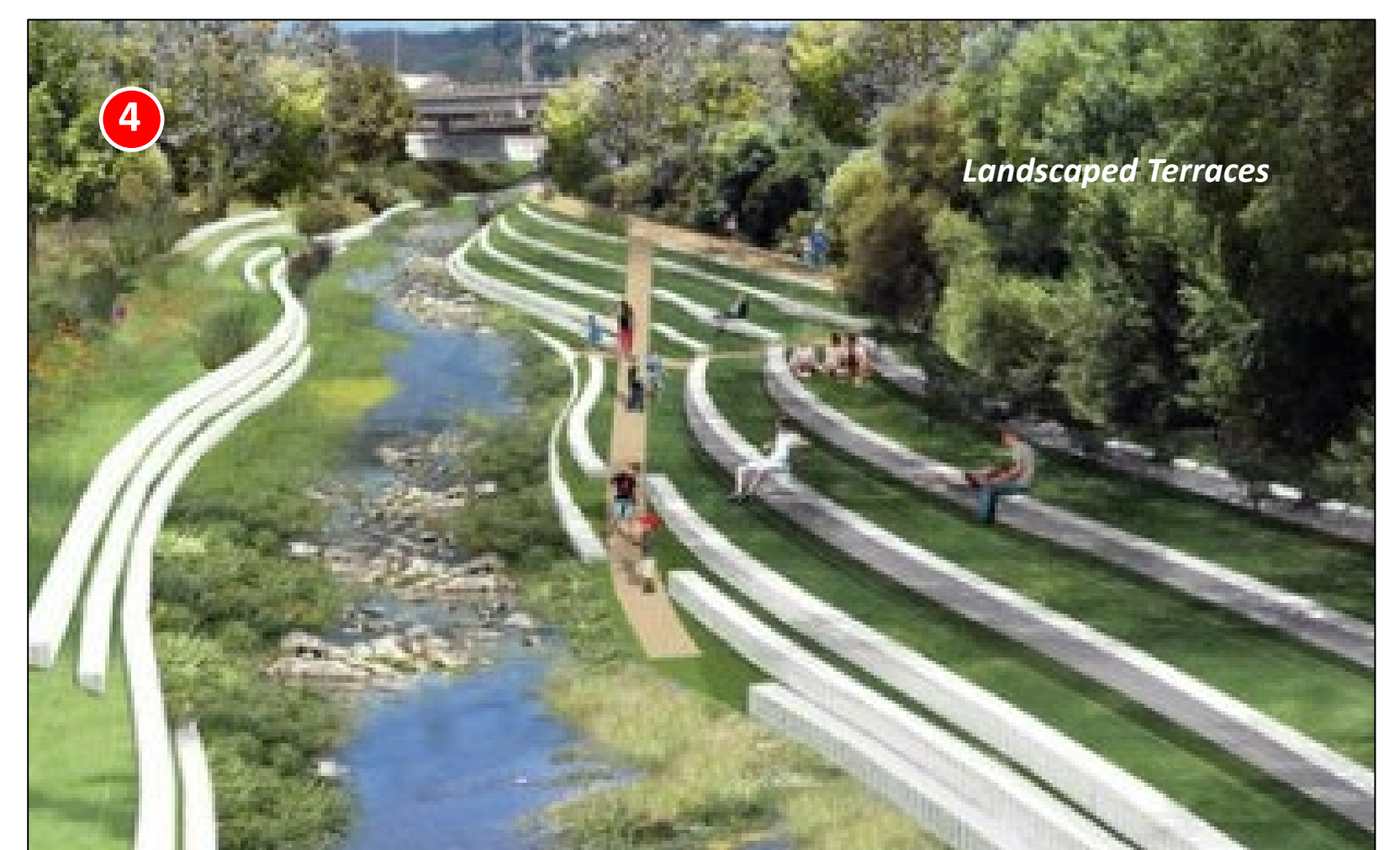
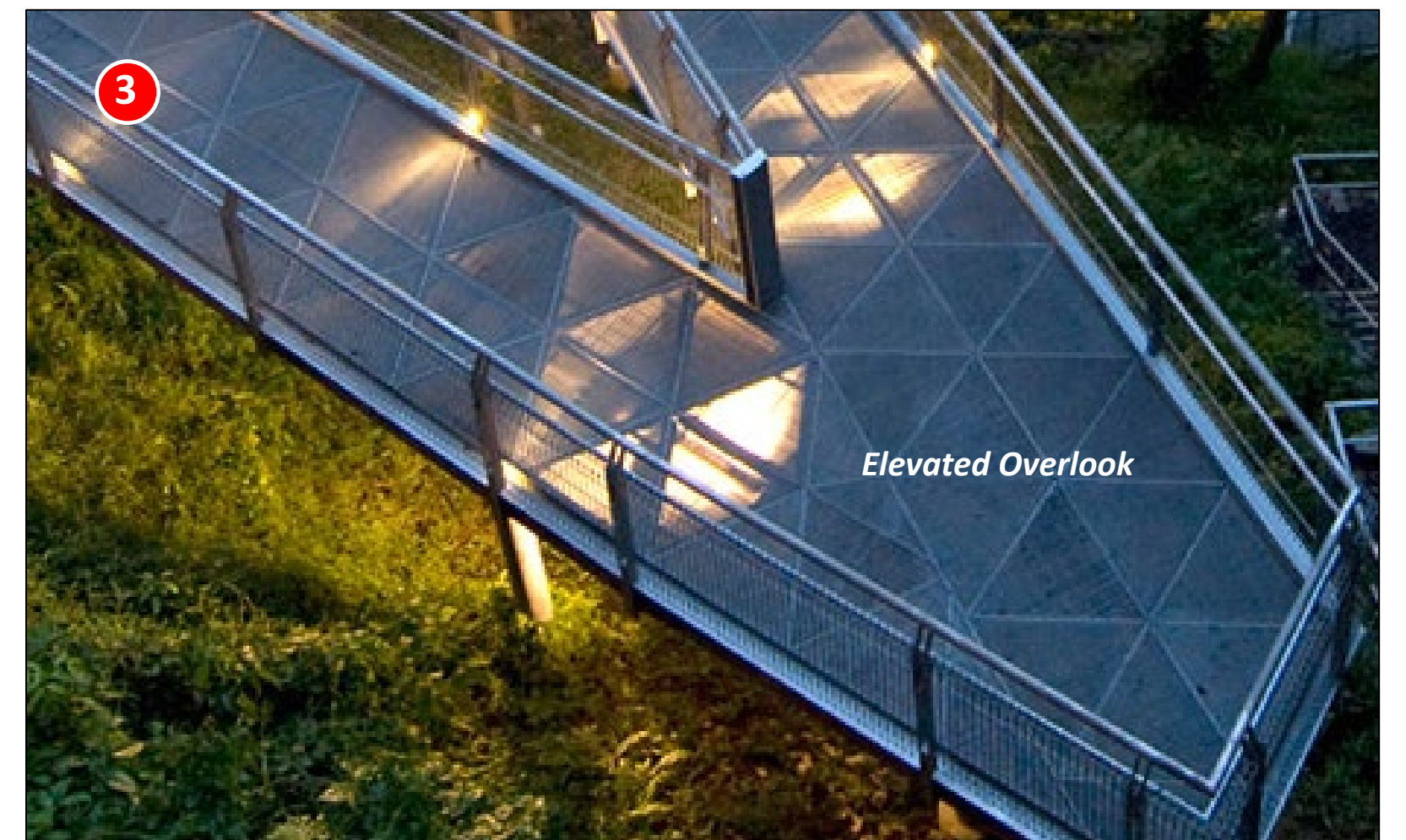
# Black Creek Renewal Doughton to Highway 7 Plan and Cross Section (Upper Reach)



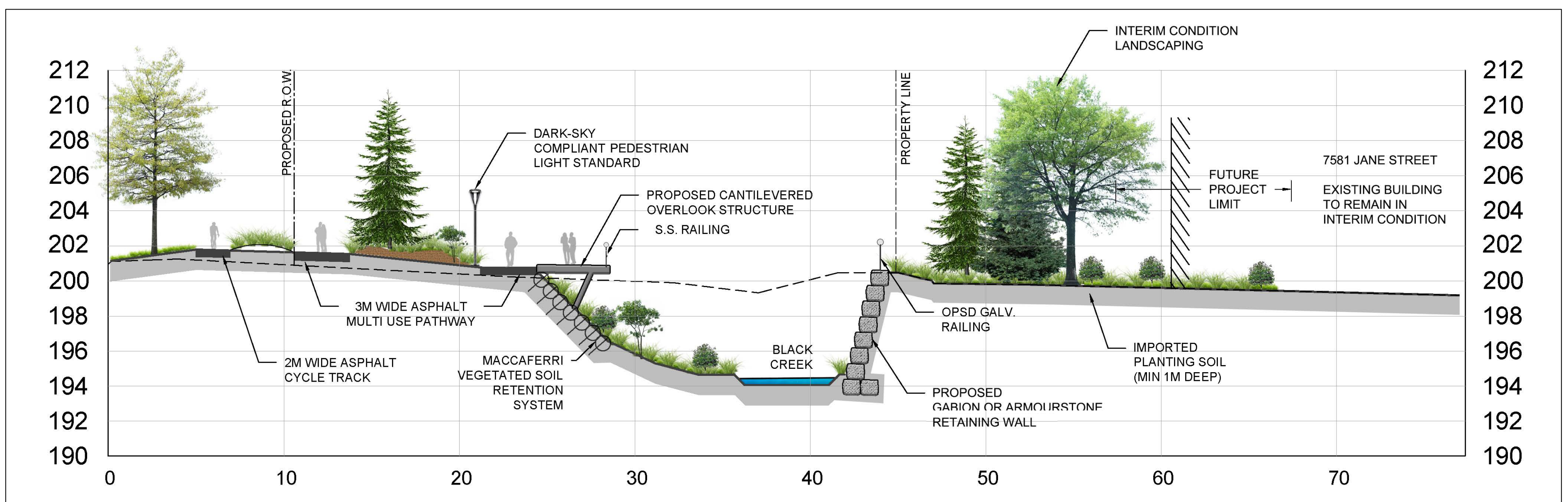
Section A-A'



# Black Creek Renewal Doughton to Interchange (Middle Reach)



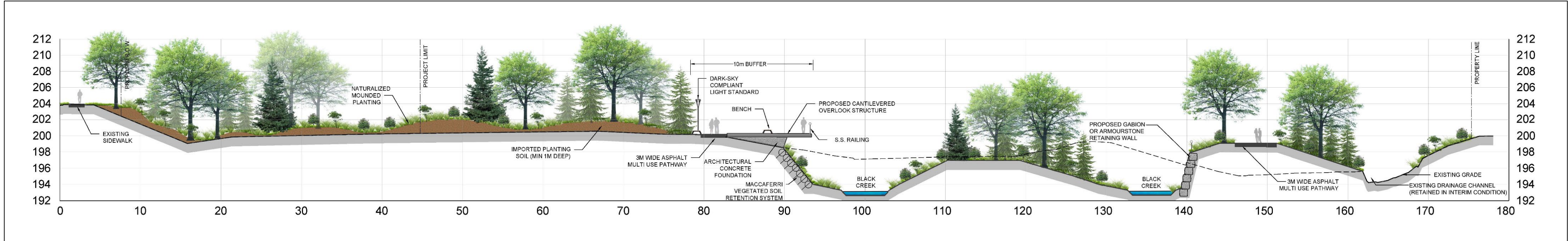
Section B-B'



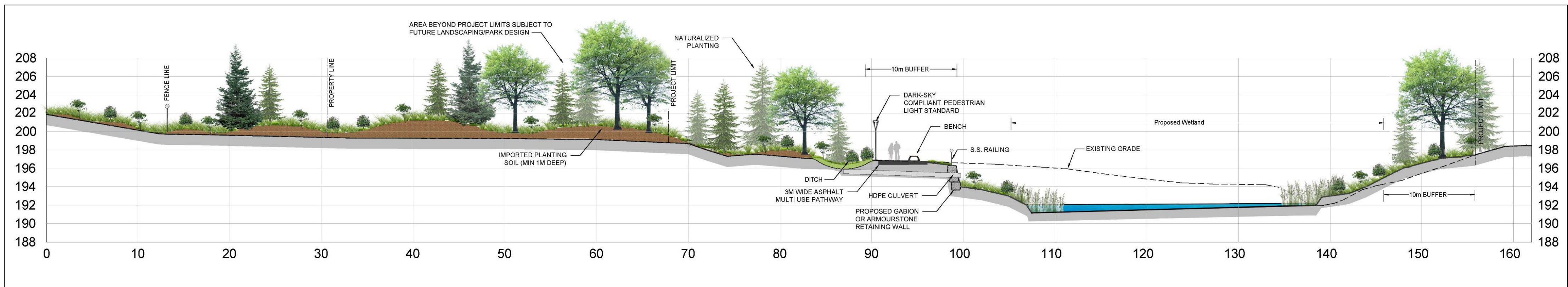
# Black Creek Renewal Interchange way to Hwy 7 (Lower Reach)



Section C-C'



Section D-D'



## Next Steps

- The six components will be constructed using a Design-Build approach
- The general timing with respect to the major components is provided in the table below
- The Design-Build contract is anticipated to award in Q4 2024

Major Project Component	Construction Start Date	Construction End Date
Black Creek Renewal	2025	2027
Edgeley Pond and Park	2025	2031
Highway 7 Culvert	2027	2029

**Flood prevention in the VMC**  
**Learn more**



[vaughan.ca/BlackCreek](https://vaughan.ca/BlackCreek)