

THE CITY OF VAUGHAN

BY-LAW

BY-LAW NUMBER 135-2023

A By-law to dedicate certain lands as part of the public highway.

The Council of The Corporation of the City of Vaughan ENACTS AS FOLLOWS:

THAT the lands which are situate in the City of Vaughan, in the Regional Municipality of York, being Part of Lot 8, Concession 9 designated as Part 1 on Reference Plan 65R-32182 being all of PIN# 03317-0725 (LT) and Block 53, Plan 65M-3627, being all of PIN# 03317-0194 (LT) registered in the Land Registry Office for the Land Titles Division of York Region (No.65); be and they are hereby dedicated as part of public highway known as “Rainbow Creek Drive”.

Voted in favour by City of Vaughan Council this 26th day of September, 2023.

Steven Del Duca, Mayor

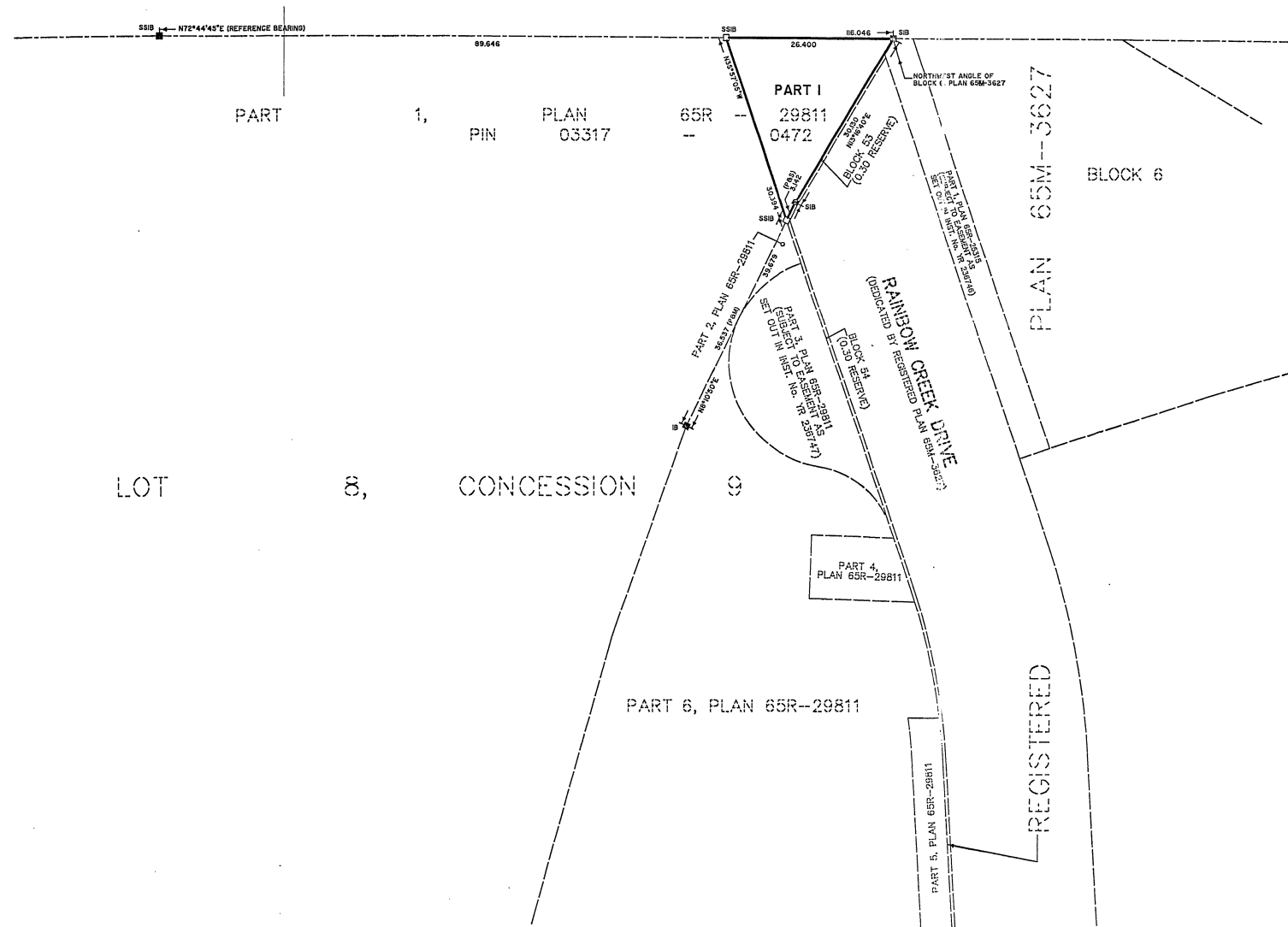
Todd Coles, City Clerk

Authorized by By-law 005-2018 being a
By-law to authorize delegation of approval
of certain administrative matters to Staff.
Adopted by Vaughan City Council on
January 30, 2018.
City Council voted in favour of this by-law on
September 26, 2023.
Approved by Mayoral Decision MDC 003-2023 dated September 26, 2023.
Effective Date of By-Law: September 26, 2023

METRIC: DISTANCES SHOWN
ON THIS PLAN ARE IN METRES
AND CAN BE CONVERTED TO
FEET BY DIVIDING BY 0.3048.

LOT 9, CONCESSION 9

PART 6, PLAN 65R-29429
PIN 03317-0371



I REQUIRE THIS PLAN TO BE DEPOSITED
UNDER THE LAND TITLES ACT.

PLAN 65R- 32182

RECEIVED AND DEPOSITED

DATE FEBRUARY 4, 2010.

DATE - February - 08, 2010

W. m. Jentor

W.M. FENTON
ONTARIO LAND SURVEYOR

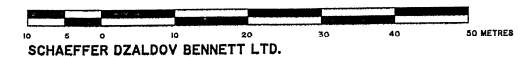
"KIM NGUYEN"

ASST. DEP. LAND REGISTRAR FOR THE LAND
TITLES DIVISION OF YORK REGION No. 65

SCHEDULE

PART	PART OF LOT	CONCESSION	PART OF PIN	AREA (m ²)
1	8	9	03317-0472	375.8

PLAN OF SURVEY OF
PART OF LOT 8,
CONCESSION 9
CITY OF VAUGHAN
REGIONAL MUNICIPALITY OF YORK
(GEOGRAPHIC TOWNSHIP OF VAUGHAN, COUNTY OF YORK)
SCALE 1 : 500



NOTES

□	DENOTES	PLANTED MONUMENT
■	"	FOUND MONUMENT
SIB	"	STANDARD IRON BAR
IB	"	IRON BAR
SSIB	"	SHORT STANDARD IRON BAR
922	"	SCHAEFFER DZALDOY BENNETT LTD.
P	"	PLAN 65R-29BII
M	"	MEASURED
S	"	SET

ALL FOUND MONUMENTS ARE NUMBERED 922.

BEARINGS ARE ASTRONOMIC AND ARE REFERRED TO THE NORTHERLY LIMIT OF PART I AS SHOWN ON PLAN 65R-298II, HAVING A BEARING OF $N72^{\circ}44'45"E$.

SURVEYOR'S CERTIFICATE

I CERTIFY THAT:

I. THIS SURVEY AND PLAN ARE CORRECT AND IN ACCORDANCE WITH THE SURVEYS ACT, THE SURVEYORS ACT, THE LAND TITLES ACT AND THE REGULATIONS MADE UNDER THEM.

2. THE SURVEY WAS COMPLETED ON THE 17th DAY OF NOVEMBER, 2009.

DATE NOVEMBER 24, 2009.

W. M. Jentz

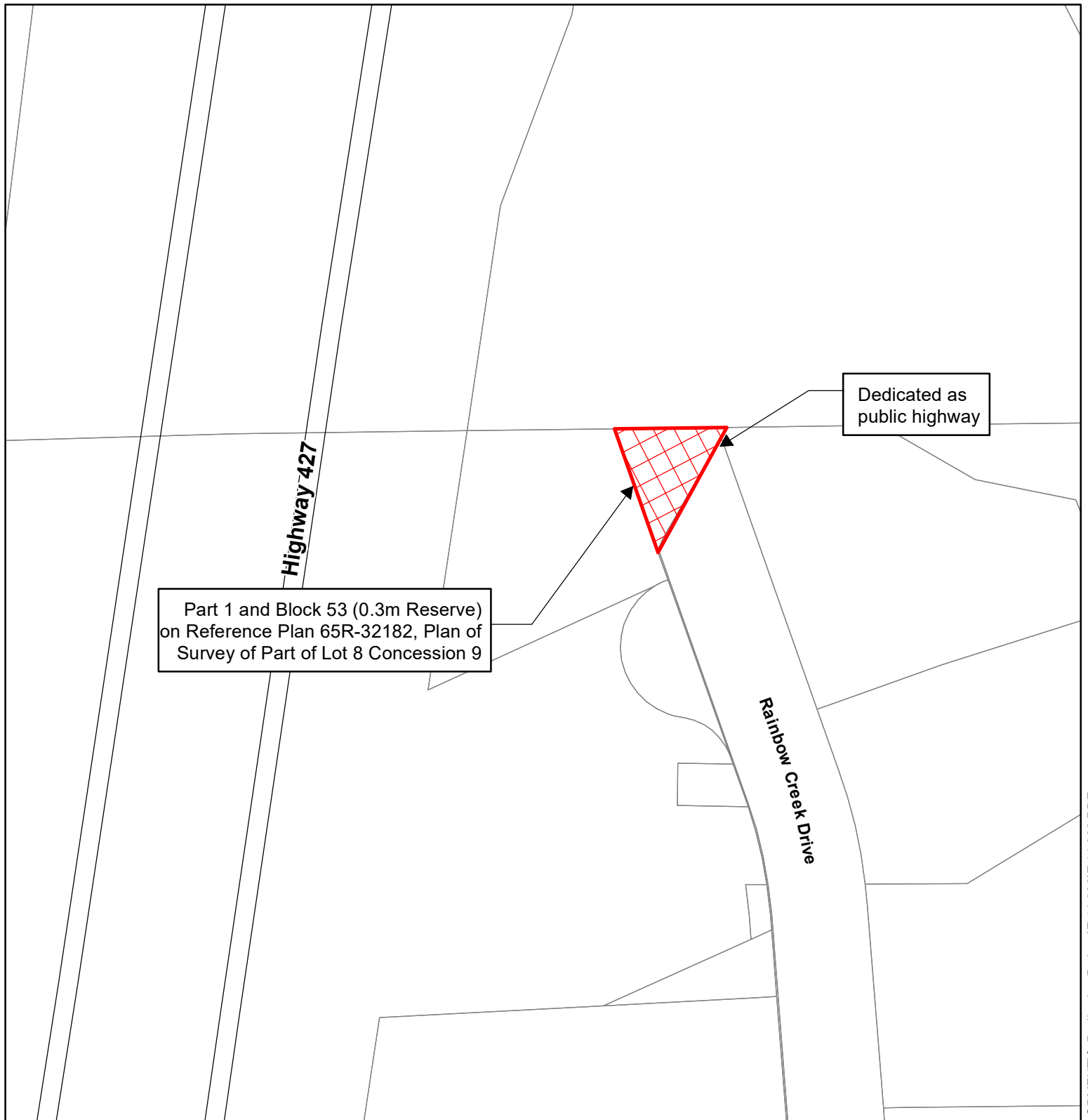
W.M. FENTON
Ontario Land Surveyor



SCHAEFFER DZALDOV BENNETT LTD.
ONTARIO LAND SURVEYORS

64 JARDIN DRIVE		CONCORD, ONTARIO L4K 3P3		TEL.(416)987-0101
DRAWN ACAD/LW	CHECKED WMF	SCALE 1:500	JOB NO. 99-215-34	

ATTACHMENT No.2



PART OF RAINBOW CREEK **65R-32182**

LOCATION: Part of Lot 8, Concession 9

Legend



SUBJECT LANDS



NOT TO SCALE