

Lawford Road Neighbourhood Traffic Study

City of Vaughan

Public Engagement Session #1 | June 15, 2023

7:00 p.m. – 8:30 p.m.

Project Welcome

- City of Vaughan
 - Margie Chung, Manager of Traffic Engineering
 - Sadia Khan, Project Lead
- CIMA+
 - Jeffrey Suggett, Senior Project Manager
 - Brandon Quigley, Public Facilitator

Land Acknowledgements

We respectfully acknowledge that the City of Vaughan is situated in the Territory and Treaty 13 lands of the Mississaugas of the Credit First Nation. We also recognize the traditional territory of the Huron-Wendat and the Haudenosaunee.

The City of Vaughan is currently home to many First Nations, Métis and Inuit people today. As representatives of the people of the City of Vaughan, we are grateful to have the opportunity to work and live in this territory.

Housekeeping

- Participants will be asked to participate during the presentation
- Opportunities to ask questions/make comments will be provided later on in the presentation
- This presentation will be recorded and a copy of the presentation will be made available on the project website following the meeting
- To ask a question please use the Q & A function where you can type your questions for the team to review
- You are also welcome to 'raise your hand' to indicate that you would like to ask a question of the team

Question

- What word or phrase best captures your vision for moving or travelling through this neighbourhood?

Presentation Overview

- **Project Overview**
 - Purpose
 - Study Area
 - Study Scope and Timeline
 - Study Objectives
 - Future Considerations
 - Online Survey Initial Findings
- **Vehicle Speeds**
- **Driver Behaviour**
- **Walking and Cycling**
- **Potential Solutions**
- **Roundtable Discussion**
- **Closing Remarks**

Project Purpose

- This project will review traffic operations and identify any additional road safety opportunities for pedestrians, cyclists, and transit and vehicular road users
- The project will enable City staff to make recommendations on short- and long-term implementation plans to address any specific issues identified in these areas, which will be presented to Council for approval.



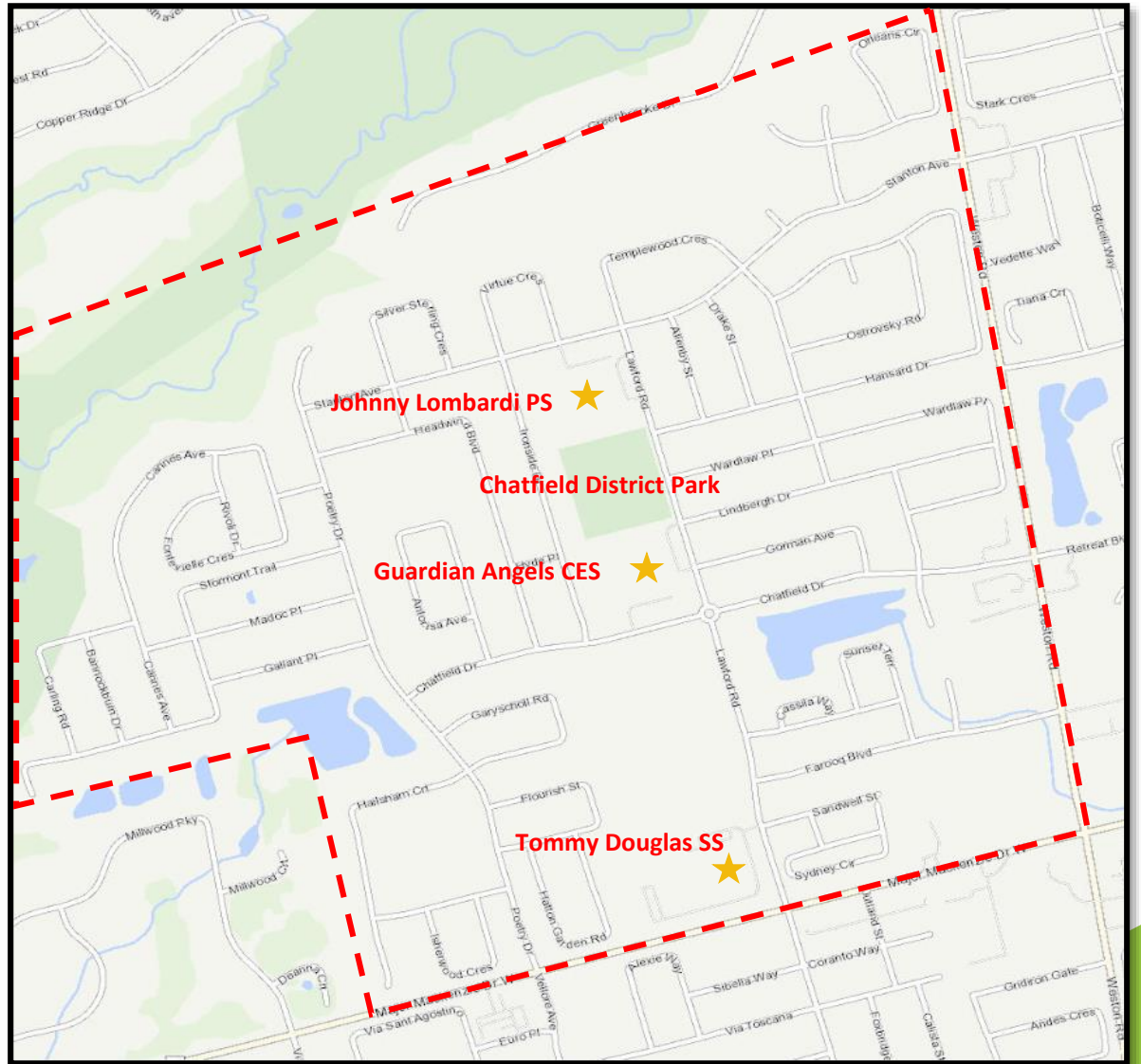
Study Area

• Lawford Road Neighbourhood

- Community is a relatively new subdivision located in the southern half of Block 40 of Ward 3
- Block 40 is north of Major Mackenzie Drive, west of Weston Road, south of Teston Road and east of Pine Valley Drive

• Major Traffic Generators

- Guardian Angels Catholic Elementary School
- Johnny Lombardi Elementary School
- Tommy Douglas Secondary School
- Chatfield District Park



Project Context (continued)

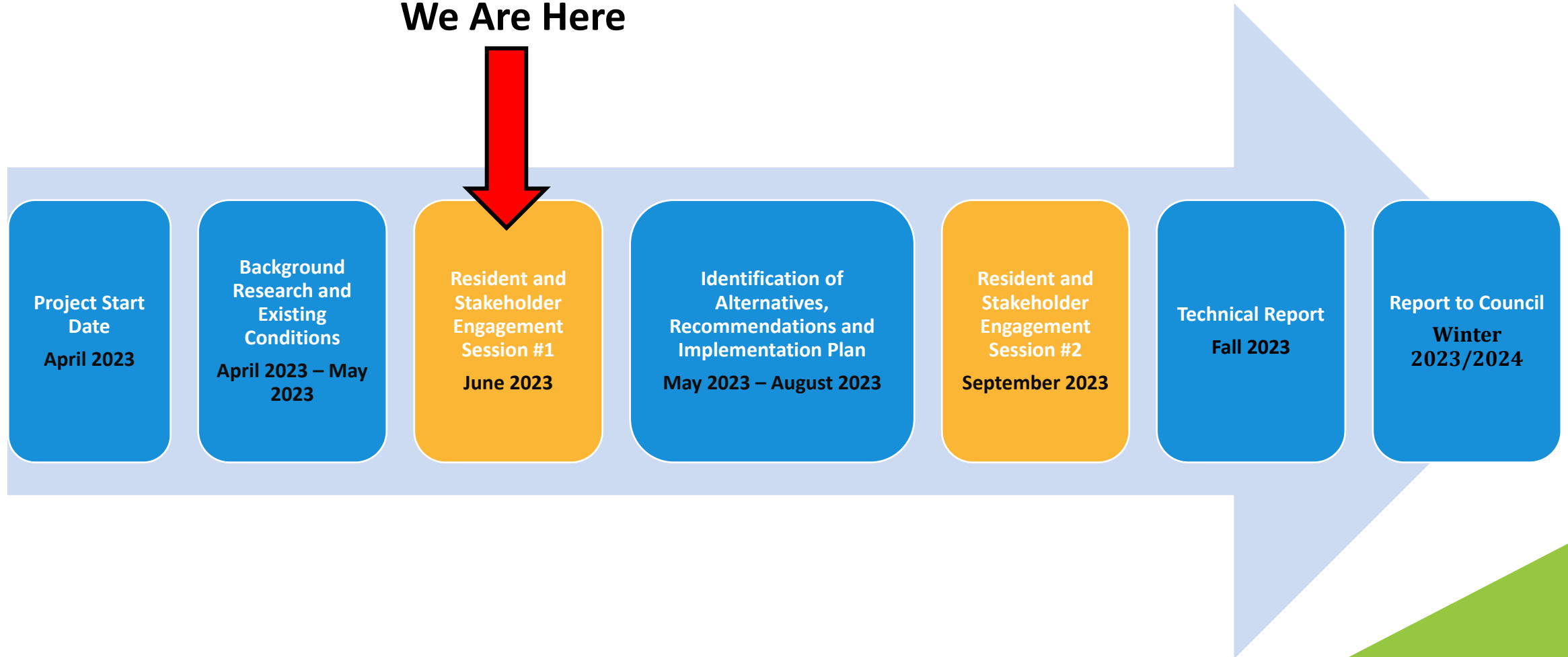
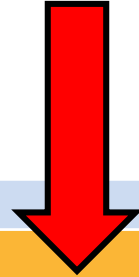
Future development

- Future residential development planned in southeast corner of neighbourhood
- Farooq Boulevard to connect directly to Weston Road



Project Timeline

We Are Here



Work Completed to Date

- **Background Research and Existing Conditions (Completed)**
 - Traffic Studies
 - Turning Movement Counts, Automated Traffic Recorder (ATR) Counts
 - Historical Collision Analysis
 - Review of:
 - Active Transportation
 - Intersection Operations
 - Future Development

Online Survey Highlights

- 238 responses as of June 8th, 2023
- 63% of respondents cited 'speeding' as a concern
- 45% of respondents cited 'unsafe behaviours associated with school drop-off and pick-up' as a concern
- 66% of respondents described their future vision for the neighbourhood as 'safe for pedestrians, cyclists, transit users and motorists'
- 45% of respondents ranked 'enhanced enforcement of traffic rules' as their top priority

Survey Link

<https://www.vaughan.ca/about-city-vaughan/projects-and-initiatives/transportation-projects/lawford-area-traffic-study>

Topics for Discussion

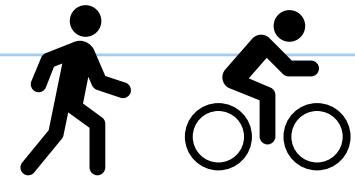
**Vehicle
Speeds**



**Driver
Behaviour**



**Walking
and Cycling**



Vehicle Speeds



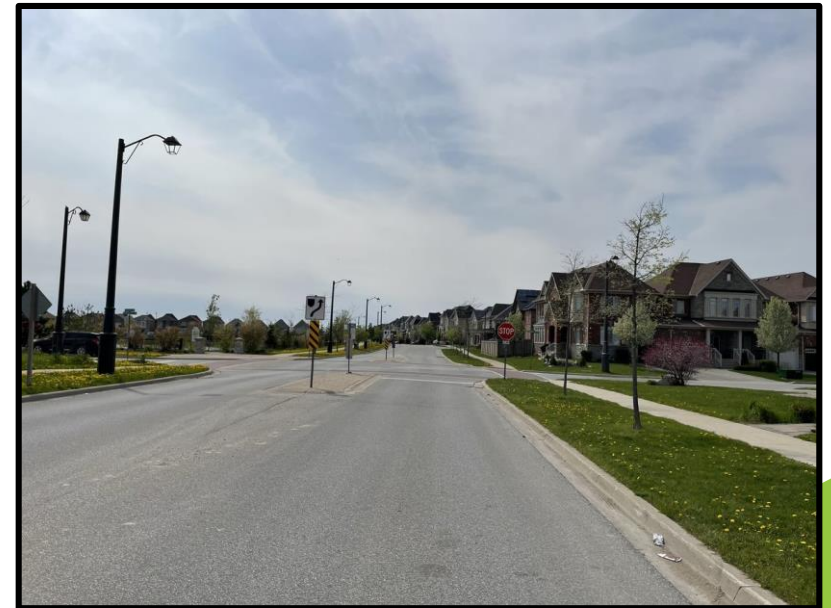
What we looked at

- **Posted Speeds**
- **Operating Speeds**
 - **Data Collected by Ontario Traffic Inc. (OTI)**
 - Eight Automated Traffic Recorder (ATR) counts stations in the neighbourhood
 - **85th Percentile Speeds** - Speed at or below 85 percent of drivers will operate
- **Traffic Calming Measures**
 - Existing traffic measures implemented in neighbourhood to control speeds



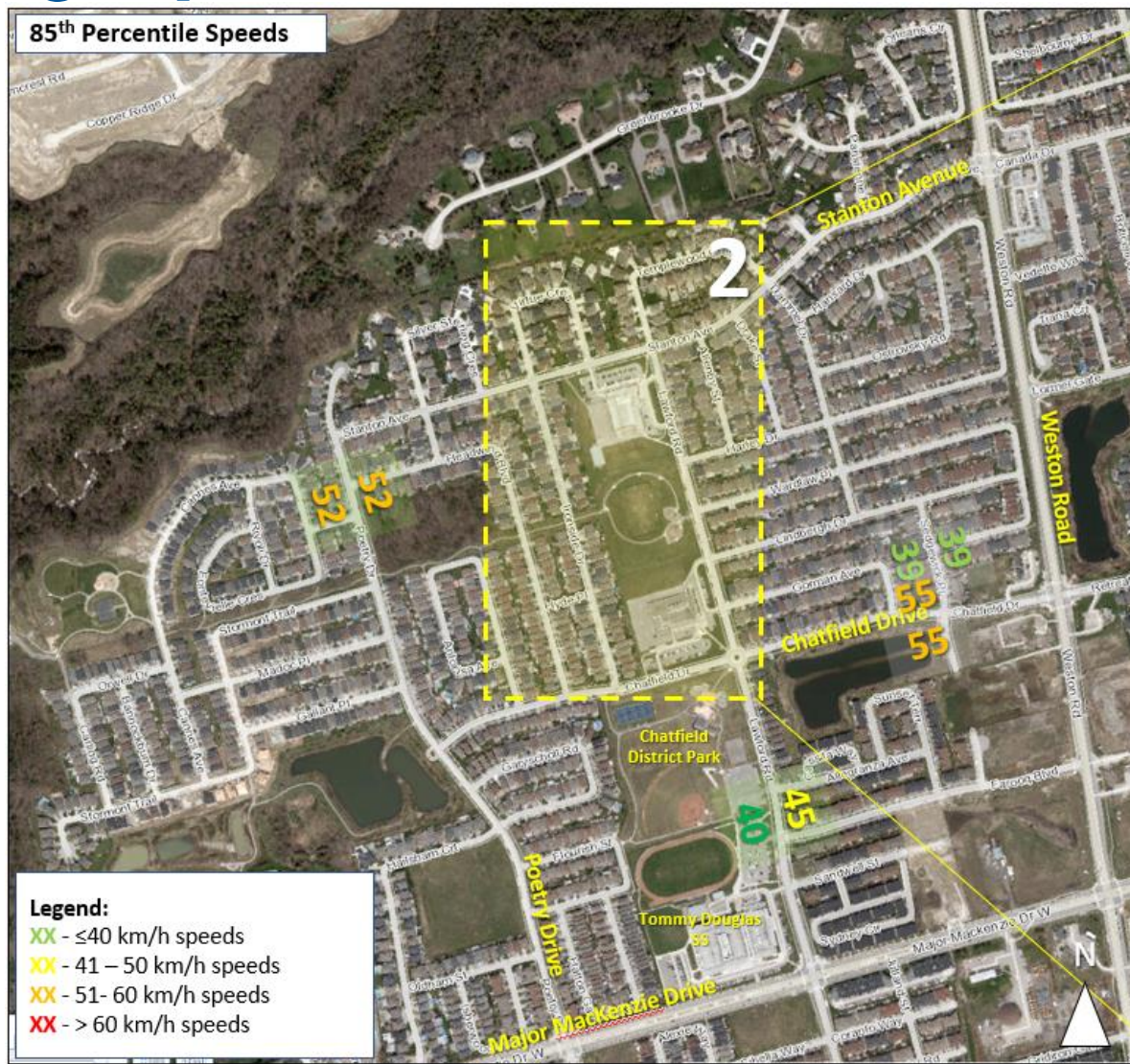
Speed and Traffic Controls

- **Posted Speed Limit**
 - 40 km/h throughout study area
- **Traffic Controls**
 - Roundabout at Chatfield Drive and Lawford Road
 - All-Way Stop Controlled Intersections:
 - Chatfield Drive & Poetry Drive
 - Stanton Avenue & Lawford Road
 - Lawford Road & Harley Drive
 - Lawford Road & Farooq Boulevard
 - Chatfield Drive & Sedgewick Place/Dundonnell Place
 - Stanton Avenue & Templewood Crescent/Trammel Drive



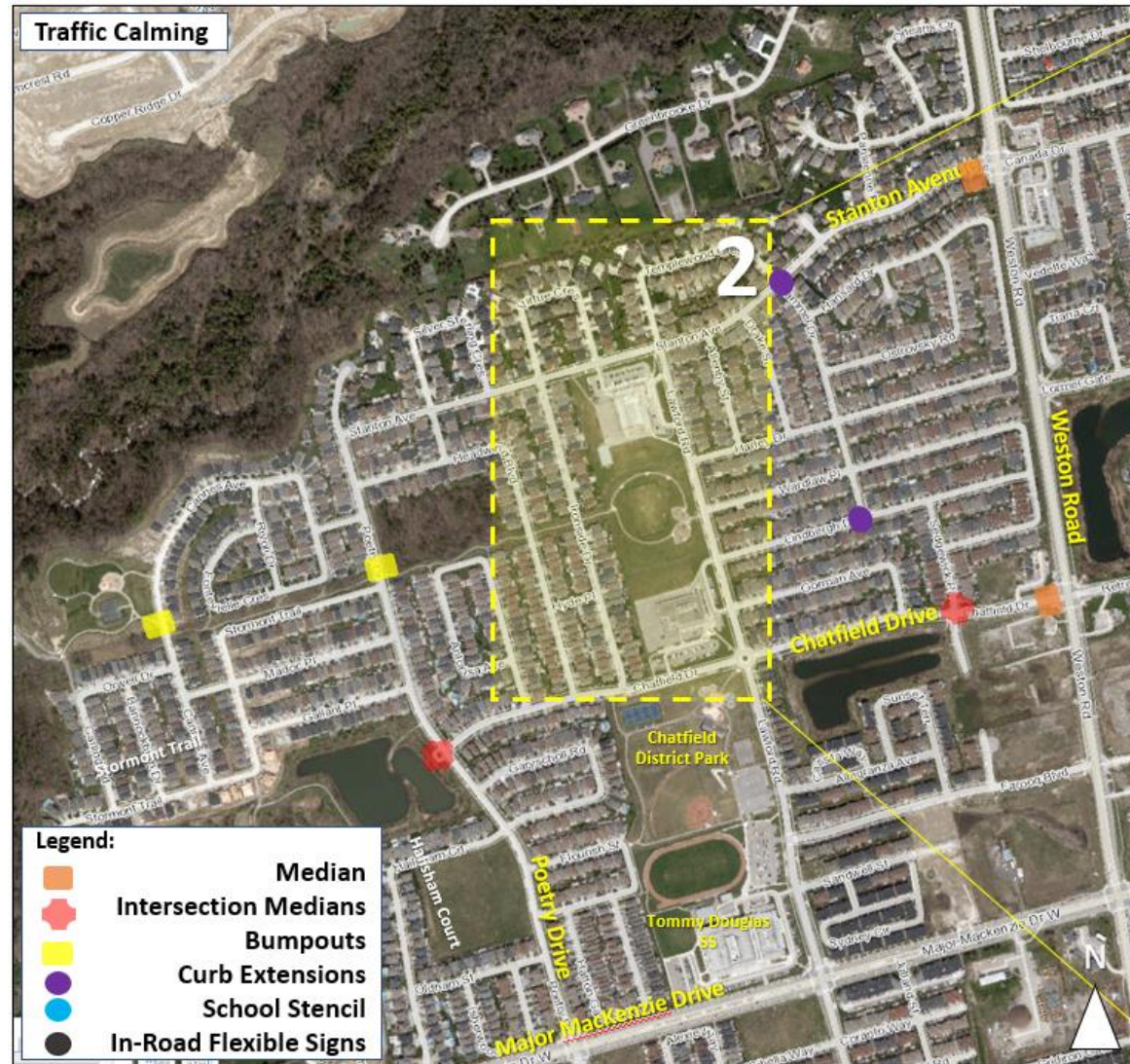
Operating Speeds

- Operating speeds range between mid-30's and mid-50's
- Potential need for additional traffic calming in neighbourhood



Traffic Calming

- A number of traffic calming measures were implemented when the neighbourhood was originally developed
- City has since added in other measures (school stencils and in-road flexible signs)
- Region has implemented no stopping and no parking restrictions on Major MacKenzie Drive at Tommy Douglas High School



Driver Behaviour



What we looked at

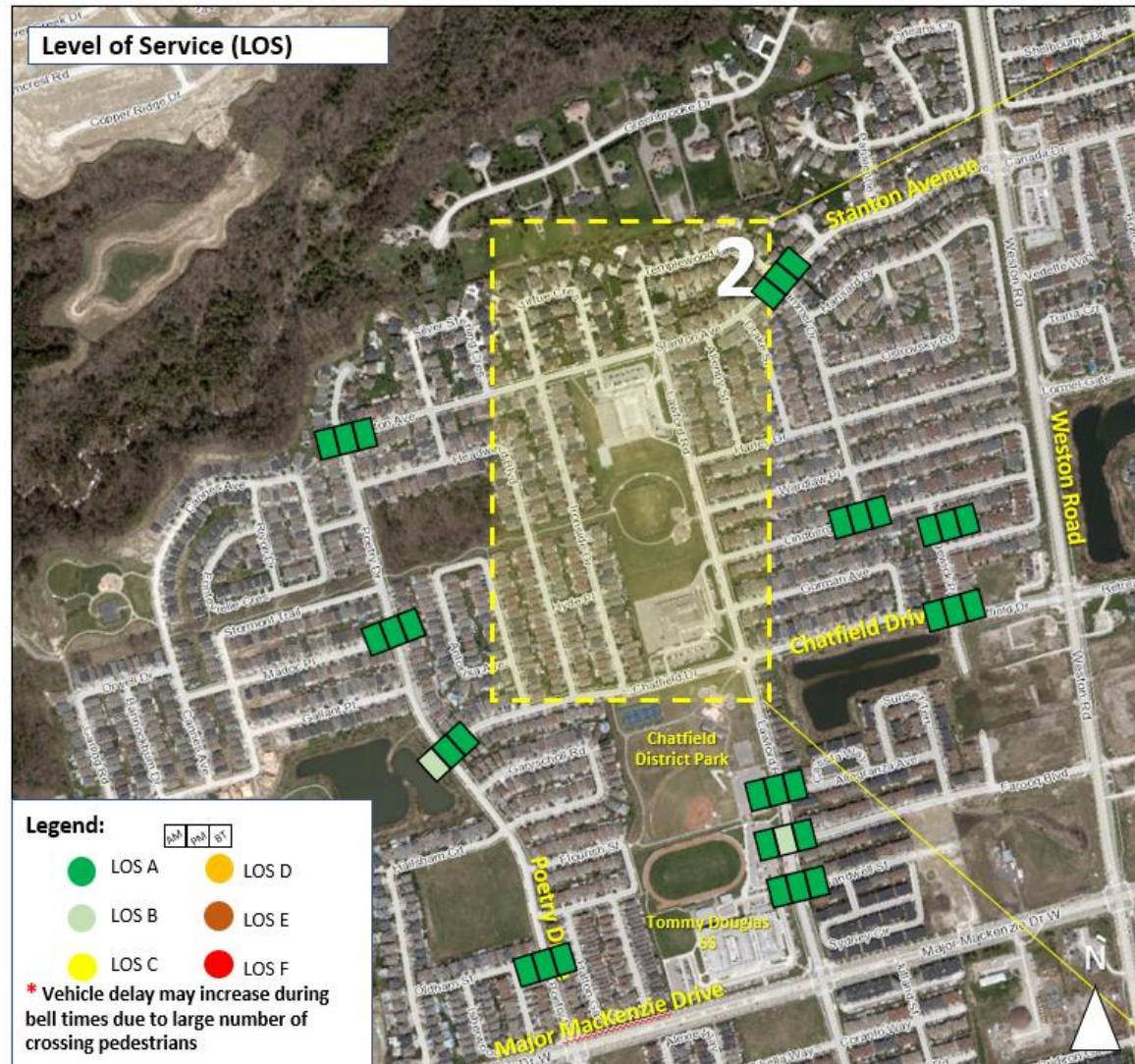
- **Traffic movements**
 - **Data Collected by Ontario Traffic Inc. (OTI)**
 - Twenty-two intersection turning movement counts within the study area
 - Collected data allows for understanding traffic movements during different time periods
 - Collected during a weekday AM peak period, school bell time (2 – 3 pm), and PM peak period
- **Delay**
 - **Level of Service (LOS)** – Qualitative measure of traffic flow
- **Collision History**



21 Intersection Operations

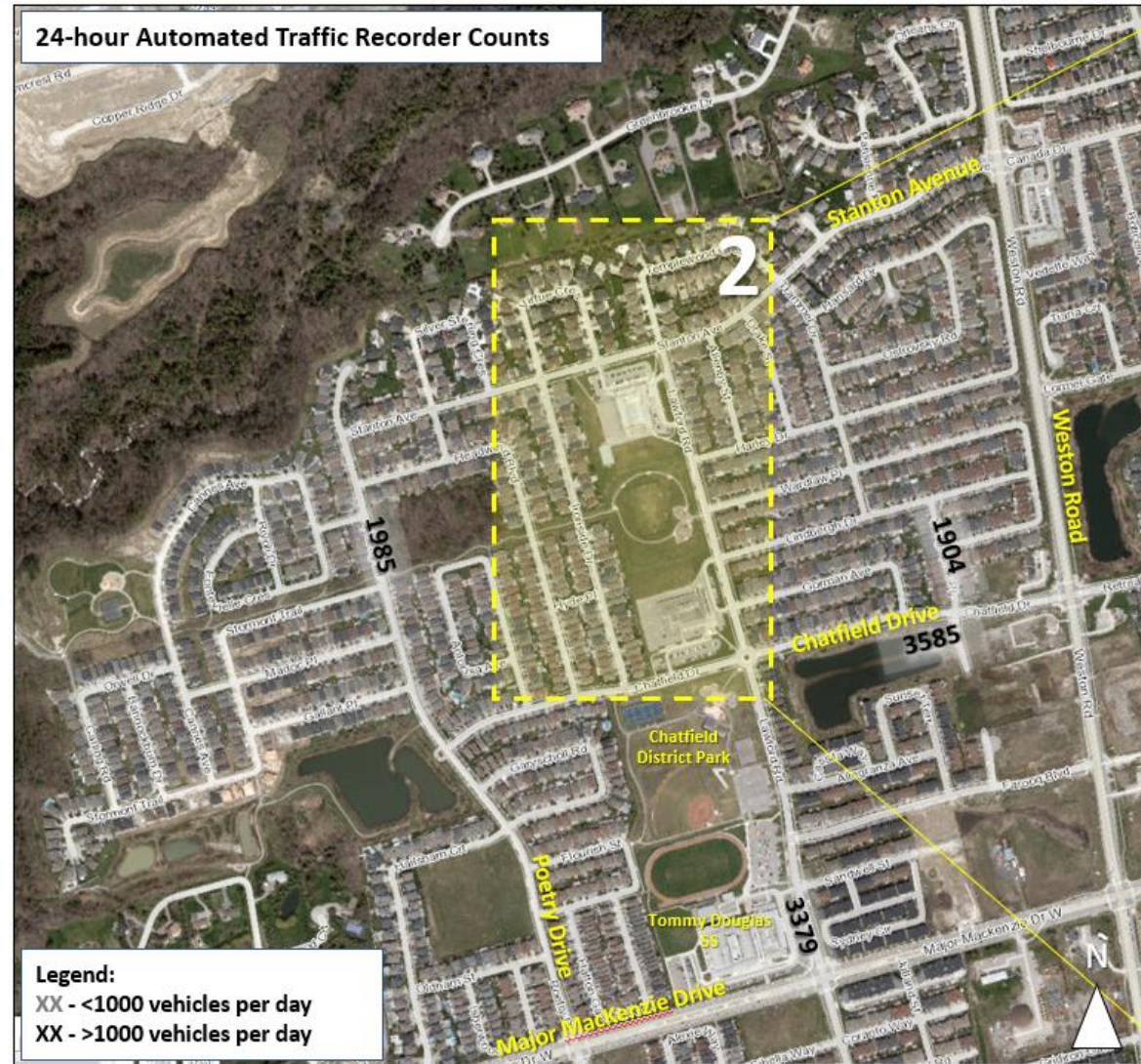
- Overall, intersections are operating with minimal delay
- Some short-term congestion noted close to bell times at the three schools

LOS	Unsignalized Delay (seconds)	Signalized Delay (seconds)
A	0 – 10.0	<10.0
B	>10.1 – 15.0	10.1 – 20.0
C	>15.1 – 25.0	20.1 – 35.0
D	>25.1 – 35.0	35.1 – 55.0
E	>35.1 – 50.0	55.1 – 80.0
F	> 50.0	>80.0

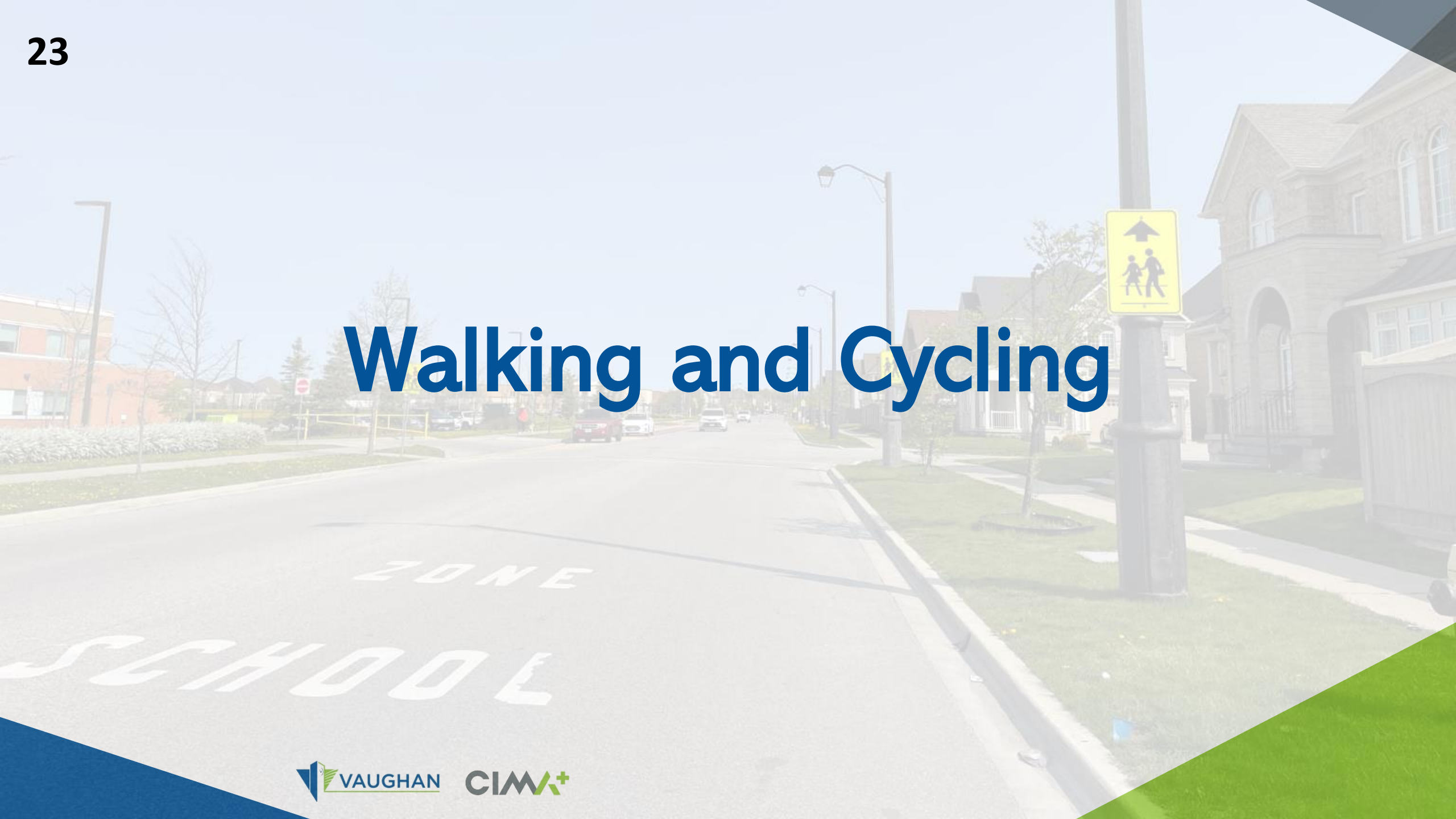


Traffic Flow

- Heaviest traffic on Chatfield Drive east of Lawford Road and Lawford Road north of Major Mackenzie Drive
- Traffic will decrease in area once new school is opened on Barons Road (200 students will be attending)



Walking and Cycling



What we looked at

- **Traffic movements**

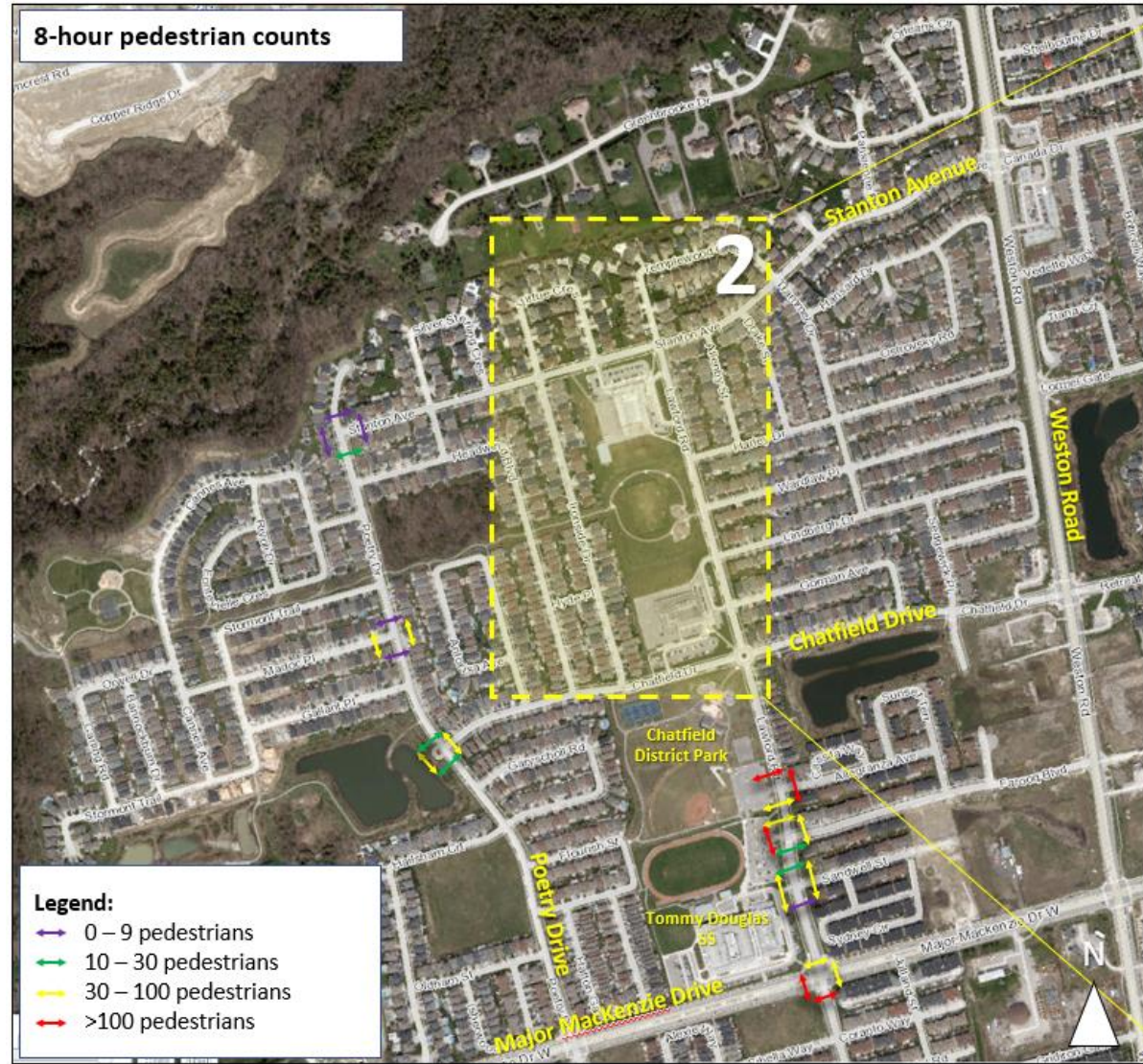
- **Data Collected by Ontario Traffic Inc. (OTI)**

- Twenty-two counts of pedestrian and cyclist movements within neighbourhood
 - Collected data allows for understanding pedestrian and cyclist movements during different time periods
 - Collected during a weekday AM peak period, PM peak period, and school peak hours

- **Pedestrian and cyclist facilities**

Pedestrian Counts

- Heavy pedestrian movements across Lawford Road in the vicinity of the three schools (>100 pedestrians in 8 hour period)



Planned Cycling Facilities

- City has identified the need for dedicated cycling routes on Poetry Drive and Stanton Avenue
- Opportunity to provide additional cycling facilities on Chatfield Drive and Lawford Road






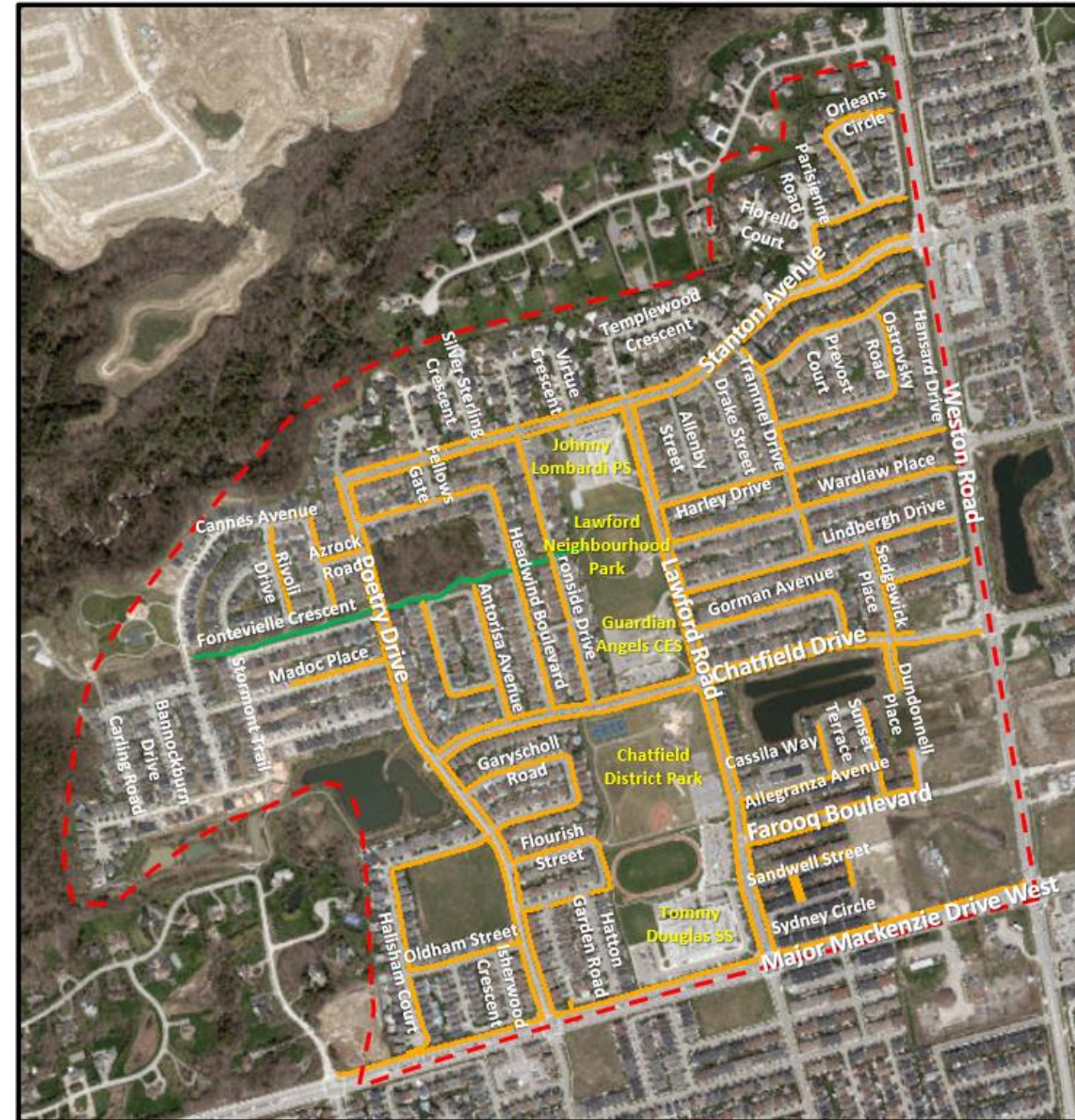
Walking

- All collector roads have sidewalks on both sides of the road (i.e. Poetry Drive, Lawford Road, Stanton Avenue and Chatfield Drive)
- Dedicated trail connecting Lawford Neighbourhood Park to Cannes Avenue



Legend

-  Sidewalk
-  Trail
-  Study Area



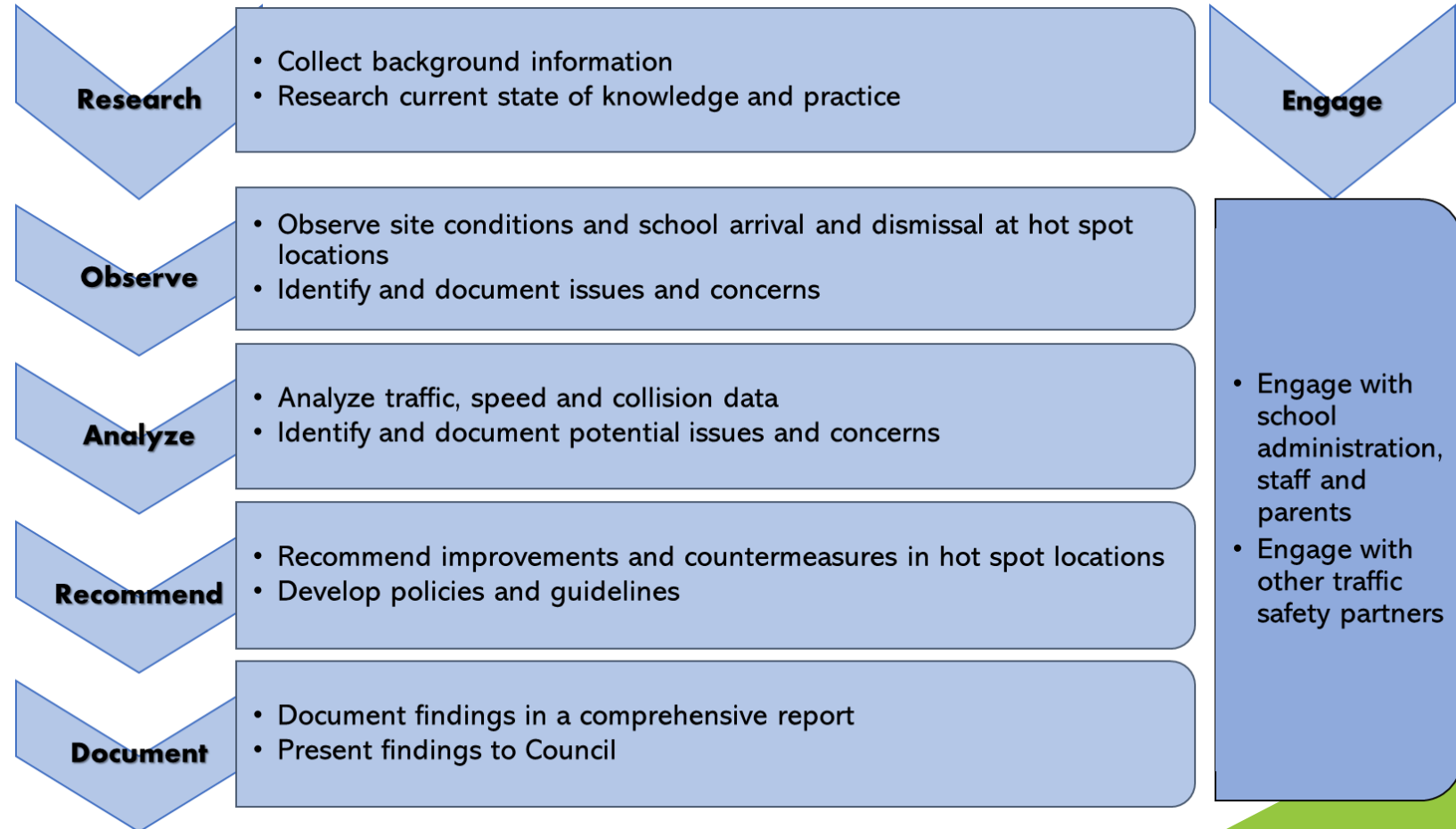
Other Projects



Safer School Zone Study

- In parallel with this project, CIMA is currently working on the Safer School Zone study
- All three schools within the neighbourhood have been selected for a detailed review
- Separate consultation is underway with school officials and parent council representatives


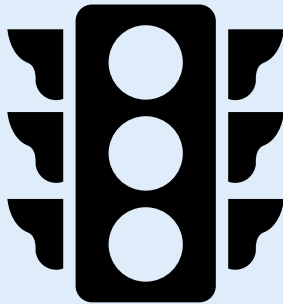



Key Tasks



Potential Solutions

Traffic Control Measures





Traffic Control Measures

Traffic Control Measures	Stop Control	Traffic Signals	Pedestrian Crossovers	One-Way Roads	Turn Restrictions
Examples					

Potential Solutions

Traffic Calming Measures

Traffic Calming Measures

Traffic Calming Measures	Examples	Traffic Calming Measures	Examples
<p>Chicanes</p>		<p>In-Road Flexible Signs</p>	
<p>Curb extensions</p>		<p>Transverse Markings</p>	

Potential Solutions

Educational Measures, Community Measures,
Enforcement

Educational and Community Measures

Traffic Calming Measures	Examples	Traffic Calming Measures	Examples
Speed Display Boards		Enforcement	
Educational Campaigns		Warning Signs	

Roundtable Discussion

Now is the time to ask questions or share your insights on the neighbourhood. Please either type your comment or question in the Q&A box or raise your hand.

Consider the following questions:

- What do you like about the neighbourhood?
- What are some of the issues you experience related to transportation?
- Where are these issues occurring?
- Are there solutions that you think should be considered?

To provide more detailed comments regarding this project please also complete the survey about your experiences in this neighbourhood at <https://www.vaughan.ca/about-city-vaughan/projects-and-initiatives/transportation-projects/lawford-area-traffic-study>

Next Steps

- Consultant team will continue analysis and review input from members of the public

How you can continue to be involved:

- Next public engagement session will be scheduled in September 2023
- Submit a response to the survey on the project website before June 26th

<https://www.vaughan.ca/about-city-vaughan/projects-and-initiatives/transportation-projects/lawford-area-traffic-study>

- Review this presentation and other project materials and share with neighbours and friends
- Email the project leads at lawfordstudy@cima.ca

Thank you!

ZONE
SCHOOL