

# SCHEDULES

|                     |  |
|---------------------|--|
| <b>Schedule 1</b>   | Urban Structure  |
| <b>Schedule 1A</b>  | Urban Area   |
| <b>Schedule 1B</b>  | Areas Subject to Policy 9.1.2.3 - Vaughan's Established Large-Lot Neighbourhoods |
| <b>Schedule 2</b>   | Natural Heritage Network   |
| <b>Schedule 3</b>   | Environmentally Sensitive Areas and Areas of Natural and Scientific Interest     |
| <b>Schedule 4</b>   | Oak Ridges Moraine Conservation Plan and Greenbelt Plan Areas                    |
| <b>Schedule 5</b>   | Mineral Aggregate Resources  |
| <b>Schedule 6</b>   | Aquifer Vulnerability  |
| <b>Schedule 7</b>   | Landform Conservation  |
| <b>Schedule 8</b>   | Special Policy Areas   |
| <b>Schedule 9</b>   | Future Transportation Network  |
| <b>Schedule 10</b>  | Major Transit Network  |
| <b>Schedule 11</b>  | Wellhead Protection Areas  |
| <b>Schedule 12</b>  | TransCanada Pipe Facilities  |
| <b>Schedule 13</b>  | Land Use Designations  |
| <b>Schedule 14A</b> | Areas Subject to Secondary Plans   |
| <b>Schedule 14B</b> | Areas Subject to Area Specific Plans   |
| <b>Schedule 14C</b> | Areas Subject to Site Specific Plans   |



The City of Vaughan makes every effort to ensure that Schedules are free of errors but does not assert that the schedules are spatially, tabularly or temporally accurate. The Schedules are provided by the City of Vaughan without warranties of any kind, either expressed or implied.

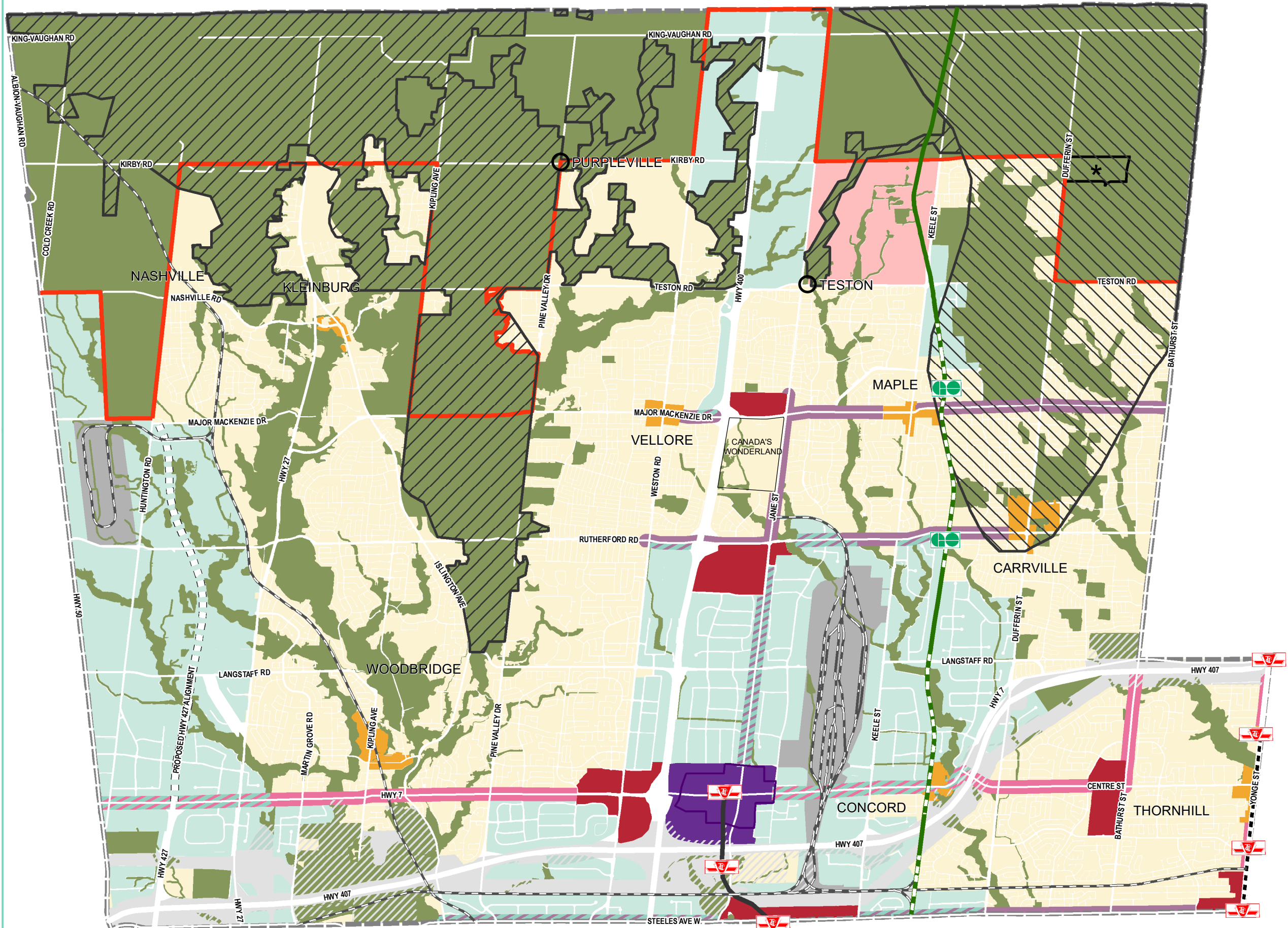
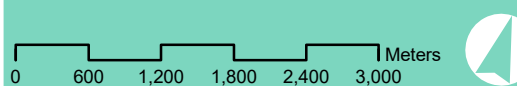
# SCHEDULE 1



## Urban Structure

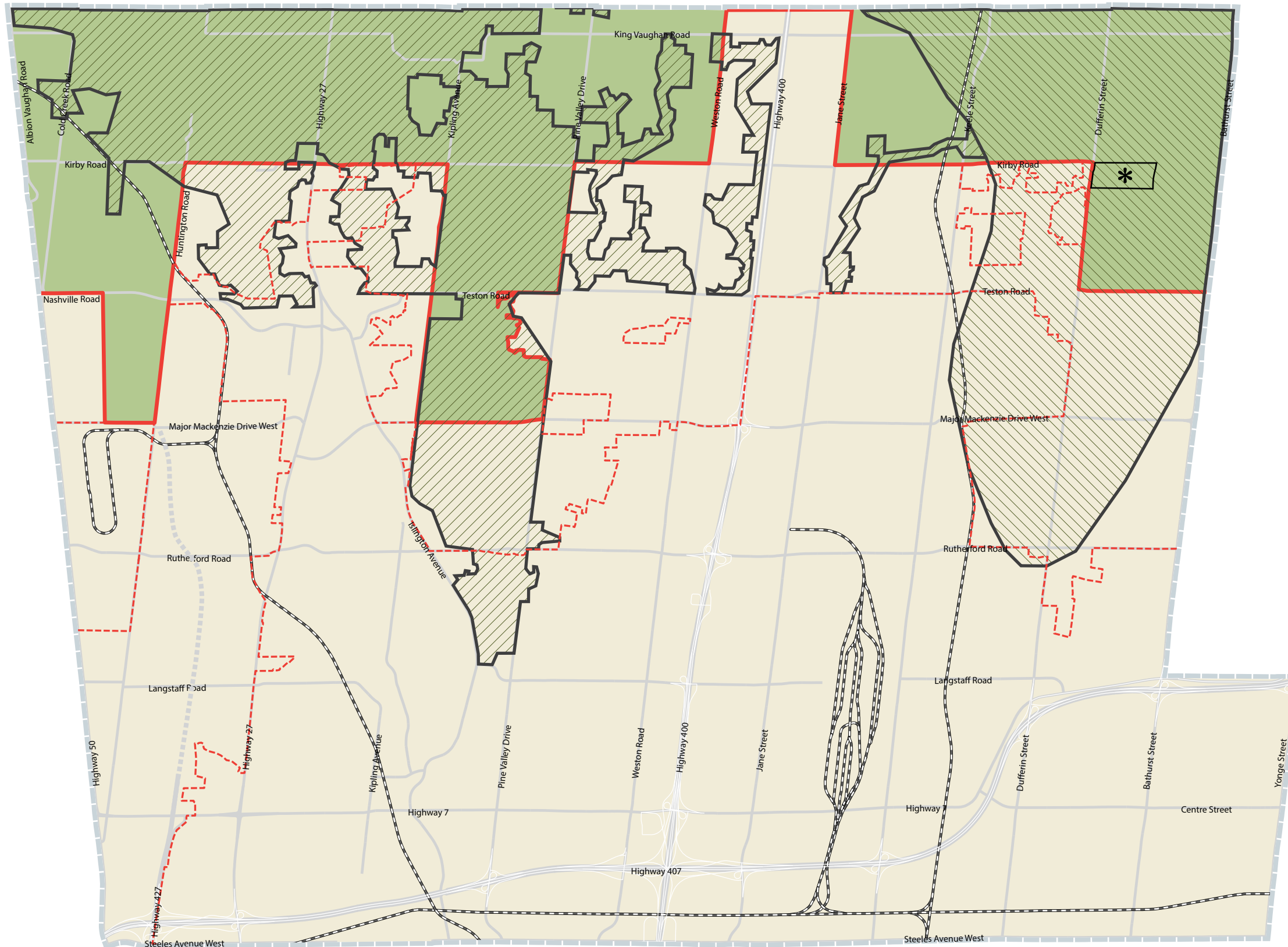
- Urban Boundary
- Urban Growth Centre Boundary
- Stable Areas**
  - Natural Areas and Countryside
  - Community Areas
  - New Community Areas
  - Employment Areas
  - Rail Facilities
- Intensification Areas**
  - Vaughan Metropolitan Centre (Regional Centre)
  - Primary Centres
  - Local Centres
  - Regional Intensification Corridors
  - Regional Intensification Corridors within Employment Areas
  - Primary Intensification Corridors
  - Primary Intensification Corridors within Employment Areas
  - Parkway Belt West Lands
  - Railway
  - Subway Extension
  - Proposed Subway Extension
  - GO Transit Network
  - Greenbelt Plan Area<sup>1</sup>
  - Oak Ridges Moraine Conservation Plan Area<sup>1</sup>
  - Hamlet
  - See Minister's Decision on ORMCP Designation
  - Municipal Boundary

<sup>1</sup> See Schedule 4 for limits and land use information of the Greenbelt Plan and Oak Ridges Moraine Conservation Plan Area.



The City of Vaughan makes every effort to ensure that Schedules are free of errors but does not assert that the schedules are spatially, tabularly or temporally accurate. The Schedules are provided by the City of Vaughan without warranties of any kind, either expressed or implied.

SCHEDULE 1A  
Urban Area



- Urban Boundary
- Growth Plan 2006 Built Boundary
- Urban Area
- Non-Urban Area
- Greenbelt Plan Area<sup>1</sup>
- Oak Ridges Moraine Conservation Plan Area<sup>1</sup>
- See Minister's Decision on ORMCP Designation
- Municipal Boundary

<sup>1</sup> See Schedule 4 for limits and land use information of the Greenbelt Plan Area and Oak Ridges Moraine Conservation Plan Area

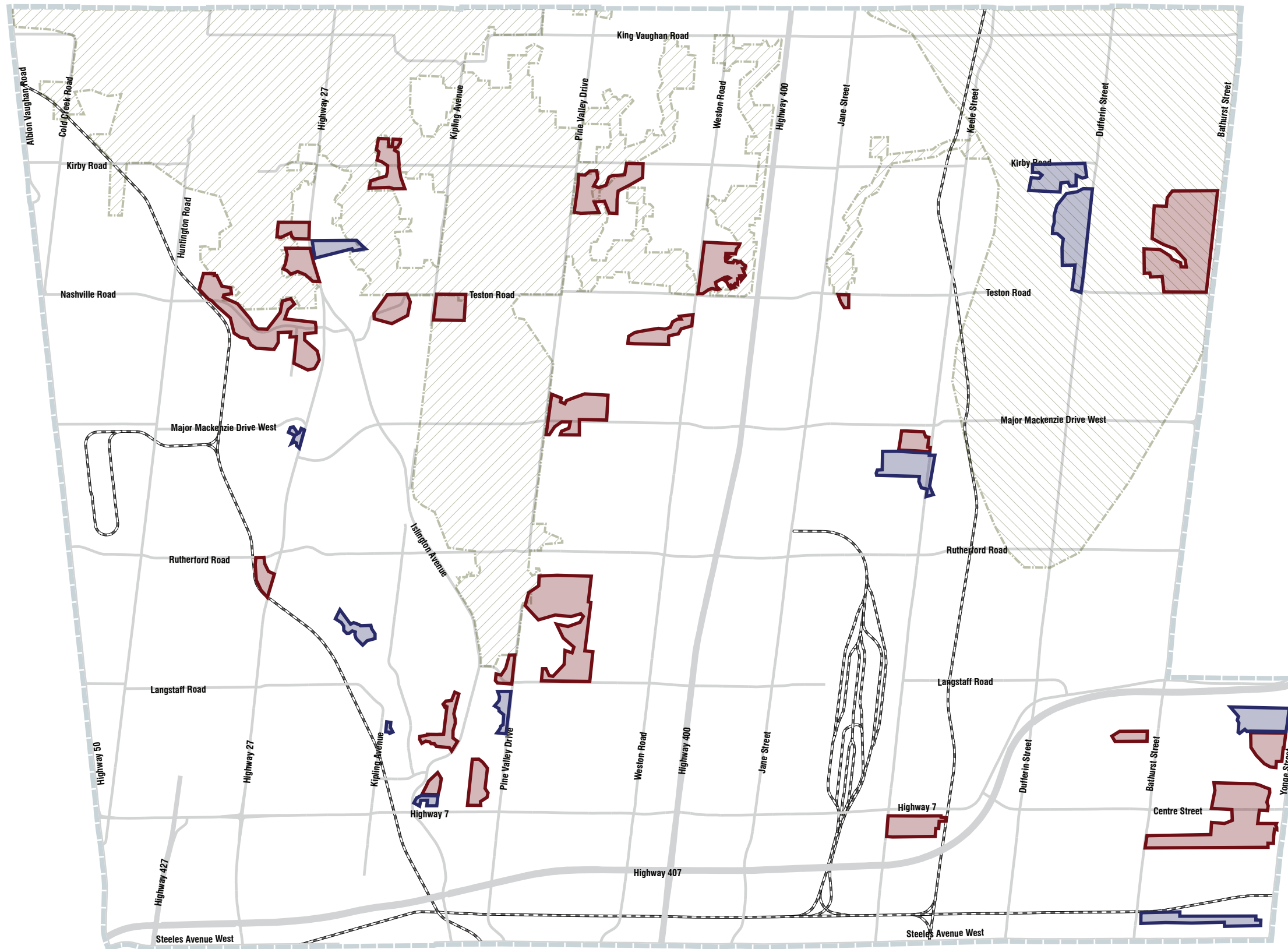


The City of Vaughan makes every effort to ensure that Schedules are free of errors but does not assert that the schedules are spatially, tabularly or temporally accurate. The Schedules are provided by the City of Vaughan without warranties of any kind, either expressed or implied.

**SCHEDULE 1B**

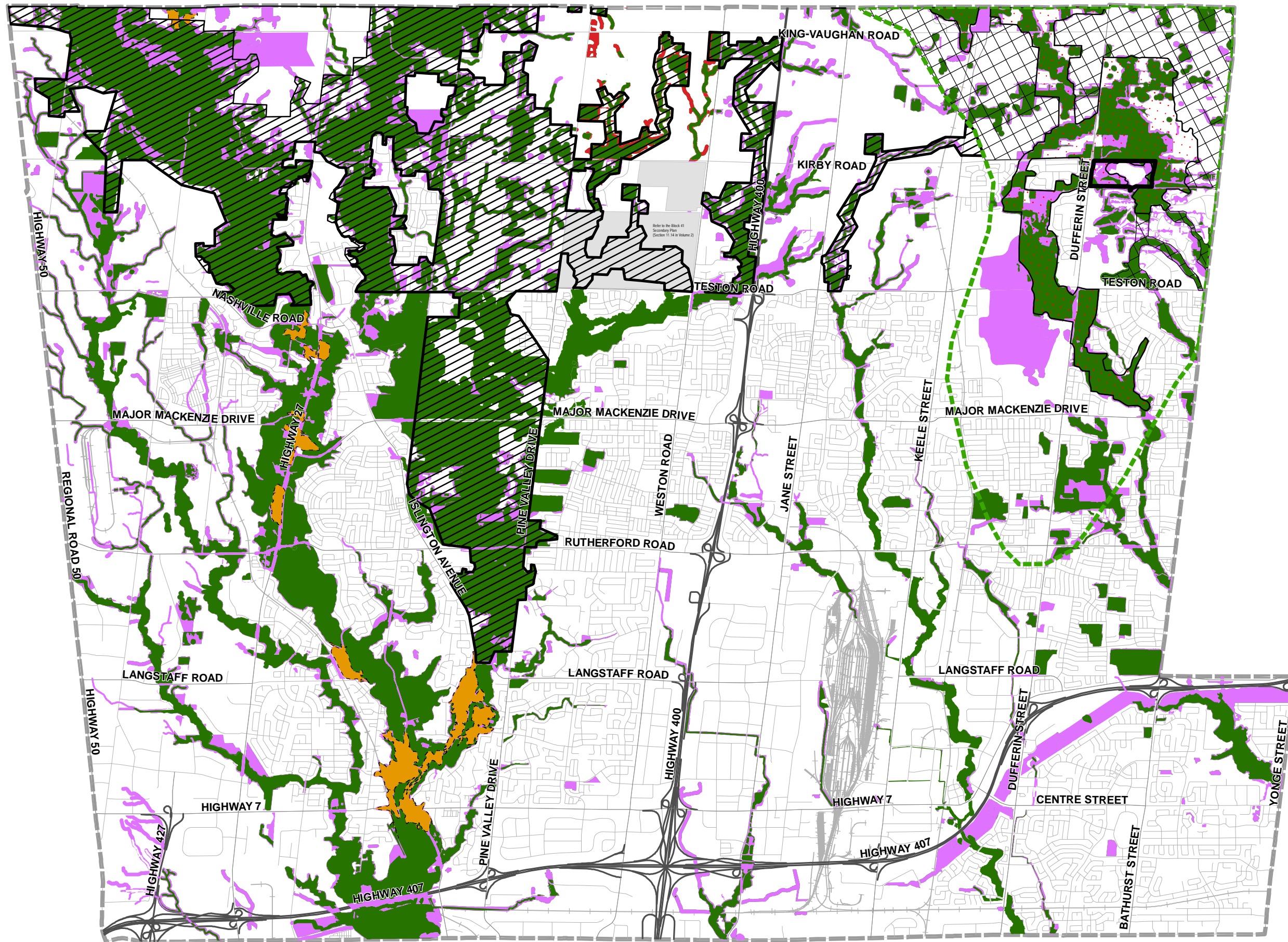
**Areas Subject to Policy 9.1.2.3 - Vaughan's Established Large-Lot Neighbourhoods**

- 30m+ (100f+)
- 21m to 29m (70ft to 95ft)



The City of Vaughan makes every effort to ensure that Schedules are free of errors but does not assert that the schedules are spatially, tabularly or temporally accurate. The Schedules are provided by the City of Vaughan without warranties of any kind, either expressed or implied.

## Natural Heritage Network



- Core Features
- Built-Up Valley Lands<sup>1</sup>
- Unapproved<sup>3</sup>
- To be Determined Through Future Development<sup>4</sup>

- Greenbelt**
- Greenbelt Plan Area Boundary<sup>2</sup>
  - Greenbelt Natural Heritage System

- ORM Conservation Plan**
- Oak Ridges Moraine (ORM) Conservation Plan Boundary<sup>2</sup>
  - Natural Core Area
  - Natural Linkage Area
  - Area Subject to ORMCA Minister's Zoning Order
  - City of Vaughan Boundary
  - Lands Subject to Secondary Plans

The policy text in Chapter 3 prevails over the mapping shown on Schedule 2 in determining the Natural Heritage Network. Core features shall be precisely delineated on a site-by-site basis through the approval of the Planning Act Applications supported by appropriate technical studies. Refinements to the NHN may occur through Secondary Plan or development approval processes and shall be reflected on this schedule without the need for an Official Plan Amendment. Where the schedule does not accurately reflect an existing development approval, the schedule may be updated without the need for an Official Plan Amendment.

For watercourses and waterbodies outside of well-defined valleys, the vegetation protection zone is to be established according to the policies in Chapter 3.

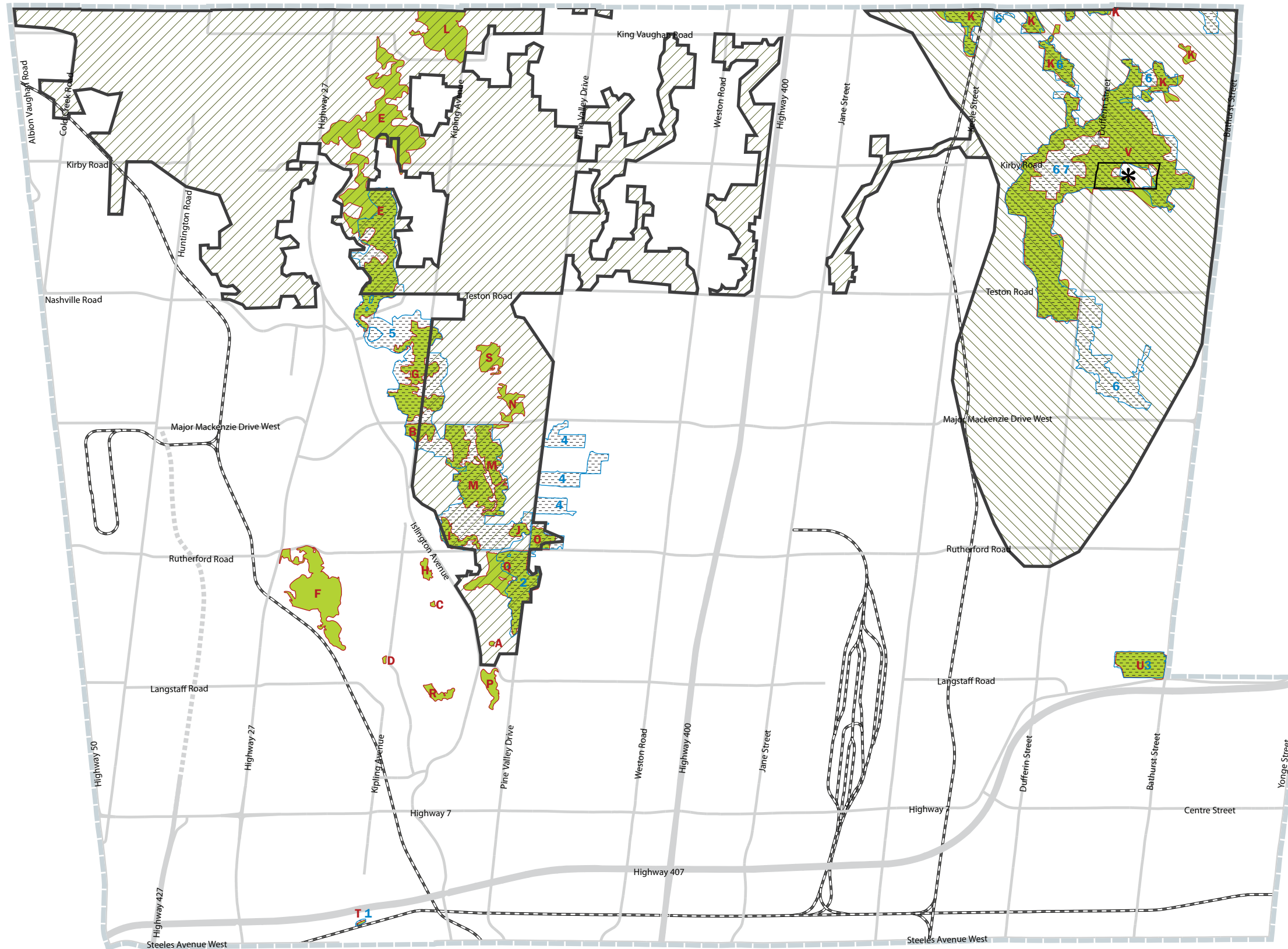
Enhancement areas are identified conceptually on Schedule 2 and the text shall be consulted to determine the final location and design.

- 1) Data provided by Urban Strategies.
- 2) See Schedule 4 for limits and the land use information of the Greenbelt Plan Area and the Oak Ridges Moraine Conservation Plan Area.
- 3) Sites under consideration for Core Feature additions, Core Feature deletions, or classification as an Enhancement Area.
- 4) Sites under consideration for Core Feature additions, or classification as an Enhancement Area to be determined through appropriate technical studies during the secondary plan and/or the development approval process.



The City of Vaughan makes every effort to ensure that Schedules are free of errors but does not assert that the schedules are spatially, tabularly or temporally accurate. The Schedules are provided by the City of Vaughan without warranties of any kind, either expressed or implied.

SCHEDULE 3  
ESAs & ANSIs



- Environmentally Significant Areas
- Areas of Natural and Scientific Interest
- Greenbelt Plan Area<sup>1</sup>
- Oak Ridges Moraine Conservation Plan Area<sup>1</sup>
- See Minister's Decision on ORMCP Designation
- Municipal Boundary

<sup>1</sup> See Schedule 4 for limits and land use information of the Greenbelt Plan Area and Oak Ridges Moraine Conservation Plan Area

Index of Environmentally Significant Areas

| Area Name                 | ESA # | Watershed    |
|---------------------------|-------|--------------|
| A Boyd's Rock Cress       | 20    | Humber River |
| B Boyd Forest             | 29    | Humber River |
| C Carex Peckii Area No. 2 | 23    | Humber River |
| D Clarence Street Forest  | 16    | Humber River |
| E East Humber River       | 127   | Humber River |
| F Elder Mills Forest      | 17    | Humber River |
| G Glassgo                 | 32    | Humber River |
| H Graham's Forest         | 24    | Humber River |
| I Graham's Forest Complex | 25    | Humber River |
| J Graham's Woods          | 27    | Humber River |
| K King-Vaughan Complex    | 137   | Humber River |
| L King Creek Forest       | 56    | Humber River |
| M Kortright Area          | 28    | Humber River |
| N McFayden Forest         | 30    | Humber River |
| O McLeans's Forest        | 26    | Humber River |
| P Pine Grove Forest       | 19    | Humber River |
| Q Pine Valley Forest      | 21    | Humber River |
| R Smith's Beech Forest    | 18    | Humber River |
| S Sprengel's Forest       | 31    | Humber River |
| T Woodbridge Cut          | 15    | Humber River |
| U Baker's Wood's          | 128   | Don River    |
| V McGill Area             | 73    | Don River    |

Index of Areas Natural and Scientific Interest

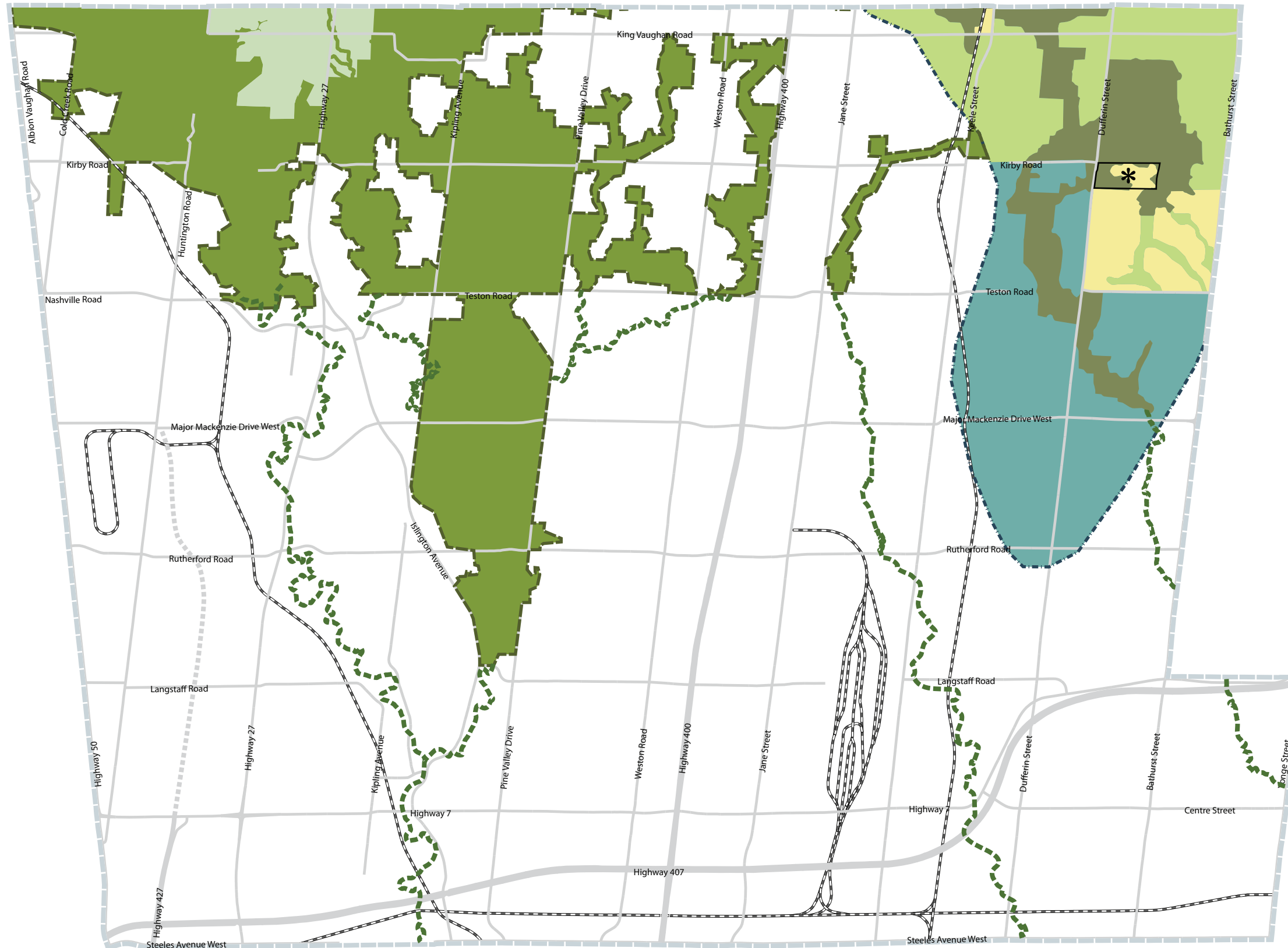
| Area Name                                 | Significance             |
|---|--------------------------|
| 1 Woodbridge Cut                          | Provincially Significant |
| 2 Boyd Conservation Area & Adjacent Lands | Provincially Significant |
| 3 Bakers Woods                            | Provincially Significant |
| 4 Kleinburg Woodlots                      | Regionally Significant   |
| 5 Humber River                            | Regionally Significant   |
| 6 Maple Uplands and Kettle Wetlands       | Regionally Significant   |
| 7 Oak Ridges Moraine Maple Spur           | Regionally Significant   |



The City of Vaughan makes every effort to ensure that Schedules are free of errors but does not assert that the schedules are spatially, tabularly or temporally accurate. The Schedules are provided by the City of Vaughan without warranties of any kind, either expressed or implied.

SCHEDULE 4

# Oak Ridges Moraine Conservation Plan & Greenbelt Plan Areas



- Greenbelt**
- Greenbelt Plan Area
  - Greenbelt Natural Heritage System
  - Greenbelt Countryside
  - Greenbelt Plan External Linkages
- Oak Ridges Moraine**
- Oak Ridges Moraine Conservation Plan Area
  - Oak Ridges Moraine Settlement Area
  - Oak Ridges Moraine Natural Core
  - Oak Ridges Moraine Natural Linkage
  - Oak Ridges Moraine Countryside
- See Minister's Decision on ORMCP Designation
- Municipal Boundary

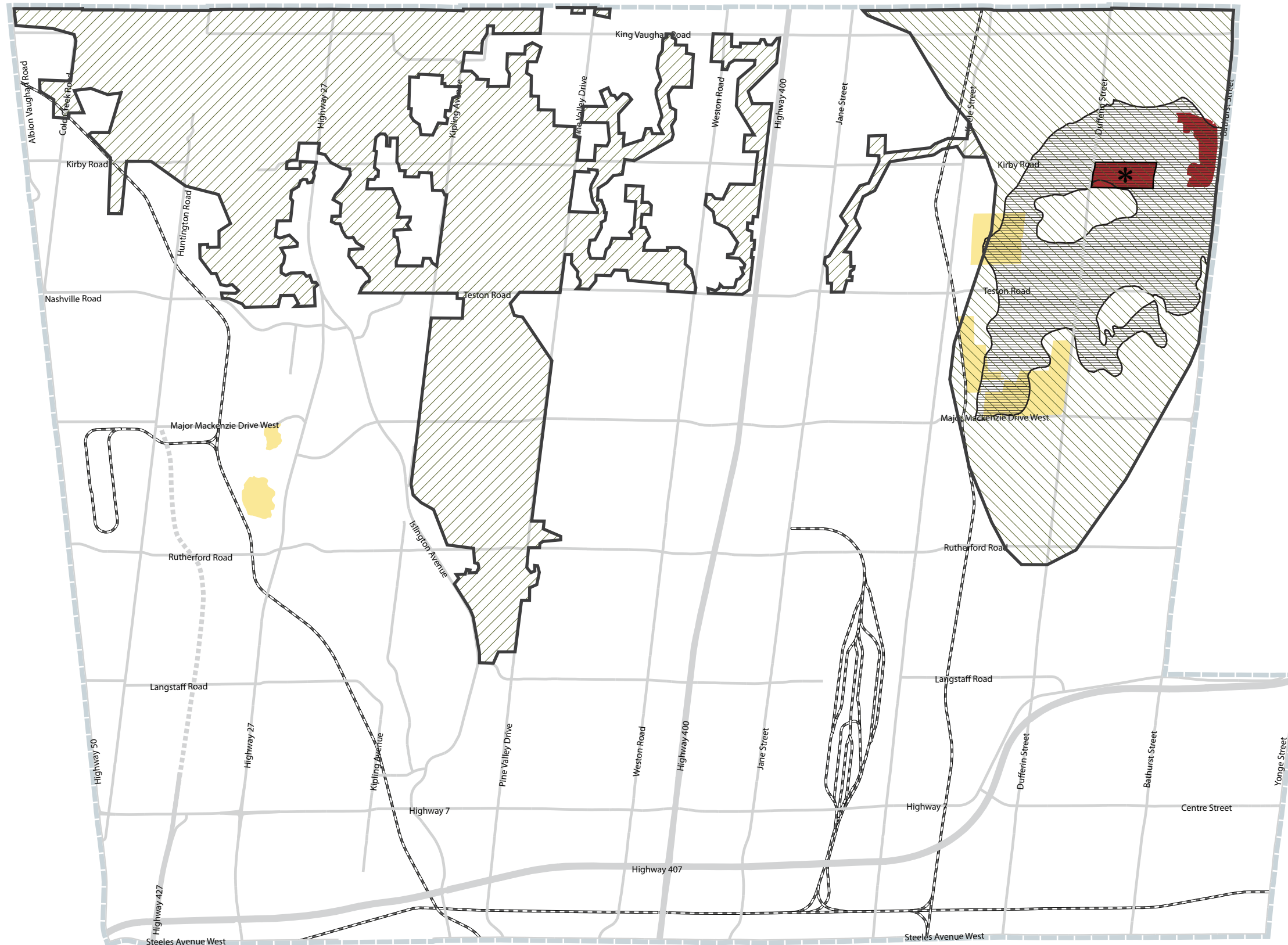




The City of Vaughan makes every effort to ensure that Schedules are free of errors but does not assert that the schedules are spatially, tabularly or temporally accurate. The Schedules are provided by the City of Vaughan without warranties of any kind, either expressed or implied.

SCHEDULE 5

# Mineral Aggregate Resources



- Aggregate Resource Areas
- Former Aggregate Extraction Operation
- Secondary Sand and Gravel Resource Area<sup>1</sup>
- Greenbelt Plan Area<sup>1</sup>
- Oak Ridges Moraine Conservation Plan Area<sup>2</sup>
- \* See Minister's Decision on ORMCP Designation
- Municipal Boundary

<sup>1</sup> Source: The Ministry of Northern Development and Mines

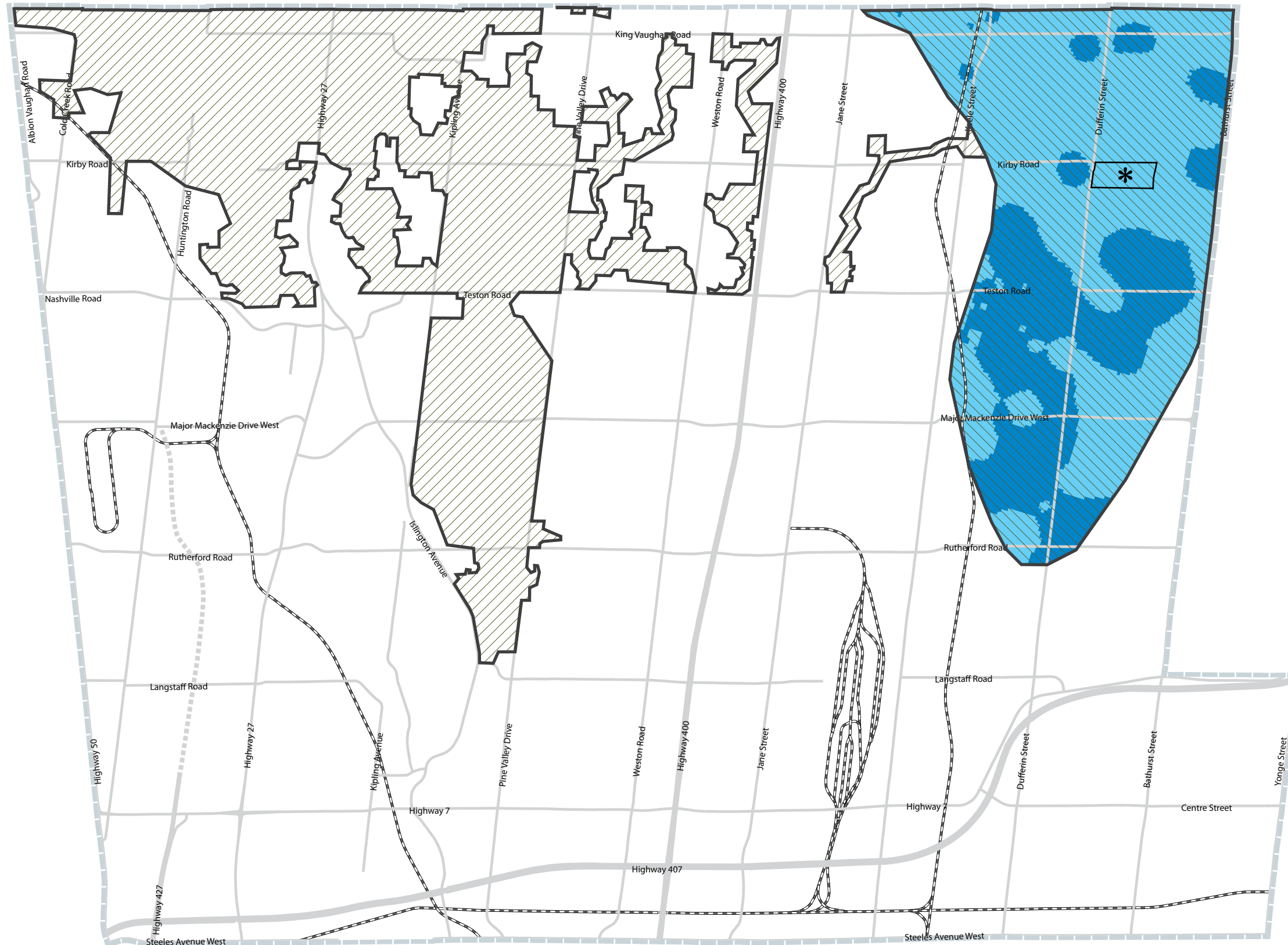
<sup>2</sup> See Schedule 4 for limits and land use information of the Greenbelt Plan Area and Oak Ridges Moraine Conservation Plan Area



The City of Vaughan makes every effort to ensure that Schedules are free of errors but does not assert that the schedules are spatially, tabularly or temporally accurate. The Schedules are provided by the City of Vaughan without warranties of any kind, either expressed or implied.

SCHEDULE 6

# Aquifer Vulnerability



- Low Vulnerability Aquifer
- High Vulnerability Aquifer
- Greenbelt Plan Area<sup>1</sup>
- Oak Ridges Moraine Conservation Plan Area<sup>1</sup>
- \* See Minister's Decision on ORMCP Designation
- Municipal Boundary

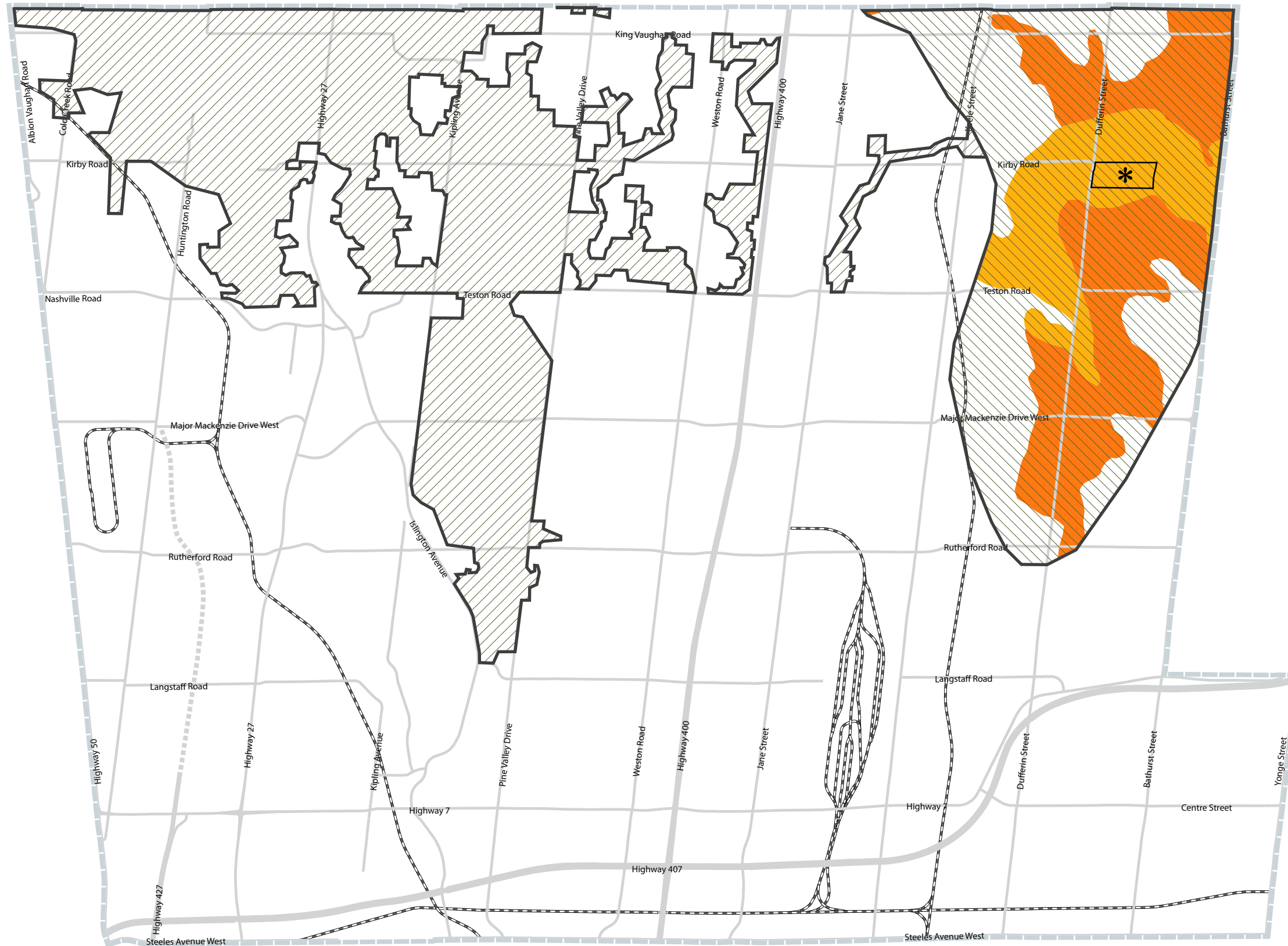
<sup>1</sup> See Schedule 4 for limits and land use information of the Greenbelt Plan Area and Oak Ridges Moraine Conservation Plan Area



The City of Vaughan makes every effort to ensure that Schedules are free of errors but does not assert that the schedules are spatially, tabularly or temporally accurate. The Schedules are provided by the City of Vaughan without warranties of any kind, either expressed or implied.

SCHEDULE 7

# Landform Conservation



- Category 1
- Category 2

- Greenbelt Plan Area<sup>1</sup>
- Oak Ridges Moraine Conservation Plan Area<sup>1</sup>

- \* See Minister's Decision on ORMCP Designation
- Municipal Boundary






<sup>1</sup> See Schedule 4 for limits and land use information of the Greenbelt Plan Area and Oak Ridges Moraine Conservation Plan Area



The City of Vaughan makes every effort to ensure that Schedules are free of errors but does not assert that the schedules are spatially, tabularly or temporally accurate. The Schedules are provided by the City of Vaughan without warranties of any kind, either expressed or implied.

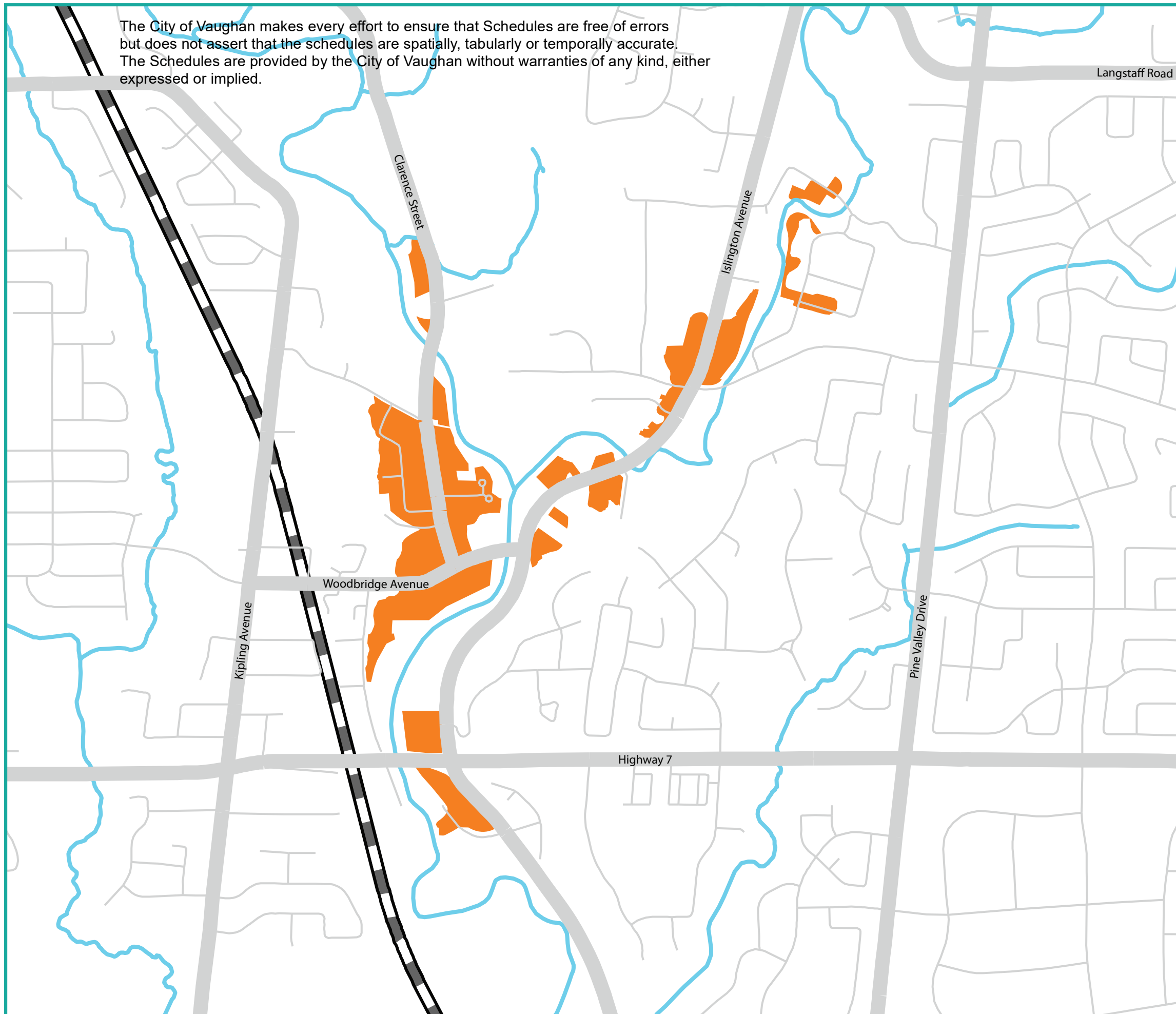
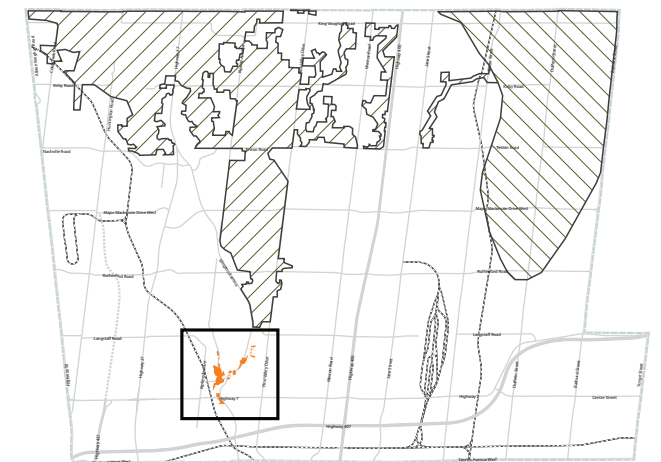
SCHEDULE 8

## Special Policy Areas

-  Special Policy Areas
-  Watercourses
-  Greenbelt Plan Area<sup>1</sup>
-  Oak Ridges Moraine Conservation Plan Area<sup>1</sup>
-  Municipal Boundary

The City of Vaughan makes every effort to ensure that Schedules are free of errors but does not assert that the schedules are spatially, tabularly or temporally accurate. The Schedules are provided by the City of Vaughan without warranties of any kind, either expressed or implied.

<sup>1</sup> See Schedule 4 for limits and land use information of the Greenbelt Plan Area and Oak Ridges Moraine Conservation Plan Area

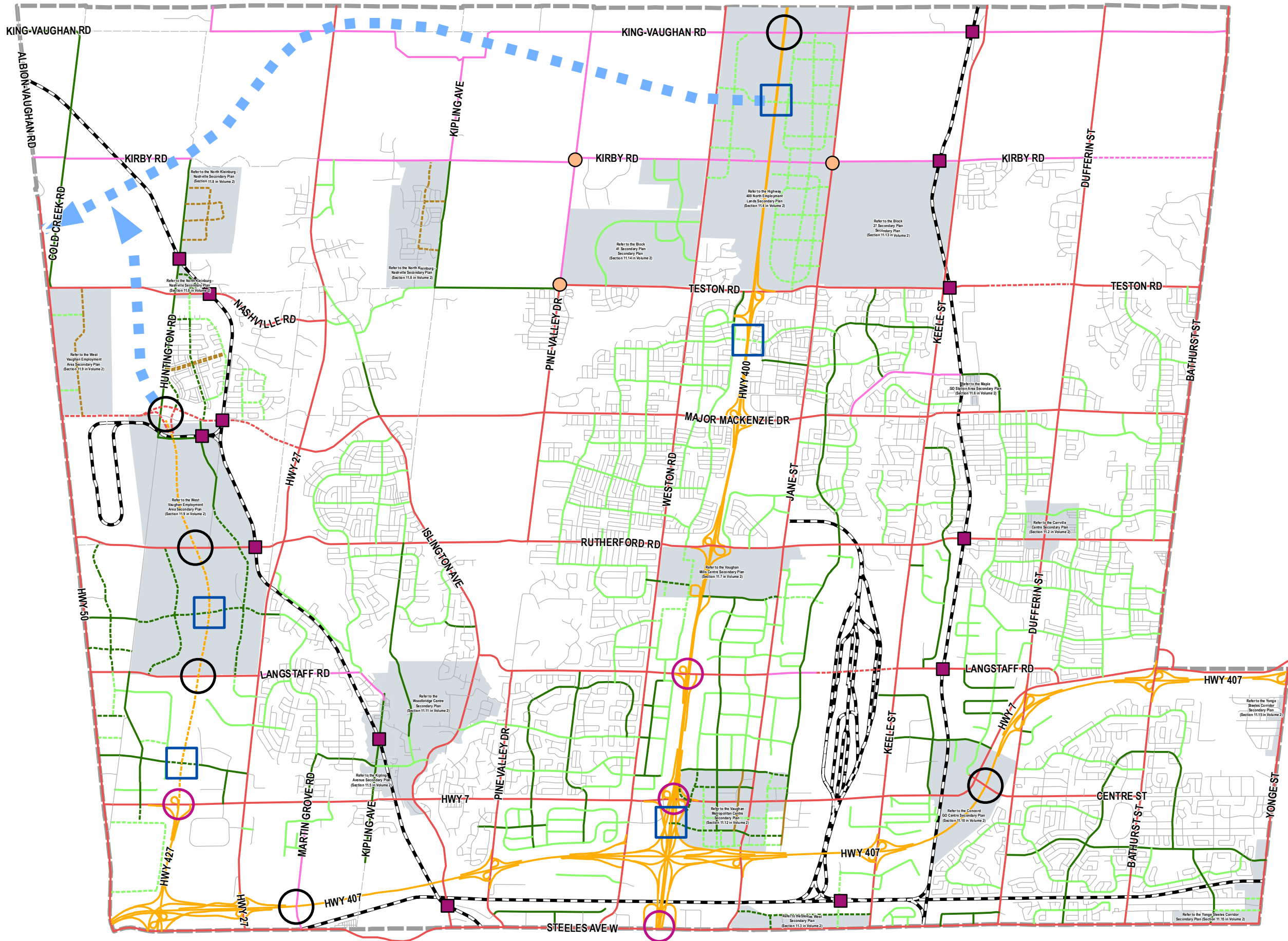


The City of Vaughan makes every effort to ensure that Schedules are free of errors but does not assert that the schedules are spatially, tabularly or temporally accurate. The Schedules are provided by the City of Vaughan without warranties of any kind, either expressed or implied.

# SCHEDULE 9



## Future Transportation Network



- Freeway (Provincial)
- Major Arterial (Regional)
- Minor Arterial (36m)
- Major Collector (26m)
- Minor Collector (24m proposed/23m existing)
- Special Classification (Refer to Secondary Plans)
- Local
- Proposed New Road Link<sup>1</sup>
- GTA West Corridor<sup>2</sup> and Hwy. 427 extension<sup>3</sup>
- Interchange Improvements
- New Interchanges
- Future Hwy 400 Series Road Crossings
- Grade Separation
- Jog Elimination
- Railway
- Areas Subject to Secondary Plans
- City of Vaughan Boundary

<sup>1</sup>Alignments are conceptual

<sup>2</sup>Alignments are conceptual and subject to an Environmental Assessment

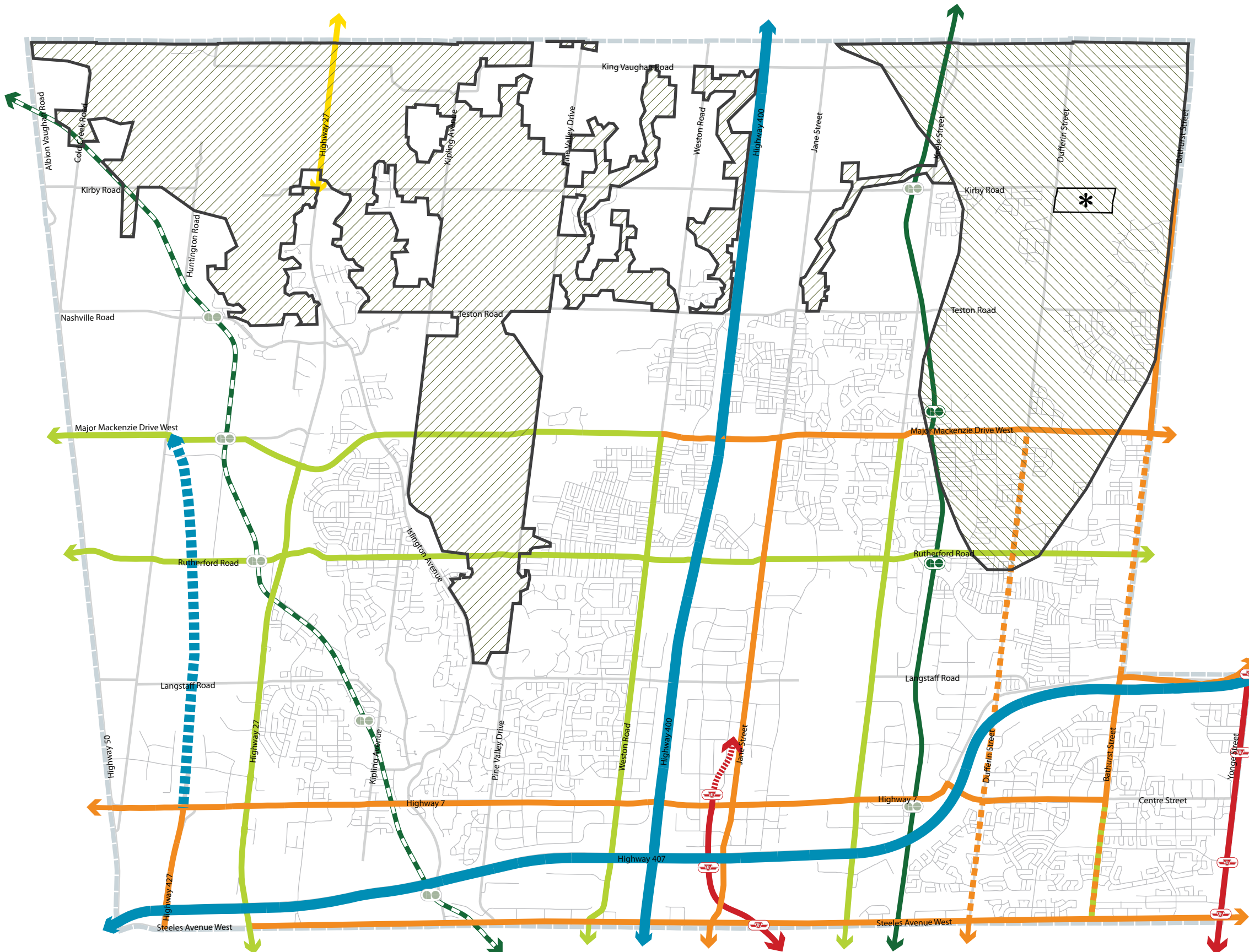
<sup>3</sup>Alignment and Corridor are currently under consideration by the Province



The City of Vaughan makes every effort to ensure that Schedules are free of errors but does not assert that the schedules are spatially, tabularly or temporally accurate. The Schedules are provided by the City of Vaughan without warranties of any kind, either expressed or implied.

SCHEDULE 10

# Major Transit Network



- Existing Commuter Rail Line
- Proposed Commuter Rail Line
- Existing GO Station
- Proposed GO Station
- Subway Extension
- Conceptual Subway Extension
- Subway Station
- Regional Rapid Transit Corridor
- Special Study Corridors<sup>1</sup>
- Regional Transit Priority Network
- Rural Transit Link
- Highway Bus Service
- Highway Bus Service Proposed
- Greenbelt Plan Area<sup>2</sup>
- Oak Ridges Moraine Conservation Plan Area<sup>2</sup>
- See Minister's Decision on ORMCP Designation
- Municipal Boundary

<sup>1</sup>Bathurst Street and Dufferin Street N/S Rapid Transit Corridor. Refer to York Region Official Plan

<sup>2</sup> See Schedule 4 for limits and land use information of the Greenbelt Plan Area and Oak Ridges Moraine Conservation Plan Area

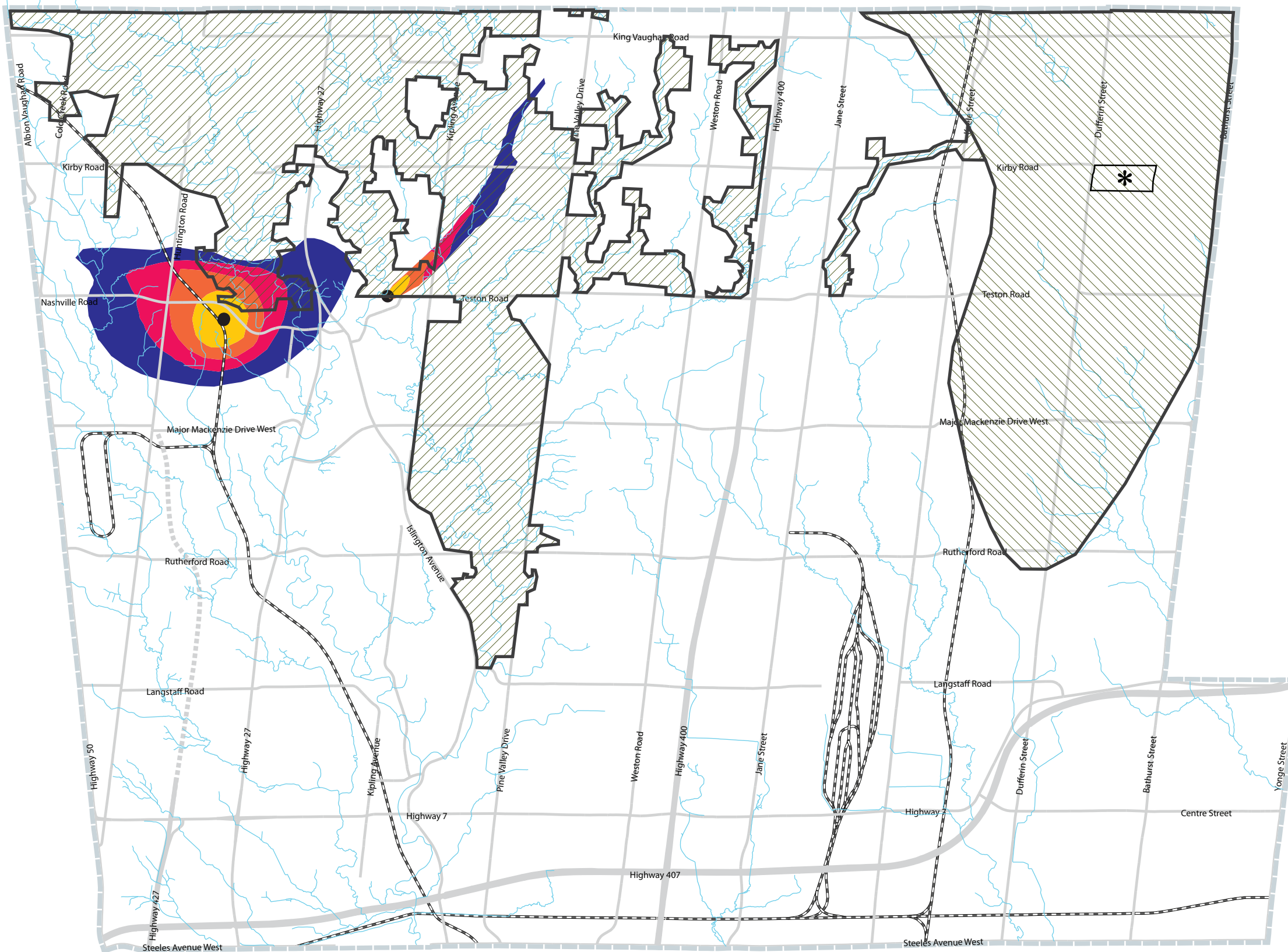
Local transit service will be provided to ensure service within a 5-minute walking distance (450-500 meters) for Vaughan residents.



The City of Vaughan makes every effort to ensure that Schedules are free of errors but does not assert that the schedules are spatially, tabularly or temporally accurate. The Schedules are provided by the City of Vaughan without warranties of any kind, either expressed or implied.

SCHEDULE 11

# Wellhead Protection Areas



- Active Wellhead 100m Radius
- 0 - 2 year zone
- 2 - 5 year zone
- 5 - 10 year zone
- 10 - 25 year zone
- Watercourse
- ▨ Greenbelt Plan Area<sup>1</sup>
- ▩ Oak Ridges Moraine Conservation Plan Area<sup>1</sup>
- ⊛ See Minister's Decision on ORMCP Designation
- ⋯ Municipal Boundary

<sup>1</sup> See Schedule 4 for limits and land use information of the Greenbelt Plan Area and Oak Ridges Moraine Conservation Plan Area



The City of Vaughan makes every effort to ensure that Schedules are free of errors but does not assert that the schedules are spatially, tabularly or temporally accurate. The Schedules are provided by the City of Vaughan without warranties of any kind, either expressed or implied.

SCHEDULE 12

# TransCanada Pipe Facilities



- TransCanada Canadian Mainline
- Compressor Station
- Greenbelt Plan Area<sup>1</sup>
- Oak Ridges Moraine Conservation Plan Area<sup>1</sup>
- See Minister's Decision on ORMCP Designation
- Municipal Boundary

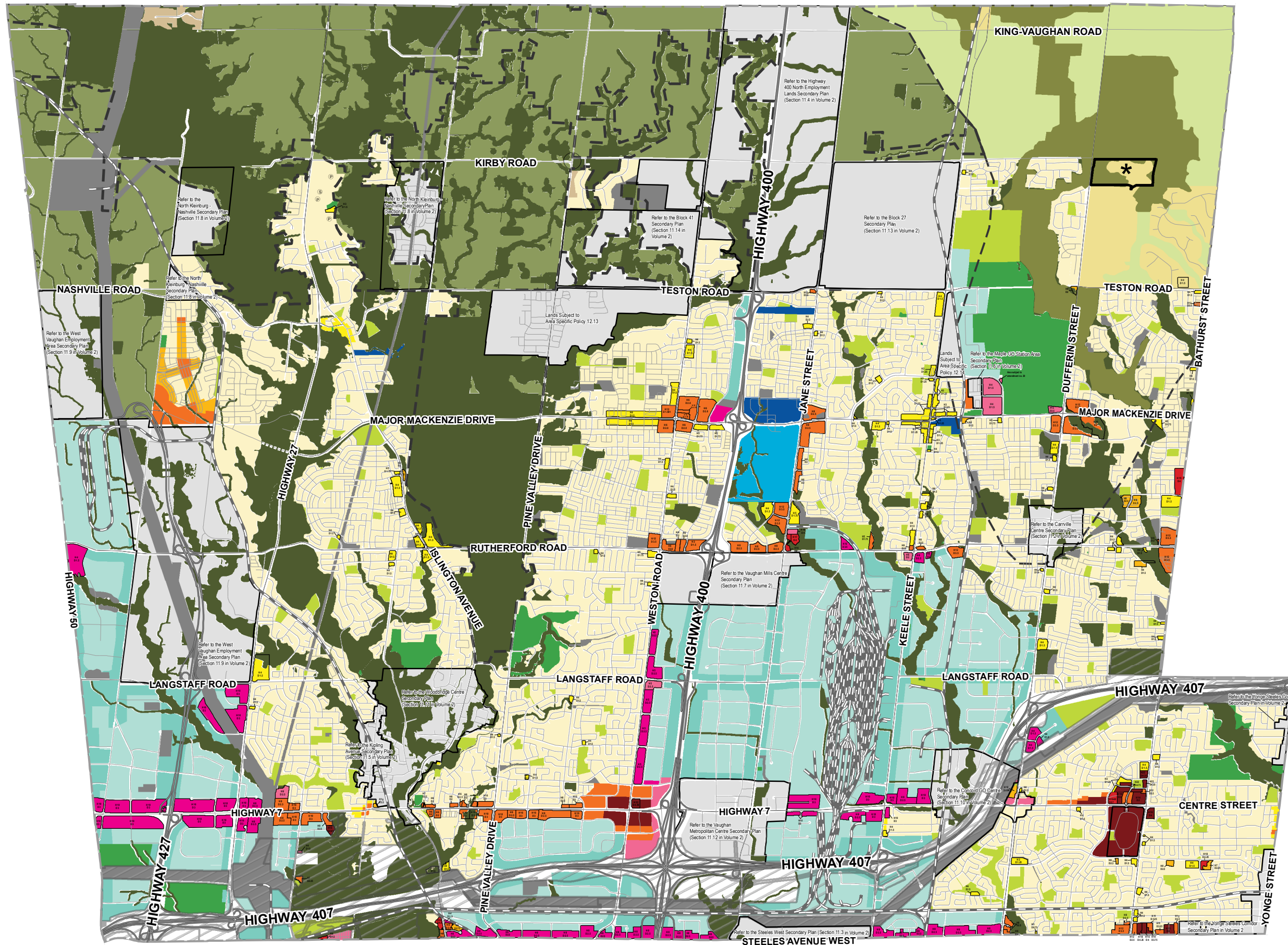
<sup>1</sup> See Schedule 4 for limits and land use information of the Greenbelt Plan Area and Oak Ridges Moraine Conservation Plan Area





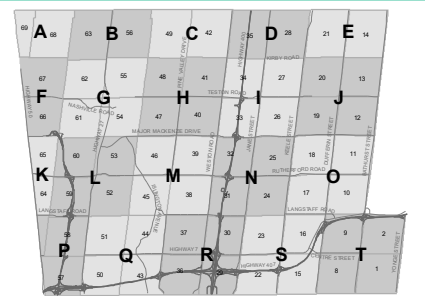
The City of Vaughan makes every effort to ensure that Schedules are free of errors but does not assert that the schedules are spatially, tabularly or temporally accurate. The Schedules are provided by the City of Vaughan without warranties of any kind, either expressed or implied.

### Land Use




- Natural Areas
- Parks
- Private Open Spaces
- Agricultural
- Rural
- Low-Rise Residential
- Low-Rise Mixed-Use
- Mid-Rise Residential
- Mid-Rise Mixed-Use
- High-Rise Residential
- High-Rise Mixed-Use
- Community Commercial Mixed-Use
- Employment Commercial Mixed-Use
- General Employment
- Prestige Employment
- Major Institutional
- New Community
- Theme Park and Entertainment
- Parkway Belt West Lands
- Infrastructure and Utilities
- Lands Subject to Secondary Plans or Particular Area Specific Plans<sup>1</sup>
- Roads
- Railway
- Greenbelt Plan Area & Oak Ridges Moraine Conservation Plan Area
- Natural Core
- Natural Linkage
- Countryside
- Hamlets
- Area Subject to ORMCA Minister's Zoning Order
- Municipal Boundary
- Proposed Park<sup>2</sup>
- Proposed School<sup>2</sup>

1. Refer to Schedules 14B-C for Lands Subject to Area and Site Specific Policies in Volume 2  
 2. Locations are conceptual and may be modified without an amendment to this plan.

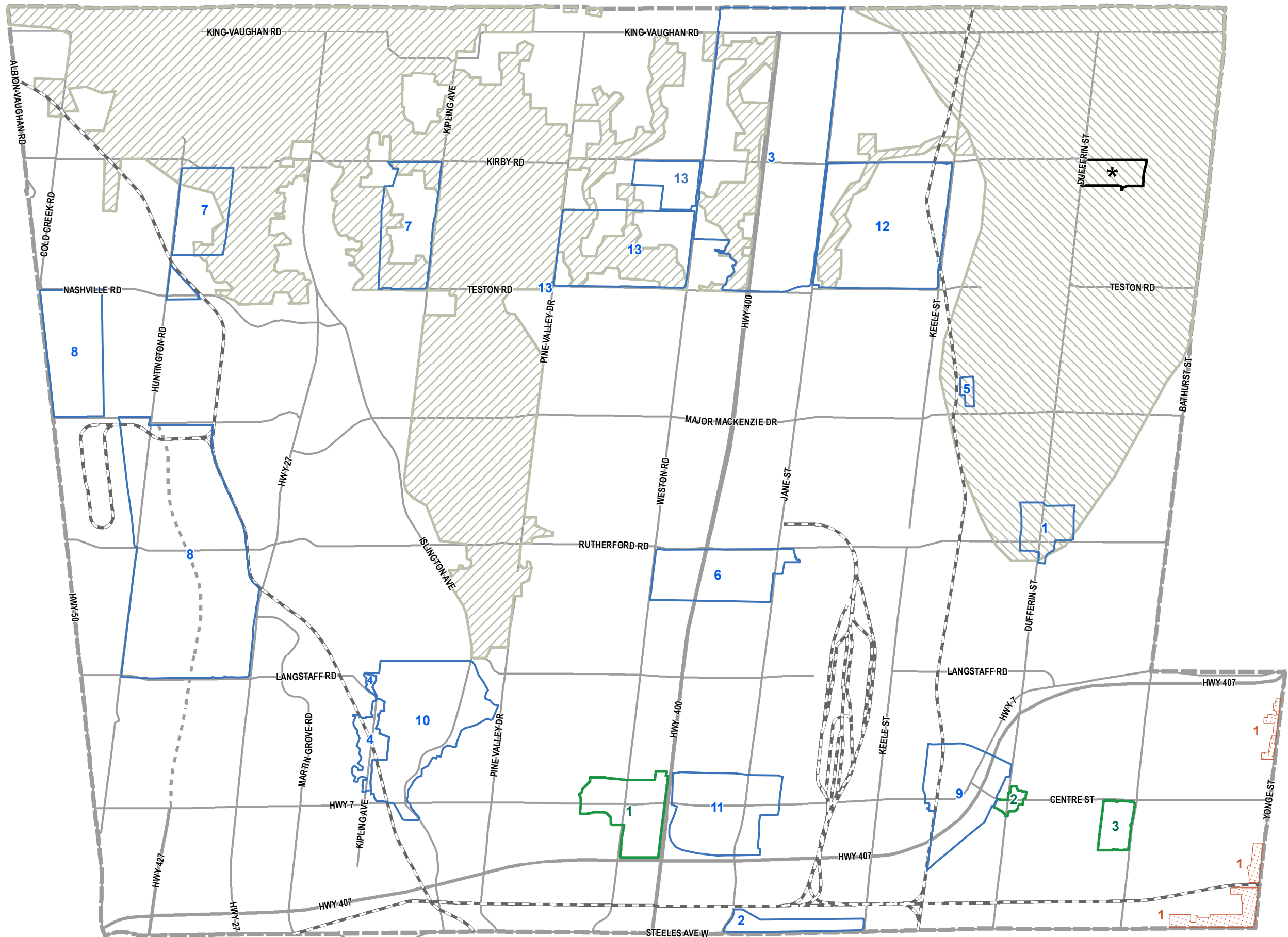


The City of Vaughan makes every effort to ensure that Schedules are free of errors but does not assert that the schedules are spatially, tabularly or temporally accurate. The Schedules are provided by the City of Vaughan without warranties of any kind, either expressed or implied.

# SCHEDULE 14A



## Areas Subject to Secondary Plans



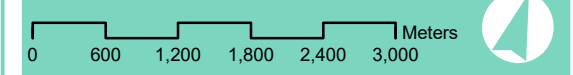
- Site #, Name, and Chapter**
- 1, Carrville Centre, 11.2
  - 2, Steeles West, 11.3
  - 3, Highway 400 North Employment Lands, 11.4
  - 4, Kipling Avenue, 11.5
  - 5, Maple GO Station Area, 11.6
  - 6, Vaughan Mills Centre, 11.7
  - 7, North Kleinburg - Nashville, 11.8
  - 8, West Vaughan Employment Area, 11.9
  - 9, Concord GO Centre, 11.10
  - 10, Woodbridge Centre, 11.11
  - 11, Vaughan Metropolitan Centre, 11.12
  - 12, Block 27, 11.13
  - 13, Block 41, 11.14

**Secondary Plan Areas to be Approved (adopted by Council on Sept. 7, 2010)**

- 1, Yonge Steeles Corridor
- Required Secondary Plan Areas**
- 1, Weston Rd. & Highway 7
  - 2, Dufferin St. & Centre St.
  - 3, Promenade Mall

- \* See Minister's Decision on ORMCP Designation
- City of Vaughan Boundary

October, 2021



The City of Vaughan makes every effort to ensure that Schedules are free of errors but does not assert that the schedules are spatially, tabularly or temporally accurate. The Schedules are provided by the City of Vaughan without warranties of any kind, either expressed or implied.

# SCHEDULE 14B



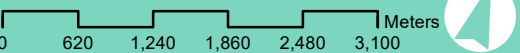
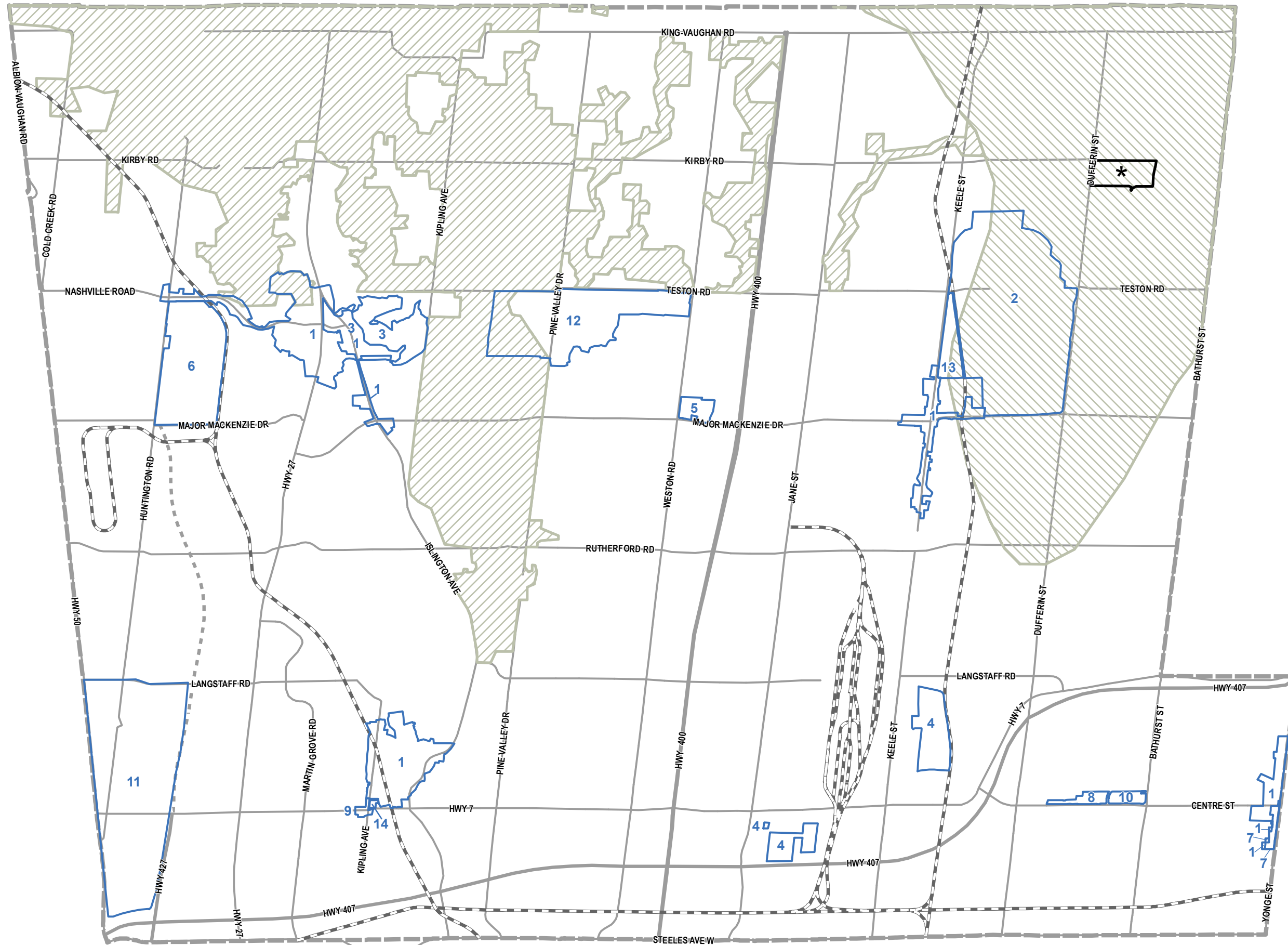
## Areas Subject to Area Specific Plans

### Site #, Name, and Chapter

- 1, Heritage Conservation Districts, 12.2
- 2, Keele Valley Landfill Area, 12.3
- 3, Kleinburg Core, 12.4
- 4, Adult Entertainment Uses, 12.5
- 5, NE Quadrant of Major Mackenzie Dr. & Weston Rd., 12.6
- 6, Block 61 West - Nashville Heights, 12.7
- 7, Yonge Street Corridor in Thornhill, 12.8
- 8, Centre Street Corridor, 12.9
- 9, Kipling Avenue & Highway 7, 12.10
- 10, Bathurst & Centre Street, 12.11
- 11, Huntington Business Park, 12.12
- 12, Block 40/47, 12.13
- 13, Maple Industrial Area, 12.14
- 14, NE Quadrant of Kipling Ave. & Highway 7, 12.15

\* See Minister's Decision on ORMCP Designation

Municipal Boundary



The City of Vaughan makes every effort to ensure that Schedules are free of errors but does not assert that the schedules are spatially, tabularly or temporally accurate. The Schedules are provided by the City of Vaughan without warranties of any kind, either expressed or implied.

# SCHEDULE 14C



## Areas Subject to Site Specific Plans

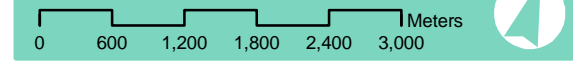
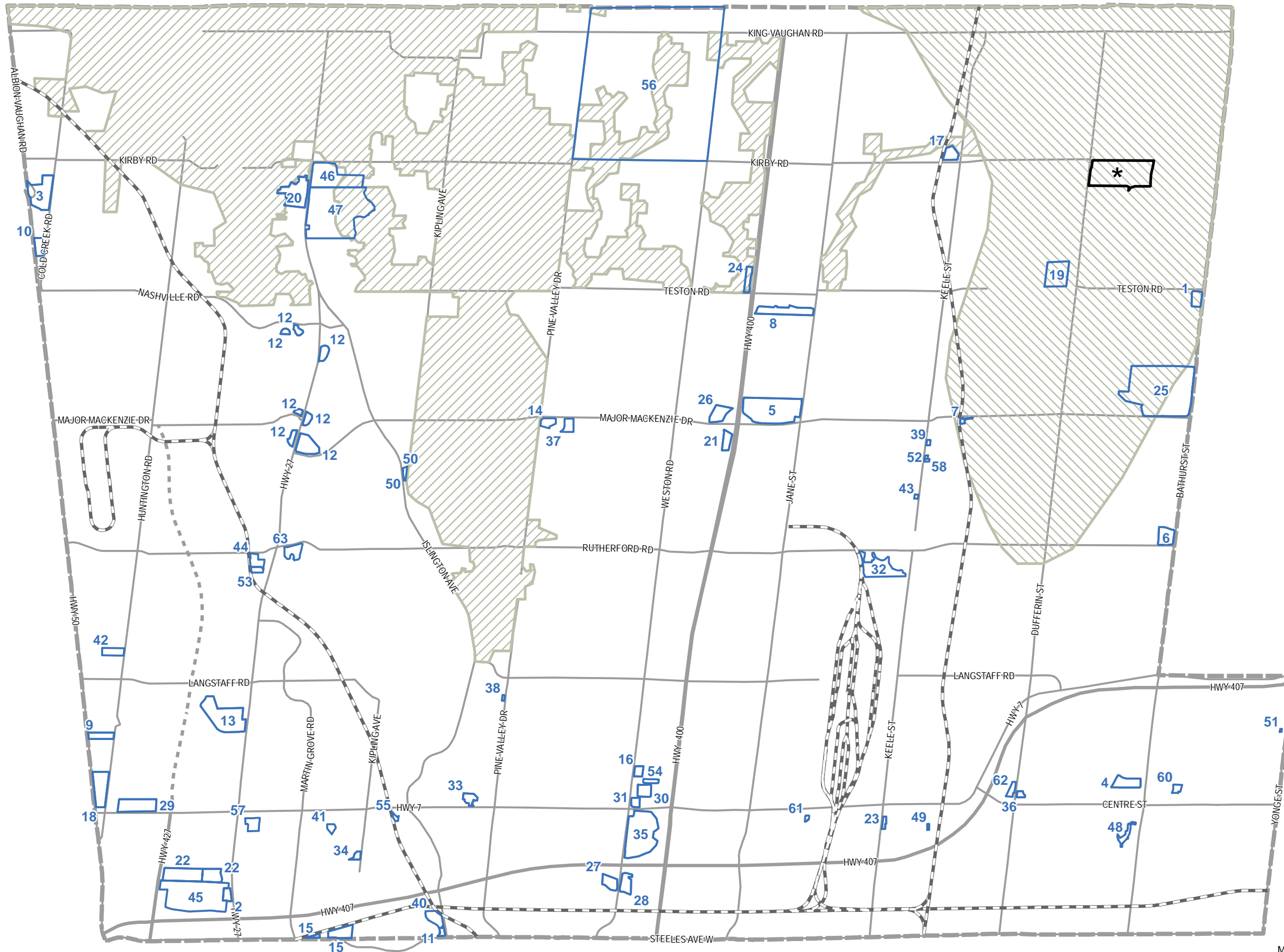
### Site #, Name, Chapter

- 1 1, SW Corner of Bathurst St. & Teston Rd., 13.2
- 2 2, 7242 Highway 27, 13.3
- 3 3, 11245 Highway 50, 13.4
- 4 4, Thornhill Liberty Lands, 13.5
- 5 5, Vaughan Healthcare Campus, 13.6
- 6 6, NW Corner of Rutherford Rd. & Bathurst St., 13.7
- 7 7, 2057 Major Mackenzie Dr., 13.8
- 8 8, Ahmadiyya Campus, 13.9
- 9 9, 8151 Highway 50, 13.10
- 10 10, 10901 Highway 50, 13.11
- 11 11, Steeles/Islington Ave. Services Review Area, 13.12
- 12 12, Valley Policy Areas, 13.13
- 13 13, 2107638/RioCan/SRF Vaughan, 13.14
- 14 14, 4433, 4455 & 4477 Major Mackenzie Dr., 13.15 (OPA #49)
- 15 15, NW Corner of Steeles Ave. W & Kipling Ave. S, 13.16
- 16 16, 7979 Weston Rd., 13.17
- 17 17, NW Corner of Keele St. & Kirby Rd., 13.18
- 18 18, Huntington South, 13.19
- 19 19, 1600 Teston Rd., 13.20
- 20 20, North Humber Extension, 13.21
- 21 21, 77 Eagleview Ht., 13.22 (OPA #7)
- 22 22, Parkwaybelt West Amendment Areas, 13.23
- 23 23, 7615-7675 Keele St., 13.24
- 24 24, 3400 Teston Rd., 13.25
- 25 25, NW Corner of Major Mackenzie Dr. & Bathurst St., 13.26
- 26 26, NE Corner of Cityview Blvd. & Major Mackenzie Dr., 13.27
- 27 27, 30 & 70 Aviva Park Dr., 13.28 (OPA #5)
- 28 28, SE Corner of Weston Rd. & Highway 407, 13.29
- 29 29, NW Corner of Highway 427 & Highway 7, 13.30
- 30 30, 140 Northview Blvd., 13.31
- 31 31, NE Corner of Weston Rd. & Highway 7, 13.32
- 32 32, 4650 Highway 7, 13.34 (OPA #11)
- 33 33, Kipling Ave. S, 13.35
- 34 34, Colossus Centre, 13.36
- 35 35, 7803 & 7815 Dufferin St., 13.37 (OPA # 17)

\* See Minister's Decision on ORMCP Designation

Municipal Boundary

Note: Legend details for sites 37 and onward are shown on next page



## Areas Subject to Site Specific Plans

### Site #, Name, and Chapter

- 37, 11, 31 & 51 Woodend Pl. & Blk 4265m-4149, 13.38 (OPA #19)
- 38, Rear Portion of 61, 71 & 83 Hayhoe Ave., 13.39 (OPA #18)
- 39, 9869, 9881 & 9891 Keele St., 13.40 (OPA #25)
- 40, 7082 Islington Ave., 13.41 (OPA #27)
- 41, 77 Woodstream Blvd., 13.42 (OPA #31)
- 42, 8500 Huntington Rd., 13.43 (OPA #32)
- 43, 9560 & 9570 Keele St., 13.43 (OPA #36)
- 44, 6061 & 6079 Rutherford Rd. & 134 & 140 Simmons St., 13.45 (OPA #38)
- 45, 7300 Regional Rd. 27, 13.46 (OPA #45)
- 46, 11363 Regional Rd. 27, 13.47 (OPA #47)
- 47, 11063 & 11191 Regional Rd. 27, 13.48 (OPA #48)
- 48; 1 Promenade Cir., 13.49 (OPA #46)
- 49, 23 Rockview Gd. & 10 Southview Dr., 13.50 (OPA #51)
- 50, 9681 & 9691 Islington Ave., 13.51 (OPA #52)
- 51, 5 Uplands Ave., 13.52
- 52, 9785 & 9797 Keele St., 13.53 (OPA #54)
- 53, 10, 20 & 25 Di Benedetto Ln. & 110 Simmons St., 13.54 (OPA #55)
- 54, 15 Jevlan Dr. & 156 Chrislea Rd., 13.55 (OPA #67)
- 55, South End Wallace St., 13.56
- 56, Block 42 Lands, 13.57
- 57, 131 & 155 Regalcrest Crt., 13.58
- 58, 9773 Keele St., 13.59 (OPA #62)
- 59, Not Yet Approved
- 60, 300 Atkinson Ave., 13.61 (OPA #65)
- 61, South (rear) Portion of 2685 Highway 7 & 44 Killaloe Rd., 13.62 (OPA #64)
- 62, 7850 Dufferin St., 13.63 (OPA #71)
- 63, 5859 Rutherford Rd., 13.64

See Minister's Decision on ORMCP Designation

Municipal Boundary

Note: Legend details for sites 1-36  
are shown on previous page