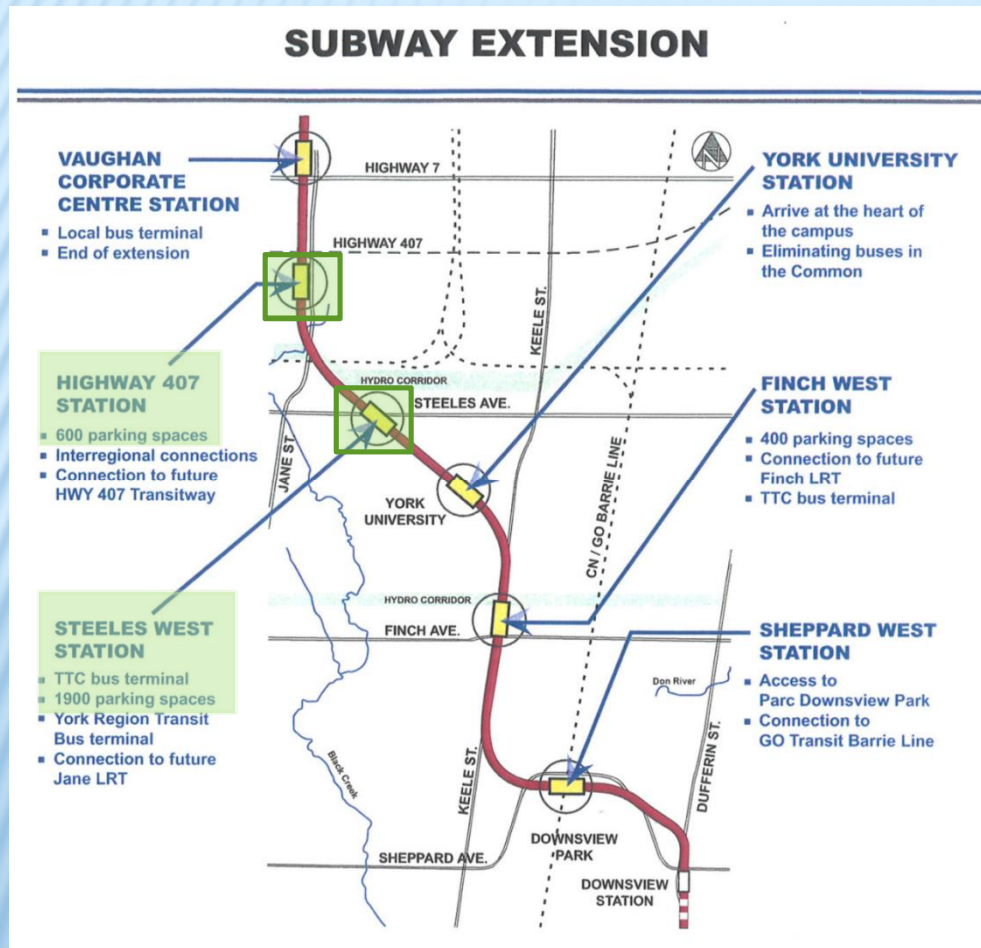


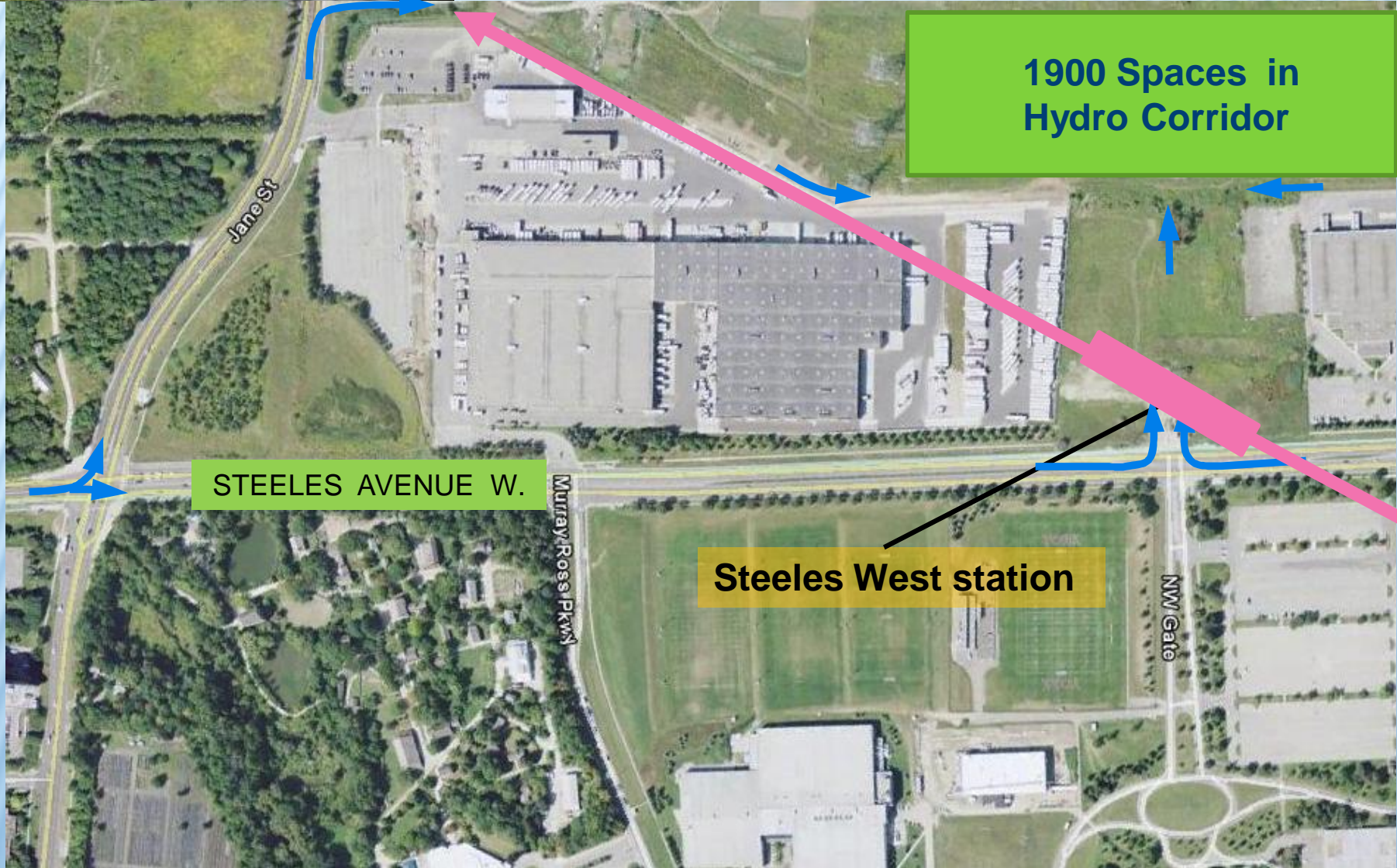


# Park-and-Ride

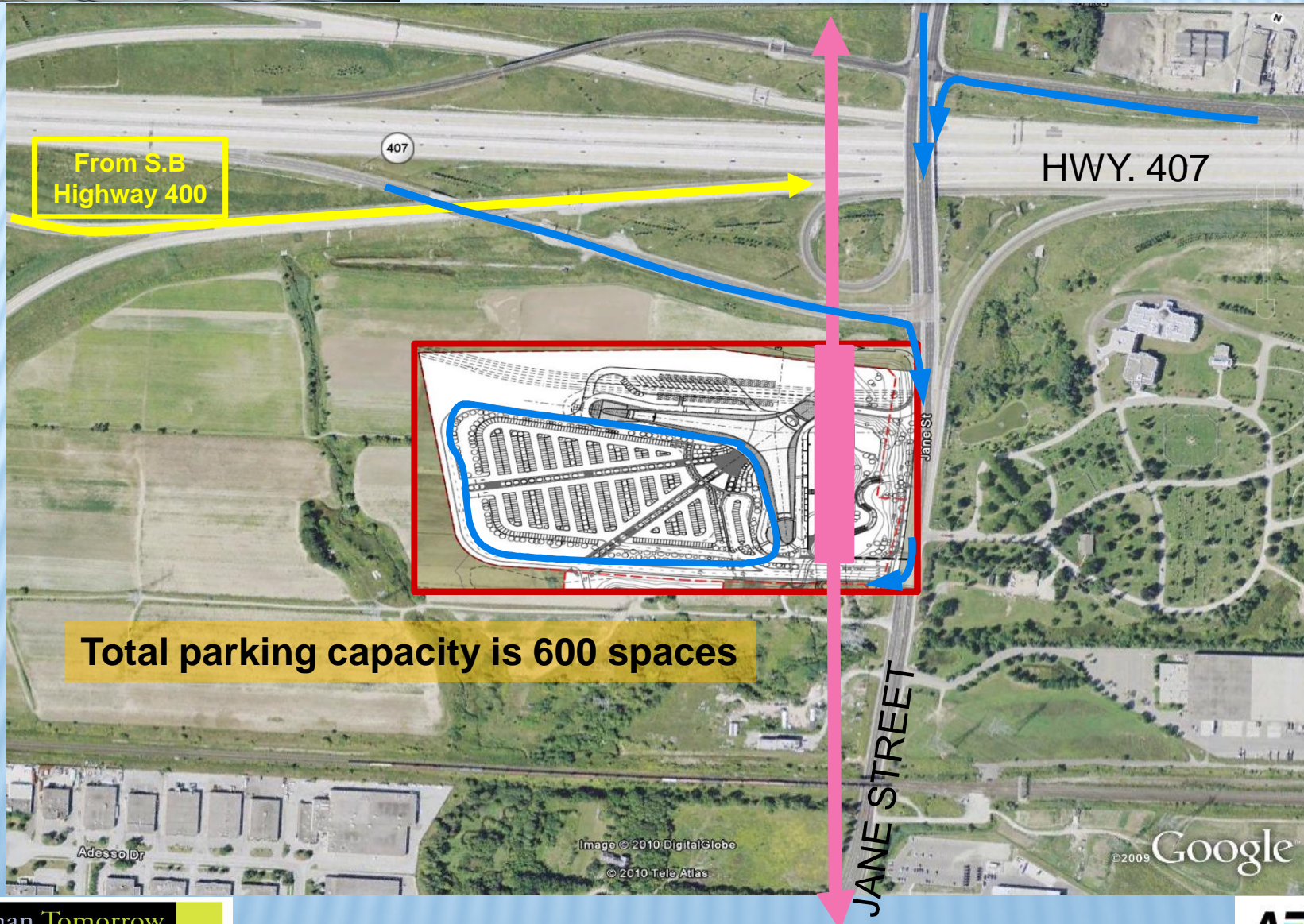


- ❖ Not consistent with long term VMC vision
- ❖ 600 spaces at 407
- ❖ 1900 spaces at Steeles
- ❖ Access constraints from S.B. Highway 400
- ❖ Will be demand for Park-and-Ride at VMC

# Park-and-Ride at Steeles West



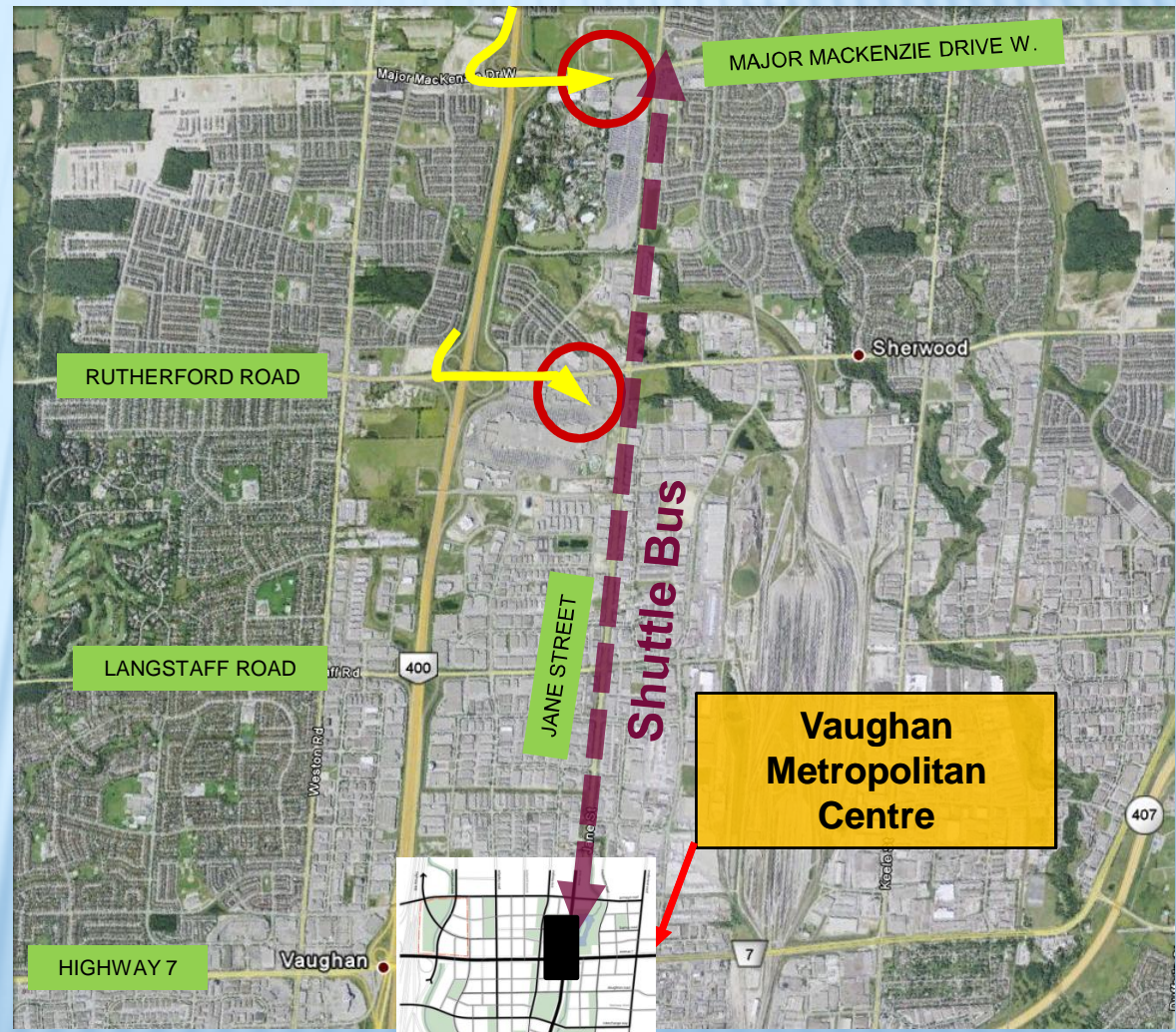
# Park-and-Ride at Jane St. and HWY. 407





# Park-and-Ride Alternatives North of VMC

- Need to explore options north of VMC
- Sites should be in close proximity to HWY. 400 interchanges
- Sites would be linked to VMC terminal via YRT or shuttle bus
- Opportunities exist for shared use facilities with private sector (eg. Canada's Wonderland, Vaughan Mills Mall)



Questions?

