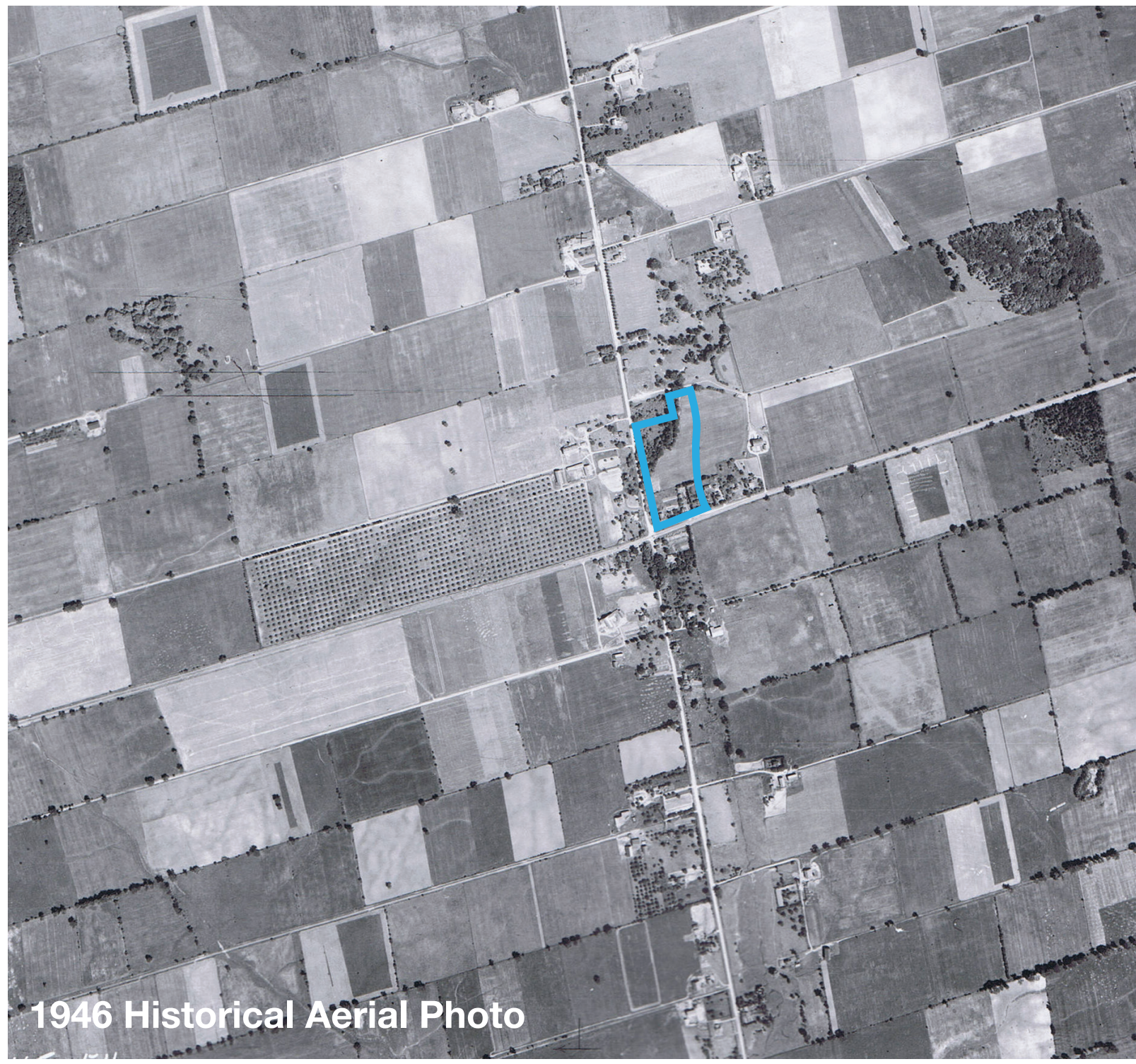
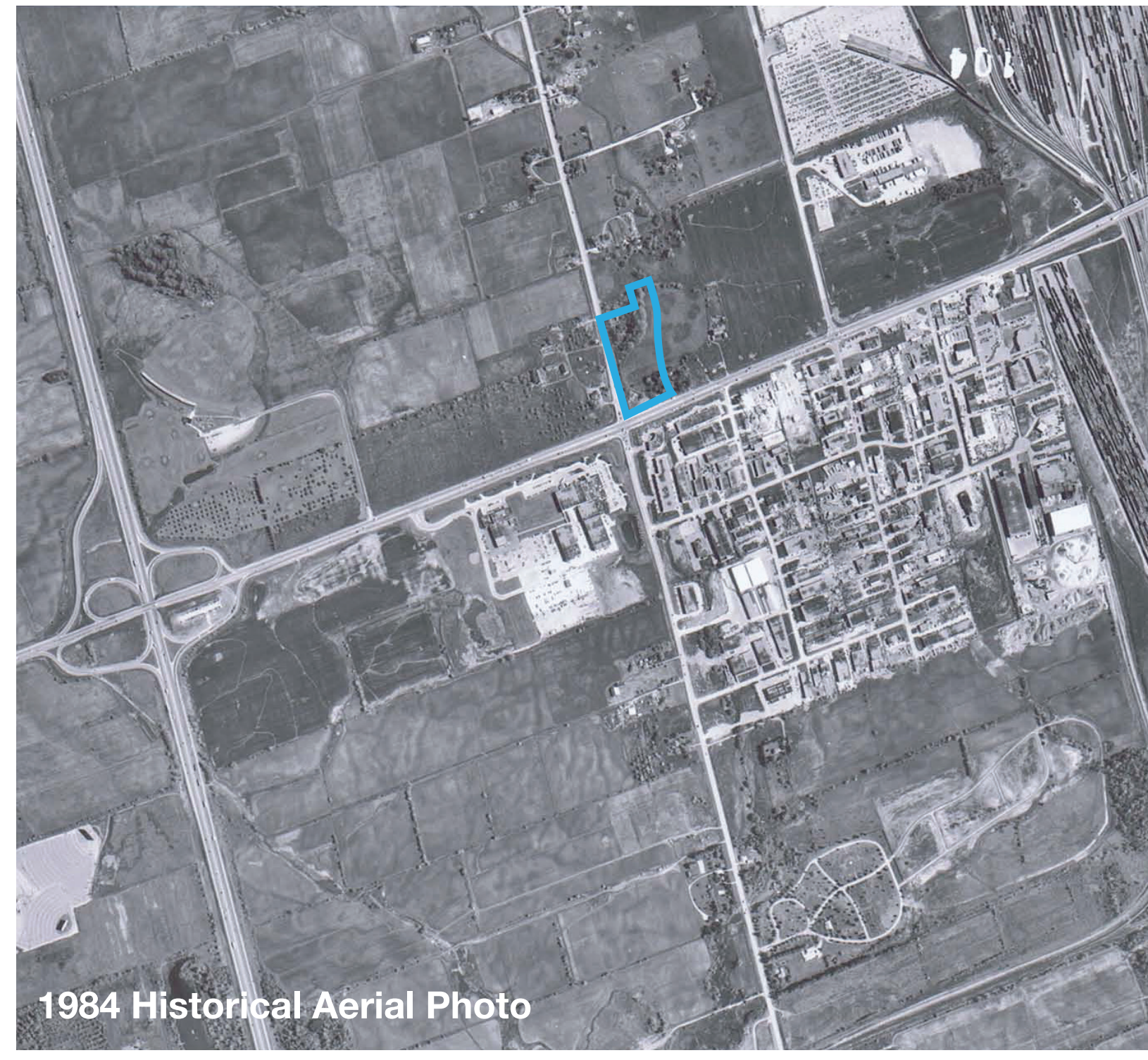


Edgeley Pond + Park / The Story



1946 Historical Aerial Photo



1984 Historical Aerial Photo



VMC + Watershed Context

Guiding Principles

1. Celebrate Storm Water

To integrate innovative stormwater management, improve water quality and the ability to manage stormwater during flood events. To celebrate the heritage of Black Creek and the roots of the Edgeley community in order to increase awareness to how the urban and natural environment can support both the environmental and social processes of the VMC.

2. Establish Habitat and Enhance Ecology

To enhance and strengthen existing ecologies, to introduce appropriate new habitats and enrich native flora.

3. Create New Connections

To provide a hierarchy of pedestrian walking circuits and multi-use trails throughout the park and to establish strong connections to the VMC.

4. Activate and Create New Opportunities

To encourage passive and active programming, children's play and discovery and provide un-programmed open spaces for gathering and pick-up sports.

5. Educate and Inform

To demonstrate and educate how to live sustainably; and to showcase the stormwater facility the dynamic processes that define the site, the changing nature of Black Creek and open water as well as the evolving ecologies and its relationship to larger regional systems.

6. Create an Iconic VMC Park

To make a strong statement using bold moves with landform, quality implementation and workmanship to create an iconic landscape and precedent for integrated sustainable design.

7. Design a Park for the Future

To design Edgeley Pond and Park as a flexible frame work, one that embraces and celebrates the site's important history, and can respond and adapt to changing needs of the community.

Design Vision

Edgeley Pond and Park is the next step in the evolution of the Vaughan Metropolitan Centre. Its dramatic topography, naturalized waterways, and woodland groves recall the areas rich landscape heritage, one that was originally dominated by apple orchards and rolling valley lands. This new open space will act as a **catalyst** for the VMC by supporting its dynamic and fast-paced transformation through innovative ecologically-sensitive stormwater management design, creation of unique spaces and the seamless integration of parkland amenities where VMC residents and visitors can **interact, learn, play, and grow**.

Stormwater Management (SWM)

In its current condition, Edgeley Pond is undersized in its operation as a SWM facility. Reorganization and retrofitting of the pond is required to unlock further development potential in the area, provide water quality and flood control and optimize ecological function.

As part of the proposed Black Creek Corridor Renewal Process running along Jane Street south of Highway 7 in the VMC, Edgeley Pond and Park will form an important public destination with a mandate to resolve stormwater management and ecological issues, and cultivate resilience to climate change.

The key goals of this important city project are to: improve stormwater management and Black Creek corridor functional design, improve ecological function and provide functional natural habitats, generate spaces for active and passive recreation, showcase design innovation, plan for strategic phasing and implementation, enable further development of the downtown and deliver a first-of-its kind destination for Vaughan and the Region of York.

Purpose Of The Meeting

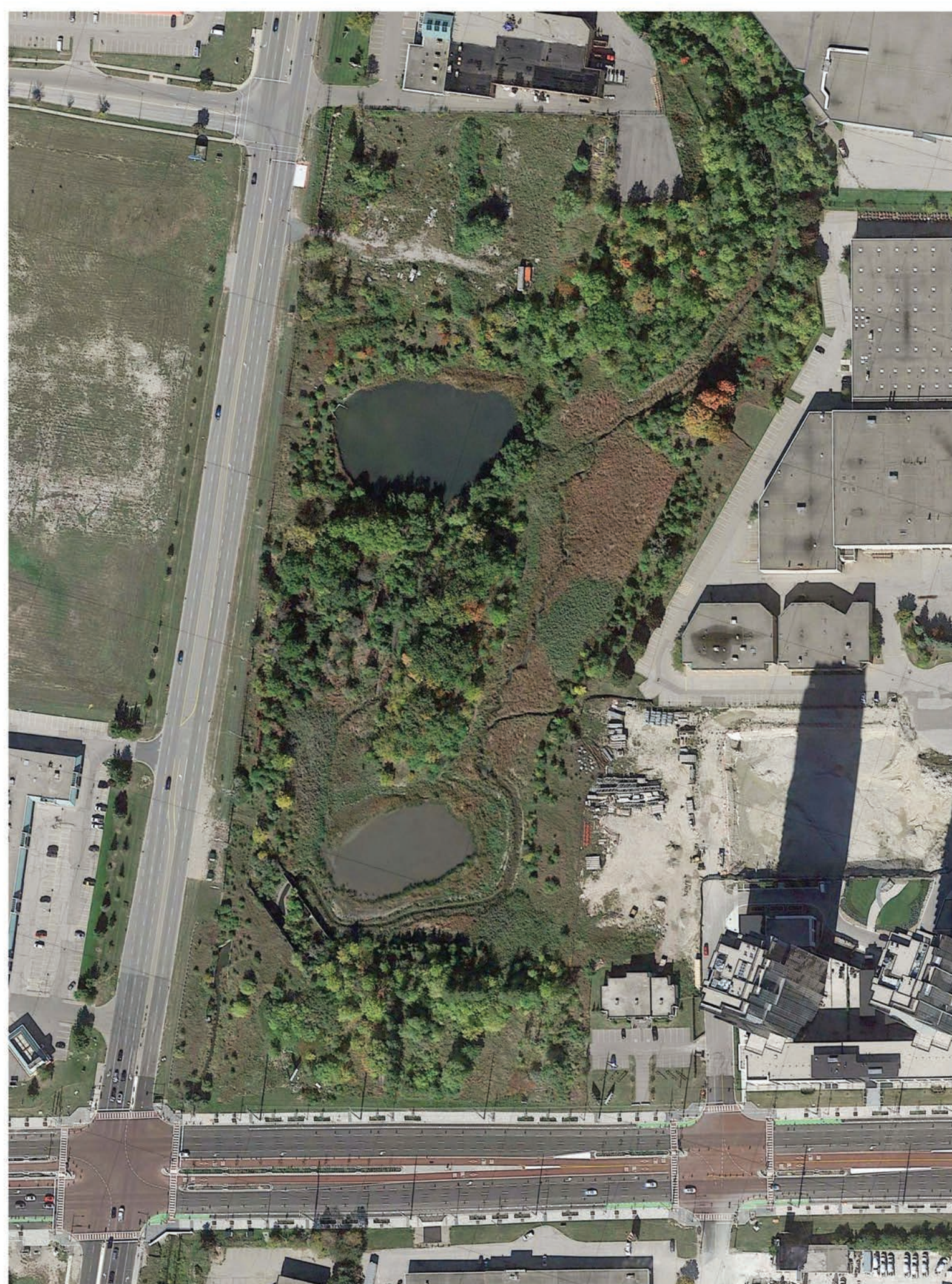
This Public Meeting is an opportunity for you to review the three proposed concepts and provide input. City of Vaughan staff and members of the Design Team are available to answer any questions that you may have about the project and how it may impact you.

We will present the final design to you in early fall 2017.

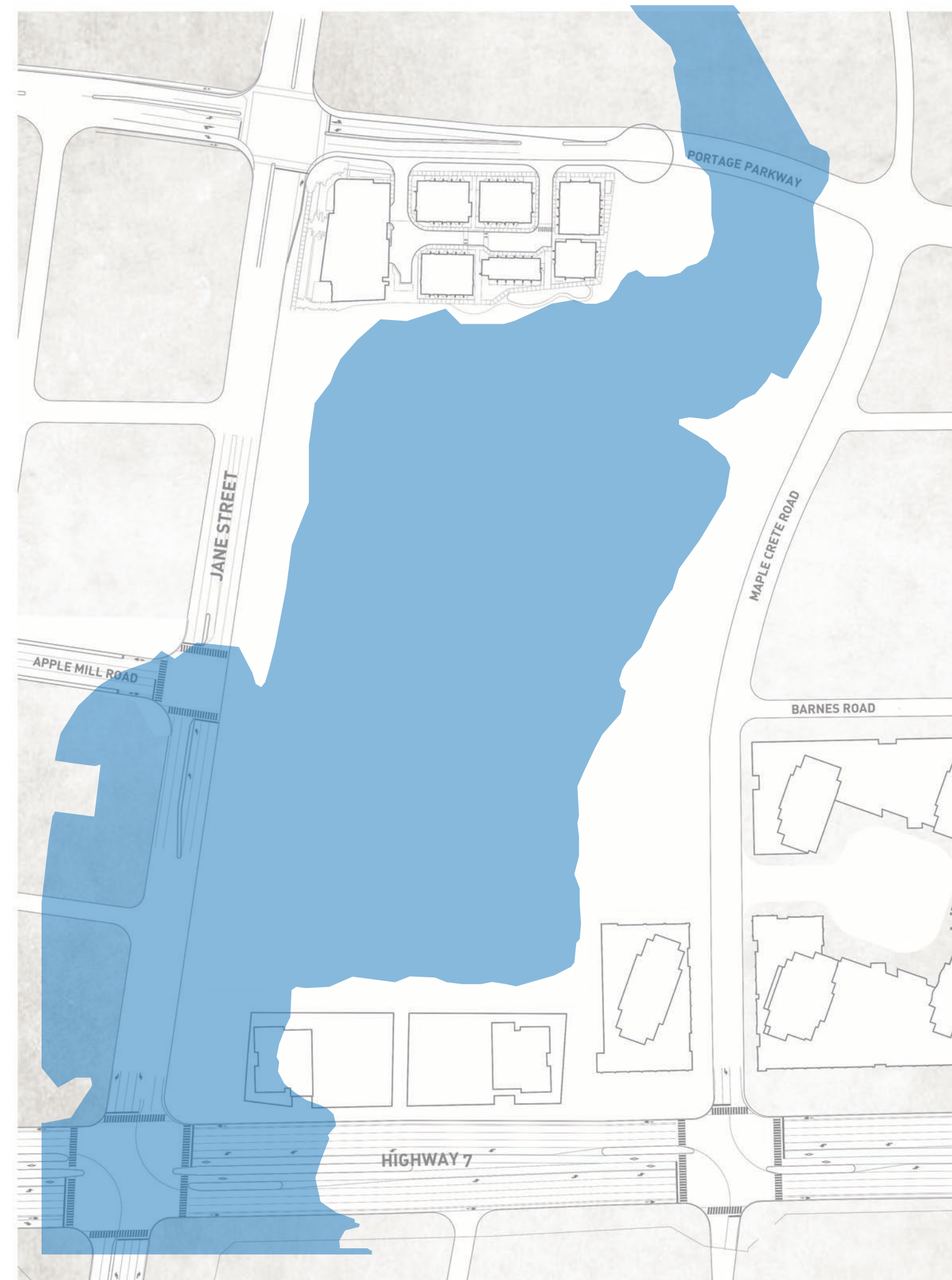
Background

Edgeley Pond and Park, the largest open space and City-owned piece of land in the new Vaughan Metropolitan Centre (VMC), will become an anchor for the VMC and an amenity at the centre of its first neighbourhood.

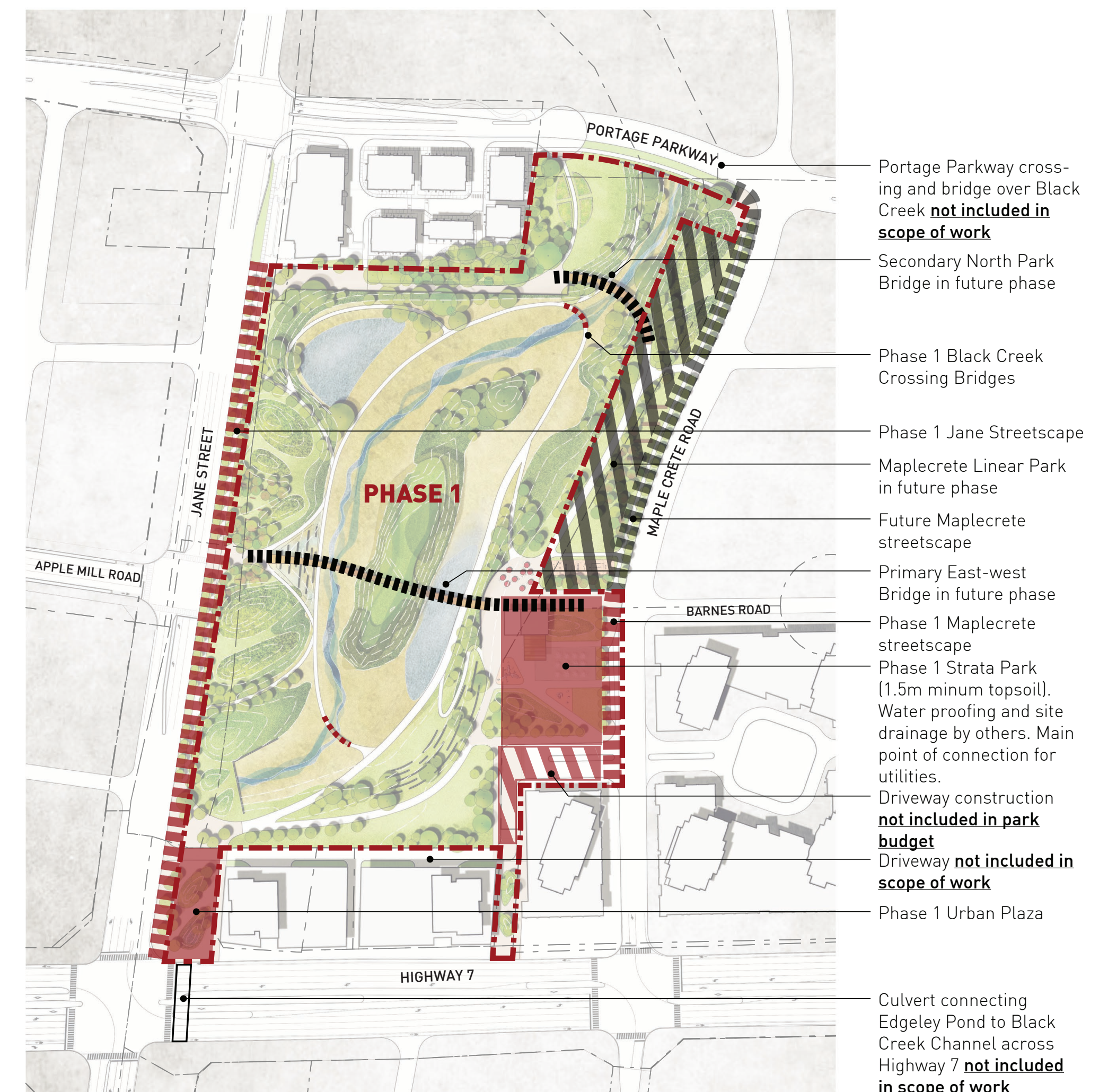
The vision for the redevelopment of Edgeley Pond and Park is to build a signature gateway and sustainable amenity at the centre of the downtown that functions as a hybrid of vital stormwater management (SWM) infrastructure, innovative public park and open space.



Existing On-Site Conditions



Current Limit of Regulatory Flood Plain (Hurricane Hazel, 1954)



Project Phasing Diagram

Public Meeting 1

Review background material and hear your thoughts

Public Meeting 2

Review design concepts and hear your thoughts

Public Meeting 3

Presentation of the final design and hear your thoughts

Concept 1 / Sculpted Landforms



Concept 1 / Park Programming



Focused Plan on Active Use Area

Consistent items included in this concept:

- Accessible pathways / loops
- Adult exercise equipment
- Potential for dog off leash area
- Transitional SWM feature in plaza
- SWM treatment feature
- Two (2) pedestrian bridges
- Flexible open space
- All season washroom + community room
- Senior and junior play space

Unique features in this concept:

- Community gardens
- Integrated amphitheater
- Two (2) open water bodies
- Integrated shade structure with washroom + community room facility
- Skating rink combined with splash pad
- Flexible lawn area at south edge

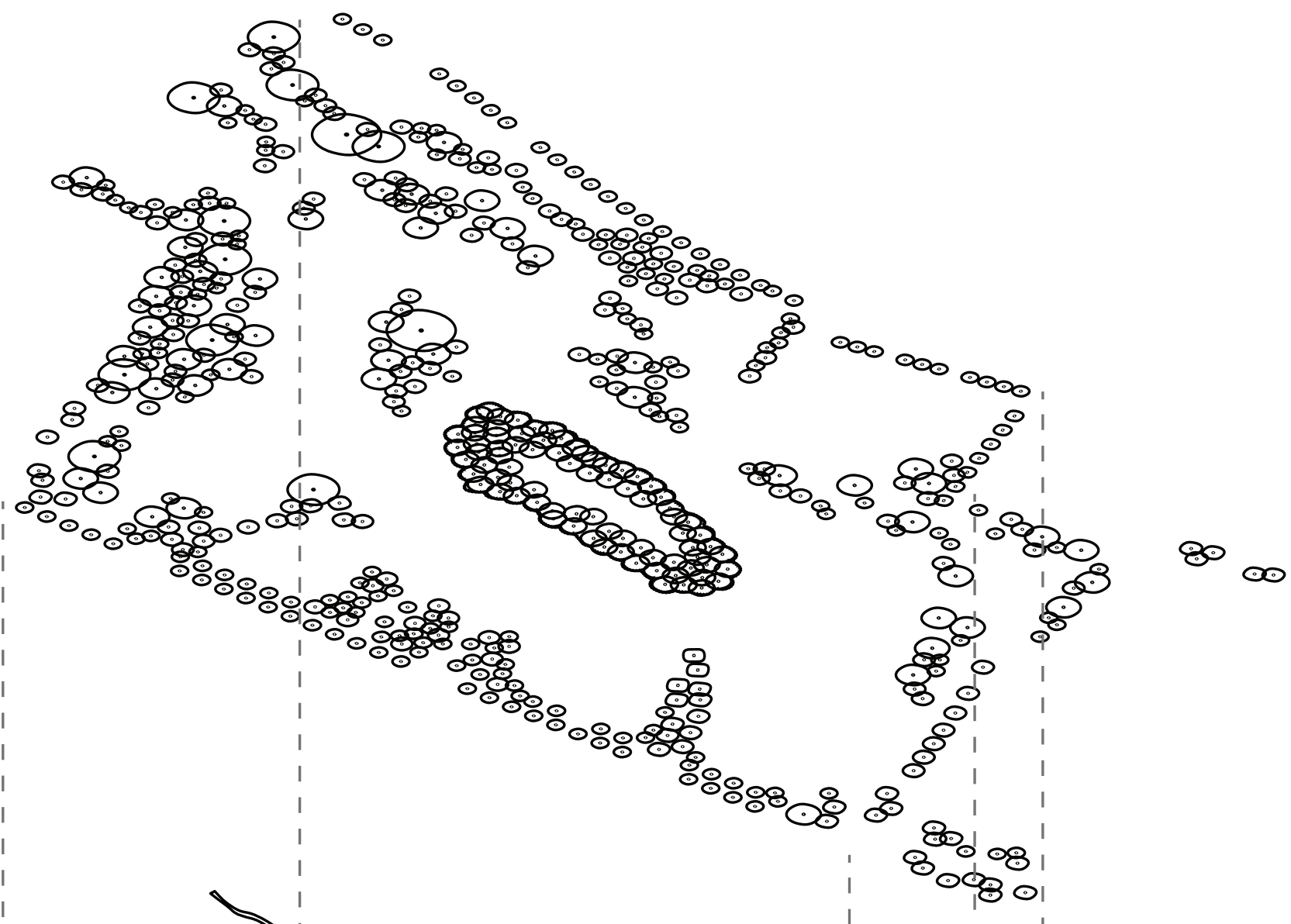


Artistic Perspective

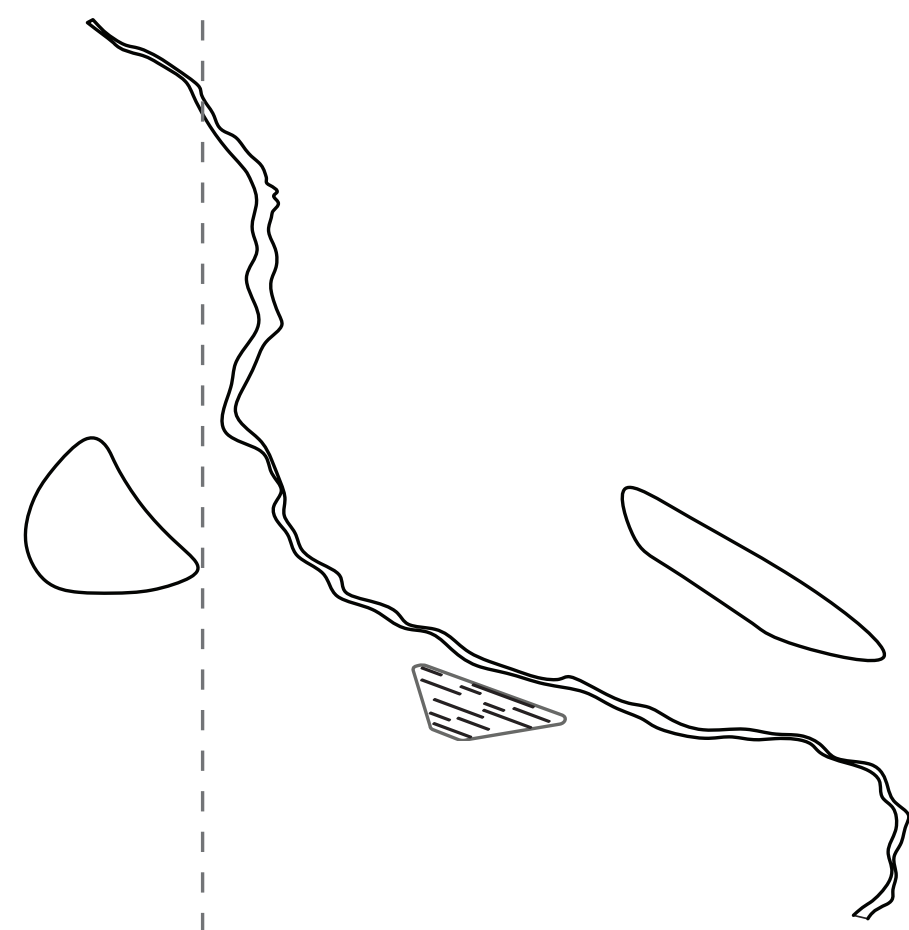
Concept 1 / Site Organization

Concept 1 / 50 Year Storm Event

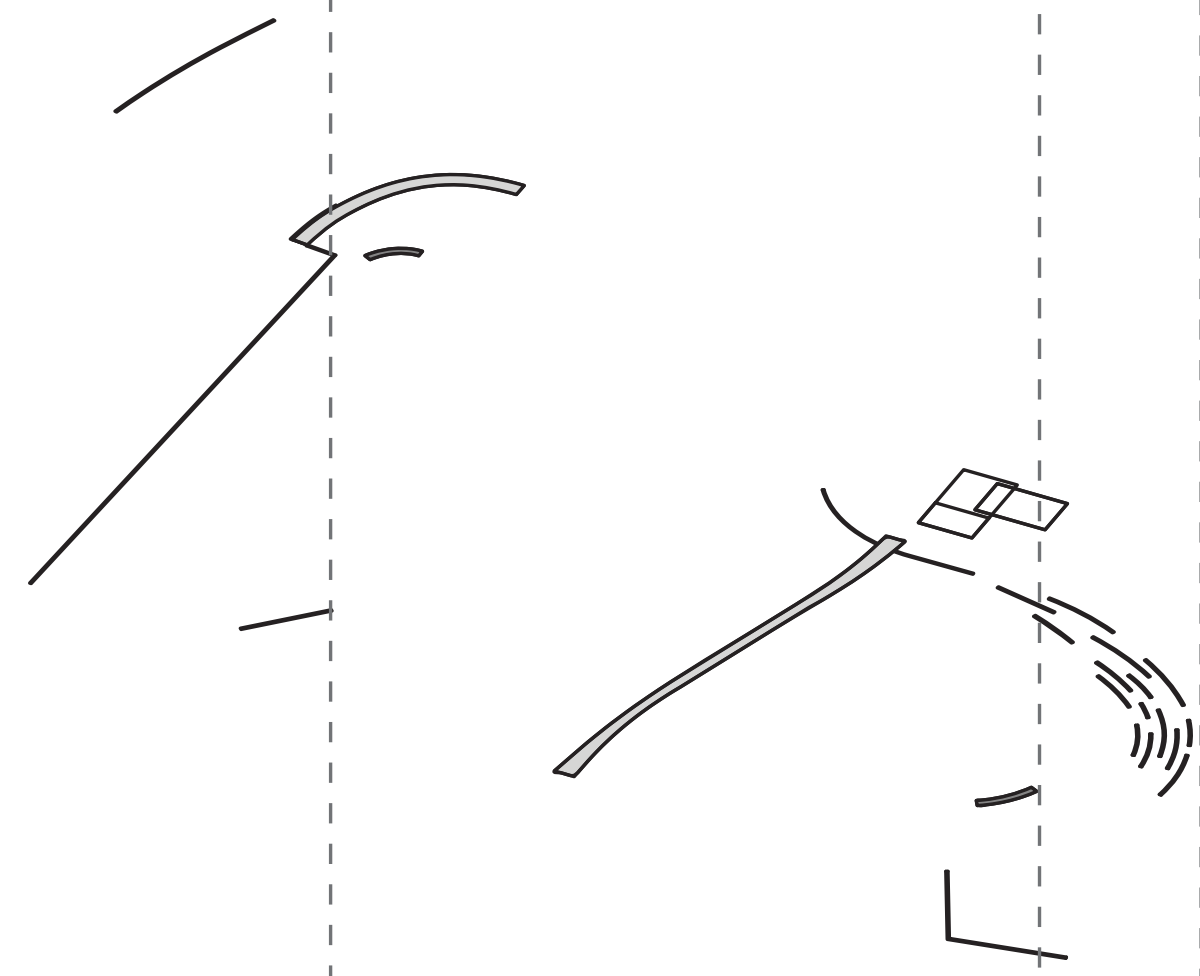
Planting Strategy



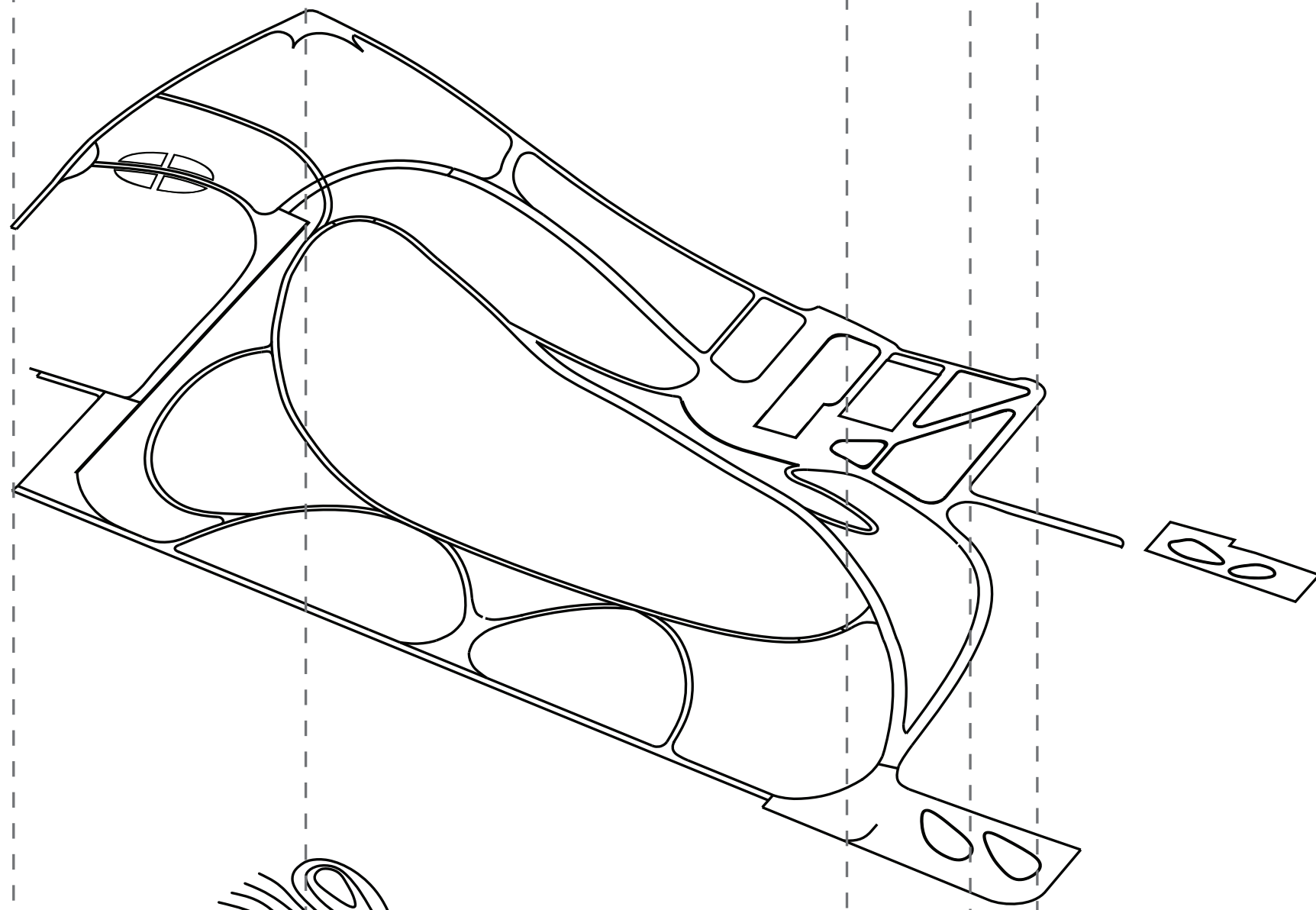
Ponds +
Waterscapes



Bridges,
Structures,
Walls + Ramps



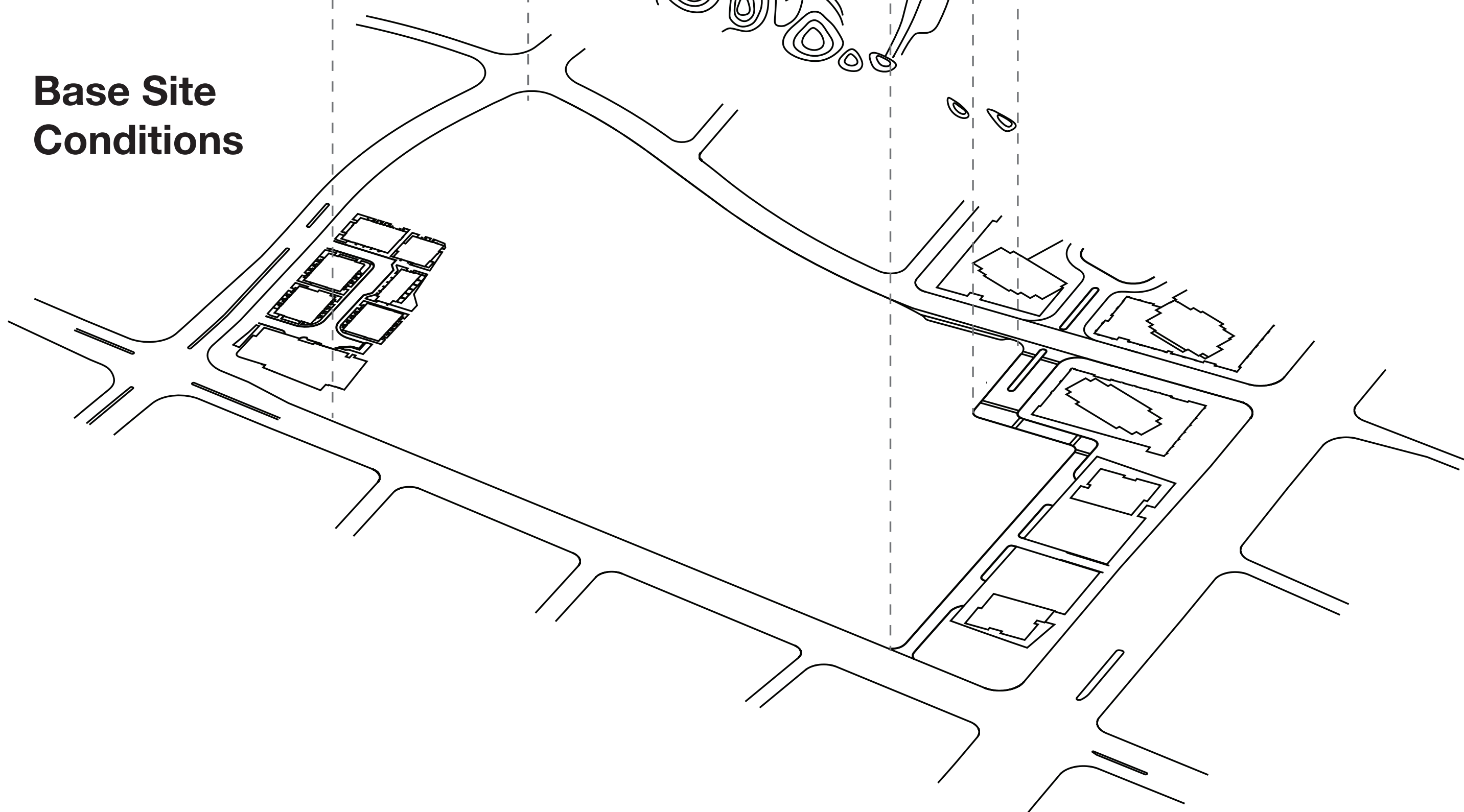
Network of
Pathways



Sculpted
Topography



Base Site
Conditions



Conceptual Representation of 1/3 of Peak Volume



Conceptual Representation of 2/3 of Peak Volume

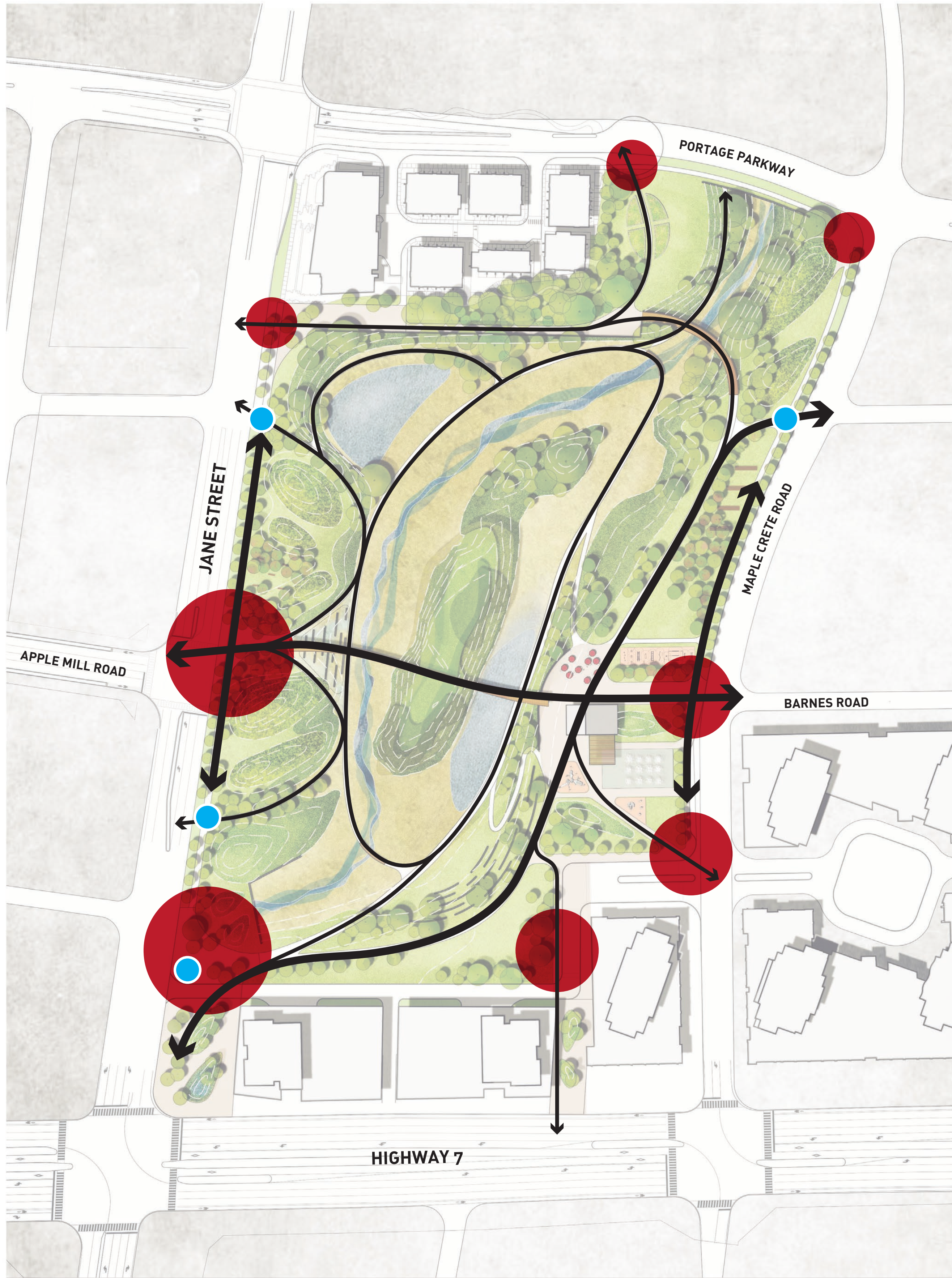


Conceptual Representation of Peak Volume

Concept 1 / Shadow Impacts



Concept 1 / Site Circulation



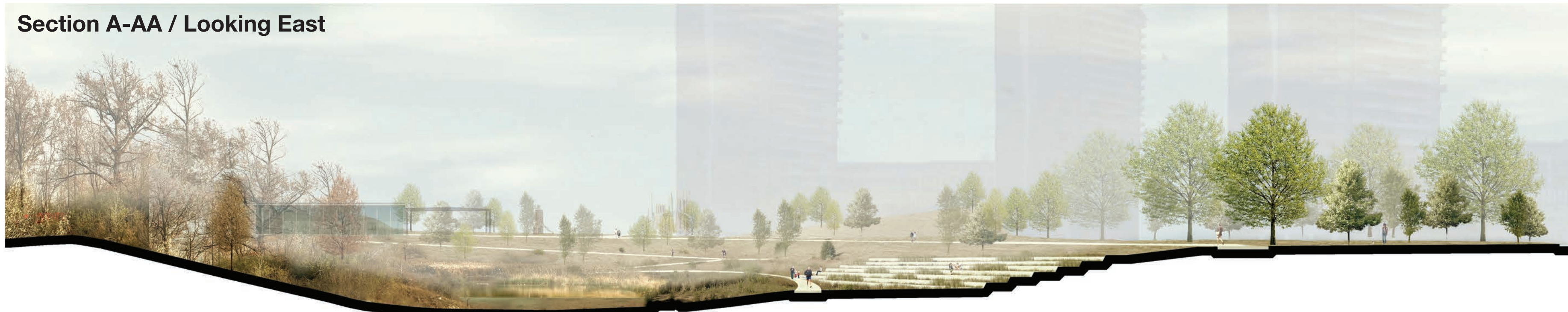
Pedestrian / Cycling Circulation System, Gateways and Secondary Points of Entry



Circuit Loops

Concept 1 / Cross Sections

Section A-AA / Looking East



Existing Forested Island Open Water Body Amphitheater
Terraced Integrated Steps Flexible Lawn Open Space

Section B-BB / Looking South



Flexible Lawn Open Space Black Creek and Valley with
Overhead Secondary North Bridge Lookout Plaza Flexible Lawn Open Space

Section C-CC / Looking North



Flexible Mounded Lawn Open Space Black Creek and Valley with
Overhead Primary East-West Bridge Existing Forested Island Open Water Body Amphitheater
Terraced Integrated Steps Strata Park, Active Play Area



Cross Section Key Plan

Concept 2 / Terraced Landforms



Concept 2 / Park Programming



Focused Plan on Active Use Area

Consistent items included in this concept:

- Accessible pathways / loops
- Adult exercise equipment
- Potential for dog off leash area
- Transitional SWM feature in plaza
- SWM treatment feature
- Flexible open space
- All season washroom + community room
- Senior and junior play space

Unique features in this concept:

- Integrated amphitheater seats / steps
- One (1) main open water body
- Two (2) integrated SWM treatment features
- Three (3) pedestrian bridges
- Independent shade structure
- Skating rink combined with splash pad
- Flexible lawn area at southern edge

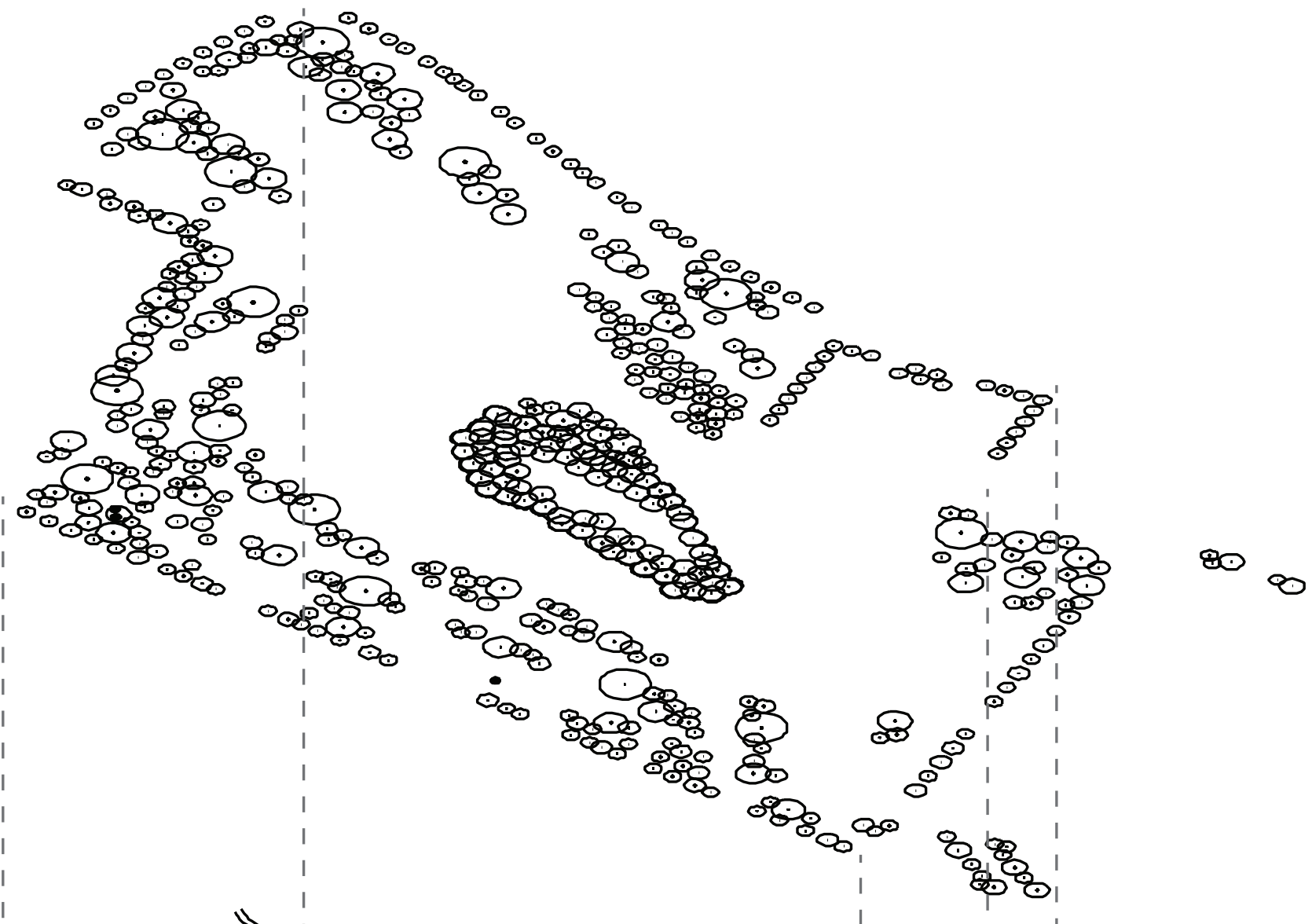


Artistic Perspective

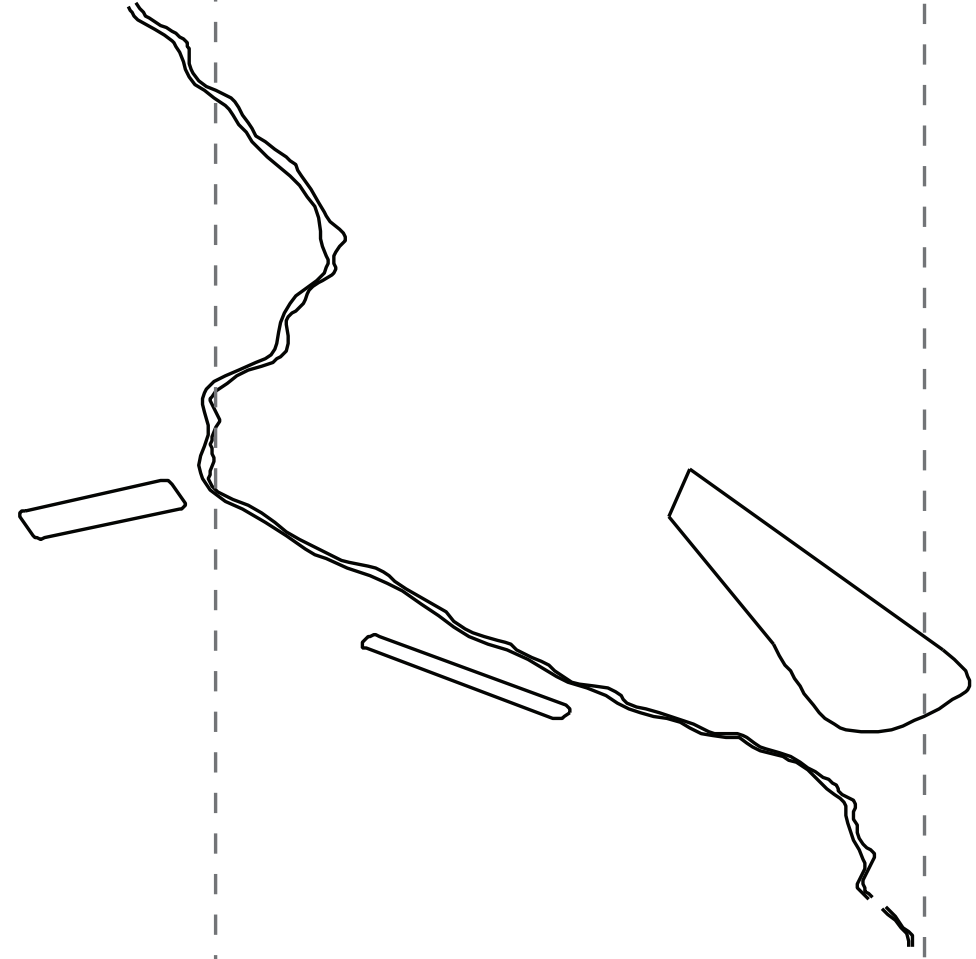
Concept 2 / Site Organization

Concept 2 / 50 Year Storm Event

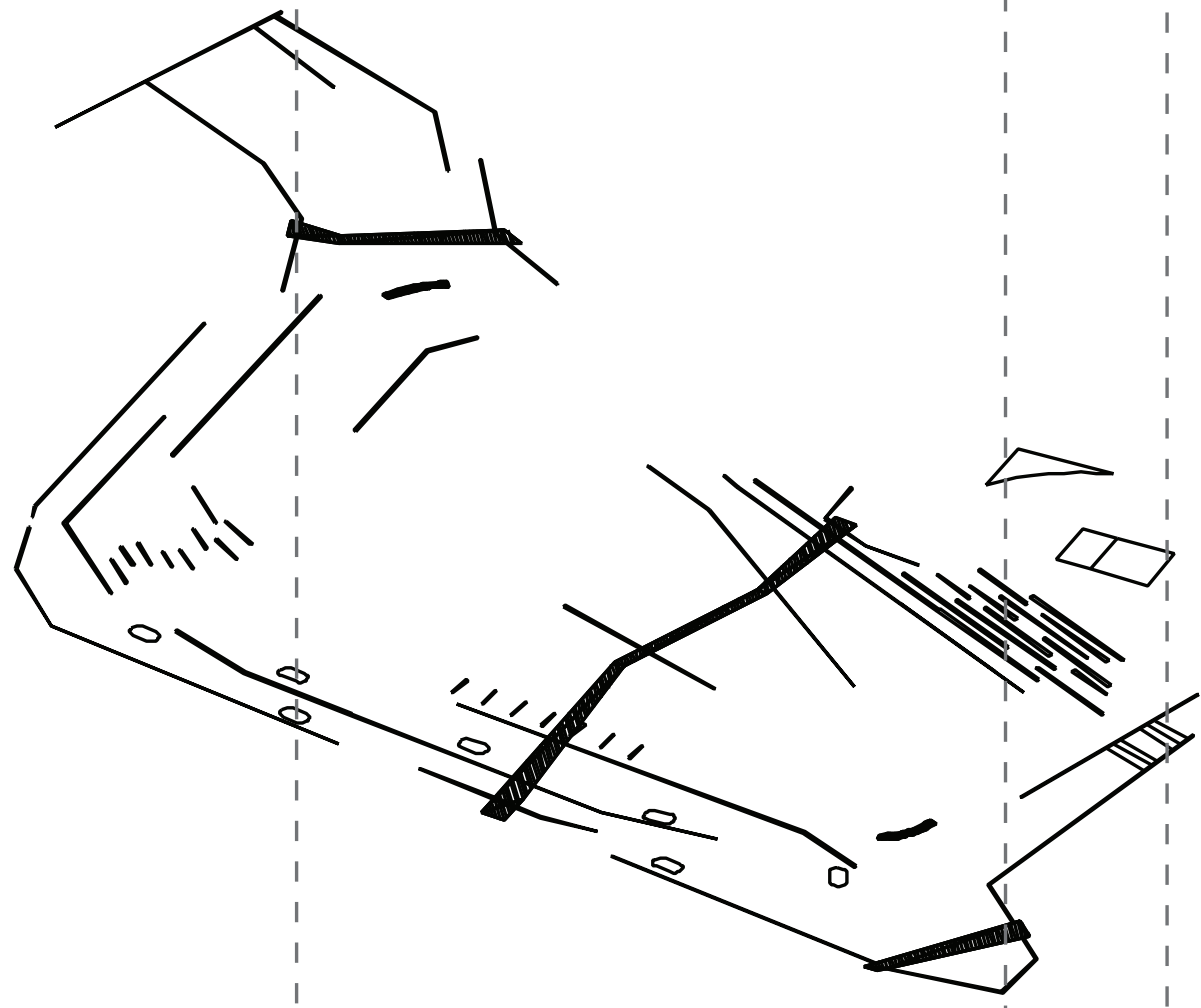
Planting Strategy



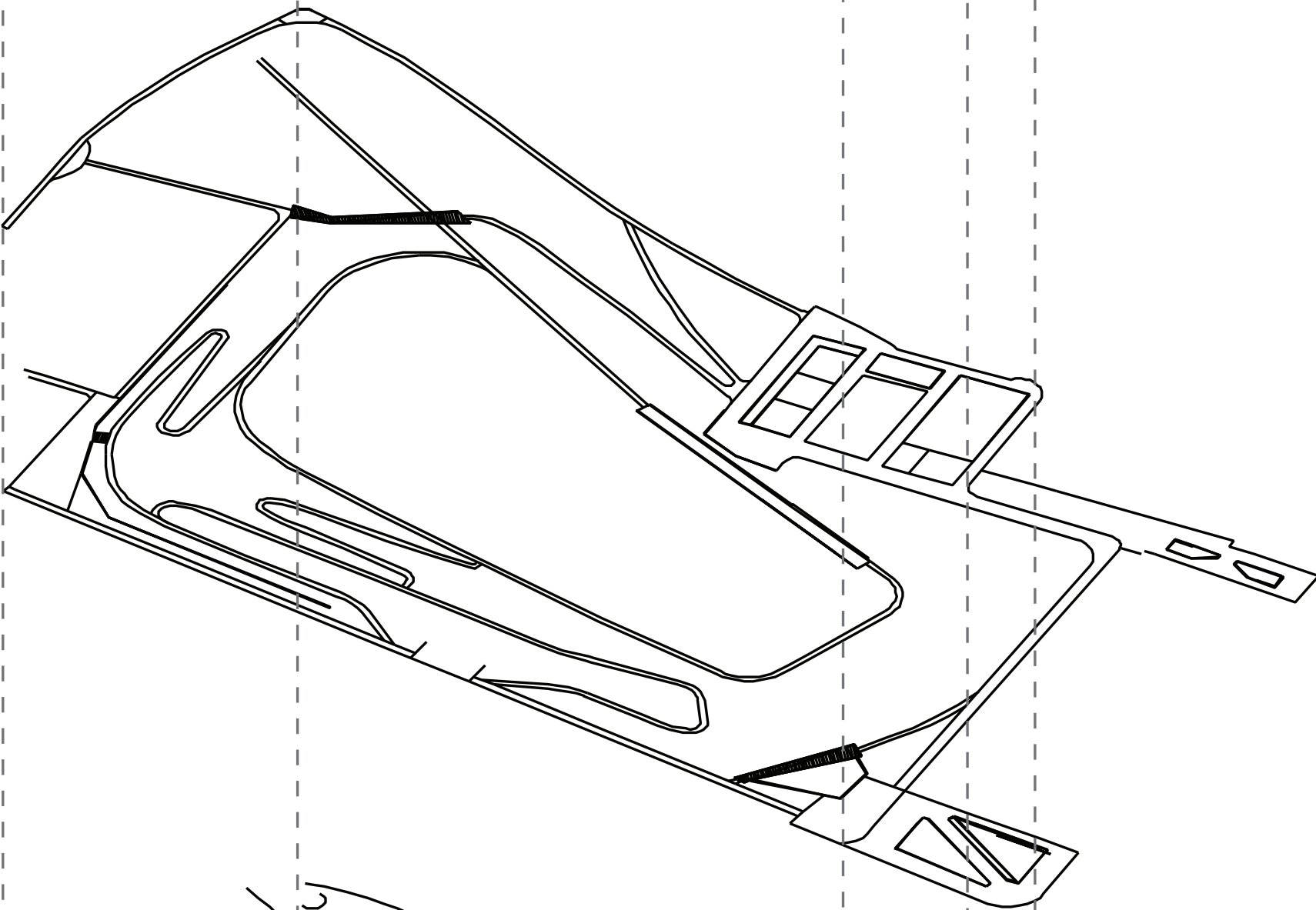
Pond +
Waterscapes



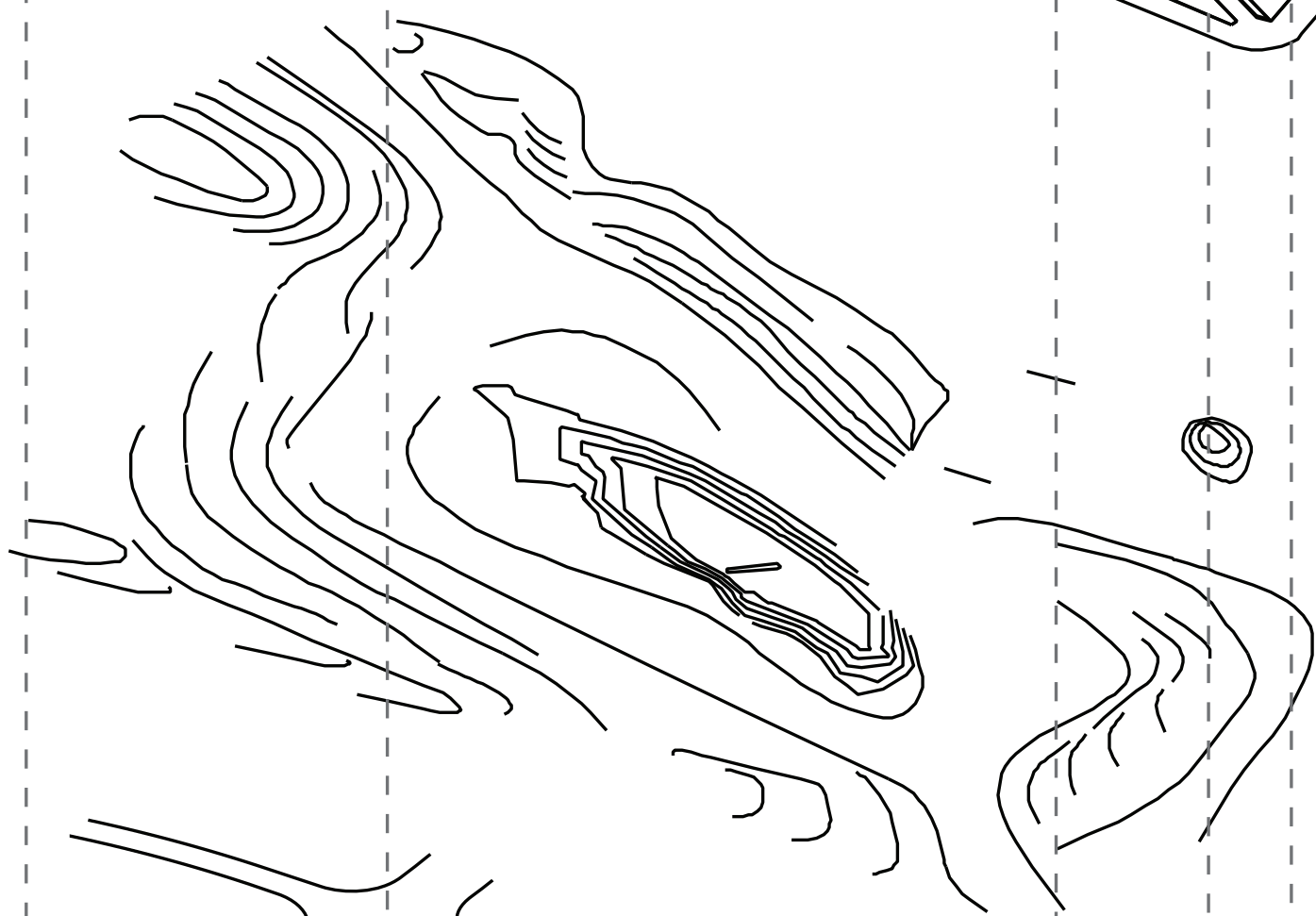
Bridges,
Structures,
Walls + Ramps



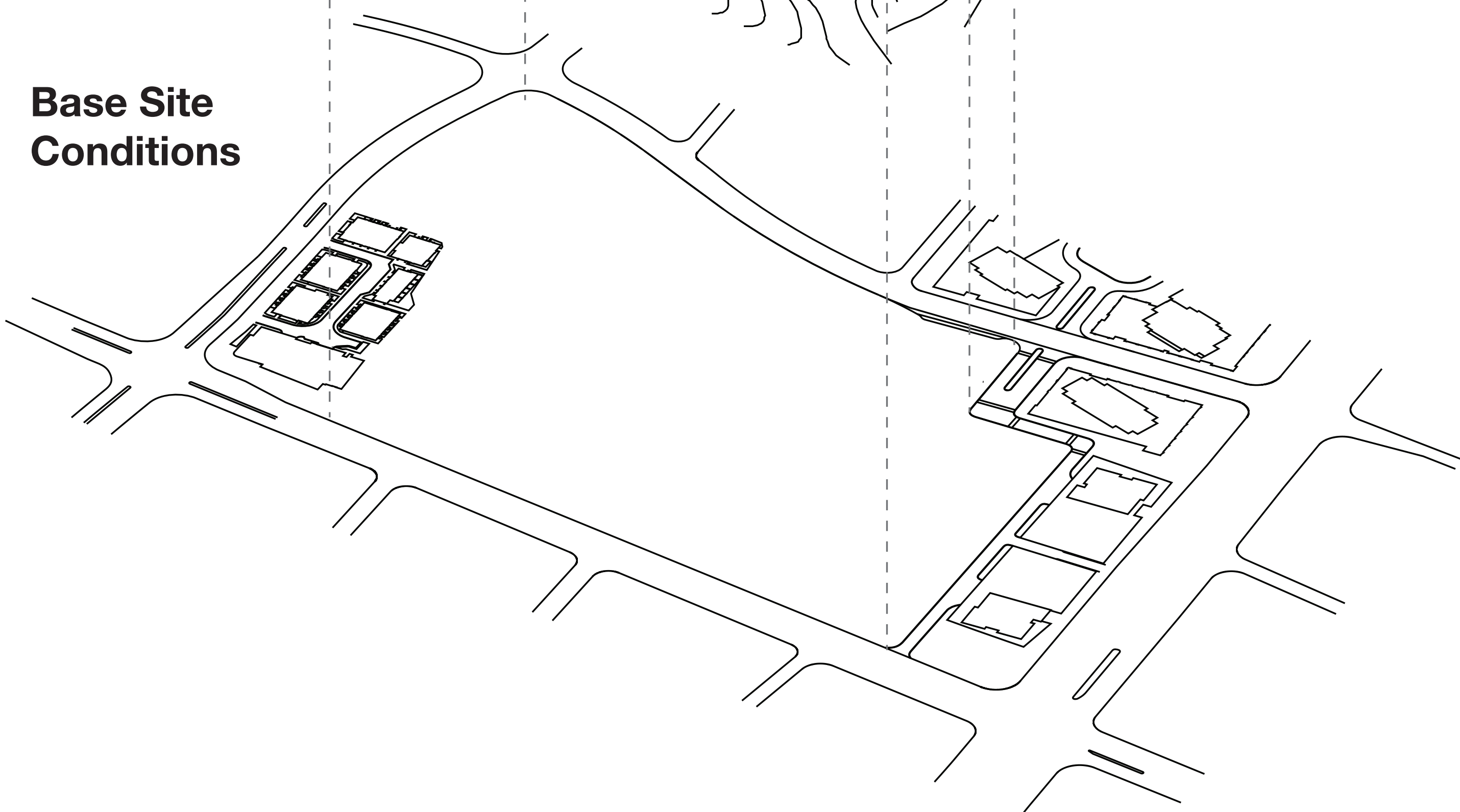
Network of
Pathways



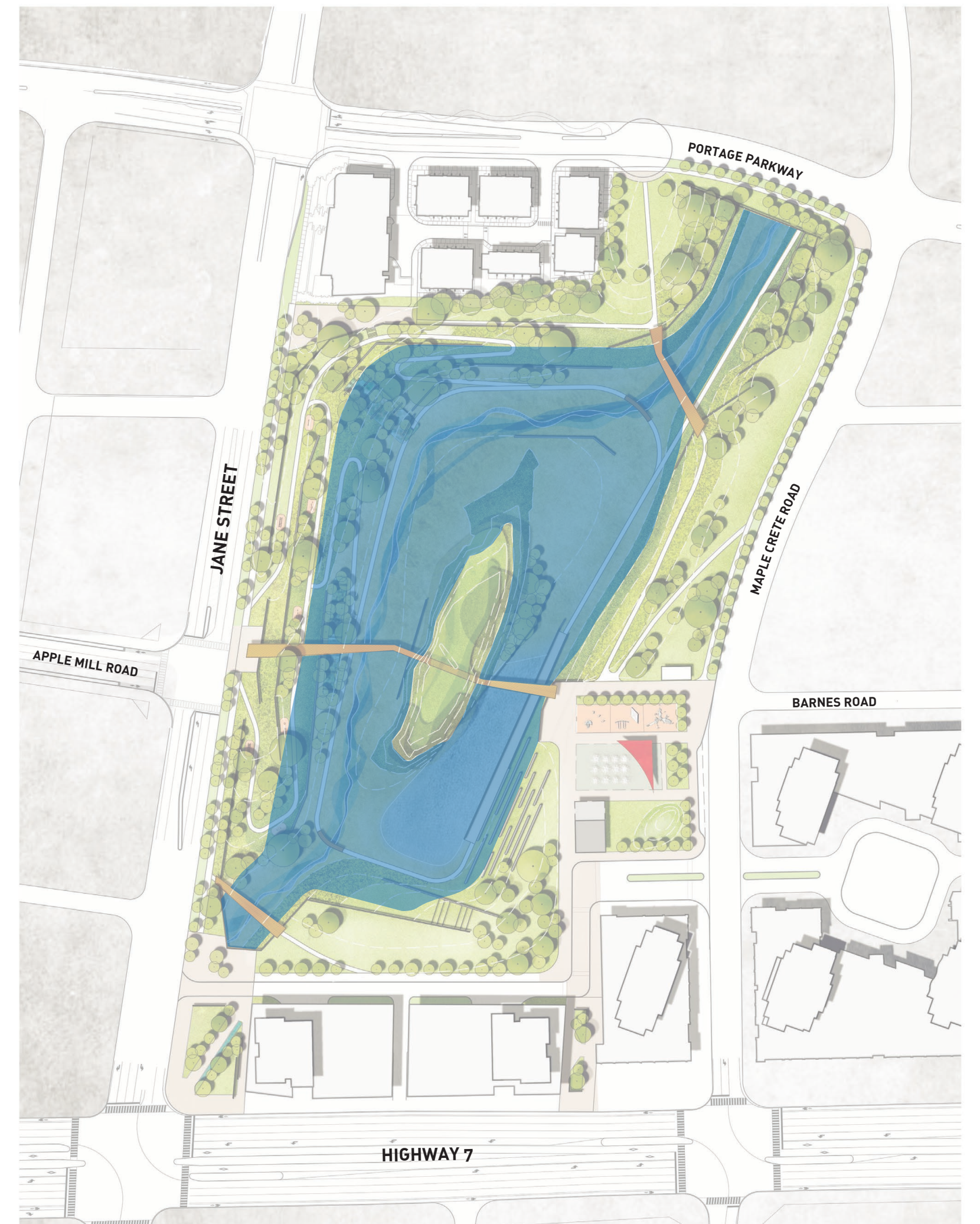
Terraced
Topography



Base Site
Conditions



Conceptual Representation of 1/3 of Peak Volume



Conceptual Representation of 2/3 of Peak Volume

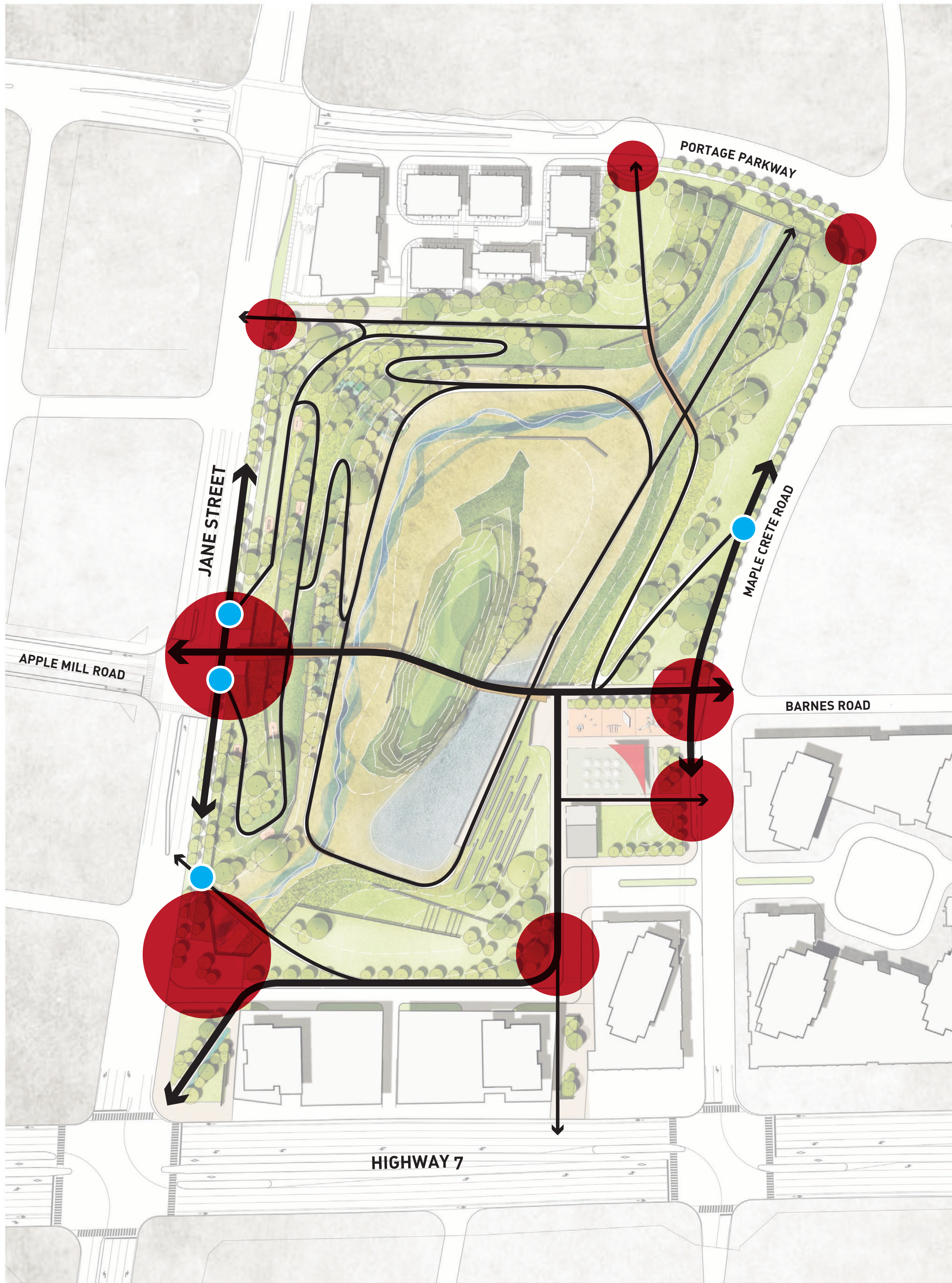


Conceptual Representation of Peak Volume

Concept 2 / Shadow Impacts



Concept 2 / Site Circulation



Pedestrian / Cycling Circulation System, Gateways and Secondary Points of Entry



Circuit Loops

Concept 2 / Cross Sections

Section A-AA / Looking East



Existing Forested Island Open Water Body Amphitheater Terraced Integrated Steps Retaining Wall + Terraced Stairs Flexible Lawn Open Space

Section B-BB / Looking South



Flexible Lawn Open Space Black Creek and Valley with Overhead Secondary North Bridge Lookout Plaza Flexible Lawn Open Space

Section C-CC / Looking North



Terraced Open Space + Adult Exercise Equipment Black Creek and Valley with Overhead Primary East-West Bridge Existing Forested Island Open Water Body Retaining Walls Strata Park, Active Play Area



Cross Section Key Plan

Concept 3 / Basins + Ecologies



Concept 3 / Park Programming



Focused Plan on Active Use Area

Consistent items included in this concept:

- Accessible pathways / loops
- Adult exercise equipment
- Potential for dog off leash area
- Transitional SWM feature in plaza
- SWM treatment feature
- Two (2) pedestrian bridges
- Flexible open space
- All season washroom + community room
- Senior and junior play space

Unique features in this concept:

- Community gardens
- Two (2) open water bodies
- Additional minor pedestrian bridge in valley
- Splash pad
- Skating loop

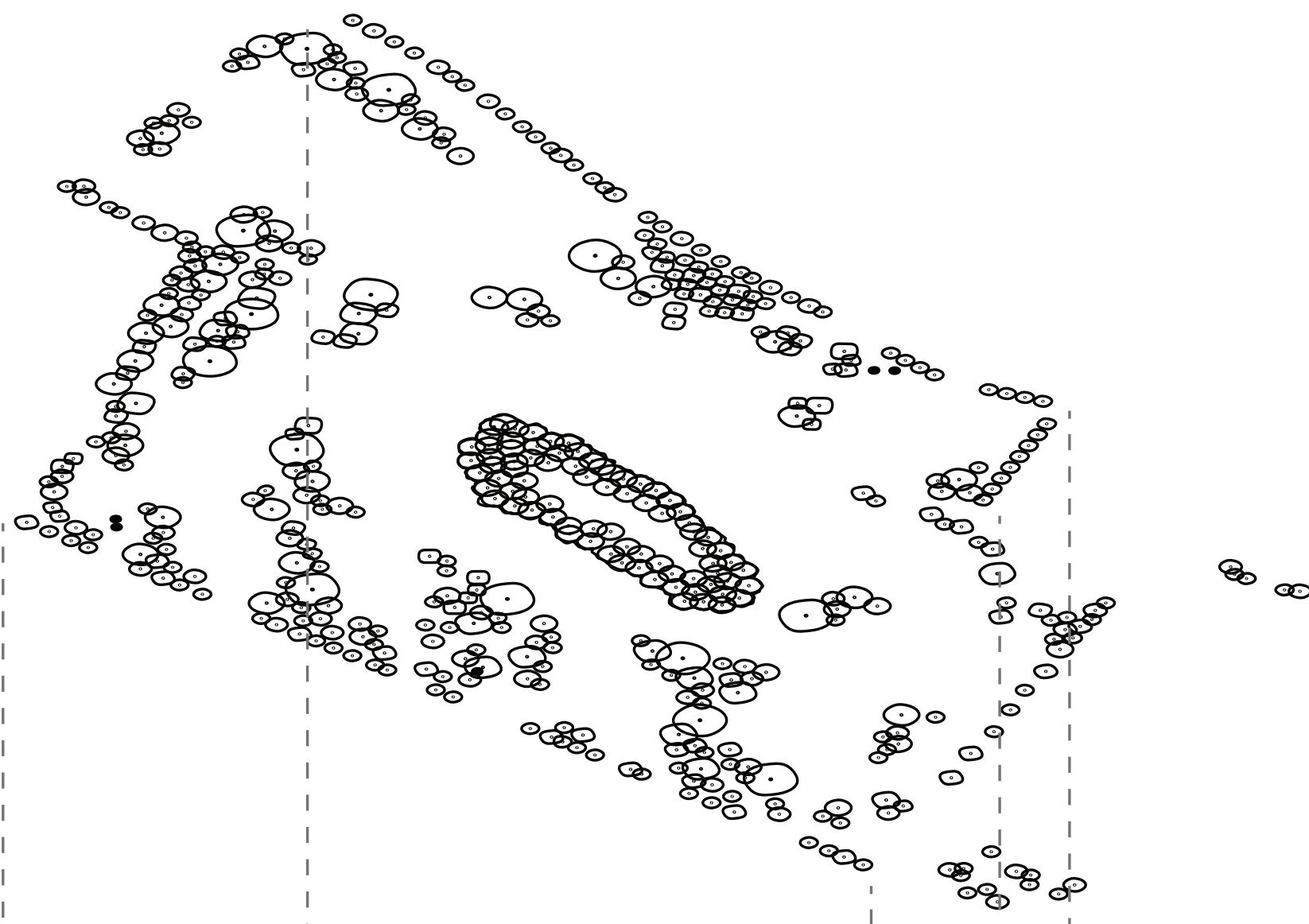


Artistic Perspective

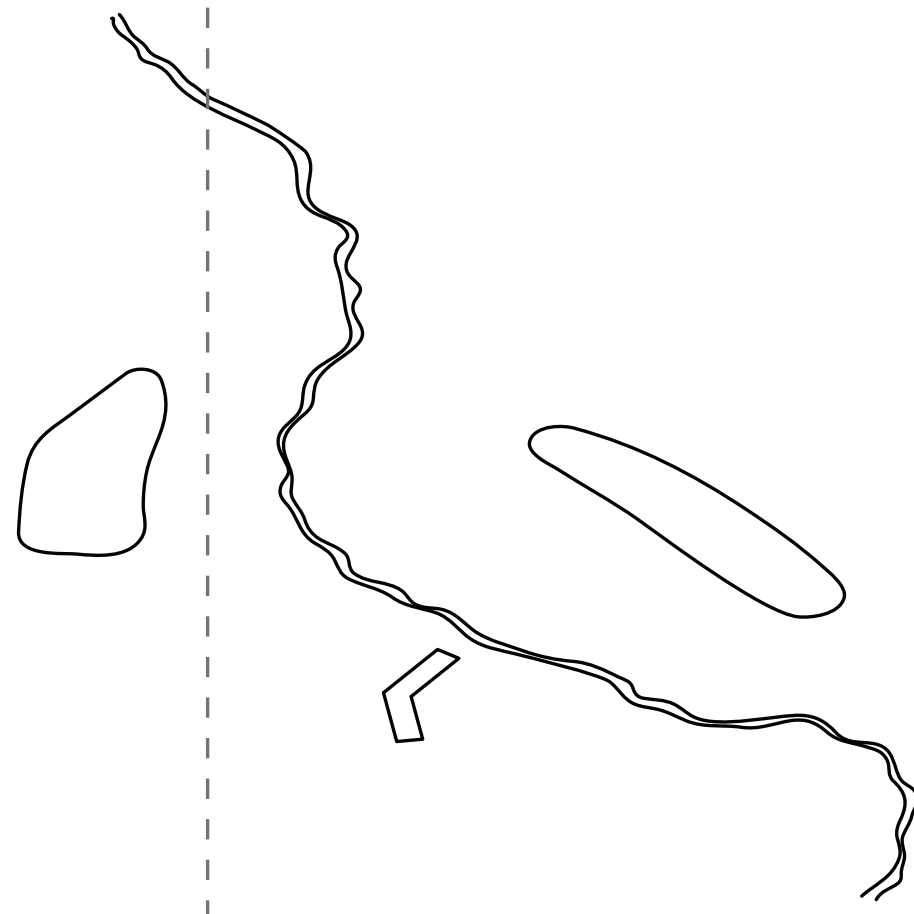
Concept 3 / Site Organization

Concept 3 / 50 Year Storm Event

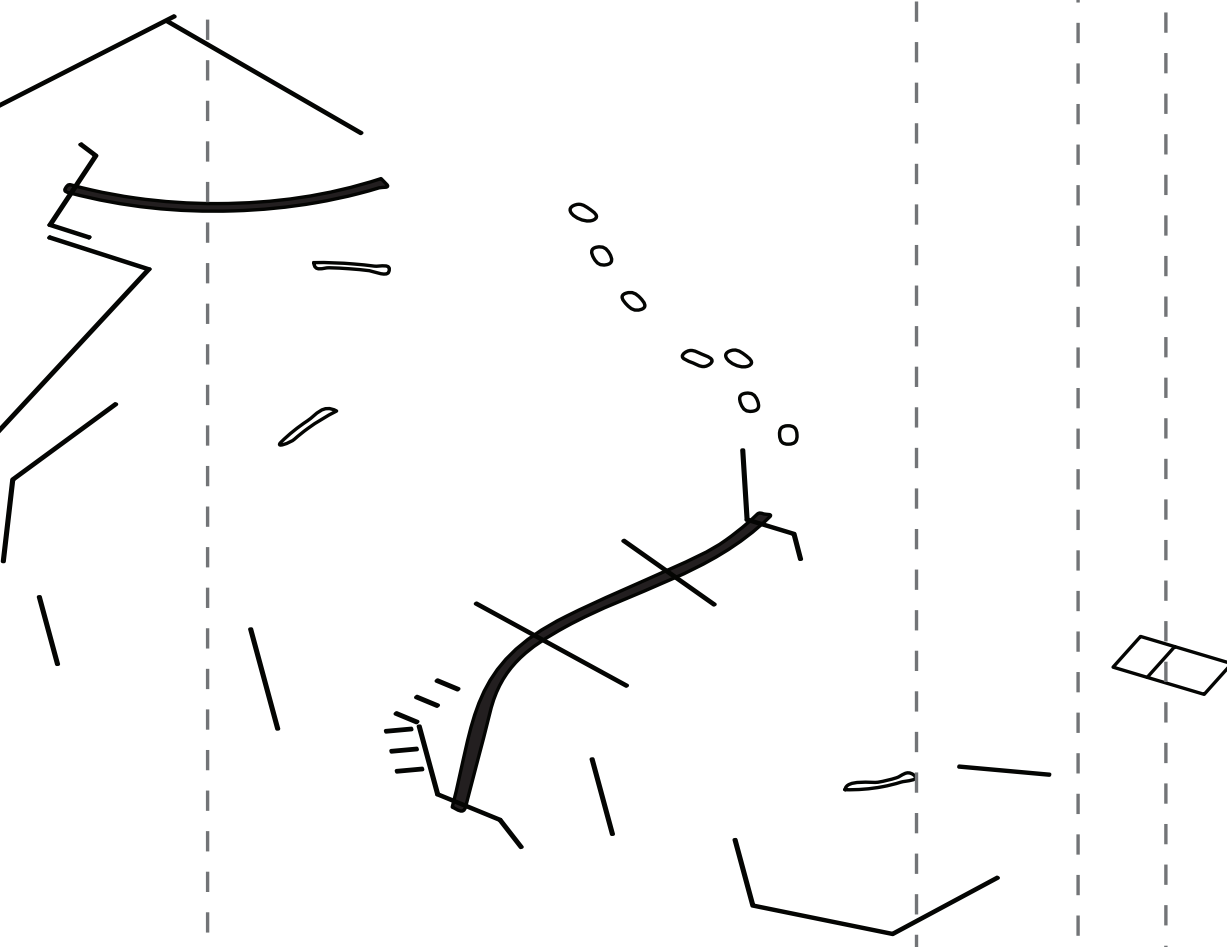
Planting Strategy



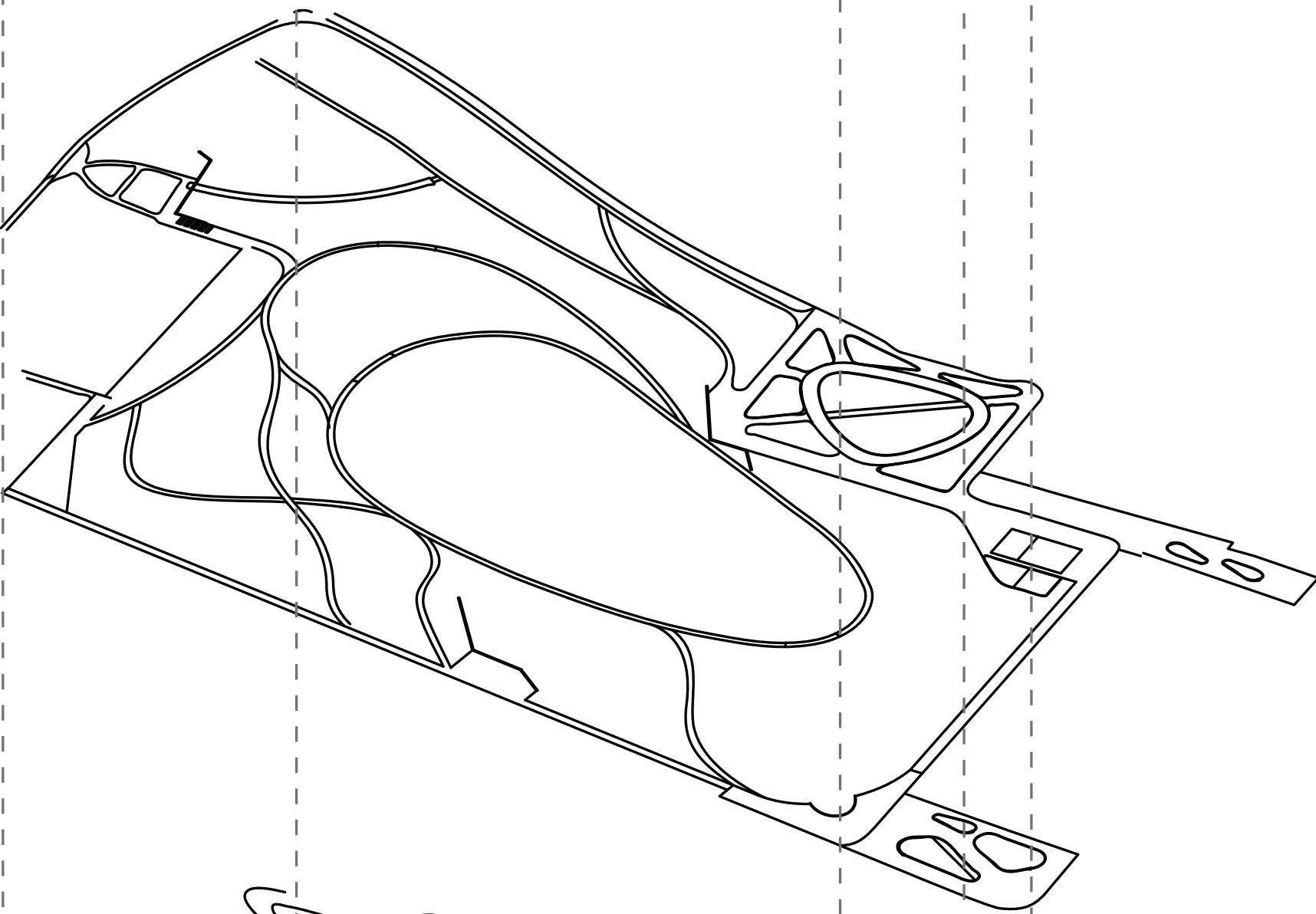
Ponds +
Waterscapes



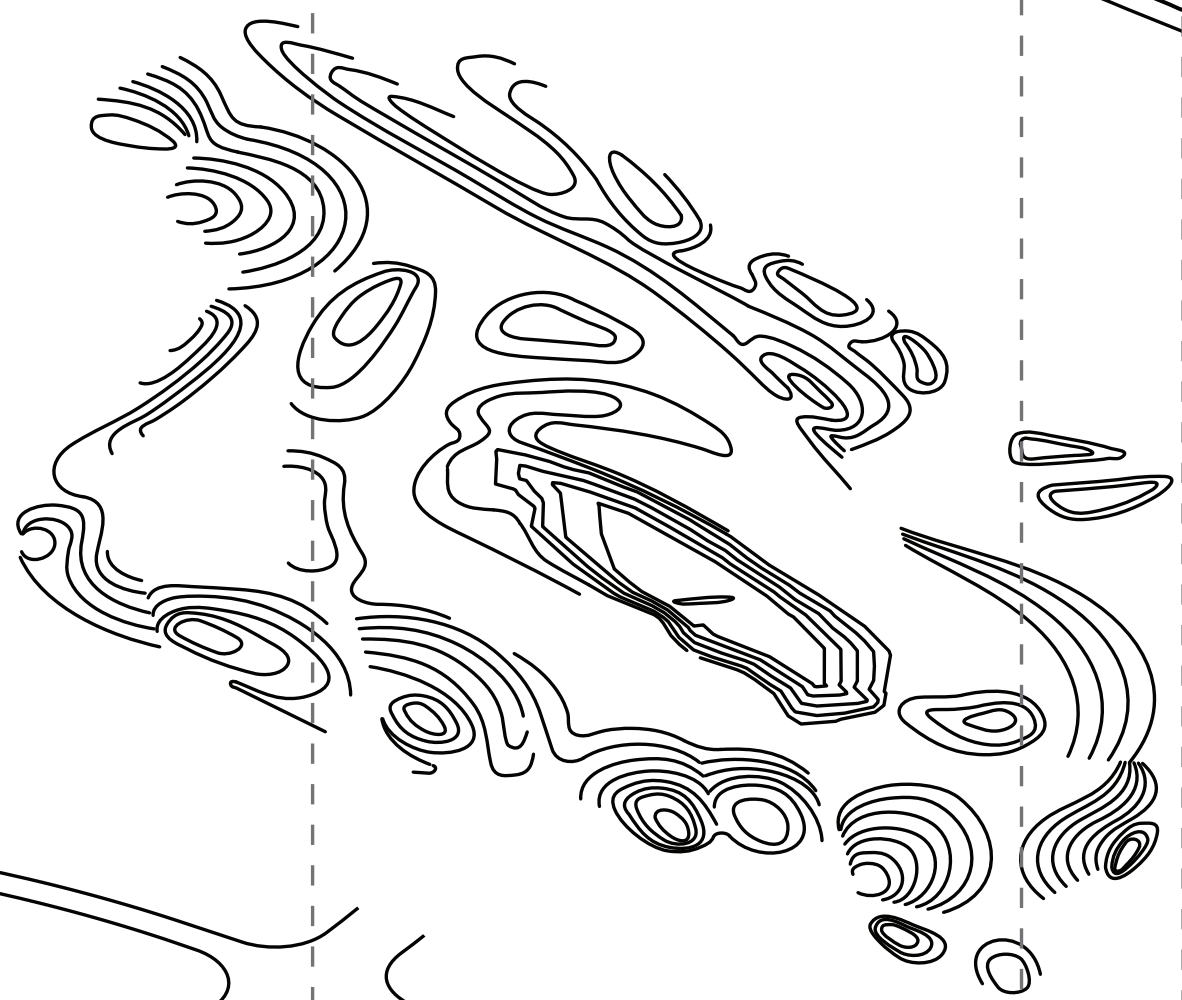
Bridges,
Structures,
+ Walls



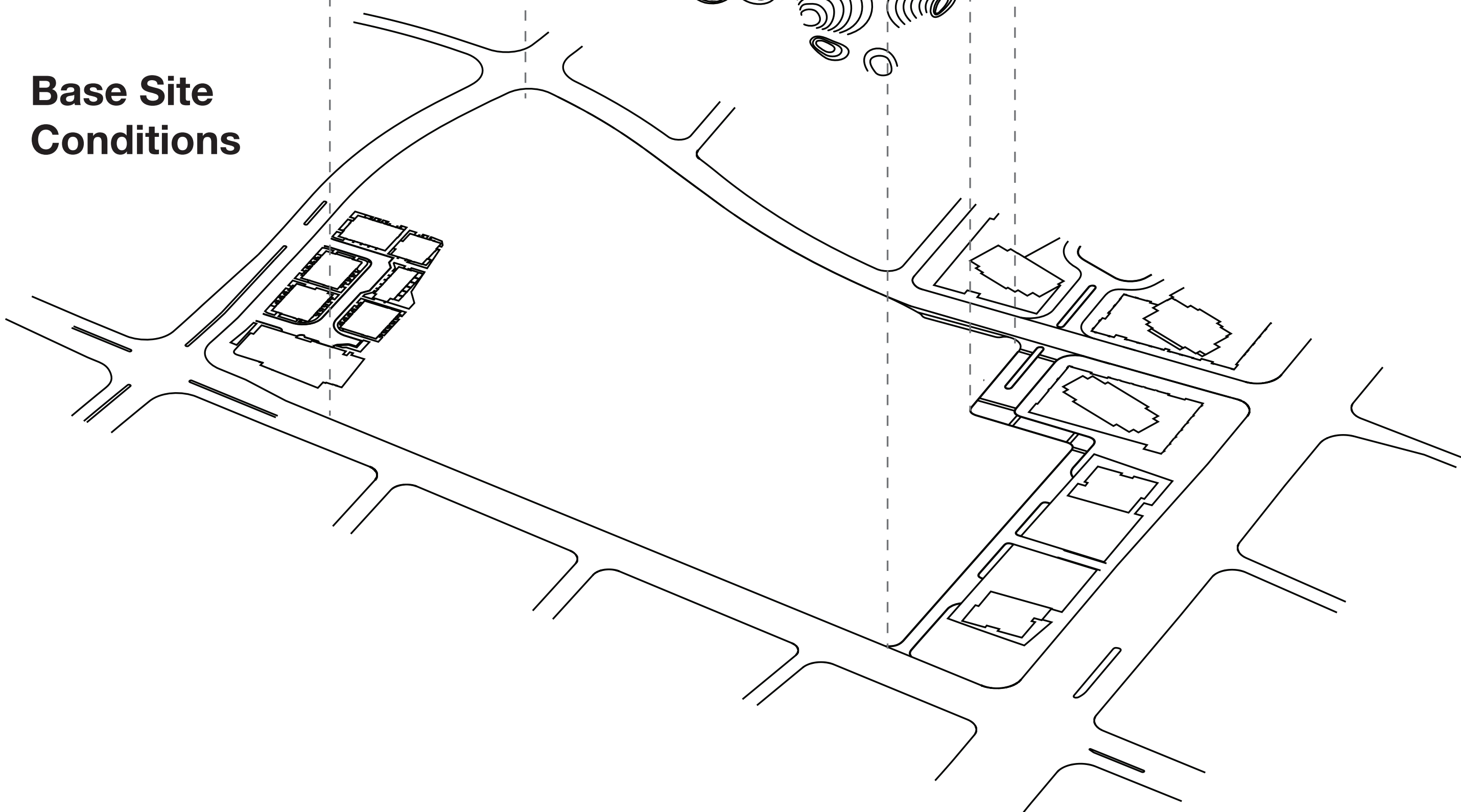
Network of
Pathways



Sculpted
Topography



Base Site
Conditions



Conceptual Representation of 1/3 of Peak Volume



Conceptual Representation of 2/3 of Peak Volume

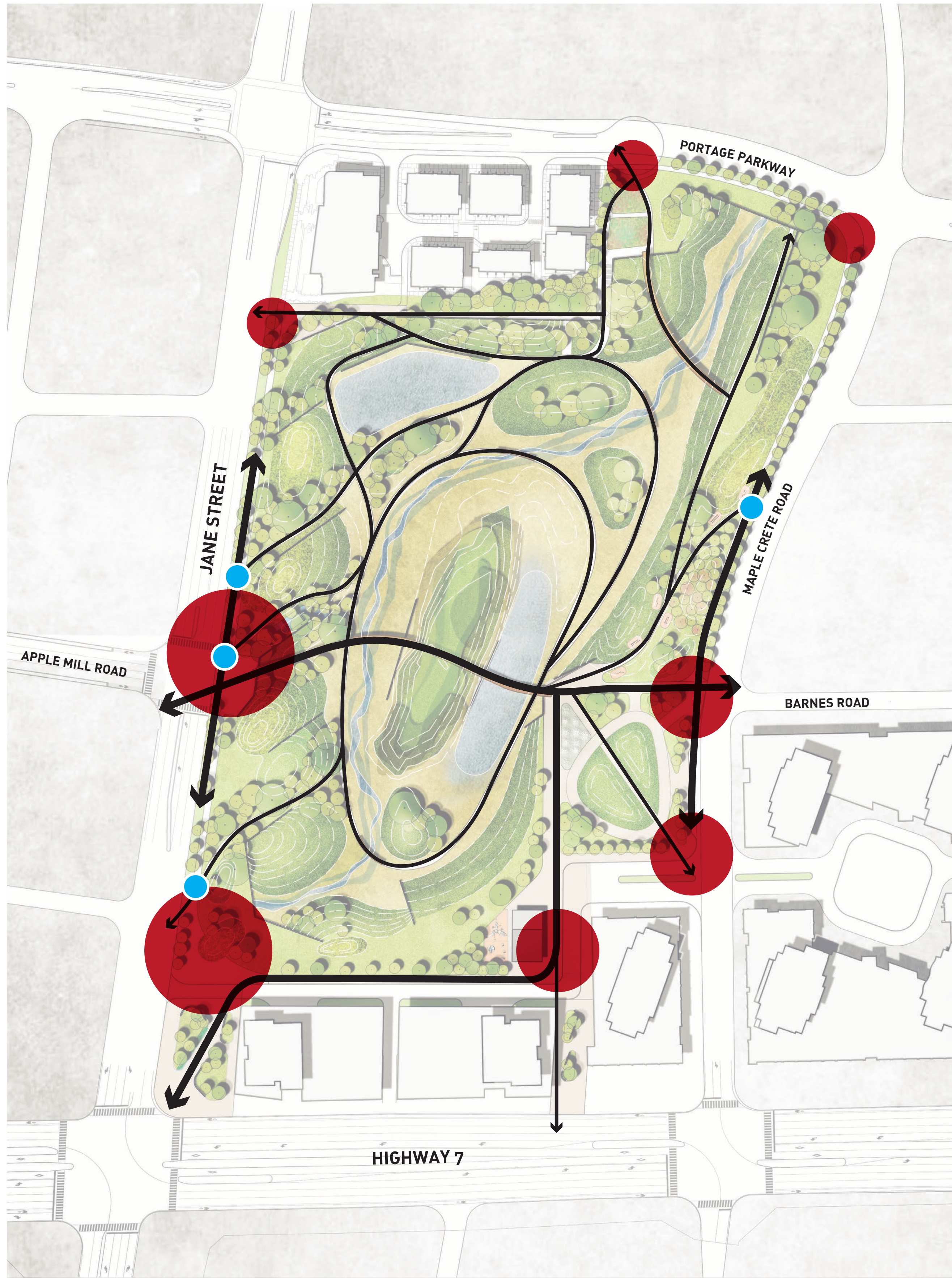


Conceptual Representation of Peak Volume

Concept 3 / Shadow Impacts



Concept 3 / Site Circulation



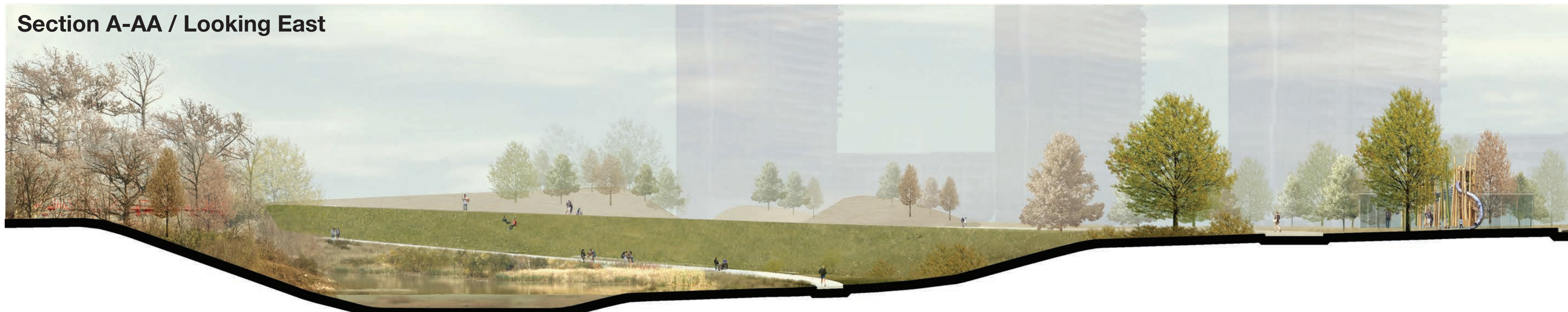
Pedestrian / Cycling Circulation System, Gateways and Secondary Points of Entry



Circuit Loops

Concept 3 / Cross Section

Section A-AA / Looking East



Existing Forested Island Open Water Body Sloping Flexible Open Space Flexible Lawn Open Space

Section B-BB / Looking South



Flexible Lawn Open Space Black Creek and Valley with Overhead Secondary North Bridge Community Garden Plots

Section C-CC / Looking North



Flexible Mounded Lawn Open Space Black Creek and Valley with Overhead Primary East-West Bridge and Walking Trails Existing Forested Island Open Water Body Water's Edge Trail Strata Park, Active Play Area



Cross Section Key Plan