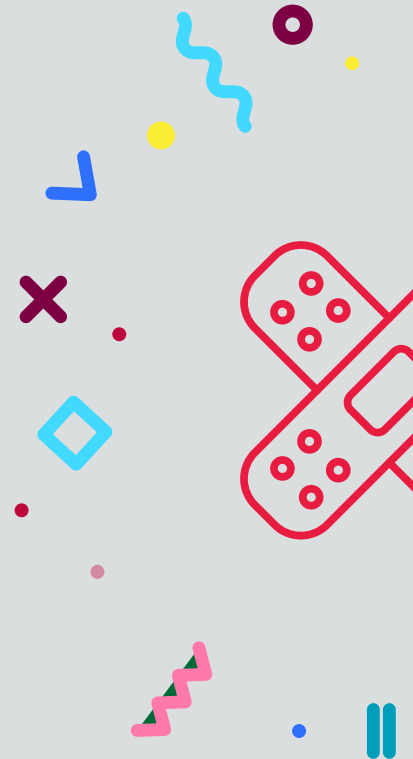
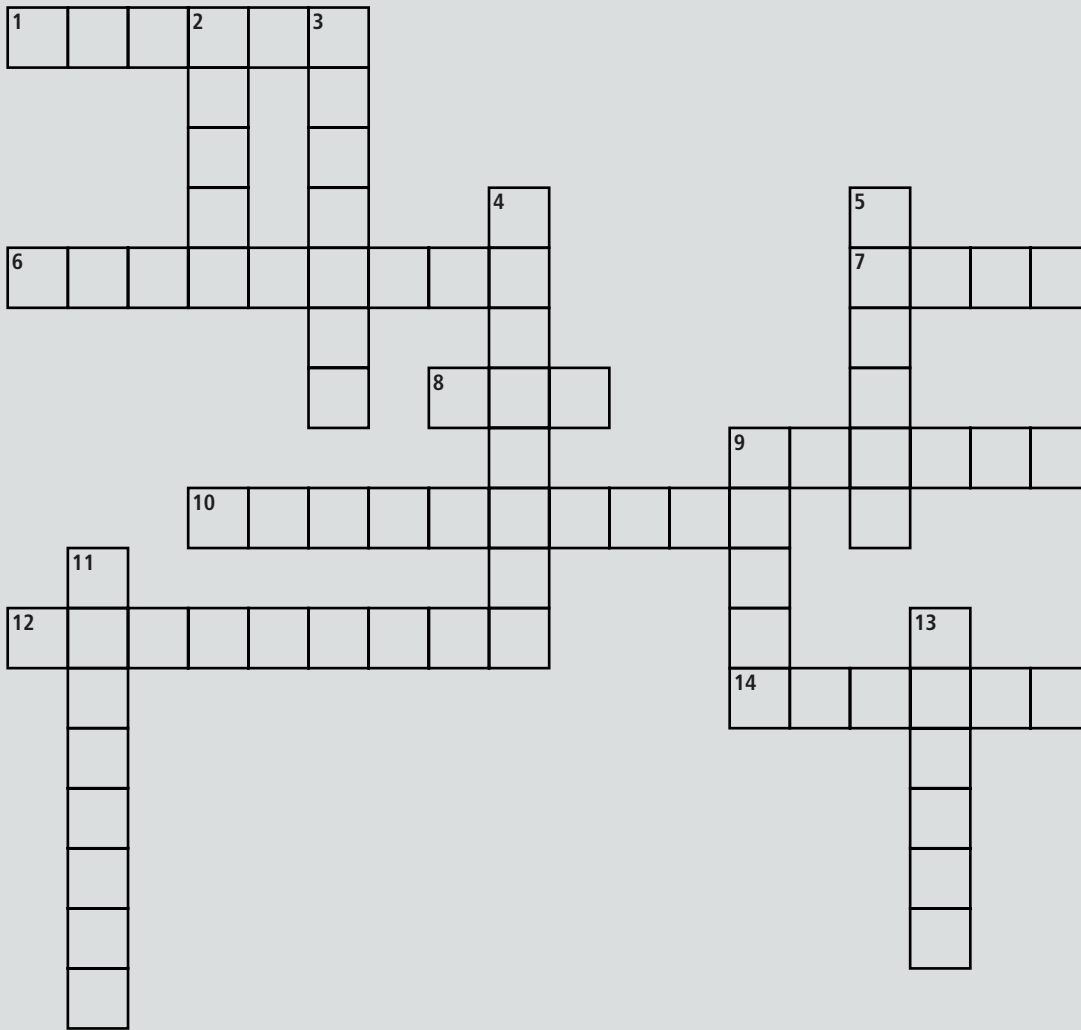


First Aid Crossword #1



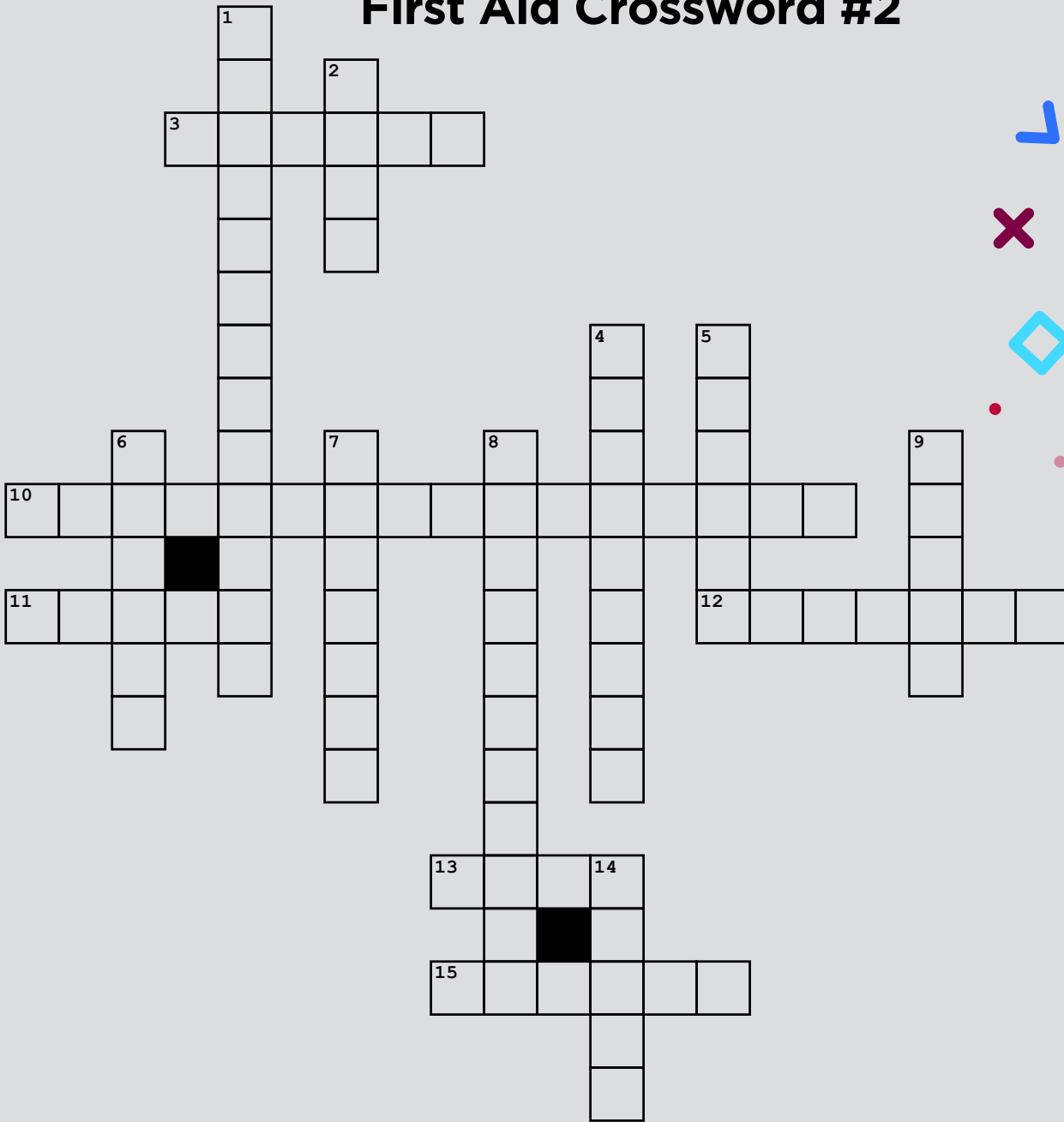
Across

1. these are checked every 5-10 minutes
6. someone who is nearby that can help you treat a victim
7. "____ over Limb"
8. number of breaths after CPR compressions
9. The S in FAST for symptoms of a stroke a stroke victim
10. used to control life-threatening bleeding of a limb
12. the B in ABCs
14. breathing disorder where airway sensitivity is increased

Down

2. someone over the age of 8
3. place on the chest of an adult/child for landmarking CPR
4. type of victim who requires 2 breaths before CPR starts
5. a barrier device for your hands
9. surgical hole in the victim's neck used for breathing
11. the first P in the goals of first aid

First Aid Crossword #2



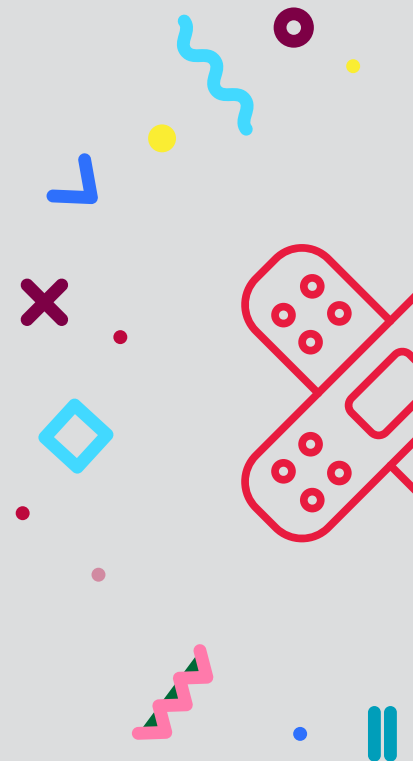
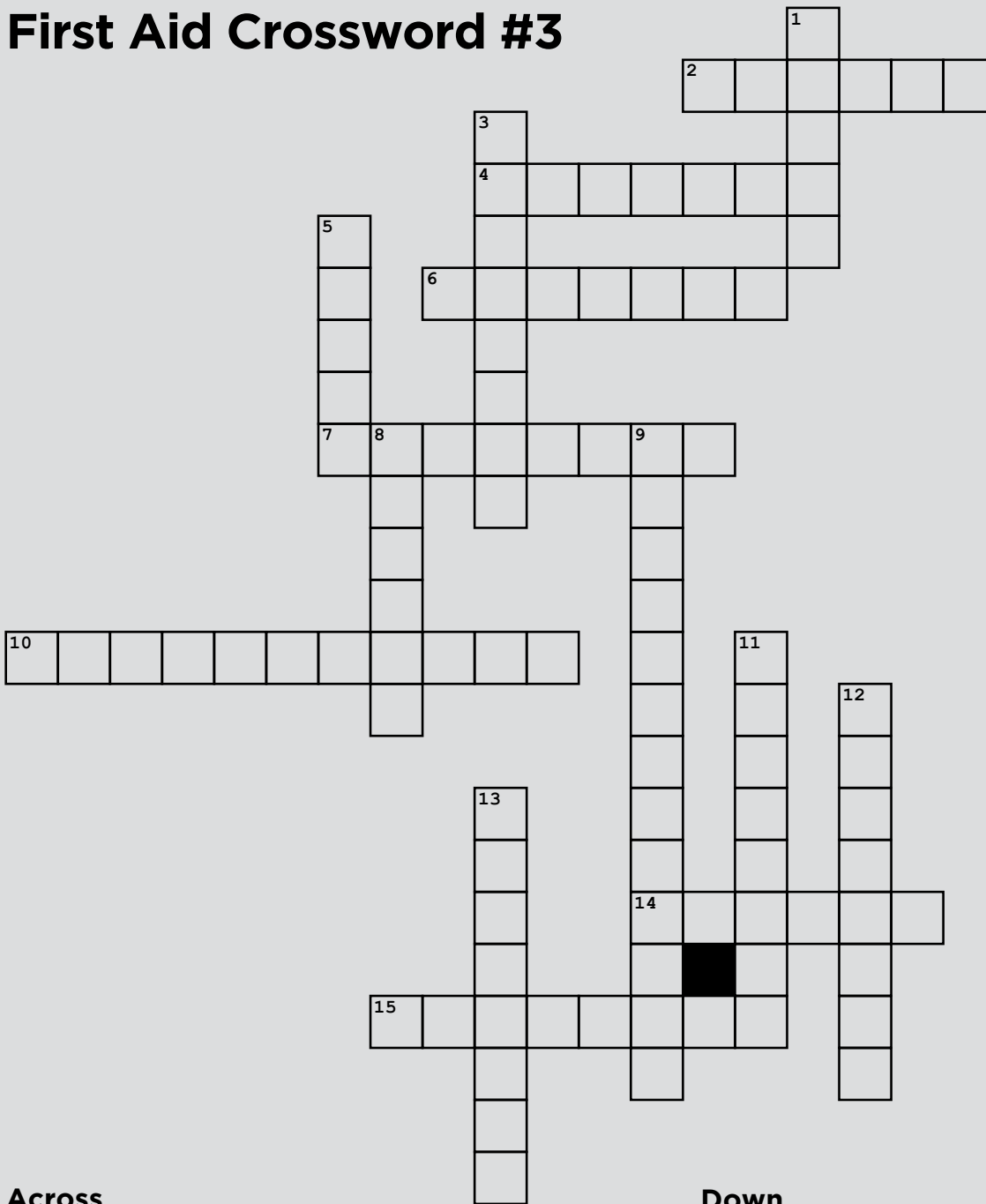
Across

- 3. carries blood away from the heart
- 10. looks like "over breathing"
- 11. surface head injury affecting skin and _____
- 12. depth of breath
- 13. head tilt/chin ____
- 15. a condition caused by poor blood circulation to the heart

Down

- 1. when the heart stops beating
- 2. carries blood to the heart
- 4. quick visual check for 5 seconds
- 5. must be equal and reactive to rule out a head injury
- 6. type of injury that affects the backbone
- 7. position recommended for chest pain/shortness of breath
- 8. the C in ABC priorities
- 9. someone between the ages of 1 and 8
- 14. degree of burn with red, black and grey tissue

First Aid Crossword #3



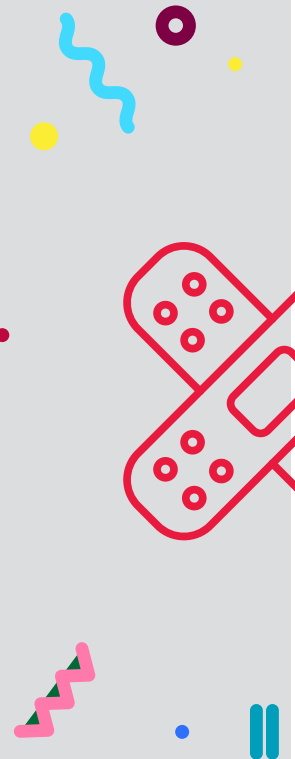
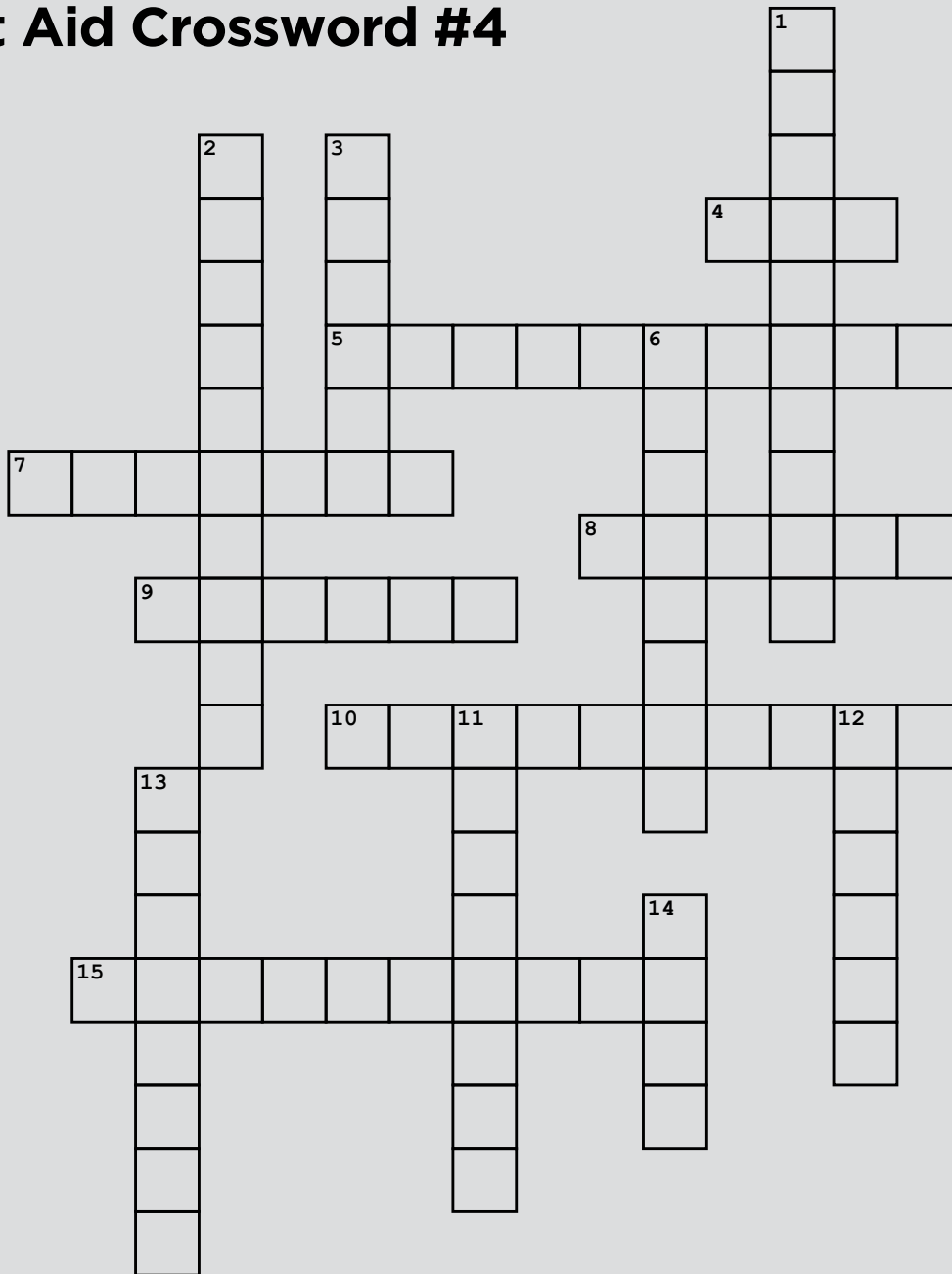
Across

2. diving into shallow water causes this
4. flailing/jerking of arms and legs
6. medication that can reduce the effects of a heart attack
7. sign of infection from a wound
10. bones that "pop out" of alignment
14. an injection containing epinephrine used in severe allergic reactions
15. type of bleeding where the blood is bright red and squirts

Down

1. can appear on the face/body during an allergic reaction
3. flat line heart rhythm
5. helps us breathe
8. the "W" for the treatment of shock
9. medication used to treat angina
11. type/location of pulse in an infant
12. medical condition that affects regulation of sugar levels in the body
13. can happen if you stand up too quickly or are overly active

First Aid Crossword #4



Across

4. you send the bystander to get this when dealing with an unconscious victim
5. facial barrier
7. sign of a second degree burn
8. type of bleeding where blood is dark red and oozes steadily
9. "A" in ABC priorities
10. type of burn that has an entrance wand/or exit wound
15. failure of the body's ability to regulate its temperature

Down

1. wound that could be produced by a human or animal
2. brain injury usually caused by a direct blow to the head/face/neck
3. fracture where bones break and may shift out of alignment
6. can use these to remove splinters
11. the E in AED
12. Recognize, _____, Act
13. poison injury where the affected limb should be kept below heart level
14. you do not bandage around this body part