

Facility Closure



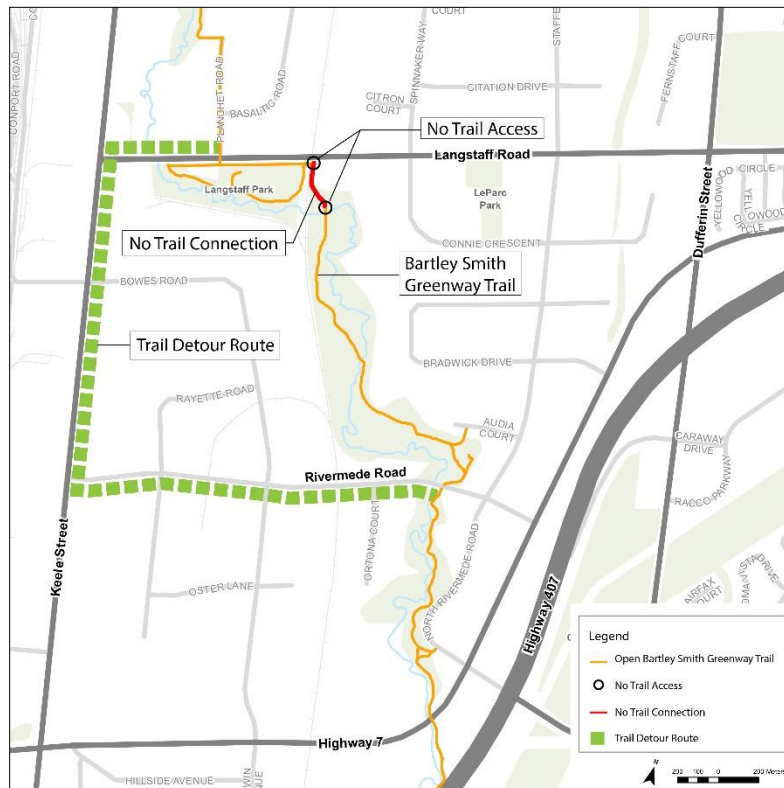
vaughan.ca | [@city_of_vaughan](https://twitter.com/city_of_vaughan) | facebook.com/thecityofvaughan | youtube.com/thecityofvaughan

Bartley Smith Greenway Detour Route

April 18, 2019

Please be advised that access along the Bartley Smith Greenway across the GO rail system is currently closed. We are working on providing a permanent link under the GO rail bridge. It is anticipated that the works to complete the link will take several years to be completed.

A suggested detour route for Bartley Smith Greenway trail along Rivermede Road, Keele Street and Langstaff Road is detailed in the map below.



We apologize for any inconvenience.

For more information, please contact Parks Development at 905-303-2069 or parksdevelopment@vaughan.ca.

After hours, please call the dispatch office at 905-832-2281 and press 0.