

# Facility Closure

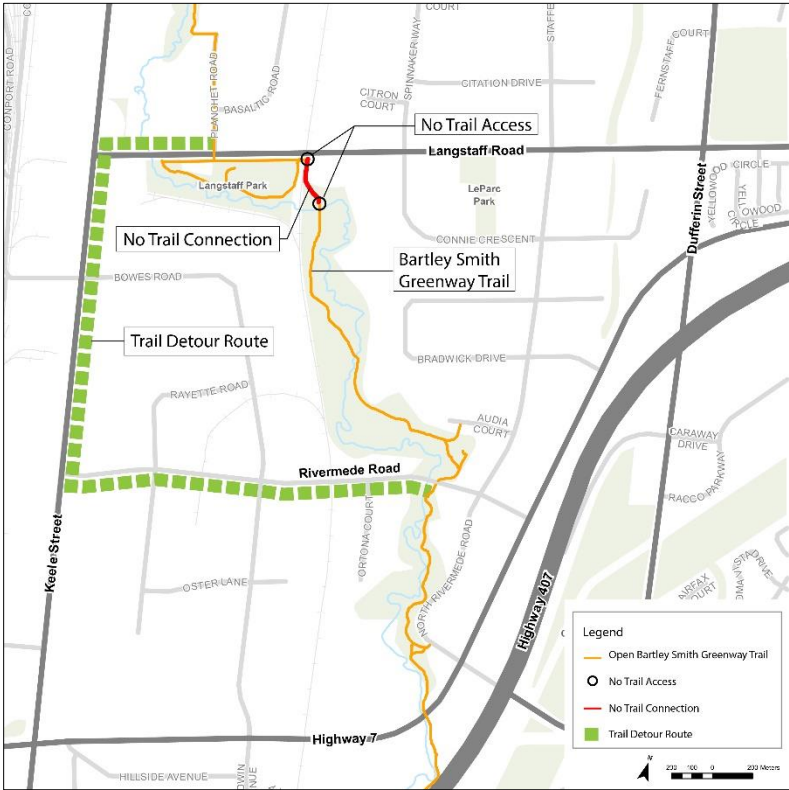
[vaughan.ca](http://vaughan.ca) | [@city\\_of\\_vaughan](https://twitter.com/city_of_vaughan) | [facebook.com/thecityofvaughan](https://facebook.com/thecityofvaughan) | [youtube.com/thecityofvaughan](https://youtube.com/thecityofvaughan)

## Bartley Smith Greenway Detour Route

May 16, 2019

Please be advised that access along the Bartley Smith Greenway across the GO rail system is currently closed. The City of Vaughan is working on developing a permanent path under the GO rail bridge. It is anticipated that the work will take several years to be complete.

A suggested detour route for the Bartley Smith Greenway trail is available along Rivermede Road, Keele Street and Langstaff Road as detailed in the following map.



We apologize for any inconvenience.

For more information, please contact Access Vaughan at 905-832-2281 or [accessvaughan@vaughan.ca](mailto:accessvaughan@vaughan.ca).