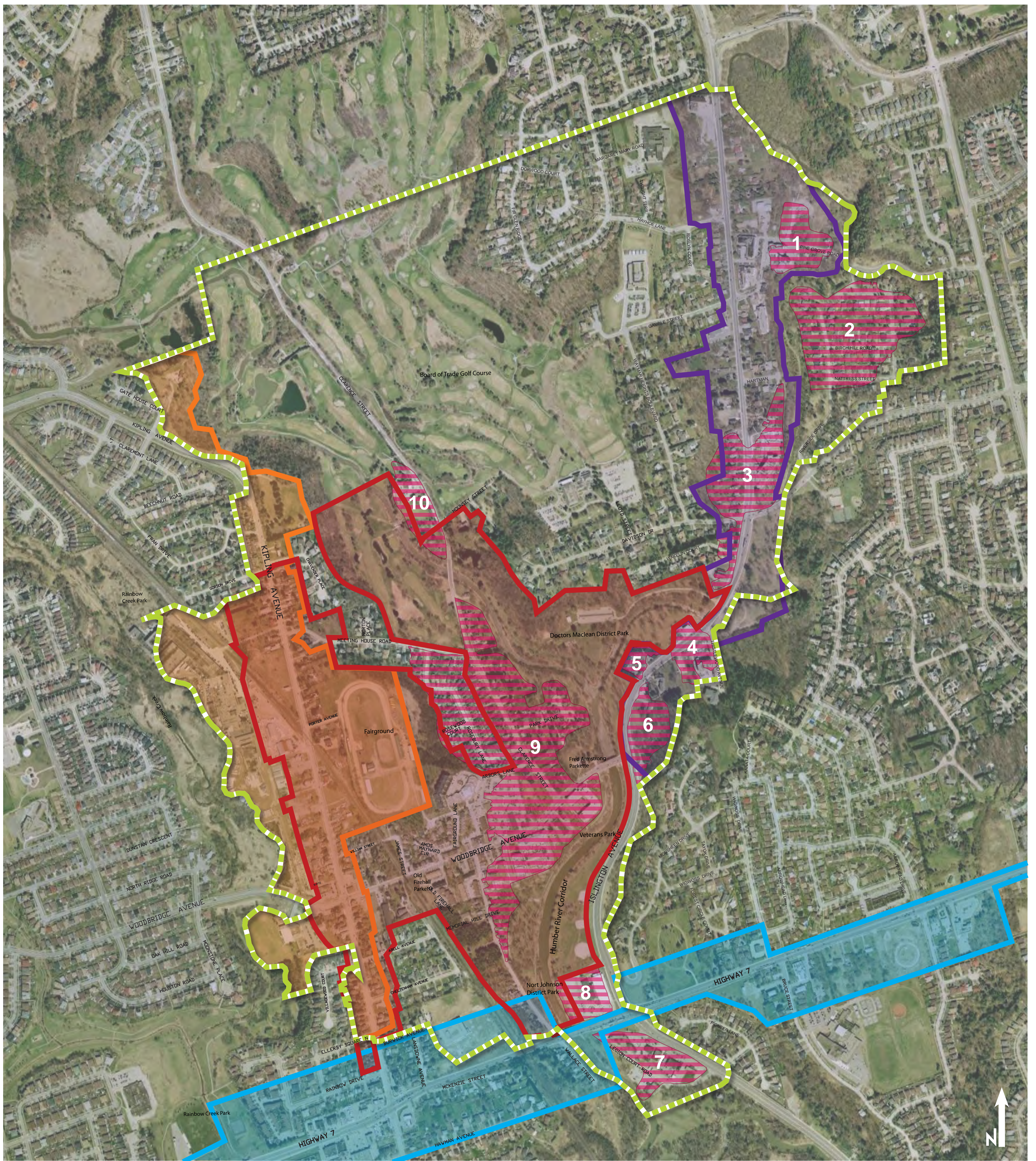








Woodbridge Study Area



Not to scale

LEGEND

-  Woodbridge Study Area
-  Woodbridge Heritage Conservation District Area
-  Kipling Avenue Corridor Study Area (OPA #695)
-  Islington Avenue Corridor Study Area (OPA #597)
-  Highway 7 Corridor Study Area (OPA #661)
-  Special Policy Areas (OPA #240, OPA #440)

Background Review Documents include, but are not limited to:

- The Current City of Vaughan Official Plan Review
- OPA #240 (Woodbridge Community Plan)
- OPA #440 (Woodbridge Historic Commercial Centre)
- OPA # 356 (Kipling Avenue)
- OPA # 661 (Highway #7 Land Use)
- OPA # 597 (Islington Avenue)
- Planning Studies (Kipling Avenue Study; Woodbridge Heritage Conservation District Study)
- Existing Design Guidelines for Woodbridge Core
- "Active Together" Master Plan for Parks, Recreation, Culture and Libraries
- Pedestrian and Bicycle Master Plan
- Transportation Master Plan
- City-Wide Parking Standards Review
- Highway 427 Corridor Extension Environmental Assessment
- Western Vaughan Transportation Improvements Individual Environmental Assessment
- Region of York Official Plan/Amendments
- Toronto and Region Conservation Authority Regulations
- Humber River Watershed Plan
- Draft Terrestrial Natural Heritage Study
- Provincial Policy Statement
- Places to Grow

