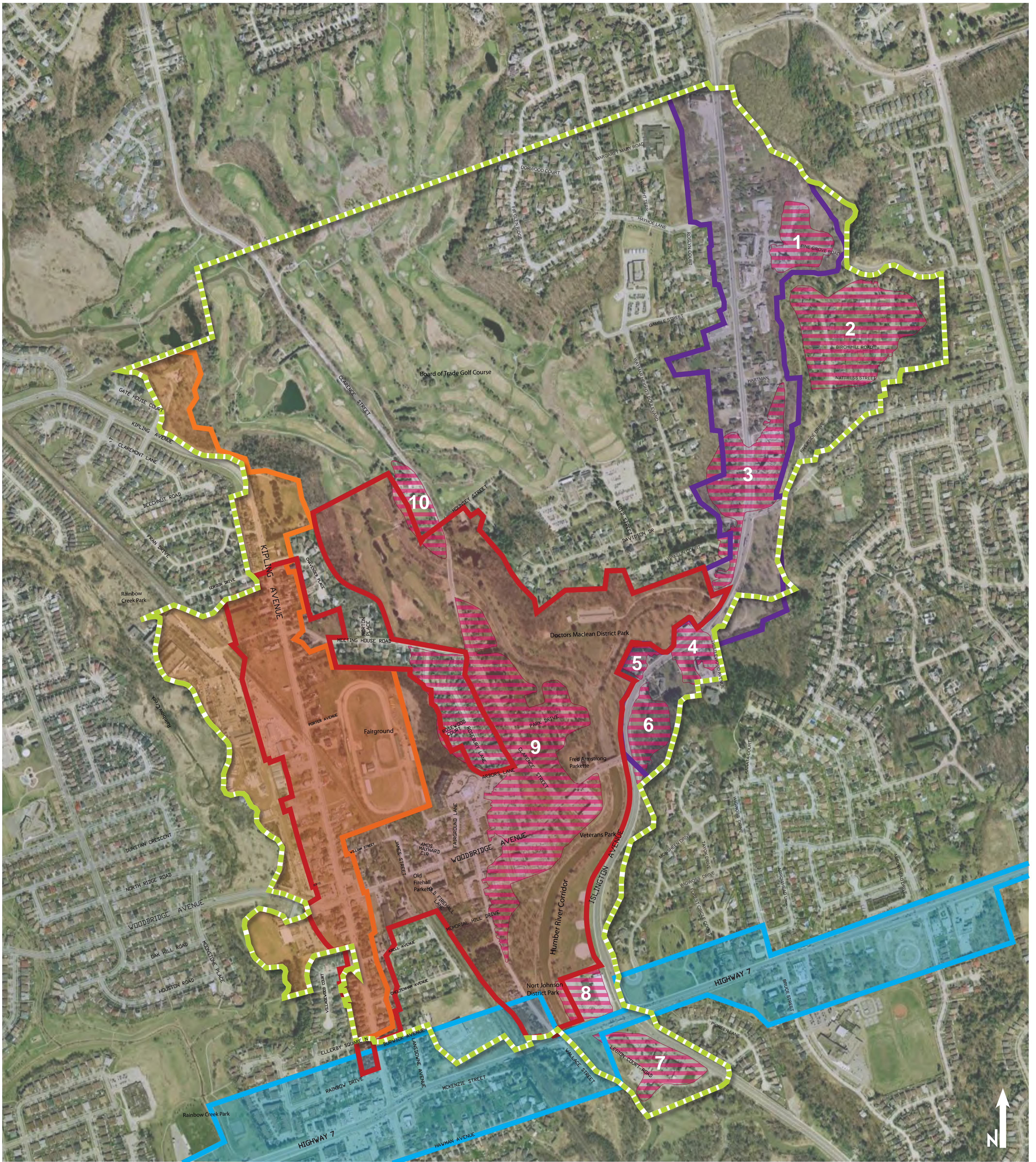








Woodbridge Study Area



Not to scale

LEGEND

-  Woodbridge Study Area
-  Woodbridge Heritage Conservation District Area
-  Kipling Avenue Corridor Study Area (OPA #695)
-  Islington Avenue Corridor Study Area (OPA #597)
-  Highway 7 Corridor Study Area (OPA #661)
-  Special Policy Areas (OPA #240, OPA #440)

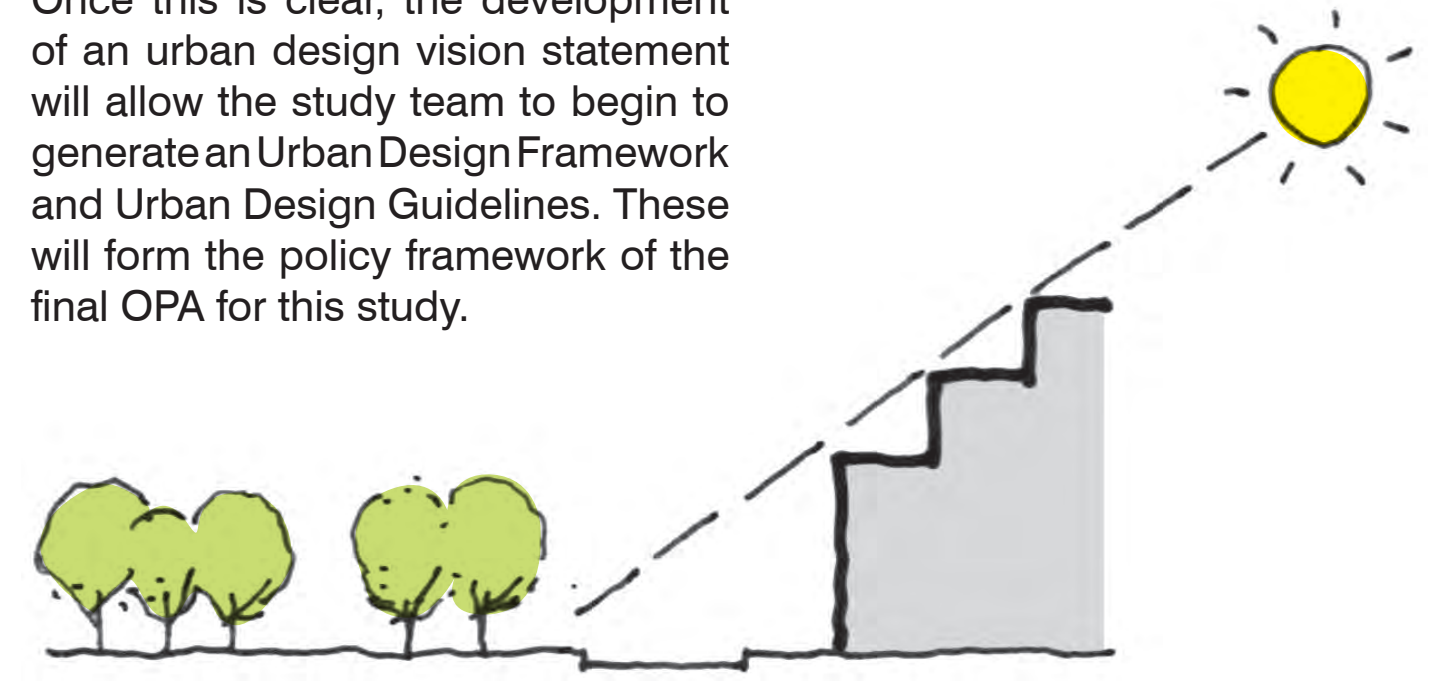
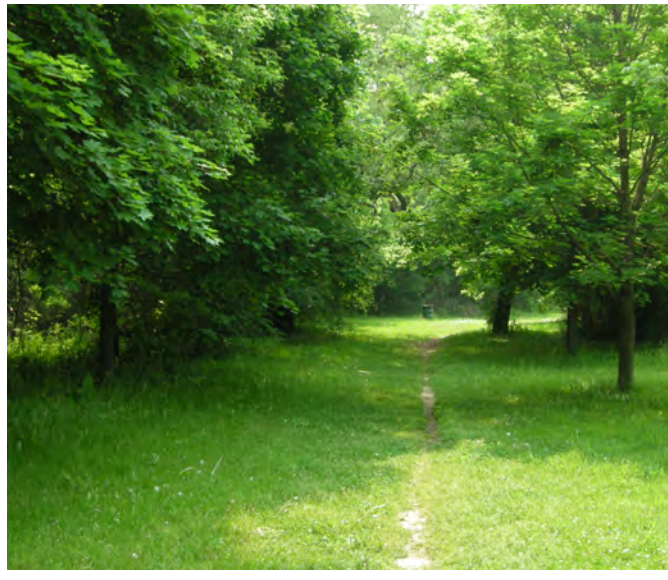
Background Review Documents include, but are not limited to:

- The Current City of Vaughan Official Plan Review
- OPA #240 (Woodbridge Community Plan)
- OPA #440 (Woodbridge Historic Commercial Centre)
- OPA # 356 (Kipling Avenue)
- OPA # 661 (Highway #7 Land Use)
- OPA # 597 (Islington Avenue)
- Planning Studies (Kipling Avenue Study; Woodbridge Heritage Conservation District Study)
- Existing Design Guidelines for Woodbridge Core
- "Active Together" Master Plan for Parks, Recreation, Culture and Libraries
- Pedestrian and Bicycle Master Plan
- Transportation Master Plan
- City-Wide Parking Standards Review
- Highway 427 Corridor Extension Environmental Assessment
- Western Vaughan Transportation Improvements Individual Environmental Assessment
- Region of York Official Plan/Amendments
- Toronto and Region Conservation Authority Regulations
- Humber River Watershed Plan
- Draft Terrestrial Natural Heritage Study
- Provincial Policy Statement
- Places to Grow



Woodbridge Focused Area Study Process

Objectives

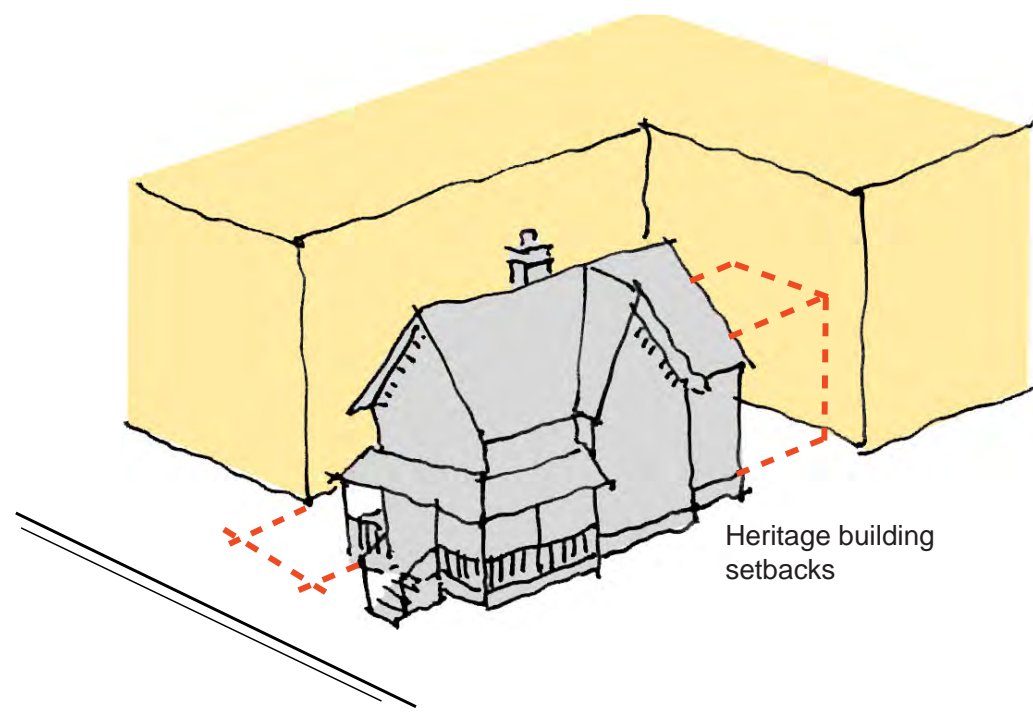


The objective of the Woodbridge Focused Area Study is to develop a land use and urban design policy framework for the Woodbridge Study Area which will become an Official Plan Amendment (OPA) to the City of Vaughan Official Plan.

The scope of work involves a thorough policy review of existing OPAs, master plans, and conservation studies. Transportation studies, a parks assessment and a review of Special Policy Area boundaries and policies are also components of the Study. This will ensure the development of a cohesive policy framework for the diverse Woodbridge Study Area.

Once this is clear, the development of an urban design vision statement will allow the study team to begin to generate an Urban Design Framework and Urban Design Guidelines. These will form the policy framework of the final OPA for this study.

Study Process



The Woodbridge Focused Area Study is designed to take place between March 2009 through to February 2010.

The process is divided into 4 Phases that provide a framework for the work to be undertaken.

This includes:

- Background research and assessments;

- an urban design analysis;
- the development of a vision;
- the development of urban design guidelines; and
- the generation of the Official Plan Amendment Document.

Phases 2 and 3 are dependent on public input and participation for the development of the Vision

and urban design guidelines. As well, the process includes ongoing consultation with City staff, and various key agencies and stakeholders.

Currently, we are in Phase 1: Gap Analysis, which entails a complete review of all Studies within the Woodbridge Core Area, identifying policy gaps and opportunities to establish a unified Vision.

