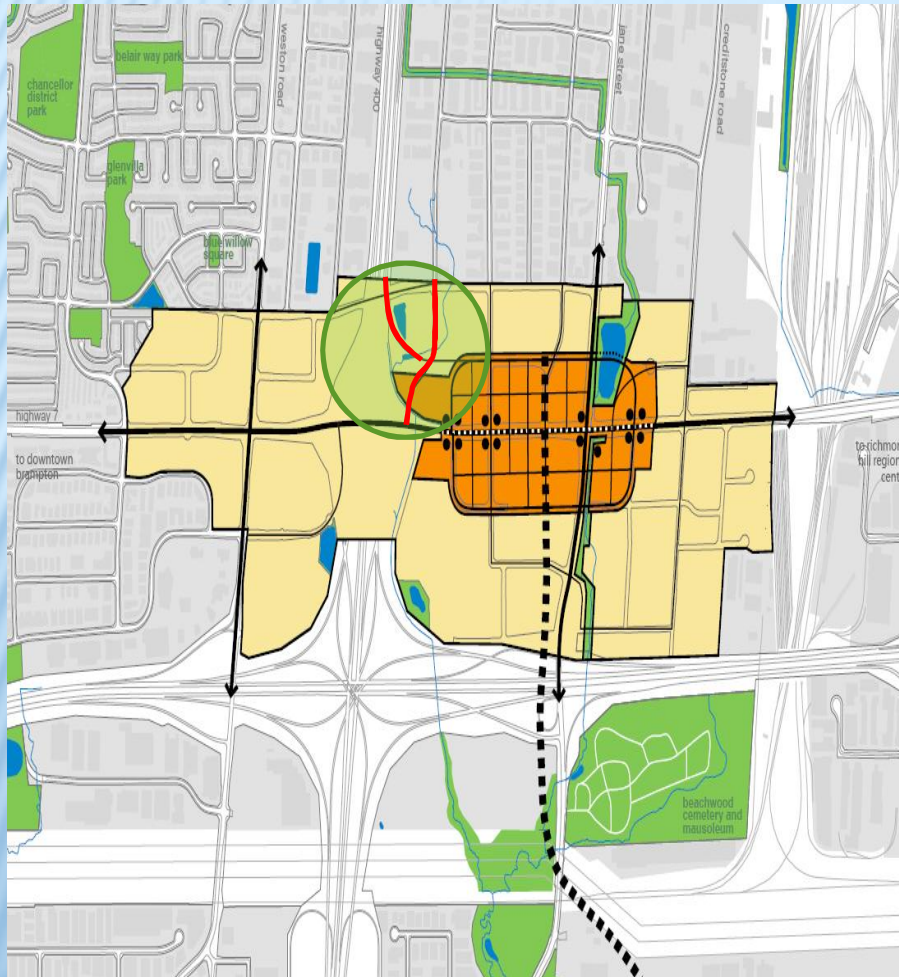


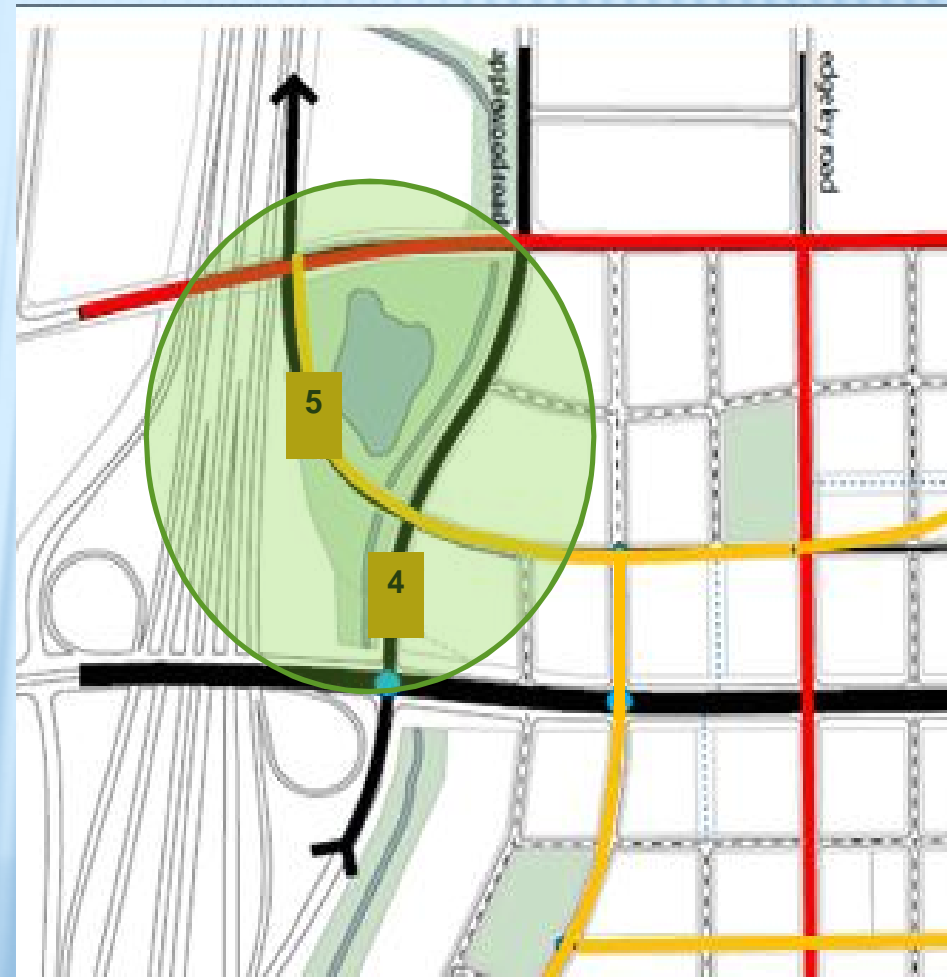


Links 4 and 5 Still Key Elements

Official Plan Amendment 528



Reconfigured Links 4 and 5





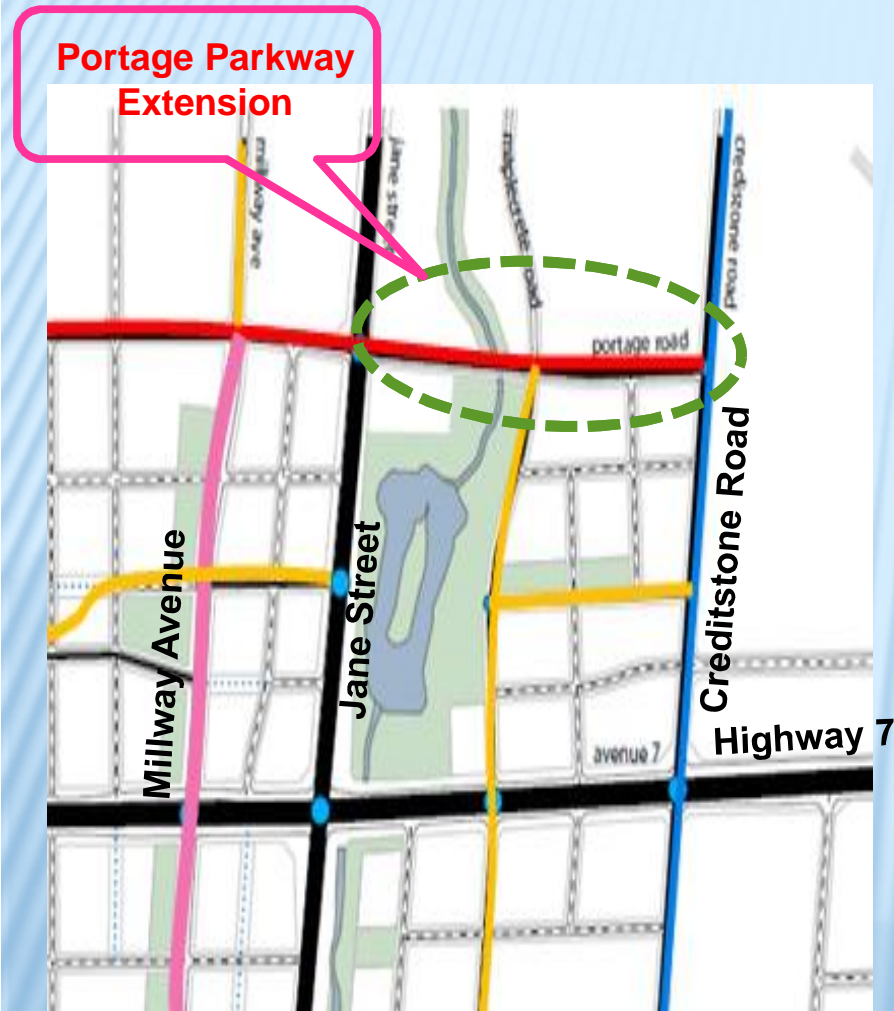
Creditstone Road Upgrading



- ◆ Support intensification with in VMC and Jane Street corridor
- ◆ widening from 2 to 5 lane cross section south of Highway 7
- ◆ widening from 4 to 5 lane cross section north of Highway 7 to Rutherford Road
- ◆ serves as an eastern bypass to divert truck traffic from Highway 7 to Portage, Langstaff and eventually Colossus
- ◆ ROW widening required to 35 m.



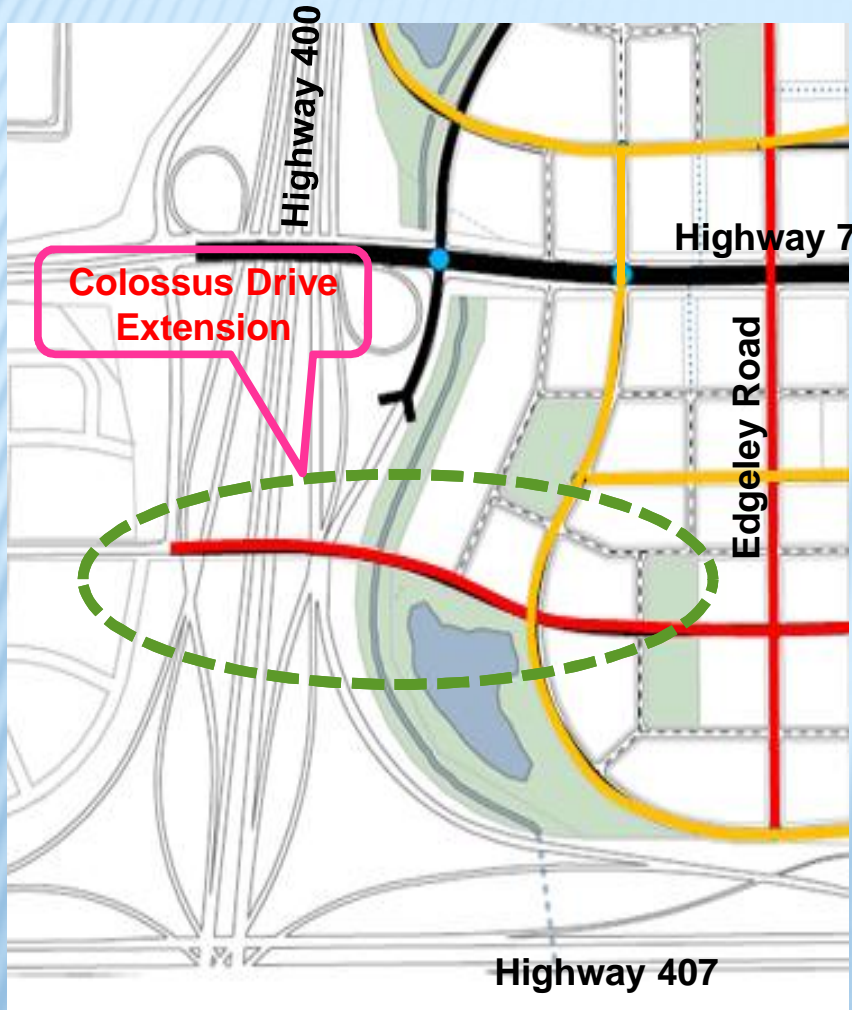
Portage Parkway Extension



- ◆ new 4 lane collector from Jane Street to Creditstone Road
- ◆ requires creek crossing and some property for new ROW
- ◆ compatible with OPA 528
- ◆ provides relief for Highway 7 by functioning as a northern bypass particularly for trucks



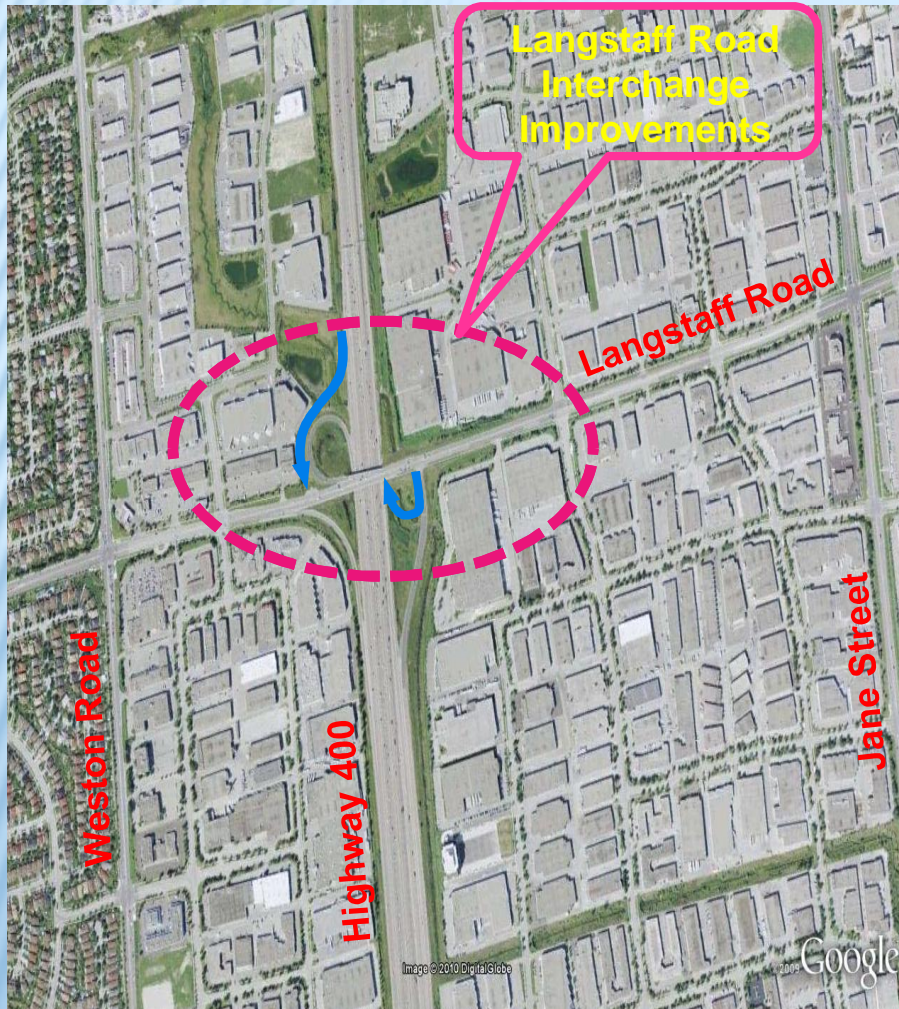
Colossus Drive Extension-Long Term (new crossing of Highway 400)



- ◆ 4 lane collector from West of Highway 400 to Interchange Way
- ◆ Serves as a southern bypass to divert traffic from Highway 7 including trucks.
- ◆ Increases roadway system capacity
- ◆ Improves travel times
- ◆ Facilitates enhanced transit
- ◆ Costly, but significant system benefits

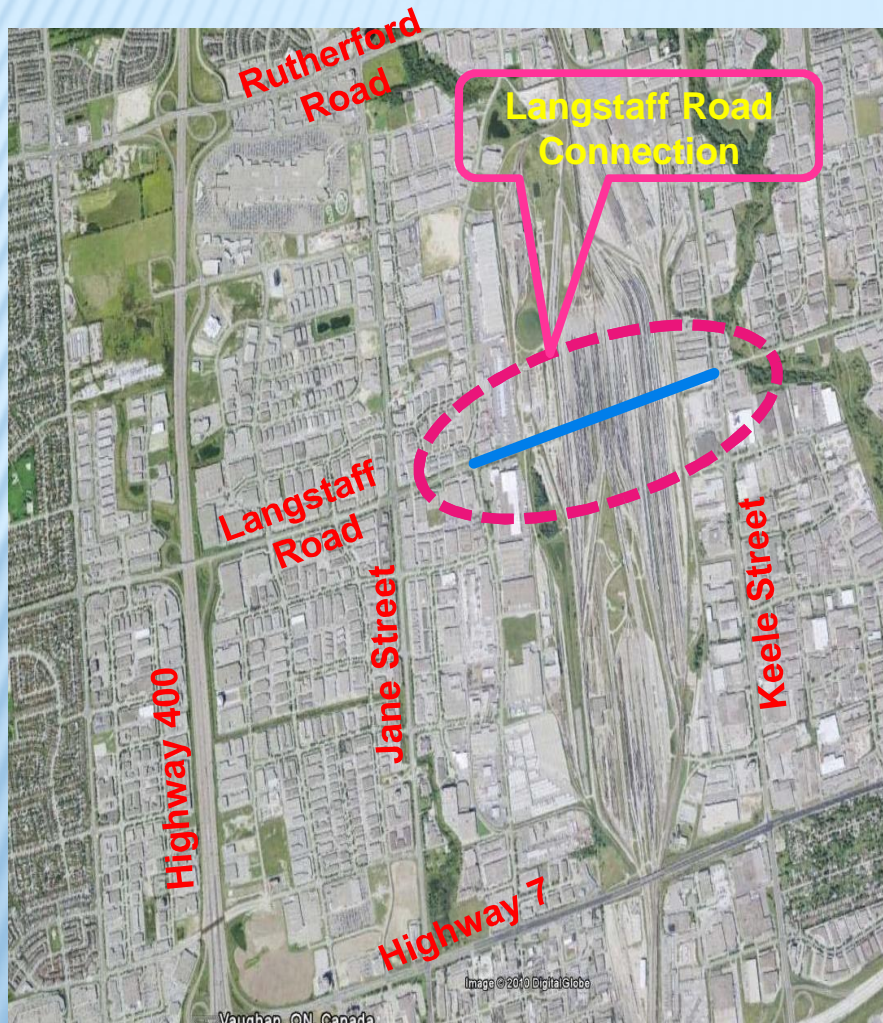


Langstaff Road / Hwy. 400 Interchange Improvements



- ◆ NB on-ramp is proposed to be located in the SE quadrant of the interchange (existing NB off-ramp may need to be relocated)
- ◆ SB off-ramp is located in the NW quadrant (existing SWM pond may need to be reconfigured)
- ◆ new traffic signal required on Langstaff Road west of Hwy. 400
- ◆ integral component of VMC truck strategy
- ◆ divert traffic away from Hwy. 7 interchange, particularly trucks

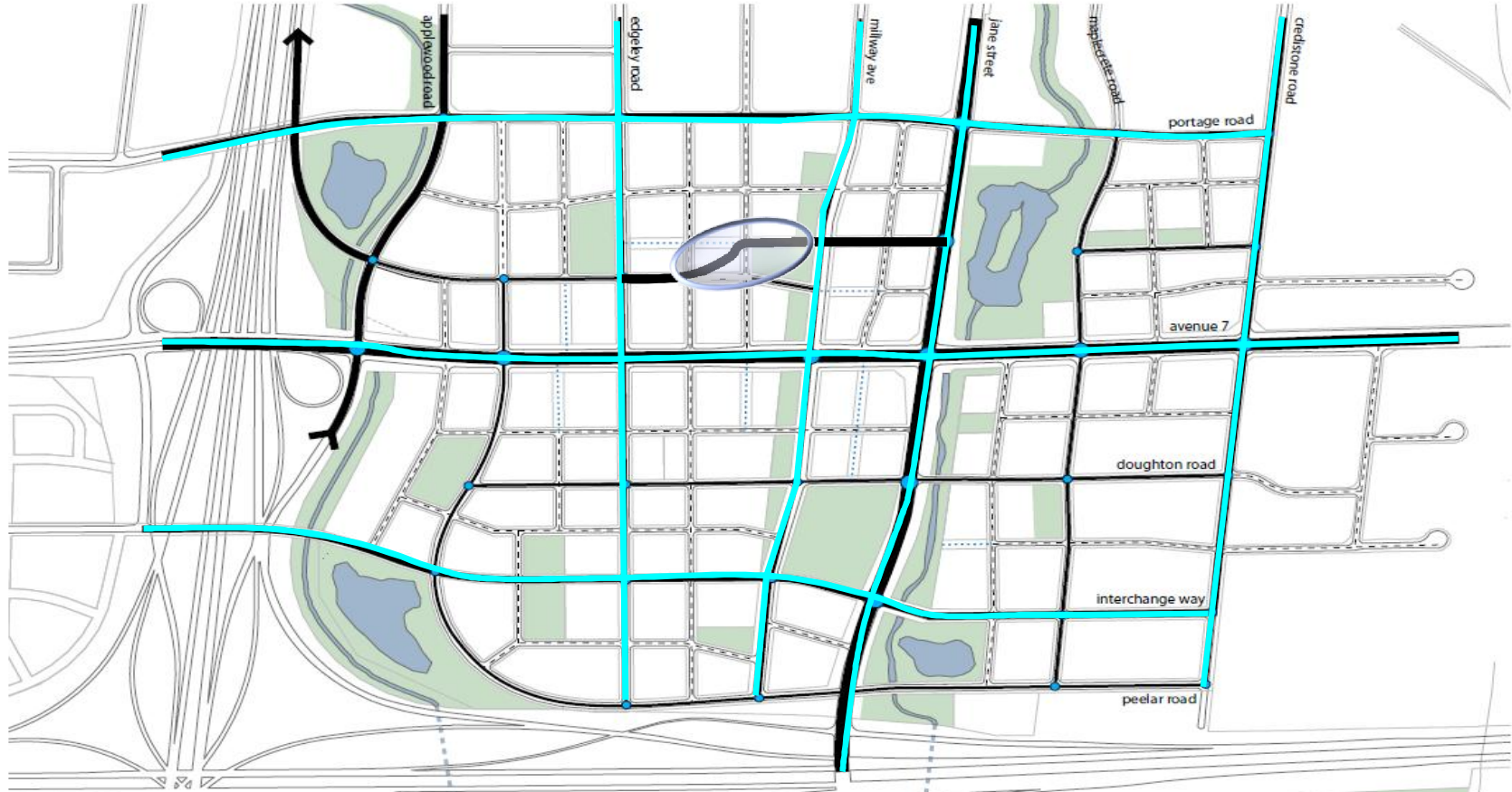
Langstaff Road Across CN Rail Yard



- ♦ would increase the traffic movements at the Highway 400 / Langstaff Road interchange, thus relieving the Highway 7/400 and Rutherford/400 interchanges.
- ♦ new connection would provide a substantial increase in east-west capacity.
- ♦ this link will provide relief to both Highway 7 and Rutherford Road.
- ♦ will link residential developments west of Weston Road to industrial areas east of CN rail yard.



VMC Proposed Cycling Network



- LEGEND**
- Dedicated On-Road Cycling Lanes
 - Geometric Details to be Studied Further

Vaughan Metropolitan Centre



Truck Route Proposals

