

- Legend**
- Storm Sewer Inlet
 - Storm Sewer/SWM Pond Outlet
 - Proposed Subway Station
 - 407 Transitway Concept
 - Toronto-York Spadina Subway Extension
 - Watercourse
 - Subwatershed Boundary
 - Stormwater Management Pond
- Land Use**
- Employment Area
 - Vaughn Metropolitan Centre
 - Vellore Urban Village
 - Parkway Belt (1978)
 - OPA 620

Basemapping from Ontario Ministry of Natural Resources, City of Vaughan and Toronto & Region Conservation Authority
 Orthophotography: 1999 and 2007

UTM Zone 17N, NAD 83

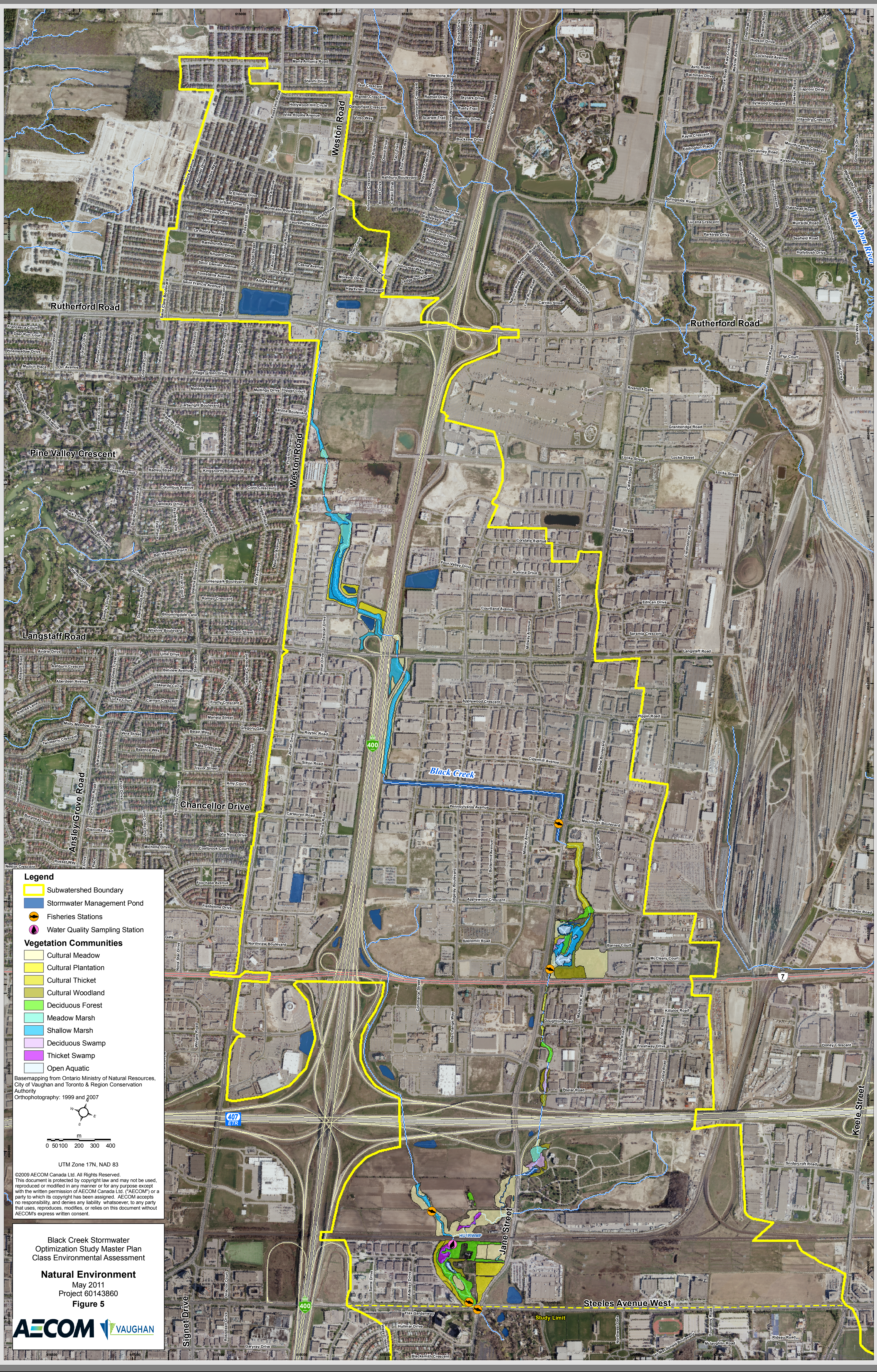
0 50 100 200 300 400

©2009 AECOM Canada Ltd. All Rights Reserved.
 This document is protected by copyright law and may not be used, reproduced or modified in any manner or for any purpose except with the written permission of AECOM Canada Ltd. ("AECOM") or a party to which its copyright has been assigned. AECOM accepts no responsibility, and denies any liability whatsoever, to any party that uses, reproduces, modifies, or relies on this document without AECOM's express written consent.

Black Creek Stormwater Optimization Study Master Plan Class Environmental Assessment

Land Use
 May 2011
 Project 60143860
 Figure 4





Legend

- Subwatershed Boundary
- Stormwater Management Pond
- Fisheries Stations
- Water Quality Sampling Station

Vegetation Communities

- Cultural Meadow
- Cultural Plantation
- Cultural Thicket
- Cultural Woodland
- Deciduous Forest
- Meadow Marsh
- Shallow Marsh
- Deciduous Swamp
- Thicket Swamp
- Open Aquatic

Basemapping from Ontario Ministry of Natural Resources, City of Vaughan and Toronto & Region Conservation Authority
 Orthophotography: 1999 and 2007

UTM Zone 17N, NAD 83

©2009 AECOM Canada Ltd. All Rights Reserved.
 This document is protected by copyright law and may not be used, reproduced or modified in any manner or for any purpose except with the written permission of AECOM Canada Ltd. ("AECOM") or a party to which its copyright has been assigned. AECOM accepts no responsibility, and denies any liability whatsoever, to any party that uses, reproduces, modifies, or relies on this document without AECOM's express written consent.

Black Creek Stormwater Optimization Study Master Plan
 Class Environmental Assessment

Natural Environment
 May 2011
 Project 60143860
Figure 5

