

# Kirby GO Transit Hub Sub-Study

Public Meeting #1

June 9, 2016

GO TRANSIT RAIL LINE

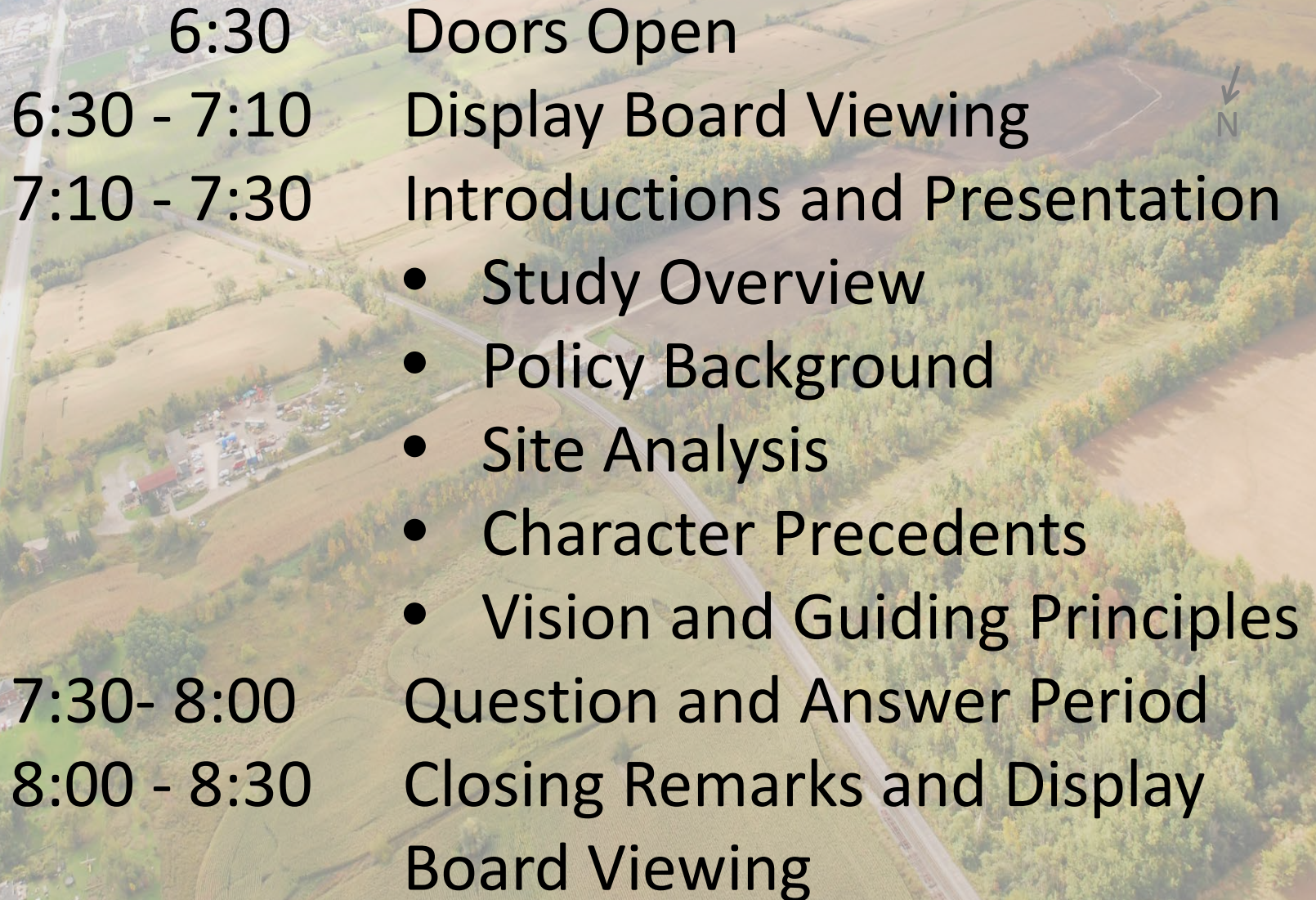
TRANSCANADA PIPELINE

KEELE STREET

GO STATION HUB



# Meeting Agenda

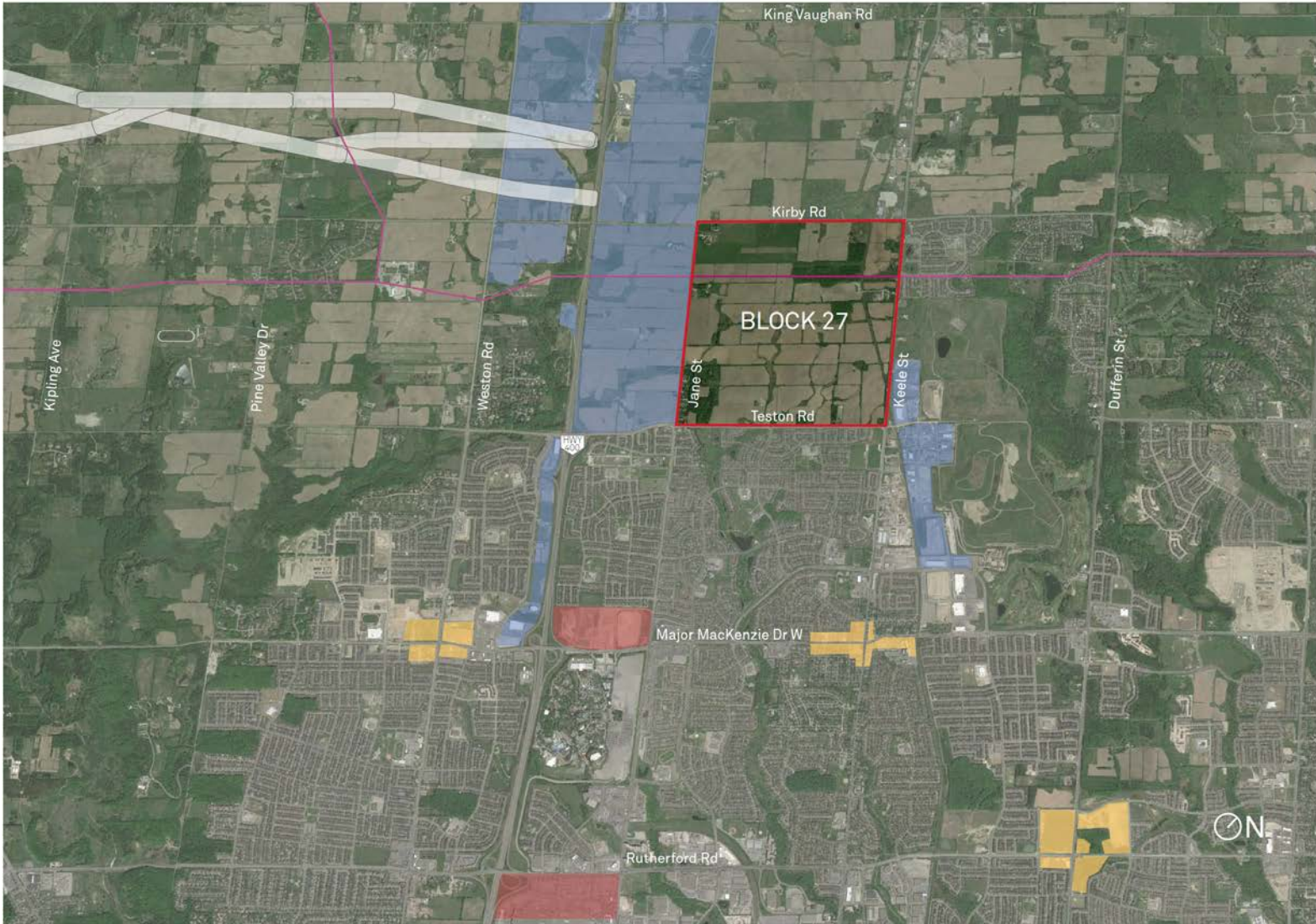
- 
- 6:30 Doors Open
- 6:30 - 7:10 Display Board Viewing
- 7:10 - 7:30 Introductions and Presentation
- Study Overview
  - Policy Background
  - Site Analysis
  - Character Precedents
  - Vision and Guiding Principles
- 7:30- 8:00 Question and Answer Period
- 8:00 - 8:30 Closing Remarks and Display Board Viewing

# Study Overview

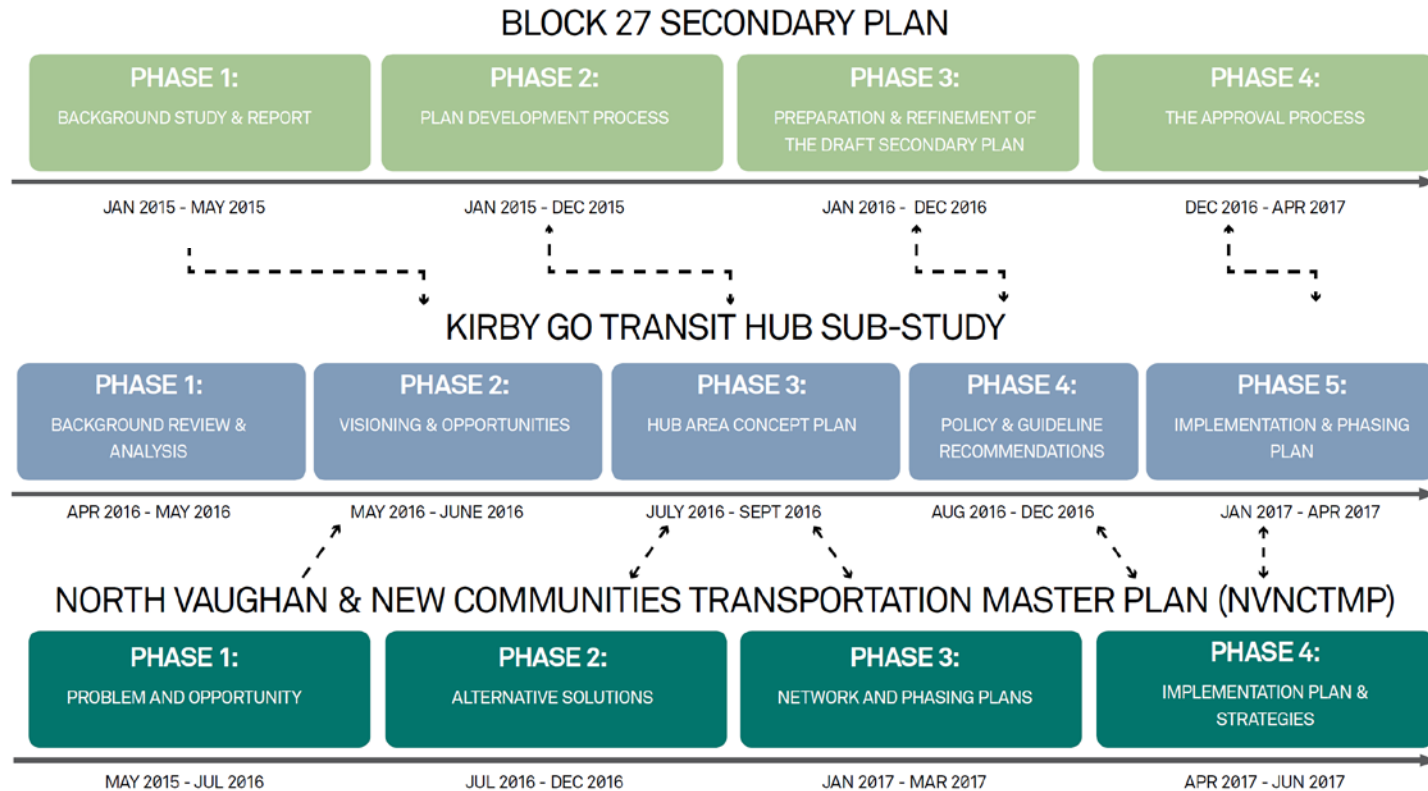
*To present the draft vision, based on a robust planning rationale, which will direct future development of the transit hub and integration with the rest of Block 27 and surrounding areas.*



# Study Overview



# Study Overview

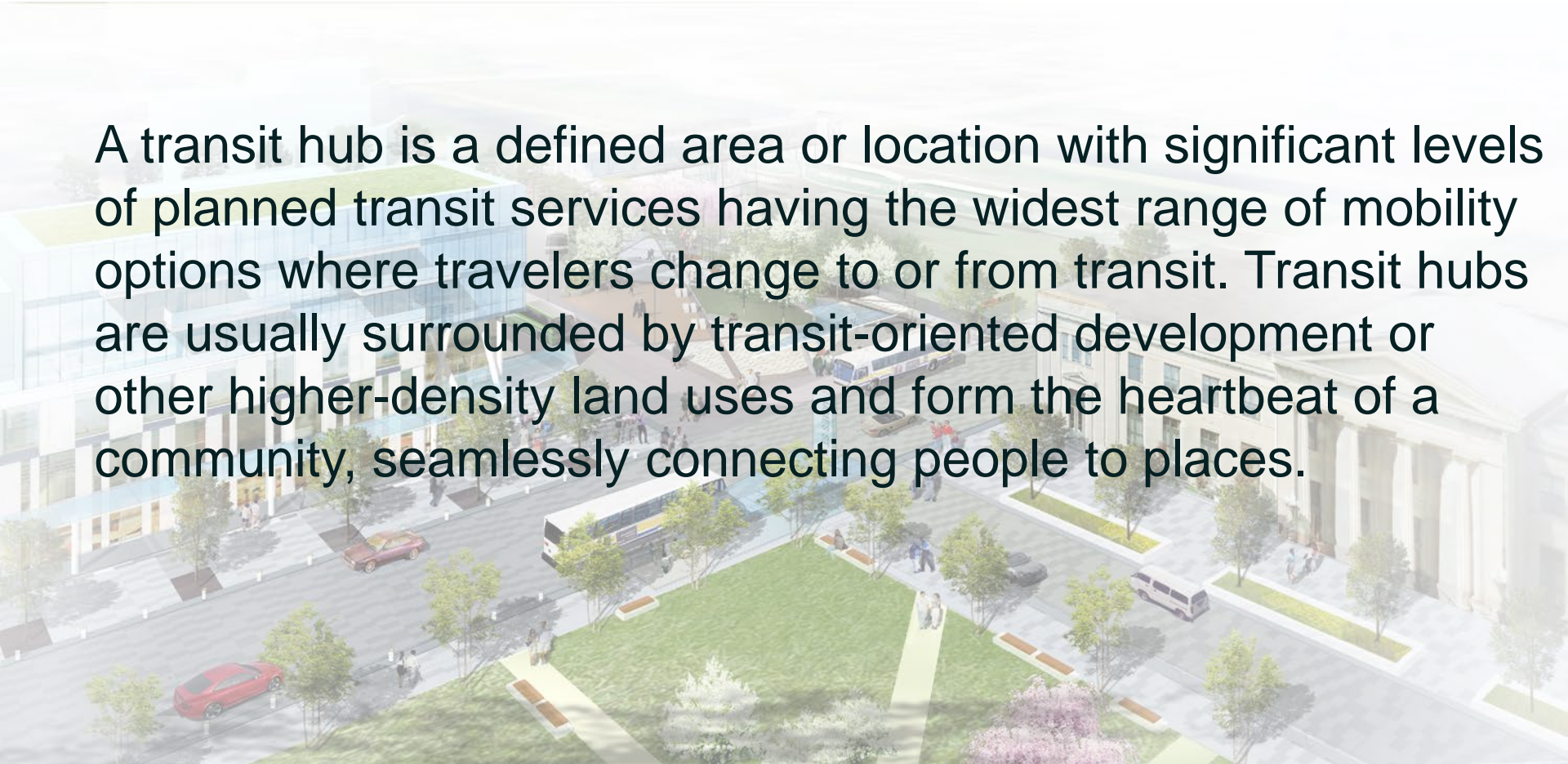


# Transit Hubs



# Transit Hubs

A transit hub is a defined area or location with significant levels of planned transit services having the widest range of mobility options where travelers change to or from transit. Transit hubs are usually surrounded by transit-oriented development or other higher-density land uses and form the heartbeat of a community, seamlessly connecting people to places.



# Policy Overview



- Guiding Documents

- Growth Plan for the Greater Golden Horseshoe
- City of Vaughan Official Plan
- York Region Official Plan (under review)
- Metrolinx Mobility Hub Guidelines
- City of Vaughan Transportation Master Plan



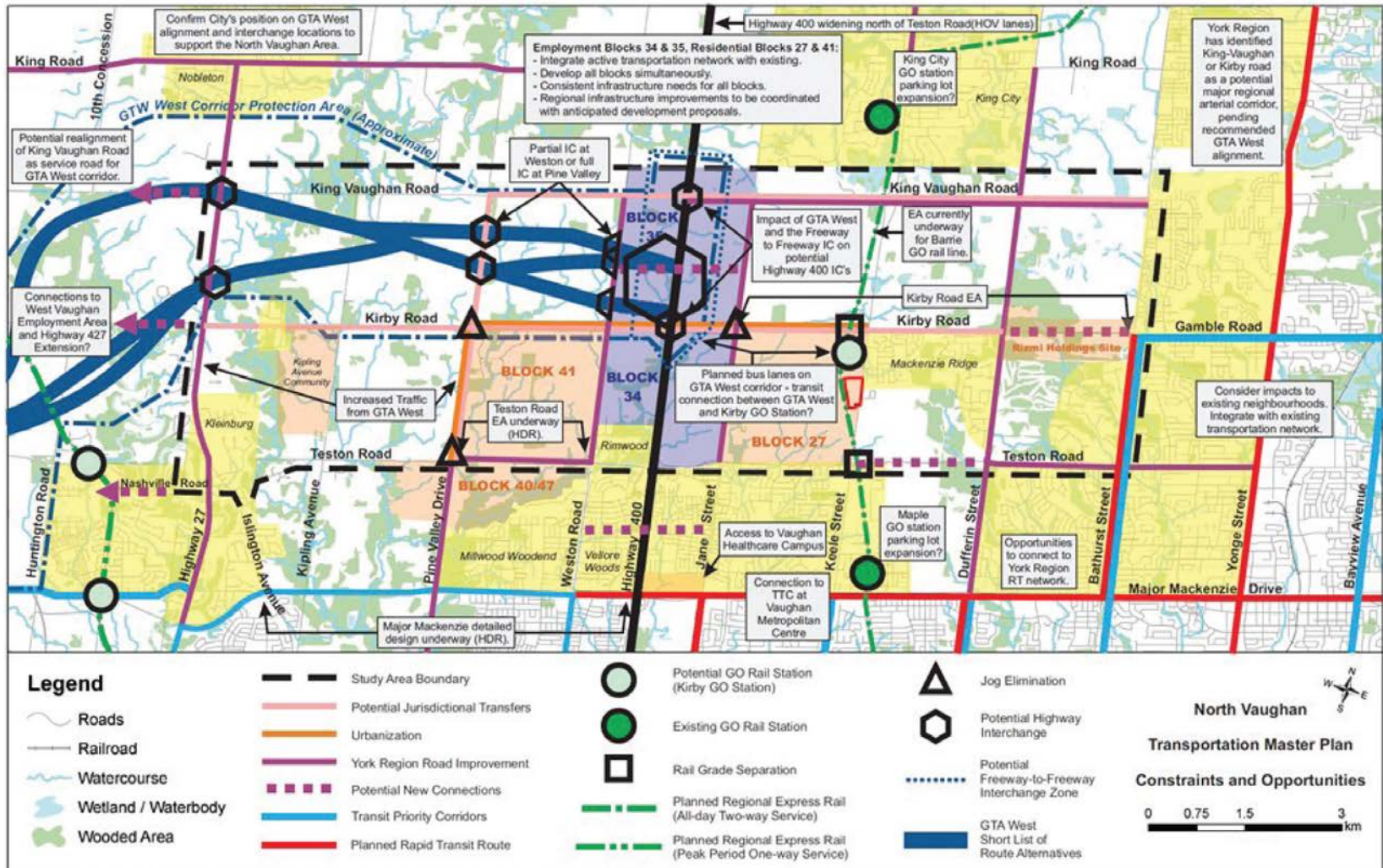


# Concurrent and Interrelated Studies: Block 27 Secondary Plan – Emerging Land Use Concept



# Concurrent and Interrelated Studies:

## North Vaughan and New Communities Transportation Master Plan (NVNCTMP)



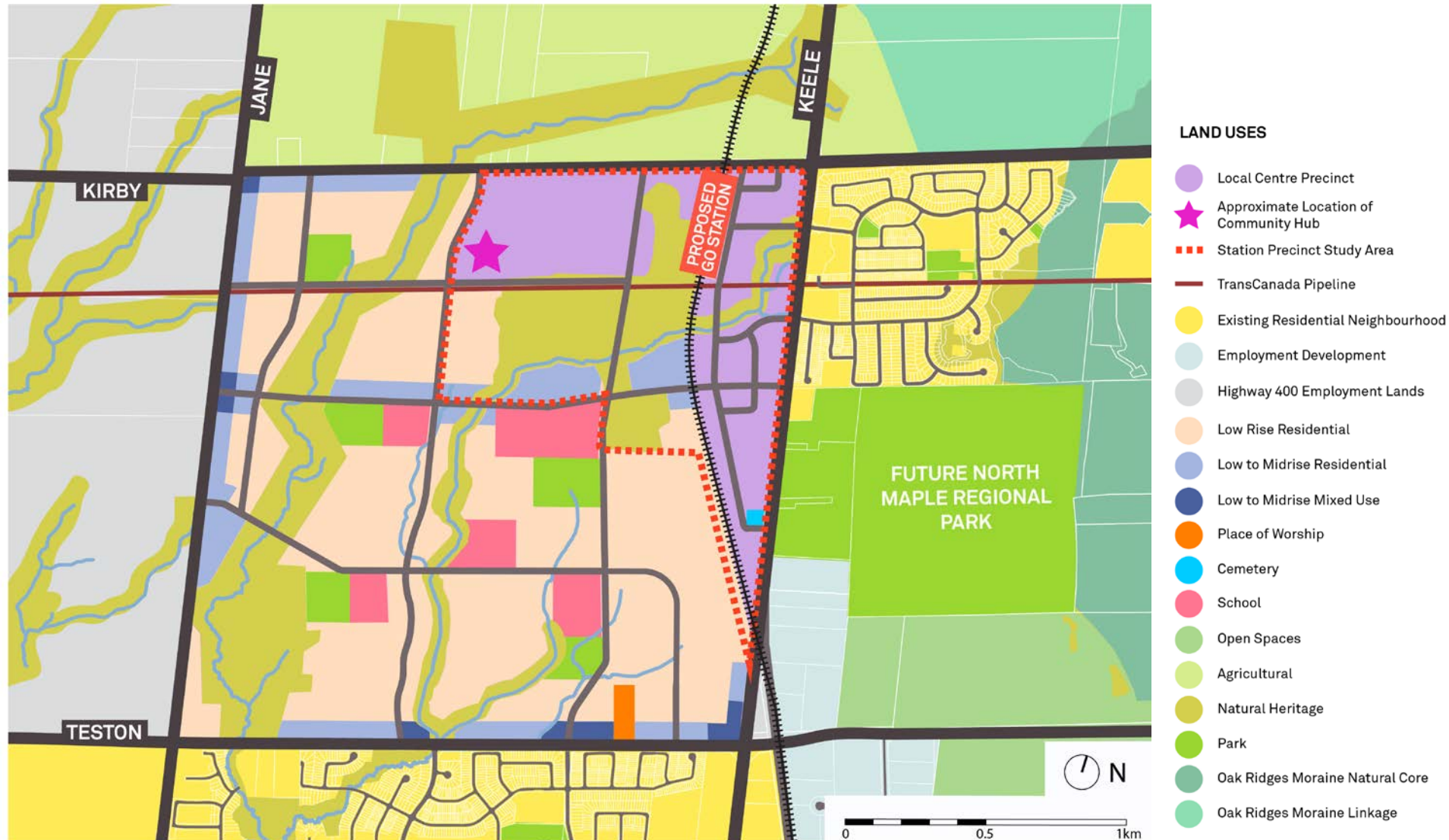
# What We Have Heard

**April 2015 GO Station Workshop –  
Visioning Workshop with Metrolinx  
and Key Stakeholders and May 2015  
GO Station Workshop – Public  
Visioning Session**

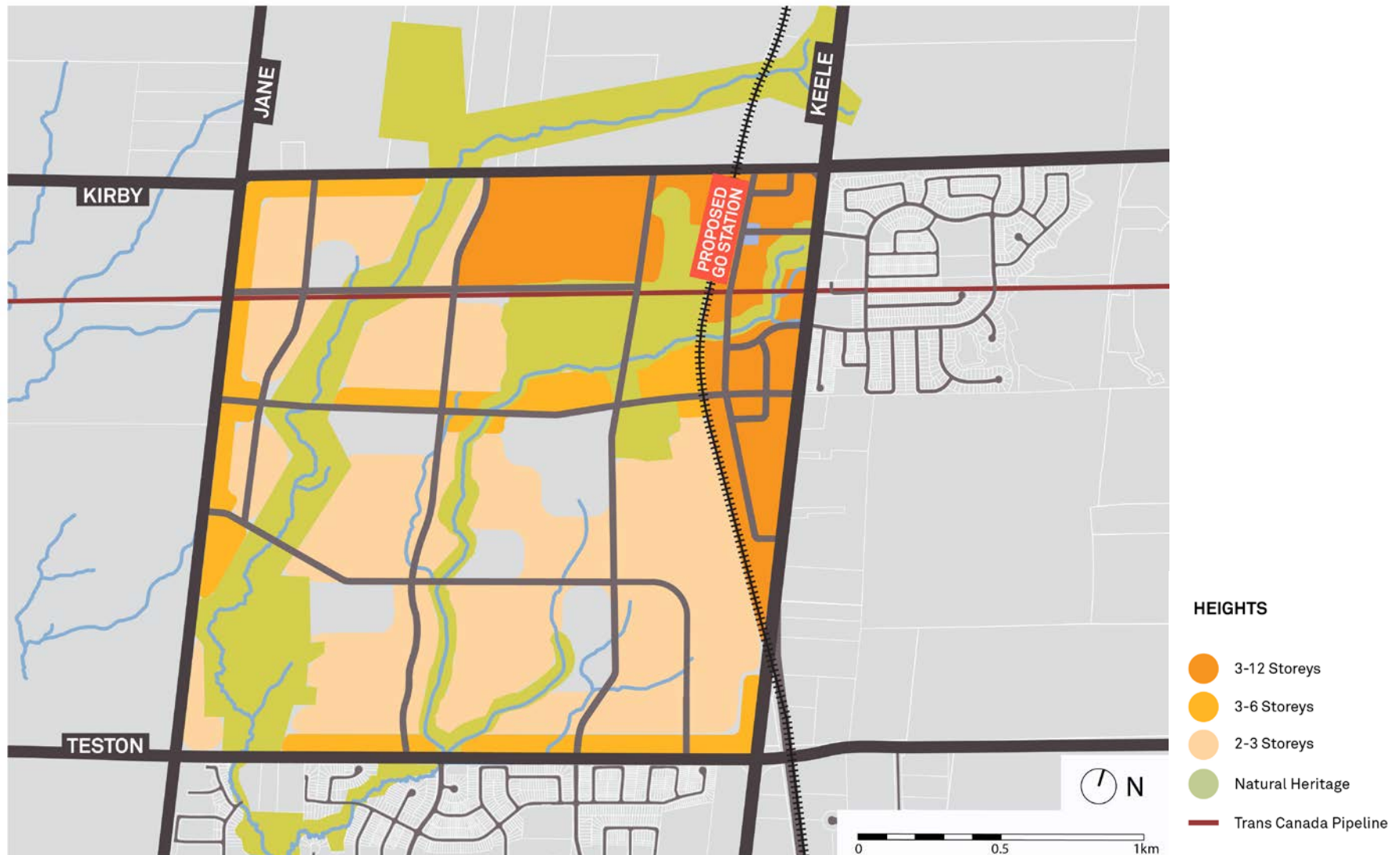
- **Buildings and Uses**
- **Streetscapes and Mobility**
- **Parks and Open Spaces**
- **Sustainability**



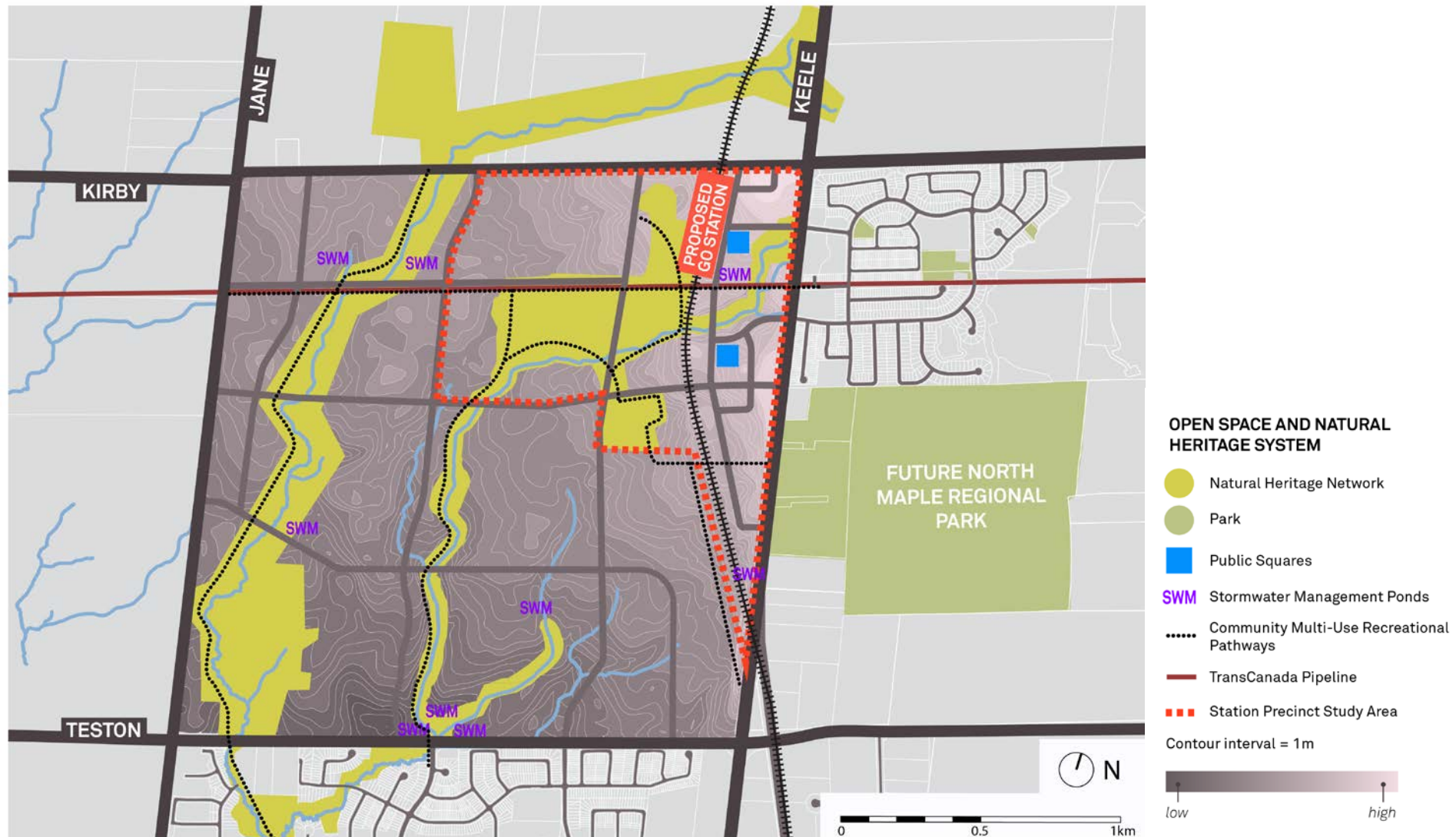
# Analysis- DRAFT Land Uses



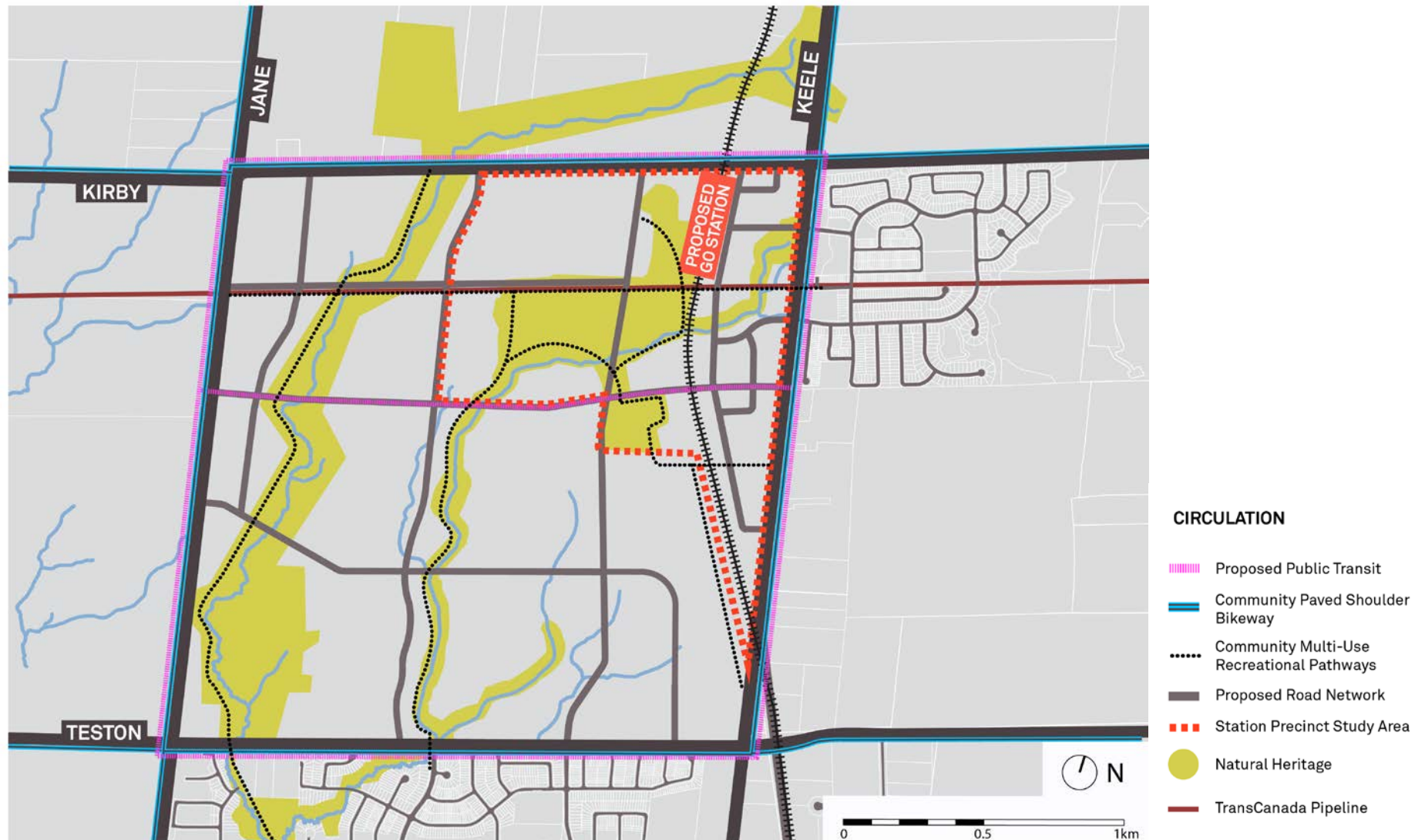
# Analysis- DRAFT Heights



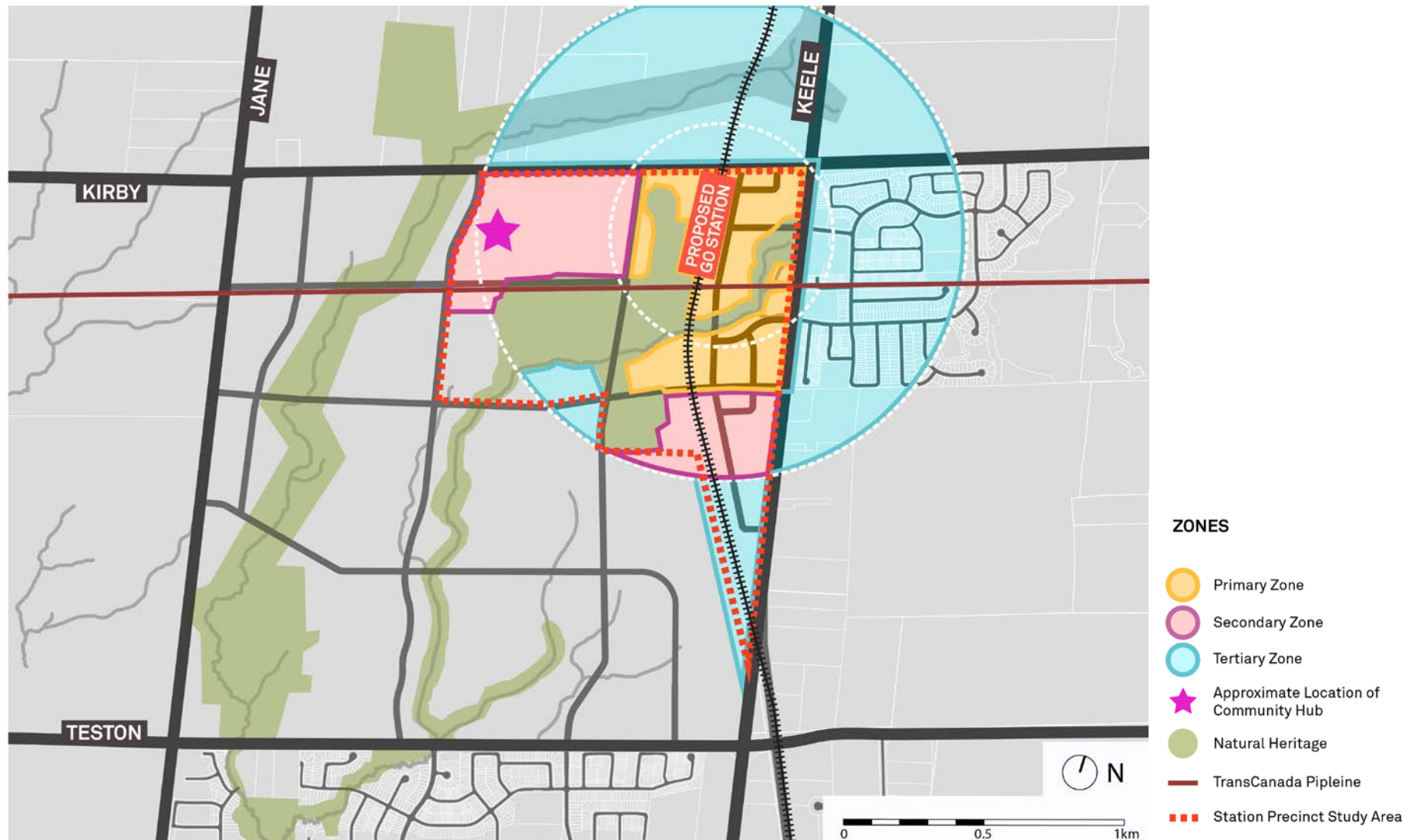
# Analysis- DRAFT Open Space and Natural Heritage



# Analysis- DRAFT Automobile, Public Transit and Bicycle Network



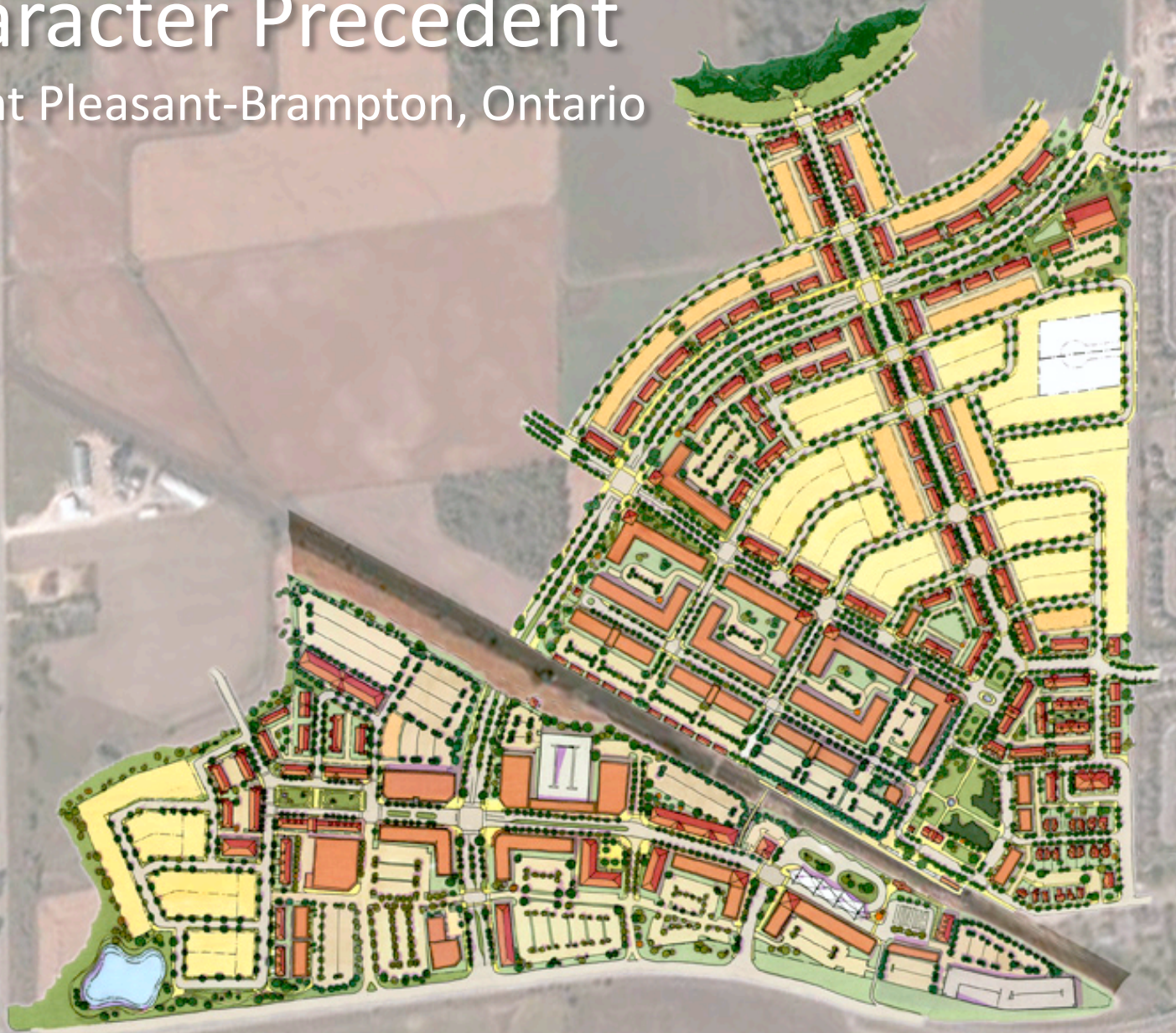
# Analysis- DRAFT Transit Hub Zones





# Character Precedent

Mount Pleasant-Brampton, Ontario



# Character Precedent

Mount Pleasant- Brampton, Ontario

## Area Characteristics

1. Neoclassical station features vintage-style clock
2. Public square north of the GO Station connects to a green “spine” providing access to a City park, woodlots and natural areas
3. Low and mid-rise residential, commercial and institutional buildings
4. Radial street pattern



# Character Precedent

James Street North-Hamilton, Ontario



# Character Precedent

James Street North-Hamilton, Ontario

## Area Characteristics

1. Public square adjacent to GO Station fronting James Street North
2. Predominantly low-density built form with low-rise residential uses, and two to four storey mixed-use commercial, industrial and employment buildings
3. Destination for music and arts
4. Green spine planned linking GO Station and regional waterfront parks



# Character Precedent

Port Credit Mississauga Ontario



# Character Precedent

Port Credit, Mississauga ON, Canada

## Area Characteristics

1. Highest density development near GO Station
2. Public open spaces along water frontage and private courtyards
3. Variety of building types including 4-6 storey mid-rise buildings
4. Tiered buildings with open courtyard to maximize views
5. Wide streets, large building setbacks



# Character Precedent

Odenplan Transit Area, Stockholm, Sweden



# Character Precedent

Odenplan Transit Area, Stockholm, Sweden

## Area Characteristics

1. Mixed-use transit oriented neighbourhood
2. Mixed architectural style including heritage, modern and contemporary building styles
3. Mid-high rise building typologies
4. A combination of office and residential buildings





# Guiding Principles

1. A Balanced Mobility Mix
2. Connected
3. Walkable, Inviting Streets and Open Spaces
4. Respect Existing Neighbourhoods
5. Appropriate Scale, Form and Density
6. Design Excellence
7. Mix of Uses
8. Strategic Parking Management
9. A Flexible Phasing Plan that Accommodates Growth and Change





*Thank you*