

MATCH LINE (SEE DWG. GS-1)

HYDRO LANDS

LOCATION PLAN  
N.T.S.

LEGEND

- EXISTING ELEVATION
- PROPOSED ELEVATION
- DITCH, SWALE, OR GUTTER LINE
- EXISTING STORM MANHOLE
- EXISTING SANITARY MANHOLE
- EXISTING CATCHBASIN
- PROPOSED STORM MANHOLE
- PROPOSED SANITARY MANHOLE
- PROPOSED SANITARY PUMP STATION
- PROPOSED CATCHBASIN
- PROPOSED DOUBLE CATCHBASIN
- PROPOSED STORM SEWER
- PROPOSED SANITARY SEWER
- PROPOSED SANITARY FORCEMAIN
- PROPOSED WATERMAIN
- HYDRANT AND VALVE
- ORIFICE TUBE (REFER TO SWM REPORT)
- 100 YEAR STORM PONDING LIMIT

- LIST OF DRAWINGS**
- CVR COVER DRAWING
  - GS1 GRADING AND SERVICING PLAN (NORTH PORTION)
  - GS2 GRADING AND SERVICING PLAN (SOUTH PORTION)
  - ES EROSION / SILTATION CONTROL PLAN
  - DE1 DETAILS AND GENERAL NOTES
  - DE2 DETAILS AND TYPICAL SECTIONS
  - PM PAVEMENT MARKING PLAN
  - XS1 HWY. 27 - SECTIONS (STA. 9+874 TO 10+040)
  - XS2 HWY. 27 - SECTIONS (STA. 10+060 TO 10+165)
  - PP1 PLAN AND PROFILE (SITE ACCESS DRIVEWAY)
  - CUP COMPOSITE UTILITY PLAN
  - PS SANITARY PUMPING STATION

**SURVEY INFORMATION**

HOLDING JONES VANDERVEEN INC.  
ONTARIO LAND SURVEYORS  
1700 LANGSTAFF ROAD, SUITE 1002  
VAUGHAN, ON L4K 3S3  
PHONE: (905) 660-4000  
(416) 445-3800  
EMAIL: hjv@planetee.com

**BENCHMARK**

ELEVATIONS ARE GEODETIC AND ARE REFERRED TO THE CITY OF VAUGHAN CONTROL MONUMENT NO. 105890148, HAVING AN ELEVATION OF 175.672 METRES.

NO.	REVISIONS	DATE	BY
5.	REVISED AS PER TRCA COMMENTS	04/27/07	A.H.
4.	REVISED AS PER TRCA AND CITY COMMENTS	04/05/07	D.L.
3.	MINOR REVISION	03/19/07	J.M.
2.	REVISED AS PER TRCA COMMENTS	02/08/07	A.H.
1.	REVISED PROPOSED GRADINGS	12/18/06	A.H.

APPROVED "AS NOTED"  
FOR SITE PLAN  
CITY OF VAUGHAN  
ENGINEERING DEPARTMENT

APPROVED BY: [Signature]  
DATE: 2/2/07

OP. 05. 024  
Z. 05. 054  
DA. 06. 001

REGISTERED PROFESSIONAL ENGINEER  
E.D. ROBERTS  
PROVINCE OF ONTARIO

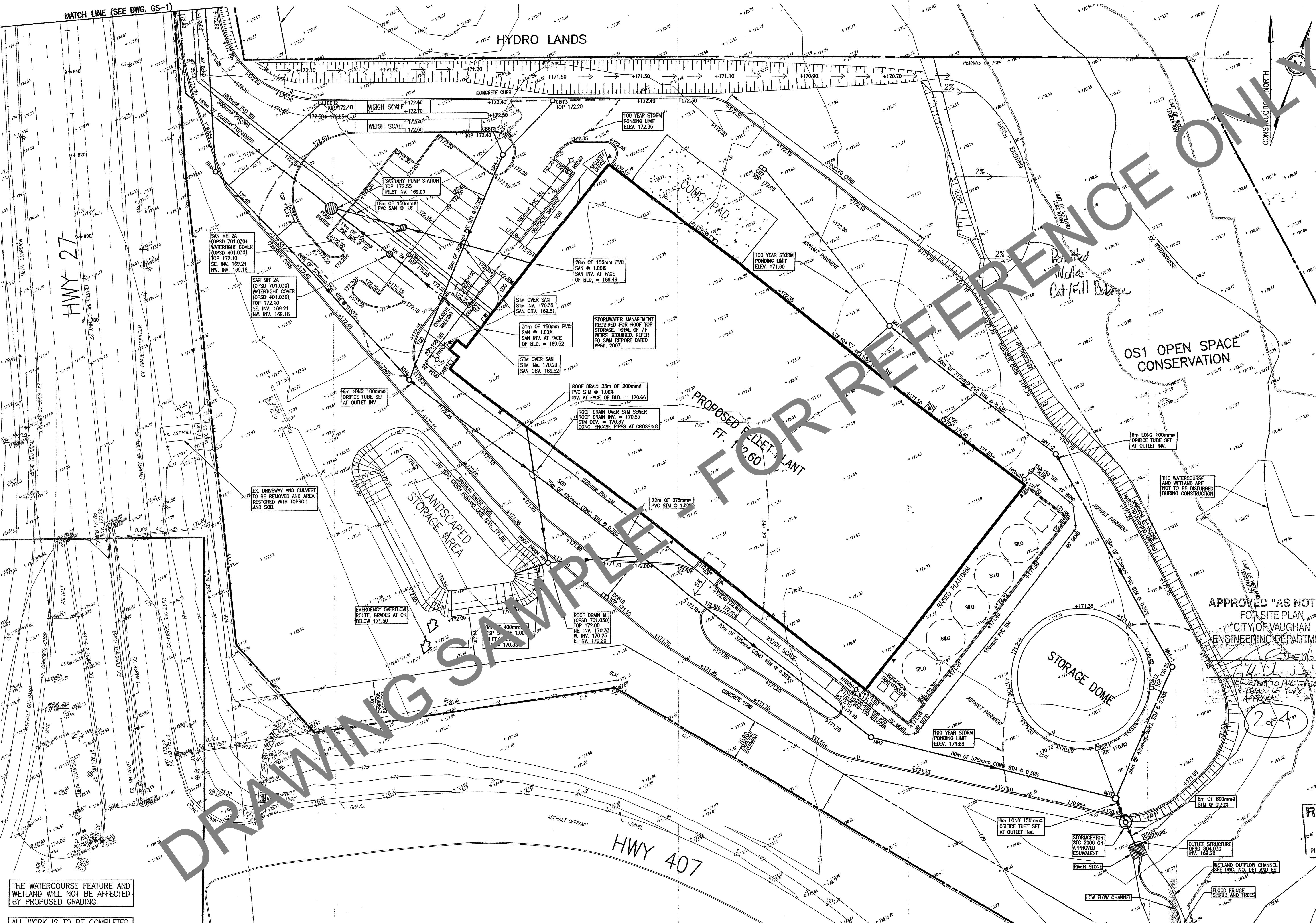
**CITY OF VAUGHAN**  
**REGIONAL MUNICIPALITY OF YORK**  
**GRADING AND SERVICING PLAN**  
**(SOUTH PORTION)**

DONGARRA PELLET FACTORY  
HWY 27 AND HWY 407  
PART OF THE WEST HALF OF LOT 2 AND  
PART OF THE WEST HALF OF LOT 3, CONCESSION B

APR 3 0 2007  
PLANNING & DEVELOPMENT  
City of Vaughan

**Cole Engineering Group Ltd**  
100 Fenwick Drive - Suite 100 - Markham - Ontario - L3R 9R2  
Phone: (416) 947-6161, (905) 940-6161 Fax: (905) 940-2064

SCALE: 1:400 PROJECT NO: M06-585  
DRAWN BY: J.M. DRAWING NO: GS-2  
CHECKED BY: M.E.B.  
DESIGNED BY: E.D.R.  
DATE: OCTOBER 26, 2006



THE WATERCOURSE FEATURE AND WETLAND WILL NOT BE AFFECTED BY PROPOSED GRADING.

ALL WORK IS TO BE COMPLETED IN THE DRY.