

**PAVEMENT DESIGN (LOCAL ROADS)**

- 40mm COMPACTED DEPTH OF HL3 ASPHALT TOP COURSE
- 50mm COMPACTED DEPTH OF HL8 ASPHALT BINDER COURSE
- 150mm COMPACTED 20mm CRUSHER-RUN LIMESTONE
- 350mm COMPACTED 50mm CRUSHER-RUN LIMESTONE

- NOTES**
- FOR GENERAL NOTES REFER TO DWG. No. GN-1.
  - THE LOCATION OF ALL UNDERGROUND AND ABOVE GROUND UTILITIES AND STRUCTURES ARE NOT NECESSARILY SHOWN ON CONTRACT DRAWINGS, AND WHERE SHOWN THE ACCURACY OF THE LOCATION AND ELEVATION OF SUCH UTILITIES AND STRUCTURES ARE NOT GUARANTEED. PRIOR TO COMMENCING CONSTRUCTION, THE CONTRACTOR SHALL VERIFY EXACT LOCATION AND ELEVATION OF SUCH UTILITIES AND STRUCTURES AND SHALL ASSUME ALL RESPONSIBILITIES OF DAMAGE.
  - ALL AREAS DISTURBED DURING CONSTRUCTION OF SEWERS AND WATERMANS SHALL BE RESTORED TO ORIGINAL CONDITION OR BETTER AND TO THE SATISFACTION OF THE CITY OF VAUGHAN AND REGION OF YORK ENGINEERING DEPARTMENT. GRASSED AREAS SHALL BE TOPPED WITH 100mm TOPSOIL AND SODDED AS PER OPSD 218.010. ALL EXISTING SERVICES SHALL BE ADJUSTED TO SUIT NEW GRADES.
  - WHERE UNSHRINKABLE FILL IS SPECIFIED, IT WILL BE PLACED FROM BOTTOM OF TRENCH TO UNDERSIDE OF PAVEMENT AND/OR TOPSOIL LAYER OF BOULEVARD.
  - WHERE WATER SERVICE BOXES ARE INSTALLED DRIVEWAY LIMITS, PROVIDE FROST COLLARS. (SEE DETAIL DWG. No. D-6)
  - FOR SECTIONS 20, 21 AND 24 REFER TO DWG. SEC-3.

REVISIONS			
No.	DESCRIPTION	By	Date

**BENCH MARK No. 17-5**  
 GREEN PARK BUILDING LOCATED AT WEST SIDE OF DUFFERIN STREET AND SOUTH SIDE OF CONFEDERATION PARKWAY, SOUTH-WEST CORNER OF THE BUILDING 0.200m EAST OF SOUTH-WEST CORNER OF ABOVE GROUND ON SOUTH SIDE OF DUFFERIN STREET. ELEVATION: 211.750

APPROVED AS TO FORM IN RELIANCE UPON THE PROFESSIONAL SKILL AND ABILITY OF SCHAEFFERS CONSULTING ENGINEERS AS TO DESIGN AND SPECIFICATION

**H. O. TOZCU**  
 APR 11, 2016  
 PROVINCE OF ONTARIO

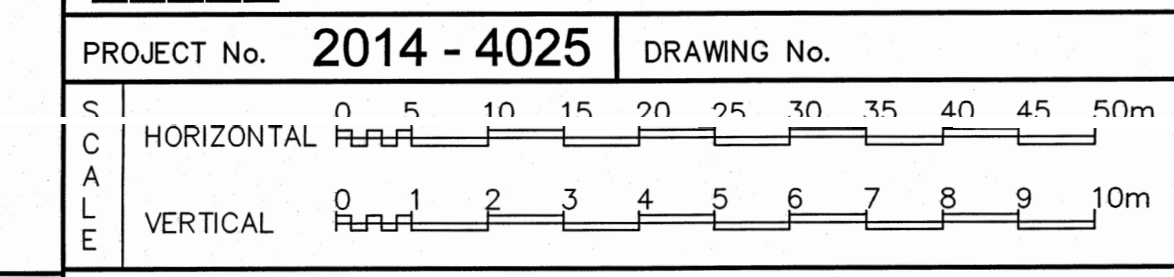
*[Signature]*  
 DIRECTOR OF DEVELOPMENT ENGINEERING AND INFRASTRUCTURE PLANNING DEPARTMENT

**NINE TEN WEST LIMITED**  
 CARRVILLE DISTRICT CENTER - PHASE 1  
 BLOCK 11

**SCHAEFFERS**  
 CONSULTING ENGINEERS

SCHAEFFER & ASSOCIATES LTD.

Ontario L4K 4R3  
 Tel: (905) 738-6100  
 Fax: (905) 738-6875  
 E-mail: design@schaeffers.com



**VAUGHAN**

**PLAN AND PROFILE OF AYLIN CRESCENT**  
 STA. 0+000.000 TO STA. 0+246.230

DESIGNED BY: T.A.	DATE: SEPTEMBER 2014	CHECKED BY: H.T.
DRAWN BY: I.V.		APPROVED BY: H.T.
SCALE: H 1:500 V 1:100		UWG. No. <b>PP - 1</b>

